

# V-RIB

## RESIDENTIAL VERTICAL WALL CLADDING

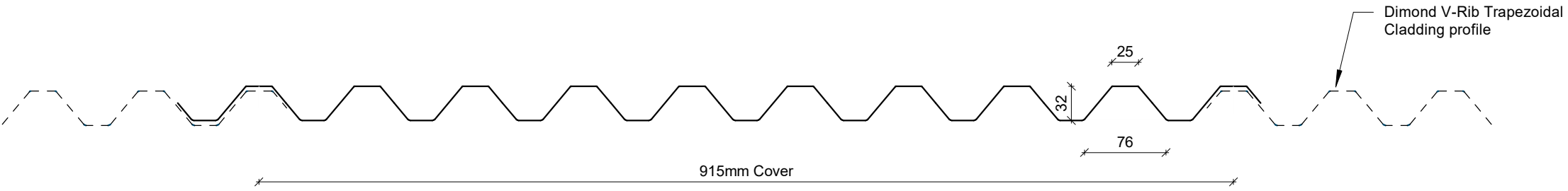
### DETAILS:

### REV:

### DATE:

VRRVC00	Cover Sheet	1	Jun 2025
VRRVC01	Profile Summary	1	Jun 2025
VRRVC02	Typical Flashing Detail	1	Jun 2025
VRRVC03	Barge Flashing Detail	1	Jun 2025
VRRVC04	Transverse Junction Detail	1	Jun 2025
VRRVC05	External Corner Detail	1	Jun 2025
VRRVC06	Internal Corner Detail	1	Jun 2025
VRRVC07	Base Detail	1	Jun 2025
VRRVC08	Soffit Detail	1	Jun 2025
VRRVC09	Window Head Detail	1	Jun 2025
VRRVC10	Window Jamb Detail	1	Jun 2025
VRRVC11	Window Sill Detail	1	Jun 2025
VRRVC12	Meterbox Head Detail	1	Jun 2025
VRRVC13	Meterbox Jamb Detail	1	Jun 2025
VRRVC14	Meterbox Sill Detail	1	Jun 2025
VRRVC15	Pipe Penetration Detail	1	Jun 2025
VRRVC16	Cladding to Concrete Junction Detail	1	Jun 2025
VRRVC17	Cladding to Brick Junction Detail	1	Jun 2025
VRRVC18	Cladding to Panel Junction Detail	1	Jun 2025
VRRVC19	3D Window Flashing Detail	1	Jun 2025

PROFILE OVERVIEW	
MINIMUM PITCH	4°
RIB TYPE	High
RIBS PER SHEET	10 Ribs per sheet
WIDTH	915mm Cover



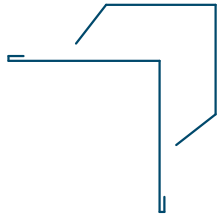
## Profile Summary

Rev: 1 V-Rib Residential Vertical Cladding

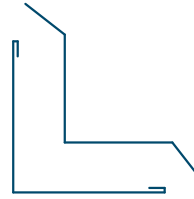


©Dimond 2023, all rights reserved. The information and specifications contained in this document are proprietary to Dimond and may not be used other than for the purpose of designing or building a roof or roofing system solely using products supplied or approved by Dimond ("Permitted Purpose"). You may copy this document solely for the Permitted Purpose, but may not otherwise copy, publish, distribute or modify this document without Dimond's prior written consent. Dimond will not be liable for any use of this document or information and specifications contained in this document, other than for the Permitted Purpose

Date: Jun 2025 Scale: 1 : 5 Sheet: VRRVC01



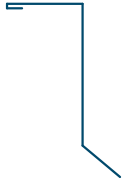
**External Corner Flashing**



**Internal Corner Flashing**



**Base Flashing**



**Soffit Flashing**



**Window Head Flashing**



**Window Jamb Flashing**



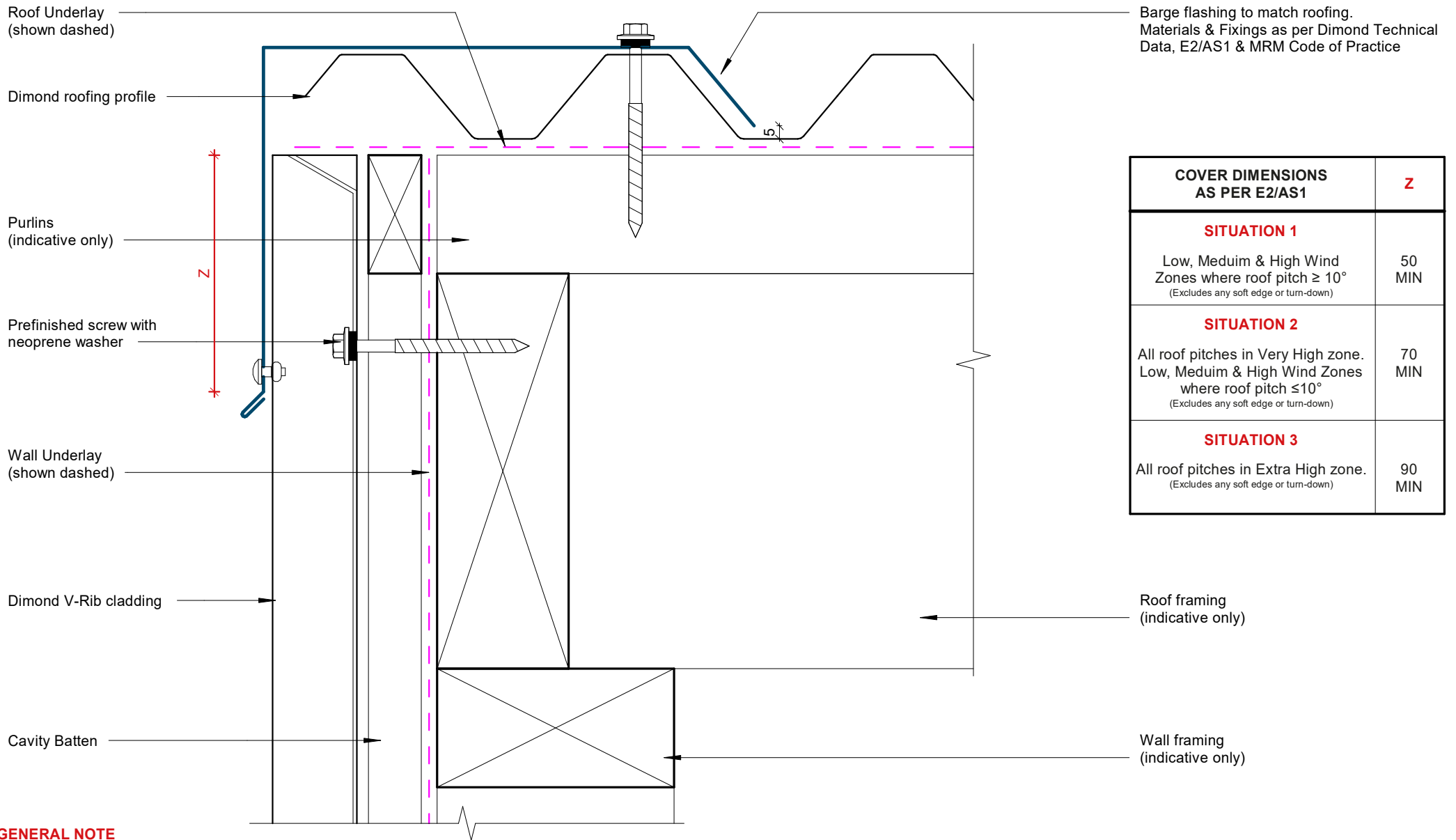
**Window Sill Flashing**



**Transverse Flashing**

## Typical Flashing Detail

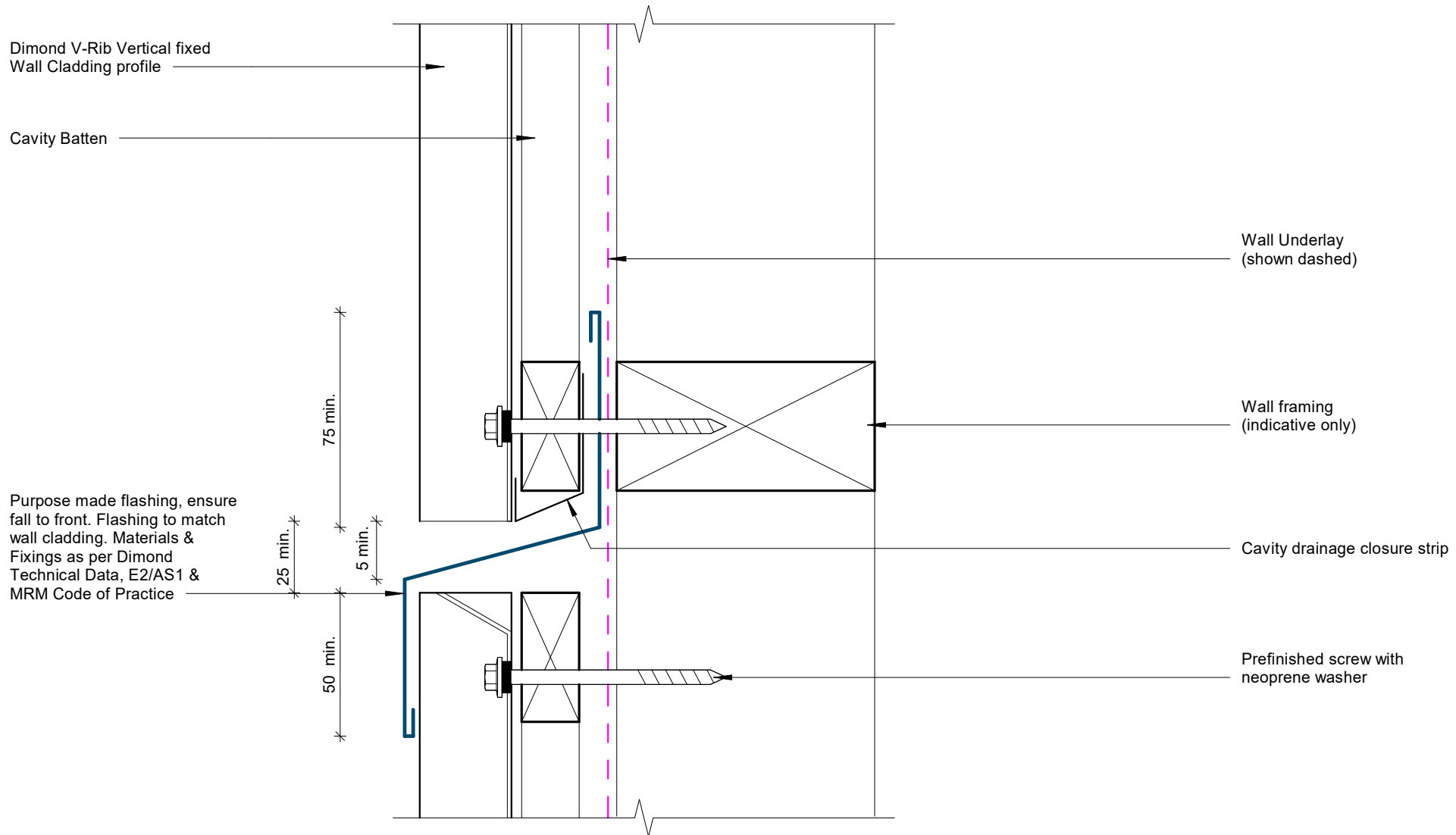
Rev: 1    **V-Rib Residential Vertical Cladding**



**GENERAL NOTE**

Cavity battens or timber framing that contain copper must be separated from steel cladding by a strip of wall or roof underlay or DPC.

# Barge Flashing Detail



**GENERAL NOTE**

Cavity battens or timber framing that contain copper must be separated from steel cladding by a strip of wall or roof underlay or DPC.

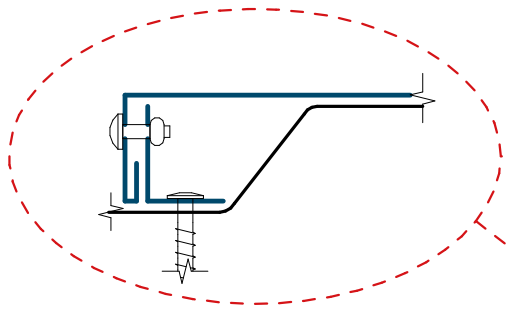
# Transverse Junction Detail

Rev: 1 **V-Rib Residential Vertical Cladding**

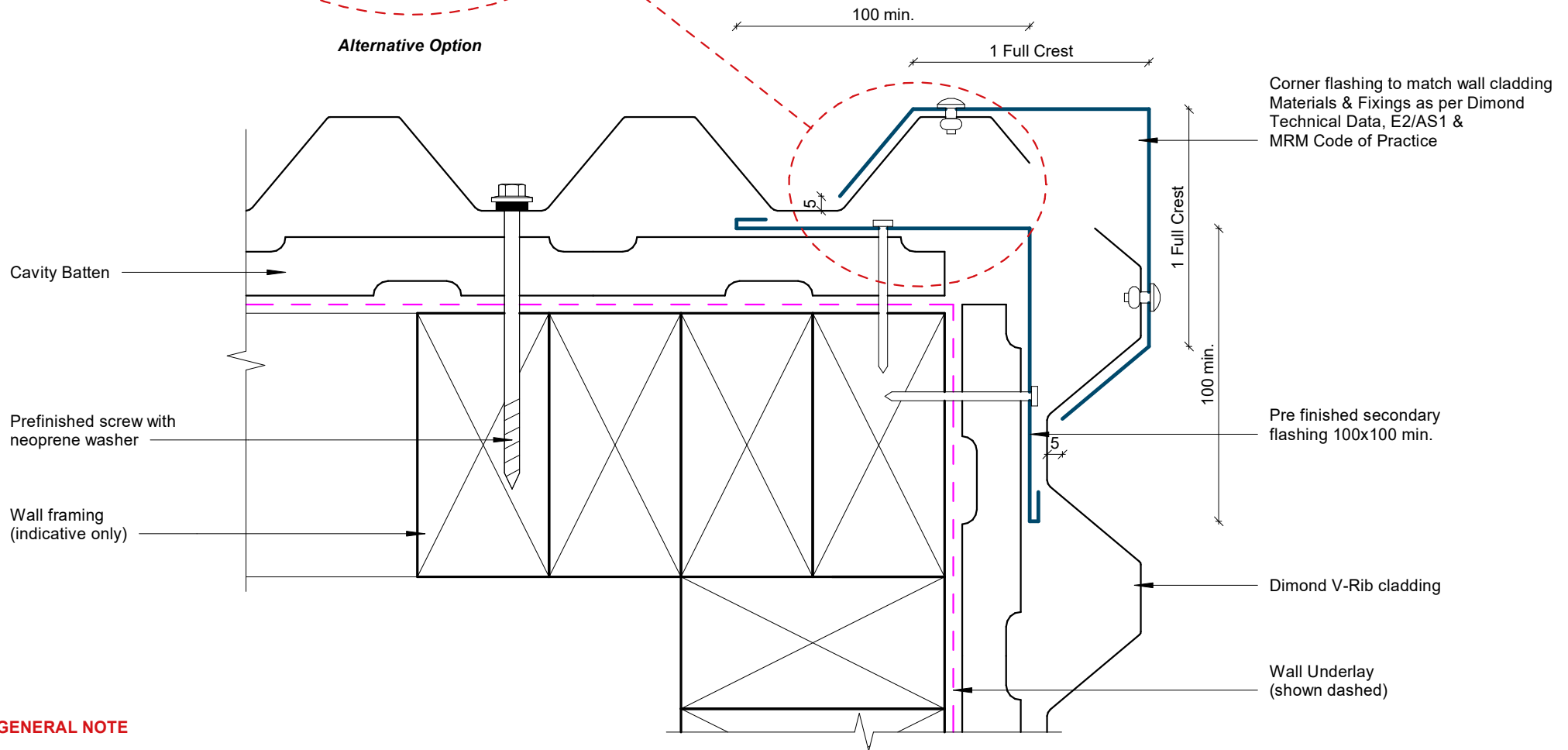


©Dimond 2023, all rights reserved. The information and specifications contained in this document are proprietary to Dimond and may not be used other than for the purpose of designing or building a roof or roofing system solely using products supplied or approved by Dimond ("Permitted Purpose"). You may copy this document solely for the Permitted Purpose, but may not otherwise copy, publish, distribute or modify this document without Dimond's prior written consent. Dimond will not be liable for any use of this document or information and specifications contained in this document, other than for the Permitted Purpose

Date: Jun 2025 Scale: 1 : 2 Sheet: **VRRVC04**



**Alternative Option**

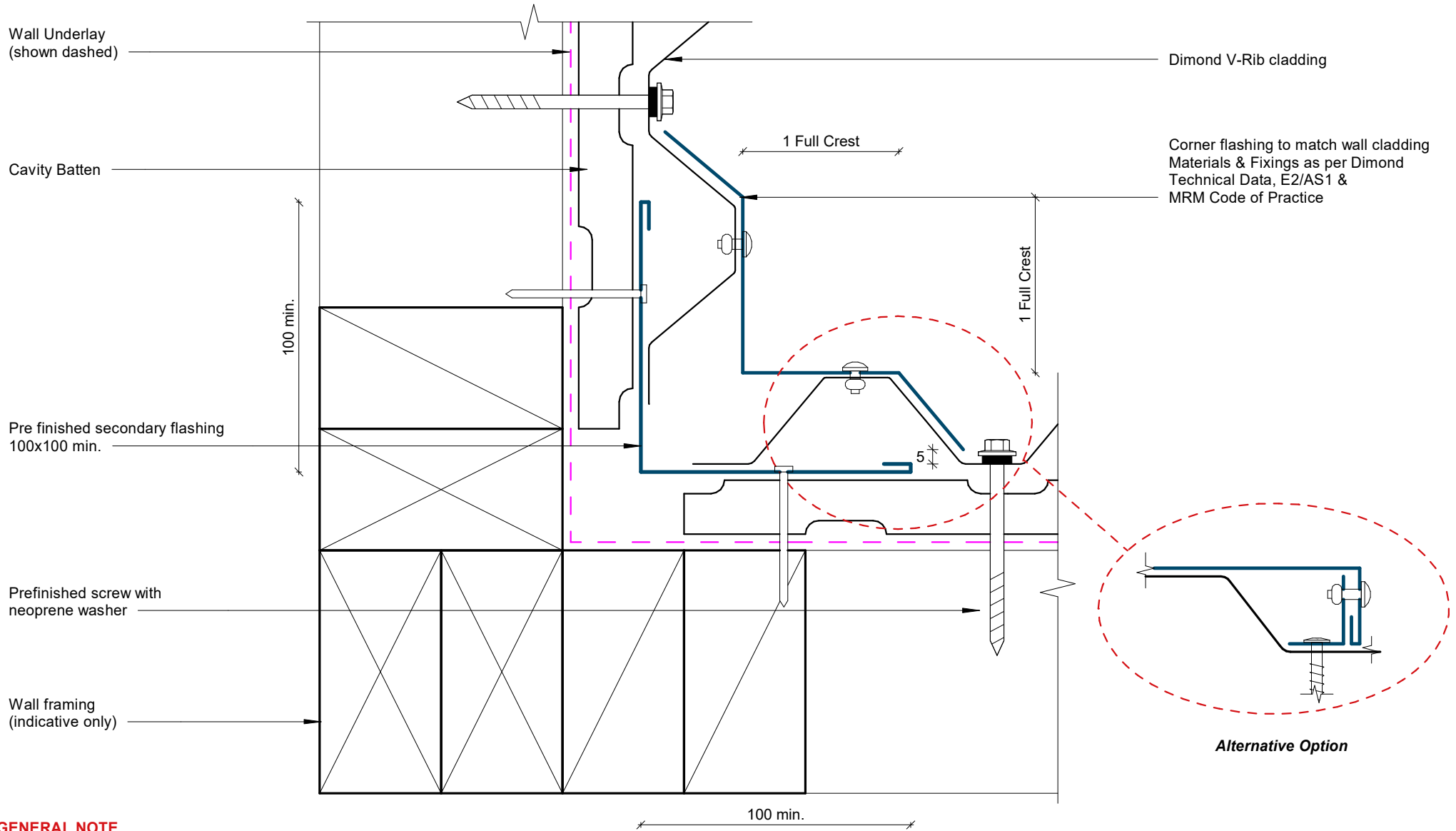


**GENERAL NOTE**

Cavity battens or timber framing that contain copper must be separated from steel cladding by a strip of wall or roof underlay or DPC.

# External Corner Detail

Rev: 1 **V-Rib Residential Vertical Cladding**



**GENERAL NOTE**

Cavity battens or timber framing that contain copper must be separated from steel cladding by a strip of wall or roof underlay or DPC.

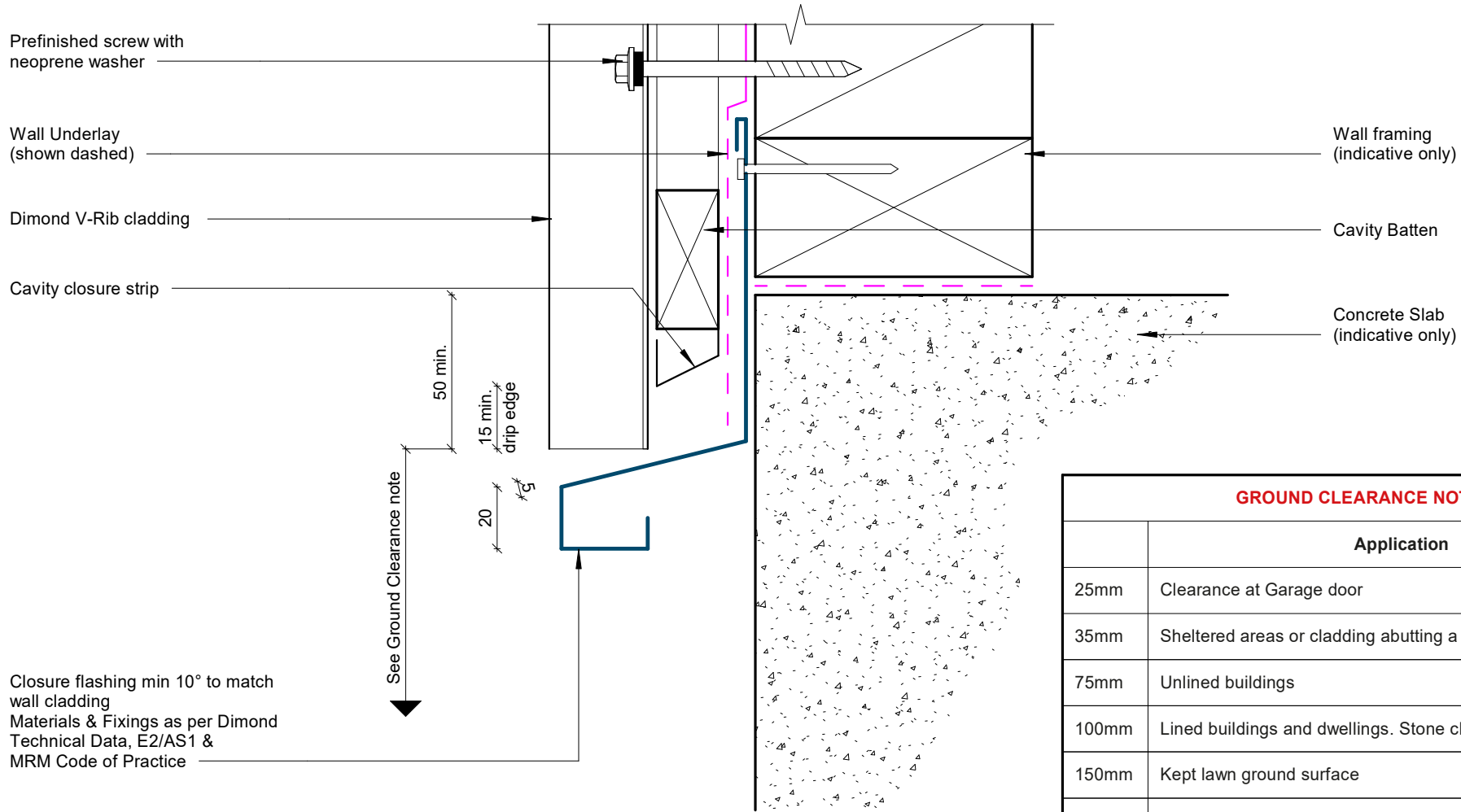
# Internal Corner Detail

Rev: 1 V-Rib Residential Vertical Cladding



©Dimond 2023, all rights reserved. The information and specifications contained in this document are proprietary to Dimond and may not be used other than for the purpose of designing or building a roof or roofing system solely using products supplied or approved by Dimond ("Permitted Purpose"). You may copy this document solely for the Permitted Purpose, but may not otherwise copy, publish, distribute or modify this document without Dimond's prior written consent. Dimond will not be liable for any use of this document or information and specifications contained in this document, other than for the Permitted Purpose

Date: Jun 2025 Scale: 1 : 2 Sheet: VRRVC06



Closure flashing min 10° to match wall cladding  
 Materials & Fixings as per Dimond Technical Data, E2/AS1 & MRM Code of Practice

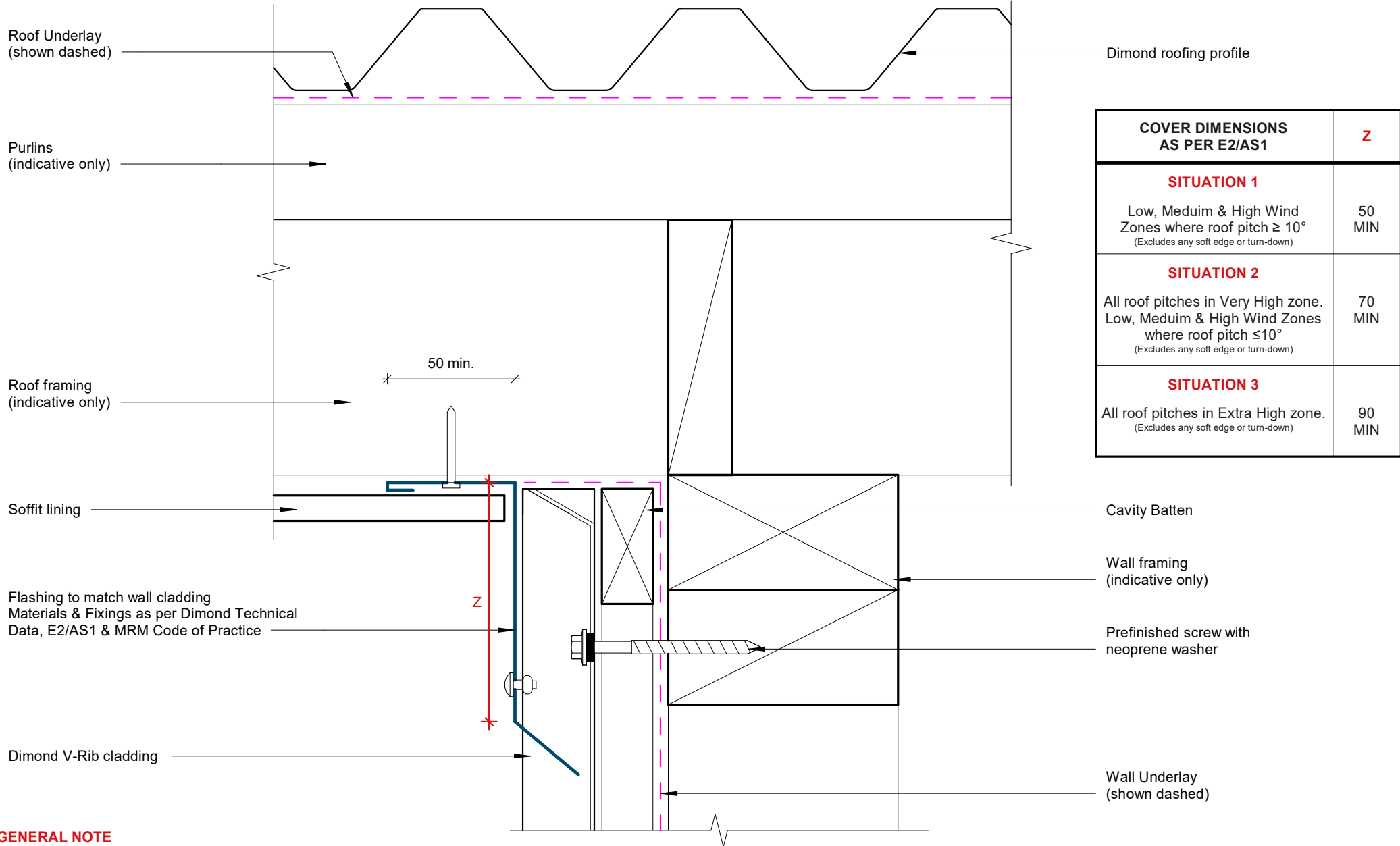
**GROUND CLEARANCE NOTE**

GROUND CLEARANCE NOTE	
	Application
25mm	Clearance at Garage door
35mm	Sheltered areas or cladding abutting a deck
75mm	Unlined buildings
100mm	Lined buildings and dwellings. Stone chip ground surface
150mm	Kept lawn ground surface
175mm	Pasture ground surface

**GENERAL NOTE**

Cavity battens or timber framing that contain copper must be separated from steel cladding by a strip of wall or roof underlay or DPC.

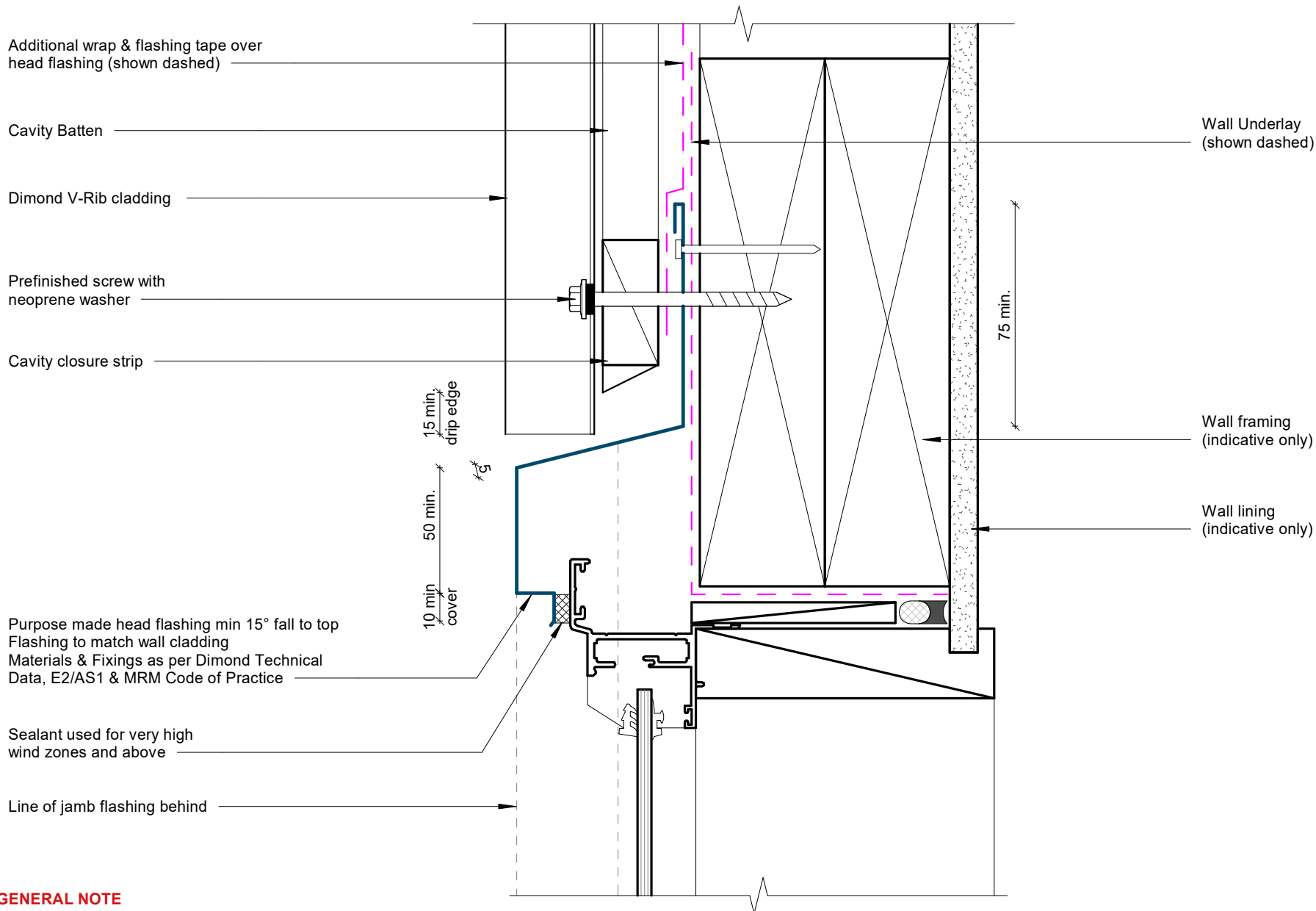
**Base Detail**



**GENERAL NOTE**

Cavity battens or timber framing that contain copper must be separated from steel cladding by a strip of wall or roof underlay or DPC.

# Soffit Detail



**GENERAL NOTE**

Cavity battens or timber framing that contain copper must be separated from steel cladding by a strip of wall or roof underlay or DPC.

# Window Head Detail

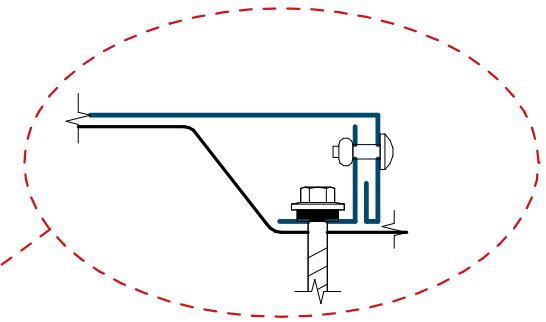
Sealant used for very high wind zones and above

Line of head flashing over

Wall framing (indicative only)

10 min. cover  
5  
1 Full Crest  
5

100 min.



Alternative Option

Prefinished screw with neoprene washer

Dimond V-Rib cladding

Cavity Batten

Wall Underlay (shown dashed)

Wall lining (indicative only)

**GENERAL NOTE**

Cavity battens or timber framing that contain copper must be separated from steel cladding by a strip of wall or roof underlay or DPC.

# Window Jamb Detail

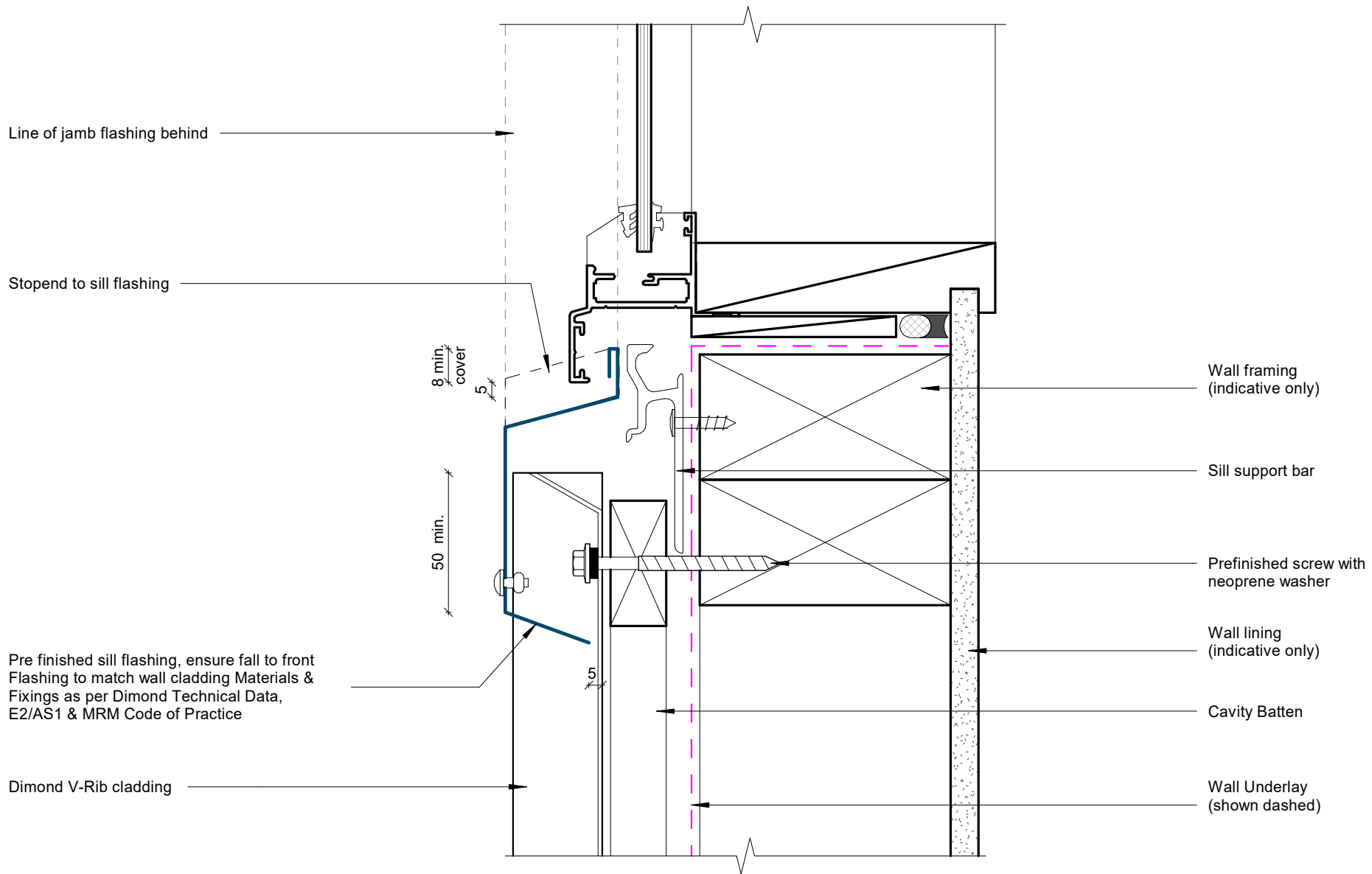
Rev: 1

**V-Rib Residential Vertical Cladding**



©Dimond 2023, all rights reserved. The information and specifications contained in this document are proprietary to Dimond and may not be used other than for the purpose of designing or building a roof or roofing system solely using products supplied or approved by Dimond ("Permitted Purpose"). You may copy this document solely for the Permitted Purpose, but may not otherwise copy, publish, distribute or modify this document without Dimond's prior written consent. Dimond will not be liable for any use of this document or information and specifications contained in this document, other than for the Permitted Purpose

Date: Jun 2025 Scale: 1 : 2 Sheet: **VRRVC10**



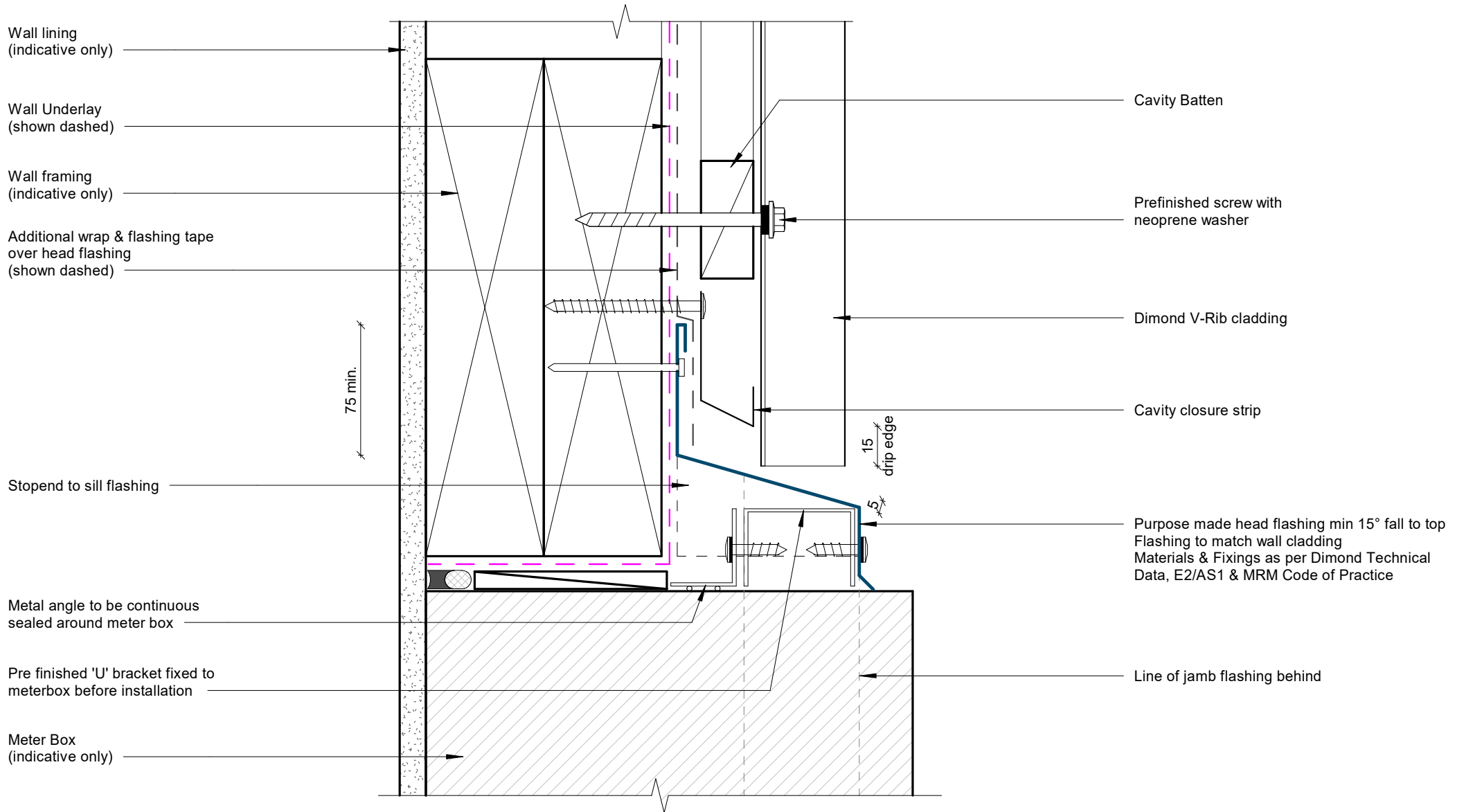
**GENERAL NOTE**

Cavity battens or timber framing that contain copper must be separated from steel cladding by a strip of wall or roof underlay or DPC.

# Window Sill Detail

Rev: 1

**V-Rib Residential Vertical Cladding**



**GENERAL NOTE**

Cavity battens or timber framing that contain copper must be separated from steel cladding by a strip of wall or roof underlay or DPC.

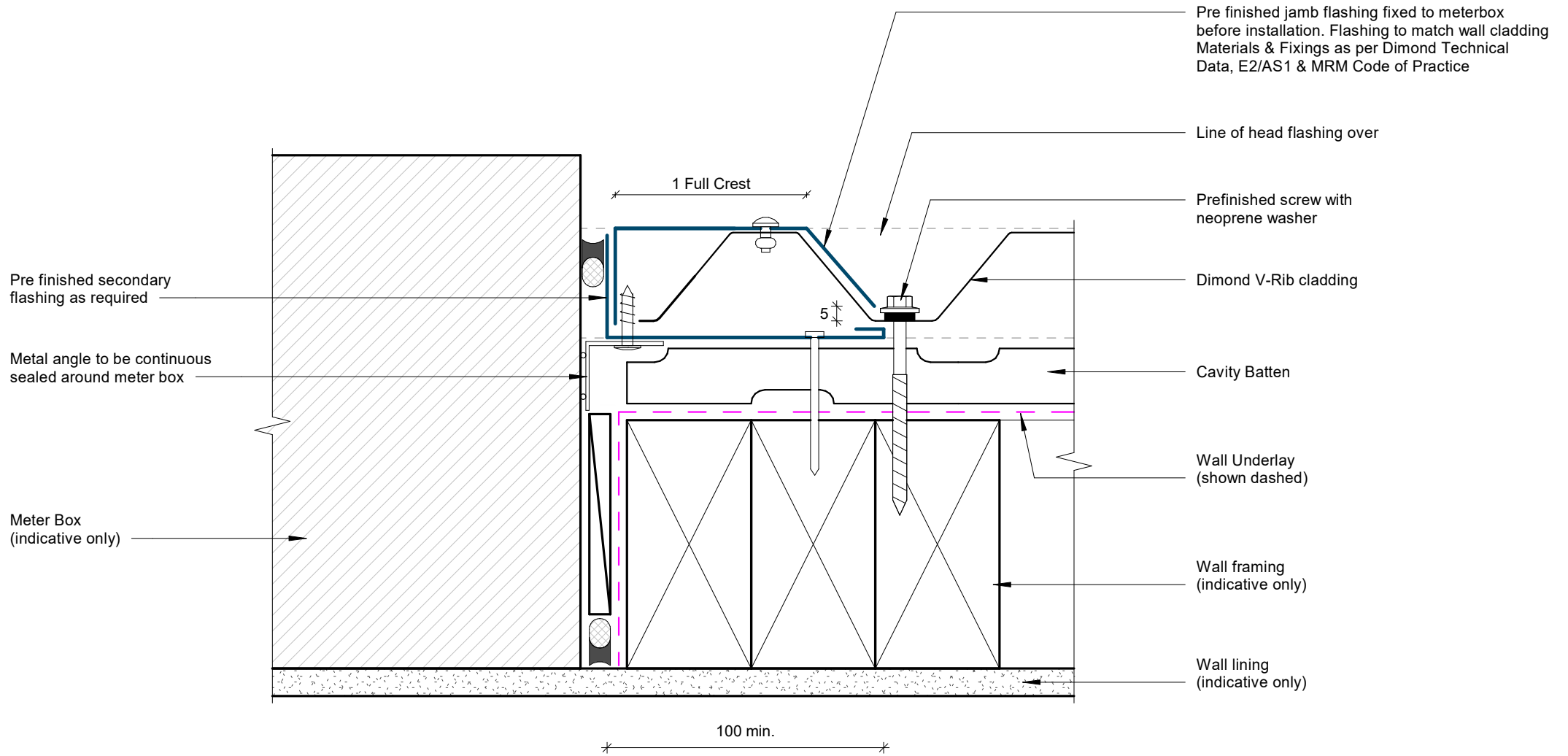
# Meterbox Head Detail

Rev: 1 **V-Rib Residential Vertical Cladding**



©Dimond 2023, all rights reserved. The information and specifications contained in this document are proprietary to Dimond and may not be used other than for the purpose of designing or building a roof or roofing system solely using products supplied or approved by Dimond ("Permitted Purpose"). You may copy this document solely for the Permitted Purpose, but may not otherwise copy, publish, distribute or modify this document without Dimond's prior written consent. Dimond will not be liable for any use of this document or information and specifications contained in this document, other than for the Permitted Purpose

Date: Jun 2025 Scale: 1 : 2 Sheet: **VRRVC12**



**GENERAL NOTE**

Cavity battens or timber framing that contain copper must be separated from steel cladding by a strip of wall or roof underlay or DPC.

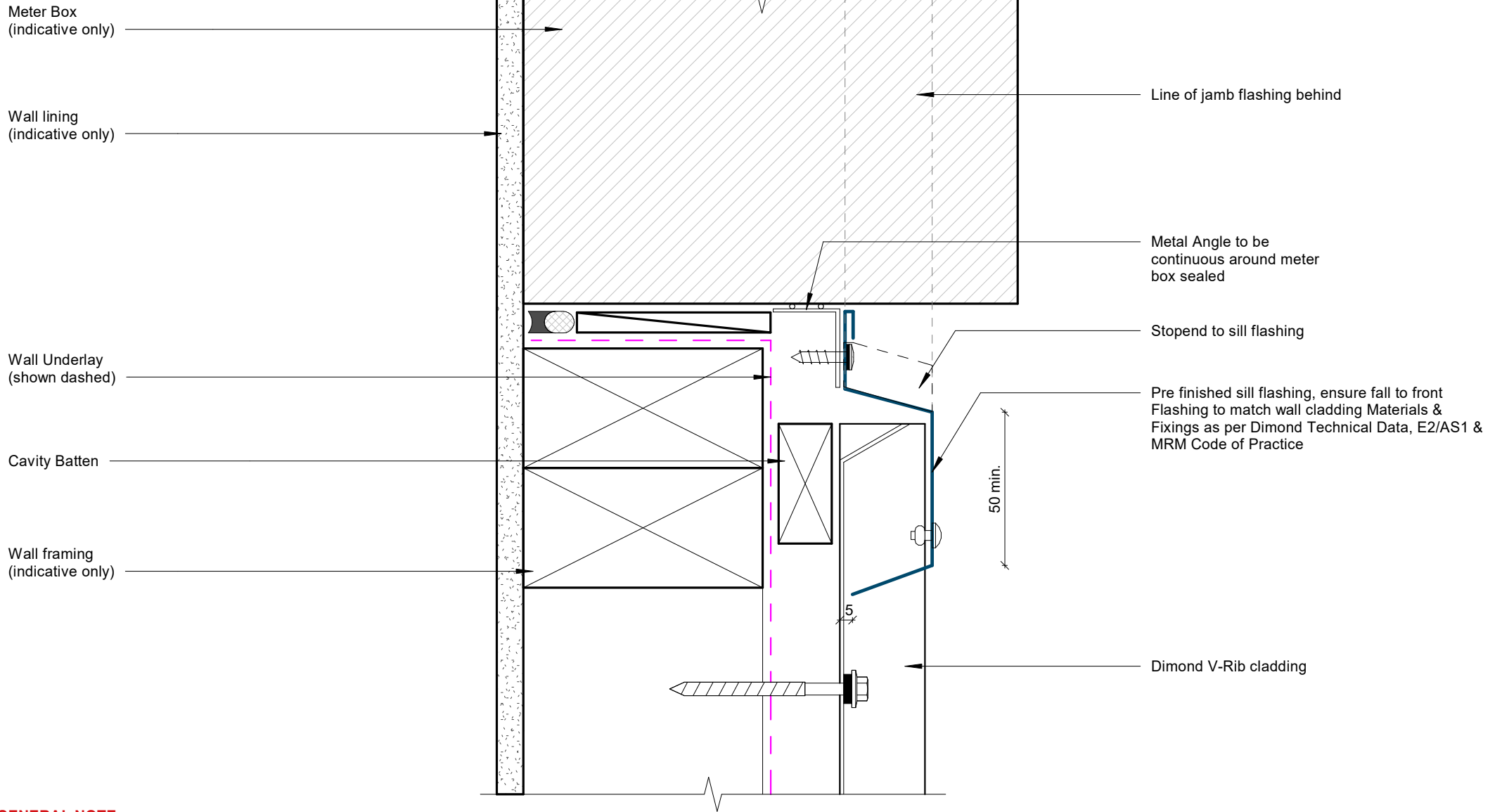
# Meterbox Jamb Detail

Rev: 1 **V-Rib Residential Vertical Cladding**



©Dimond 2023, all rights reserved. The information and specifications contained in this document are proprietary to Dimond and may not be used other than for the purpose of designing or building a roof or roofing system solely using products supplied or approved by Dimond ("Permitted Purpose"). You may copy this document solely for the Permitted Purpose, but may not otherwise copy, publish, distribute or modify this document without Dimond's prior written consent. Dimond will not be liable for any use of this document or information and specifications contained in this document, other than for the Permitted Purpose

Date: Jun 2025 Scale: 1 : 2 Sheet: **VRRVC13**

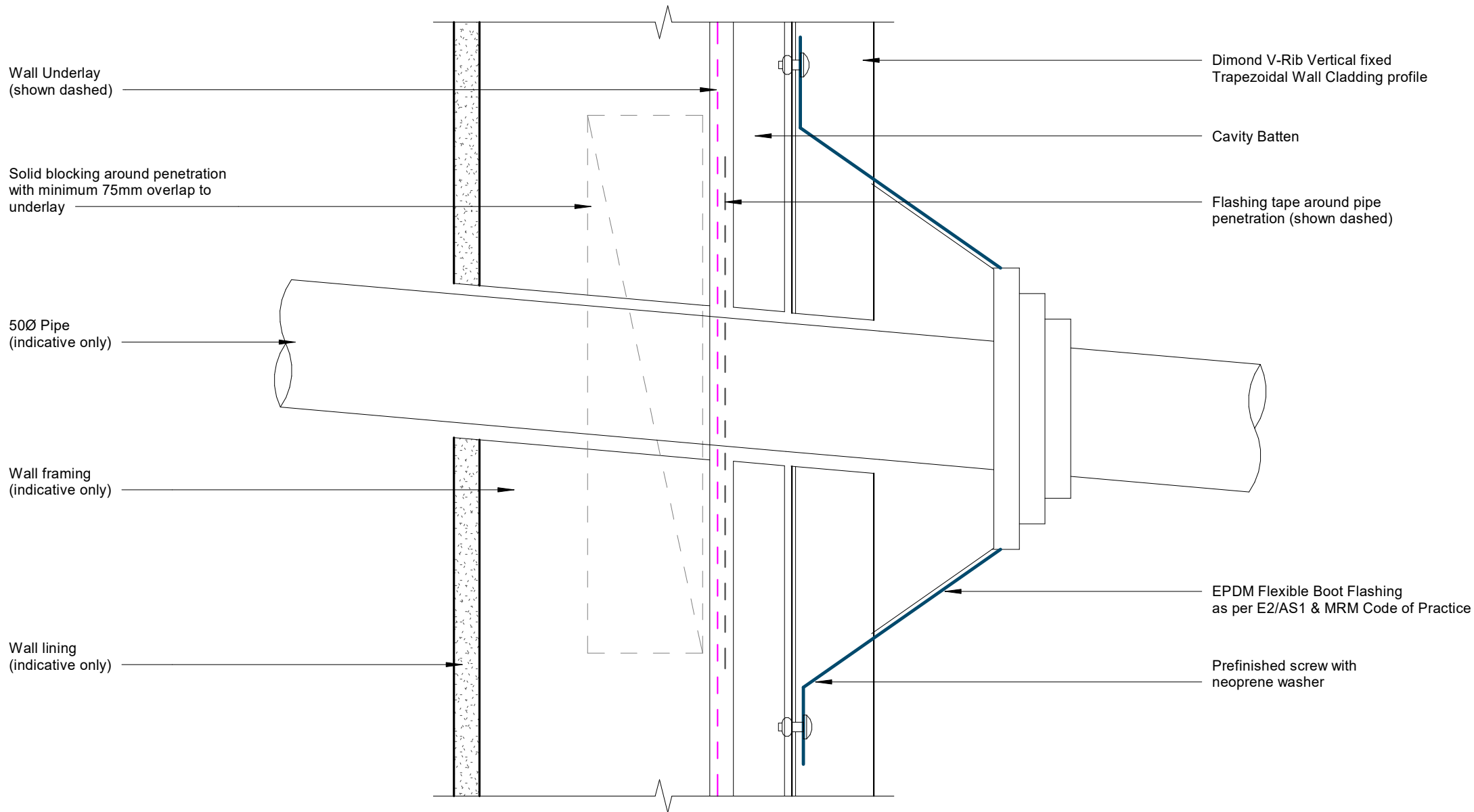


**GENERAL NOTE**

Cavity battens or timber framing that contain copper must be separated from steel cladding by a strip of wall or roof underlay or DPC.

## Meterbox Sill Detail

Rev: 1 V-Rib Residential Vertical Cladding

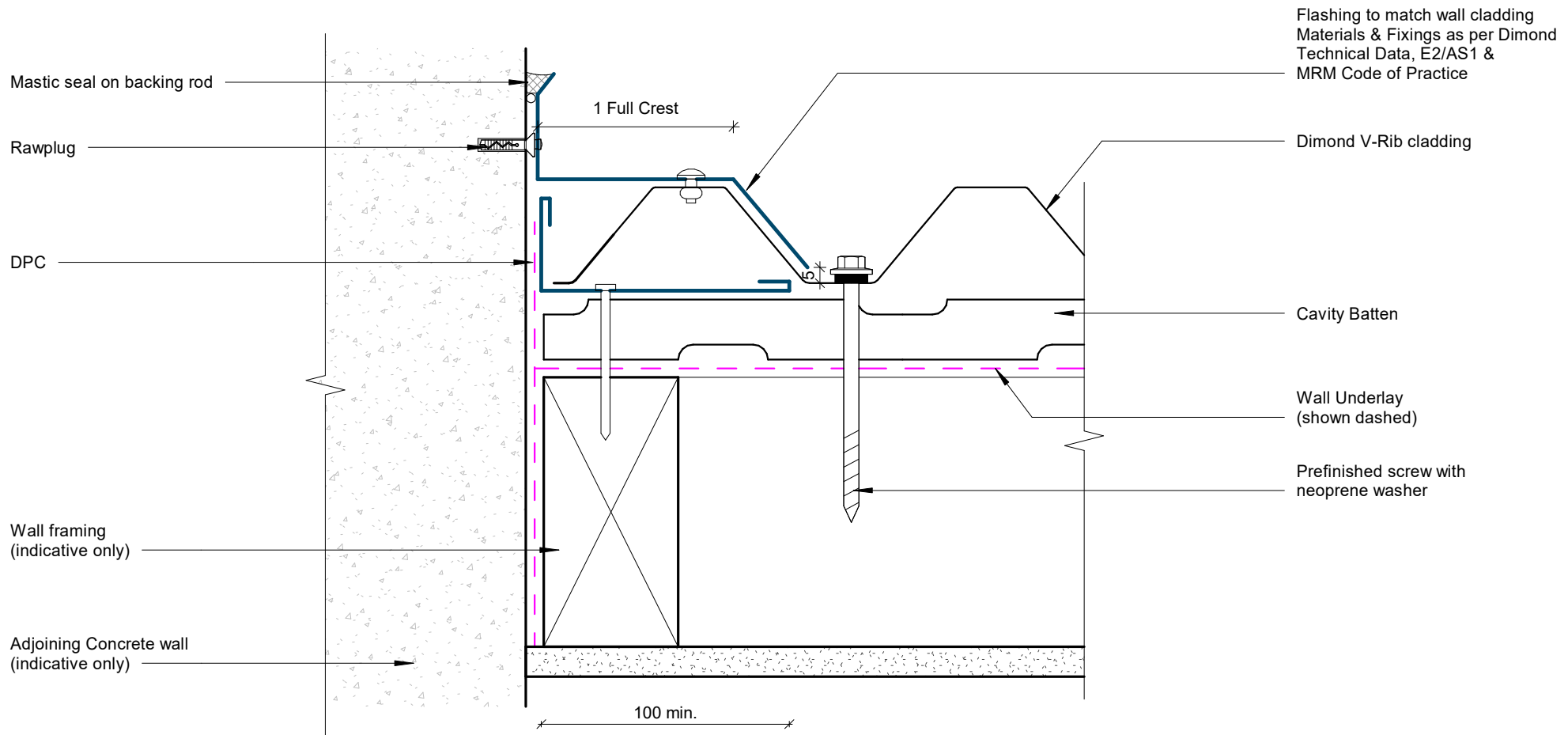


**GENERAL NOTE**

Cavity battens or timber framing that contain copper must be separated from steel cladding by a strip of wall or roof underlay or DPC.

# Pipe Penetration Detail

Rev: 1 **V-Rib Residential Vertical Cladding**



**GENERAL NOTE**

Cavity battens or timber framing that contain copper must be separated from steel cladding by a strip of wall or roof underlay or DPC.

## Cladding to Concrete Junction Detail

Rev: 1

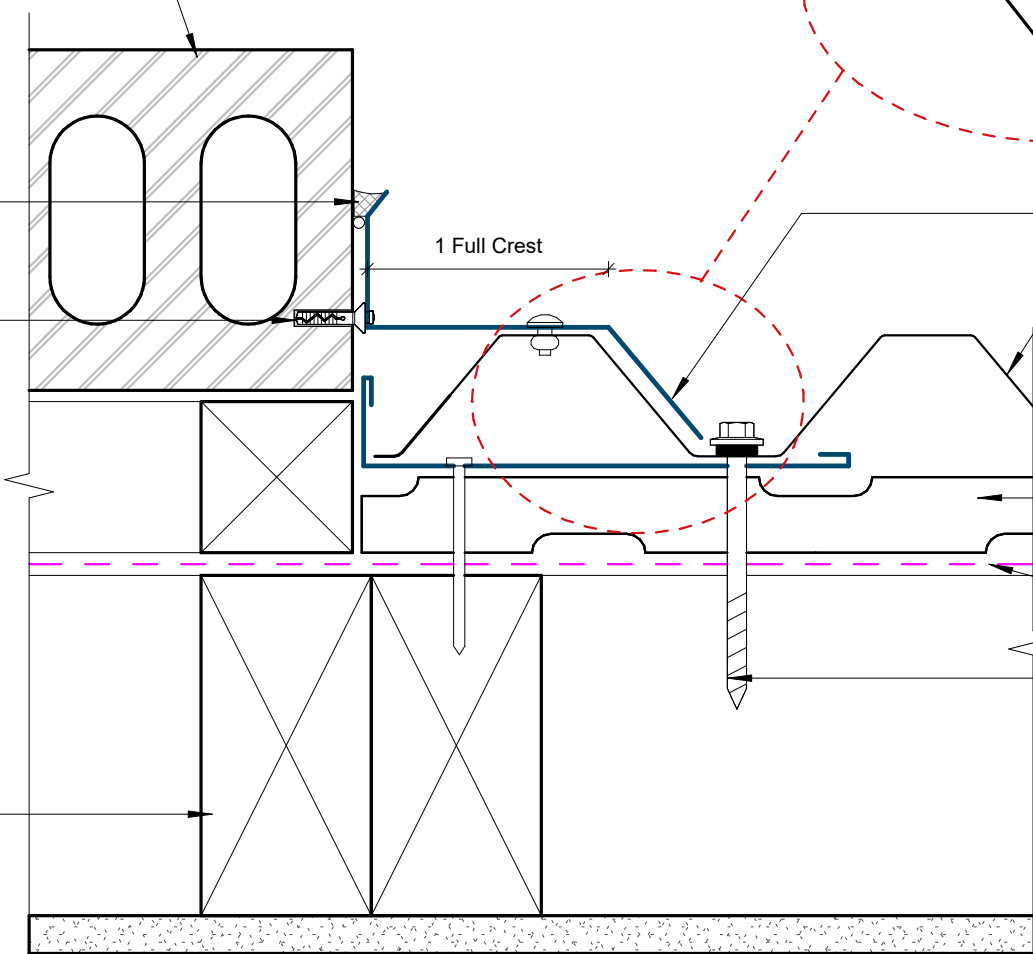
V-Rib Residential Vertical Cladding

Adjoining Brick veneer on cavity (indicative only)

Mastic seal on backing rod

Rawplug

Wall framing (indicative only)



1 Full Crest

100 min.

Flashing to match wall cladding  
Materials & Fixings as per Dimond  
Technical Data, E2/AS1 &  
MRM Code of Practice

Dimond V-Rib cladding

Cavity Batten

Wall Underlay  
(shown dashed)

Prefinished screw with  
neoprene washer

**GENERAL NOTE**

Cavity battens or timber framing that contain copper must be separated from steel cladding by a strip of wall or roof underlay or DPC.

# Cladding to Brick Junction Detail

Rev: 1

V-Rib Residential Vertical Cladding



©Dimond 2023, all rights reserved. The information and specifications contained in this document are proprietary to Dimond and may not be used other than for the purpose of designing or building a roof or roofing system solely using products supplied or approved by Dimond ("Permitted Purpose"). You may copy this document solely for the Permitted Purpose, but may not otherwise copy, publish, distribute or modify this document without Dimond's prior written consent. Dimond will not be liable for any use of this document or information and specifications contained in this document, other than for the Permitted Purpose

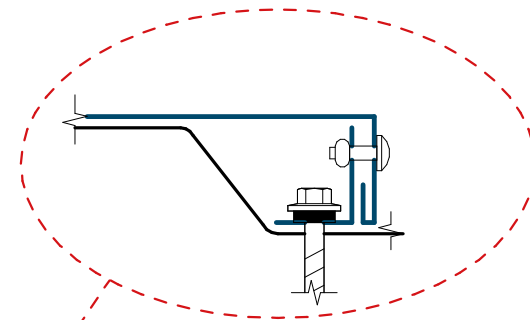
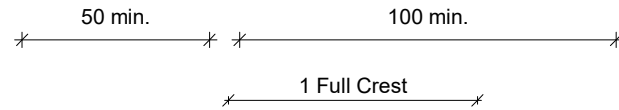
Date: Jun 2025 Scale: 1 : 2 Sheet: VRRVC17

Flashing to match wall cladding  
Materials & Fixings as per Dimond  
Technical Data, E2/AS1 &  
MRM Code of Practice

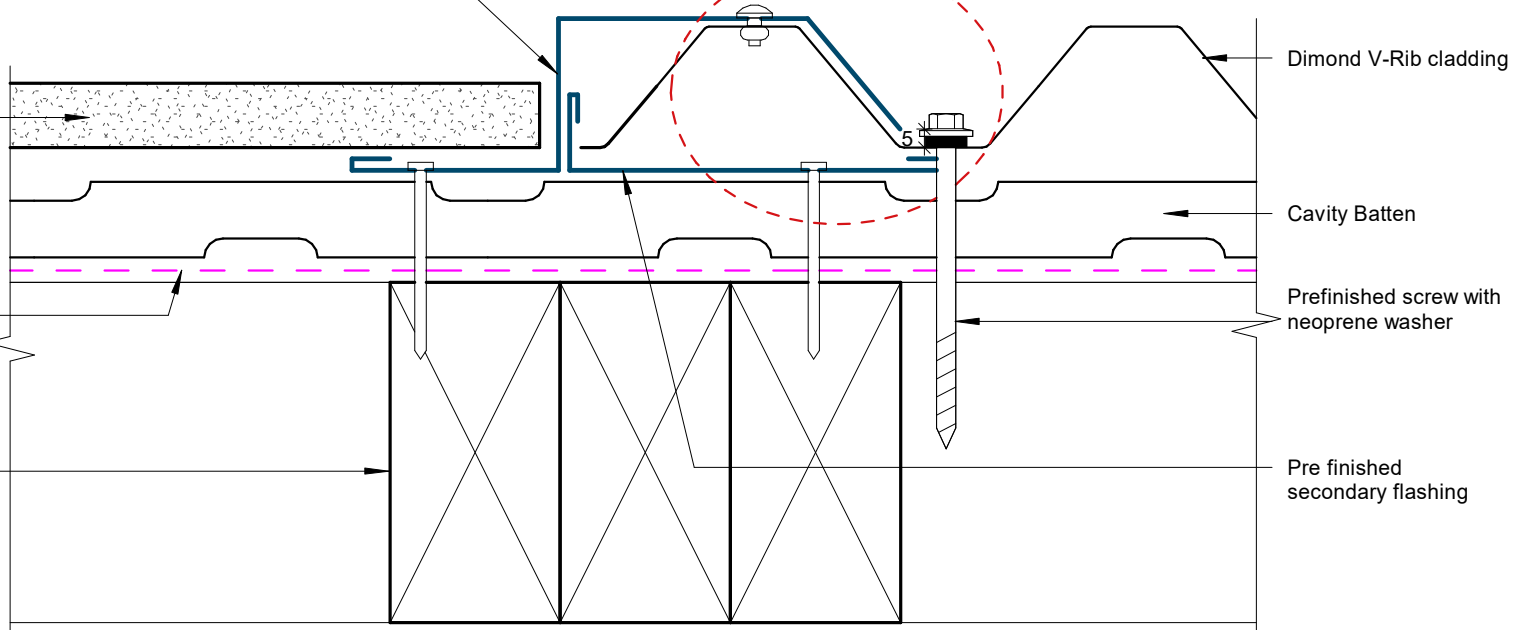
Adjoining Panel  
Cladding on cavity  
(indicative only)

Wall Underlay  
(shown dashed)

Wall framing  
(indicative only)



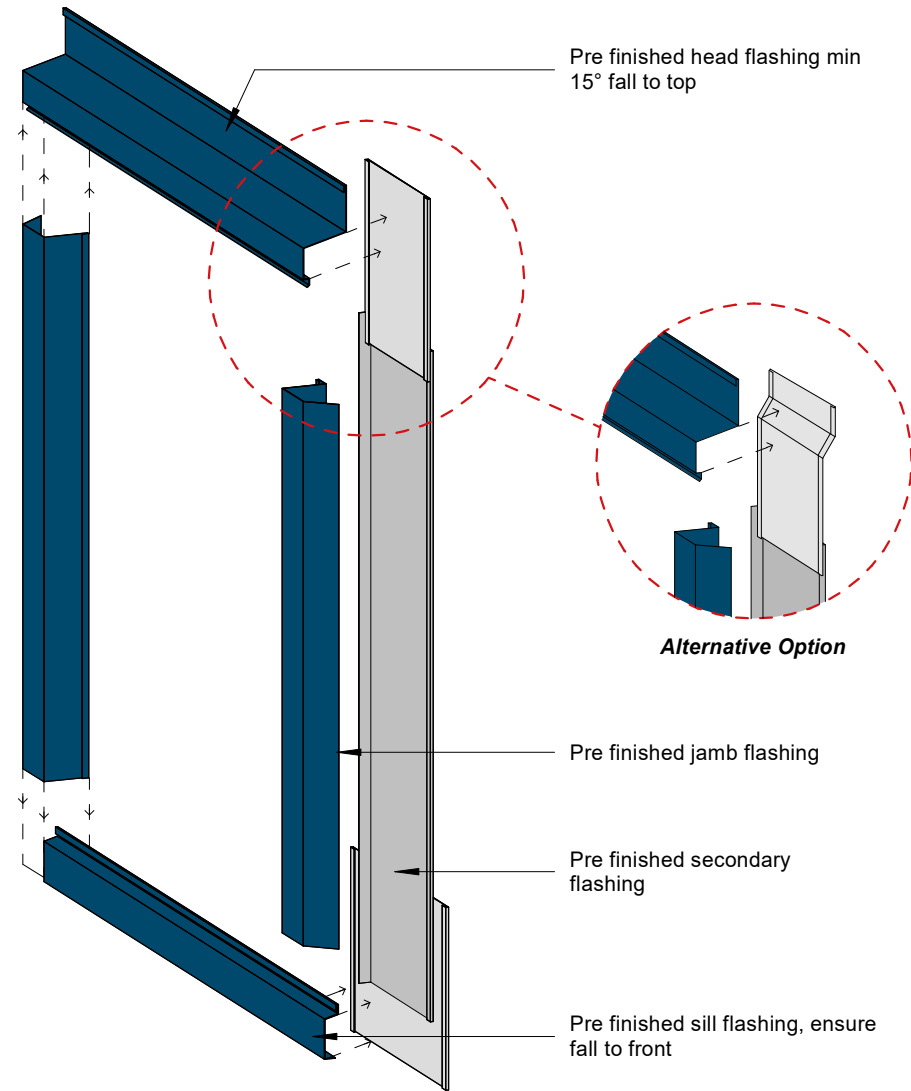
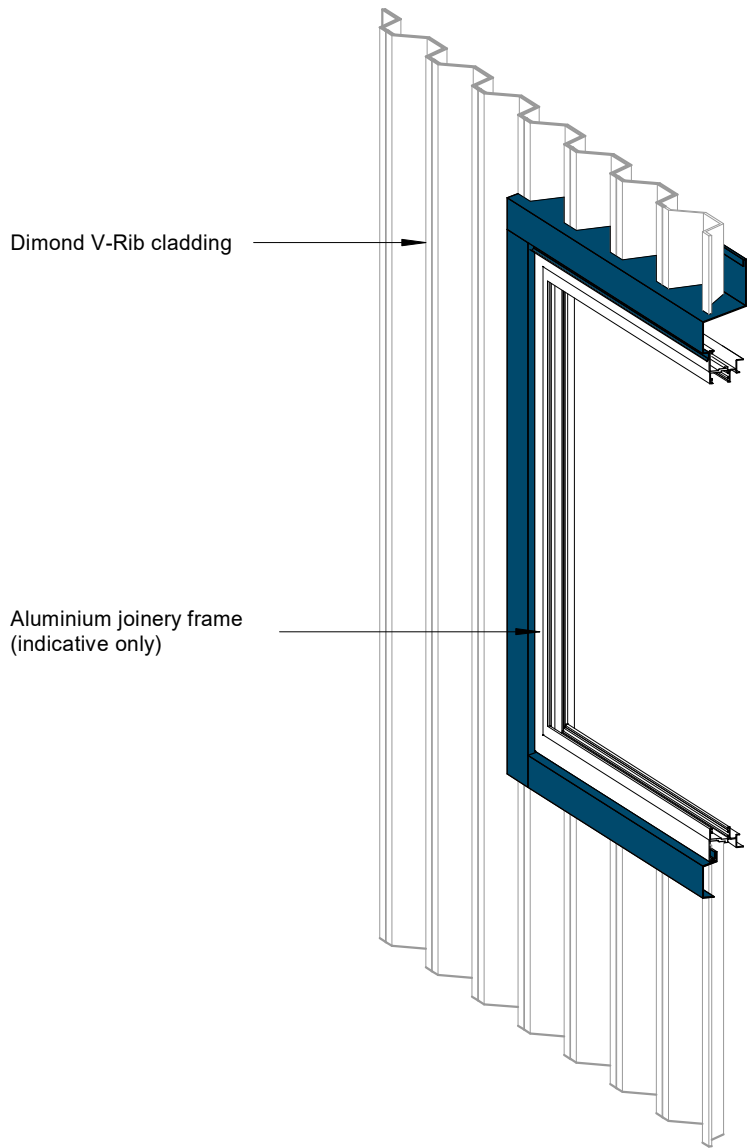
**Alternative Option**



**GENERAL NOTE**

Cavity battens or timber framing that contain copper must be separated from steel cladding by a strip of wall or roof underlay or DPC.

# Cladding to Panel Junction Detail



**GENERAL NOTE**

Cavity battens or timber framing that contain copper must be separated from steel cladding by a strip of wall or roof underlay or DPC.

Flashing to match wall cladding

Materials & Fixings as per Dimond Technical Data, E2/AS1 & MRM Code of Practice

# 3D Window Flashing Detail

Rev: 1 V-Rib Residential Vertical Cladding