

V-RIB

RESIDENTIAL HORIZONTAL WALL CLADDING

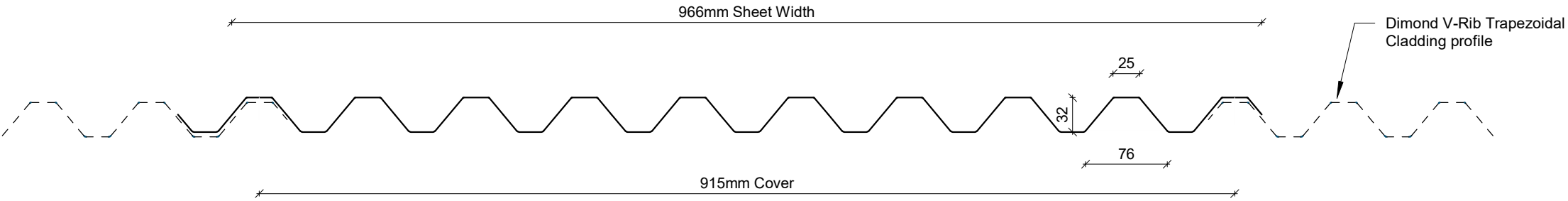
DETAILS:

REV:

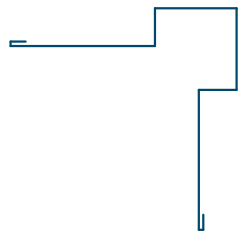
DATE:

VRRHC00	Cover Sheet	1	July 2025
VRRHC01	Profile Summary	1	July 2025
VRRHC02	Typical Flashing Details	1	July 2025
VRRHC03	Barge Flashing Detail	1	July 2025
VRRHC04	External Corner Detail	1	July 2025
VRRHC05	Internal Corner Detail	1	July 2025
VRRHC06	Base Detail	1	July 2025
VRRHC07	Soffit Detail	1	July 2025
VRRHC08	Window/ Door Head Detail	1	July 2025
VRRHC09	Window/ Door Jamb Detail	1	July 2025
VRRHC10	Window Sill Detail	1	July 2025
VRRHC11	Meterbox Head Detail	1	July 2025
VRRHC12	Meterbox Jamb Detail	1	July 2025
VRRHC13	Meterbox Sill Detail	1	July 2025
VRRHC14	Pipe Penetration Detail	1	July 2025
VRRHC15	Cladding to Concrete Junction Detail	1	July 2025
VRRHC16	Cladding to Brick Junction Detail	1	July 2025
VRRHC17	Cladding to Panel Junction Detail	1	July 2025
VRRHC18	3D Window Flashing Detail	1	July 2025

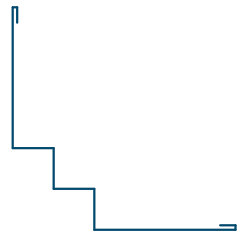
PROFILE OVERVIEW	
MINIMUM PITCH	3°
RIB TYPE	Low
RIBS PER SHEET	5 Ribs per sheet
WIDTH	755mm Cover, 810mm Sheet



Profile Summary



External Corner Flashing



Internal Corner Flashing



Window Head Flashing



Barge Flashing



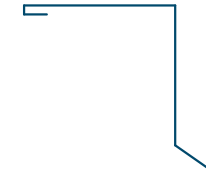
Window Sill Flashing



Base Flashing



Window Jamb Flashing



Soffit Flashing

Typical Flashing Details

Barge flashing to match roofing.
Materials & Fixings as per Dimond
Technical Data, E2/AS1 & MRM
Code of Practice

Cavity Batten

Z

Roof framing
(indicative only)

Dimond V-Rib Horizontal
fixed Wall Cladding profile

Prefinished screw with
neoprene washer

Wall Underlay
(shown dashed)

Dimond Roofing

Roof Underlay
(shown dashed)

Purlins
(indicative only)

Prefinished screw with
neoprene washer

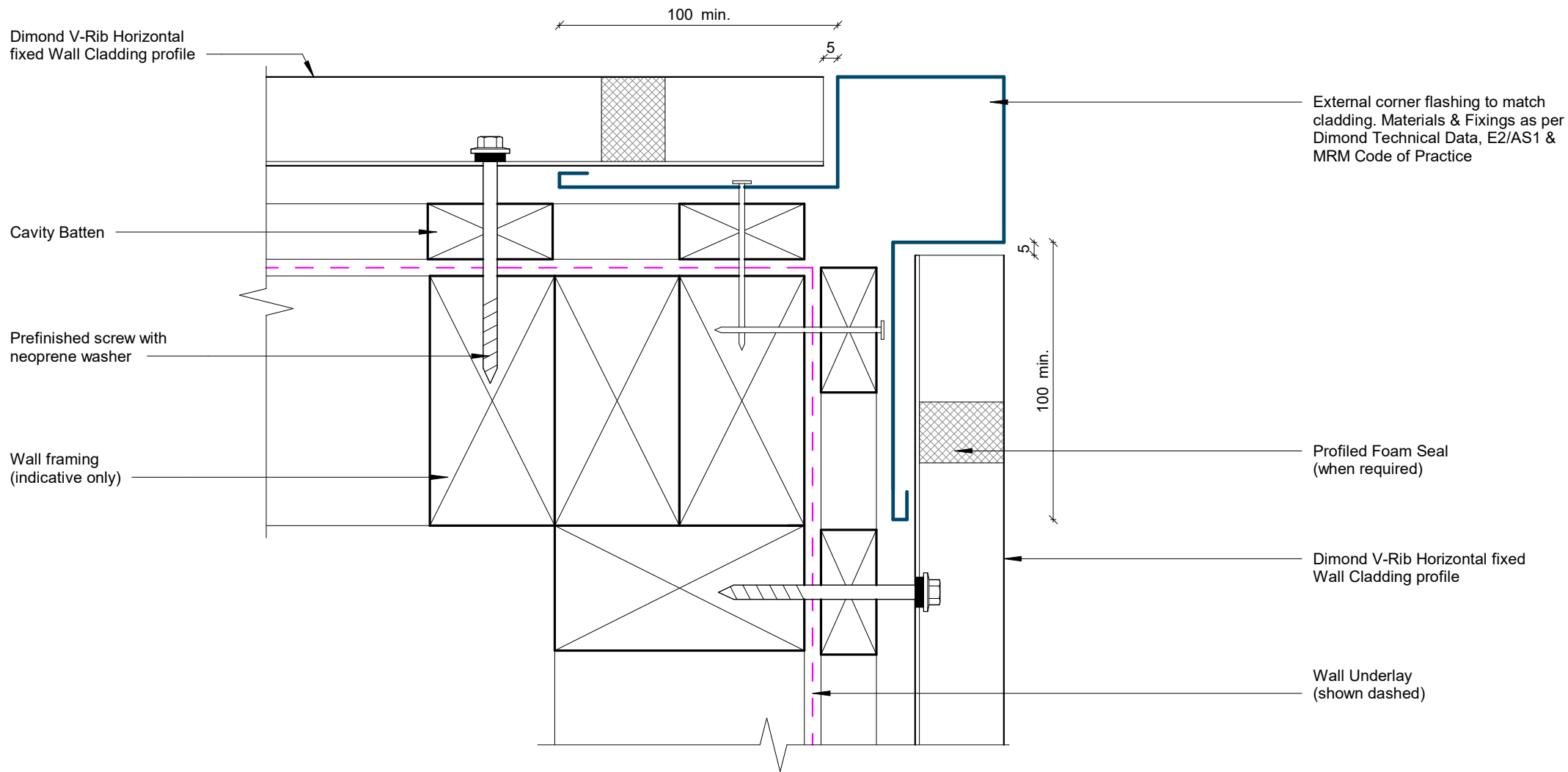
COVER DIMENSIONS AS PER E2/AS1	Z
SITUATION 1 Low, Medium & High Wind Zones where roof pitch $\geq 10^\circ$ (Excludes any soft edge or turn-down)	50 MIN
SITUATION 2 All roof pitches in Very High zone. Low, Medium & High Wind Zones where roof pitch $\leq 10^\circ$ (Excludes any soft edge or turn-down)	70 MIN
SITUATION 3 All roof pitches in Extra High zone. (Excludes any soft edge or turn-down)	90 MIN

GENERAL NOTE

Cavity battens or timber framing that contain copper must be separated from steel cladding by a strip of wall or roof underlay or DPC.

Wall framing
(indicative only)

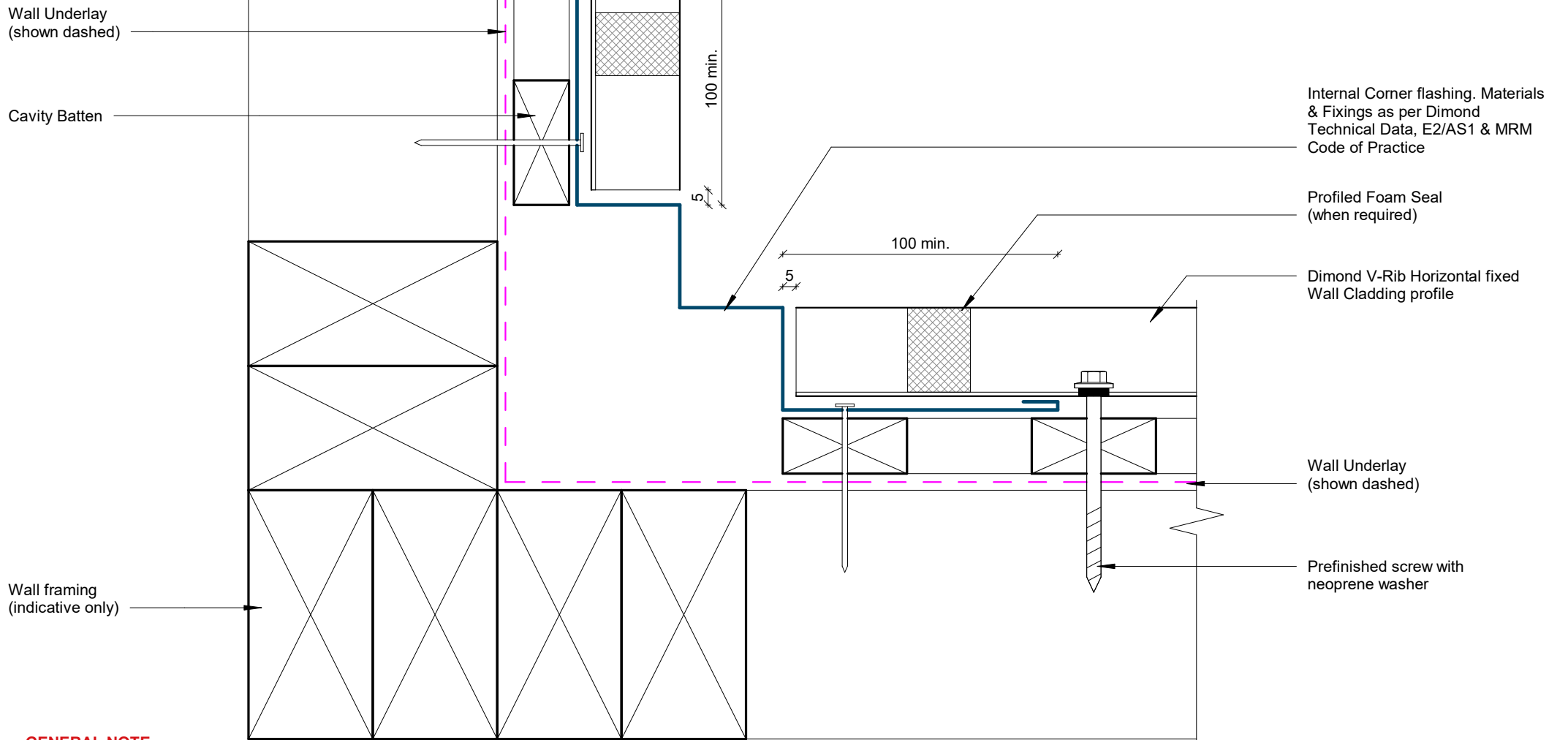
Barge Flashing Detail



GENERAL NOTE

Cavity battens or timber framing that contain copper must be separated from steel cladding by a strip of wall or roof underlay or DPC.

External Corner Detail



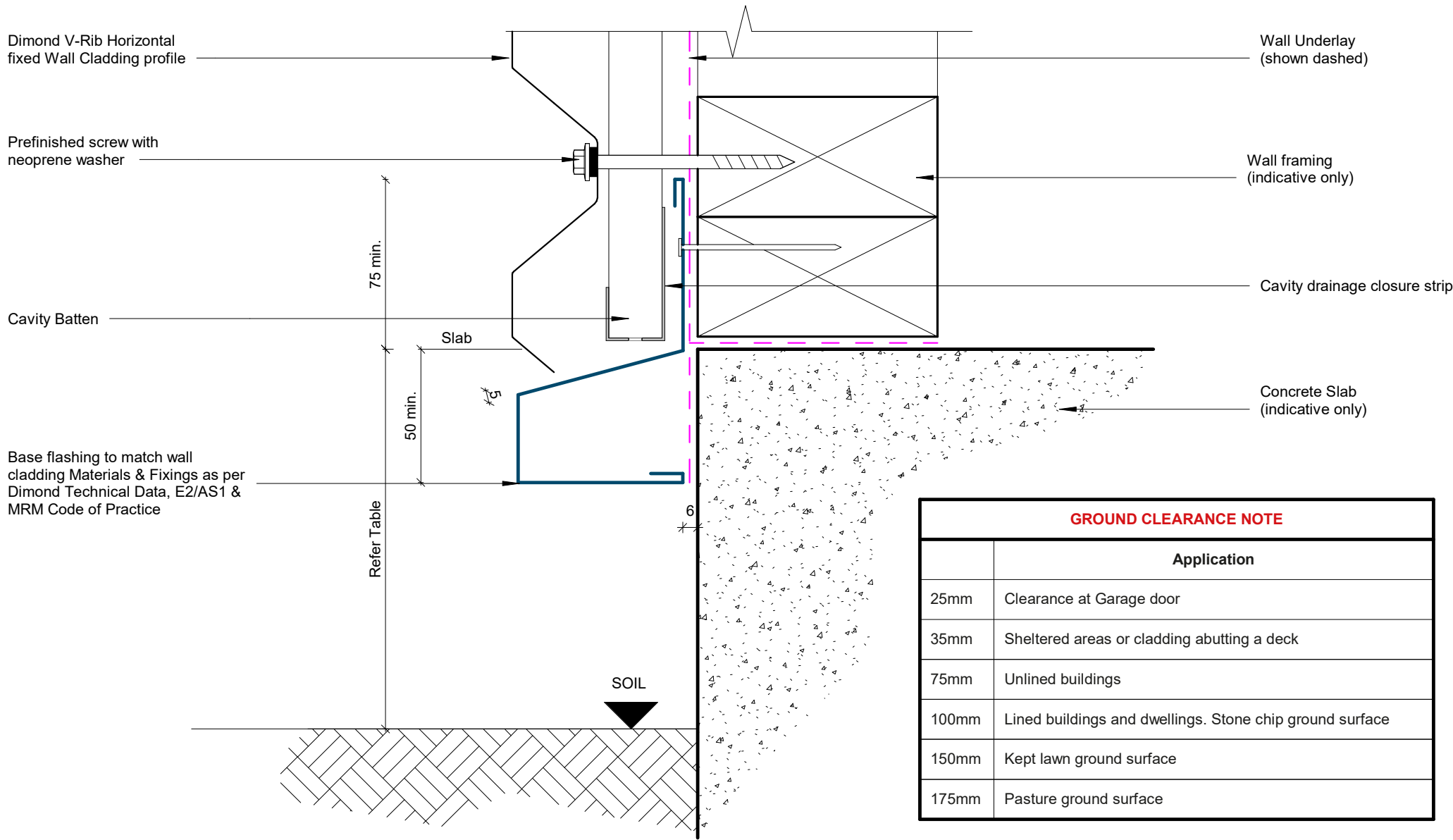
GENERAL NOTE

Cavity battens or timber framing that contain copper must be separated from steel cladding by a strip of wall or roof underlay or DPC.

Internal Corner Detail

Rev: 1

V-Rib Residential Horizontal Cladding



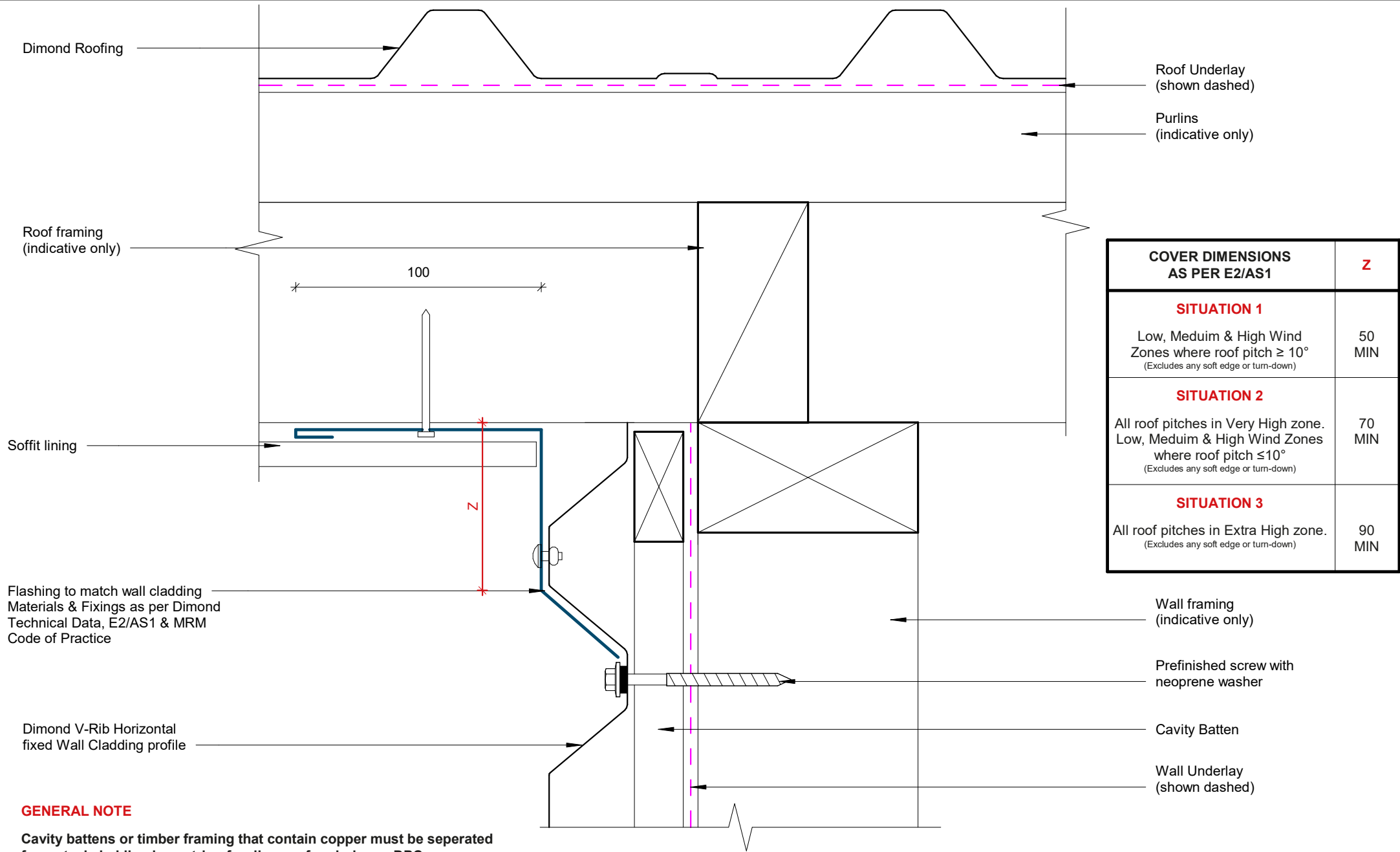
GROUND CLEARANCE NOTE

	Application
25mm	Clearance at Garage door
35mm	Sheltered areas or cladding abutting a deck
75mm	Unlined buildings
100mm	Lined buildings and dwellings. Stone chip ground surface
150mm	Kept lawn ground surface
175mm	Pasture ground surface

GENERAL NOTE

Cavity battens or timber framing that contain copper must be separated from steel cladding by a strip of wall or roof underlay or DPC.

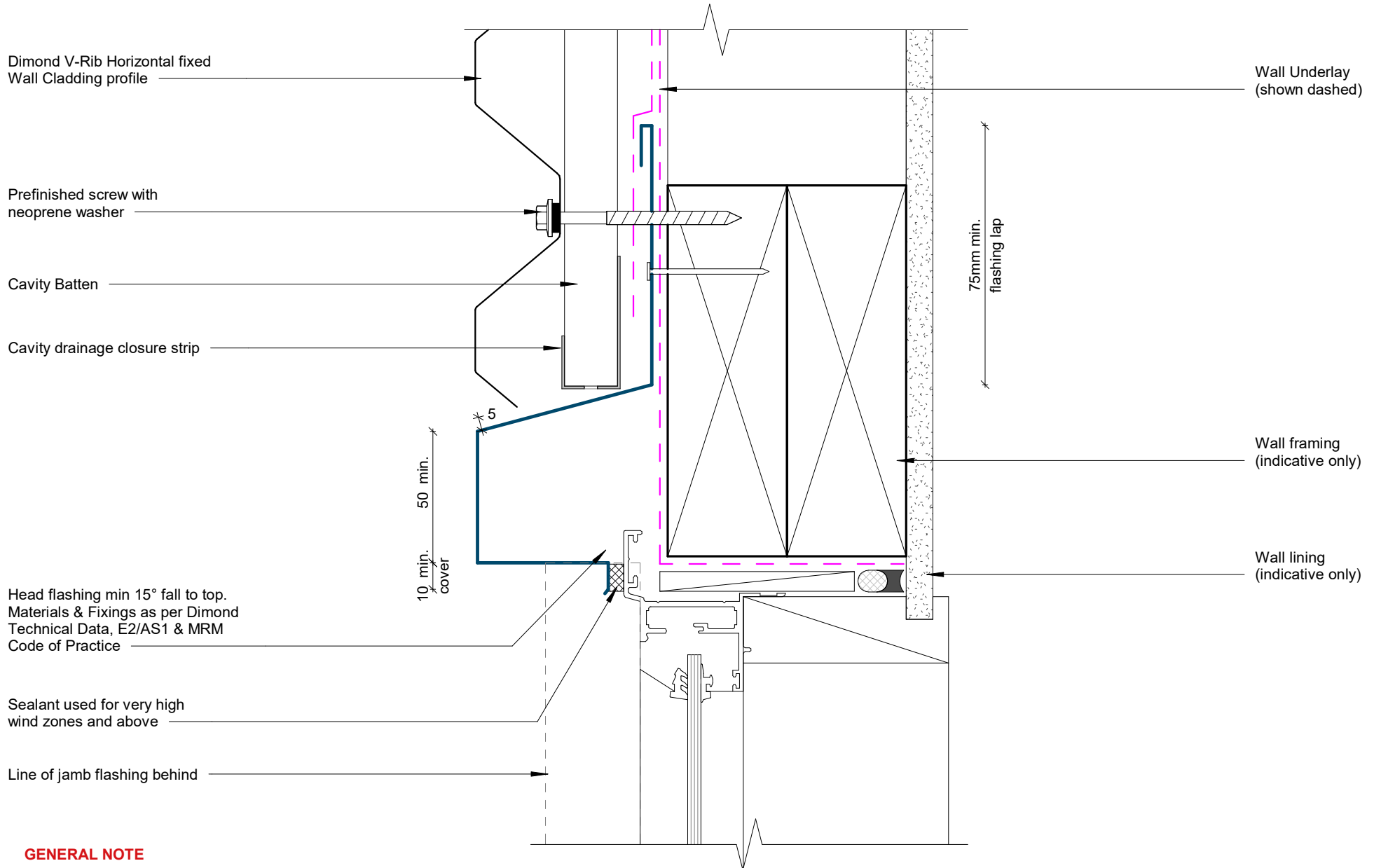
Base Detail



GENERAL NOTE

Cavity battens or timber framing that contain copper must be separated from steel cladding by a strip of wall or roof underlay or DPC.

Soffit Detail



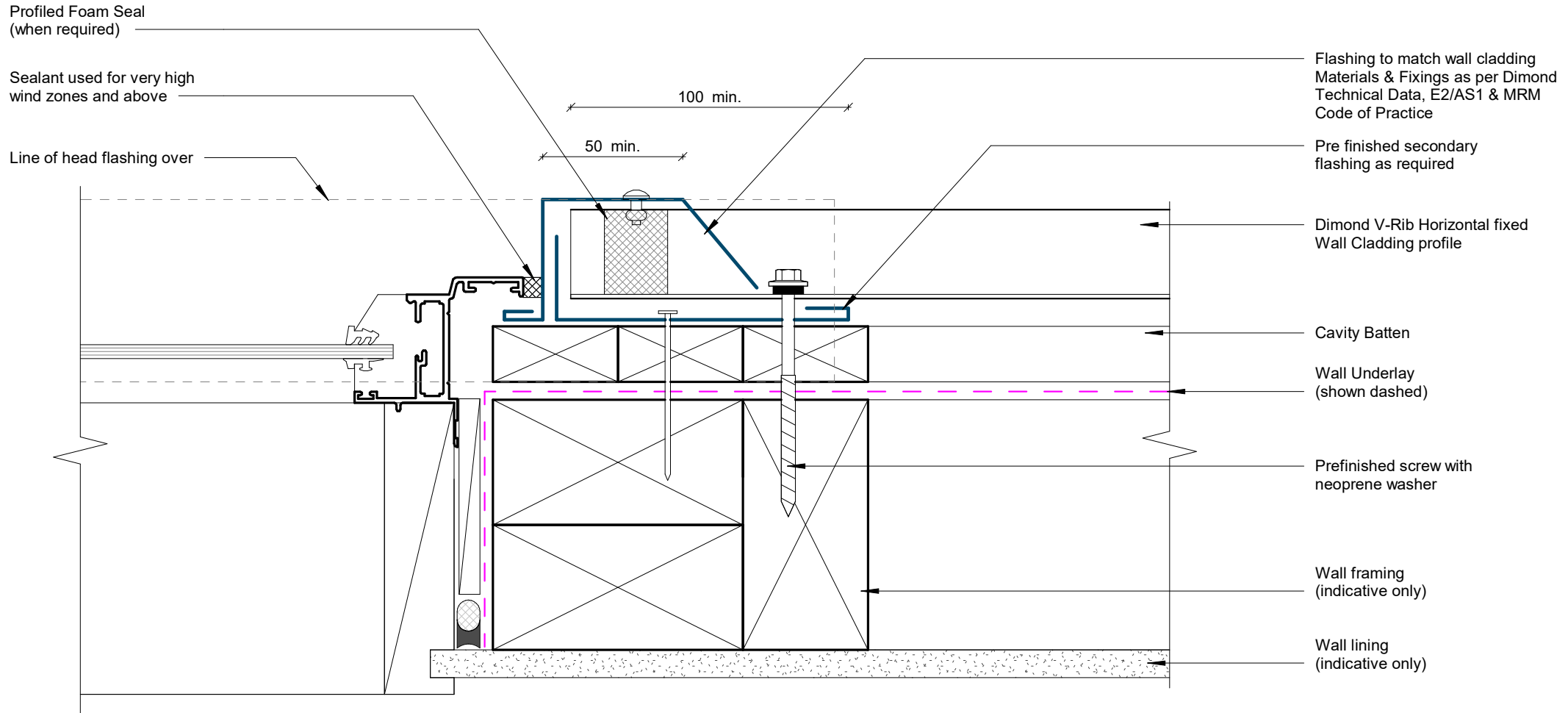
GENERAL NOTE

Cavity battens or timber framing that contain copper must be separated from steel cladding by a strip of wall underlay or DPC.

Window/ Door Head Detail

Rev: 1

V-Rib Residential Horizontal Cladding



GENERAL NOTE

Cavity battens or timber framing that contain copper must be separated from steel cladding by a strip of wall or roof underlay or DPC.

Window/ Door Jamb Detail

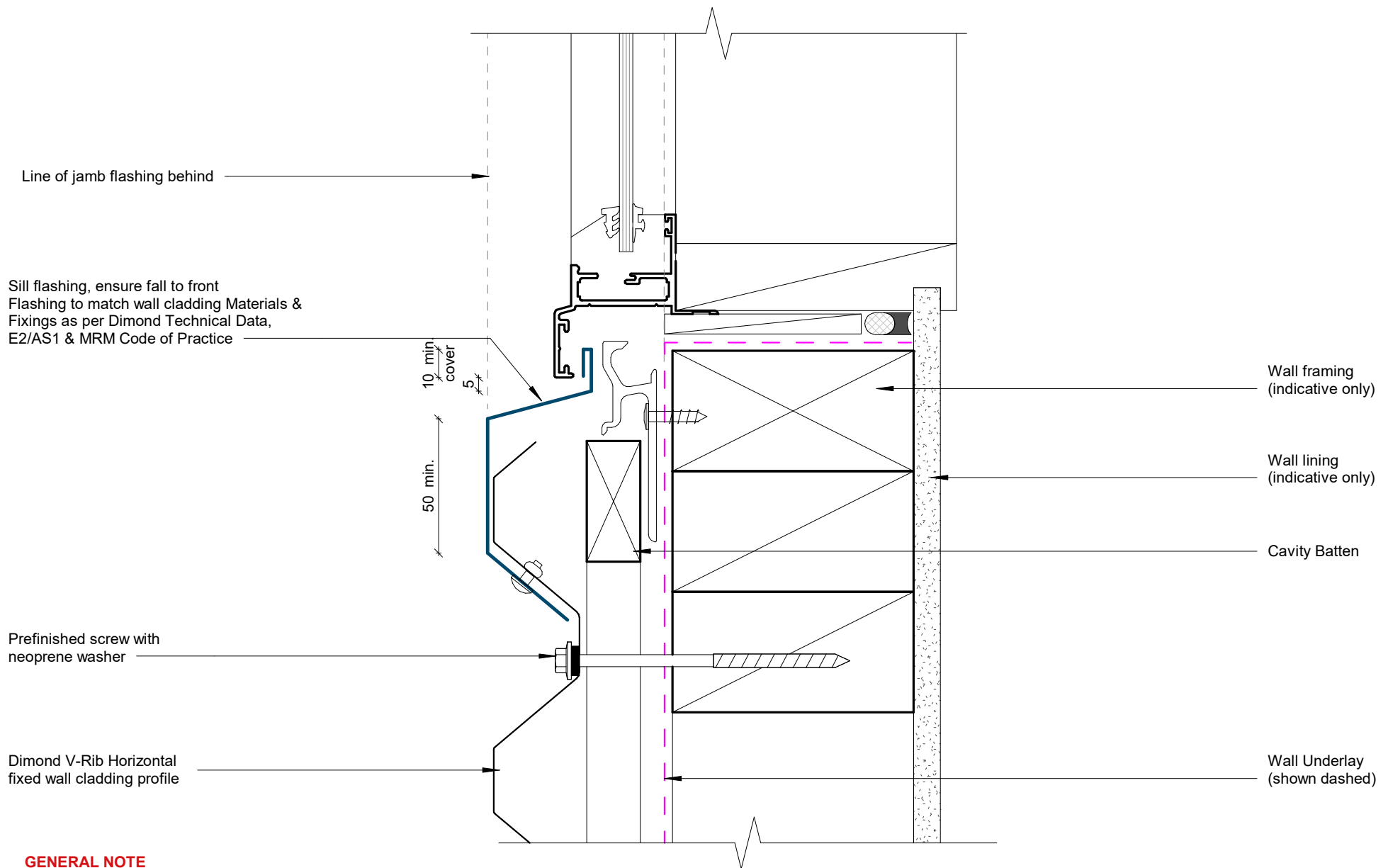
Rev: 1

V-Rib Residential Horizontal Cladding



©Dimond 2023, all rights reserved. The information and specifications contained in this document are proprietary to Dimond and may not be used other than for the purpose of designing or building a roof or roofing system solely using products supplied or approved by Dimond ("Permitted Purpose"). You may copy this document solely for the Permitted Purpose, but may not otherwise copy, publish, distribute or modify this document without Dimond's prior written consent. Dimond will not be liable for any use of this document or information and specifications contained in this document, other than for the Permitted Purpose

Date: July 2025 Scale: 1 : 2 Sheet: VRRHC09



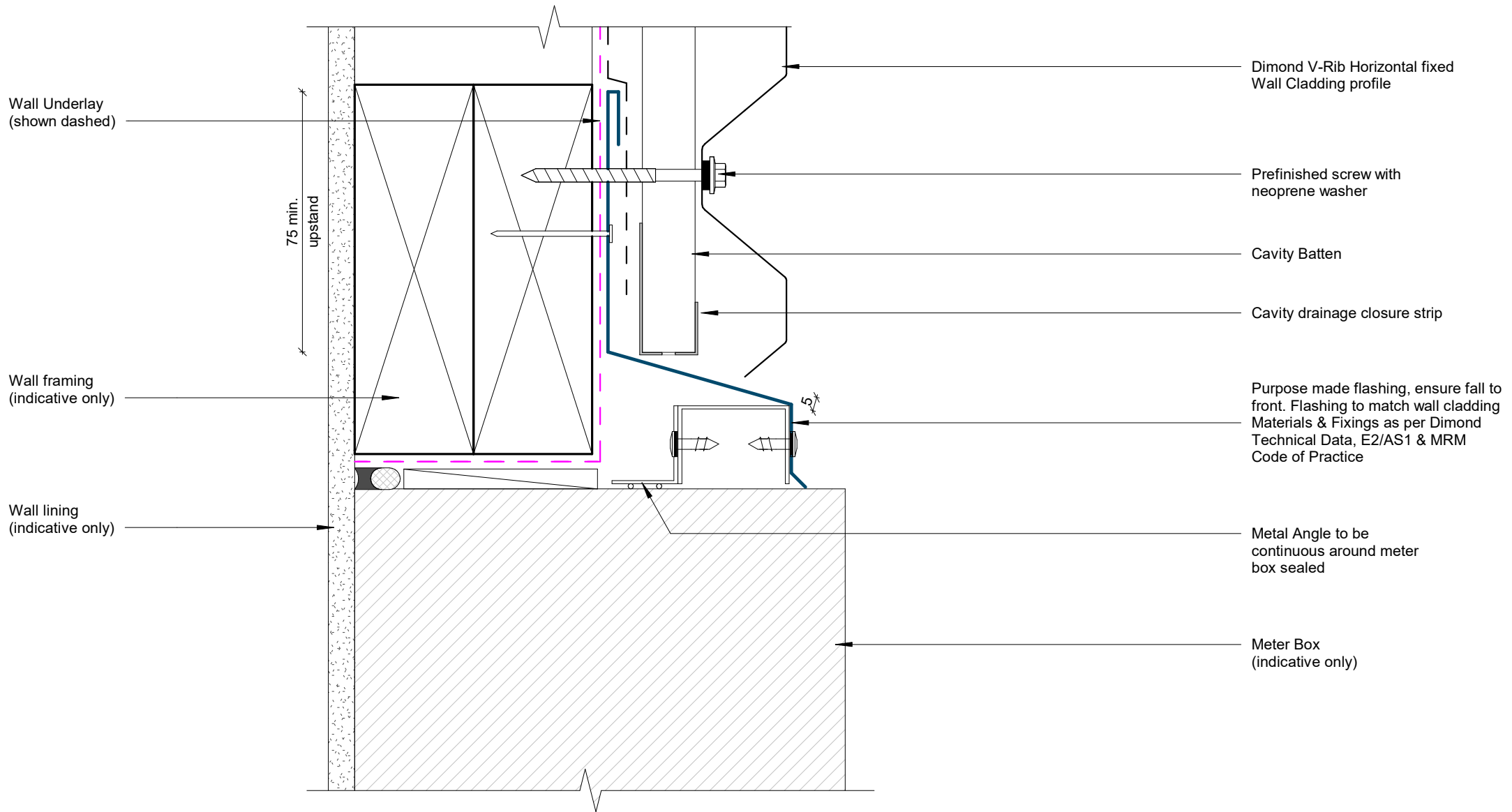
GENERAL NOTE

Cavity battens or timber framing that contain copper must be separated from steel cladding by a strip of wall or roof underlay or DPC.

Window Sill Detail

Rev: 1

V-Rib Residential Horizontal Cladding



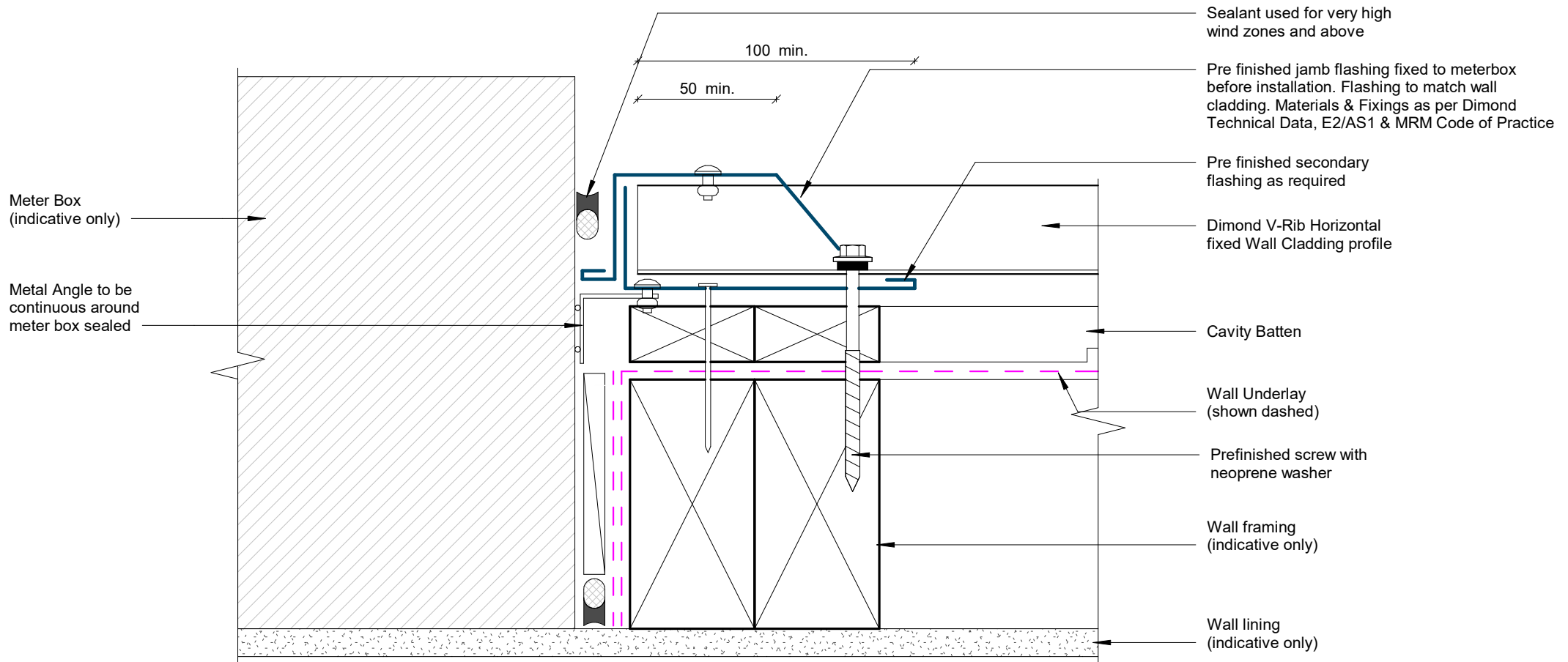
GENERAL NOTE

Cavity battens or timber framing that contain copper must be separated from steel cladding by a strip of wall or roof underlay or DPC.

Meterbox Head Detail

Rev: 1

V-Rib Residential Horizontal Cladding



GENERAL NOTE

Cavity battens or timber framing that contain copper must be separated from steel cladding by a strip of wall or roof underlay or DPC.

Meterbox Jamb Detail

Rev: 1

V-Rib Residential Horizontal Cladding

Meter Box
(indicative only)

Wall lining
(indicative only)

Air seal
(indicative only)

Cavity Batten

Wall framing
(indicative only)

Wall Underlay
(shown dashed)

Metal Angle to be
continuous around meter
box sealed

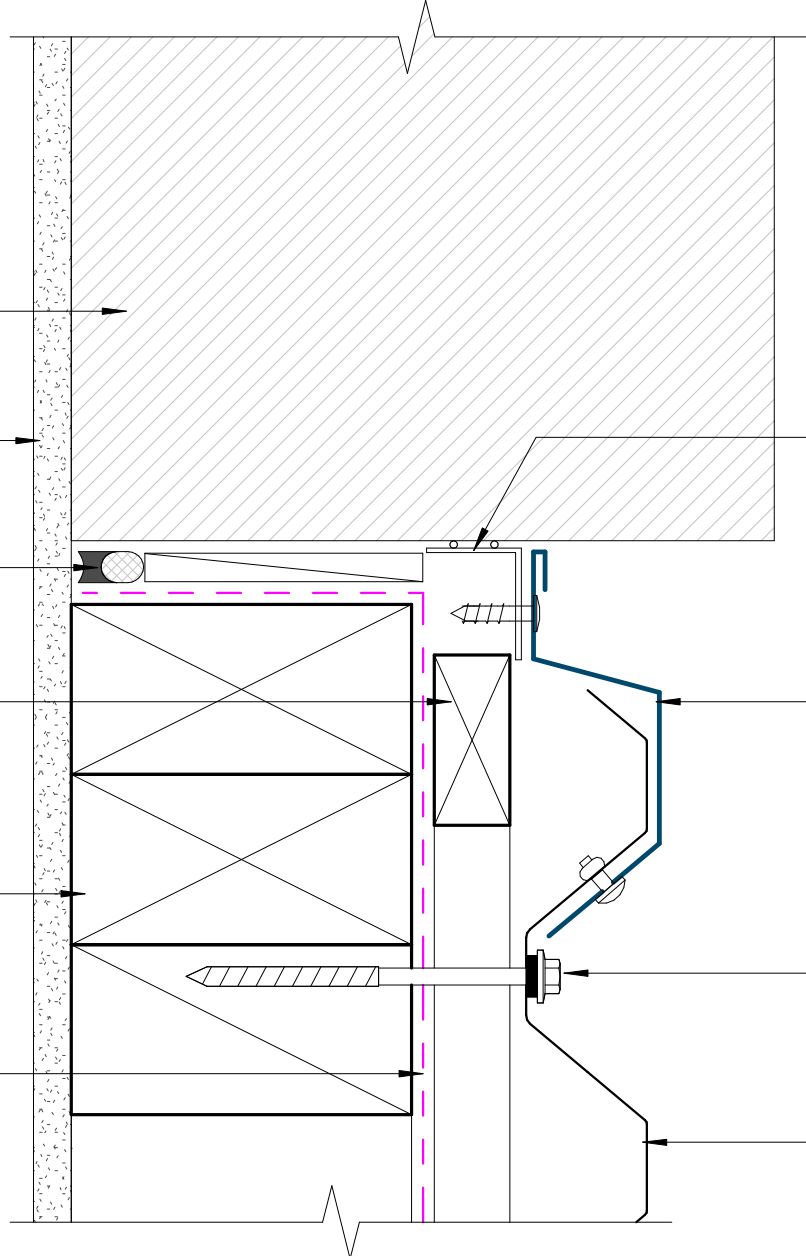
Pre finished flashing, ensure fall to
front. Flashing to match wall cladding
Materials & Fixings as per Dimond
Technical Data, E2/AS1 & MRM
Code of Practice

Prefinished screw with
neoprene washer

Dimond V-Rib Horizontal fixed
Wall Cladding profile

GENERAL NOTE

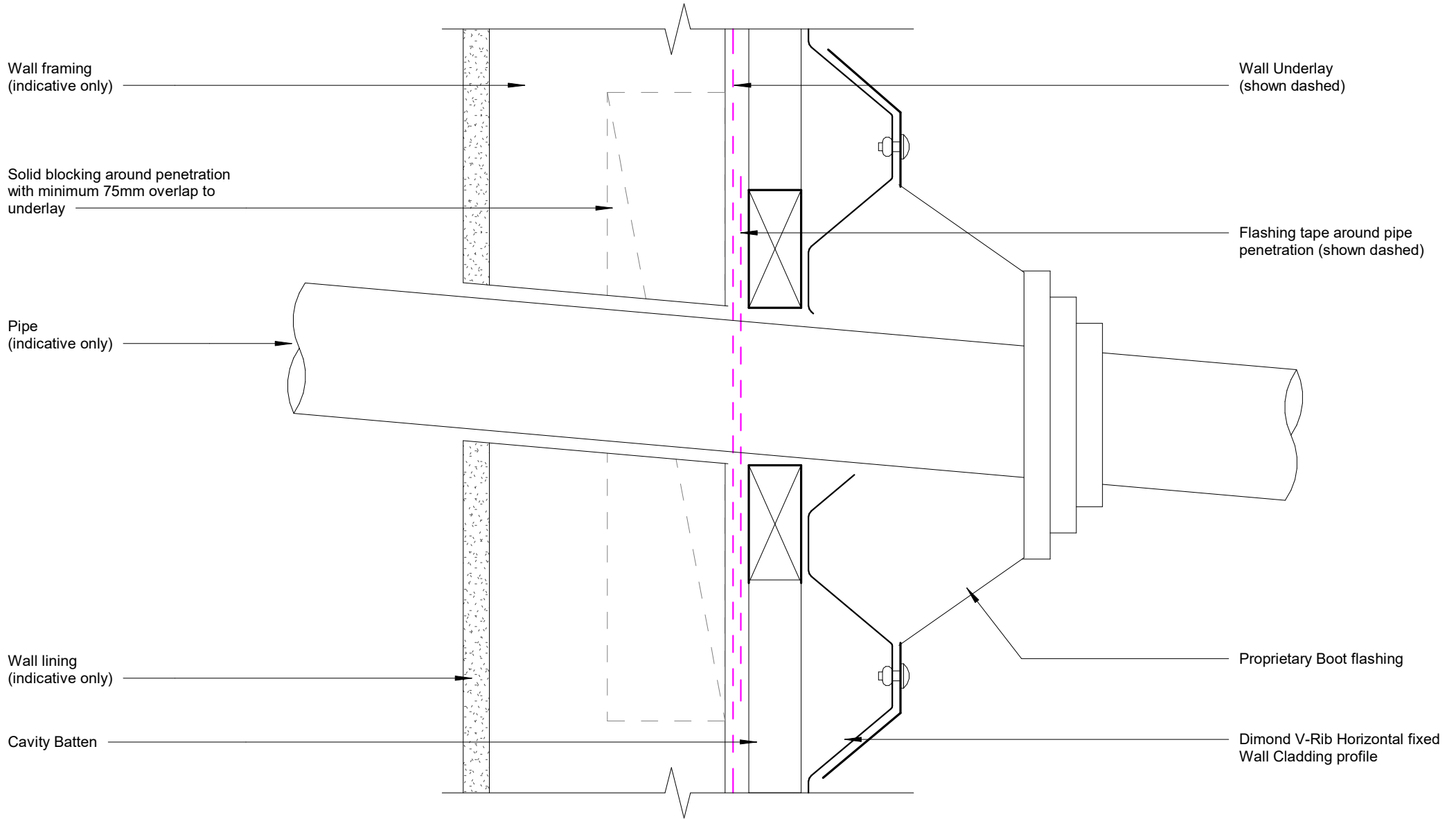
Cavity battens or timber framing that contain copper must be separated from steel cladding by a strip of wall or roof underlay or DPC.



Meterbox Sill Detail

Rev: 1

V-Rib Residential Horizontal Cladding



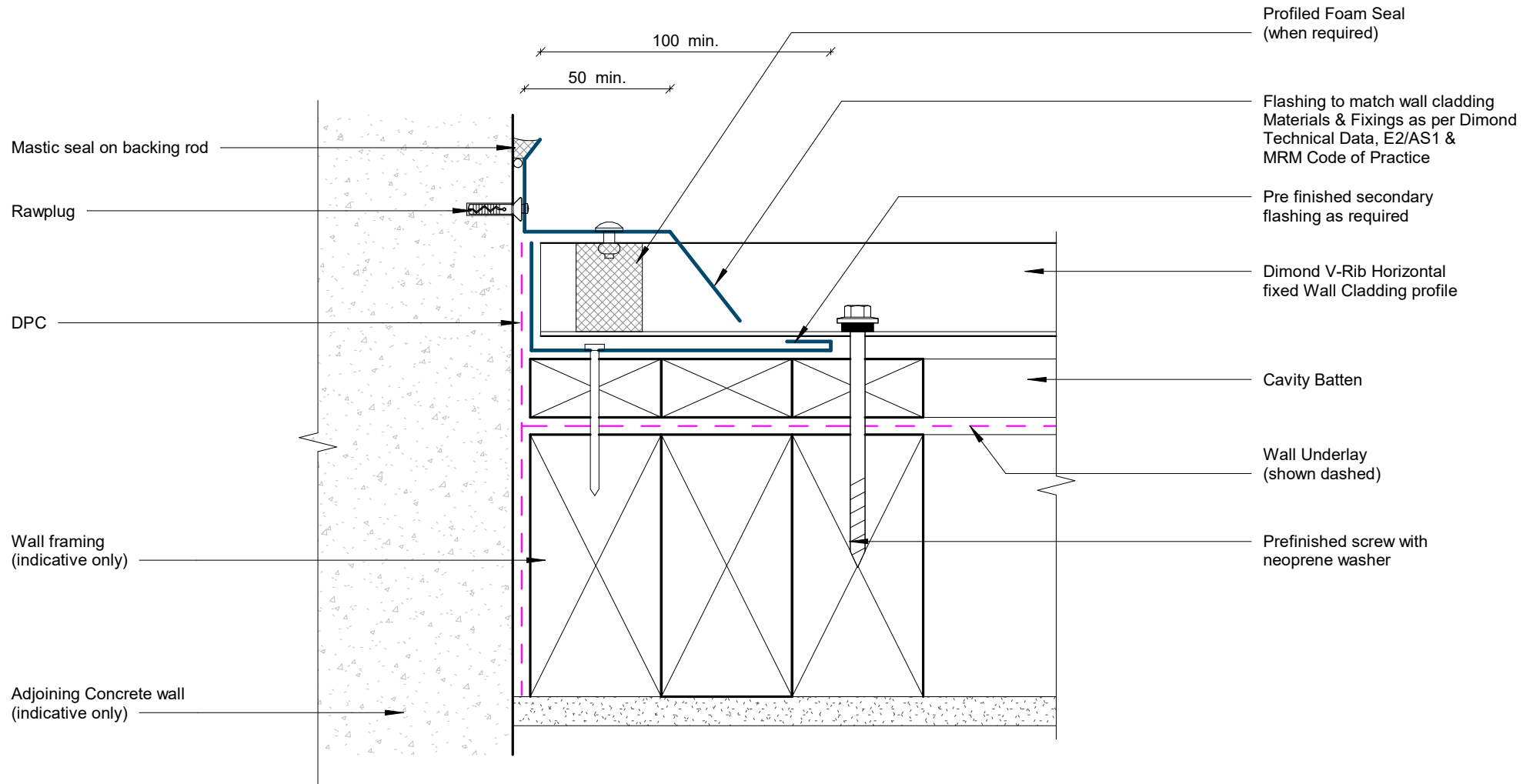
GENERAL NOTE

Cavity battens or timber framing that contain copper must be separated from steel cladding by a strip of wall or roof underlay or DPC.

Pipe Penetration Detail

Rev: 1

V-Rib Residential Horizontal Cladding



GENERAL NOTE

Cavity battens or timber framing that contain copper must be separated from steel cladding by a strip of wall or roof underlay or DPC.

Cladding to Concrete Junction Detail

Rev: 1

V-Rib Residential Horizontal Cladding

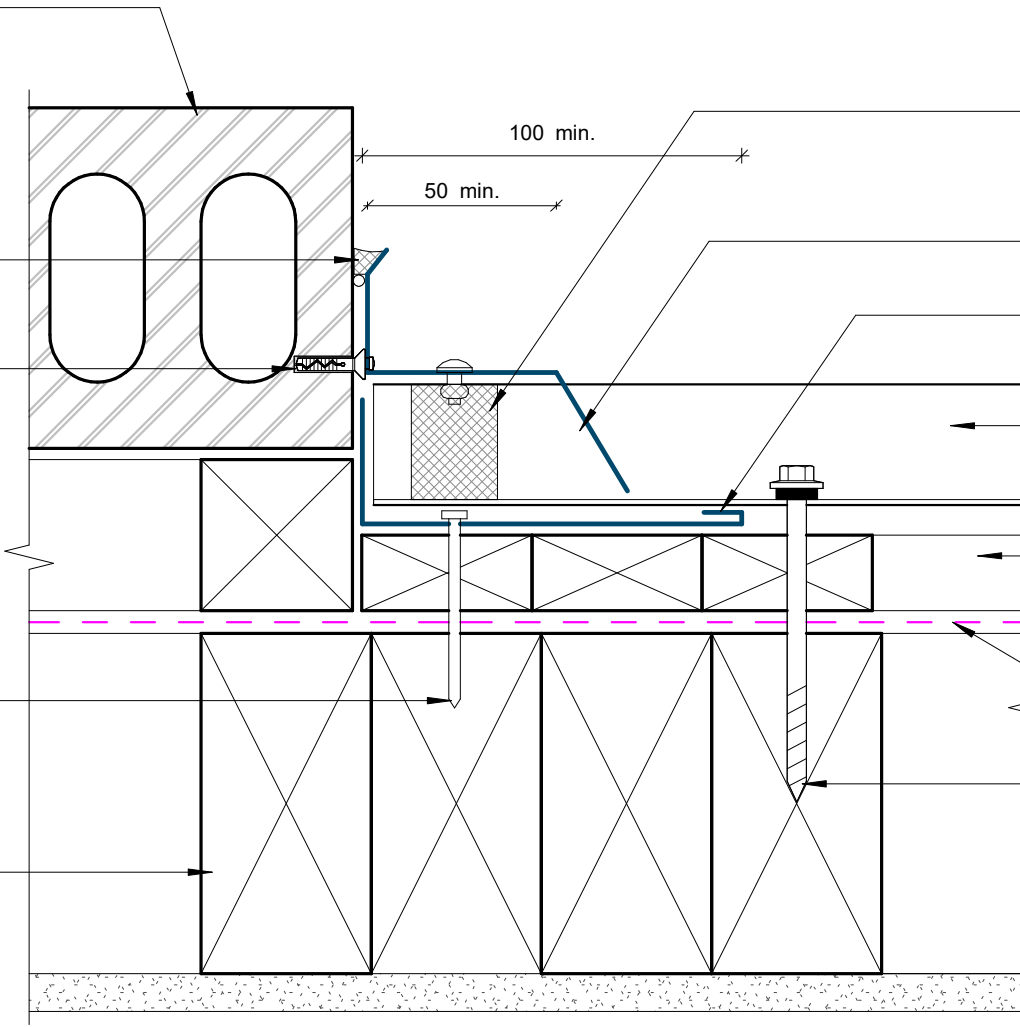
Adjoining Brick veneer on cavity
(indicative only)

Mastic seal on backing rod

Rawplug

Prefinished screw

Wall framing
(indicative only)



Profiled Foam Seal
(when required)

Flashing to match wall cladding
Materials & Fixings as per Dimond
Technical Data, E2/AS1 &
MRM Code of Practice

Pre finished secondary
flashing as required

Dimond V-Rib
Horizontal cladding

Cavity Batten

Wall Underlay
(shown dashed)

Prefinished screw with
neoprene washer

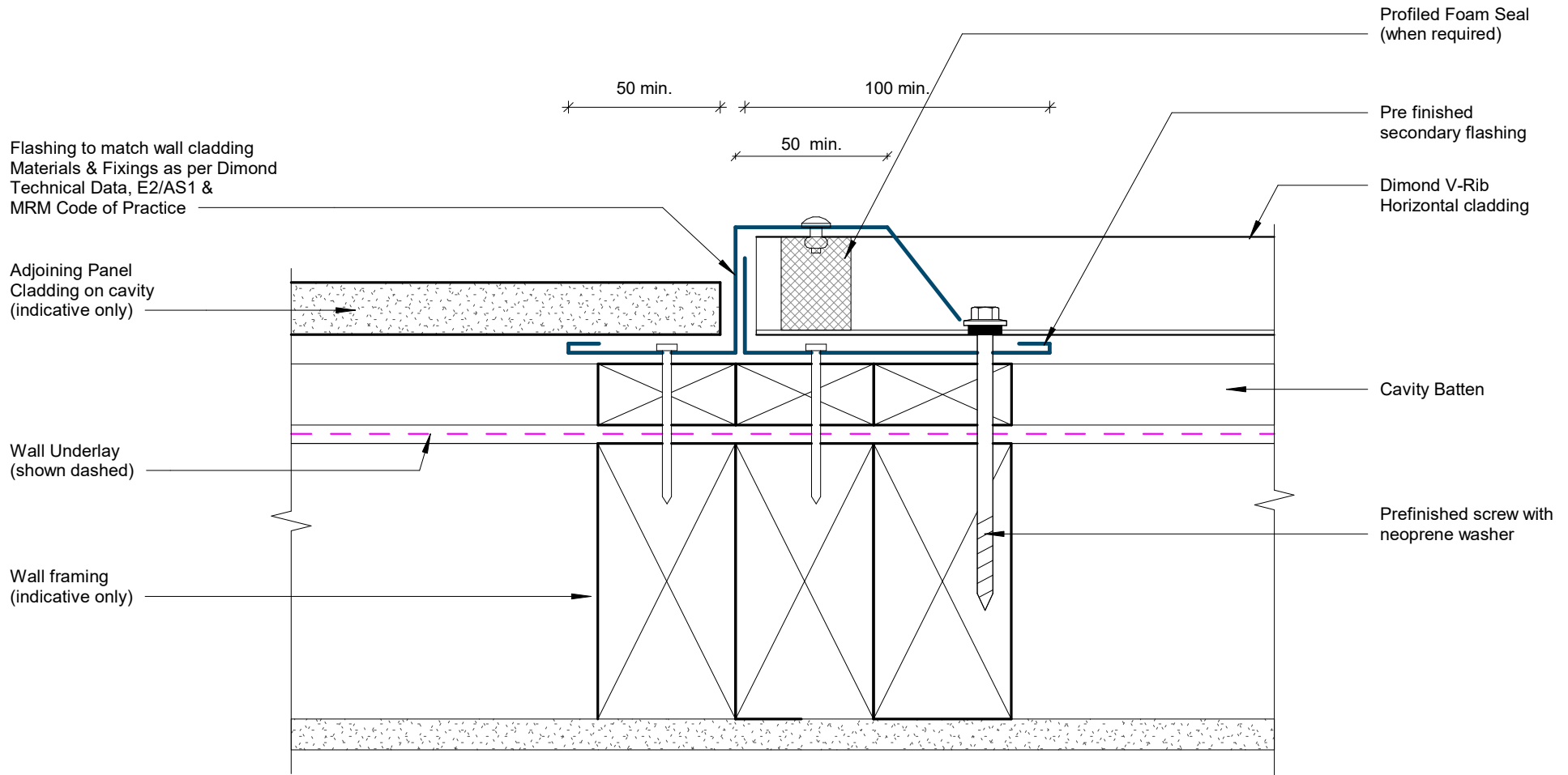
GENERAL NOTE

Cavity battens or timber framing that contain copper must be separated from steel cladding by a strip of wall or roof underlay or DPC.

Cladding to Brick Junction Detail

Rev: 1

V-Rib Residential Horizontal Cladding



GENERAL NOTE

Cavity battens or timber framing that contain copper must be separated from steel cladding by a strip of wall or roof underlay or DPC.

Cladding to Panel Junction Detail

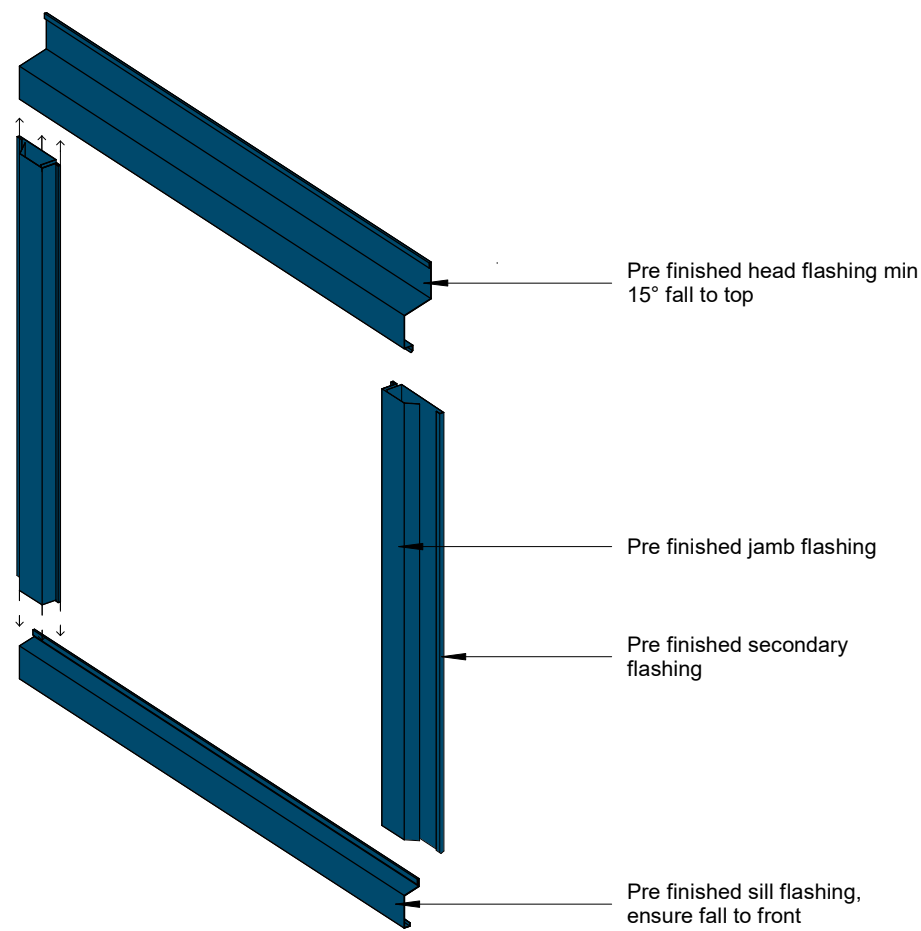
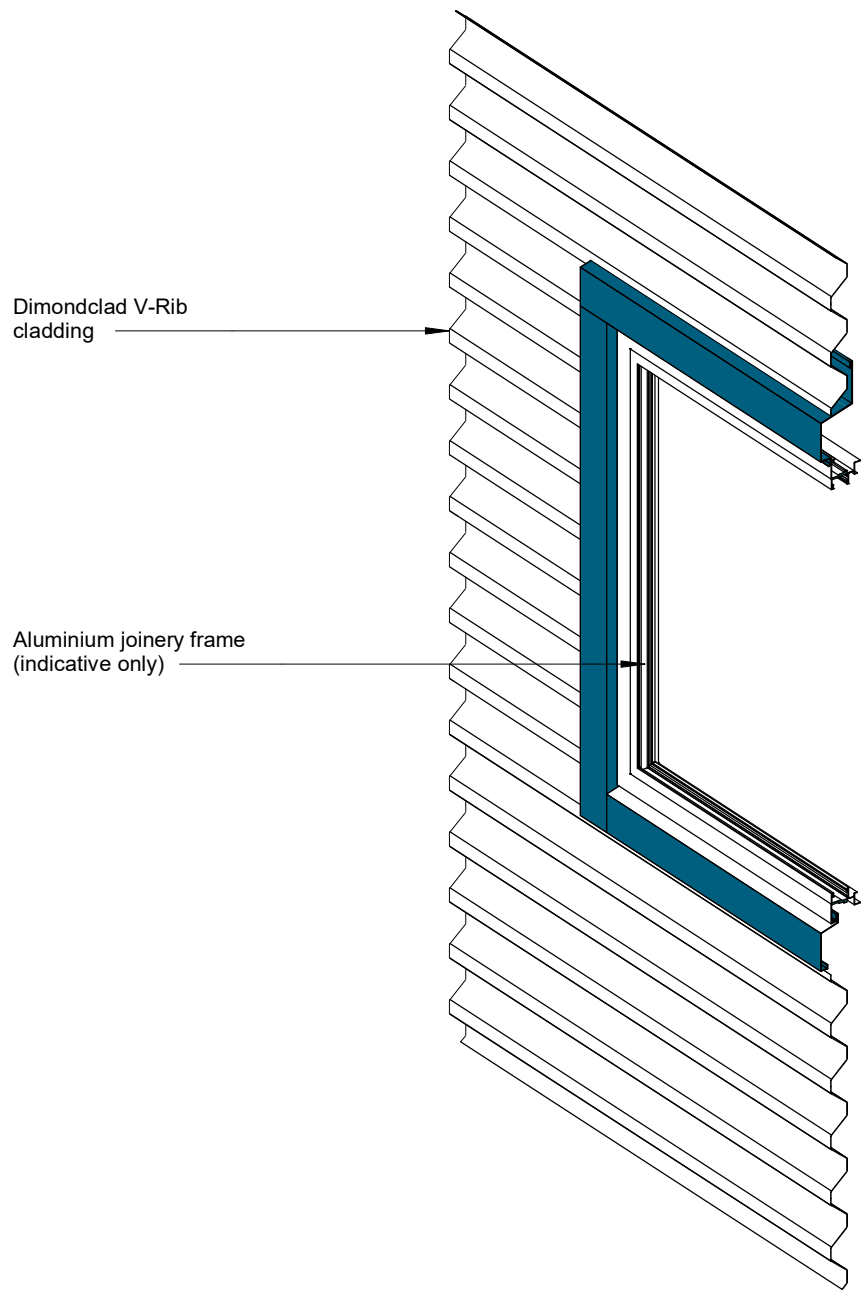
Rev: 1

V-Rib Residential Horizontal Cladding



©Dimond 2023, all rights reserved. The information and specifications contained in this document are proprietary to Dimond and may not be used other than for the purpose of designing or building a roof or roofing system solely using products supplied or approved by Dimond ("Permitted Purpose"). You may copy this document solely for the Permitted Purpose, but may not otherwise copy, publish, distribute or modify this document without Dimond's prior written consent. Dimond will not be liable for any use of this document or information and specifications contained in this document, other than for the Permitted Purpose

Date: July 2025 Scale: 1 : 2 Sheet: VRRHC17



3D Window Flashing Detail

Rev: 1 V-Rib Residential Horizontal Cladding