

V RIB

COMMERCIAL VERTICAL WALL CLADDING

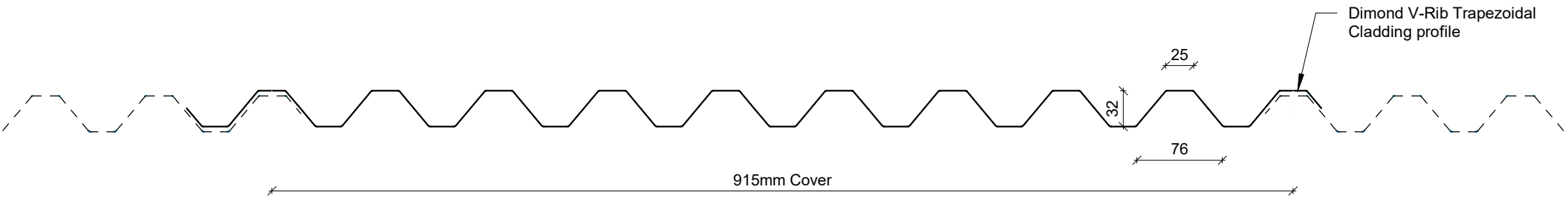
DETAILS:

REV:

DATE:

VRCVC00	Cover Sheet	1	Sep 2025
VRCVC01	Profile Summary	1	Sep 2025
VRCVC02	Typical Flashing Detail	1	Sep 2025
VRCVC03	Barge Detail	1	Sep 2025
VRCVC04	Wall to Roof Transverse Detail	1	Sep 2025
VRCVC05	Wall to Roof Detail	1	Sep 2025
VRCVC06	Box Gutter Detail	1	Sep 2025
VRCVC07	Wall to Roof Apex Detail	1	Sep 2025
VRCVC08	External Corner Detail	1	Sep 2025
VRCVC09	Internal Corner Detail	1	Sep 2025
VRCVC10	Base Detail	1	Sep 2025
VRCVC11	Window / Door Head Detail	1	Sep 2025
VRCVC12	Window / Door Jamb Detail	1	Sep 2025
VRCVC13	Window Sill Detail	1	Sep 2025

PROFILE OVERVIEW	
RIB TYPE	High
RIBS PER SHEET	10 Ribs per sheet
WIDTH	915mm Cover



Profile Summary

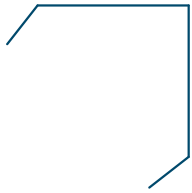


©Dimond 2023, all rights reserved. The information and specifications contained in this document are proprietary to Dimond and may not be used other than for the purpose of designing or building a roof or roofing system solely using products supplied or approved by Dimond ("Permitted Purpose"). You may copy this document solely for the Permitted Purpose, but may not otherwise copy, publish, distribute or modify this document without Dimond's prior written consent. Dimond will not be liable for any use of this document or information and specifications contained in this document, other than for the Permitted Purpose

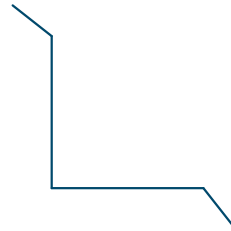
Rev: 1

V Rib Commercial Vertical Cladding

Date: Sep 2025 Scale: 1 : 5 Sheet: VRCVC01



**External Corner /
Barge Flashing**



Internal Corner Flashing



Base Flashing



Eaves Flashing



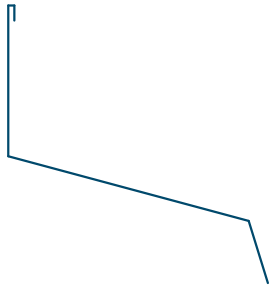
Window Sill Flashing



Window Head Flashing



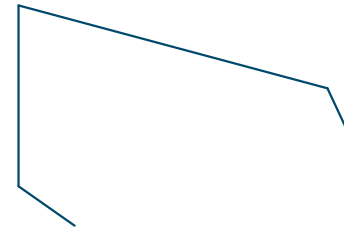
Window Jamb Flashing



Wall to Roof Flashing 1



Wall to Roof Flashing 2



Wall Roof to Wall Apex Flashing

Typical Flashing Detail

Barge flashing to match roofing.
Materials & Fixings as per Dimond
Technical Data & MRM Code of Practice

Profiled foam closure
where required

100

Prefinished screw with
neoprene washer

Dimond DHS girt

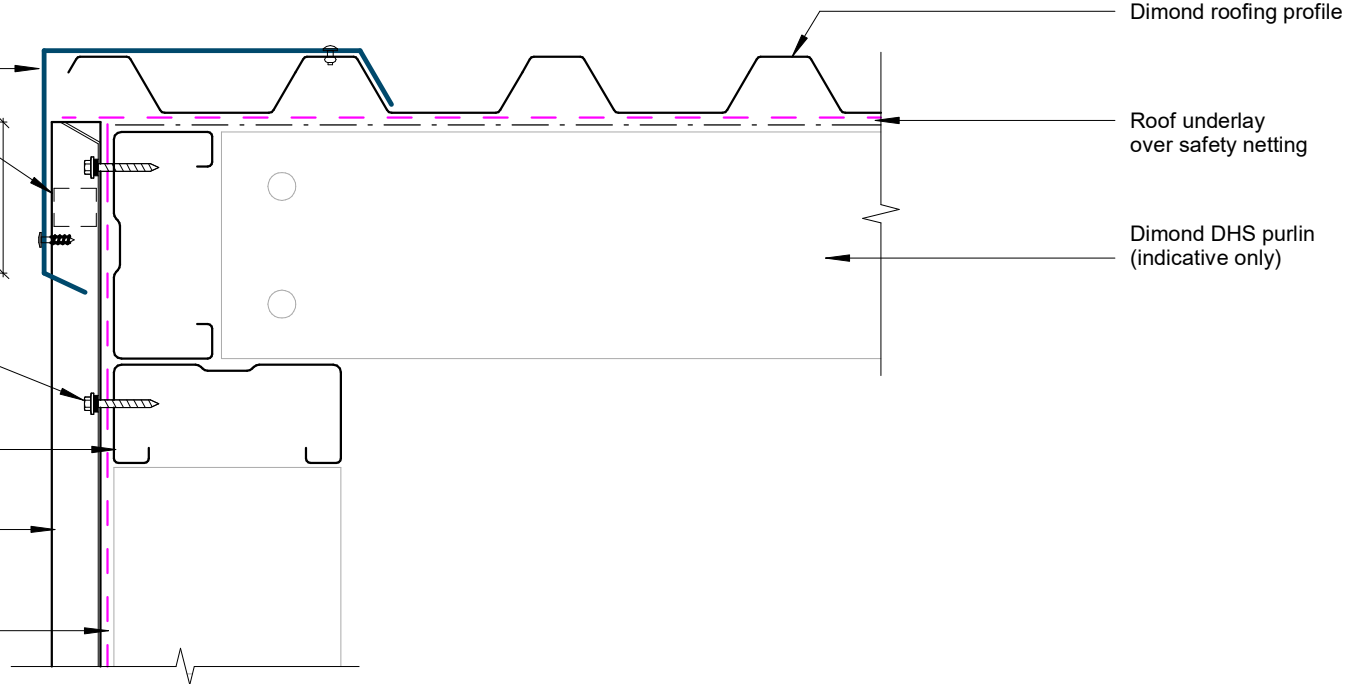
Dimond V-Rib cladding

Wall Underlay
(shown dashed)

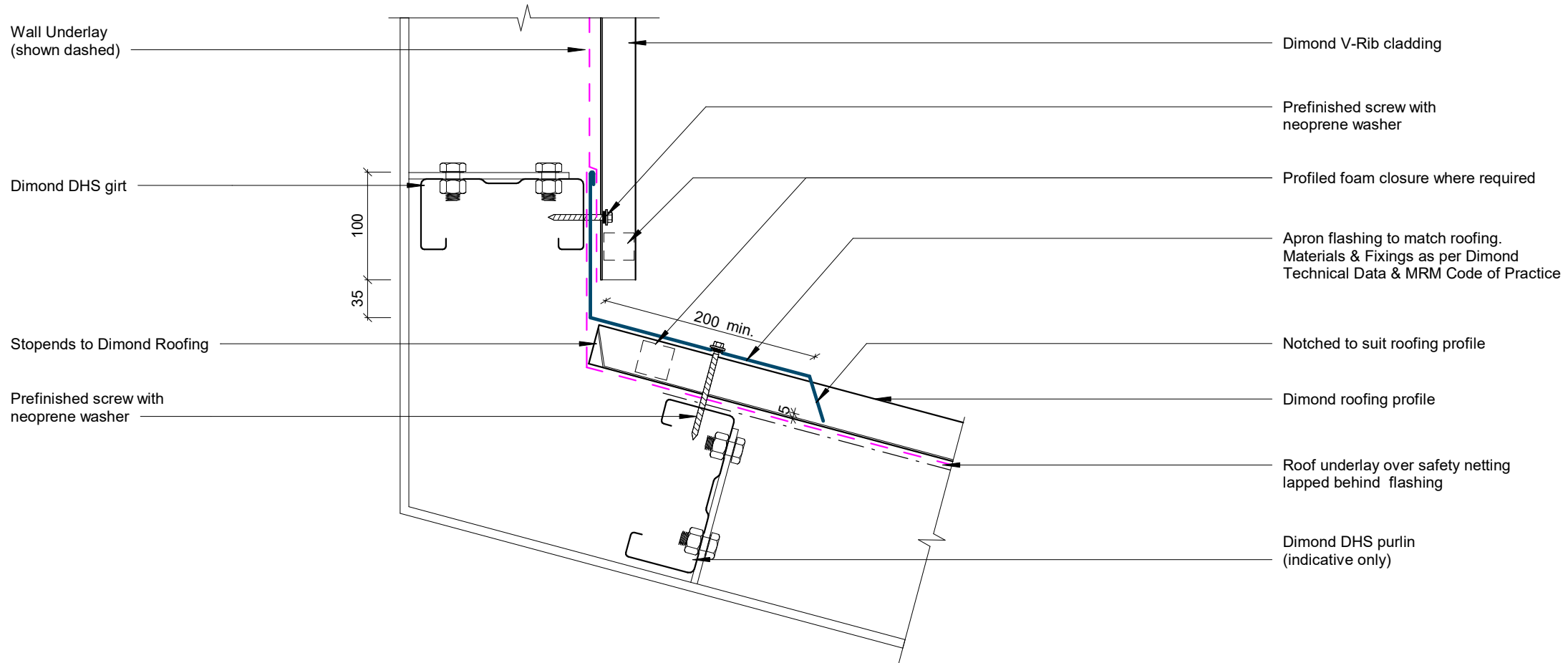
Dimond roofing profile

Roof underlay
over safety netting

Dimond DHS purlin
(indicative only)



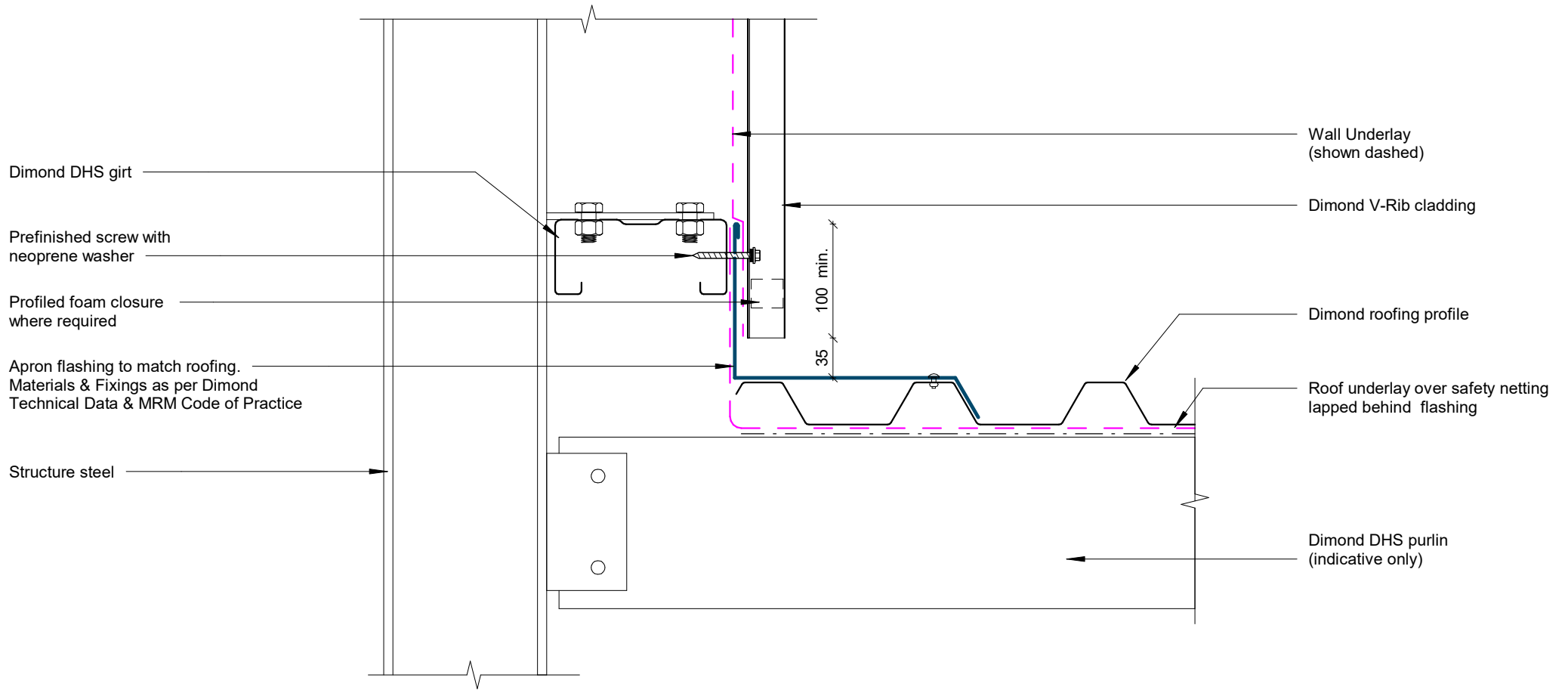
Barge Detail



Wall to Roof Transverse Detail

Rev: 1

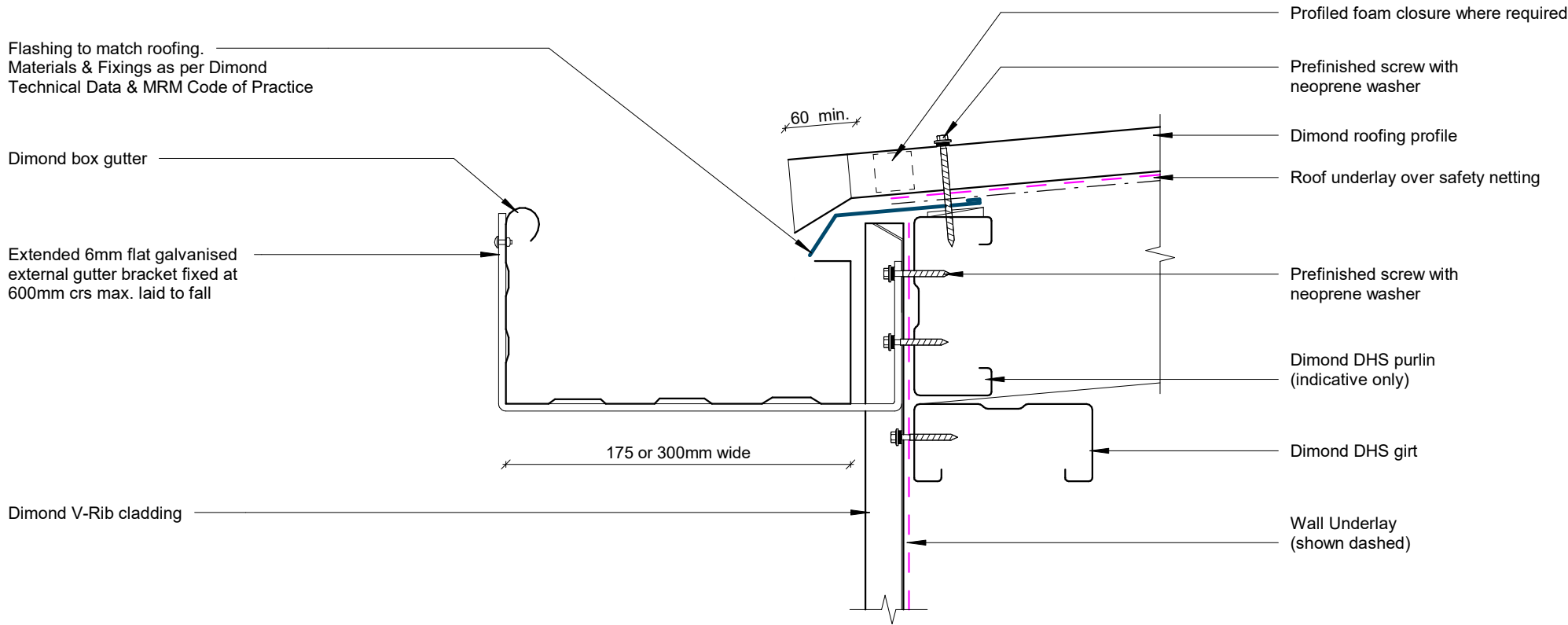
V Rib Commercial Vertical Cladding



Wall to Roof Detail

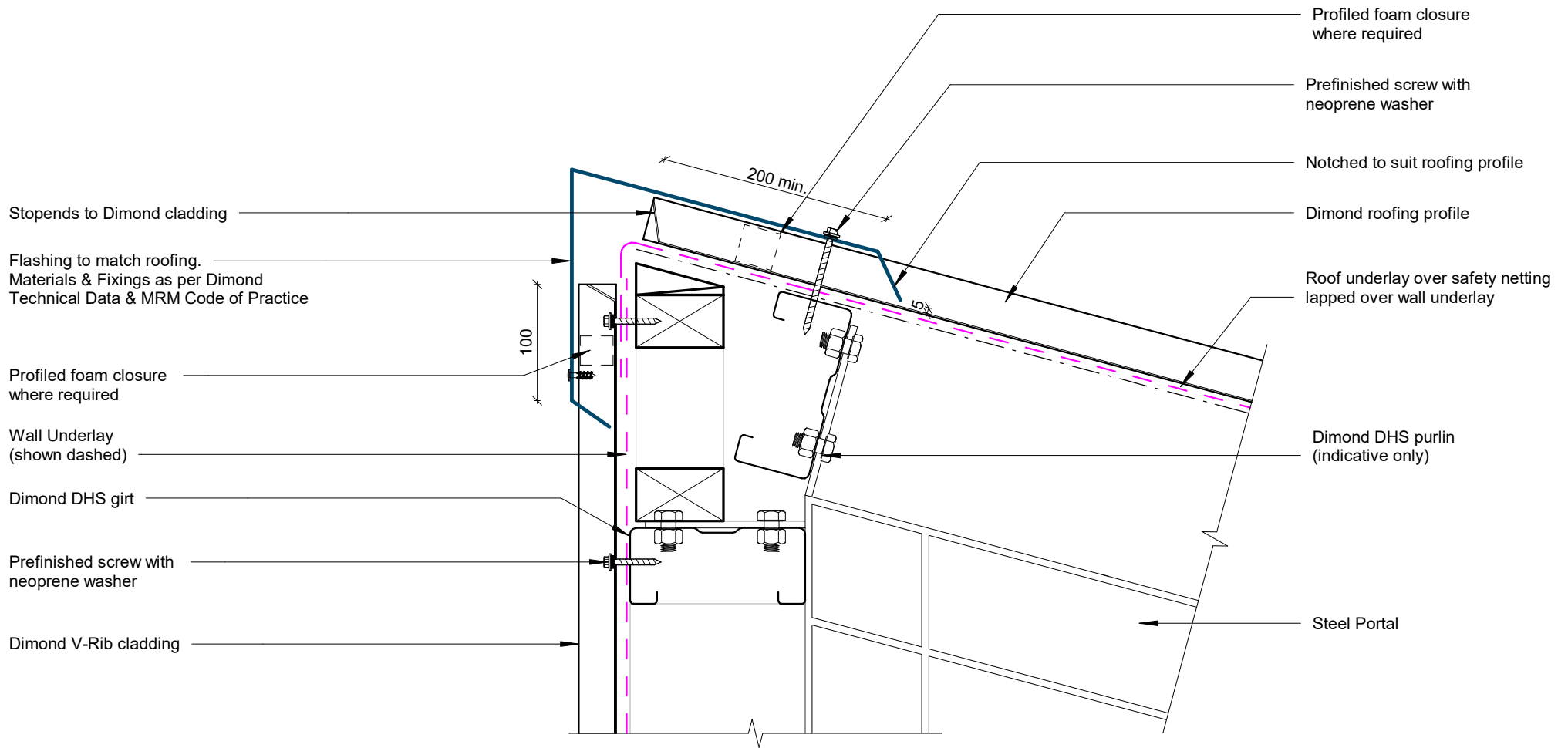
Rev: 1

V Rib Commercial Vertical Cladding



1

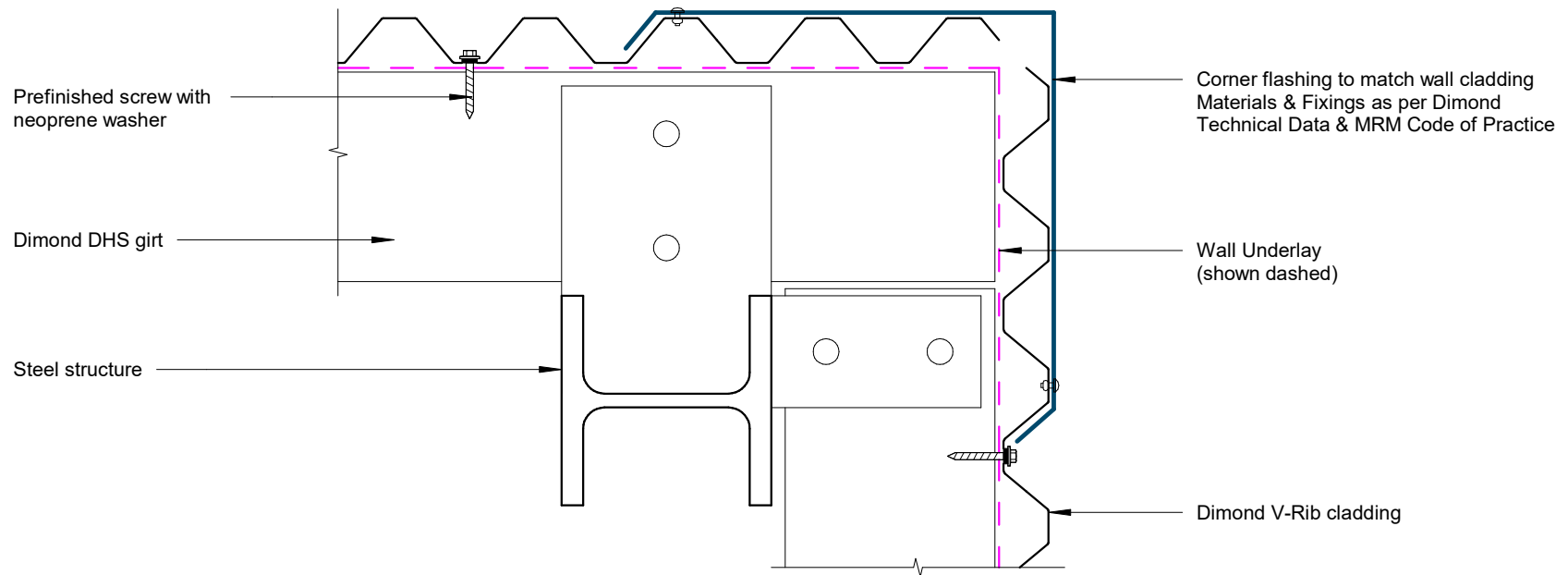
Box Gutter Detail



Wall to Roof Apex Detail

Rev: 1

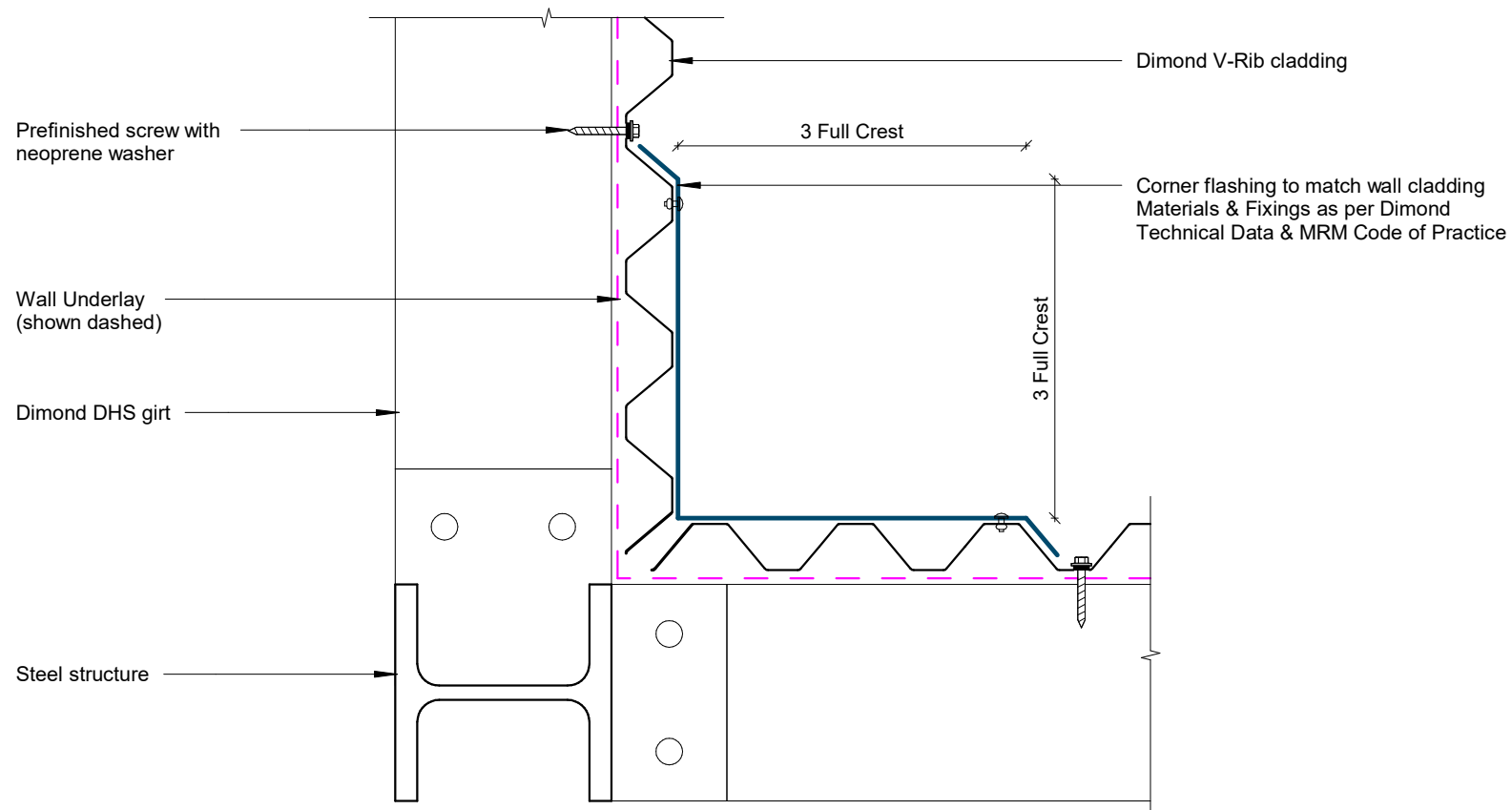
V Rib Commercial Vertical Cladding



External Corner Detail

Rev: 1

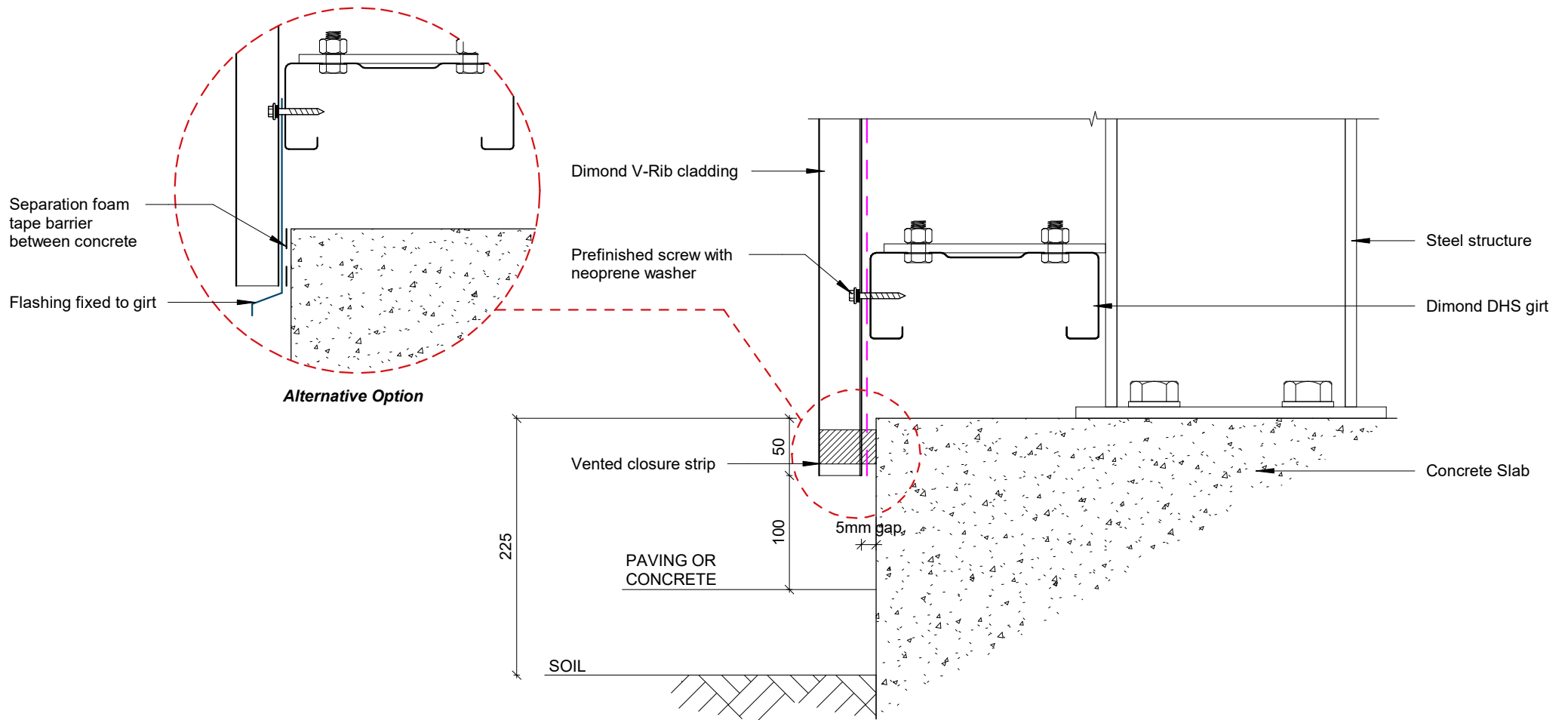
V Rib Commercial Vertical Cladding



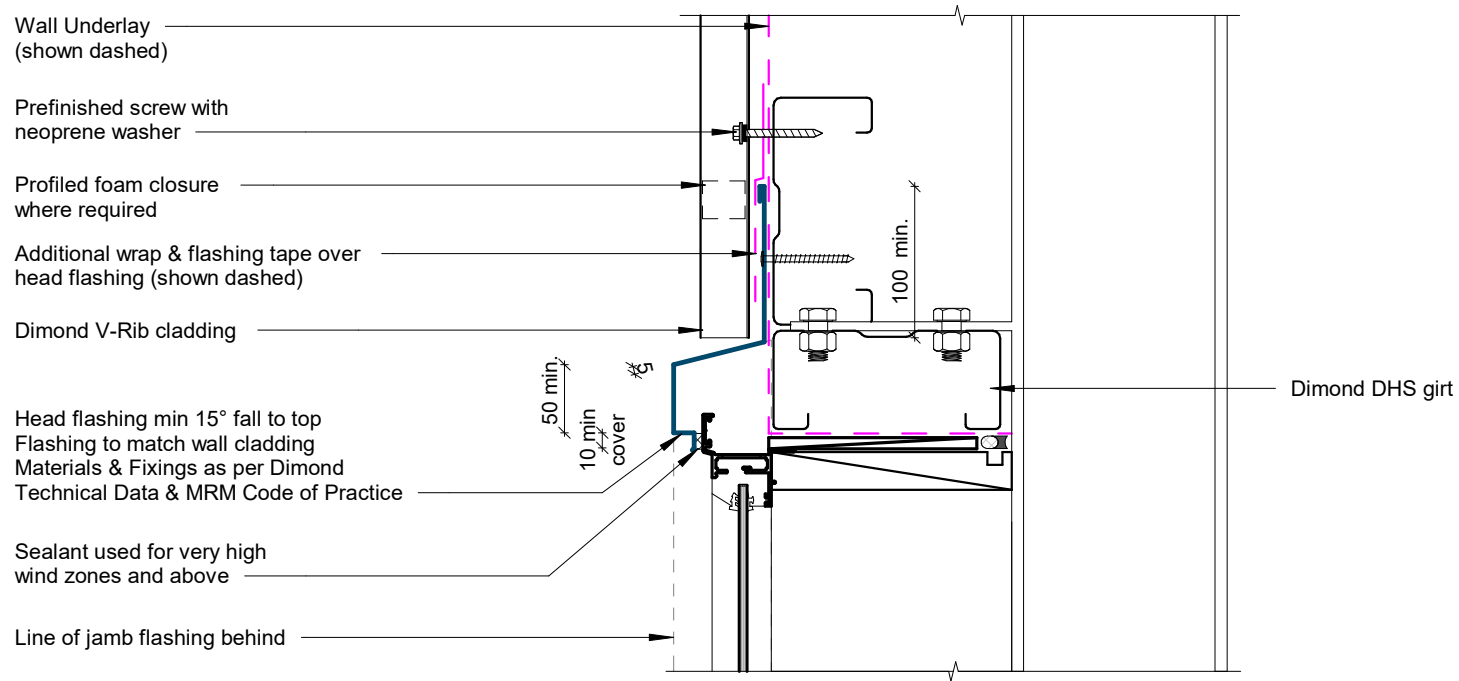
Internal Corner Detail

Rev: 1

V Rib Commercial Vertical Cladding



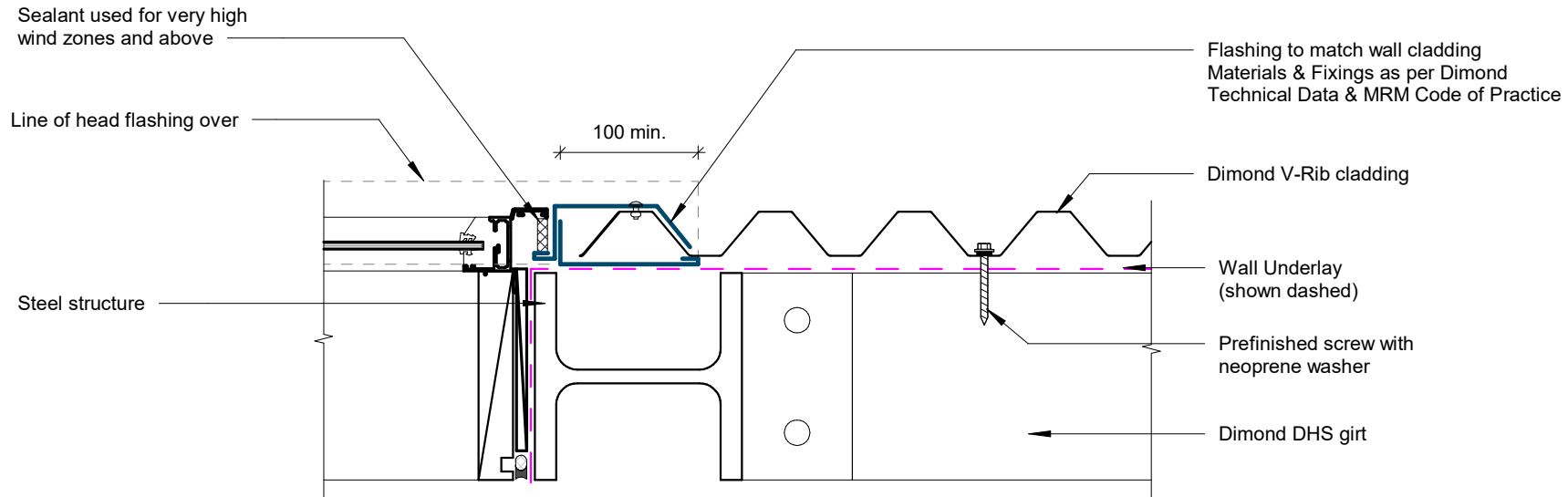
Base Detail



Window / Door Head Detail

Rev: 1

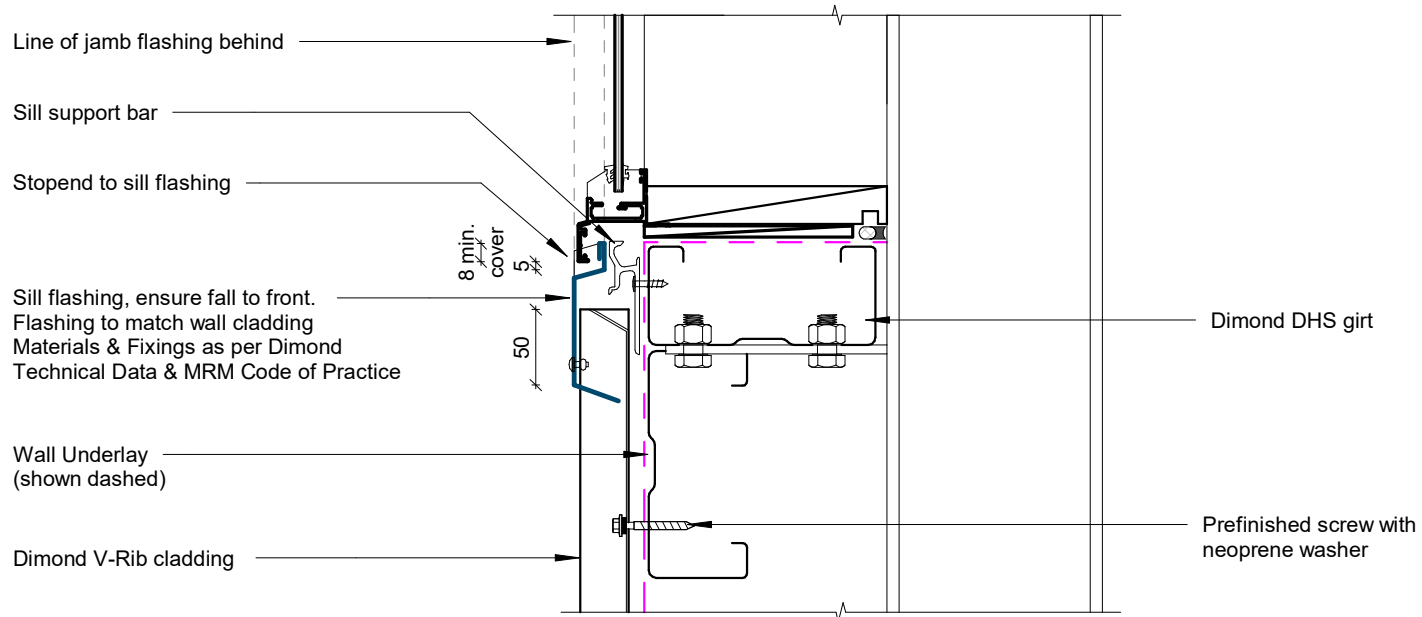
V Rib Commercial Vertical Cladding



Window / Door Jamb Detail

Rev: 1

V Rib Commercial Vertical Cladding



Window Sill Detail