

# V-RIB

## COMMERCIAL HORIZONTAL WALL CLADDING

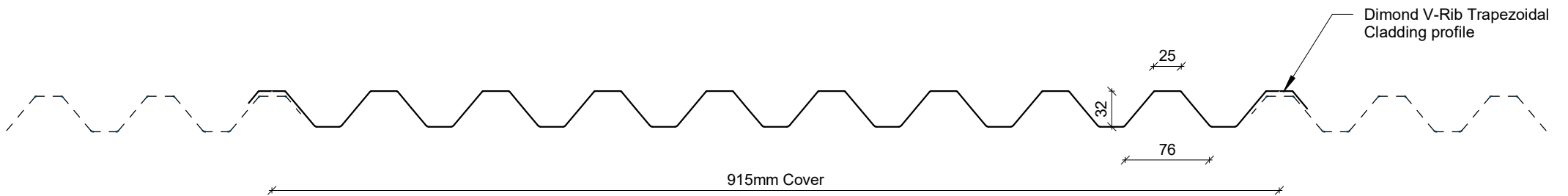
### DETAILS:

### REV:

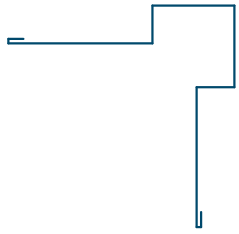
### DATE:

VRCHC00	Cover Sheet	1	Oct 2025
VRCHC01	Profile Summary	1	Oct 2025
VRCHC02	Typical Flashing Detail1	1	Oct 2025
VRCHC03	Barge Detail	1	Oct 2025
VRCHC04	Wall to Roof Transverse Detail	1	Oct 2025
VRCHC05	Wall to Roof Detail	1	Oct 2025
VRCHC06	Box Gutter Detail	1	Oct 2025
VRCHC07	Wall to Roof Apex Detail	1	Oct 2025
VRCHC08	External Corner Detail	1	Oct 2025
VRCHC09	Internal Corner Detail	1	Oct 2025
VRCHC10	Base Detail	1	Oct 2025
VRCHC11	Window / Door Head Detail	1	Oct 2025
VRCHC12	Window / Door Jamb Detail	1	Oct 2025
VRCHC13	Window Sill Detail	1	Oct 2025

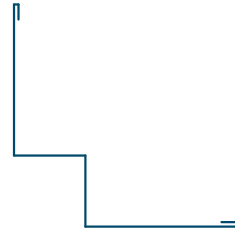
PROFILE OVERVIEW	
<b>RIB TYPE</b>	High
<b>RIBS PER SHEET</b>	10 Ribs per sheet
<b>WIDTH</b>	915mm Cover



## Profile Summary



External Corner Flashing



Internal Corner Flashing



Base Flashing



Window Sill Flashing



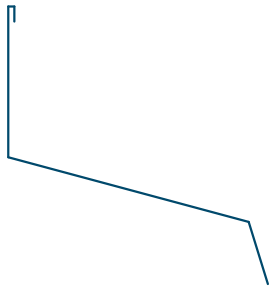
Window Head Flashing



Window Jamb Flashing



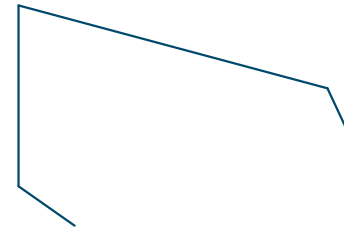
Eaves Flashing



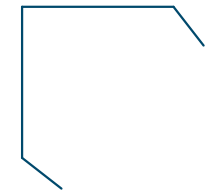
Wall to Roof Flashing 1



Wall to Roof Flashing 2



Wall Roof to Wall Apex Flashing



Barge Flashing

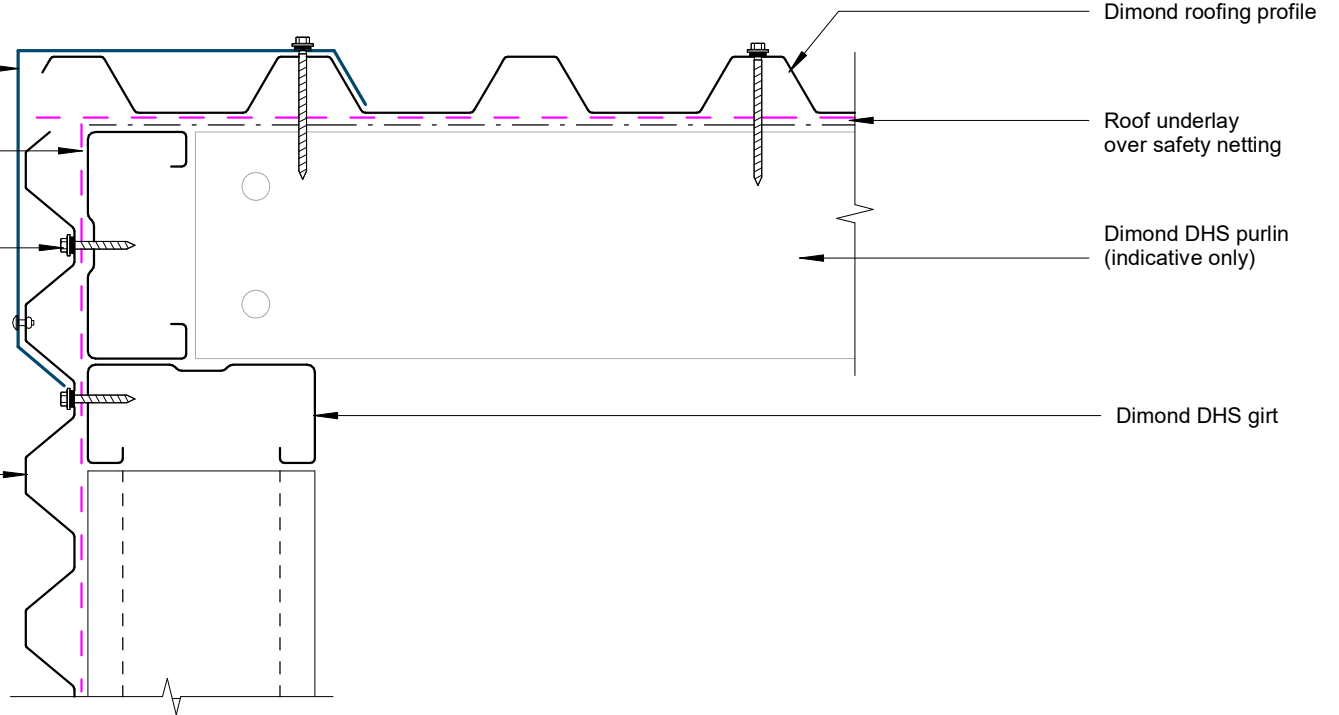
# Typical Flashing Detail1

Barge flashing to match roofing.  
Materials & Fixings as per Dimond  
Technical Data & MRM Code of Practice

Wall Underlay  
(shown dashed)

Prefinished screw with  
neoprene washer

Dimond V-Rib  
Trapezoidal cladding



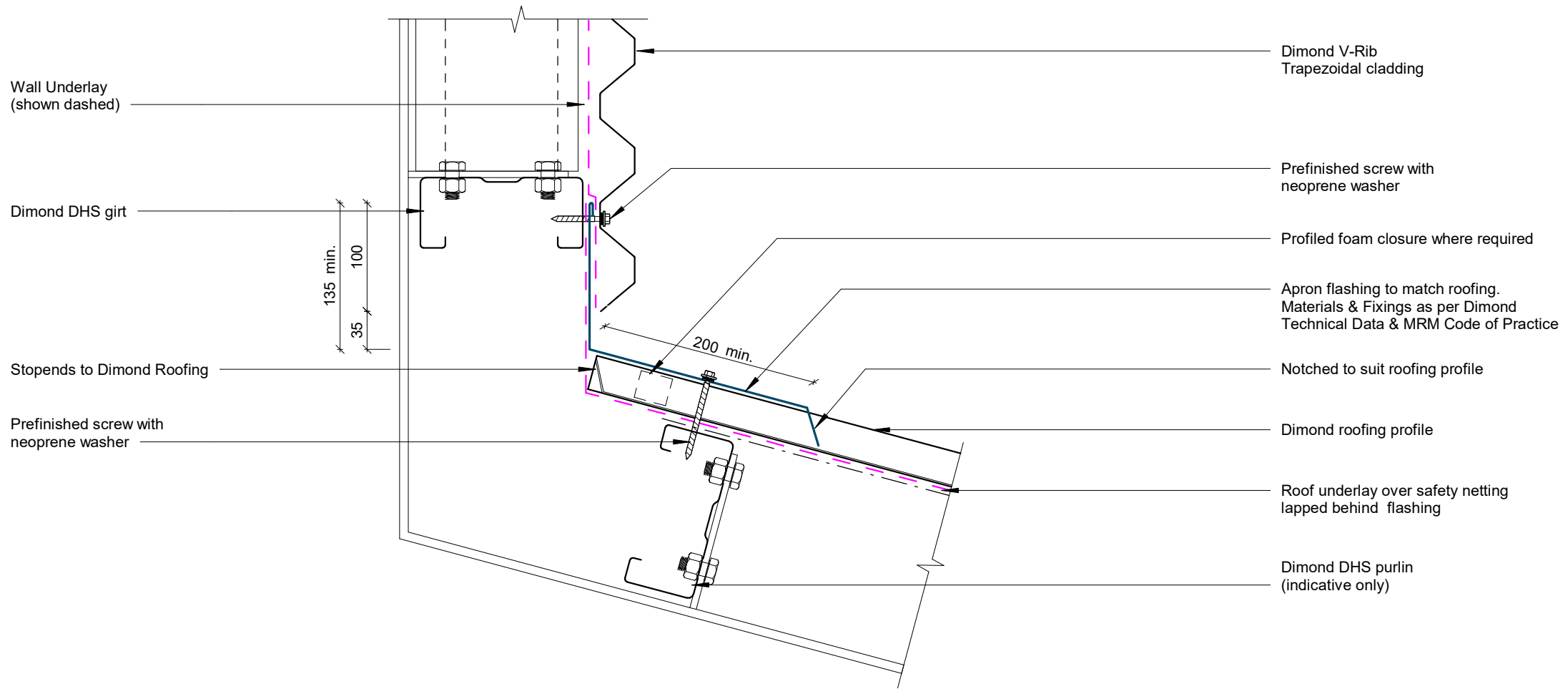
Dimond roofing profile

Roof underlay  
over safety netting

Dimond DHS purlin  
(indicative only)

Dimond DHS girt

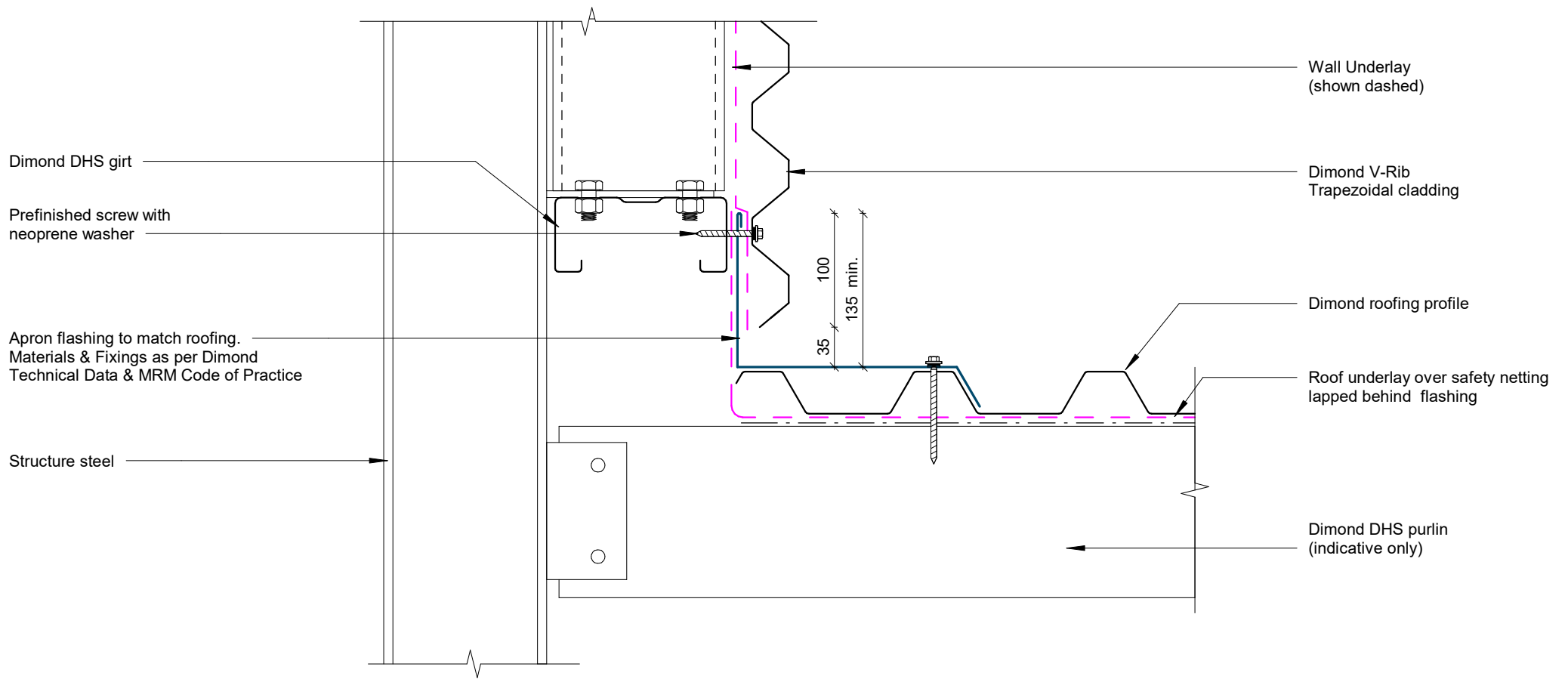
## Barge Detail



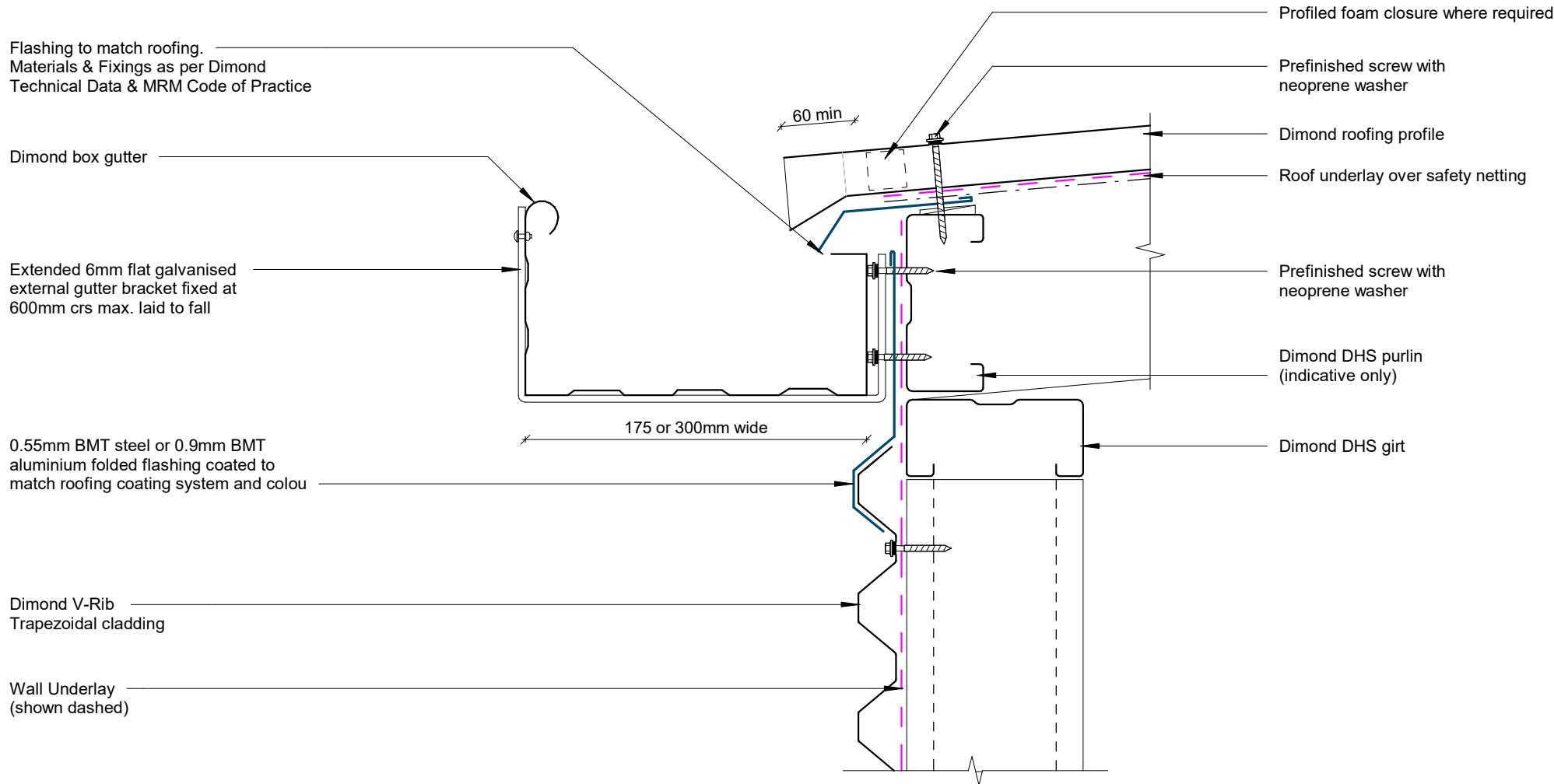
## Wall to Roof Transverse Detail

Rev: 1

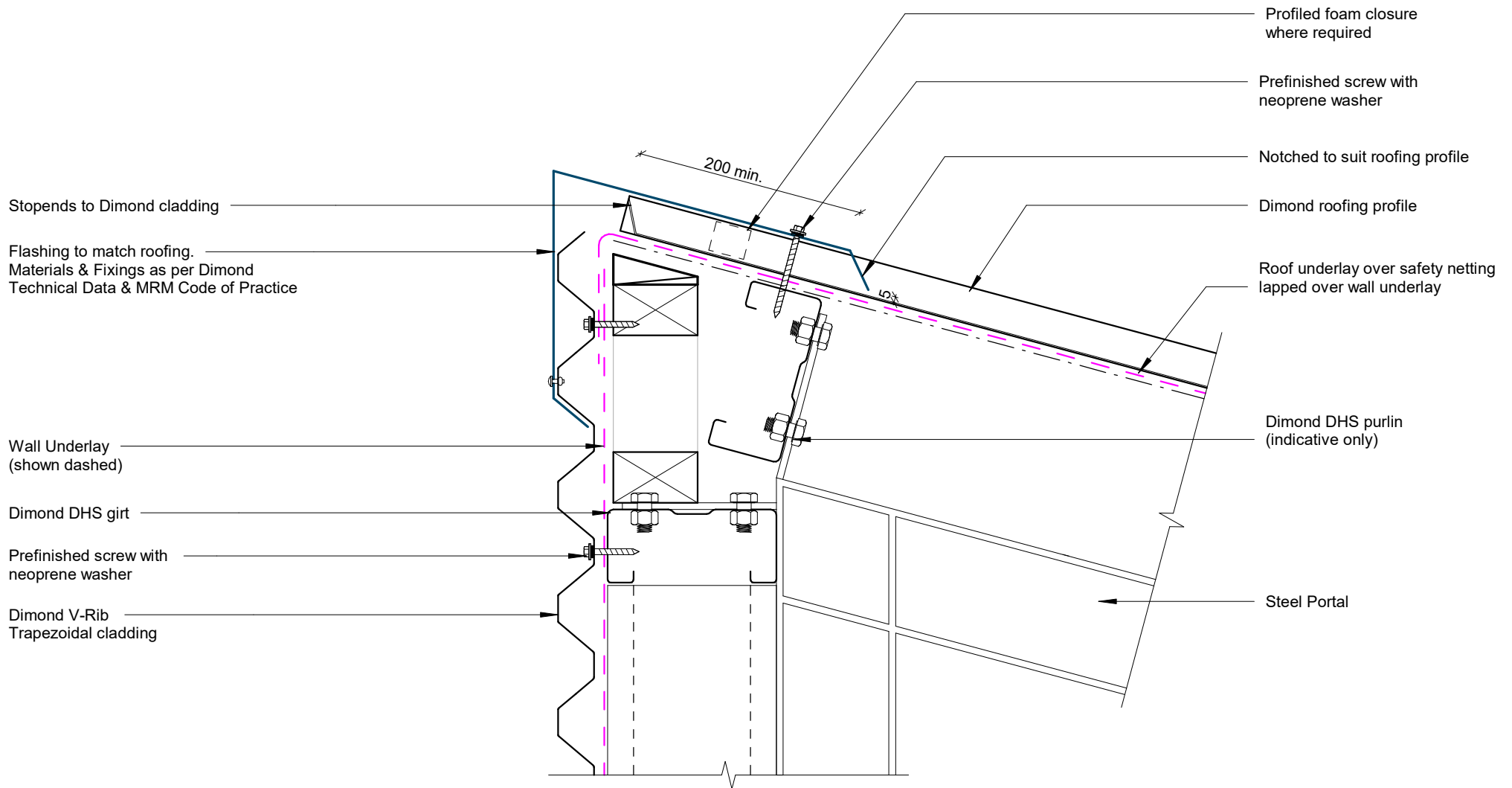
V-Rib Commercial Horizontal Cladding



# Wall to Roof Detail



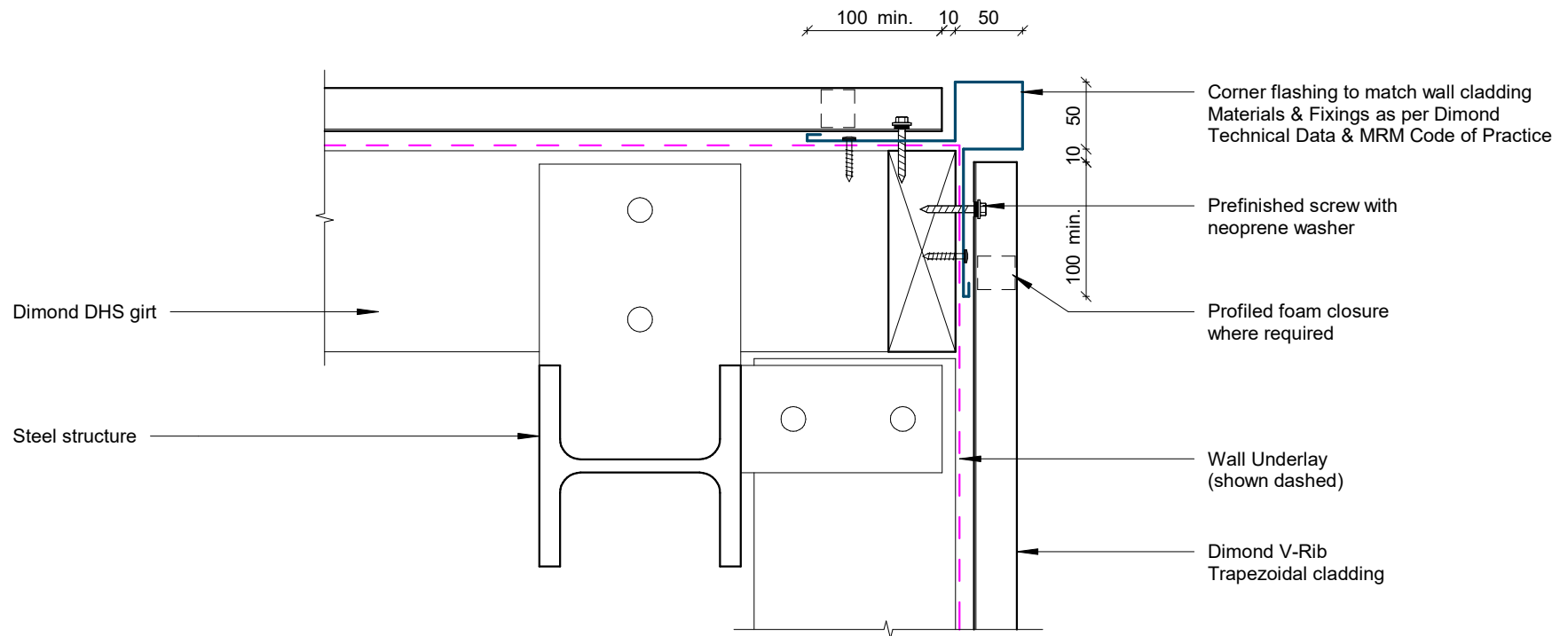
## Box Gutter Detail



## Wall to Roof Apex Detail

Rev: 1

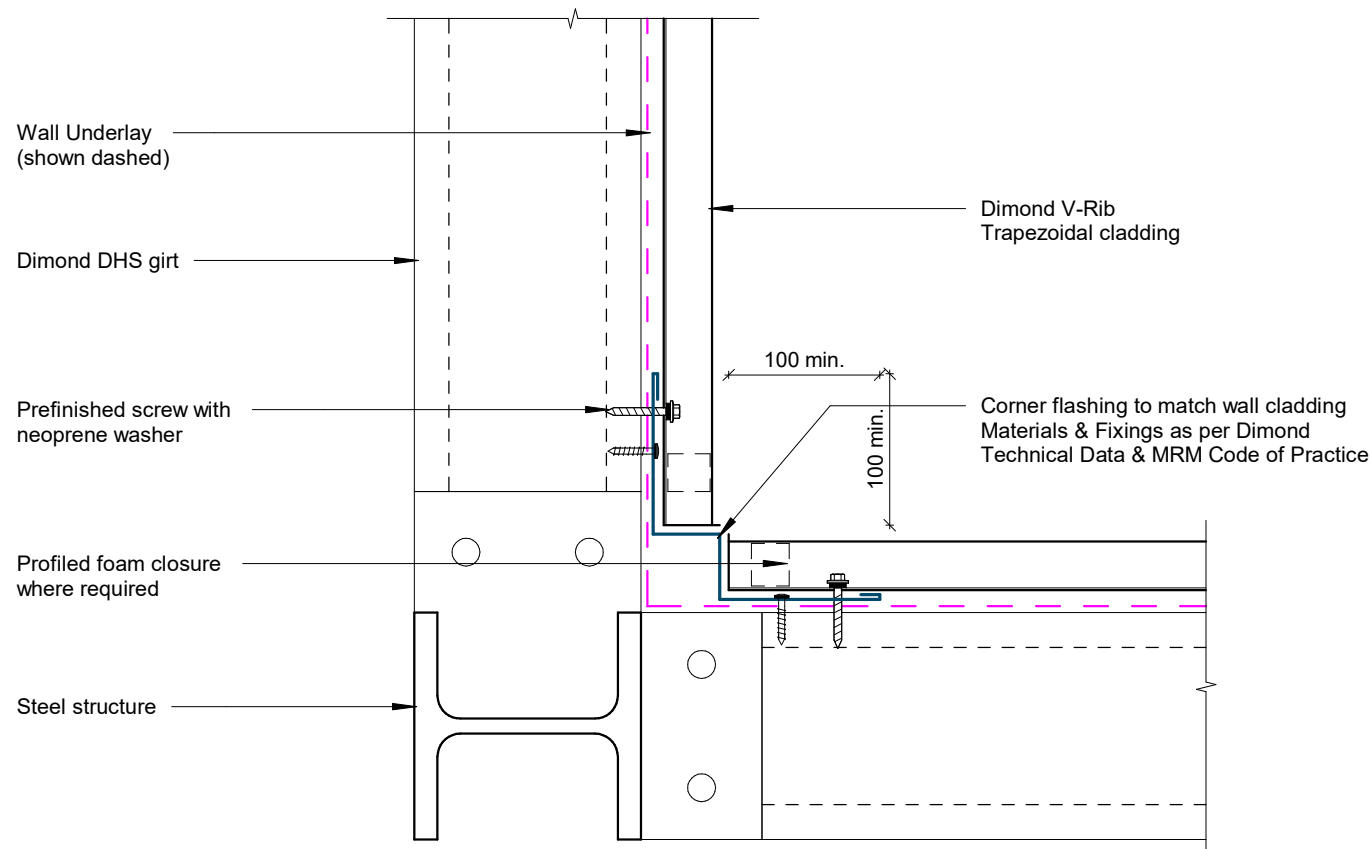
V-Rib Commercial Horizontal Cladding



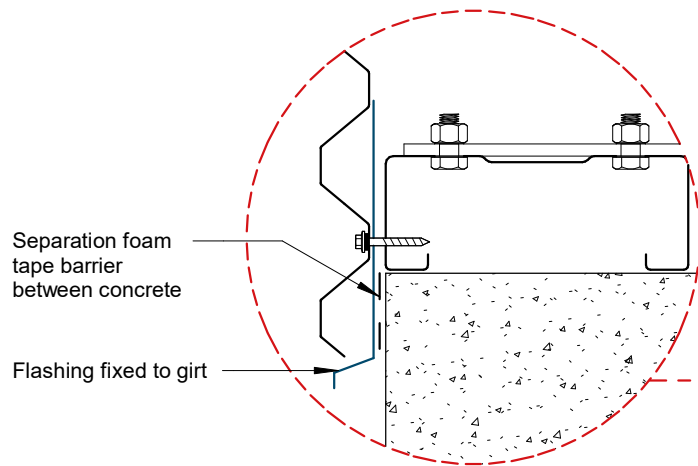
## External Corner Detail

Rev: 1

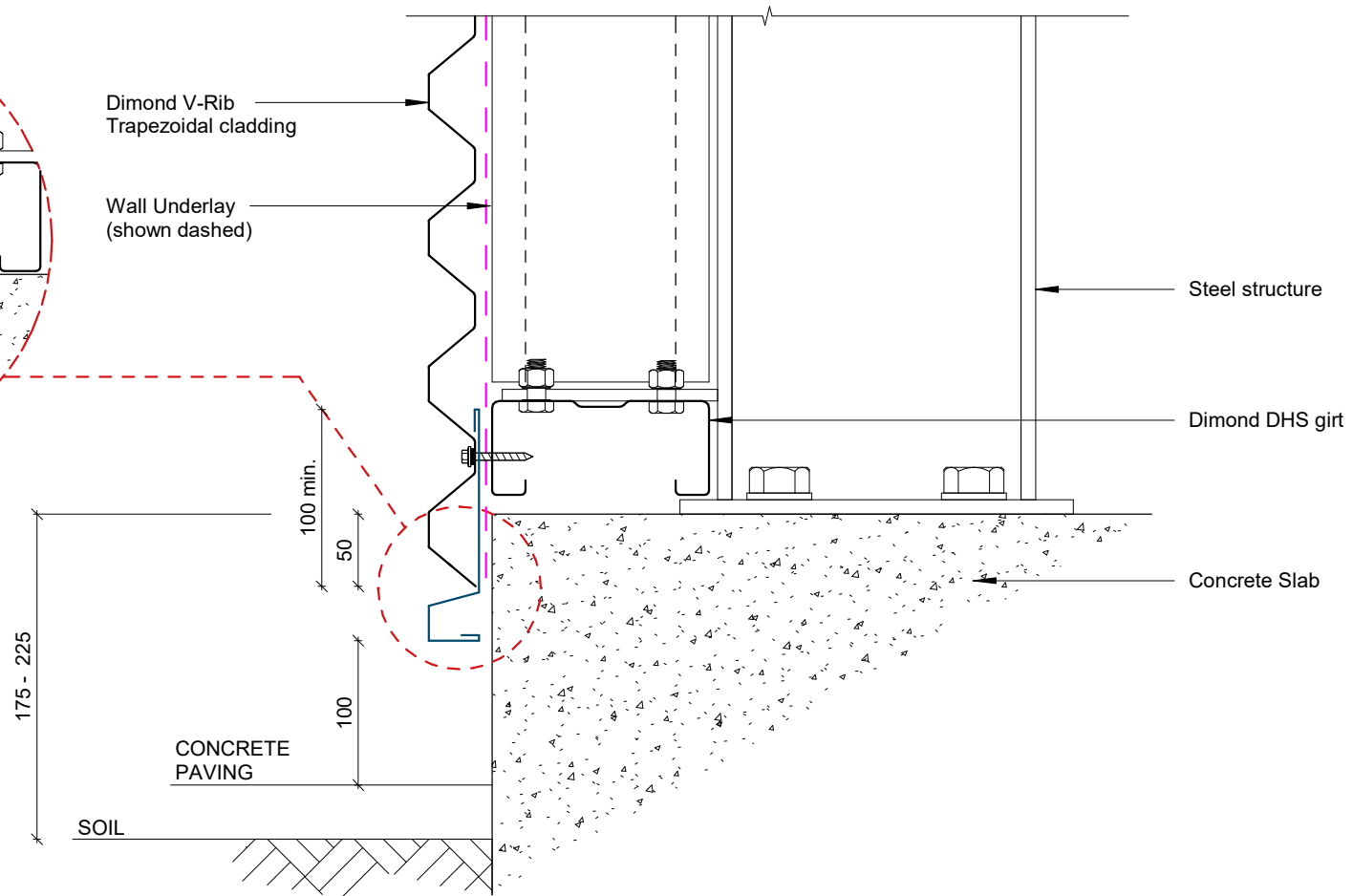
V-Rib Commercial Horizontal Cladding



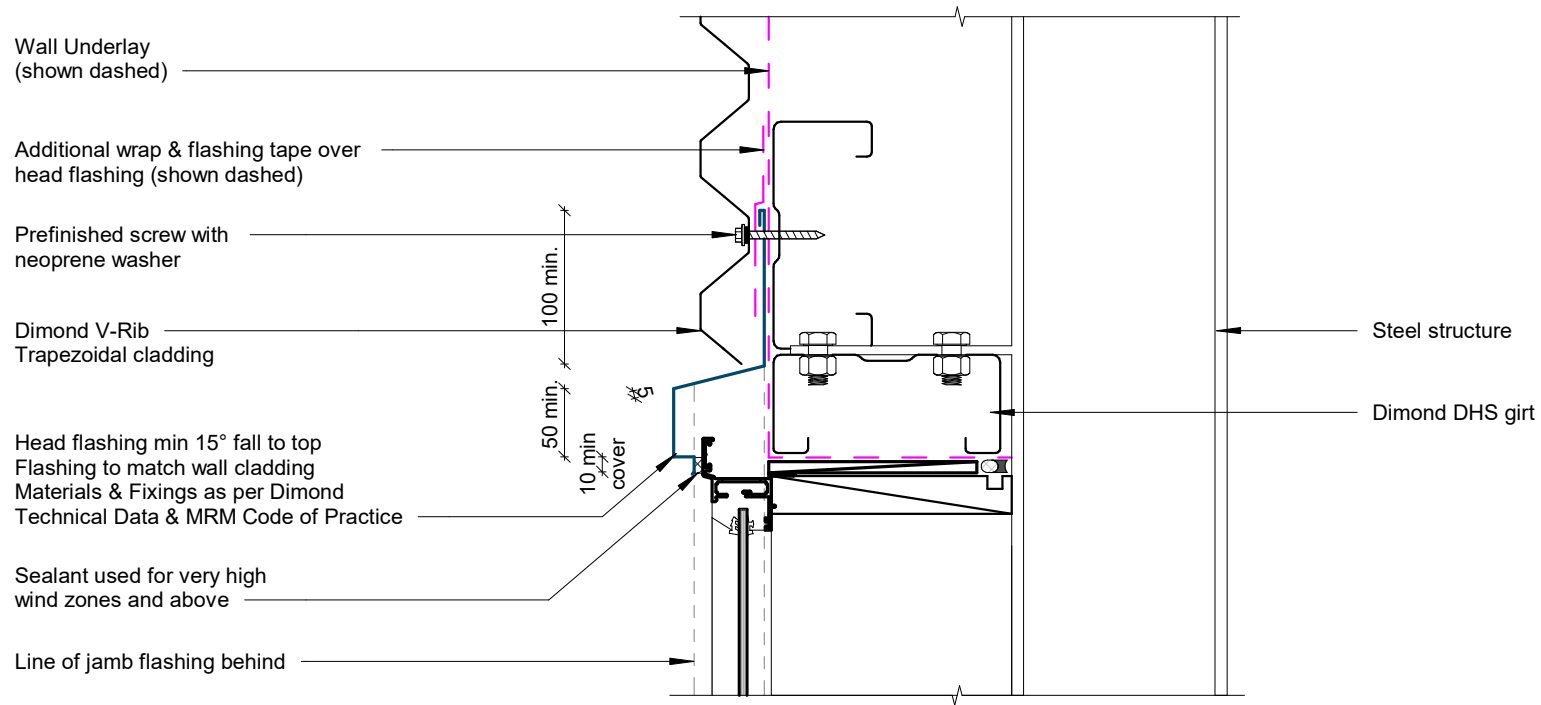
# Internal Corner Detail



**Alternative Option**



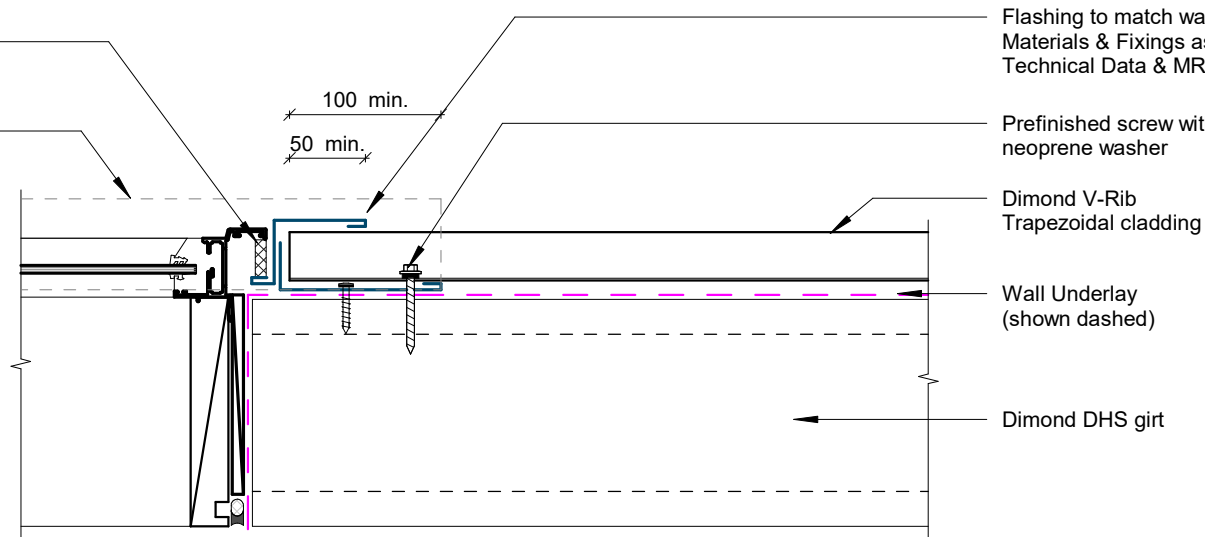
## Base Detail



## Window / Door Head Detail

Sealant used for very high  
wind zones and above

Line of head flashing over



Flashing to match wall cladding  
Materials & Fixings as per Dimond  
Technical Data & MRM Code of Practice

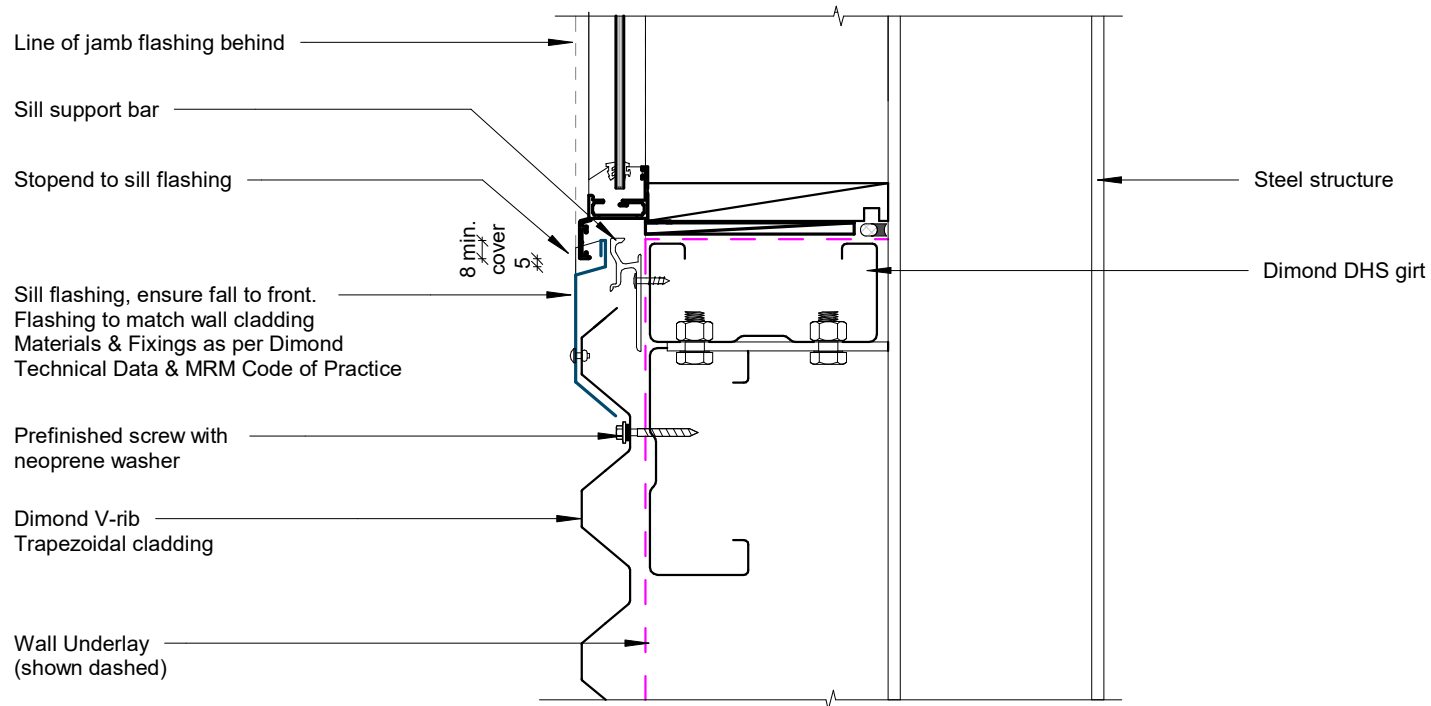
Prefinished screw with  
neoprene washer

Dimond V-Rib  
Trapezoidal cladding

Wall Underlay  
(shown dashed)

Dimond DHS girt

## Window / Door Jamb Detail



## Window Sill Detail