

TOPSPAN

COMMERCIAL VERTICAL WALL CLADDING

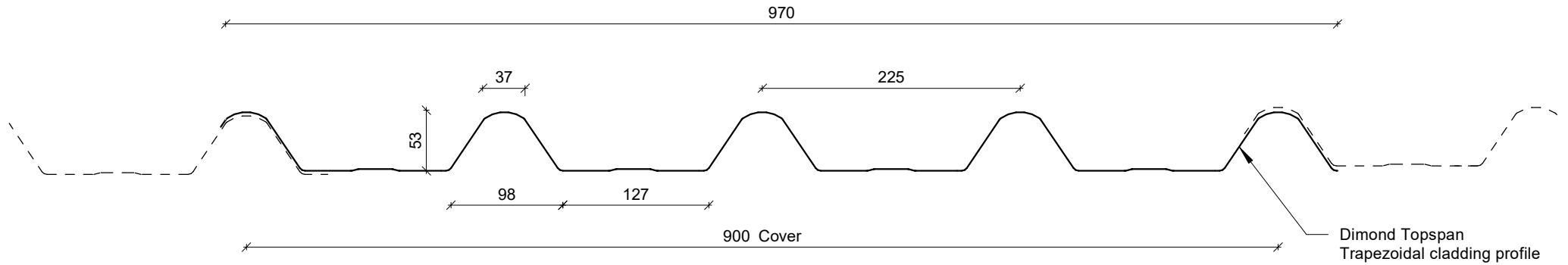
DETAILS:

REV:

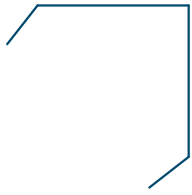
DATE:

TSCVC00	Cover Sheet	1	Oct 2025
TSCVC01	Profile Summary	1	Oct 2025
TSCVC02	Typical Flashing Detail	1	Oct 2025
TSCVC03	Barge Detail	1	Oct 2025
TSCVC04	Wall to Roof Transverse Detail	1	Oct 2025
TSCVC05	Wall to Roof Detail	1	Oct 2025
TSCVC06	Box Gutter Detail	1	Oct 2025
TSCVC07	Wall to Roof Apex Detail	1	Oct 2025
TSCVC08	External Corner Detail	1	Oct 2025
TSCVC09	Internal Corner Detail	1	Oct 2025
TSCVC10	Base Detail	1	Oct 2025
TSCVC11	Window / Door Head Detail	1	Oct 2025
TSCVC12	Window / Door Jamb Detail	1	Oct 2025
TSCVC13	Window Sill Detail	1	Oct 2025

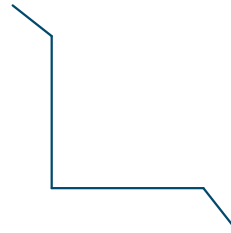
PROFILE OVERVIEW	
RIB TYPE	High
RIBS PER SHEET	5 Ribs per sheet
WIDTH	900mm Cover, 970mm Sheet



Profile Summary



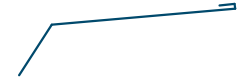
**External Corner /
Barge Flashing**



Internal Corner Flashing



Base Flashing



Eaves Flashing



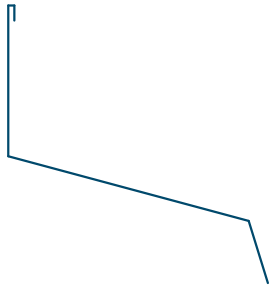
Window Sill Flashing



Window Head Flashing



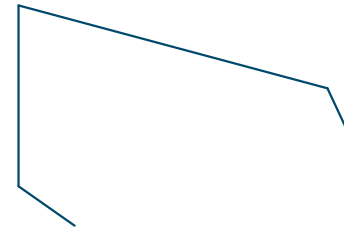
Window Jamb Flashing



Wall to Roof Flashing 1



Wall to Roof Flashing 2



Wall Roof to Wall Apex Flashing

Typical Flashing Detail

Barge flashing to match roofing.
Materials & Fixings as per Dimond
Technical Data & MRM Code of Practice

Profiled foam closure
where required

100 min

Prefinished screw with
neoprene washer

Dimond DHS girt

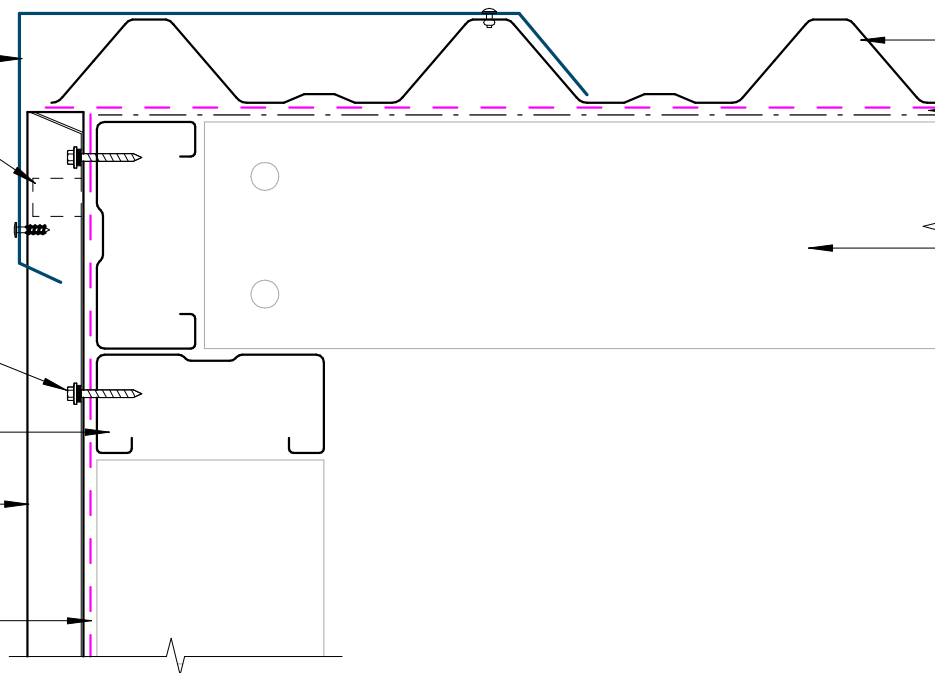
Dimond Topspan
Trapezoidal cladding

Wall Underlay
(shown dashed)

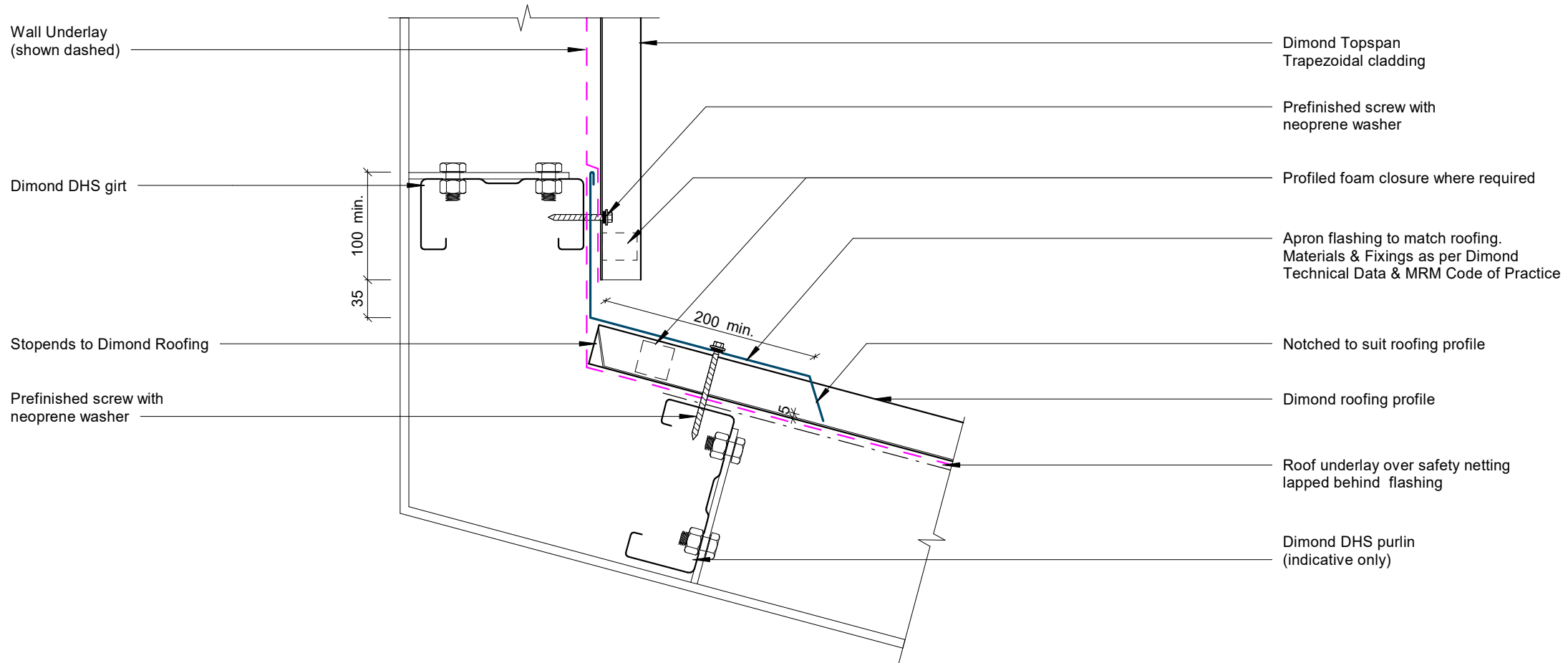
Dimond roofing profile

Roof underlay
over safety netting

Dimond DHS purlin
(indicative only)



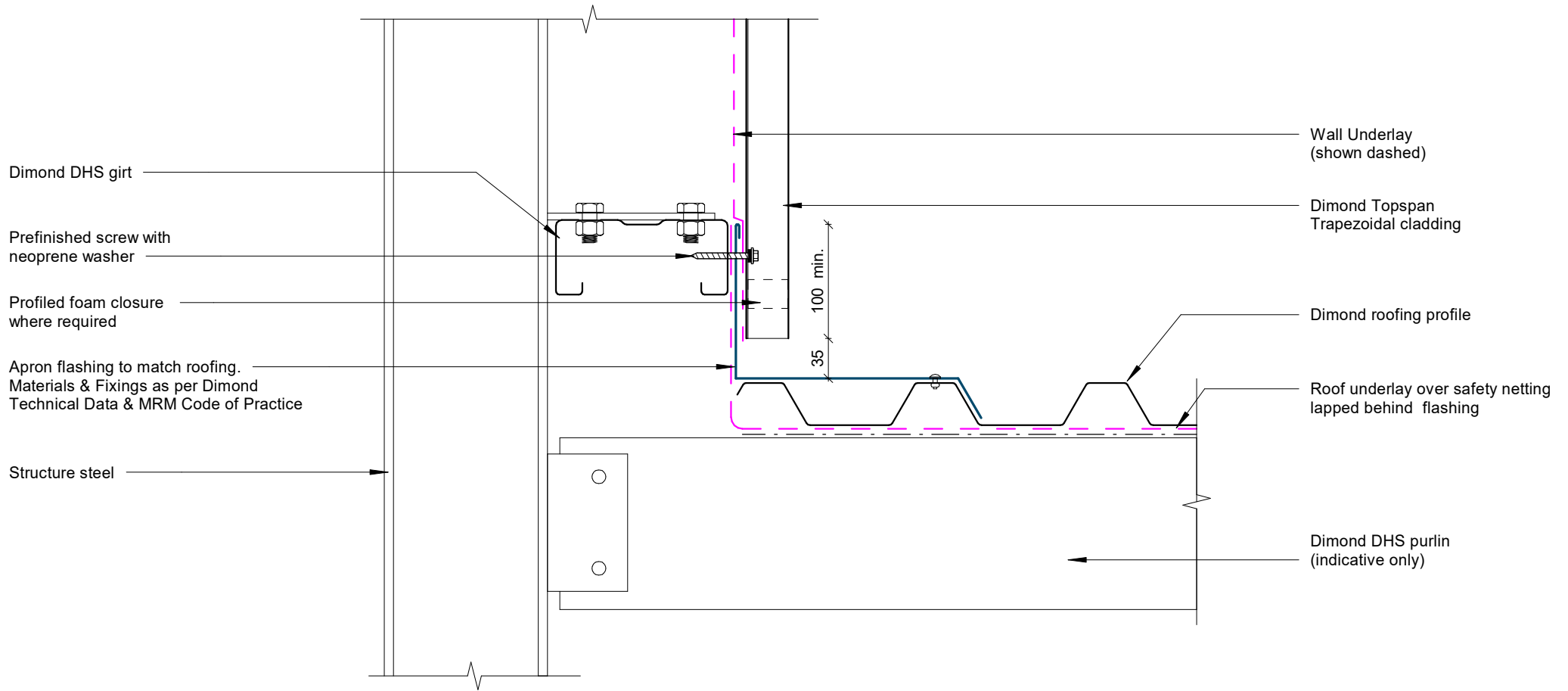
Barge Detail



Wall to Roof Transverse Detail

Rev: 1

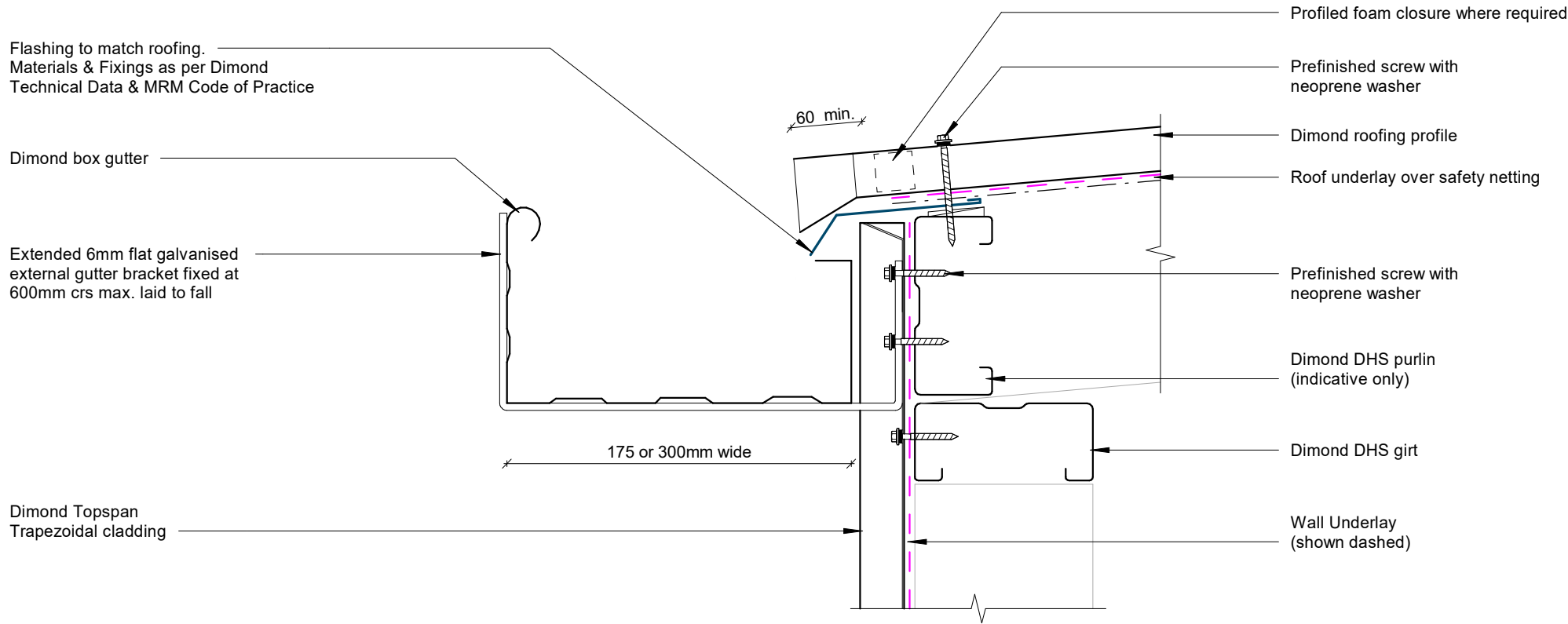
Topspan Commercial Vertical Cladding



Wall to Roof Detail

Rev: 1

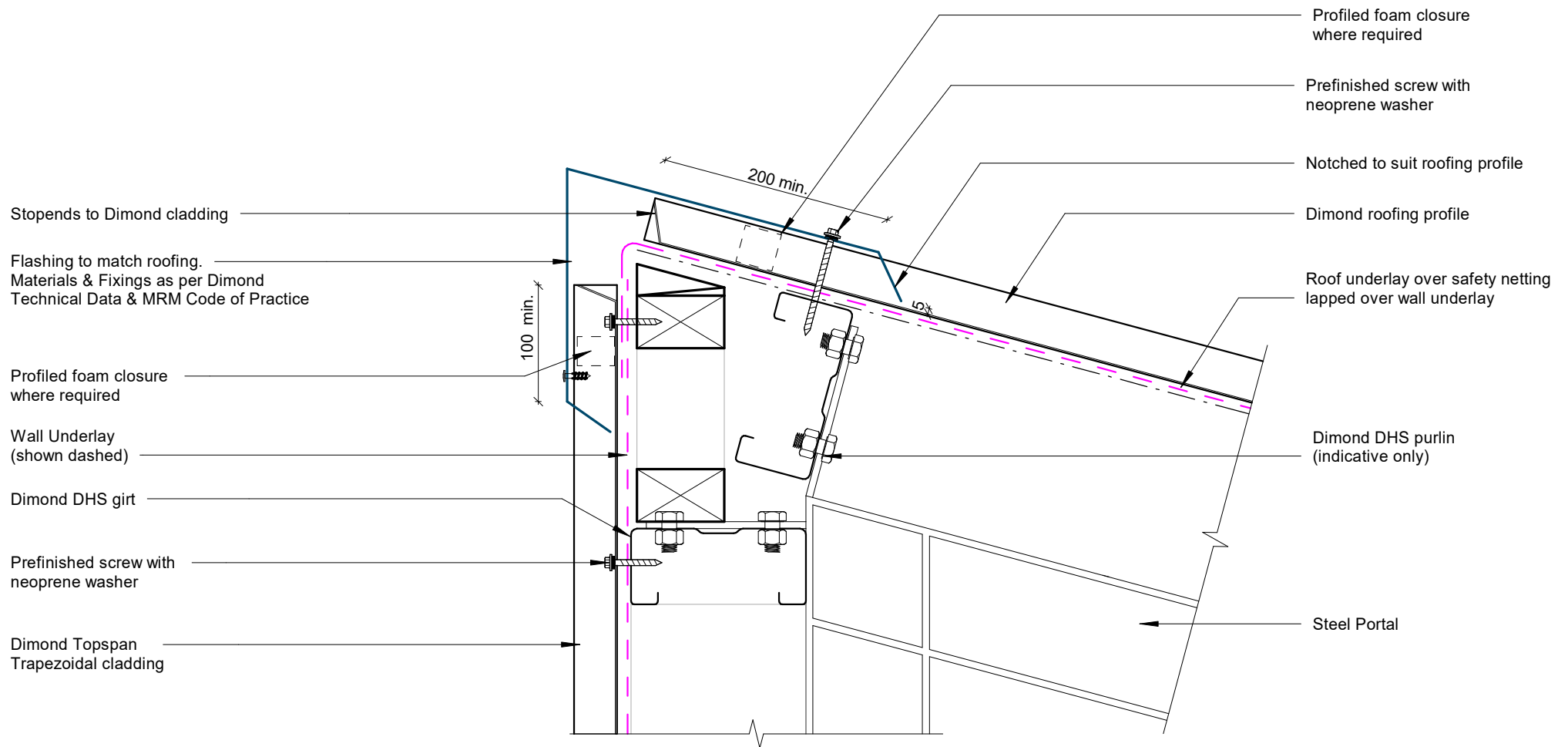
Topspan Commercial Vertical Cladding



Box Gutter Detail

Rev: 1

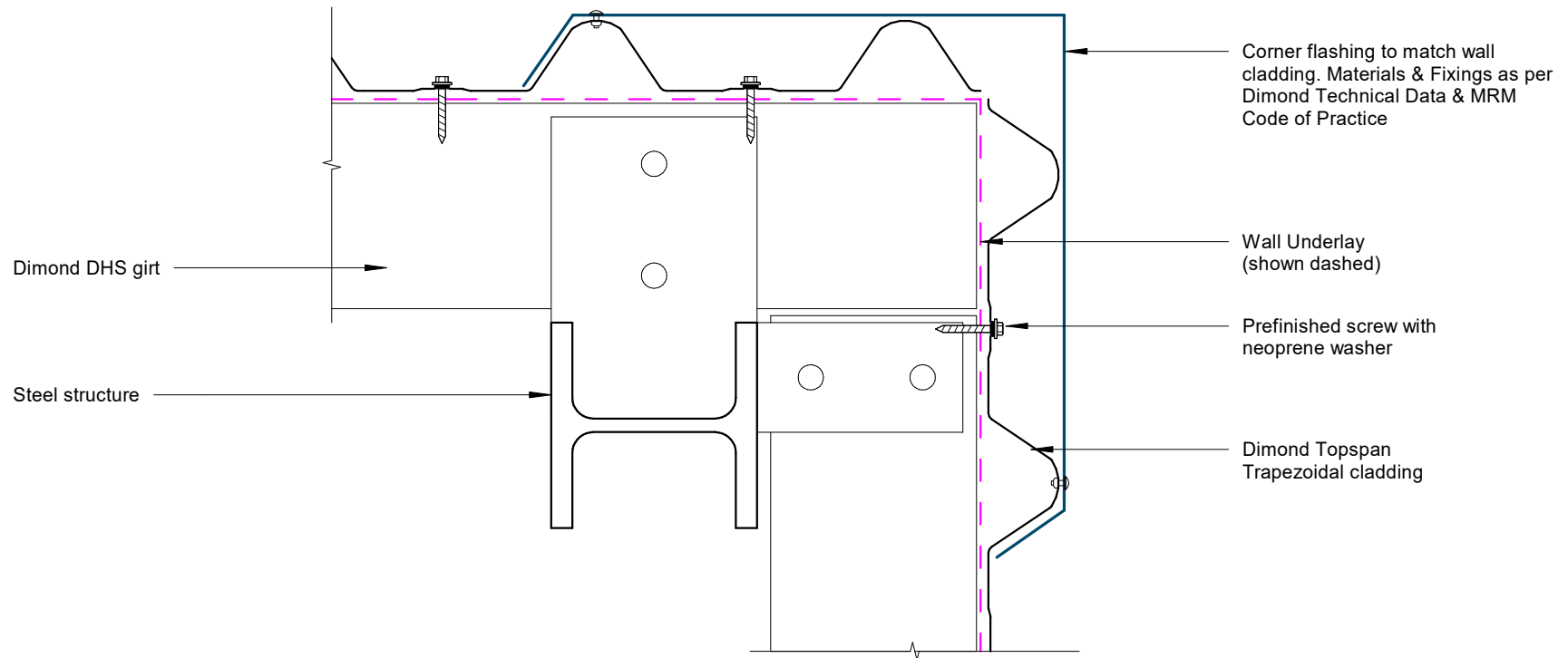
Topspan Commercial Vertical Cladding



Wall to Roof Apex Detail

Rev: 1

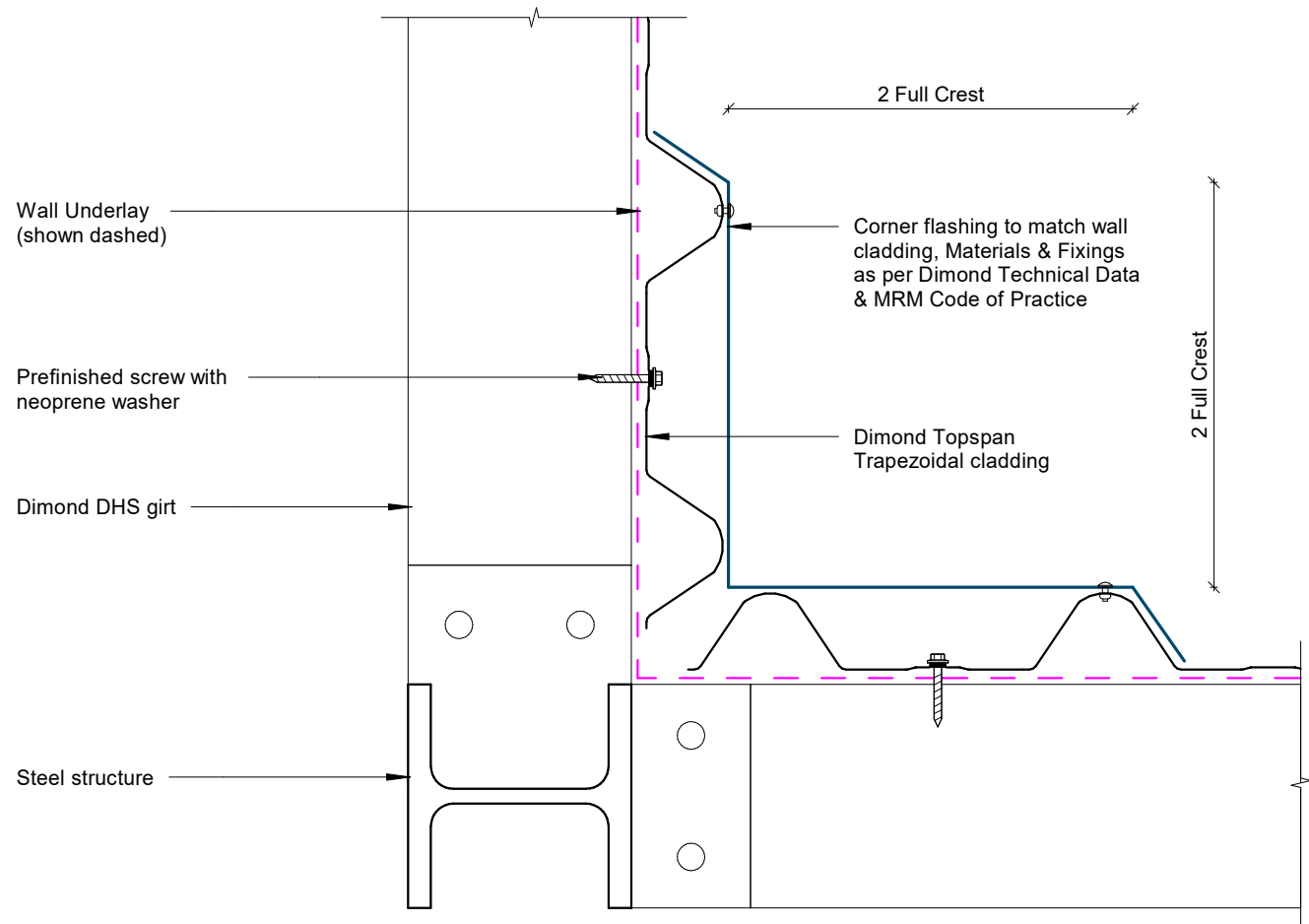
Topspan Commercial Vertical Cladding



External Corner Detail

Rev: 1

Topspan Commercial Vertical Cladding



Internal Corner Detail

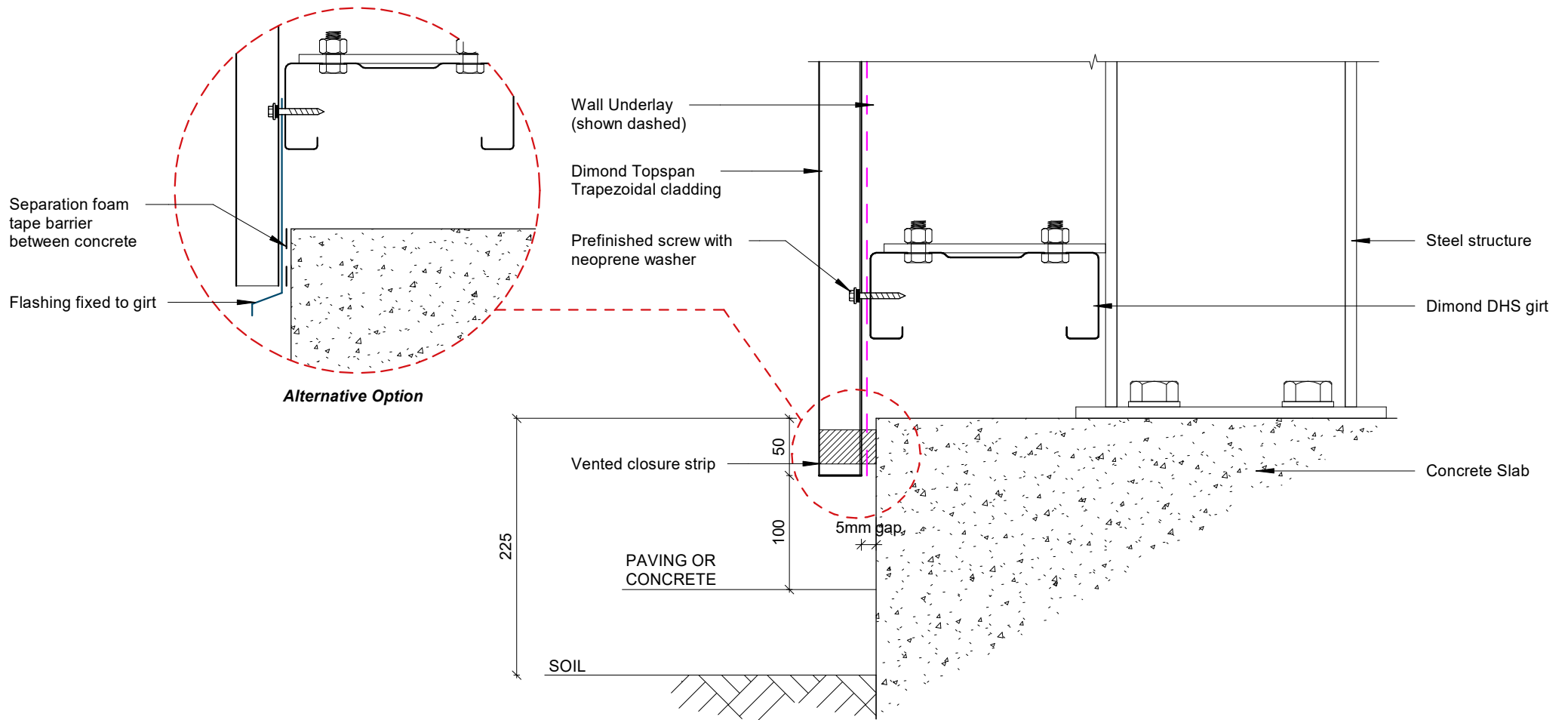
Topspan Commercial Vertical Cladding

Rev: 1

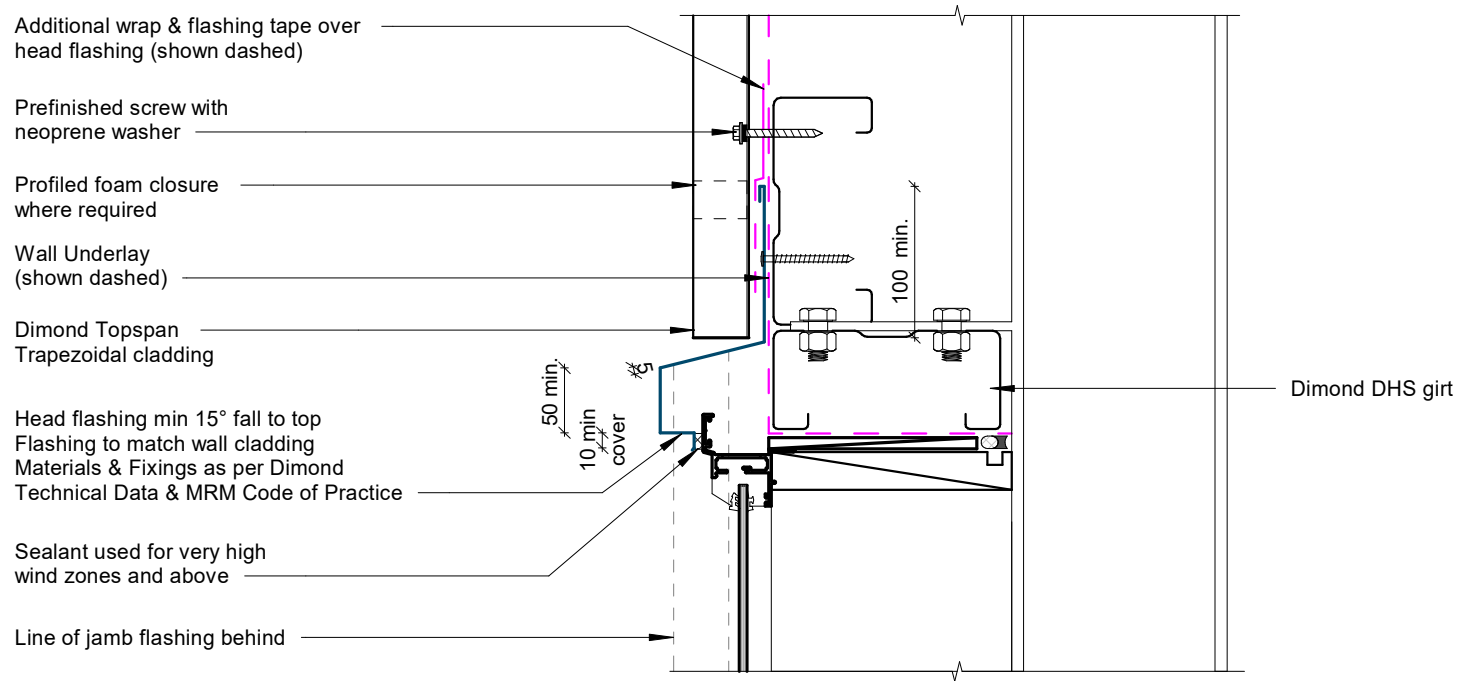


©Dimond 2023, all rights reserved. The information and specifications contained in this document are proprietary to Dimond and may not be used other than for the purpose of designing or building a roof or roofing system solely using products supplied or approved by Dimond ("Permitted Purpose"). You may copy this document solely for the Permitted Purpose, but may not otherwise copy, publish, distribute or modify this document without Dimond's prior written consent. Dimond will not be liable for any use of this document or information and specifications contained in this document, other than for the Permitted Purpose

Date: Oct 2025 Scale: 1 : 5 Sheet: TSCVC09



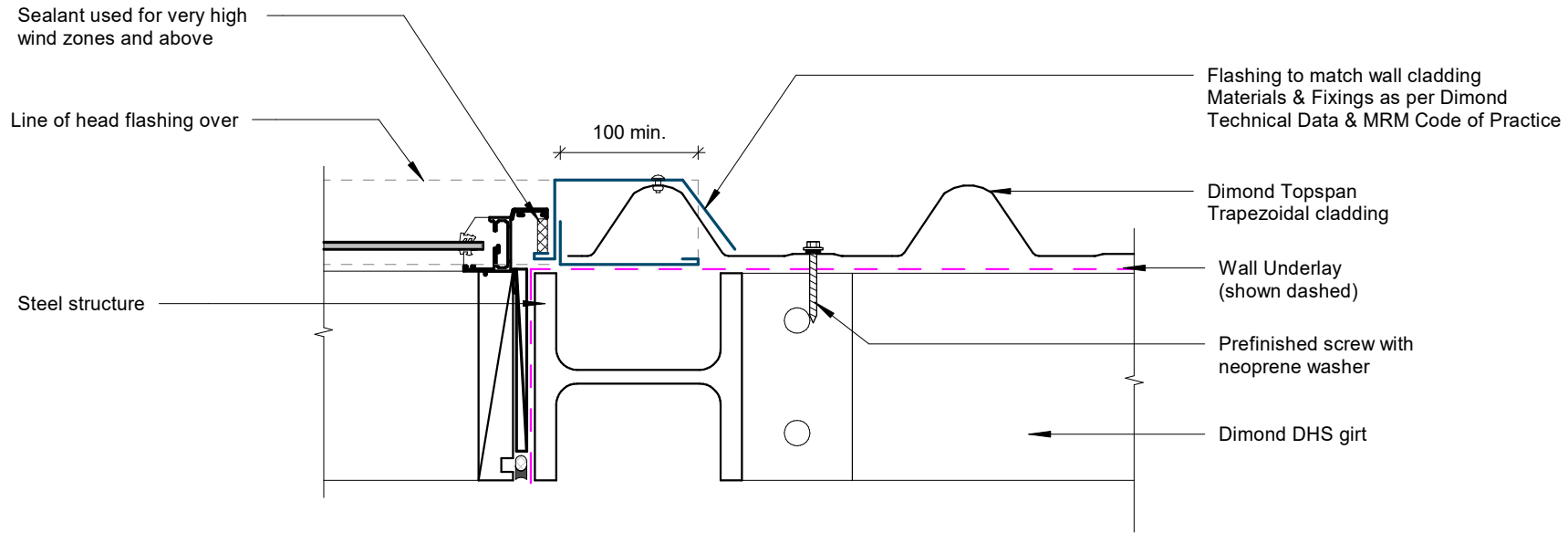
Base Detail



Window / Door Head Detail

Rev: 1

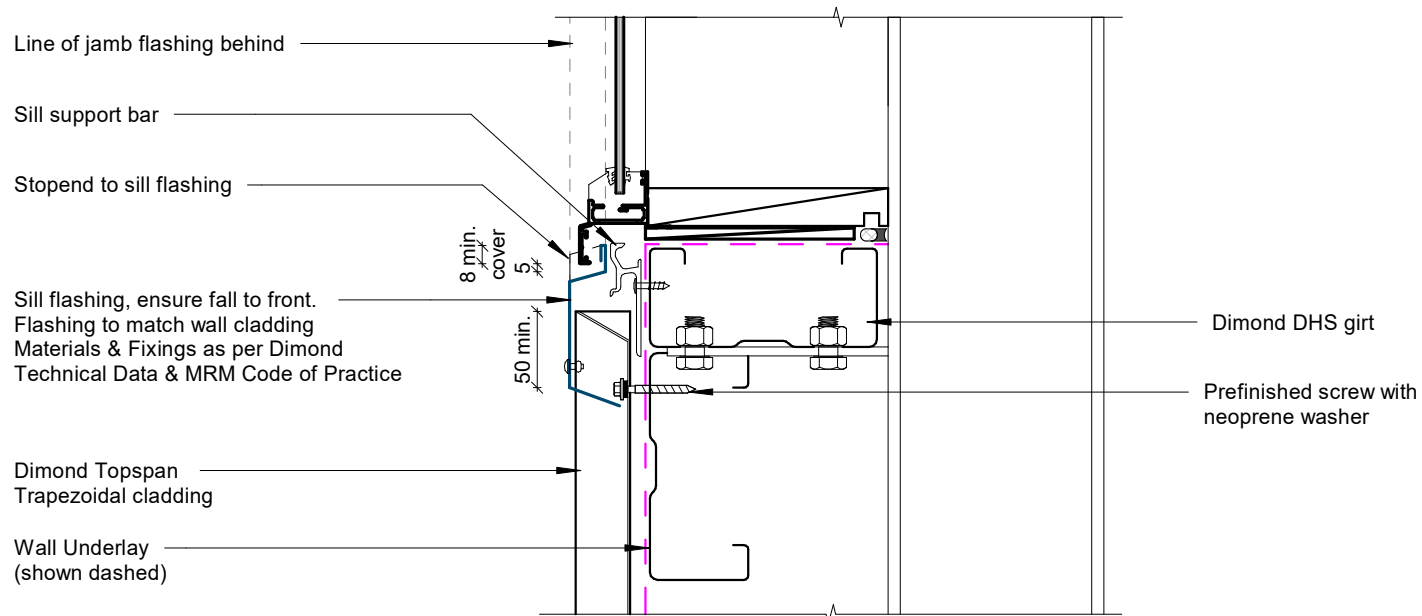
Topspan Commercial Vertical Cladding



Window / Door Jamb Detail

Rev: 1

Topspan Commercial Vertical Cladding



Window Sill Detail

Rev: 1

Topspan Commercial Vertical Cladding