

STYLELINE

RESIDENTIAL VERTICAL WALL CLADDING

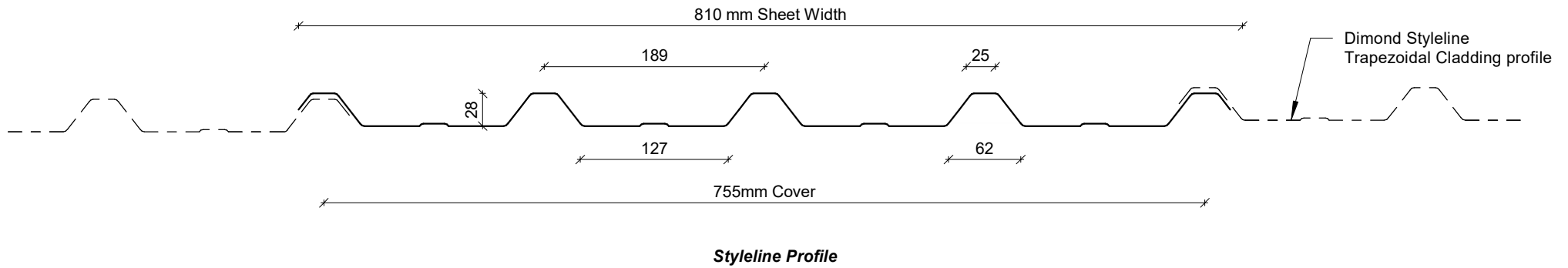
DETAILS:

REV:

DATE:

SRVC00	Cover Sheet	1	Jun 2025
SRVC01	Profile Summary	1	Jun 2025
SRVC02	Typical Flashing Detail	1	Jun 2025
SRVC03	Barge Flashing Detail	1	Jun 2025
SRVC04	Transverse Junction Detail	1	Jun 2025
SRVC05	External Corner Detail	1	Jun 2025
SRVC06	Internal Corner Detail	1	Jun 2025
SRVC07	Base Detail	1	Jun 2025
SRVC08	Soffit Detail	1	Jun 2025
SRVC09	Window Head Detail	1	Jun 2025
SRVC10	Window Jamb Detail	1	Jun 2025
SRVC11	Window Sill Detail	1	Jun 2025
SRVC12	Meterbox Head Detail	1	Jun 2025
SRVC13	Meterbox Jamb Detail	1	Jun 2025
SRVC14	Meterbox Sill Detail	1	Jun 2025
SRVC15	Pipe Penetration Detail	1	Jun 2025
SRVC16	Cladding to Concrete Junction Detail	1	Jun 2025
SRVC17	Cladding to Brick Junction Detail	1	Jun 2025
SRVC18	Cladding to Panel Junction Detail	1	Jun 2025
SRVC19	3D Window Flashing Detail	1	Jun 2025

PROFILE OVERVIEW	
MINIMUM PITCH	3°
RIB TYPE	Low
RIBS PER SHEET	5 Ribs per sheet
WIDTH	755mm Cover, 810mm Sheet



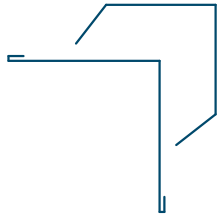
Profile Summary

Rev: 1 **Styleline Residential Vertical Cladding**

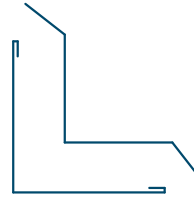


©Dimond 2023, all rights reserved. The information and specifications contained in this document are proprietary to Dimond and may not be used other than for the purpose of designing or building a roof or roofing system solely using products supplied or approved by Dimond ("Permitted Purpose"). You may copy this document solely for the Permitted Purpose, but may not otherwise copy, publish, distribute or modify this document without Dimond's prior written consent. Dimond will not be liable for any use of this document or information and specifications contained in this document, other than for the Permitted Purpose

Date: Jun 2025 Scale: 1 : 5 Sheet: **SRVC01**



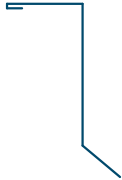
External Corner Flashing



Internal Corner Flashing



Base Flashing



Soffit Flashing



Window Head Flashing



Window Jamb Flashing

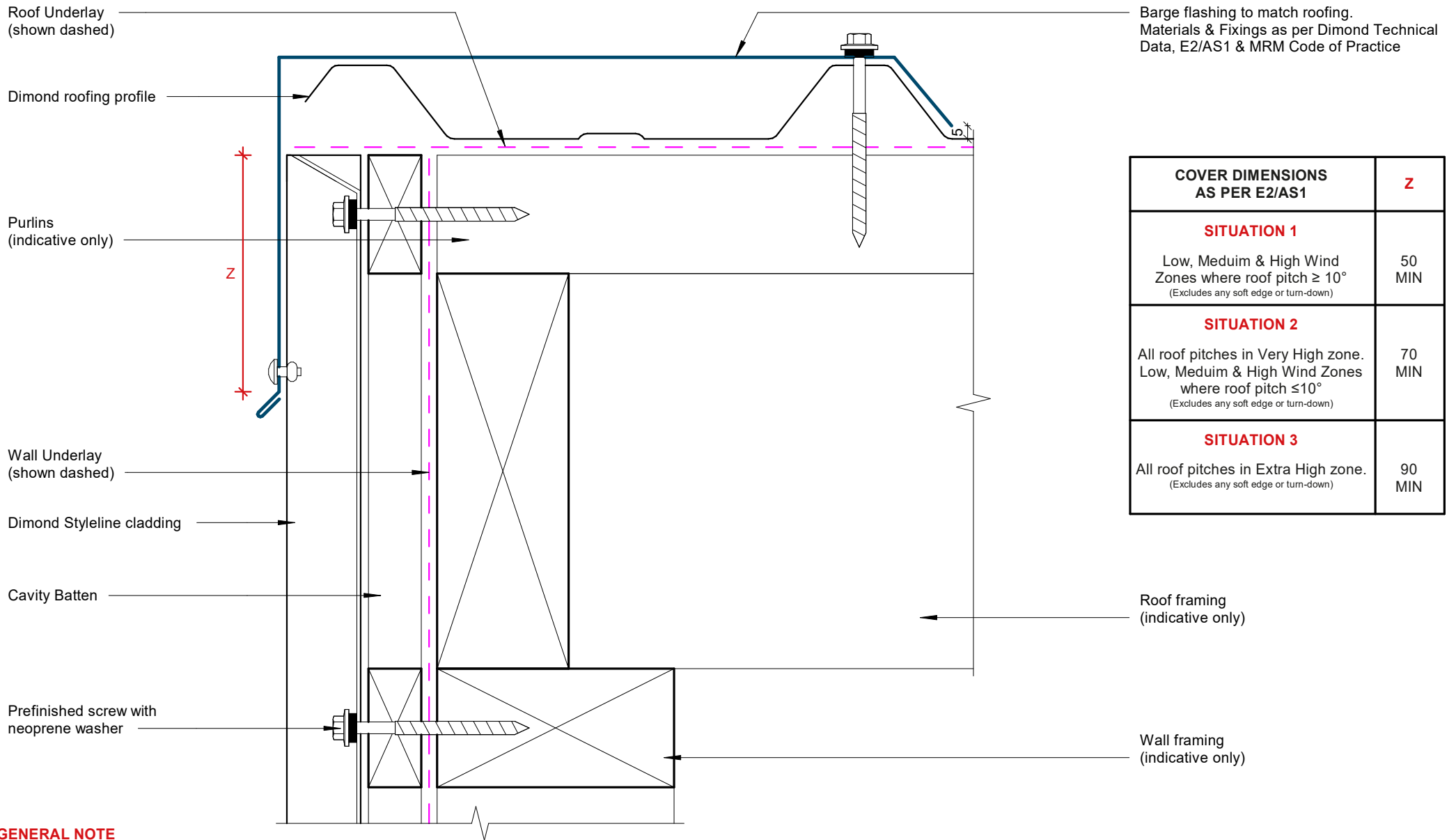


Window Sill Flashing



Transverse Flashing

Typical Flashing Detail

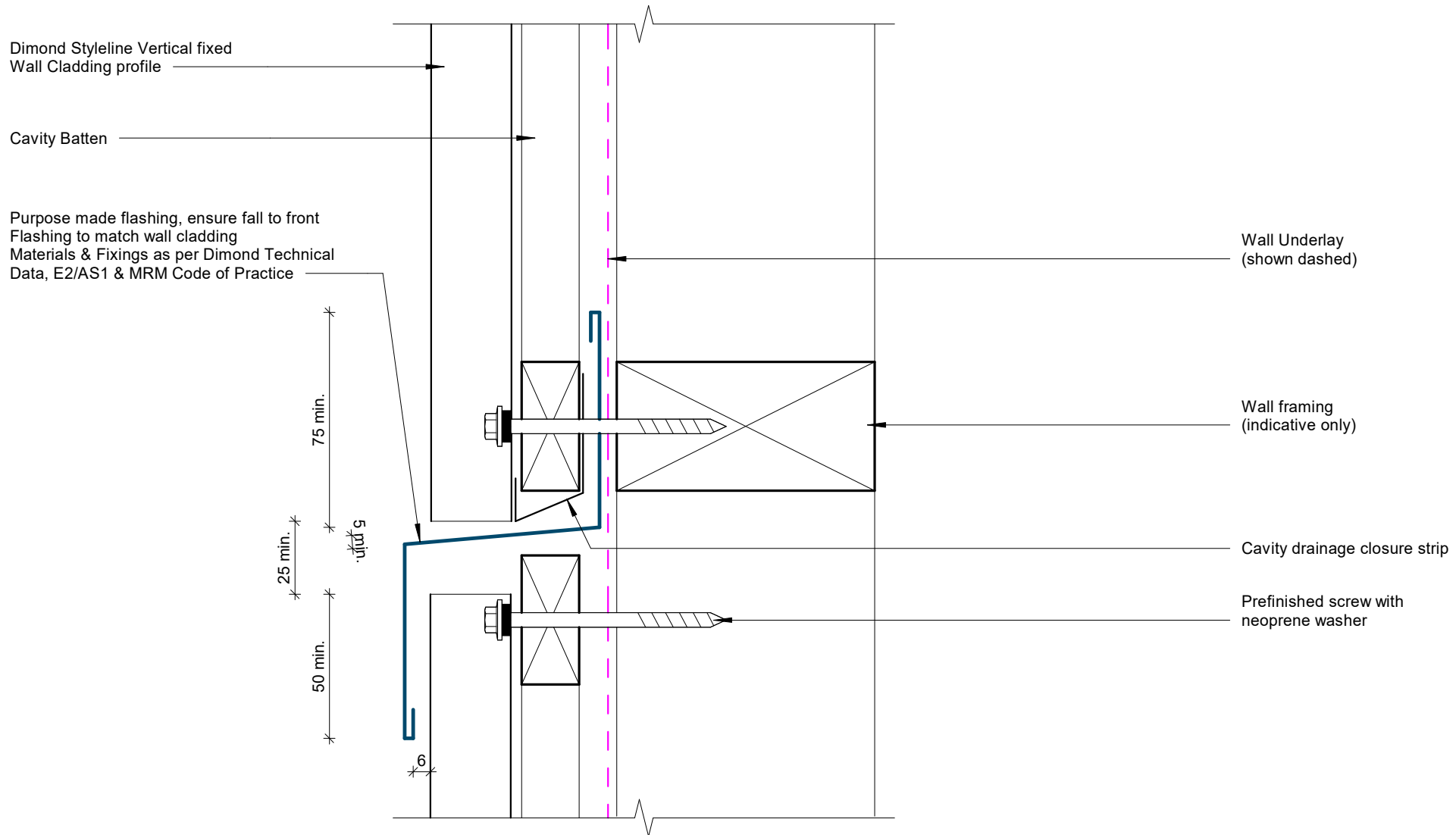


COVER DIMENSIONS AS PER E2/AS1	Z
SITUATION 1 Low, Medium & High Wind Zones where roof pitch $\geq 10^\circ$ (Excludes any soft edge or turn-down)	50 MIN
SITUATION 2 All roof pitches in Very High zone. Low, Medium & High Wind Zones where roof pitch $\leq 10^\circ$ (Excludes any soft edge or turn-down)	70 MIN
SITUATION 3 All roof pitches in Extra High zone. (Excludes any soft edge or turn-down)	90 MIN

GENERAL NOTE

Cavity battens or timber framing that contain copper must be separated from steel cladding by a strip of wall or roof underlay or DPC.

Barge Flashing Detail

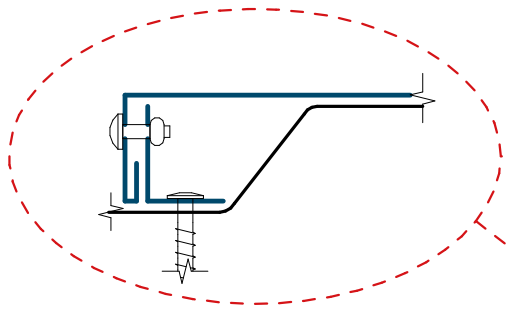


GENERAL NOTE

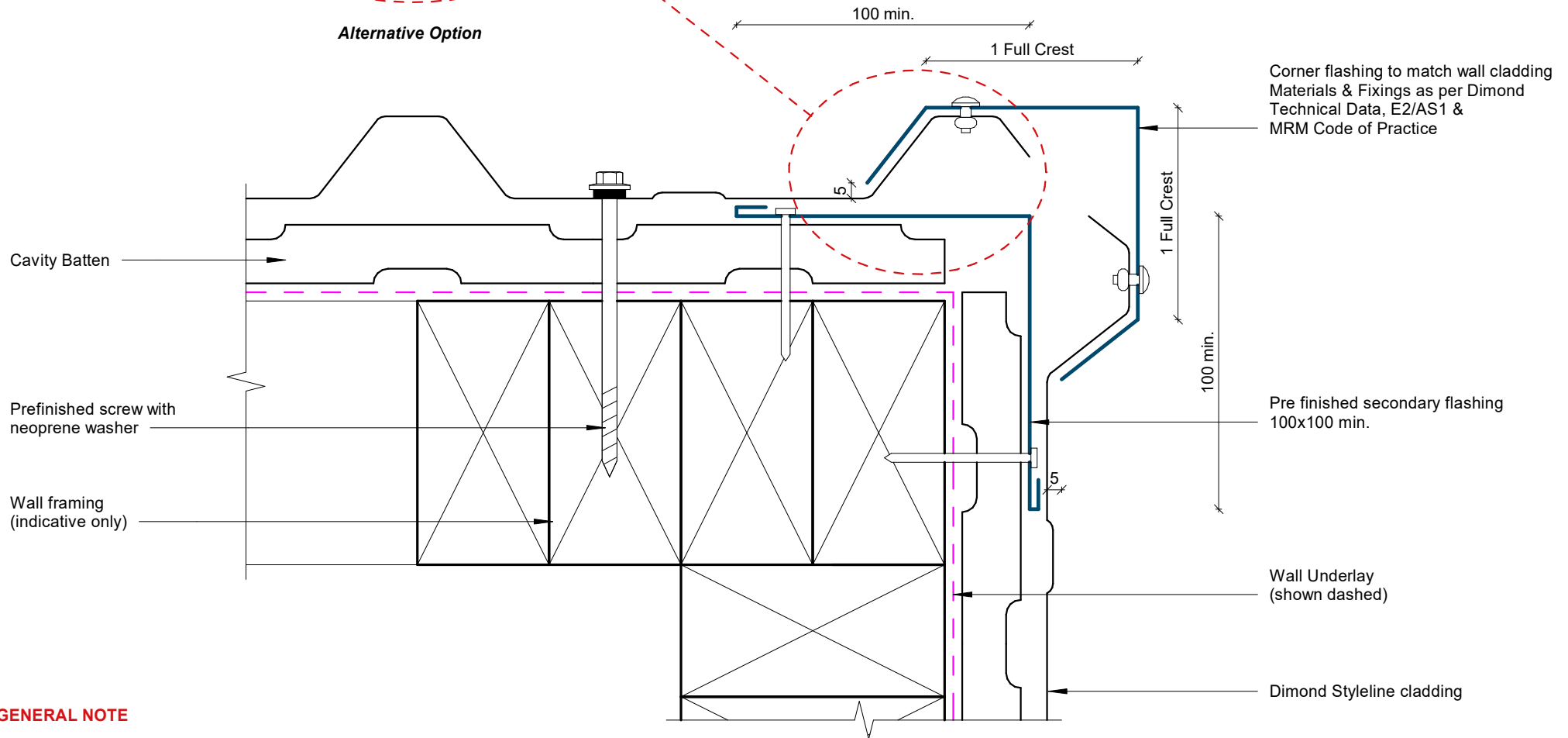
Cavity battens or timber framing that contain copper must be separated from steel cladding by a strip of wall or roof underlay or DPC.

Transverse Junction Detail

Rev: 1 **Styleline Residential Vertical Cladding**



Alternative Option

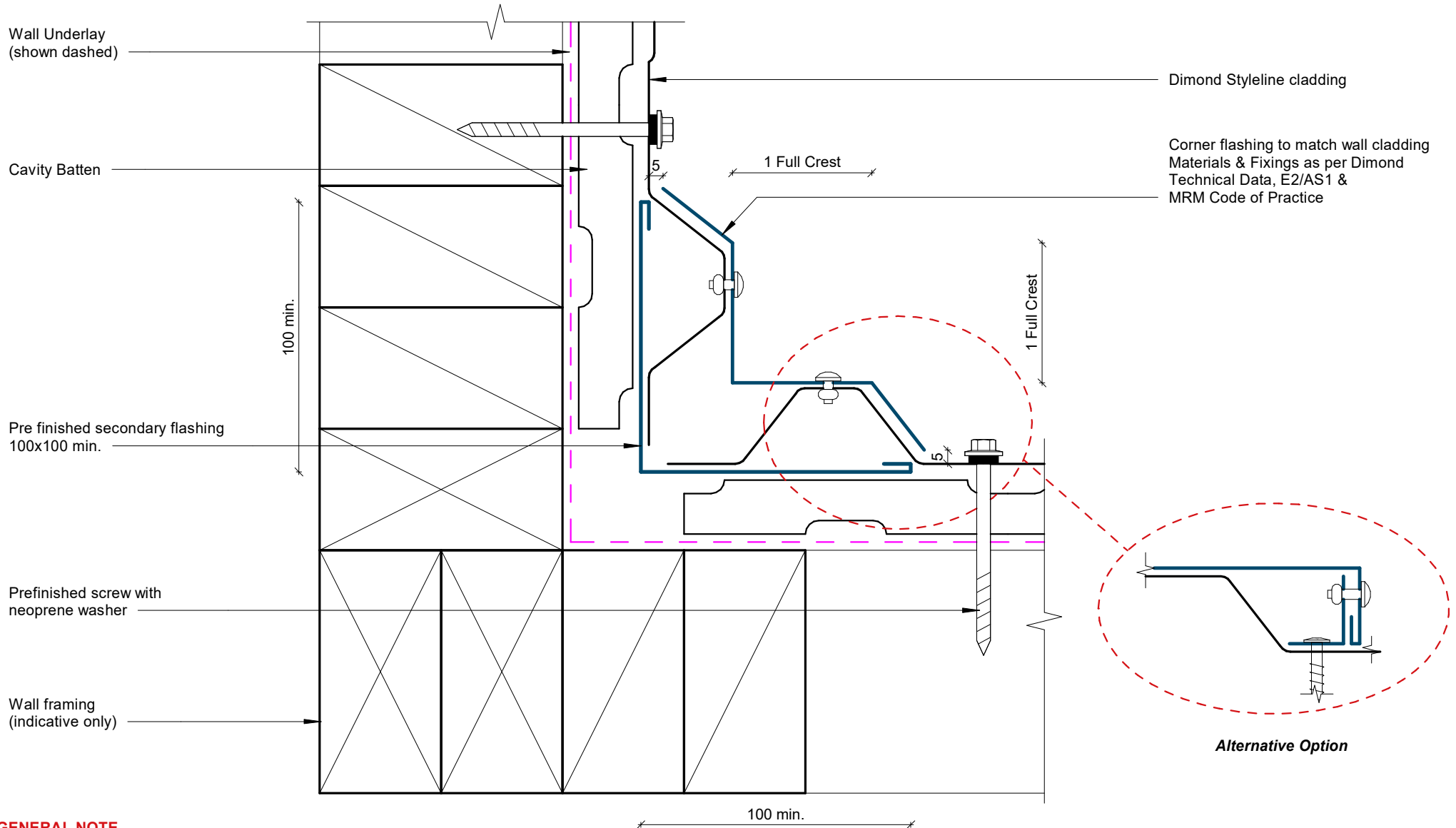


GENERAL NOTE

Cavity battens or timber framing that contain copper must be separated from steel cladding by a strip of wall or roof underlay or DPC.

External Corner Detail

Rev: 1 **Styleline Residential Vertical Cladding**

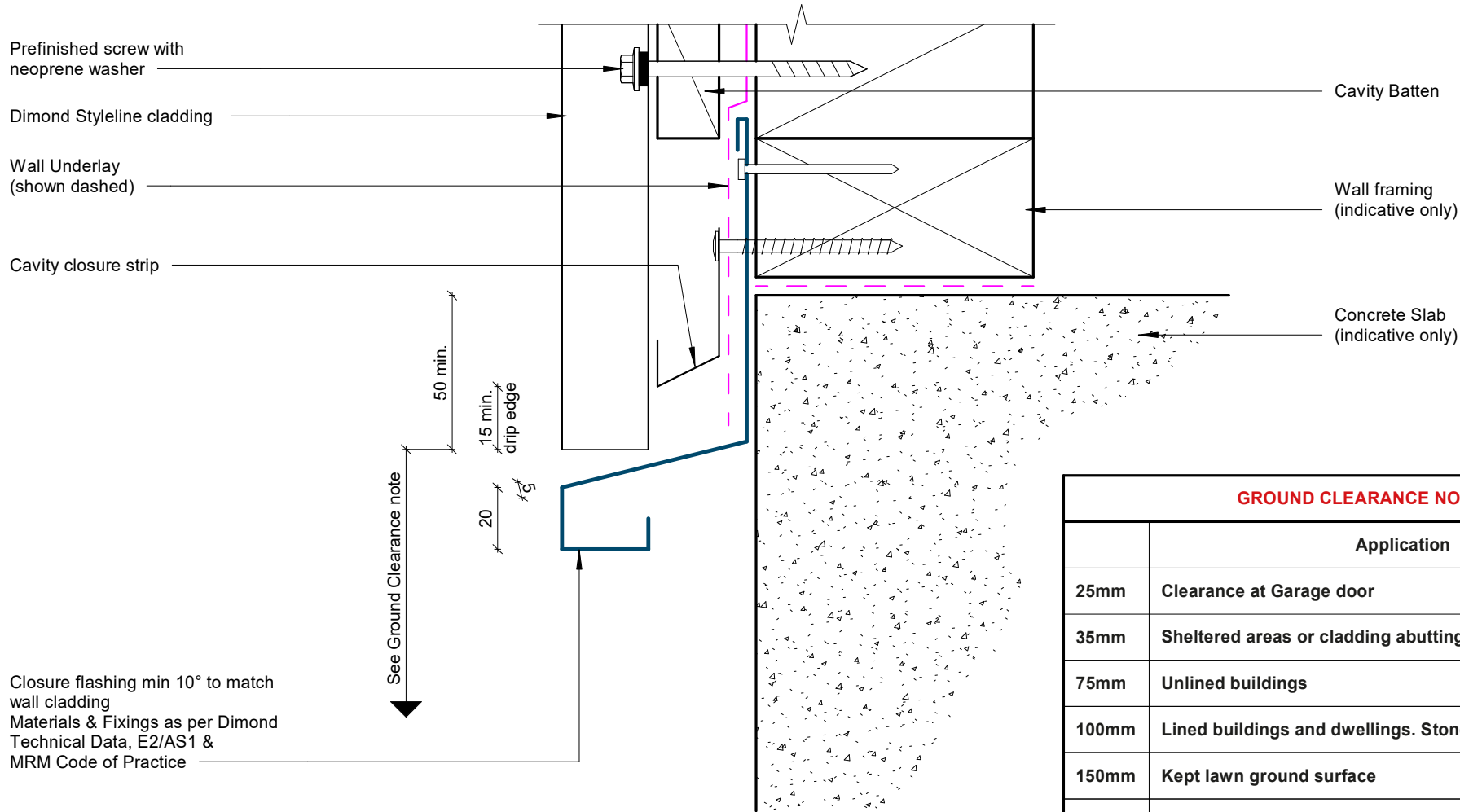


GENERAL NOTE

Cavity battens or timber framing that contain copper must be separated from steel cladding by a strip of wall or roof underlay or DPC.

Internal Corner Detail

Rev: 1 **Styleline Residential Vertical Cladding**



Closure flashing min 10° to match wall cladding
 Materials & Fixings as per Dimond Technical Data, E2/AS1 & MRM Code of Practice

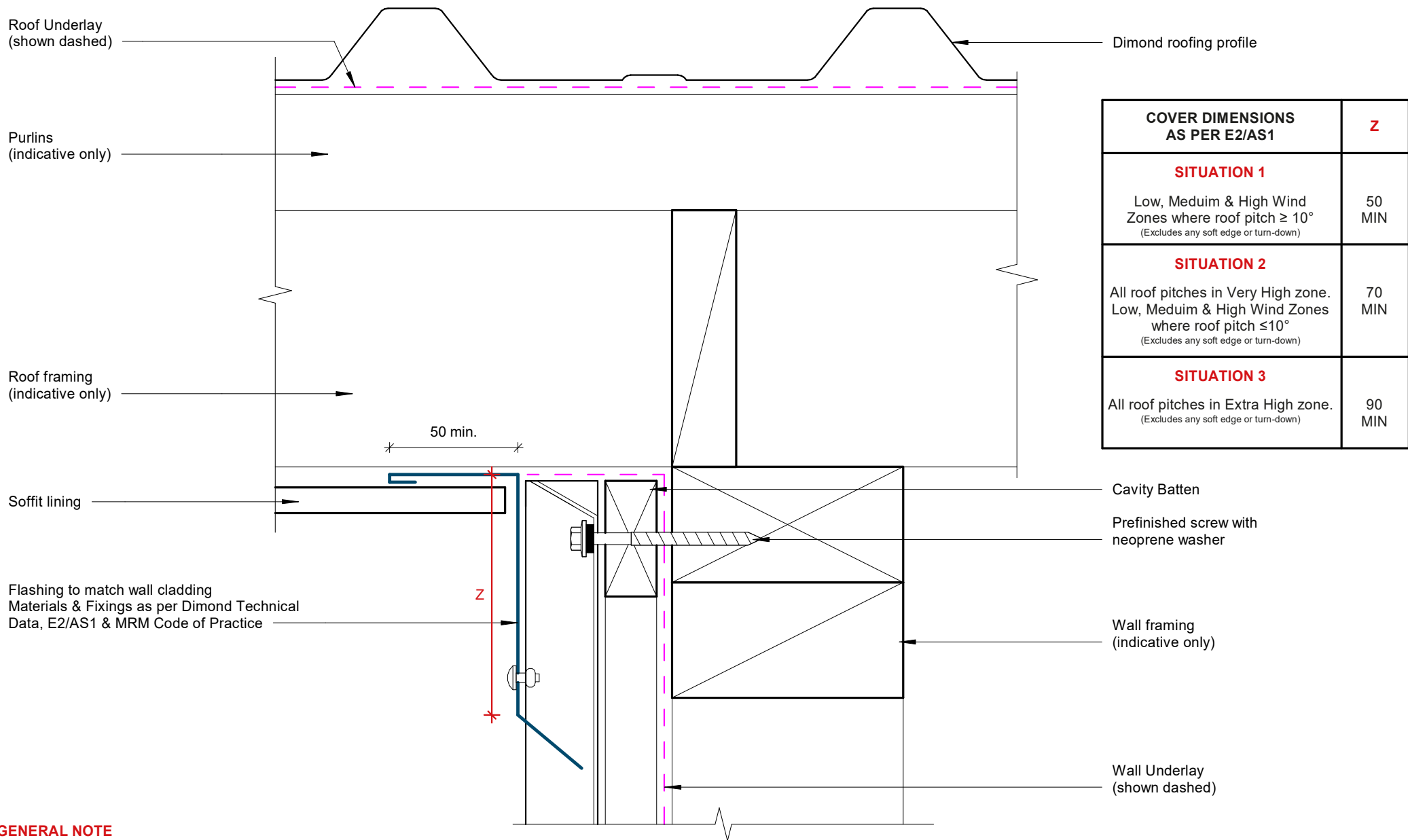
GROUND CLEARANCE NOTE

	Application
25mm	Clearance at Garage door
35mm	Sheltered areas or cladding abutting a deck
75mm	Unlined buildings
100mm	Lined buildings and dwellings. Stone chip ground surface
150mm	Kept lawn ground surface
175mm	Pasture ground surface

GENERAL NOTE

Cavity battens or timber framing that contain copper must be separated from steel cladding by a strip of wall or roof underlay or DPC.

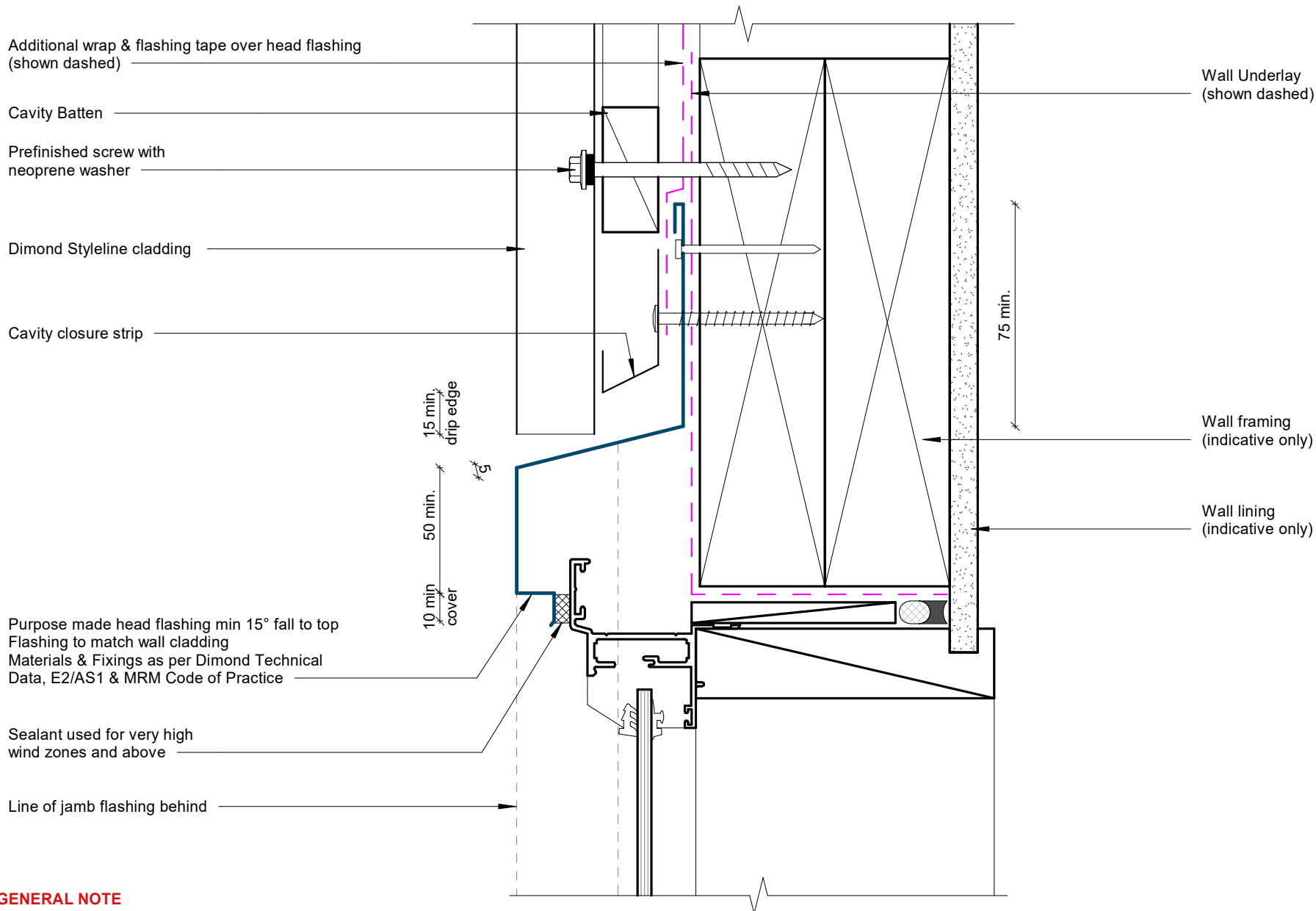
Base Detail



GENERAL NOTE

Cavity battens or timber framing that contain copper must be separated from steel cladding by a strip of wall or roof underlay or DPC.

Soffit Detail



GENERAL NOTE

Cavity battens or timber framing that contain copper must be separated from steel cladding by a strip of wall or roof underlay or DPC.

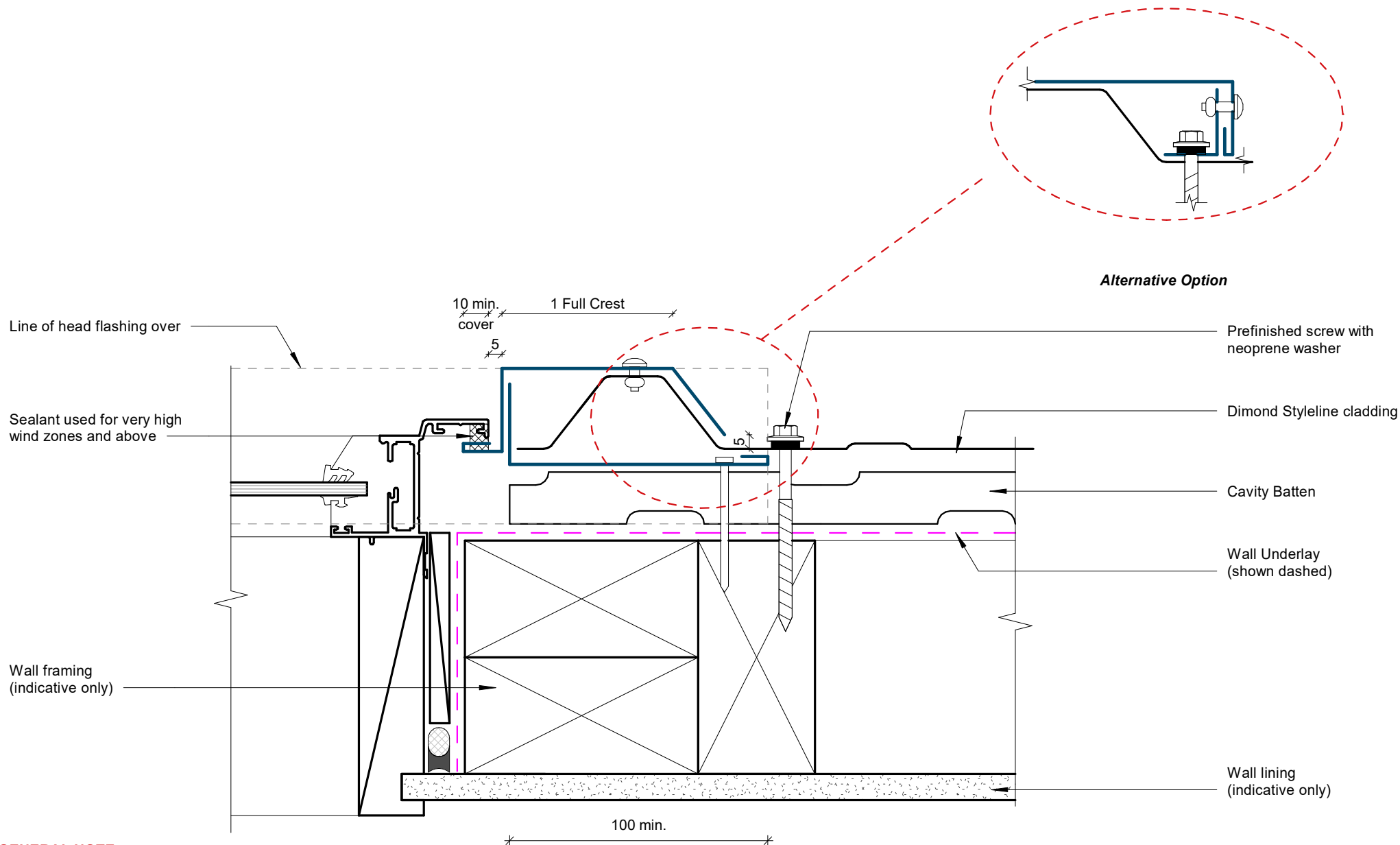
Window Head Detail

Rev: 1 **Styleline Residential Vertical Cladding**



©Dimond 2023, all rights reserved. The information and specifications contained in this document are proprietary to Dimond and may not be used other than for the purpose of designing or building a roof or roofing system solely using products supplied or approved by Dimond ("Permitted Purpose"). You may copy this document solely for the Permitted Purpose, but may not otherwise copy, publish, distribute or modify this document without Dimond's prior written consent. Dimond will not be liable for any use of this document or information and specifications contained in this document, other than for the Permitted Purpose

Date: Jun 2025 Scale: 1 : 2 Sheet: **SRVC09**



GENERAL NOTE

Cavity battens or timber framing that contain copper must be separated from steel cladding by a strip of wall or roof underlay or DPC.

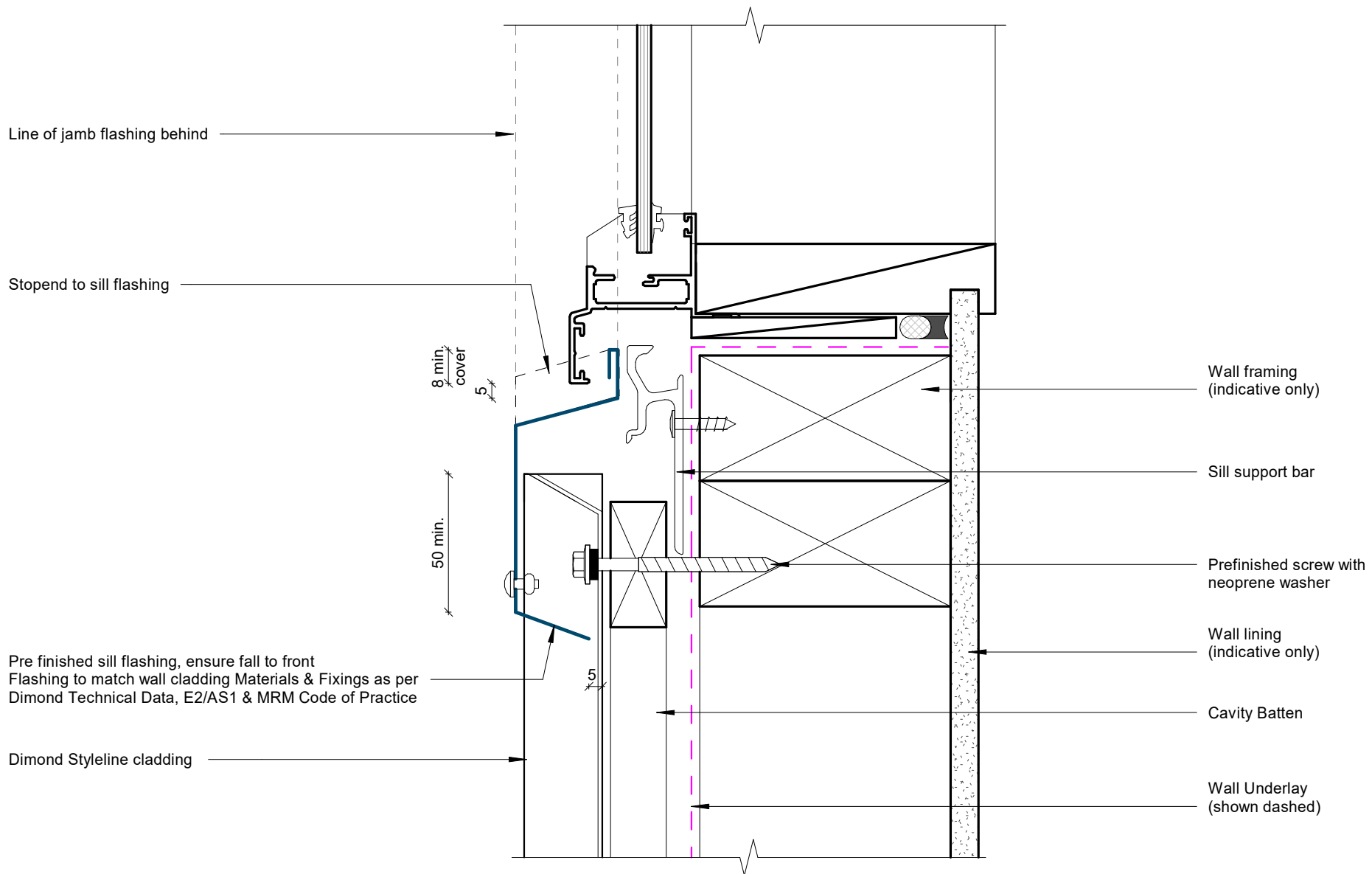
Window Jamb Detail

Rev: 1 **Styleline Residential Vertical Cladding**



©Dimond 2023, all rights reserved. The information and specifications contained in this document are proprietary to Dimond and may not be used other than for the purpose of designing or building a roof or roofing system solely using products supplied or approved by Dimond ("Permitted Purpose"). You may copy this document solely for the Permitted Purpose, but may not otherwise copy, publish, distribute or modify this document without Dimond's prior written consent. Dimond will not be liable for any use of this document or information and specifications contained in this document, other than for the Permitted Purpose

Date: Jun 2025 Scale: 1 : 2 Sheet: **SRVC10**

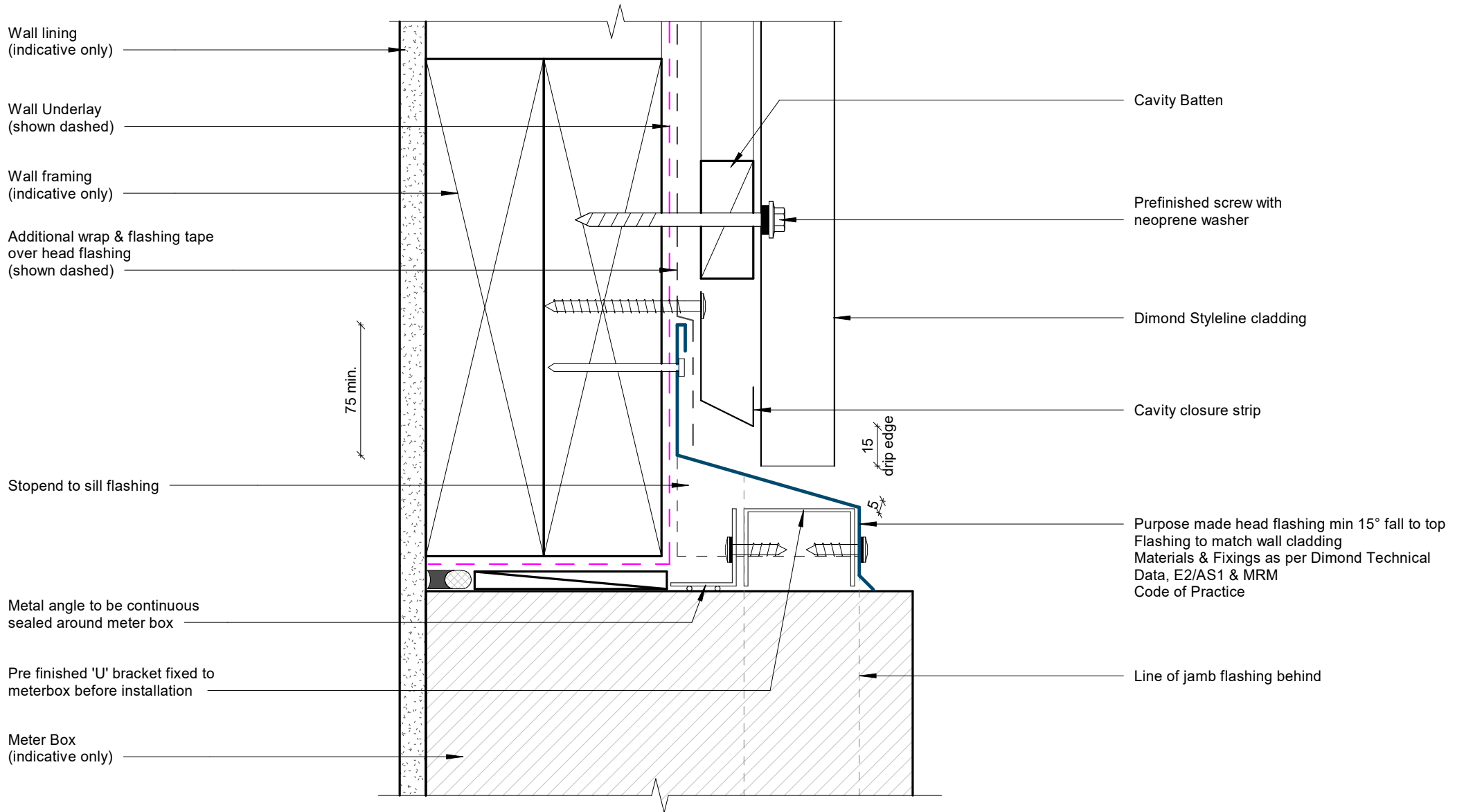


GENERAL NOTE

Cavity battens or timber framing that contain copper must be separated from steel cladding by a strip of wall or roof underlay or DPC.

Window Sill Detail

Rev: 1 **Styleline Residential Vertical Cladding**

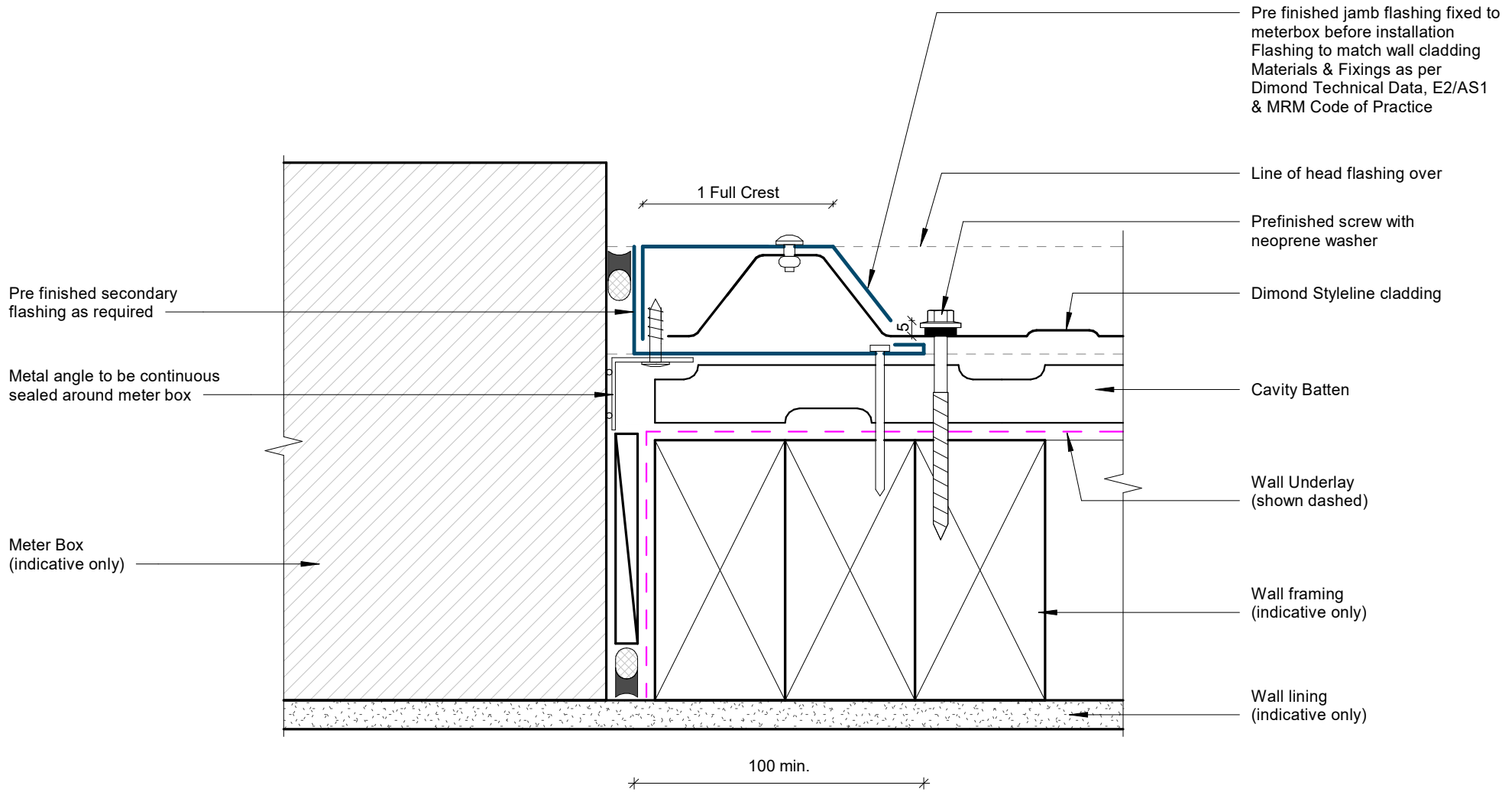


GENERAL NOTE

Cavity battens or timber framing that contain copper must be separated from steel cladding by a strip of wall or roof underlay or DPC.

Meterbox Head Detail

Rev: 1 **Styleline Residential Vertical Cladding**

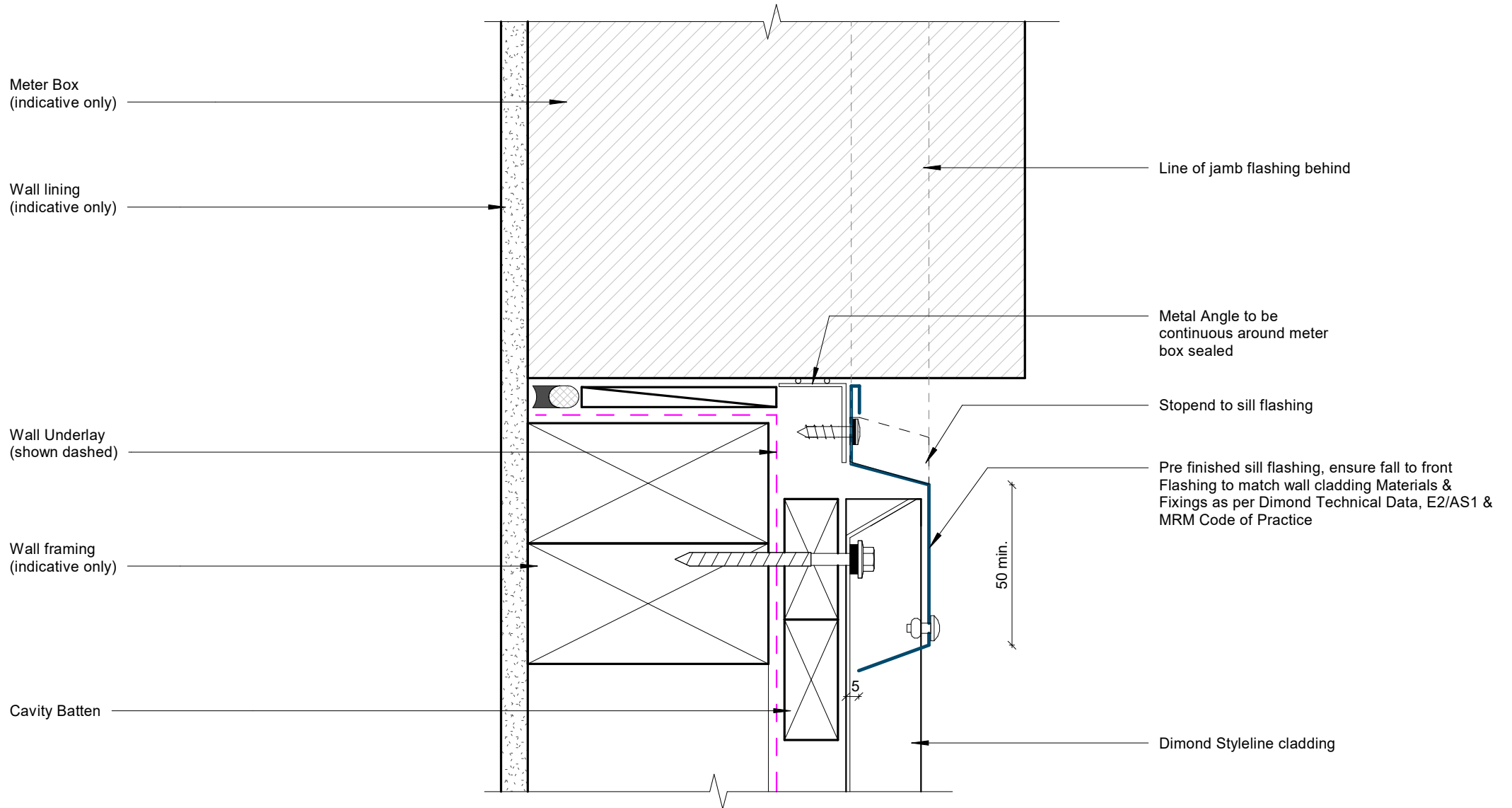


GENERAL NOTE

Cavity battens or timber framing that contain copper must be separated from steel cladding by a strip of wall or roof underlay or DPC.

Meterbox Jamb Detail

Rev: 1 **Styleline Residential Vertical Cladding**

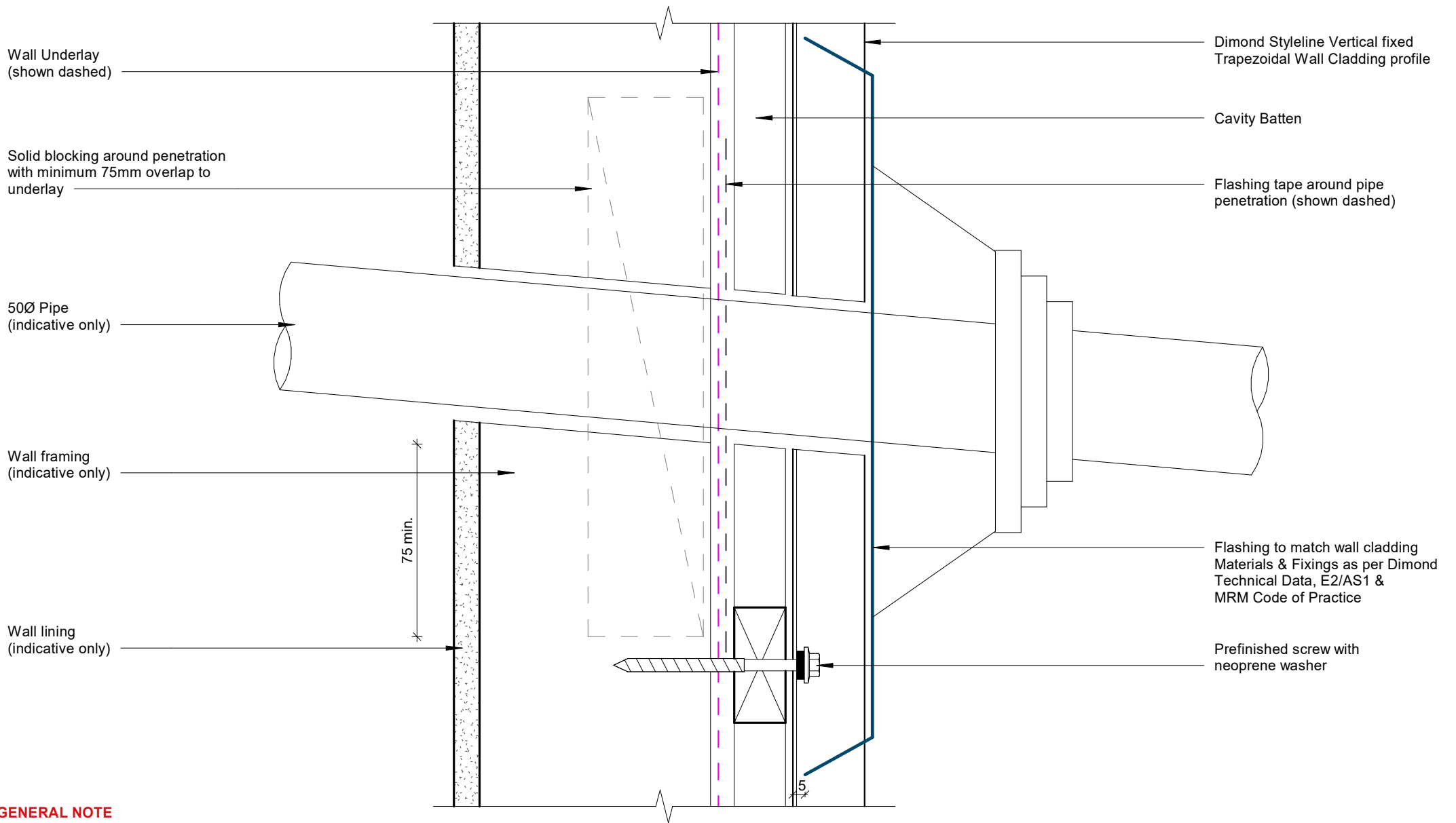


GENERAL NOTE

Cavity battens or timber framing that contain copper must be separated from steel cladding by a strip of wall or roof underlay or DPC.

Meterbox Sill Detail

Rev: 1 **Styleline Residential Vertical Cladding**

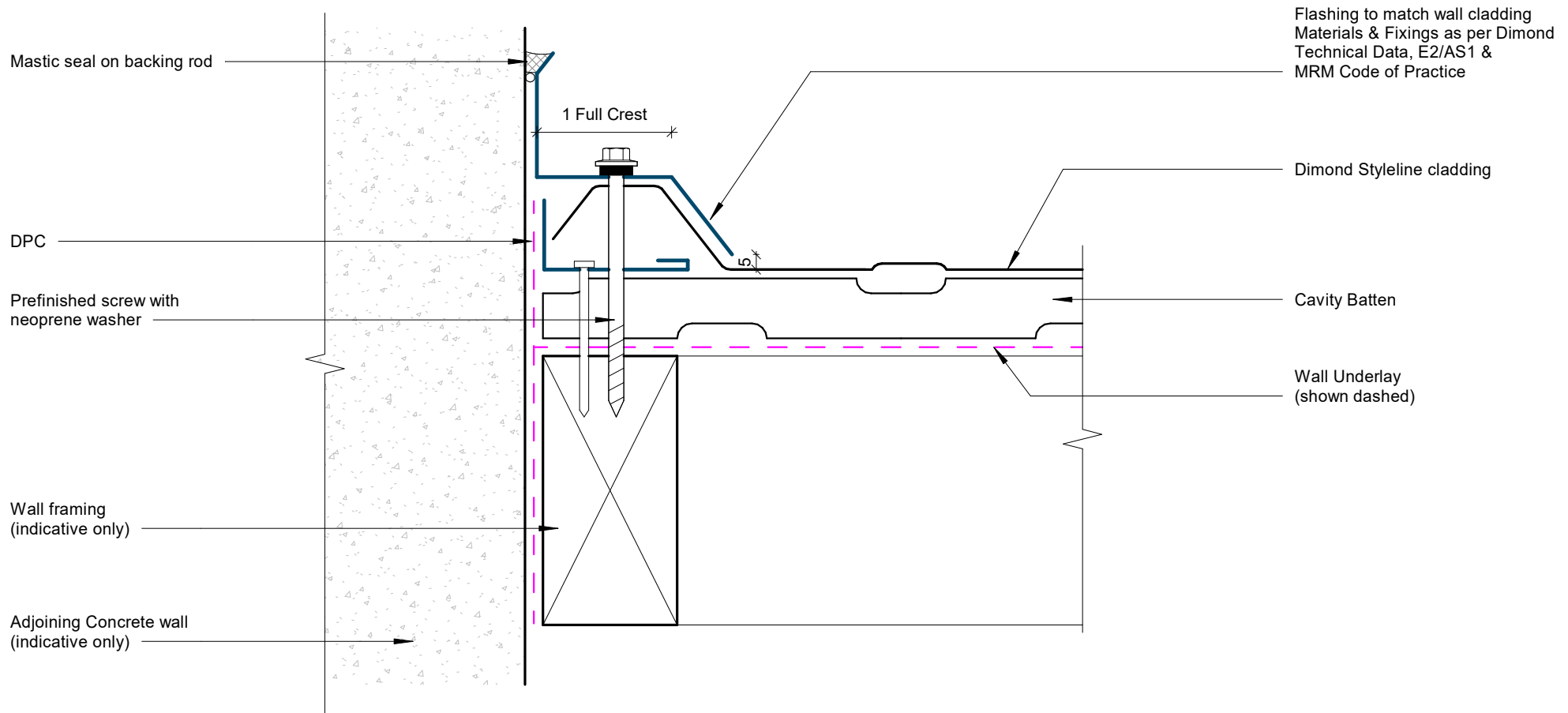


GENERAL NOTE

Cavity battens or timber framing that contain copper must be separated from steel cladding by a strip of wall or roof underlay or DPC.

Pipe Penetration Detail

Rev: 1 **Styleline Residential Vertical Cladding**



GENERAL NOTE

Cavity battens or timber framing that contain copper must be separated from steel cladding by a strip of wall or roof underlay or DPC.

Cladding to Concrete Junction Detail

Rev: 1 **Styleline Residential Vertical Cladding**

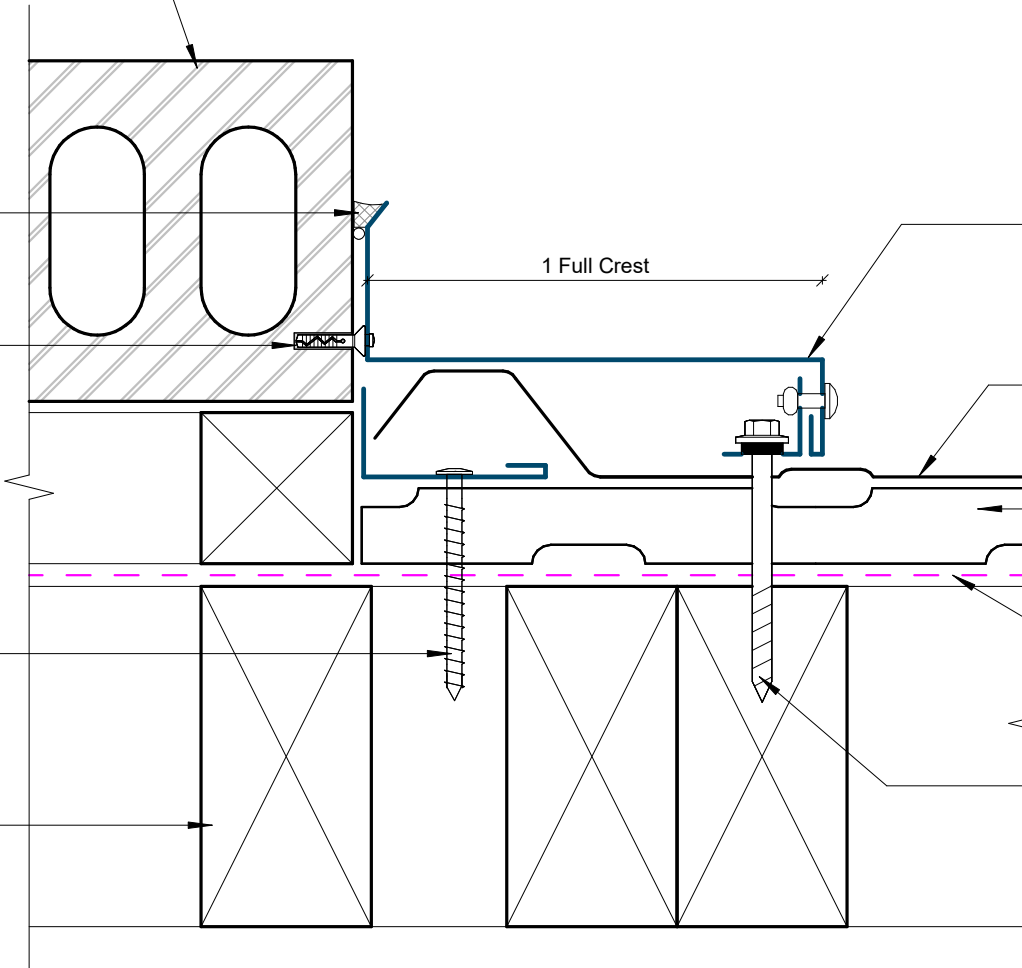
Adjoining Brick veneer on cavity
(indicative only)

Mastic seal on backing rod

Rawplug

Prefinished screw

Wall framing
(indicative only)



Flashing to match wall cladding
Materials & Fixings as per Dimond
Technical Data, E2/AS1 &
MRM Code of Practice

Dimond Styleline cladding

Cavity Batten

Wall Underlay
(shown dashed)

Prefinished screw with
neoprene washer

GENERAL NOTE

Cavity battens or timber framing that contain copper must be separated from steel cladding by a strip of wall or roof underlay or DPC.

Cladding to Brick Junction Detail

Rev: 1 **Styleline Residential Vertical Cladding**

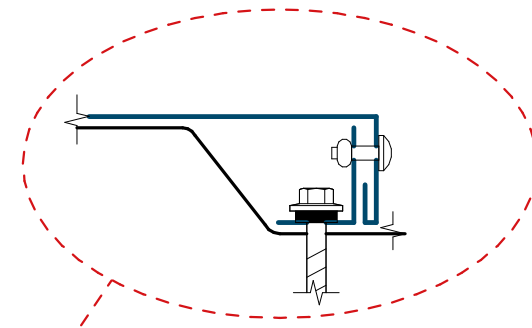
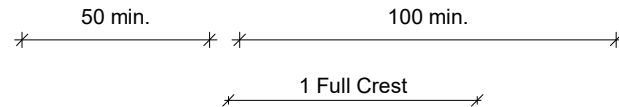
Flashing to match wall cladding
Materials & Fixings as per Dimond
Technical Data, E2/AS1 &
MRM Code of Practice

Adjoining Panel
Cladding on cavity
(indicative only)

Prefinished screw

Wall Underlay
(shown dashed)

Wall framing
(indicative only)



Alternative Option

Dimond Styleline cladding

Cavity Batten

Prefinished screw with
neoprene washer

Pre finished
secondary flashing

GENERAL NOTE

Cavity battens or timber framing that contain copper must be separated from steel cladding by a strip of wall or roof underlay or DPC.

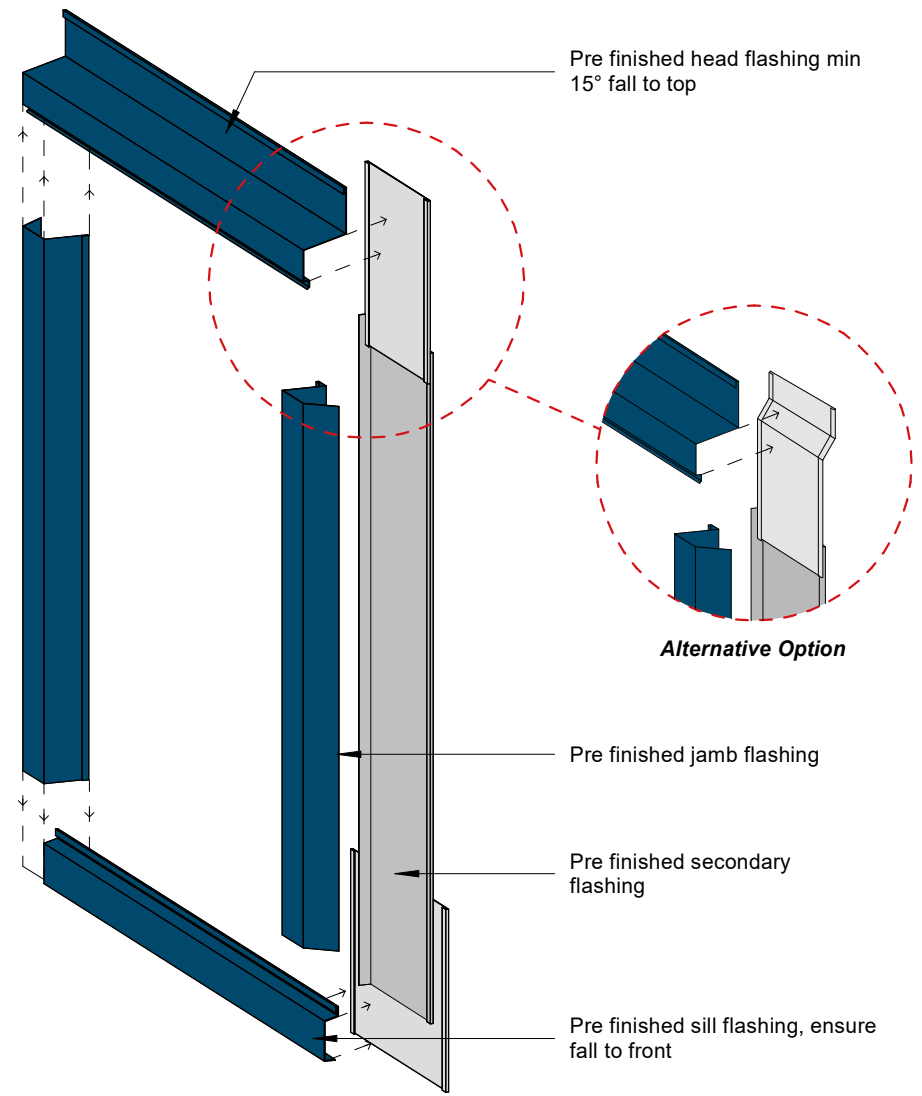
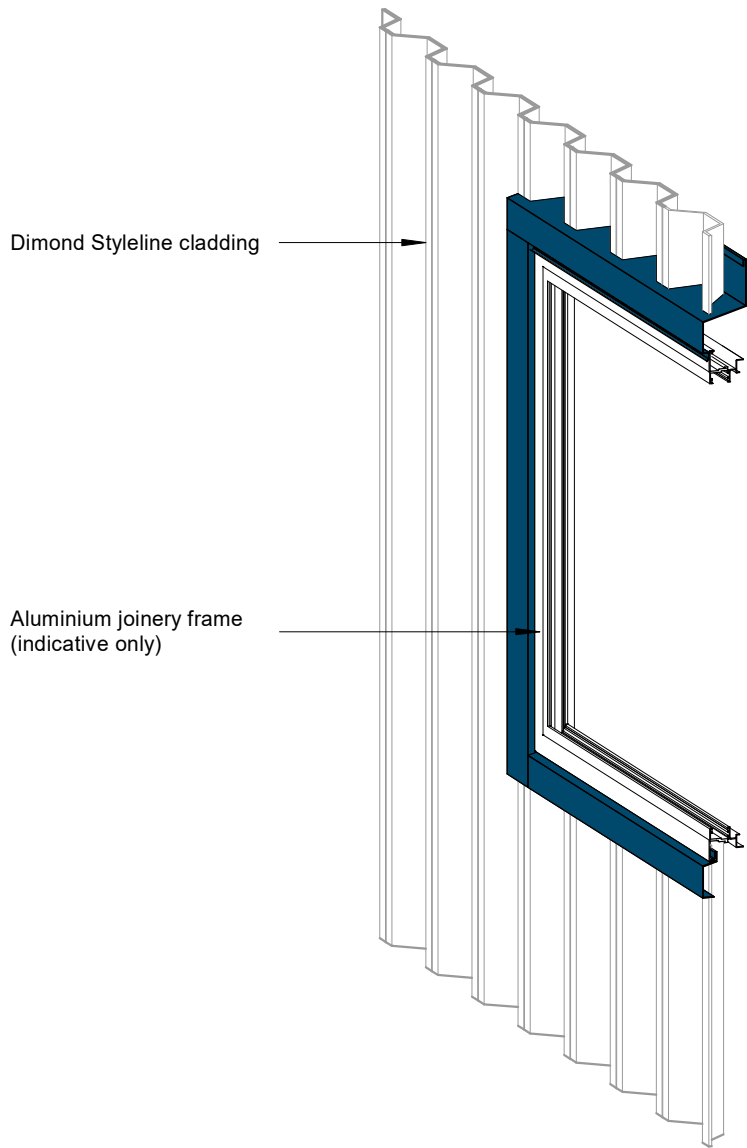
Cladding to Panel Junction Detail

Rev: 1 **Styleline Residential Vertical Cladding**



©Dimond 2023, all rights reserved. The information and specifications contained in this document are proprietary to Dimond and may not be used other than for the purpose of designing or building a roof or roofing system solely using products supplied or approved by Dimond ("Permitted Purpose"). You may copy this document solely for the Permitted Purpose, but may not otherwise copy, publish, distribute or modify this document without Dimond's prior written consent. Dimond will not be liable for any use of this document or information and specifications contained in this document, other than for the Permitted Purpose

Date: Jun 2025 Scale: 1 : 2 Sheet: **SRVC18**



GENERAL NOTE

Cavity battens or timber framing that contain copper must be separated from steel cladding by a strip of wall or roof underlay or DPC.

Flashing to match wall cladding
 Materials & Fixings as per Dimond Technical Data, E2/AS1 & MRM Code of Practice

3D Window Flashing Detail

Rev: 1 **Styleline Residential Vertical Cladding**



©Dimond 2023, all rights reserved. The information and specifications contained in this document are proprietary to Dimond and may not be used other than for the purpose of designing or building a roof or roofing system solely using products supplied or approved by Dimond ("Permitted Purpose"). You may copy this document solely for the Permitted Purpose, but may not otherwise copy, publish, distribute or modify this document without Dimond's prior written consent. Dimond will not be liable for any use of this document or information and specifications contained in this document, other than for the Permitted Purpose

Date: Jun 2025 Not to scale Sheet: **SRVC19**