

STYLELINE

RESIDENTIAL HORIZONTAL WALL CLADDING

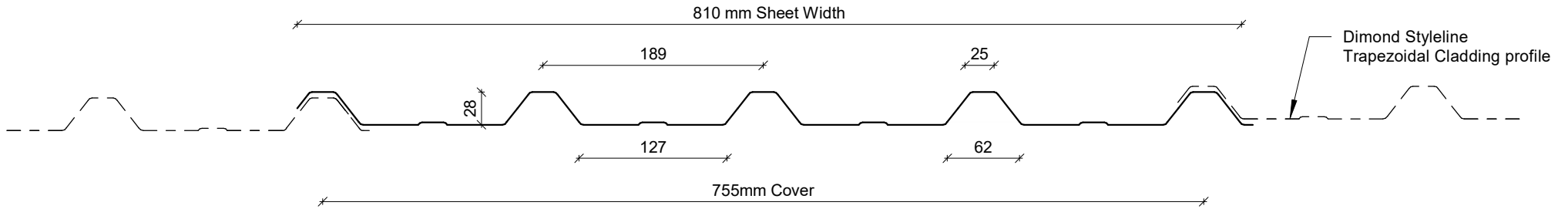
DETAILS:

REV:

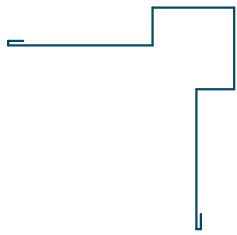
DATE:

SRHC00	Cover Sheet	1	July 2025
SRHC01	Profile Summary	1	July 2025
SRHC02	Typical Flashing Details	1	July 2025
SRHC03	Barge Flashing Detail	1	July 2025
SRHC04	External Corner Detail	1	July 2025
SRHC05	Internal Corner Detail	1	July 2025
SRHC06	Base Detail	1	July 2025
SRHC07	Soffit Detail	1	July 2025
SRHC08	Window/ Door Head Detail	1	July 2025
SRHC09	Window/ Door Jamb Detail	1	July 2025
SRHC10	Window Sill Detail	1	July 2025
SRHC11	Meterbox Head Detail	1	July 2025
SRHC12	Meterbox Jamb Detail	1	July 2025
SRHC13	Meterbox Sill Detail	1	July 2025
SRHC14	Pipe Penetration Detail	1	July 2025
SRHC15	Cladding to Concrete Junction Detail	1	July 2025
SRHC16	Cladding to Brick Junction Detail	1	July 2025
SRHC17	Cladding to Panel Junction Detail	1	July 2025
SRHC18	3D Window Flashing Detail	1	July 2025

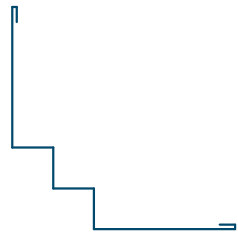
PROFILE OVERVIEW	
MINIMUM PITCH	3°
RIB TYPE	Low
RIBS PER SHEET	5 Ribs per sheet
WIDTH	755mm Cover, 810mm Sheet



Profile Summary



External Corner Flashing



Internal Corner Flashing



Window Head Flashing



Barge Flashing



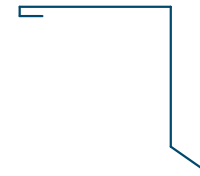
Window Sill Flashing



Base Flashing

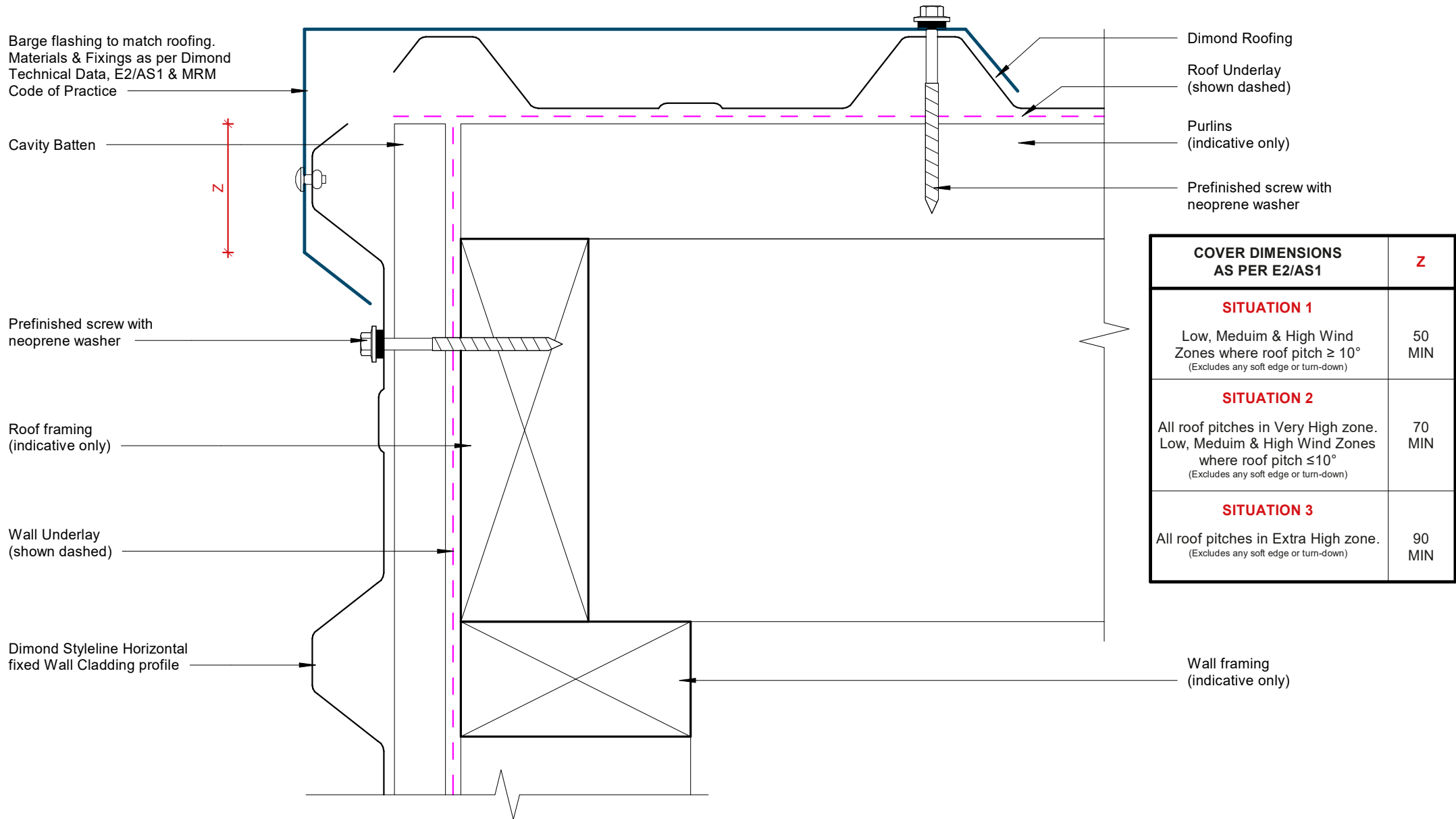


Window Jamb Flashing



Soffit Flashing

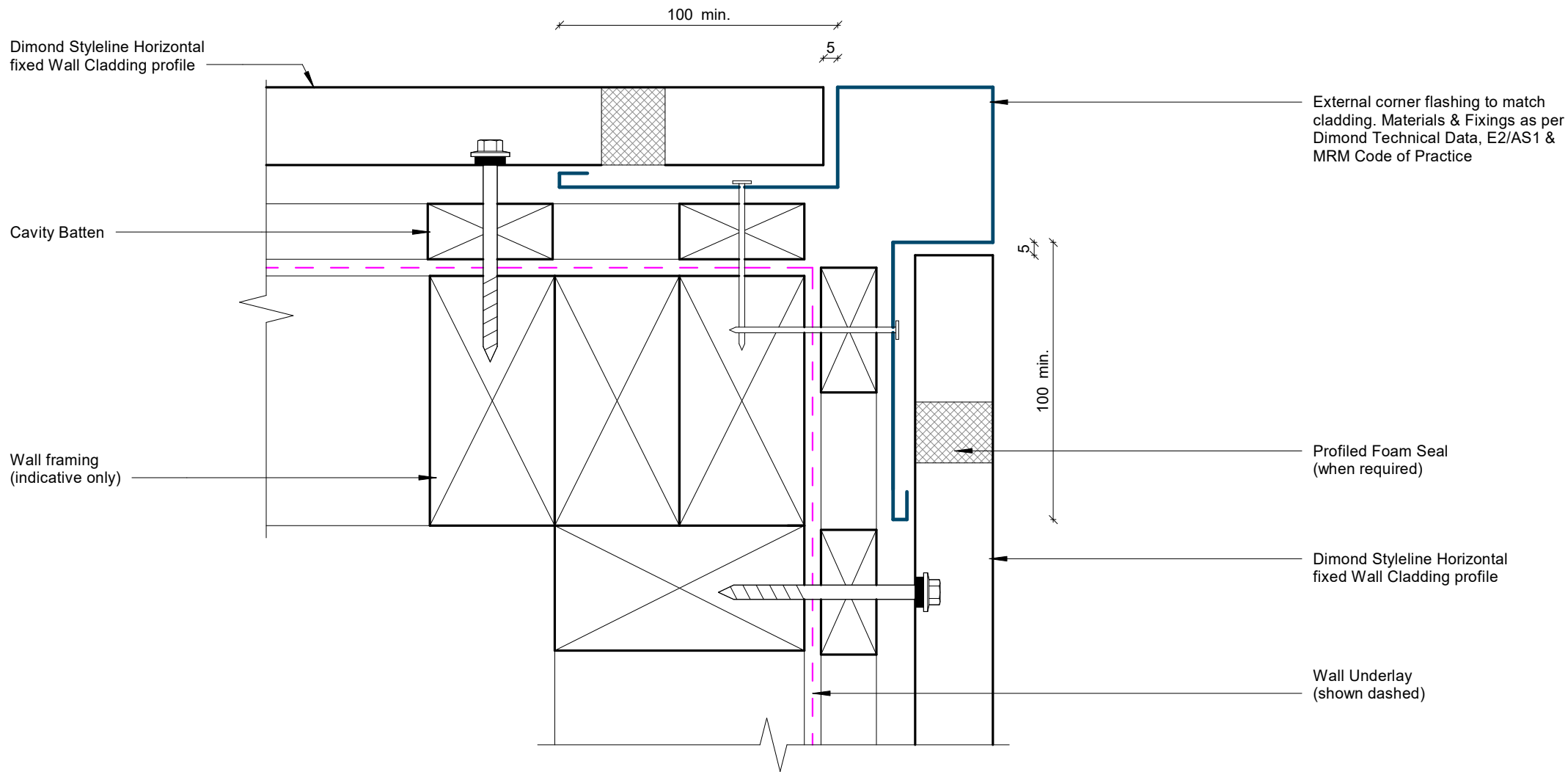
Typical Flashing Details



GENERAL NOTE

Cavity battens or timber framing that contain copper must be separated from steel cladding by a strip of wall or roof underlay or DPC.

Barge Flashing Detail



GENERAL NOTE

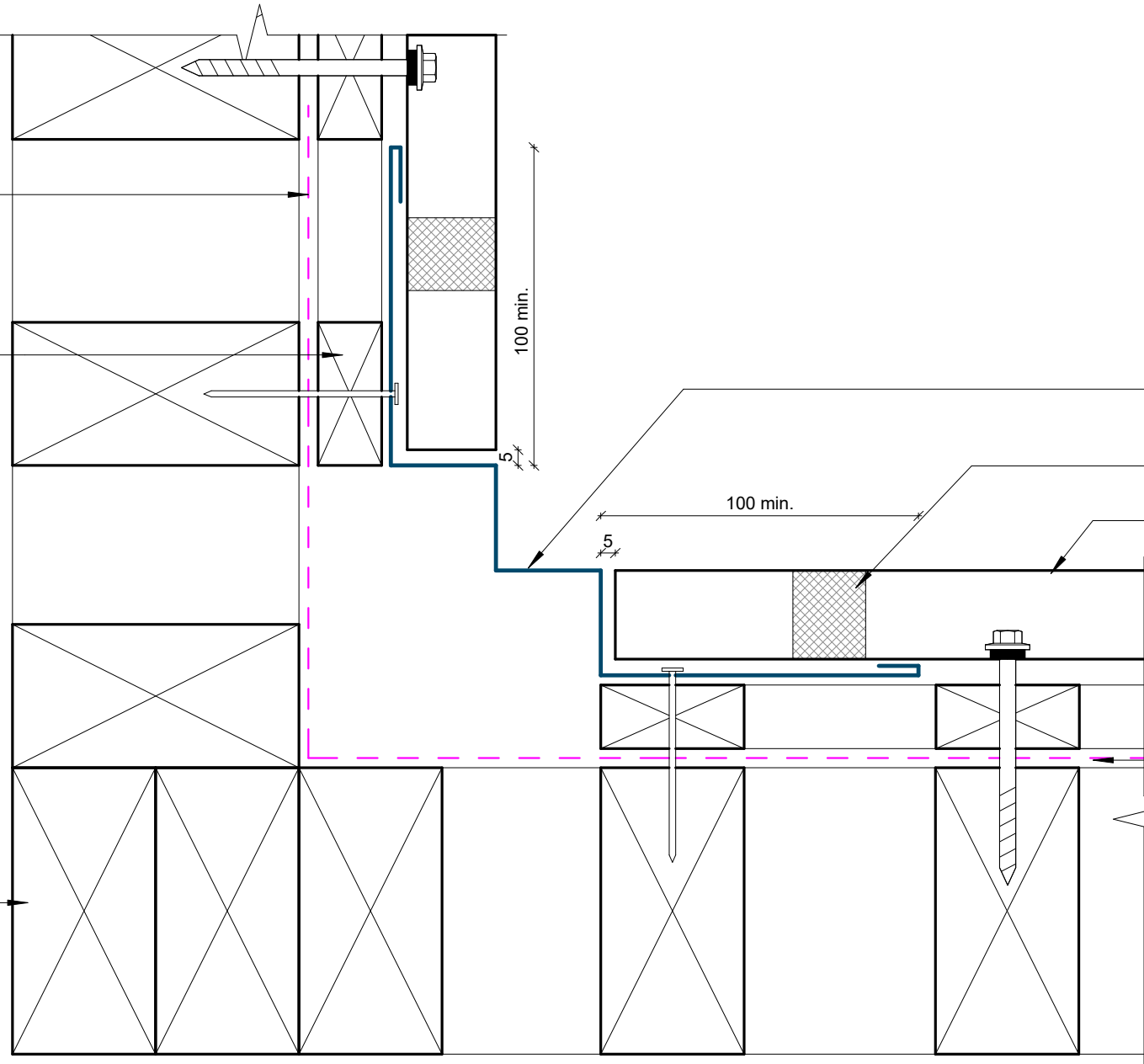
Cavity battens or timber framing that contain copper must be separated from steel cladding by a strip of wall or roof underlay or DPC.

External Corner Detail

Wall Underlay
(shown dashed)

Cavity Batten

Wall framing
(indicative only)



Internal Corner flashing. Materials & Fixings as per Dimond Technical Data, E2/AS1 & MRM Code of Practice

Profiled Foam Seal (when required)

Dimond Styleline Horizontal fixed Wall Cladding profile

Wall Underlay (shown dashed)

GENERAL NOTE

Cavity battens or timber framing that contain copper must be separated from steel cladding by a strip of wall or roof underlay or DPC.

Internal Corner Detail

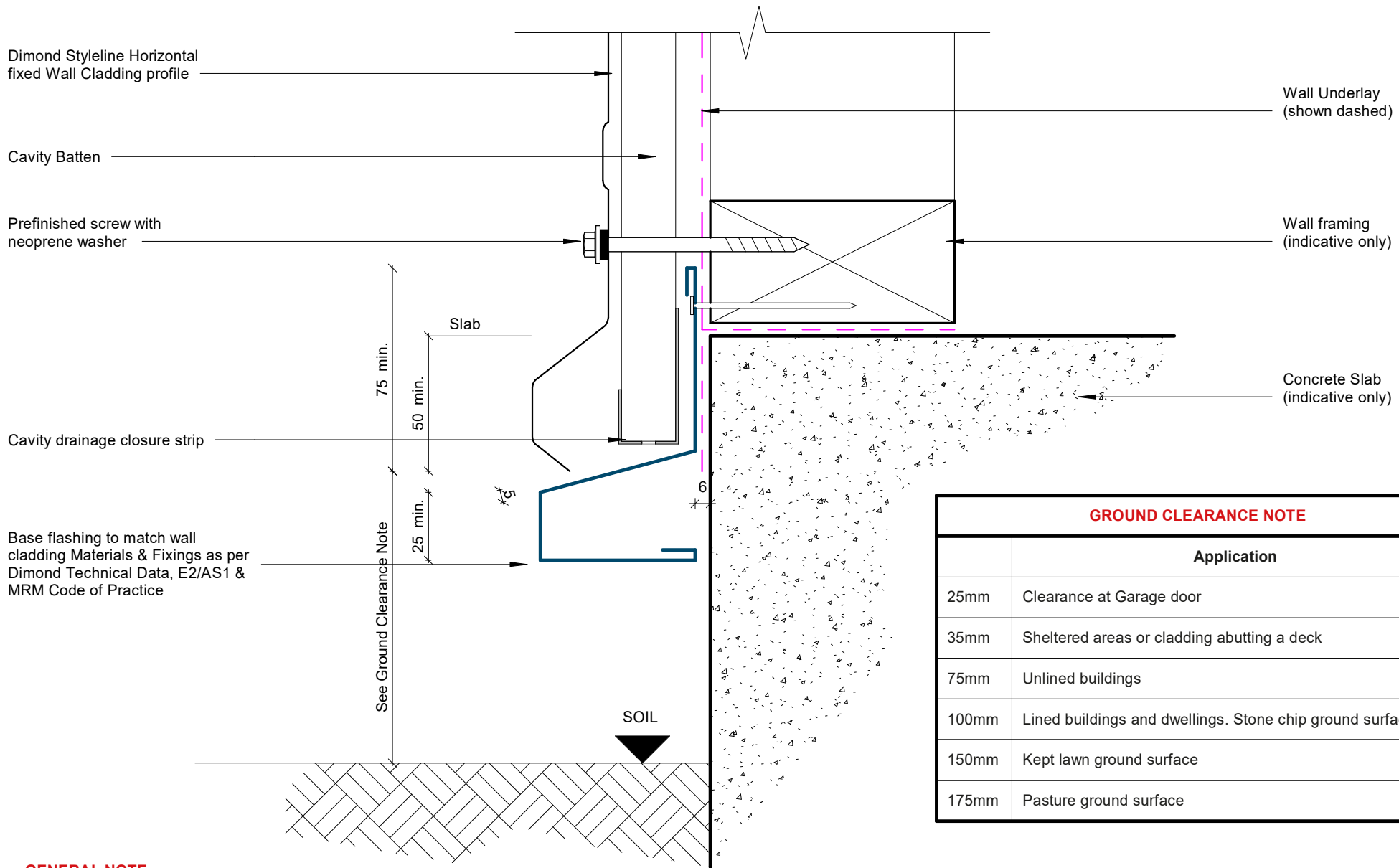
Styleline Residential Horizontal Cladding

Rev: 1



©Dimond 2023, all rights reserved. The information and specifications contained in this document are proprietary to Dimond and may not be used other than for the purpose of designing or building a roof or roofing system solely using products supplied or approved by Dimond ("Permitted Purpose"). You may copy this document solely for the Permitted Purpose, but may not otherwise copy, publish, distribute or modify this document without Dimond's prior written consent. Dimond will not be liable for any use of this document or information and specifications contained in this document, other than for the Permitted Purpose

Date: July 2025 Scale: 1 : 2 Sheet: **SRHC05**



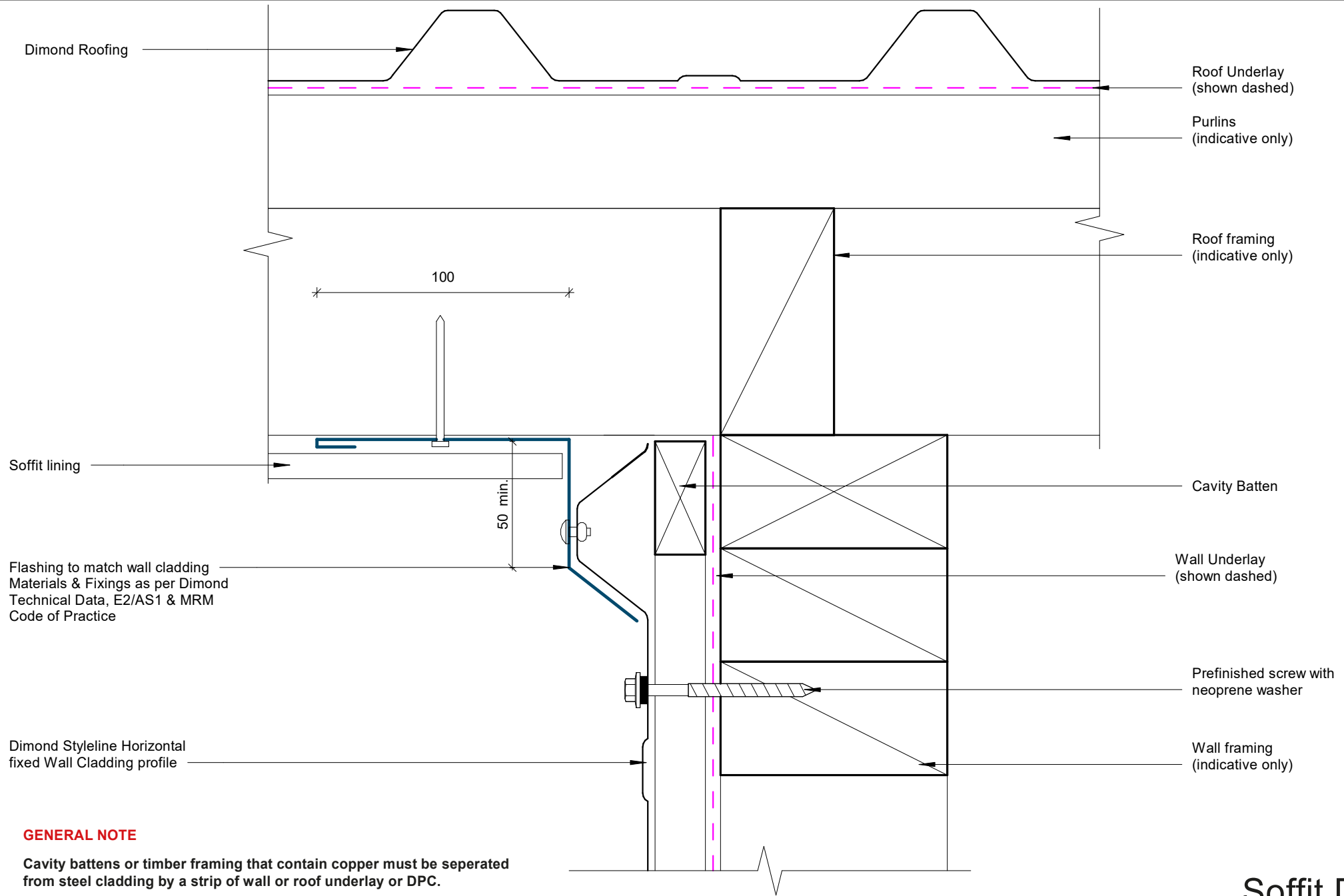
GROUND CLEARANCE NOTE

	Application
25mm	Clearance at Garage door
35mm	Sheltered areas or cladding abutting a deck
75mm	Unlined buildings
100mm	Lined buildings and dwellings. Stone chip ground surface
150mm	Kept lawn ground surface
175mm	Pasture ground surface

GENERAL NOTE

Cavity battens or timber framing that contain copper must be separated from steel cladding by a strip of wall or roof underlay or DPC.

Base Detail



GENERAL NOTE

Cavity battens or timber framing that contain copper must be separated from steel cladding by a strip of wall or roof underlay or DPC.

Soffit Detail

Rev: 1

Styleline Residential Horizontal Cladding

Dimond Styleline Horizontal fixed
Wall Cladding profile

Prefinished screw with
neoprene washer

Cavity Batten

Cavity drainage closure strip

Head flashing min 15° fall to top.
Materials & Fixings as per Dimond
Technical Data, E2/AS1 & MRM
Code of Practice

Sealant used for very high
wind zones and above

Line of jamb flashing behind

Wall Underlay
(shown dashed)

75mm min.
flashing lap

Wall framing
(indicative only)

Wall lining
(indicative only)

10 min.
cover

GENERAL NOTE

Cavity battens or timber framing that contain copper must be seperated from steel cladding by a strip of wall or roof underlay or DPC.

Window/ Door Head Detail

Rev: 1

Styleline Residential Horizontal Cladding

Profiled Foam Seal
(when required)

Sealant used for very high
wind zones and above

Line of head flashing over

100 min.

50 min.

Flashing to match wall cladding
Materials & Fixings as per Dimond
Technical Data, E2/AS1 & MRM
Code of Practice

Dimond Styleline Horizontal
fixed Wall Cladding profile

Cavity Batten

Wall Underlay
(shown dashed)

Prefinished screw with
neoprene washer

Wall framing
(indicative only)

Wall lining
(indicative only)

GENERAL NOTE

Cavity battens or timber framing that contain copper must be separated from steel cladding by a strip of wall or roof underlay or DPC.

Window/ Door Jamb Detail

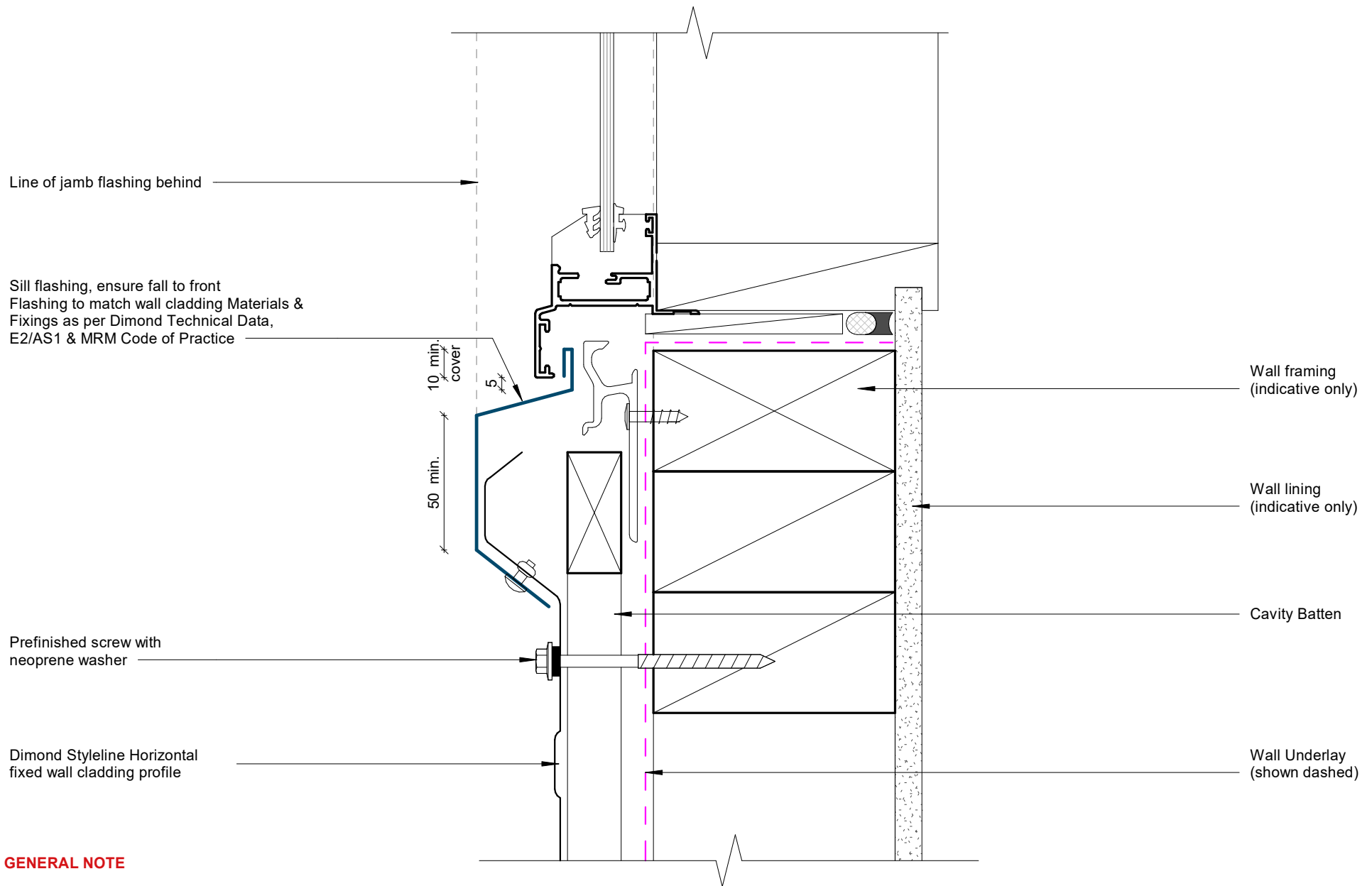
Rev: 1

Styleline Residential Horizontal Cladding



©Dimond 2023, all rights reserved. The information and specifications contained in this document are proprietary to Dimond and may not be used other than for the purpose of designing or building a roof or roofing system solely using products supplied or approved by Dimond ("Permitted Purpose"). You may copy this document solely for the Permitted Purpose, but may not otherwise copy, publish, distribute or modify this document without Dimond's prior written consent. Dimond will not be liable for any use of this document or information and specifications contained in this document, other than for the Permitted Purpose

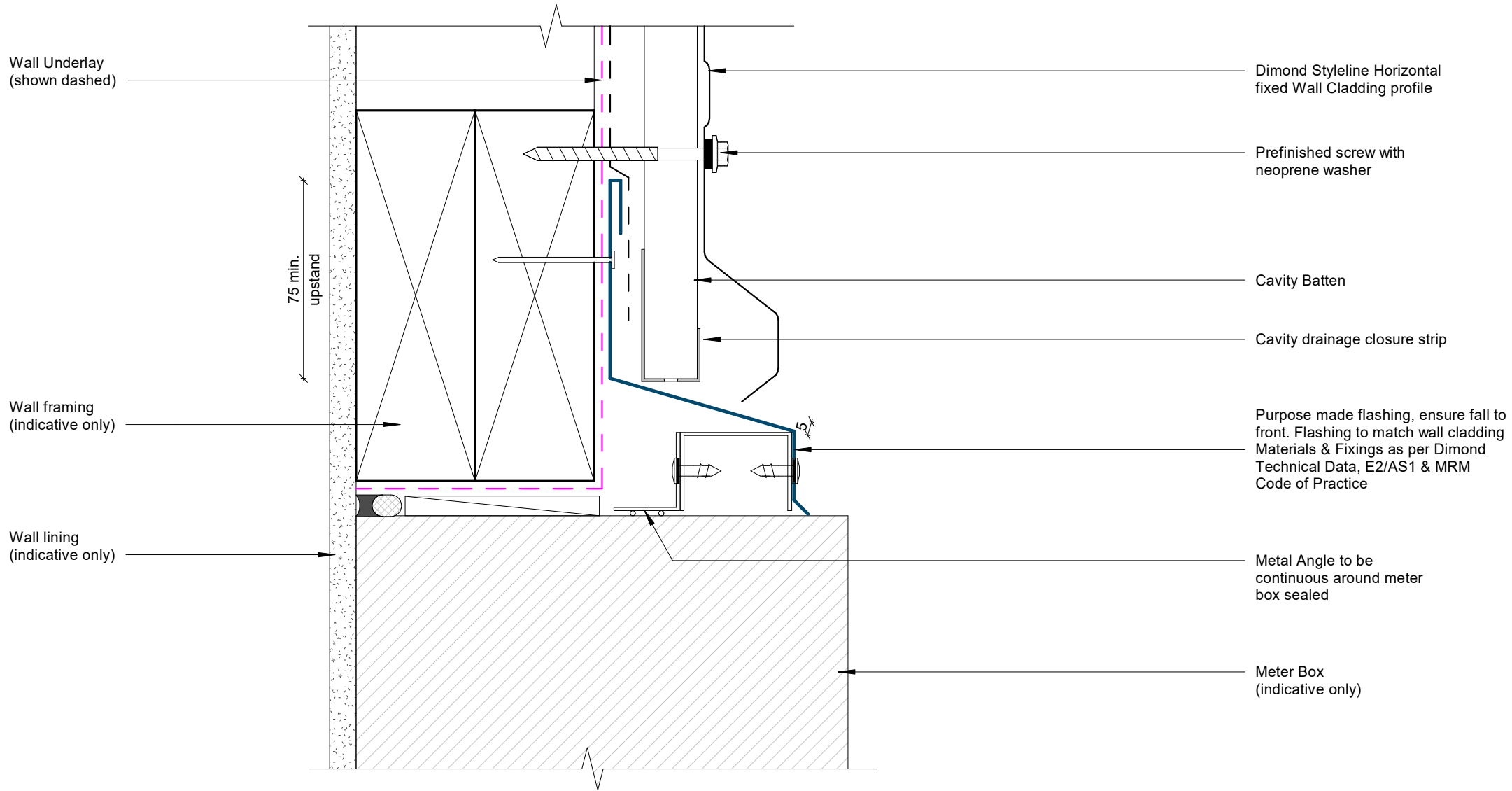
Date: July 2025 Scale: 1 : 2 Sheet: **SRHC09**



GENERAL NOTE

Cavity battens or timber framing that contain copper must be separated from steel cladding by a strip of wall or roof underlay or DPC.

Window Sill Detail



GENERAL NOTE

Cavity battens or timber framing that contain copper must be separated from steel cladding by a strip of wall underlay or DPC.

Meterbox Head Detail

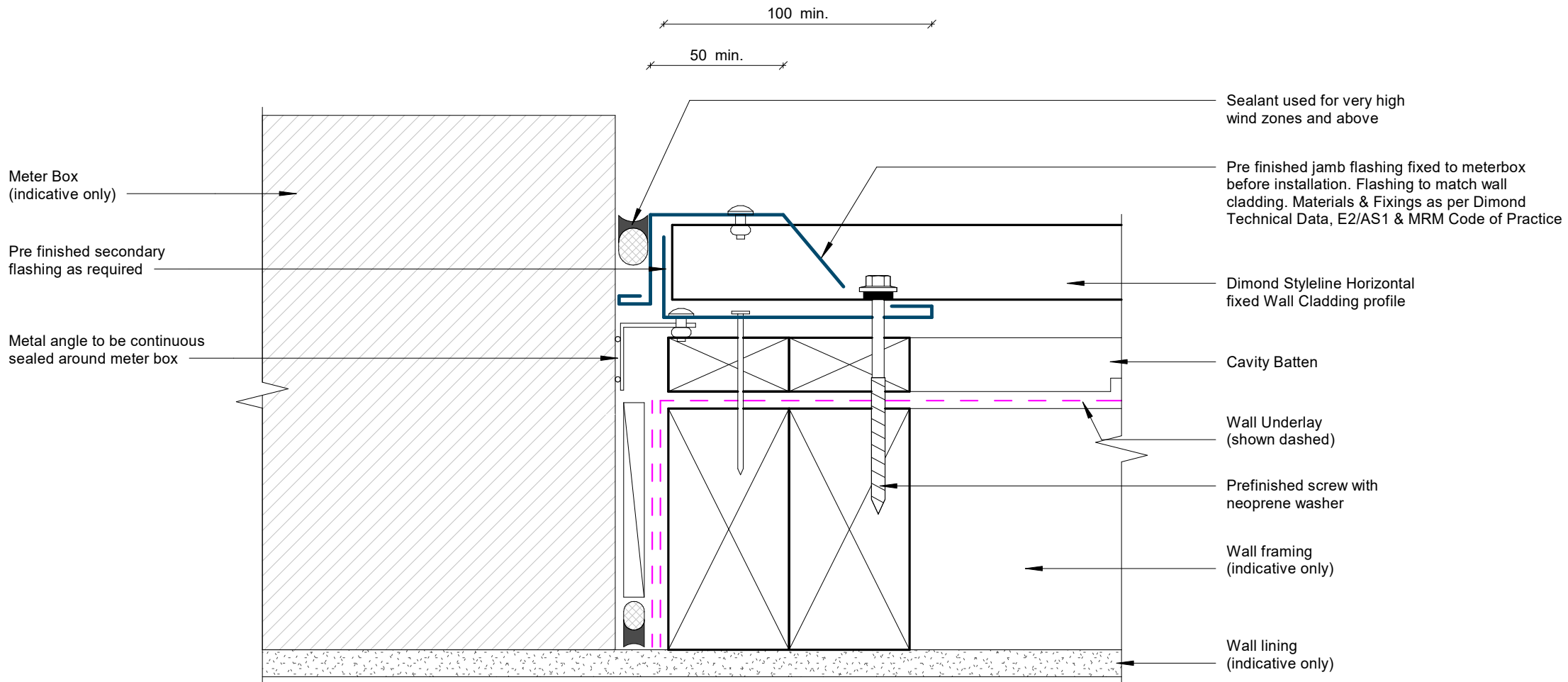
Styleline Residential Horizontal Cladding

Rev: 1



©Dimond 2023, all rights reserved. The information and specifications contained in this document are proprietary to Dimond and may not be used other than for the purpose of designing or building a roof or roofing system solely using products supplied or approved by Dimond ("Permitted Purpose"). You may copy this document solely for the Permitted Purpose, but may not otherwise copy, publish, distribute or modify this document without Dimond's prior written consent. Dimond will not be liable for any use of this document or information and specifications contained in this document, other than for the Permitted Purpose

Date: July 2025 Scale: 1 : 2 Sheet: **SRHC11**



GENERAL NOTE

Cavity battens or timber framing that contain copper must be separated from steel cladding by a strip of wall or roof underlay or DPC.

Meterbox Jamb Detail

Styleline Residential Horizontal Cladding

Rev: 1



©Dimond 2023, all rights reserved. The information and specifications contained in this document are proprietary to Dimond and may not be used other than for the purpose of designing or building a roof or roofing system solely using products supplied or approved by Dimond ("Permitted Purpose"). You may copy this document solely for the Permitted Purpose, but may not otherwise copy, publish, distribute or modify this document without Dimond's prior written consent. Dimond will not be liable for any use of this document or information and specifications contained in this document, other than for the Permitted Purpose

Date: July 2025 Scale: 1 : 2 Sheet: **SRHC12**

Meter Box
(indicative only)

Wall lining
(indicative only)

Air seal
(indicative only)

Cavity Batten

Wall framing
(indicative only)

Wall Underlay
(shown dashed)

Metal Angle to be
continuous around meter
box sealed

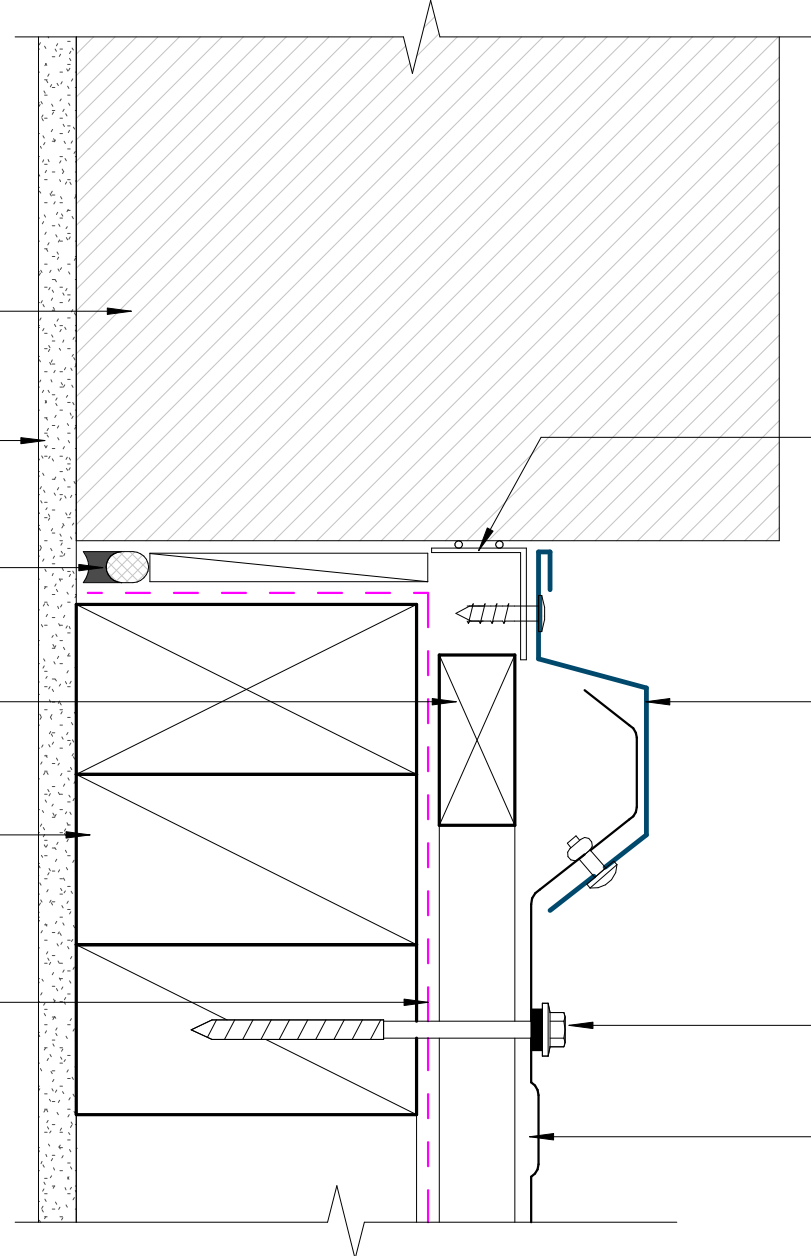
Pre finished flashing, ensure fall to
front. Flashing to match wall cladding
Materials & Fixings as per Dimond
Technical Data, E2/AS1 & MRM
Code of Practice

Prefinished screw with
neoprene washer

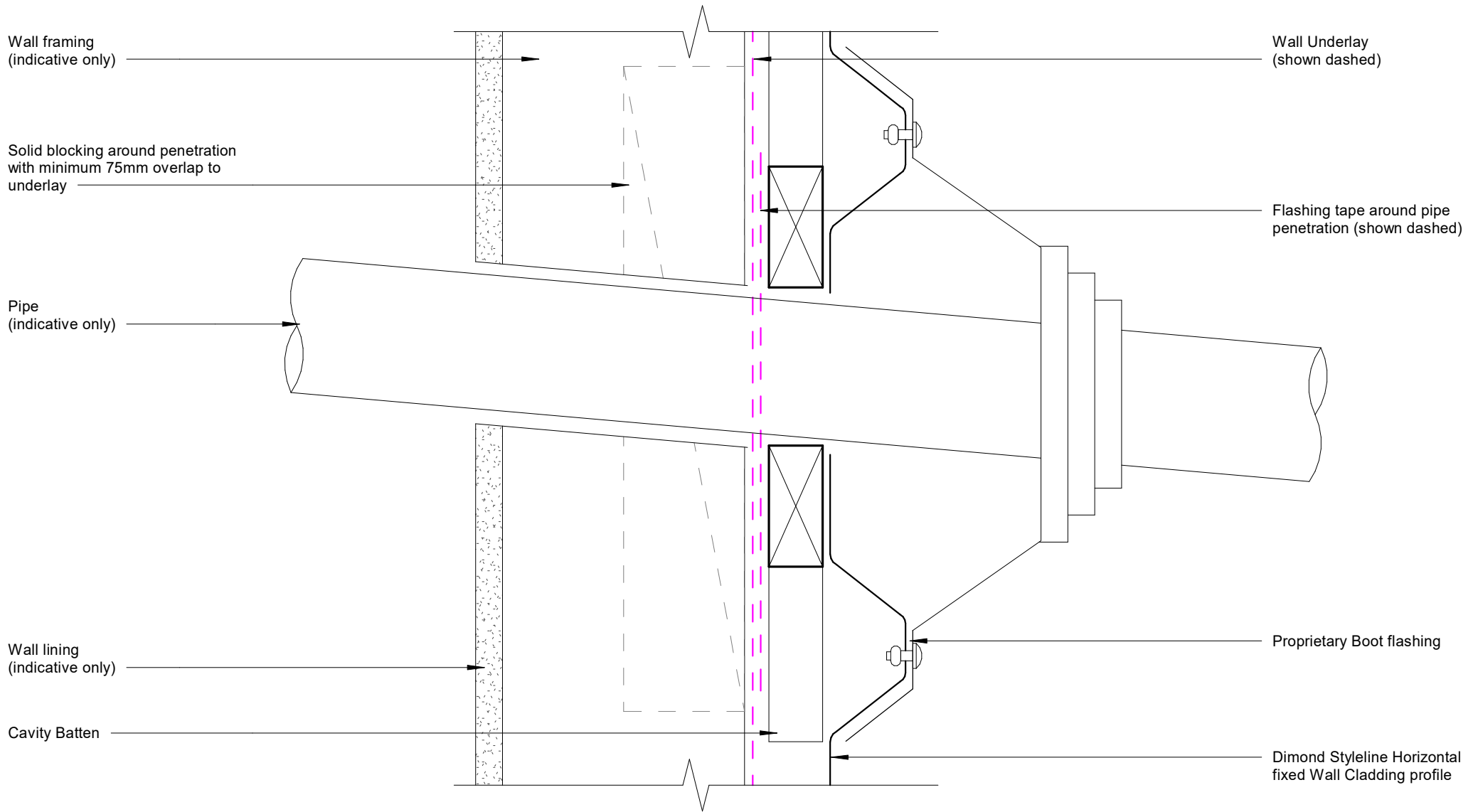
Dimond Styleline Horizontal
fixed Wall Cladding profile

GENERAL NOTE

Cavity battens or timber framing that contain copper must be separated from steel cladding by a strip of wall or roof underlay or DPC.



Meterbox Sill Detail



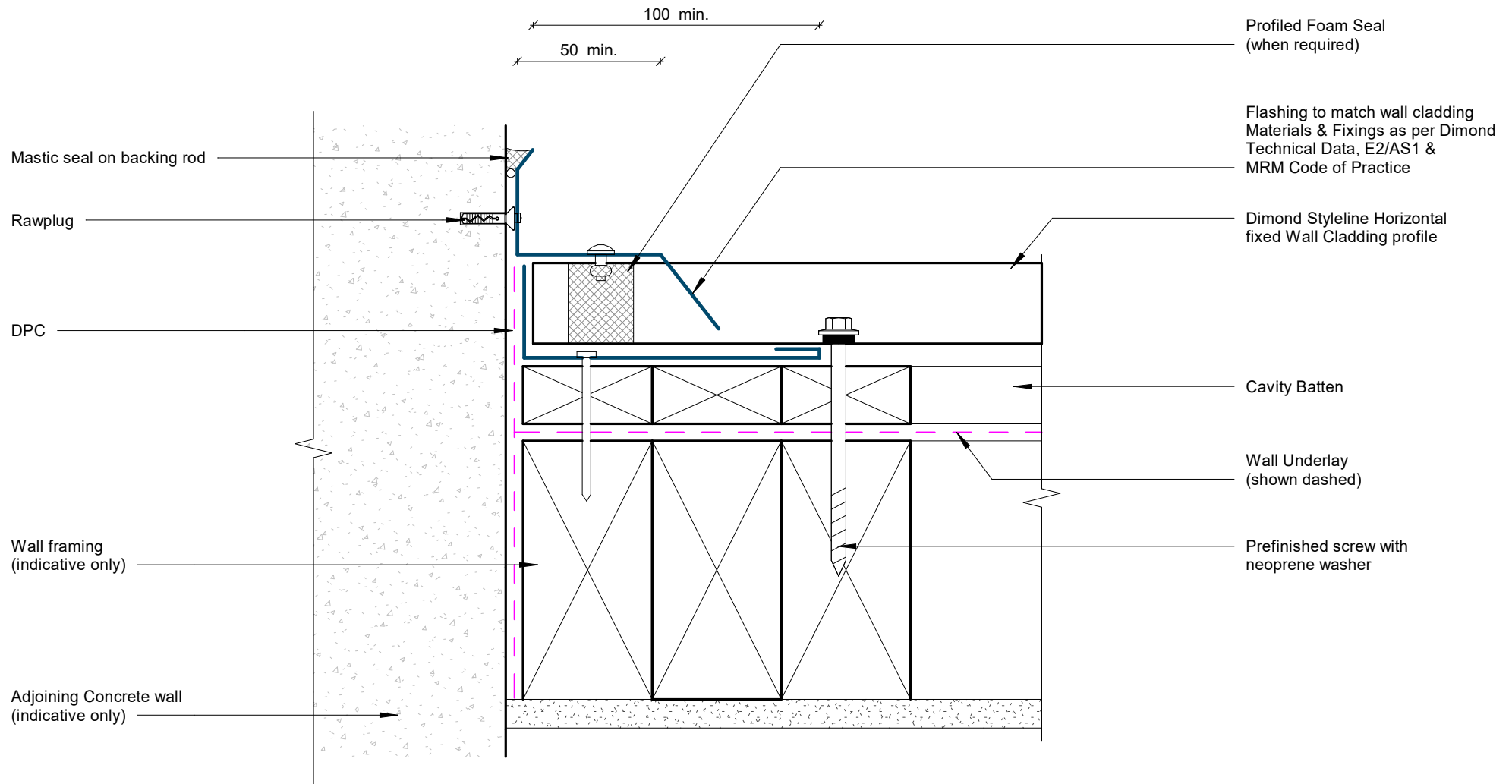
GENERAL NOTE

Cavity battens or timber framing that contain copper must be separated from steel cladding by a strip of wall or roof underlay or DPC.

Pipe Penetration Detail

Rev: 1

Styleline Residential Horizontal Cladding



GENERAL NOTE

Cavity battens or timber framing that contain copper must be separated from steel cladding by a strip of wall or roof underlay or DPC.

Cladding to Concrete Junction Detail

Rev: 1

Styleline Residential Horizontal Cladding



©Dimond 2023, all rights reserved. The information and specifications contained in this document are proprietary to Dimond and may not be used other than for the purpose of designing or building a roof or roofing system solely using products supplied or approved by Dimond ("Permitted Purpose"). You may copy this document solely for the Permitted Purpose, but may not otherwise copy, publish, distribute or modify this document without Dimond's prior written consent. Dimond will not be liable for any use of this document or information and specifications contained in this document, other than for the Permitted Purpose

Date: July 2025 Scale: 1 : 2 Sheet: **SRHC15**

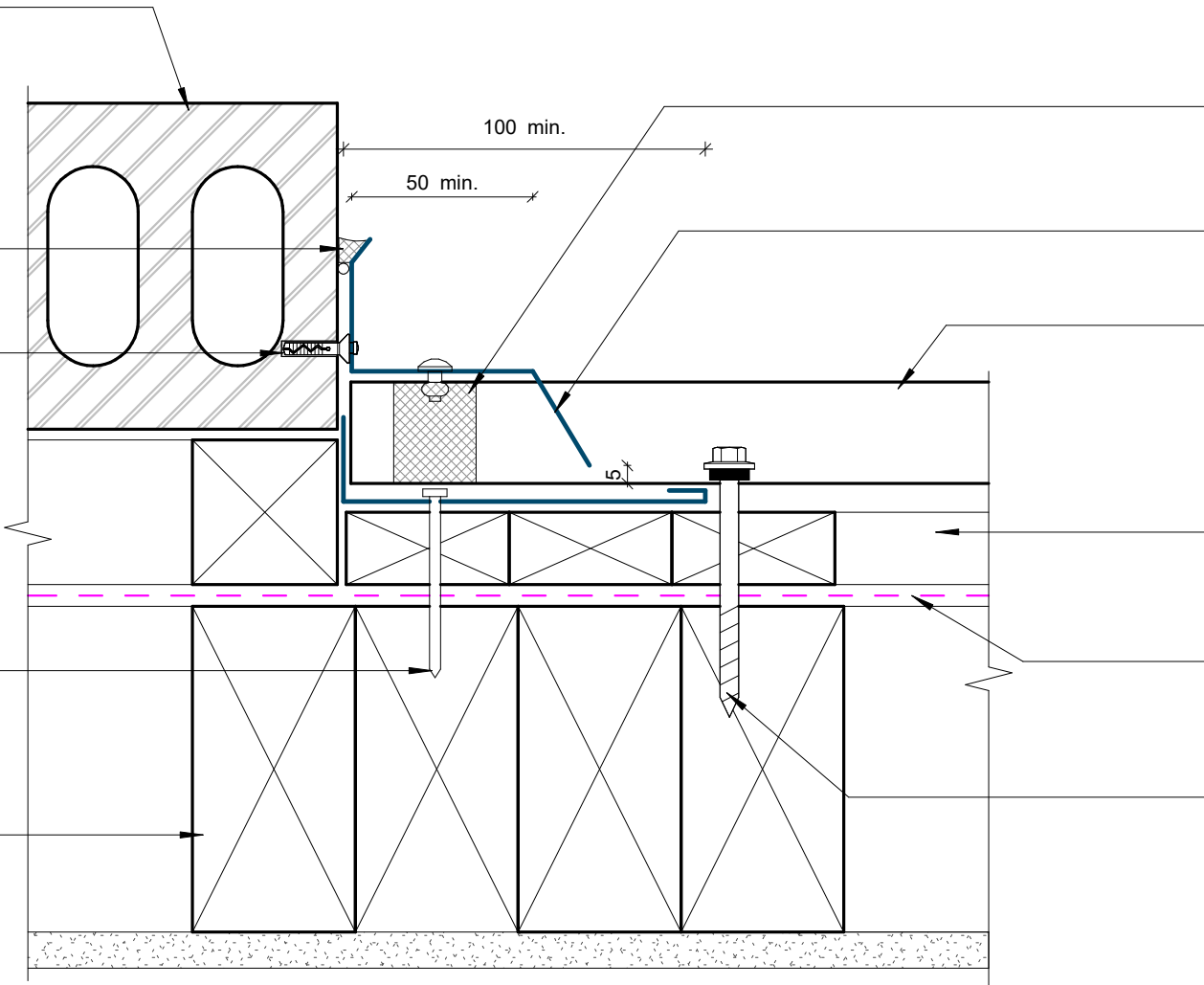
Adjoining Brick veneer on cavity
(indicative only)

Mastic seal on backing rod

Rawplug

Prefinished screw

Wall framing
(indicative only)



Profiled Foam Seal
(when required)

Flashing to match wall cladding
Materials & Fixings as per Dimond
Technical Data, E2/AS1 &
MRM Code of Practice

Dimond Styleline
Horizontal cladding

Cavity Batten

Wall Underlay
(shown dashed)

Prefinished screw with
neoprene washer

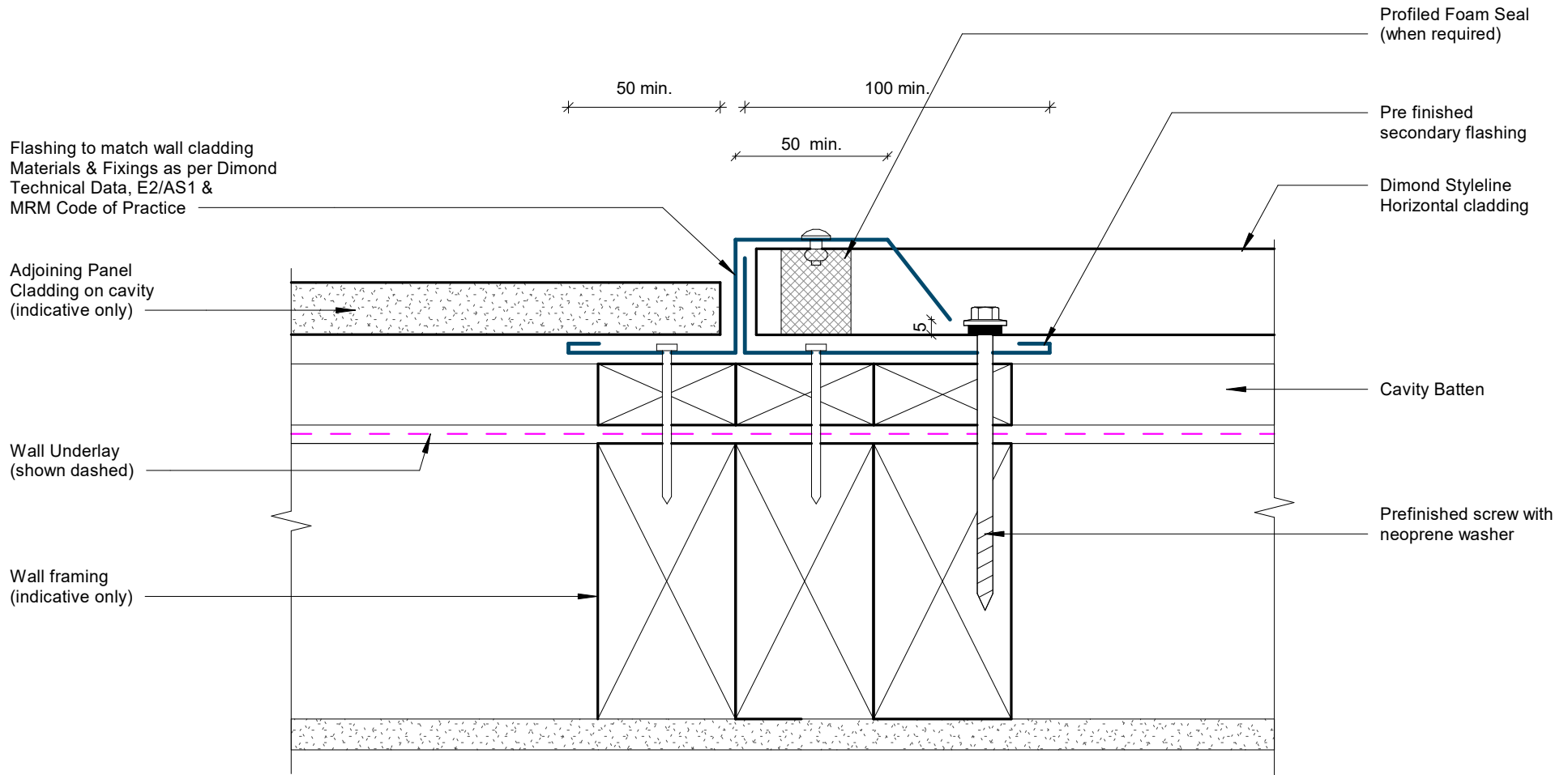
GENERAL NOTE

Cavity battens or timber framing that contain copper must be separated from steel cladding by a strip of wall or roof underlay or DPC.

Cladding to Brick Junction Detail

Rev: 1

Styleline Residential Horizontal Cladding



GENERAL NOTE

Cavity battens or timber framing that contain copper must be separated from steel cladding by a strip of wall or roof underlay or DPC.

Cladding to Panel Junction Detail

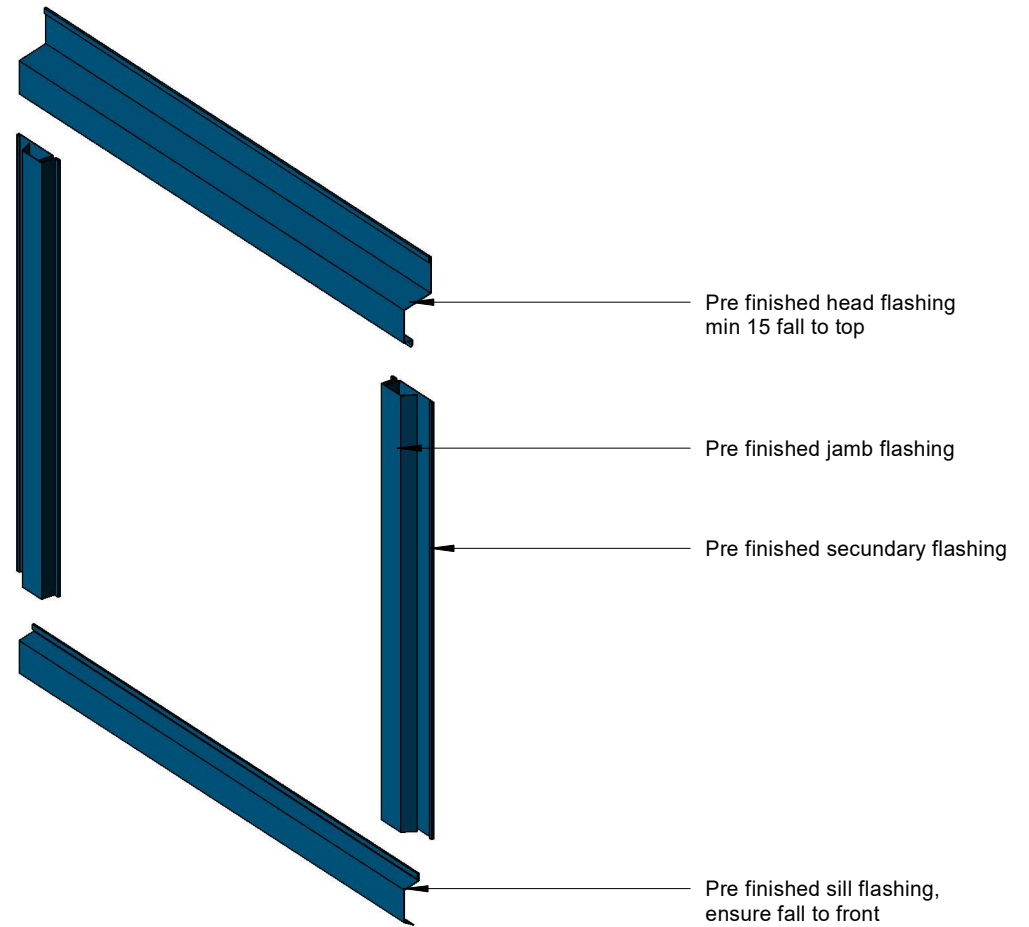
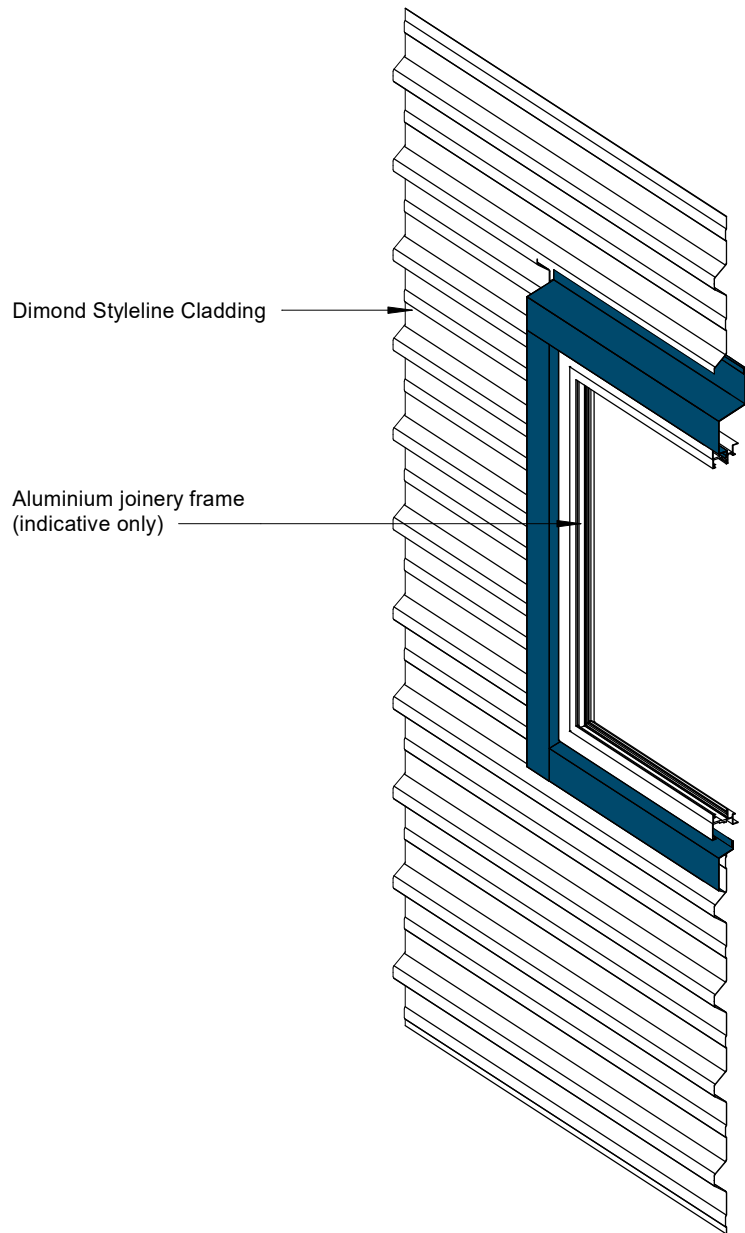
Rev: 1

Styleline Residential Horizontal Cladding



©Dimond 2023, all rights reserved. The information and specifications contained in this document are proprietary to Dimond and may not be used other than for the purpose of designing or building a roof or roofing system solely using products supplied or approved by Dimond ("Permitted Purpose"). You may copy this document solely for the Permitted Purpose, but may not otherwise copy, publish, distribute or modify this document without Dimond's prior written consent. Dimond will not be liable for any use of this document or information and specifications contained in this document, other than for the Permitted Purpose

Date: July 2025 Scale: 1 : 2 Sheet: **SRHC17**



3D Window Flashing Detail

Rev: 1 **Styleline Residential Horizontal Cladding**