

# STYLELINE

---

## COMMERCIAL HORIZONTAL WALL CLADDING

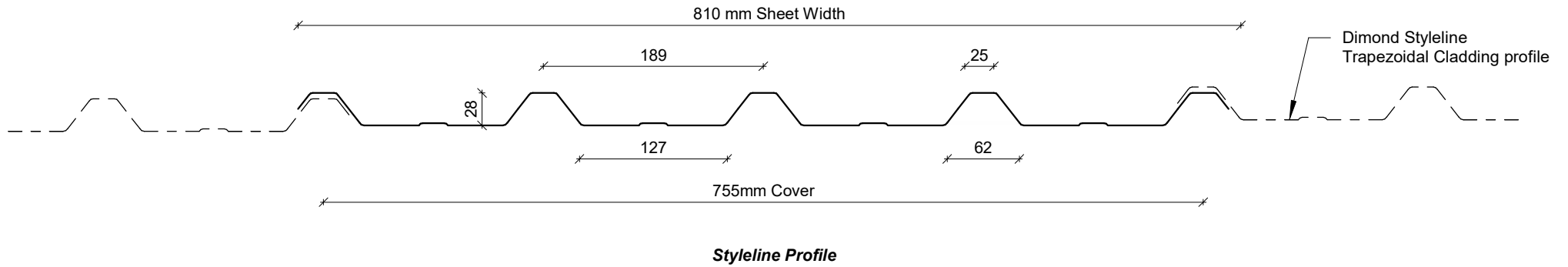
### DETAILS:

### REV:

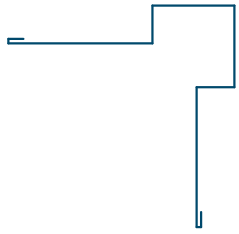
### DATE:

SCHC00	Cover Sheet	1	Oct 2025
SCHC01	Profile Summary	1	Oct 2025
SCHC02	Typical Flashing Detail	1	Oct 2025
SCHC03	Barge Detail	1	Oct 2025
SCHC04	Wall to Roof Transverse Detail	1	Oct 2025
SCHC05	Wall to Roof Detail	1	Oct 2025
SCHC06	Box Gutter Detail	1	Oct 2025
SCHC07	Wall to Roof Apex Detail	1	Oct 2025
SCHC08	External Corner Detail	1	Oct 2025
SCHC09	Internal Corner Detail	1	Oct 2025
SCHC10	Base Detail	1	Oct 2025
SCHC11	Window / Door Head Detail	1	Oct 2025
SCHC12	Window / Door Jamb Detail	1	Oct 2025
SCHC13	Window Sill Detail	1	Oct 2025

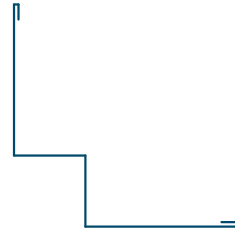
PROFILE OVERVIEW	
<b>RIB TYPE</b>	Low
<b>RIBS PER SHEET</b>	5 Ribs per sheet
<b>WIDTH</b>	755mm Cover, 810mm Sheet



## Profile Summary



External Corner Flashing



Internal Corner Flashing



Base Flashing



Window Sill Flashing



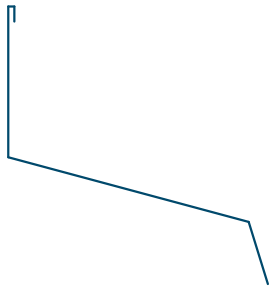
Window Head Flashing



Window Jamb Flashing



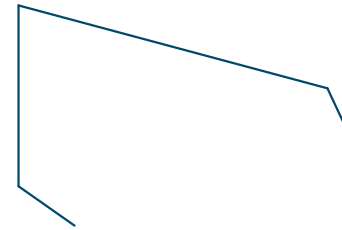
Eaves Flashing



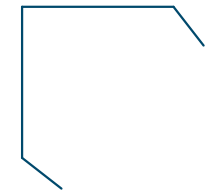
Wall to Roof Flashing 1



Wall to Roof Flashing 2



Wall Roof to Wall Apex Flashing



Barge Flashing

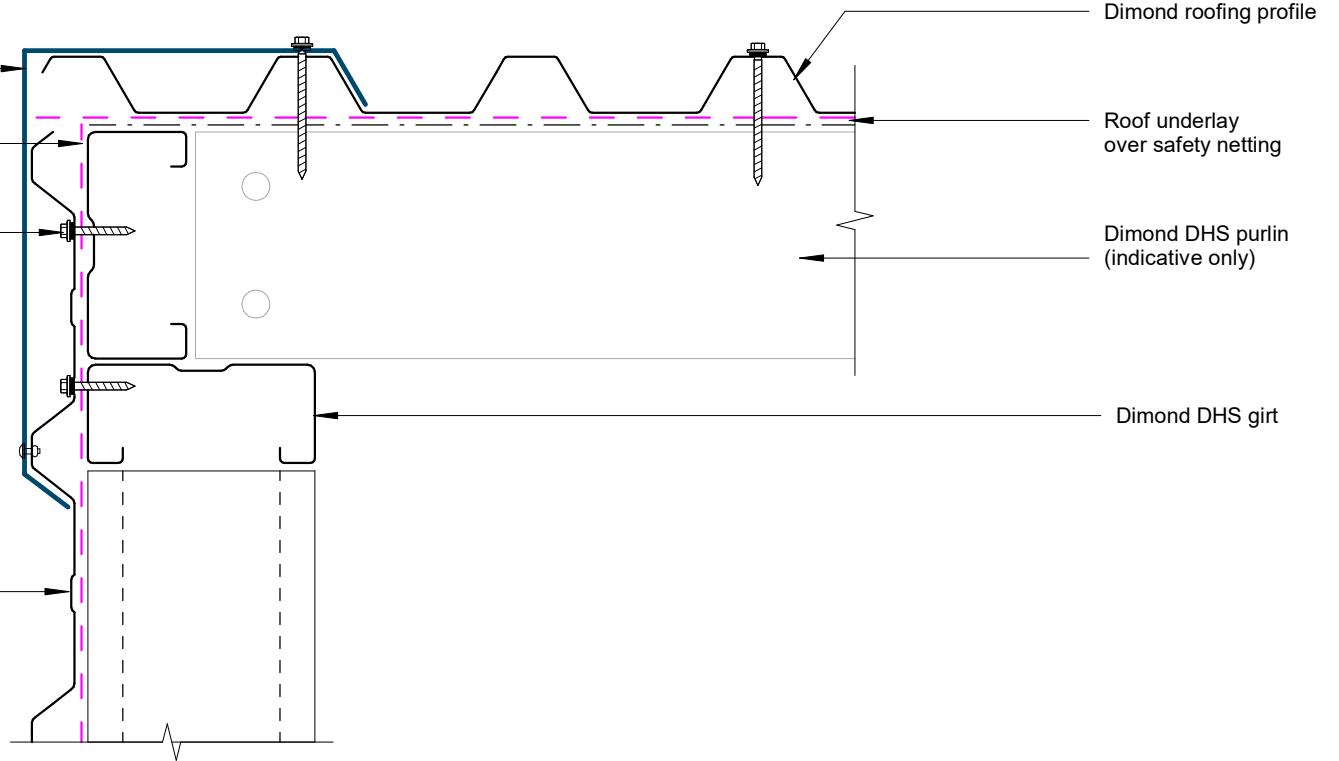
# Typical Flashing Detail

Barge flashing to match roofing.  
Materials & Fixings as per Dimond  
Technical Data & MRM Code of Practice

Wall Underlay  
(shown dashed)

Prefinished screw with  
neoprene washer

Dimond Styleline  
Trapezoidal cladding



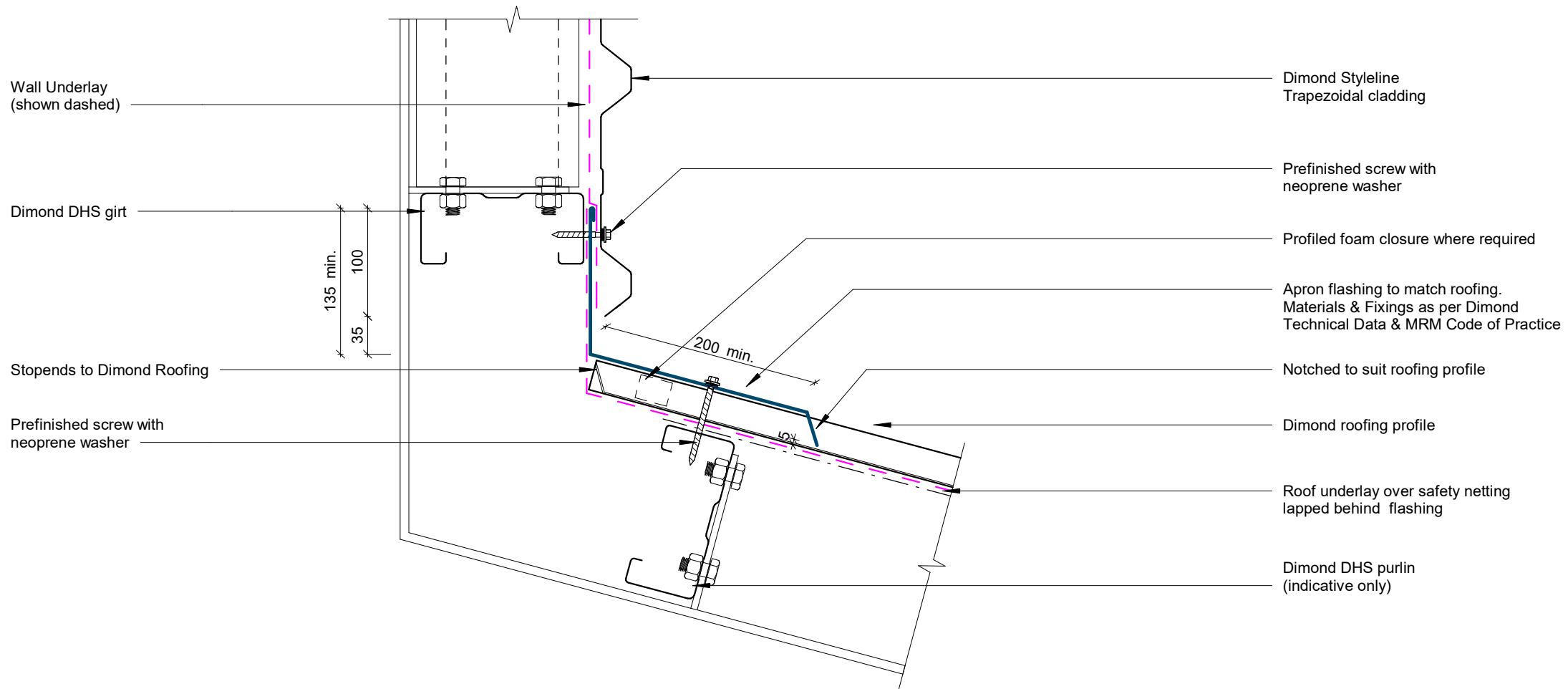
Dimond roofing profile

Roof underlay  
over safety netting

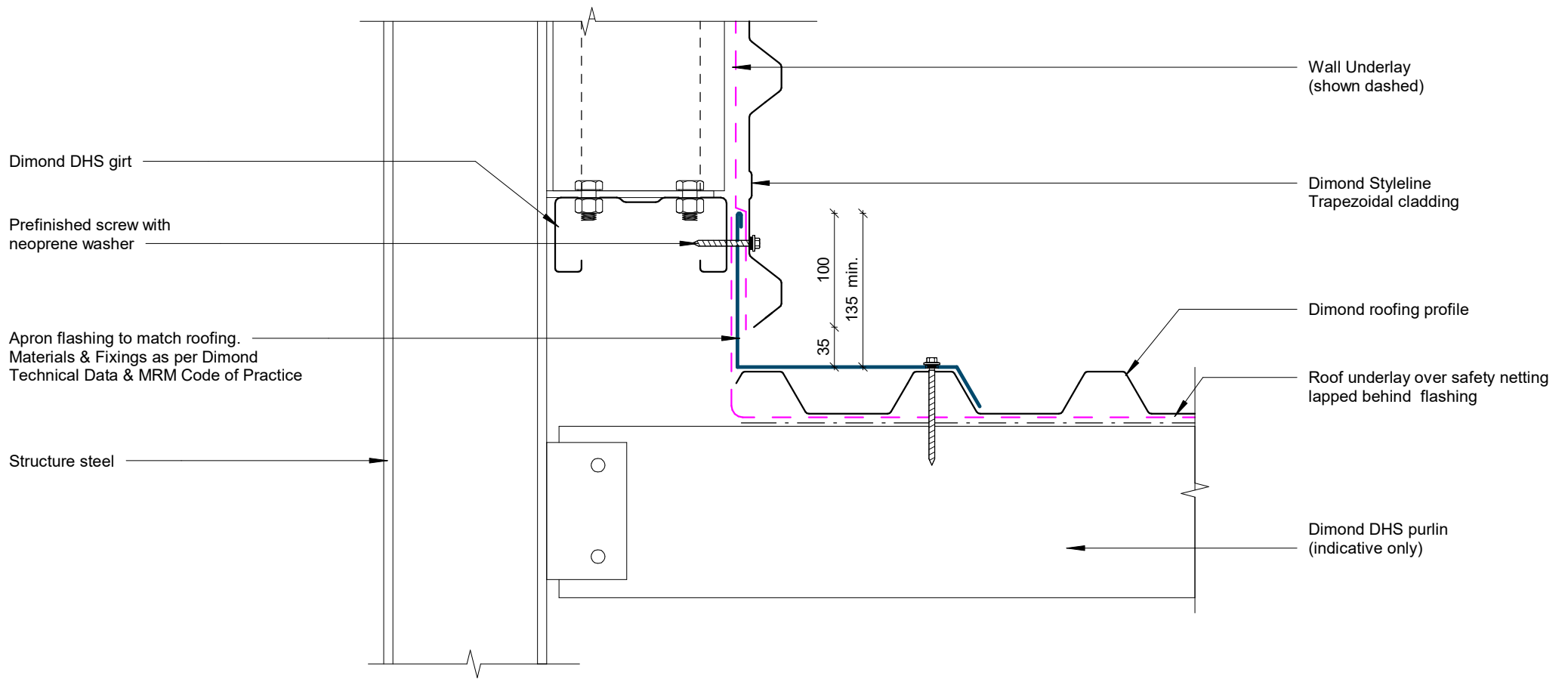
Dimond DHS purlin  
(indicative only)

Dimond DHS girt

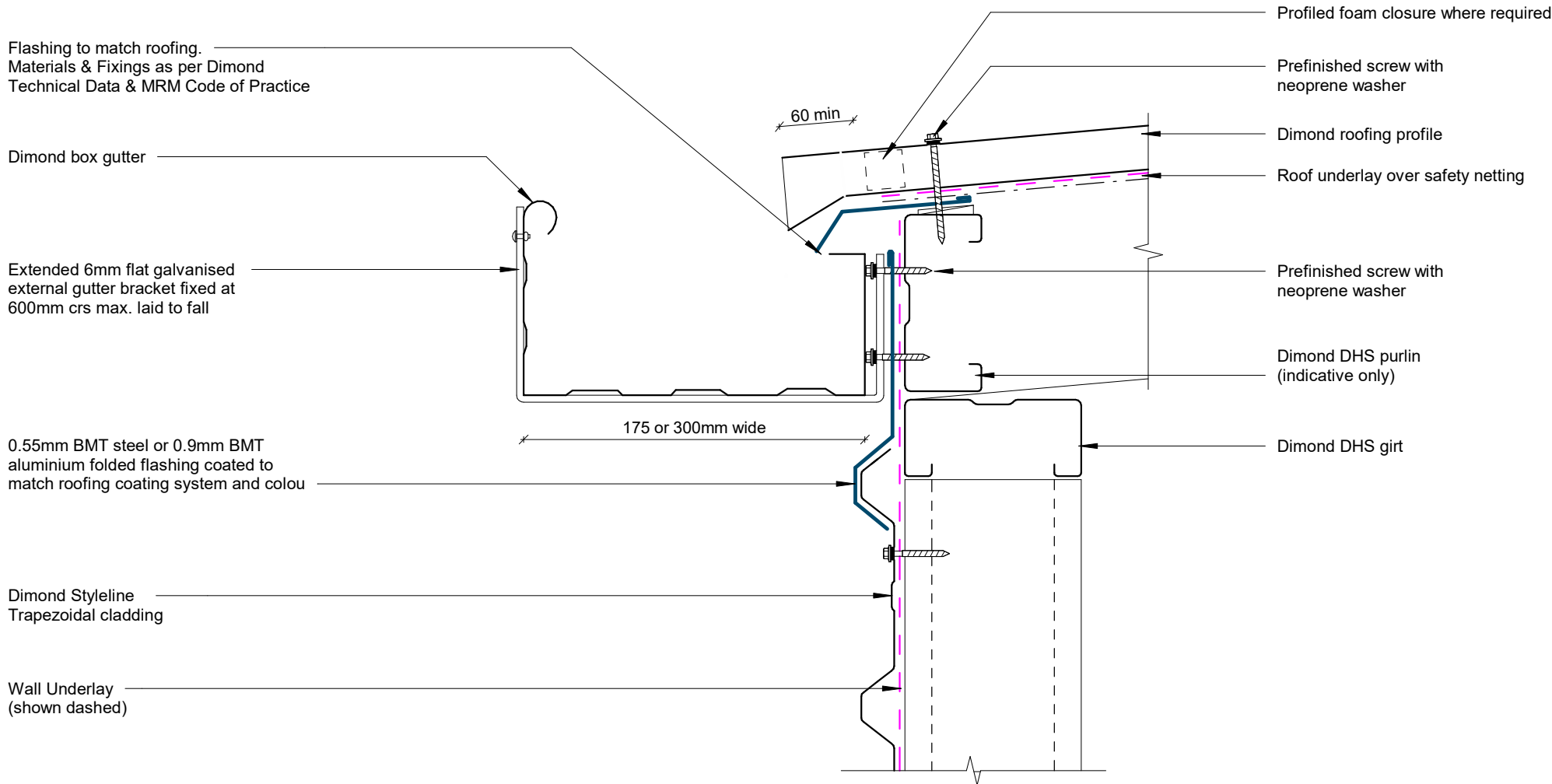
## Barge Detail



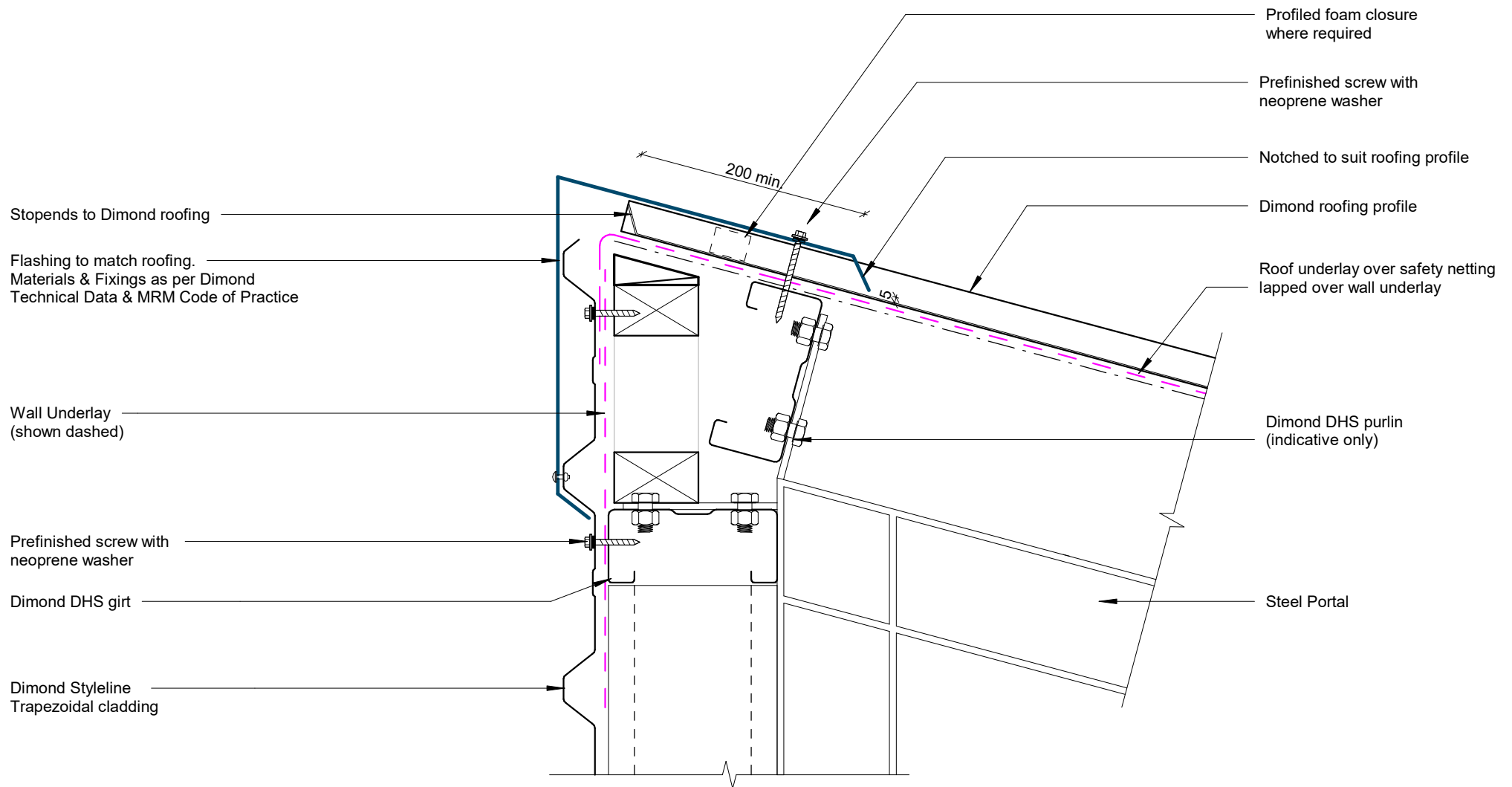
## Wall to Roof Transverse Detail



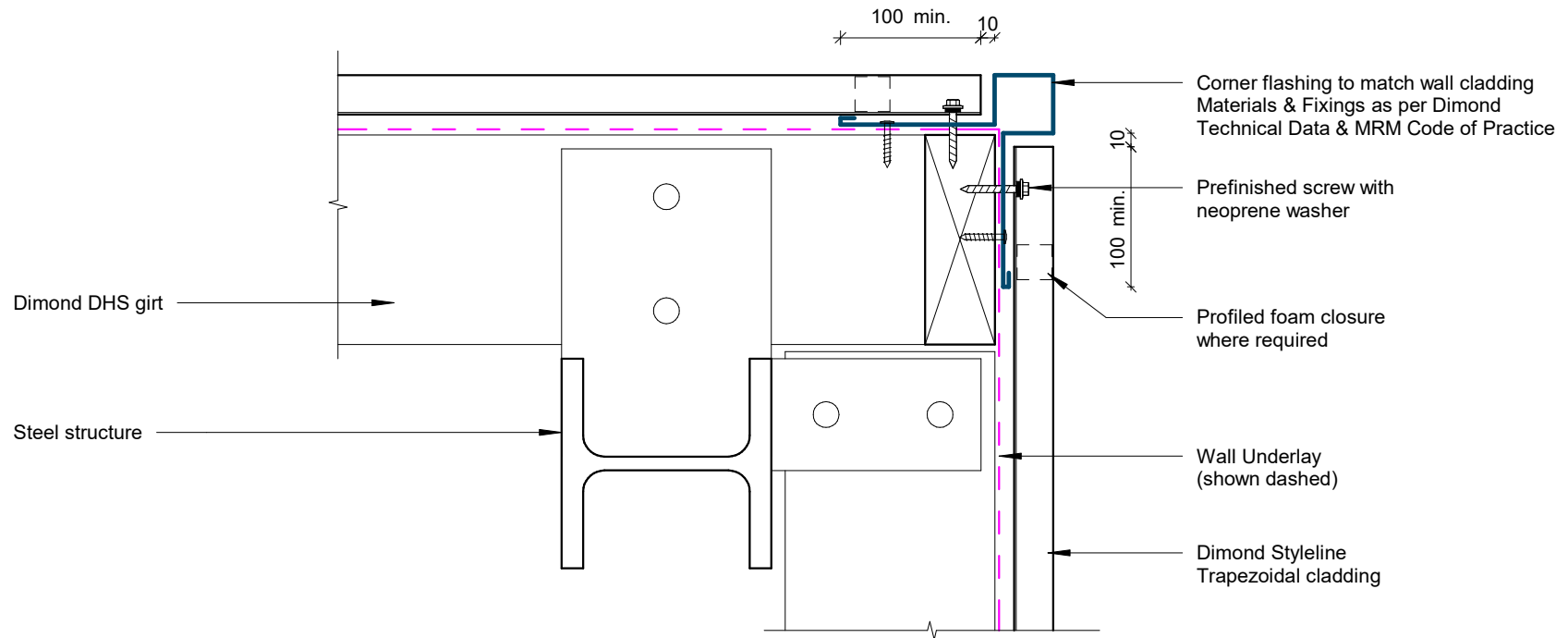
## Wall to Roof Detail



## Box Gutter Detail



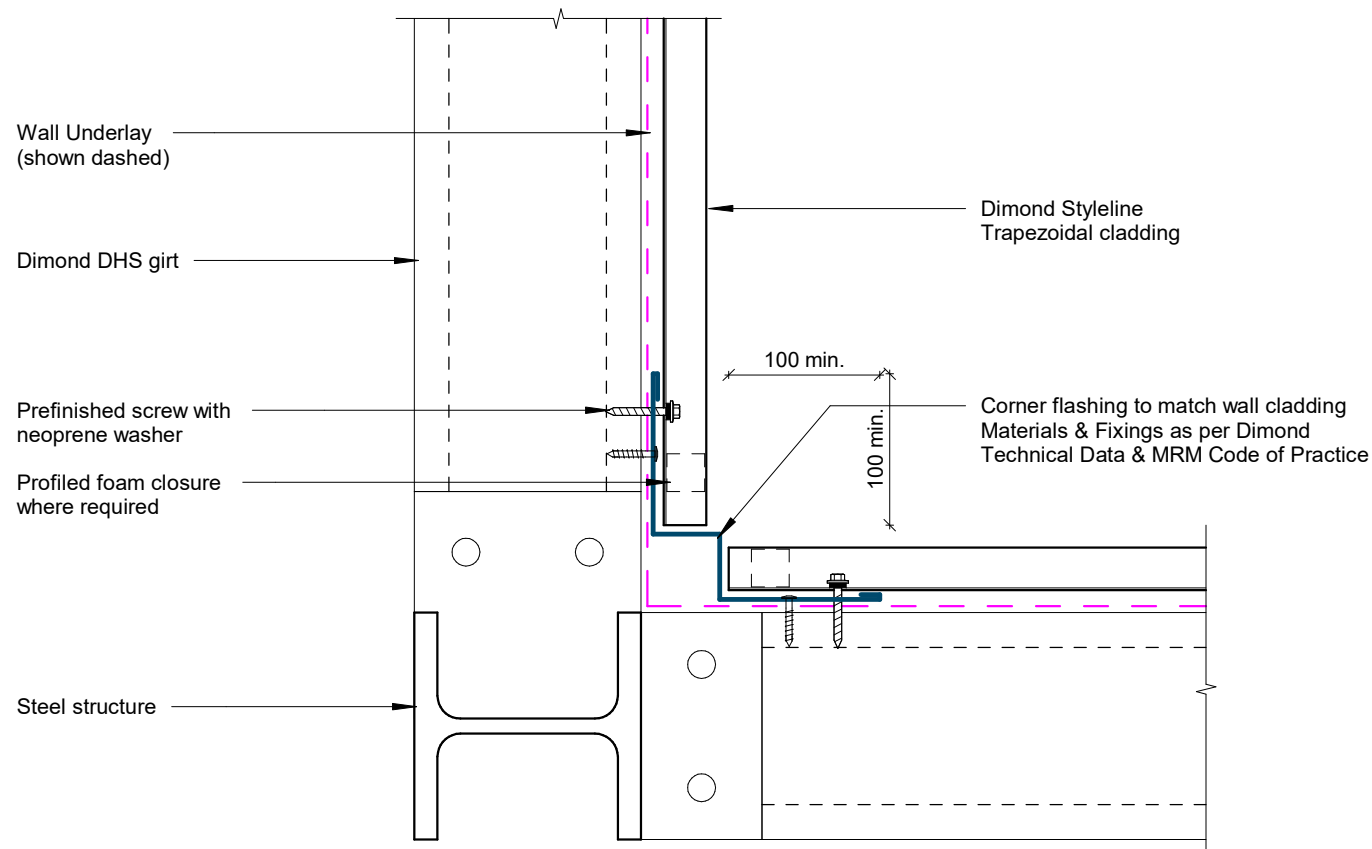
## Wall to Roof Apex Detail



## External Corner Detail

### Styleline Commercial Horizontal Cladding

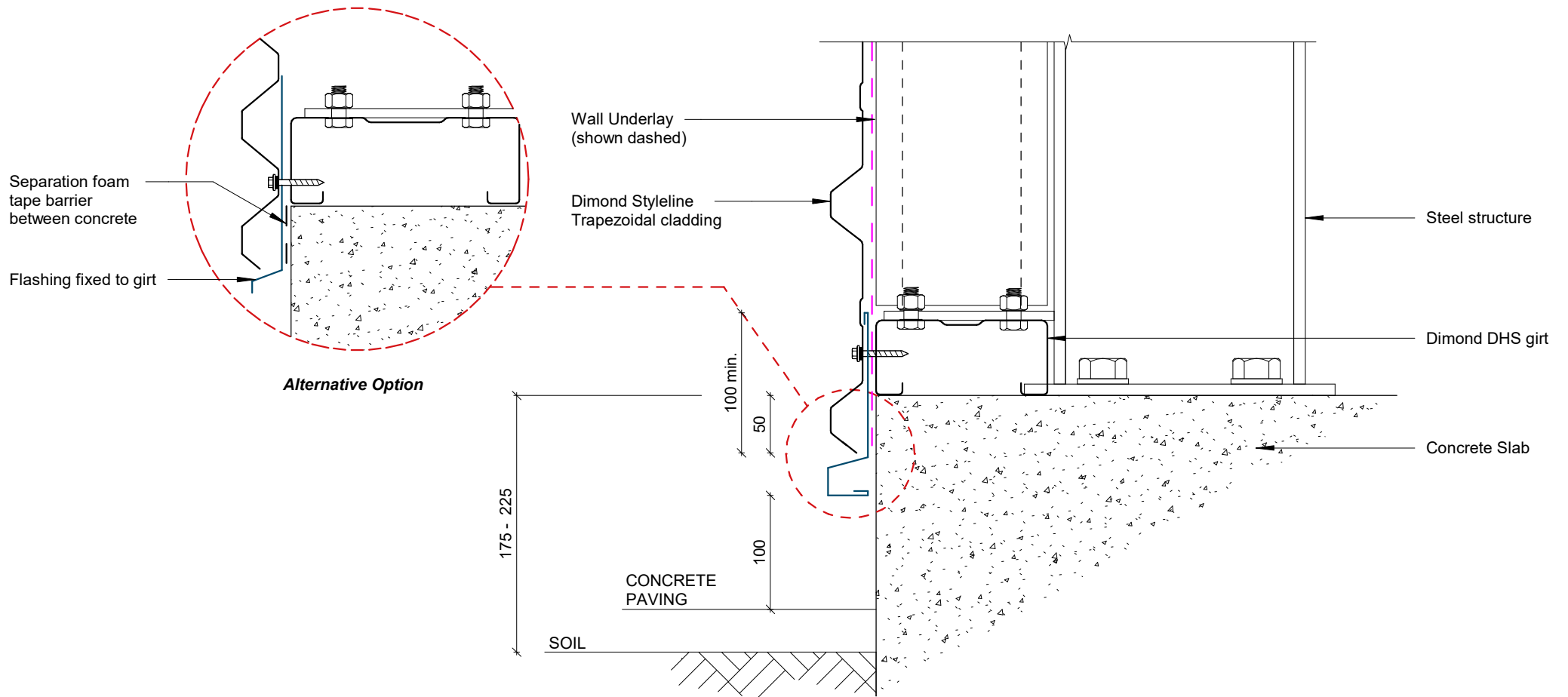
Rev: 1



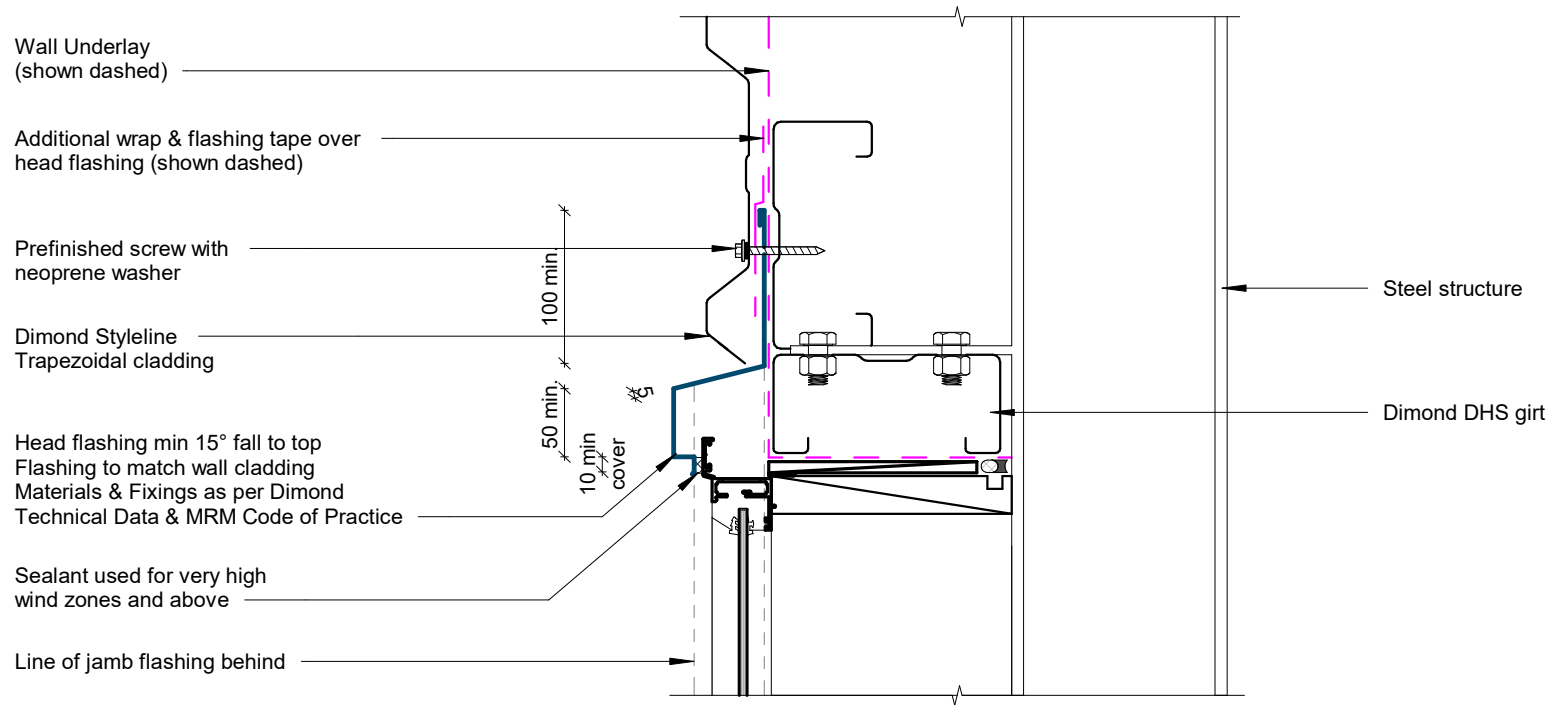
## Internal Corner Detail

Rev: 1

Styleline Commercial Horizontal Cladding



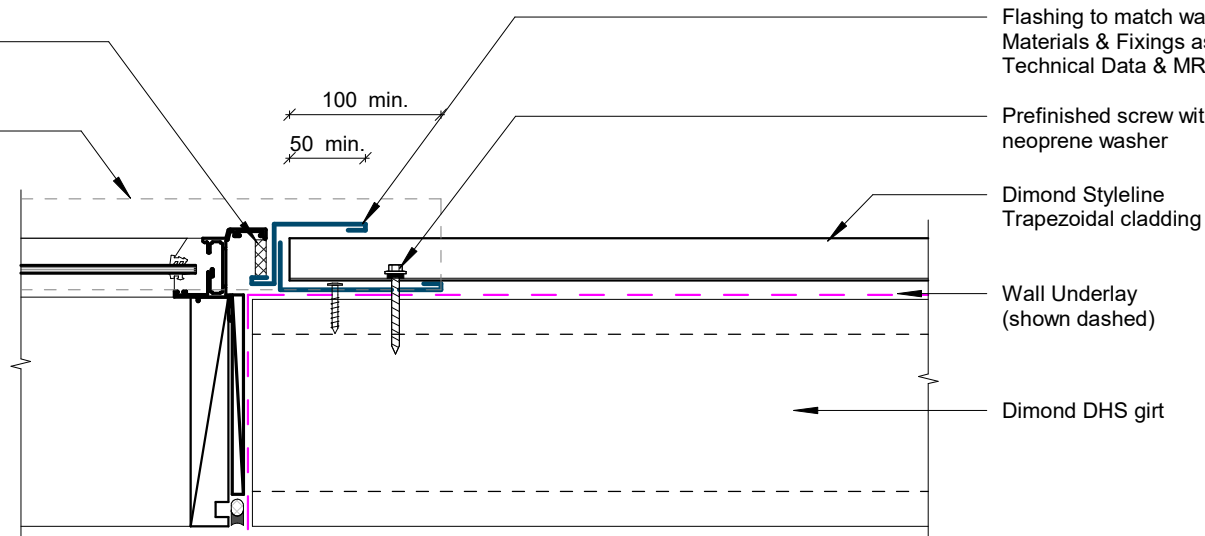
## Base Detail



## Window / Door Head Detail

Sealant used for very high  
wind zones and above

Line of head flashing over



Flashing to match wall cladding  
Materials & Fixings as per Dimond  
Technical Data & MRM Code of Practice

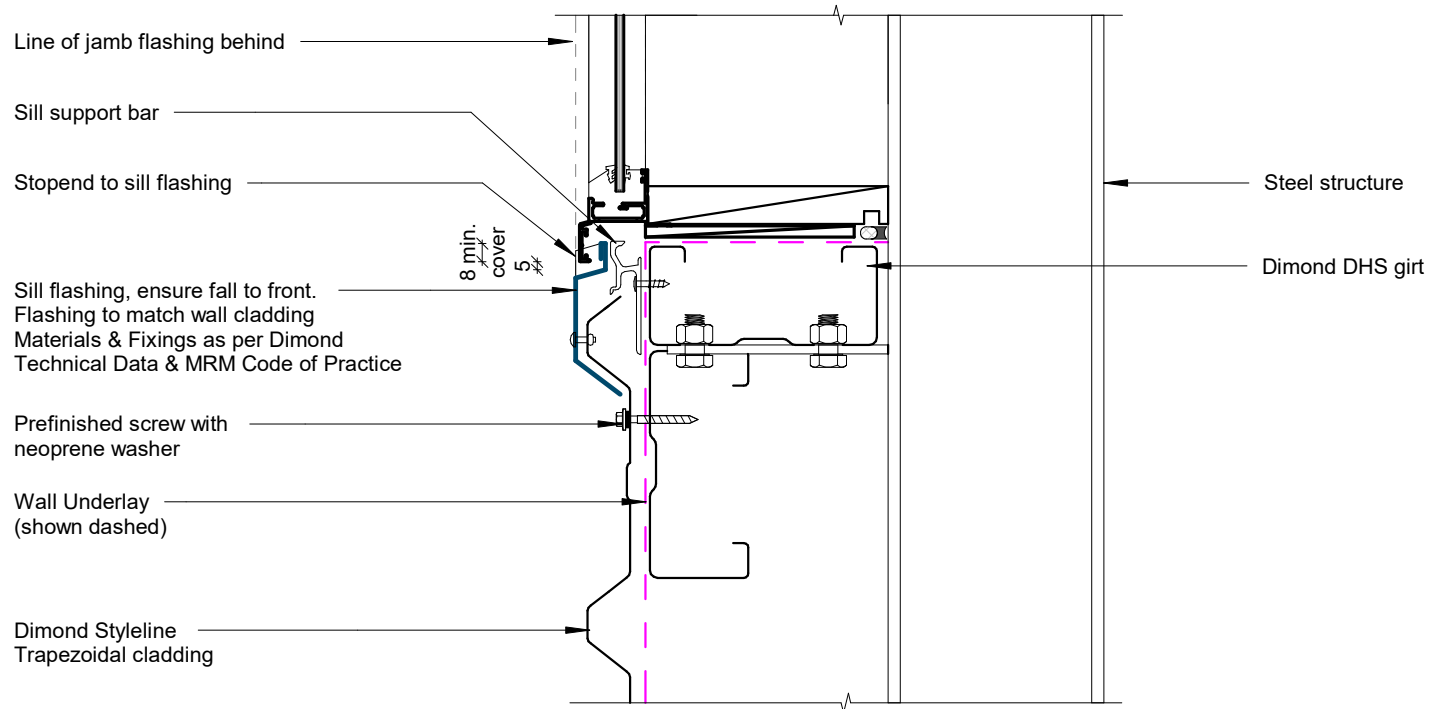
Prefinished screw with  
neoprene washer

Dimond Styleline  
Trapezoidal cladding

Wall Underlay  
(shown dashed)

Dimond DHS girt

## Window / Door Jamb Detail



## Window Sill Detail