

SIX-RIB

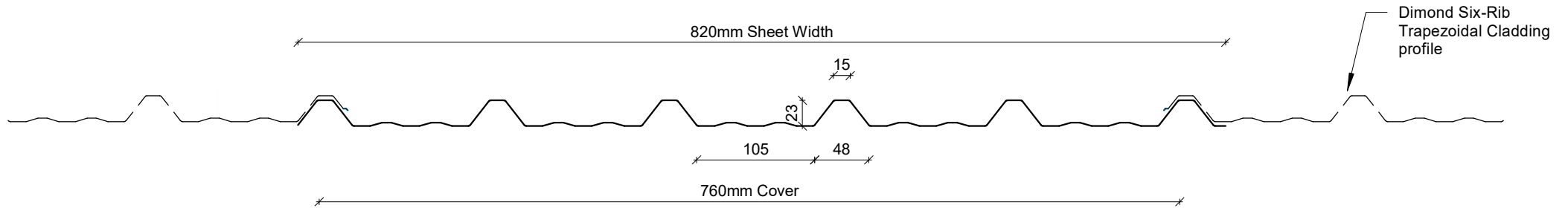
RESIDENTIAL VERTICAL WALL CLADDING

DETAILS:

REV: DATE:

6RRVC00	Cover Sheet	1	Jun 2025
6RRVC01	Profile Summary	1	Jun 2025
6RRVC02	Typical Flashing Detail	1	Jun 2025
6RRVC03	Barge Flashing Detail	1	Jun 2025
6RRVC04	Transverse Junction Detail	1	Jun 2025
6RRVC05	External Corner Detail	1	Jun 2025
6RRVC06	Internal Corner Detail	1	Jun 2025
6RRVC07	Base Detail	1	Jun 2025
6RRVC08	Soffit Detail	1	Jun 2025
6RRVC09	Window Head Detail	1	Jun 2025
6RRVC10	Window Jamb Detail	1	Jun 2025
6RRVC11	Window Sill Detail	1	Jun 2025
6RRVC12	Meterbox Head Detail	1	Jun 2025
6RRVC13	Meterbox Jamb Detail	1	Jun 2025
6RRVC14	Meterbox Sill Detail	1	Jun 2025
6RRVC15	Pipe Penetration Detail	1	Jun 2025
6RRVC16	Cladding to Concrete Junction Detail	1	Jun 2025
6RRVC17	Cladding to Brick Junction Detail	1	Jun 2025
6RRVC18	Cladding to Panel Junction Detail	1	Jun 2025
6RRVC19	3D Window Flashing Detail	1	Jun 2025

PROFILE OVERVIEW	
MINIMUM PITCH	4°
RIB TYPE	Low
RIBS PER SHEET	6 Ribs per sheet
WIDTH	760mm Cover, 820mm Sheet



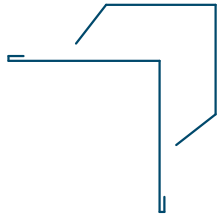
Profile Summary

Rev: 1 Six Rib Residential Vertical Cladding

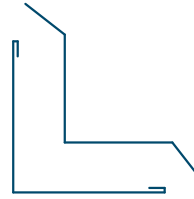


©Dimond 2023, all rights reserved. The information and specifications contained in this document are proprietary to Dimond and may not be used other than for the purpose of designing or building a roof or roofing system solely using products supplied or approved by Dimond ("Permitted Purpose"). You may copy this document solely for the Permitted Purpose, but may not otherwise copy, publish, distribute or modify this document without Dimond's prior written consent. Dimond will not be liable for any use of this document or information and specifications contained in this document, other than for the Permitted Purpose

Date: Jun 2025 Scale: 1 : 5 Sheet: 6RRVC01



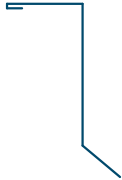
External Corner Flashing



Internal Corner Flashing



Base Flashing



Soffit Flashing



Window Head Flashing



Window Jamb Flashing



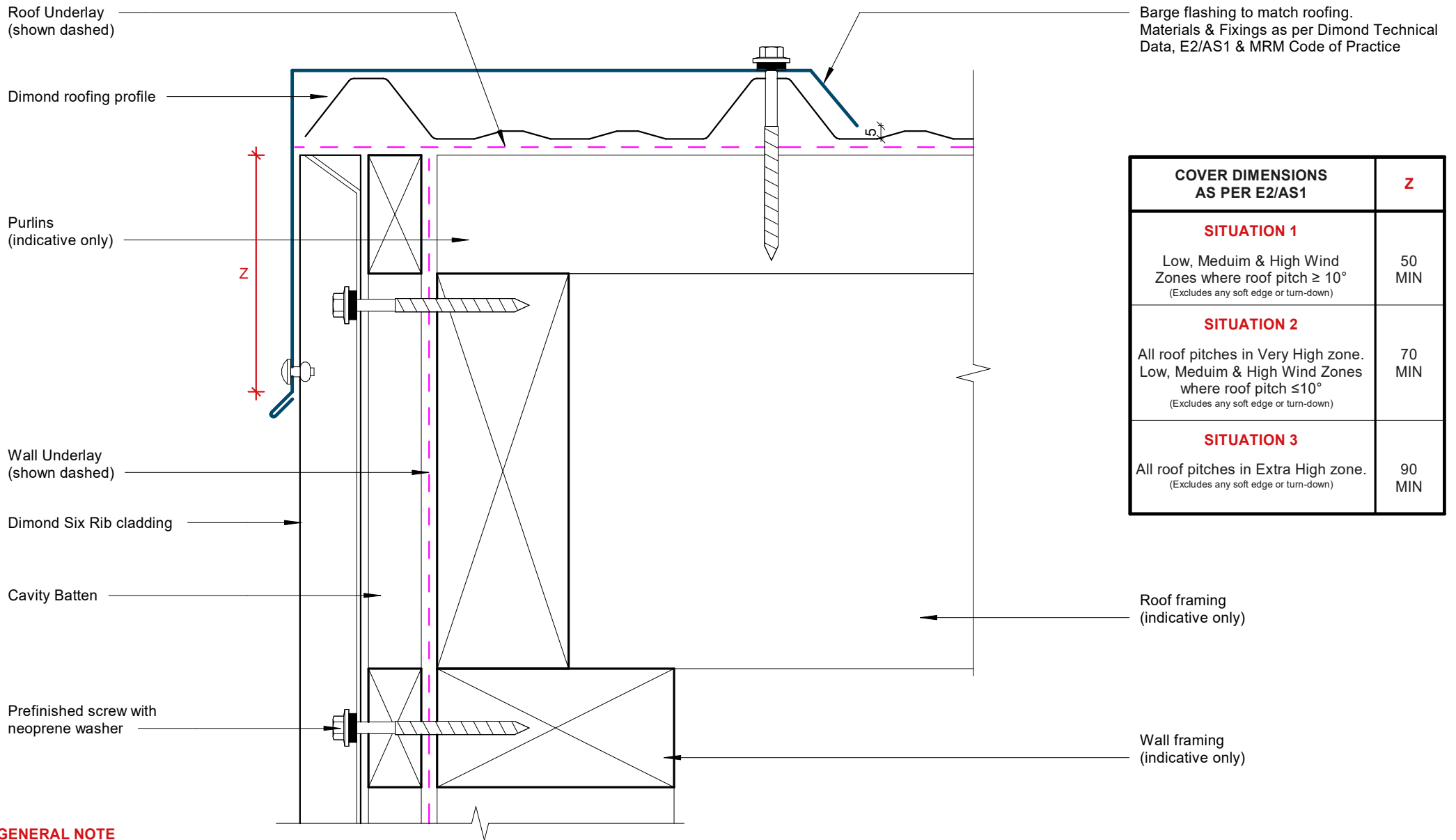
Window Sill Flashing



Transverse Flashing

Typical Flashing Detail

Rev: 1 **Six Rib Residential Vertical Cladding**

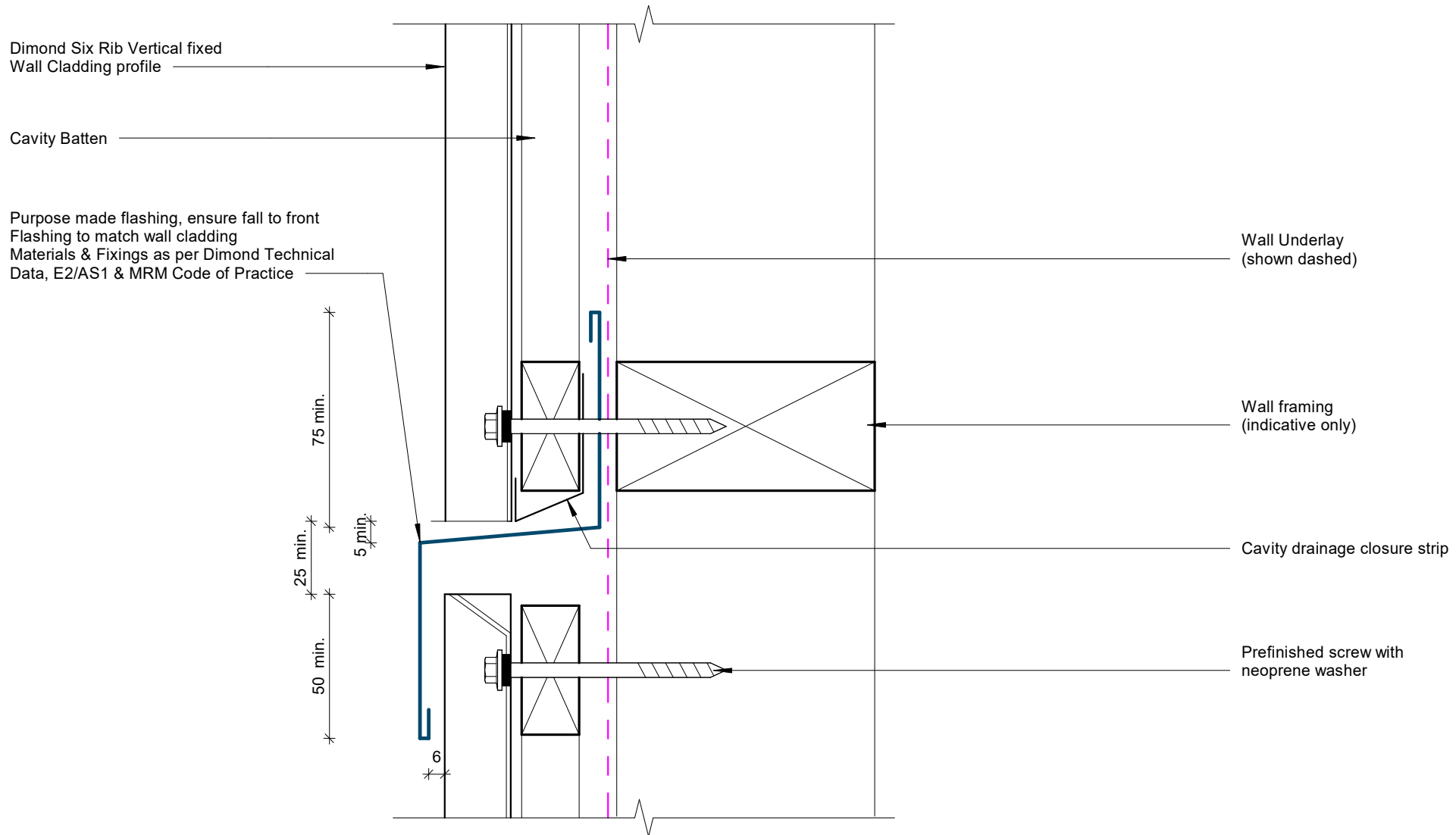


COVER DIMENSIONS AS PER E2/AS1	Z
SITUATION 1 Low, Medium & High Wind Zones where roof pitch $\geq 10^\circ$ (Excludes any soft edge or turn-down)	50 MIN
SITUATION 2 All roof pitches in Very High zone. Low, Medium & High Wind Zones where roof pitch $\leq 10^\circ$ (Excludes any soft edge or turn-down)	70 MIN
SITUATION 3 All roof pitches in Extra High zone. (Excludes any soft edge or turn-down)	90 MIN

GENERAL NOTE

Cavity battens or timber framing that contain copper must be separated from steel cladding by a strip of wall or roof underlay or DPC.

Barge Flashing Detail

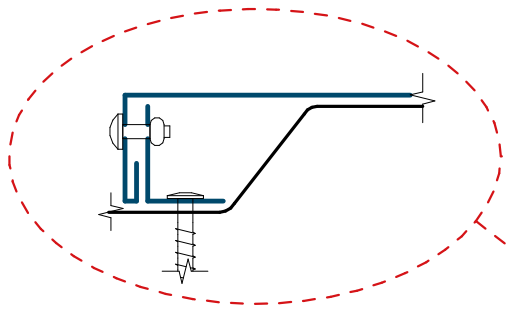


GENERAL NOTE

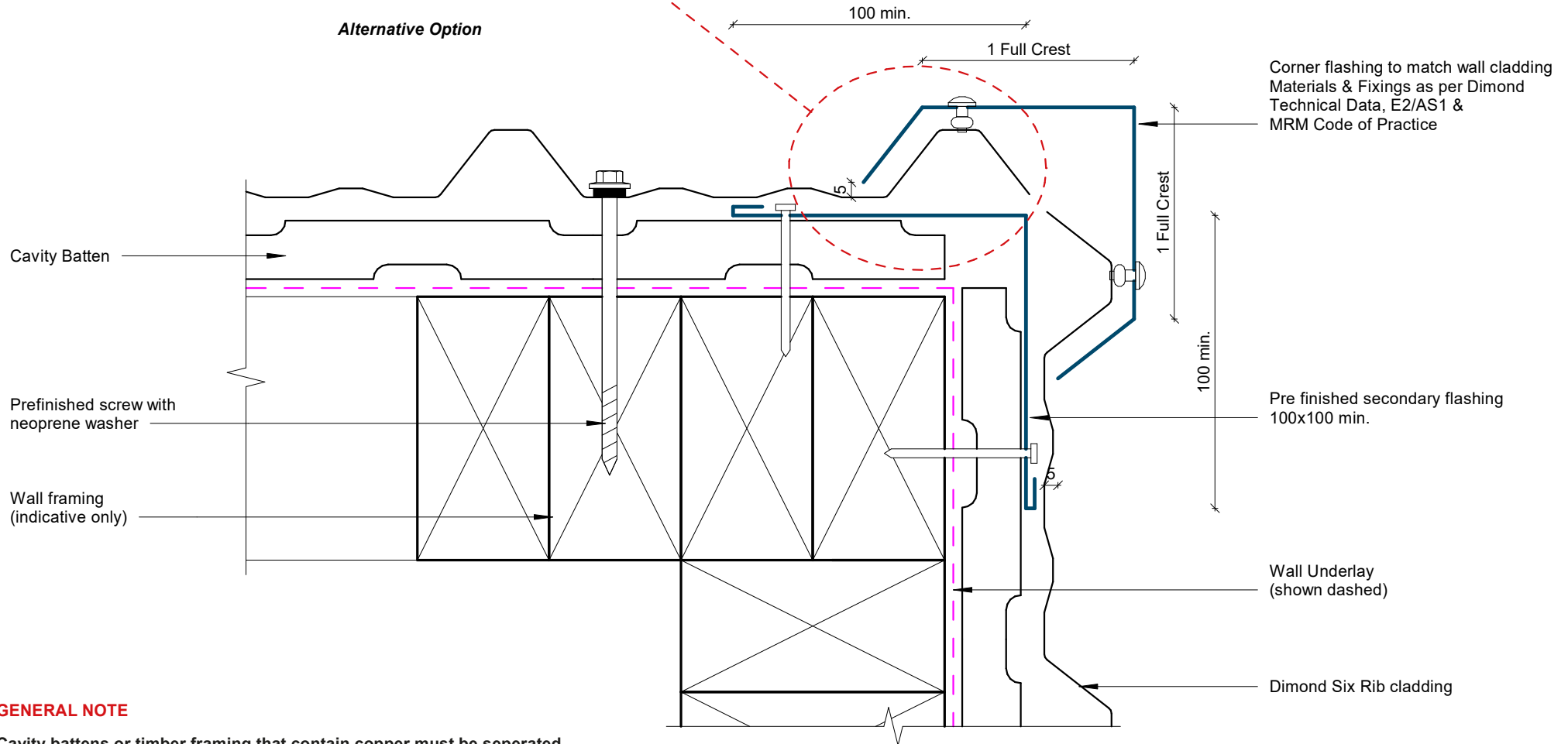
Cavity battens or timber framing that contain copper must be separated from steel cladding by a strip of wall or roof underlay or DPC.

Transverse Junction Detail

Rev: 1 Six Rib Residential Vertical Cladding



Alternative Option

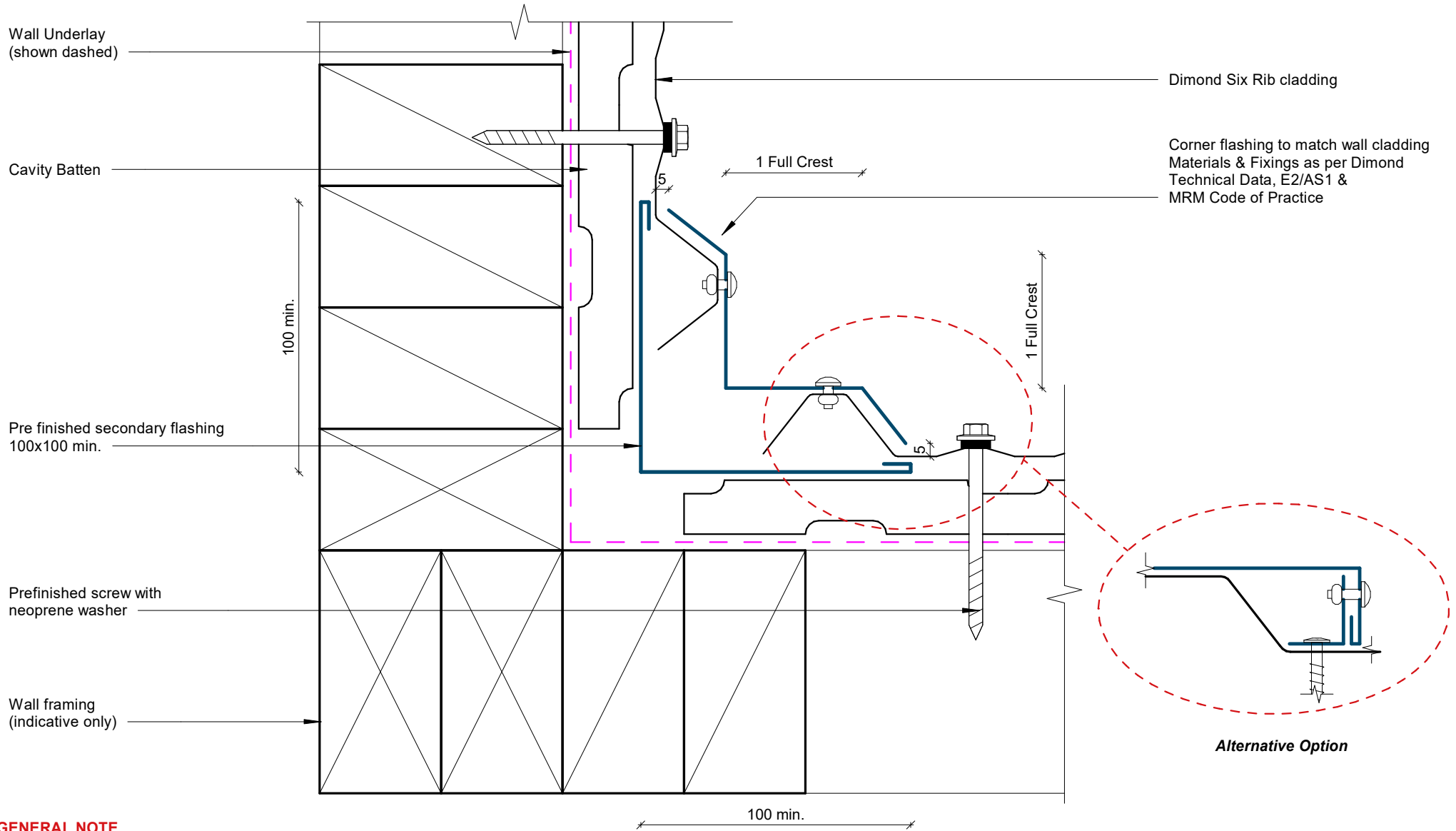


GENERAL NOTE

Cavity battens or timber framing that contain copper must be separated from steel cladding by a strip of wall or roof underlay or DPC.

External Corner Detail

Rev: 1 **Six Rib Residential Vertical Cladding**

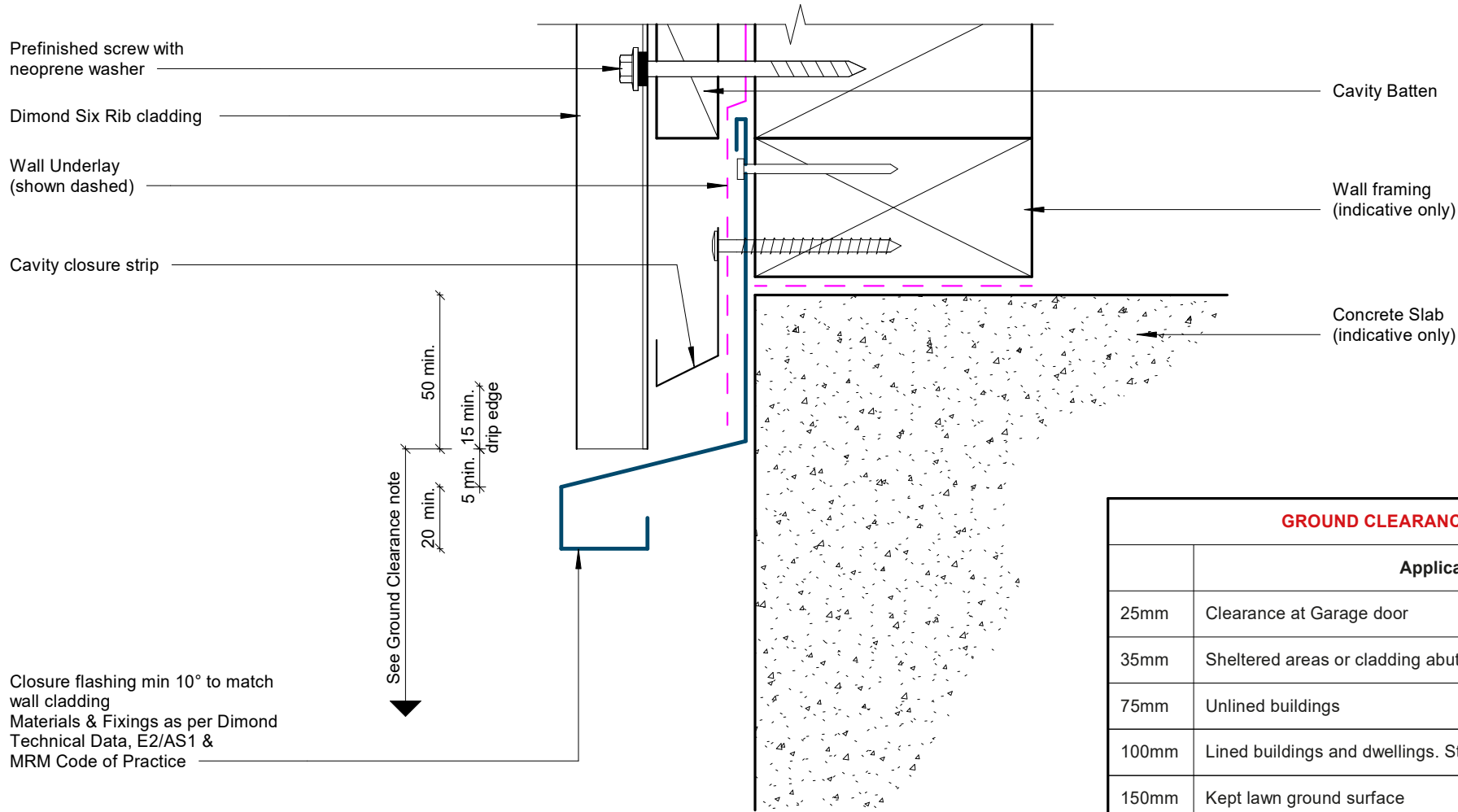


GENERAL NOTE

Cavity battens or timber framing that contain copper must be separated from steel cladding by a strip of wall or roof underlay or DPC.

Internal Corner Detail

Rev: 1 Six Rib Residential Vertical Cladding

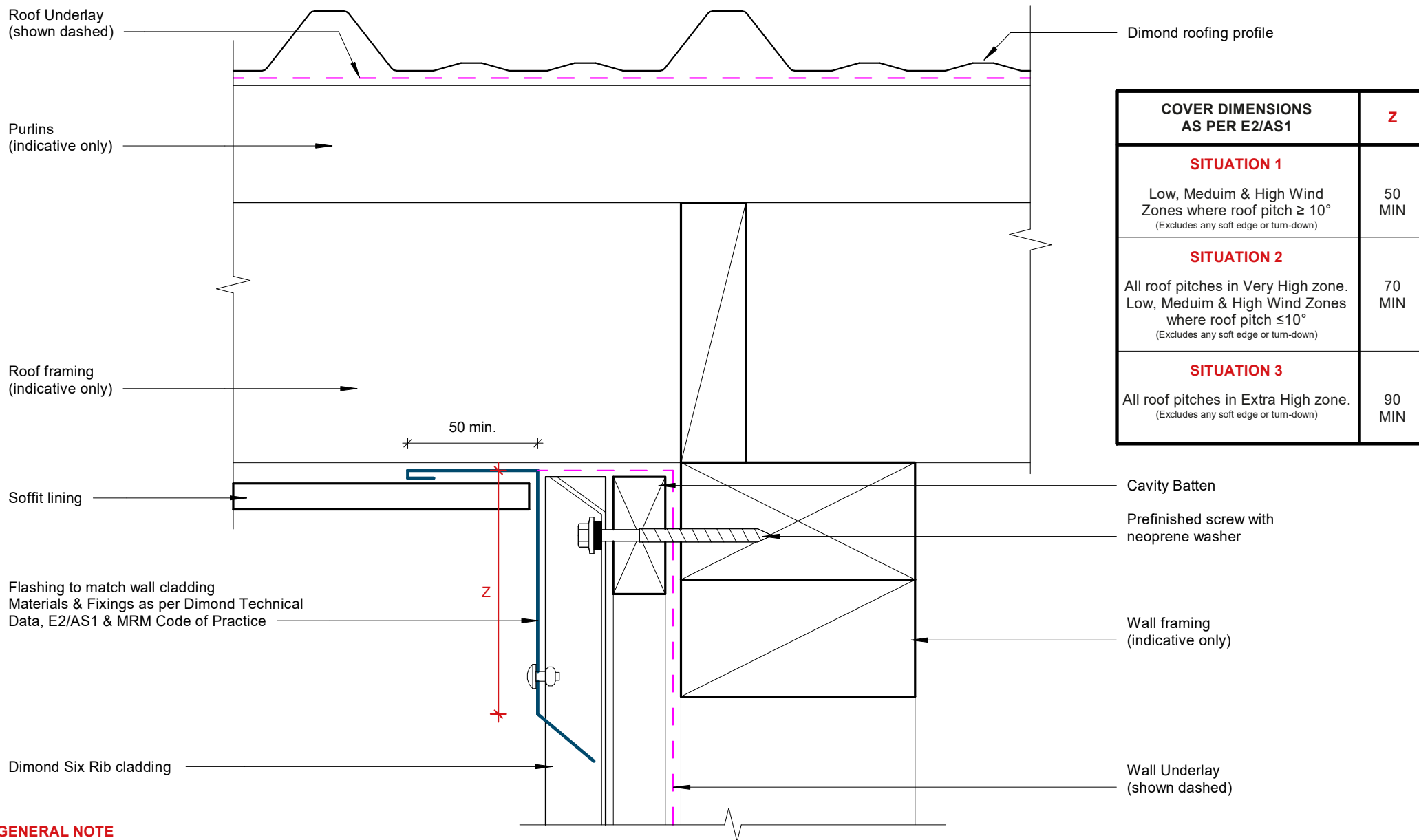


GROUND CLEARANCE NOTE	
	Application
25mm	Clearance at Garage door
35mm	Sheltered areas or cladding abutting a deck
75mm	Unlined buildings
100mm	Lined buildings and dwellings. Stone chip ground surface
150mm	Kept lawn ground surface
175mm	Pasture ground surface

GENERAL NOTE

Cavity battens or timber framing that contain copper must be separated from steel cladding by a strip of wall or roof underlay or DPC.

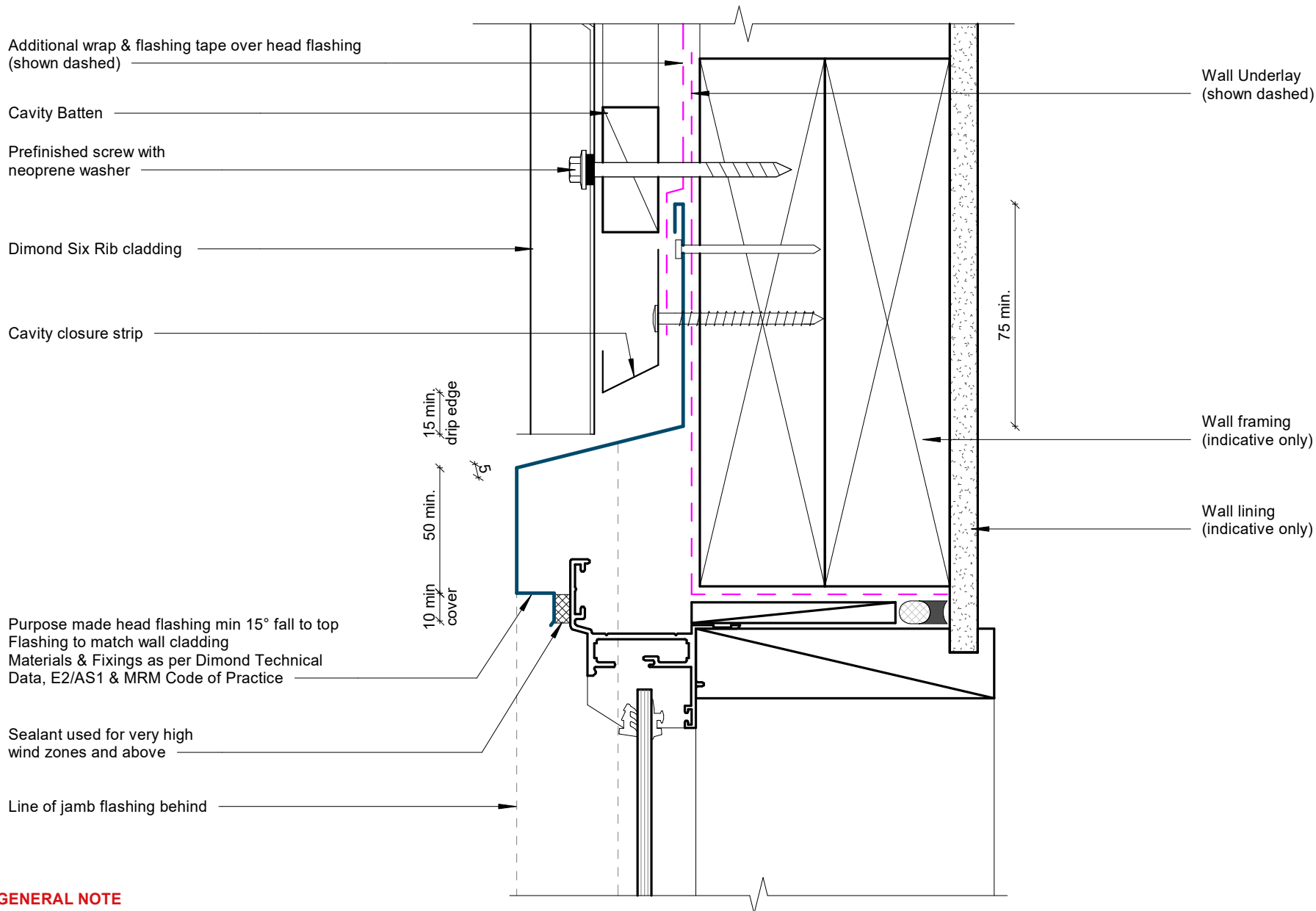
Base Detail



GENERAL NOTE

Cavity battens or timber framing that contain copper must be separated from steel cladding by a strip of wall or roof underlay or DPC.

Soffit Detail



GENERAL NOTE

Cavity battens or timber framing that contain copper must be separated from steel cladding by a strip of wall or roof underlay or DPC.

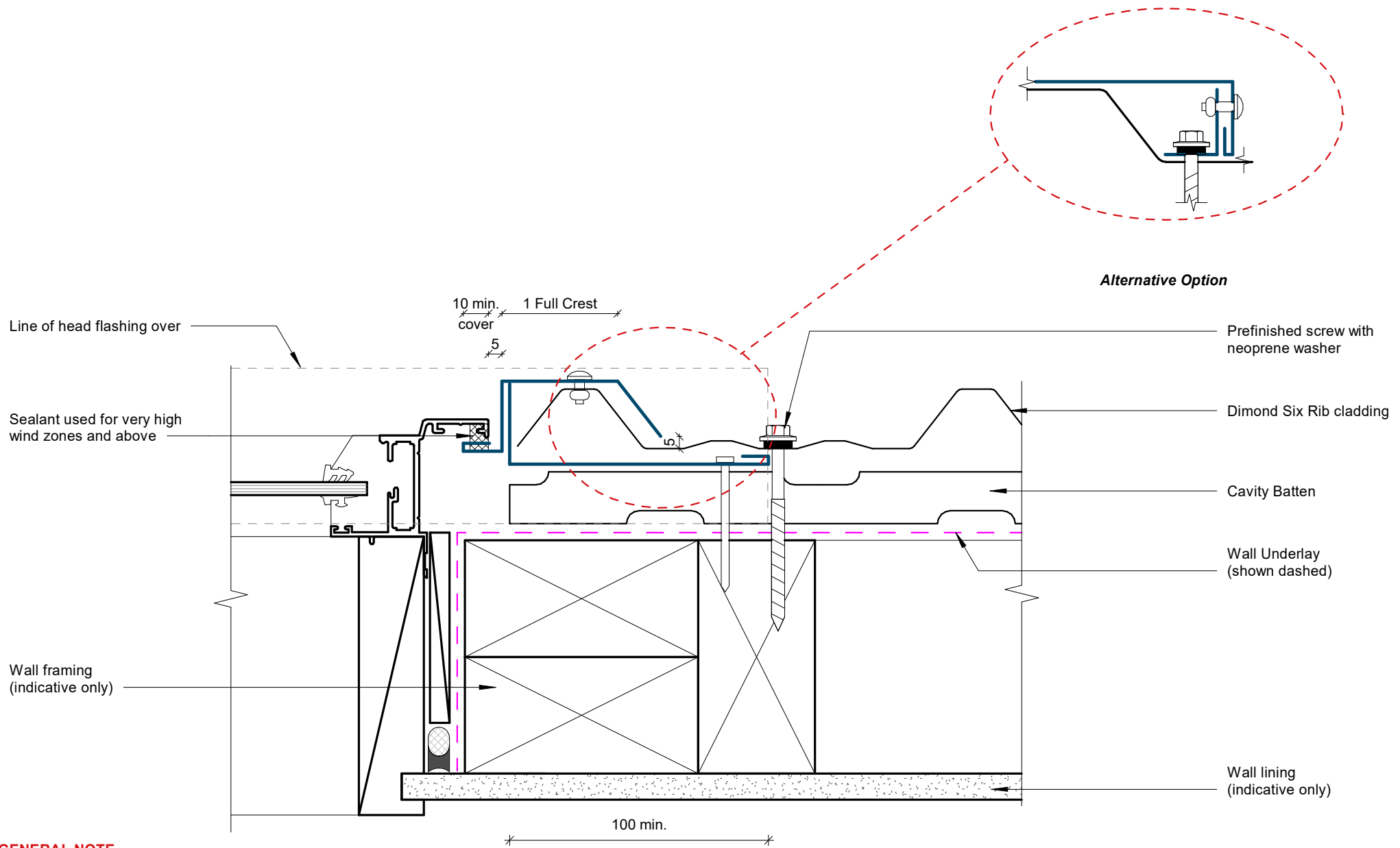
Window Head Detail

Rev: 1 **Six Rib Residential Vertical Cladding**



©Dimond 2023, all rights reserved. The information and specifications contained in this document are proprietary to Dimond and may not be used other than for the purpose of designing or building a roof or roofing system solely using products supplied or approved by Dimond ("Permitted Purpose"). You may copy this document solely for the Permitted Purpose, but may not otherwise copy, publish, distribute or modify this document without Dimond's prior written consent. Dimond will not be liable for any use of this document or information and specifications contained in this document, other than for the Permitted Purpose

Date: Jun 2025 Scale: 1 : 2 Sheet: **6RRVC09**



GENERAL NOTE

Cavity battens or timber framing that contain copper must be separated from steel cladding by a strip of wall or roof underlay or DPC.

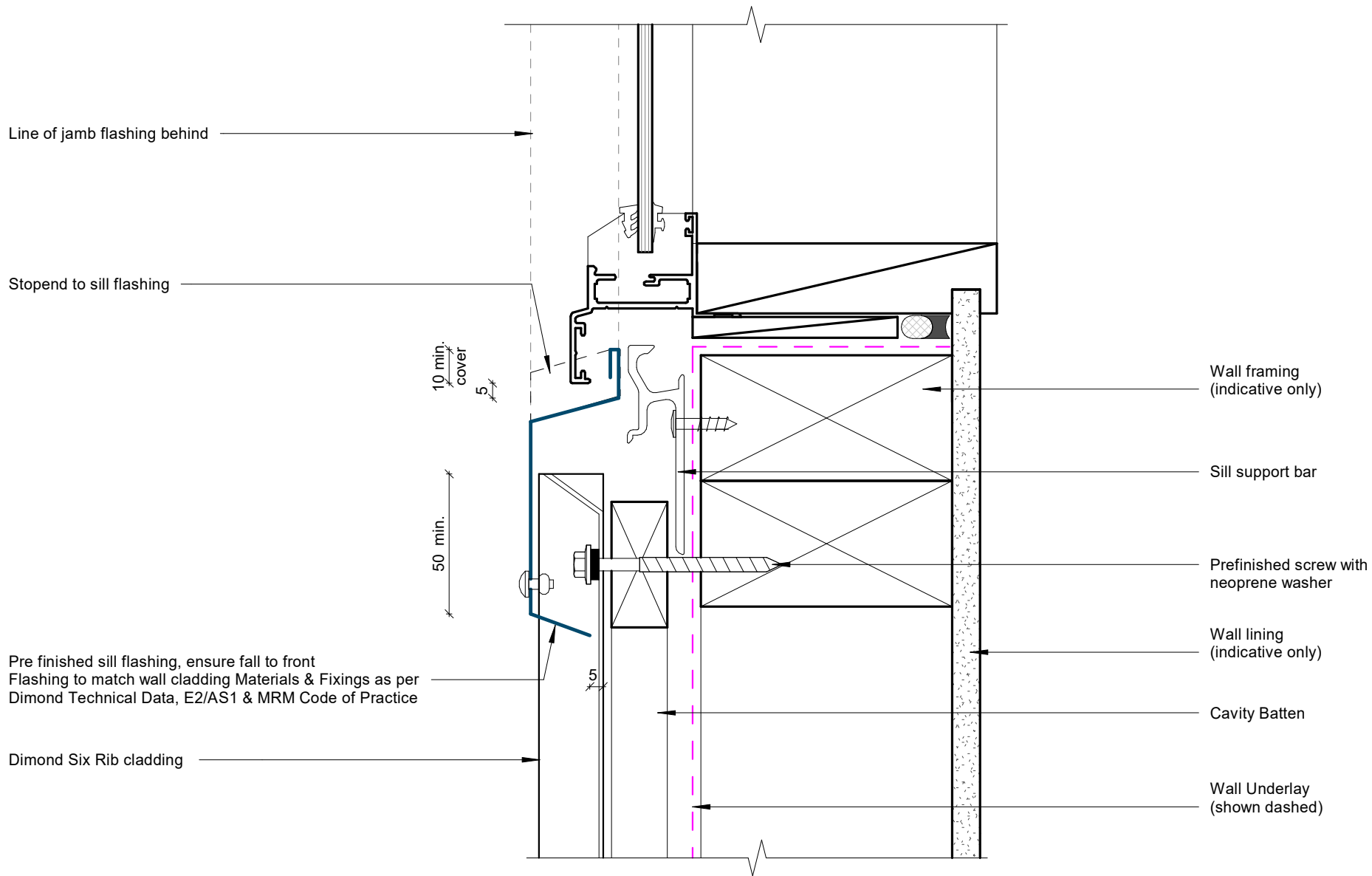
Window Jamb Detail

Rev: 1 **Six Rib Residential Vertical Cladding**



©Dimond 2023, all rights reserved. The information and specifications contained in this document are proprietary to Dimond and may not be used other than for the purpose of designing or building a roof or roofing system solely using products supplied or approved by Dimond ("Permitted Purpose"). You may copy this document solely for the Permitted Purpose, but may not otherwise copy, publish, distribute or modify this document without Dimond's prior written consent. Dimond will not be liable for any use of this document or information and specifications contained in this document, other than for the Permitted Purpose

Date: Jun 2025 Scale: 1 : 2 Sheet: **6RRVC10**

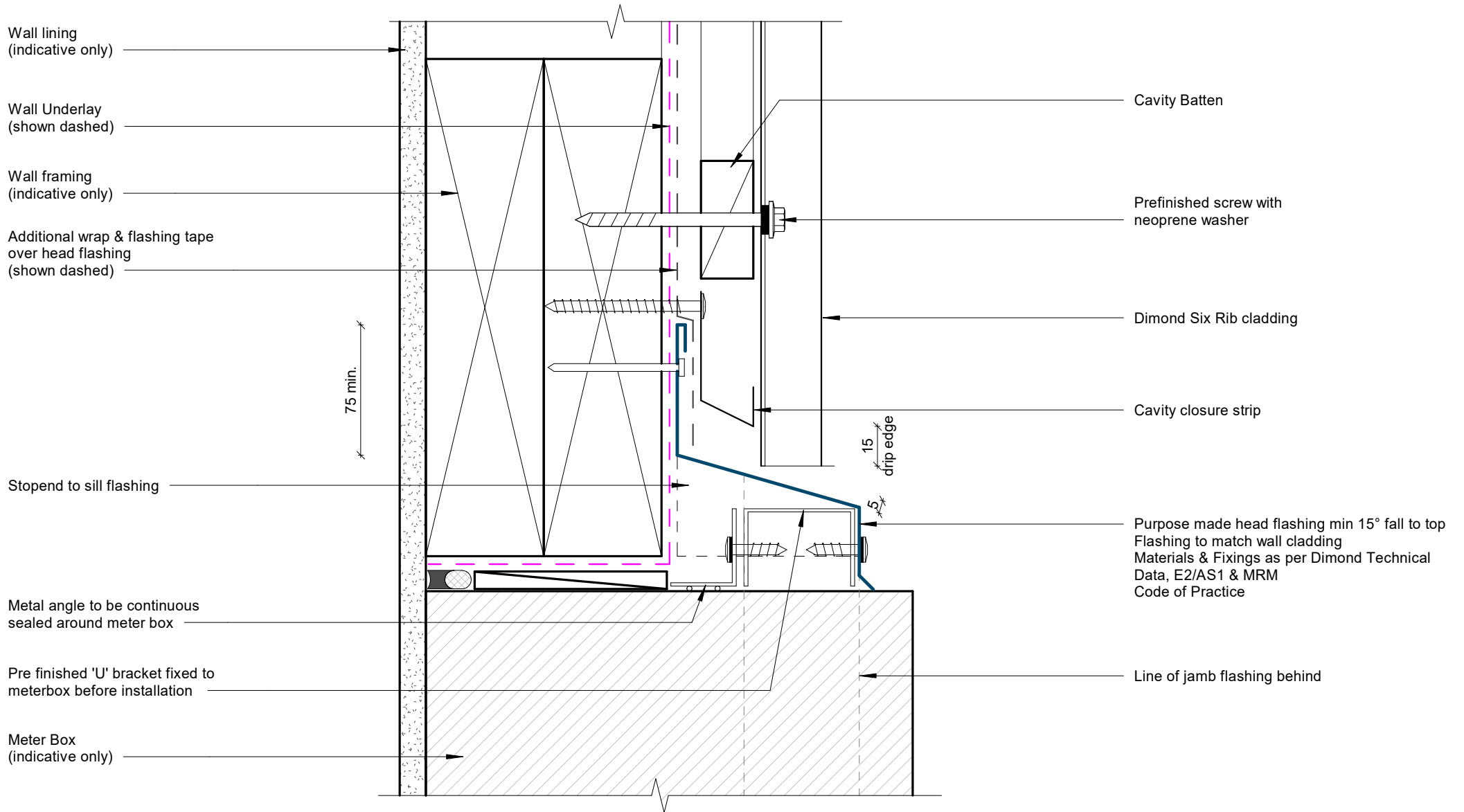


GENERAL NOTE

Cavity battens or timber framing that contain copper must be separated from steel cladding by a strip of wall or roof underlay or DPC.

Window Sill Detail

Rev: 1 **Six Rib Residential Vertical Cladding**

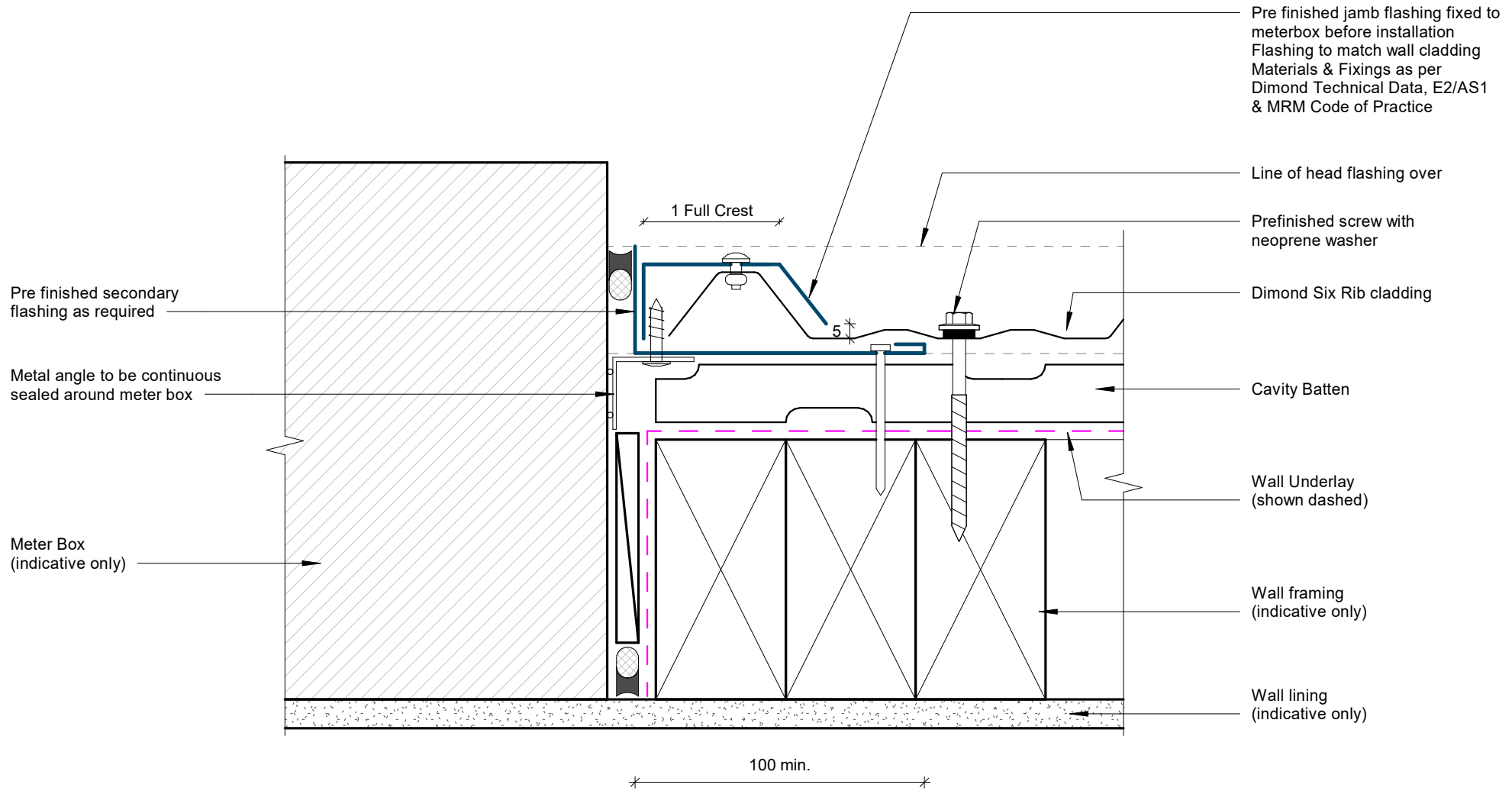


GENERAL NOTE

Cavity battens or timber framing that contain copper must be separated from steel cladding by a strip of wall or roof underlay or DPC.

Meterbox Head Detail

Rev: 1 Six Rib Residential Vertical Cladding



GENERAL NOTE

Cavity battens or timber framing that contain copper must be separated from steel cladding by a strip of wall or roof underlay or DPC.

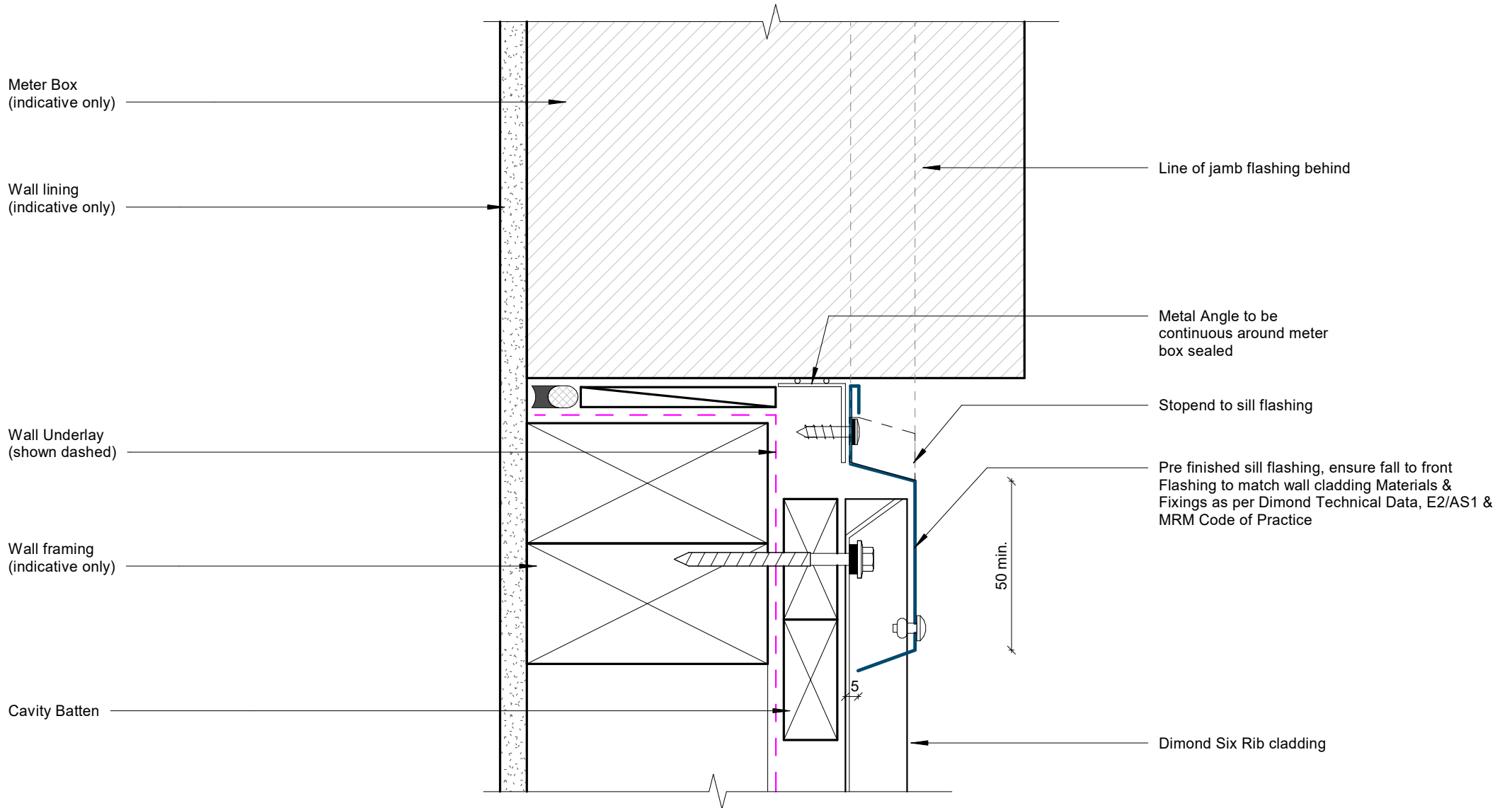
Meterbox Jamb Detail

Rev: 1 **Six Rib Residential Vertical Cladding**



©Dimond 2023, all rights reserved. The information and specifications contained in this document are proprietary to Dimond and may not be used other than for the purpose of designing or building a roof or roofing system solely using products supplied or approved by Dimond ("Permitted Purpose"). You may copy this document solely for the Permitted Purpose, but may not otherwise copy, publish, distribute or modify this document without Dimond's prior written consent. Dimond will not be liable for any use of this document or information and specifications contained in this document, other than for the Permitted Purpose

Date: Jun 2025 Scale: 1 : 2 Sheet: **6RRVC13**

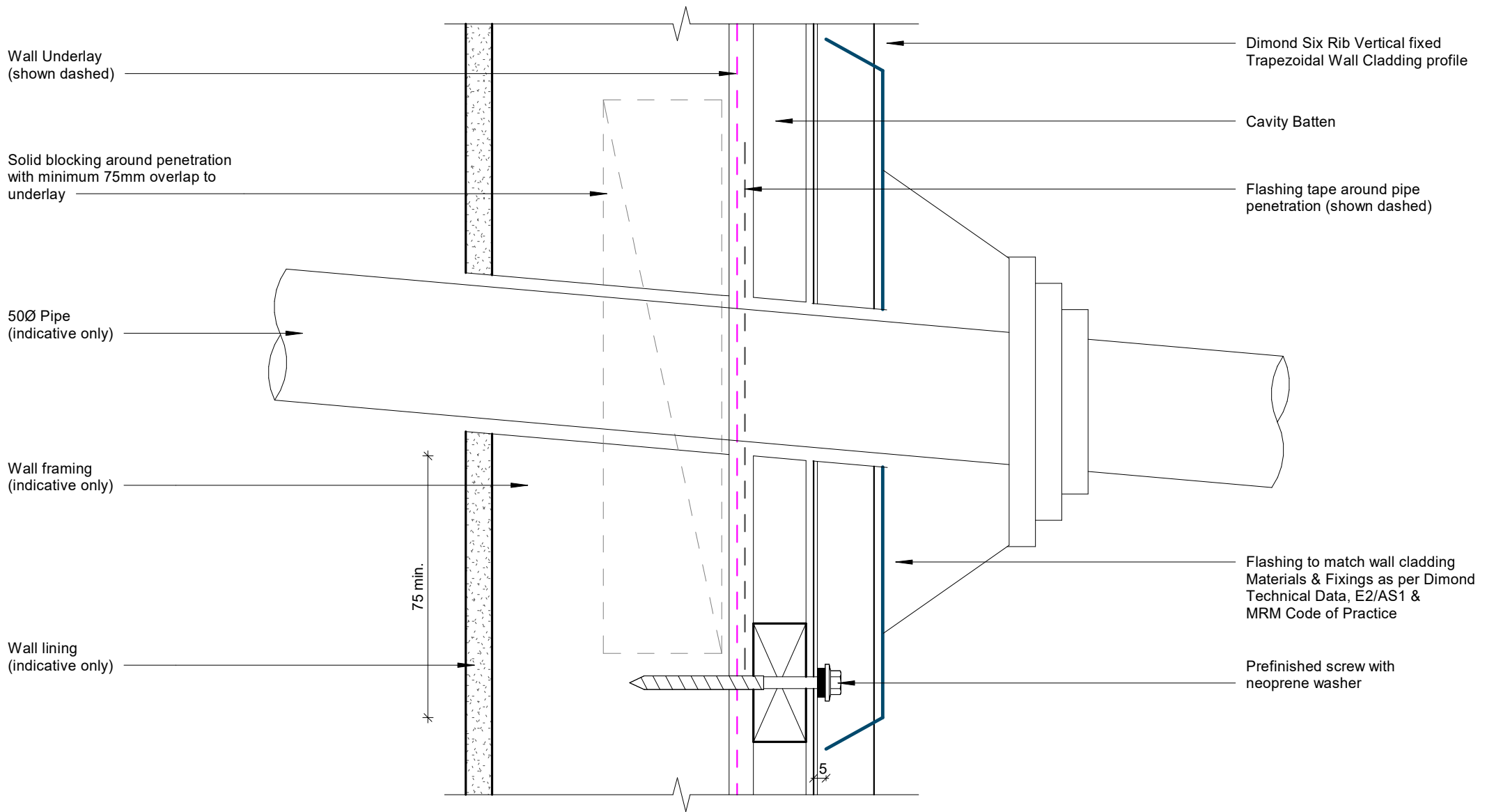


GENERAL NOTE

Cavity battens or timber framing that contain copper must be separated from steel cladding by a strip of wall or roof underlay or DPC.

Meterbox Sill Detail

Rev: 1 Six Rib Residential Vertical Cladding

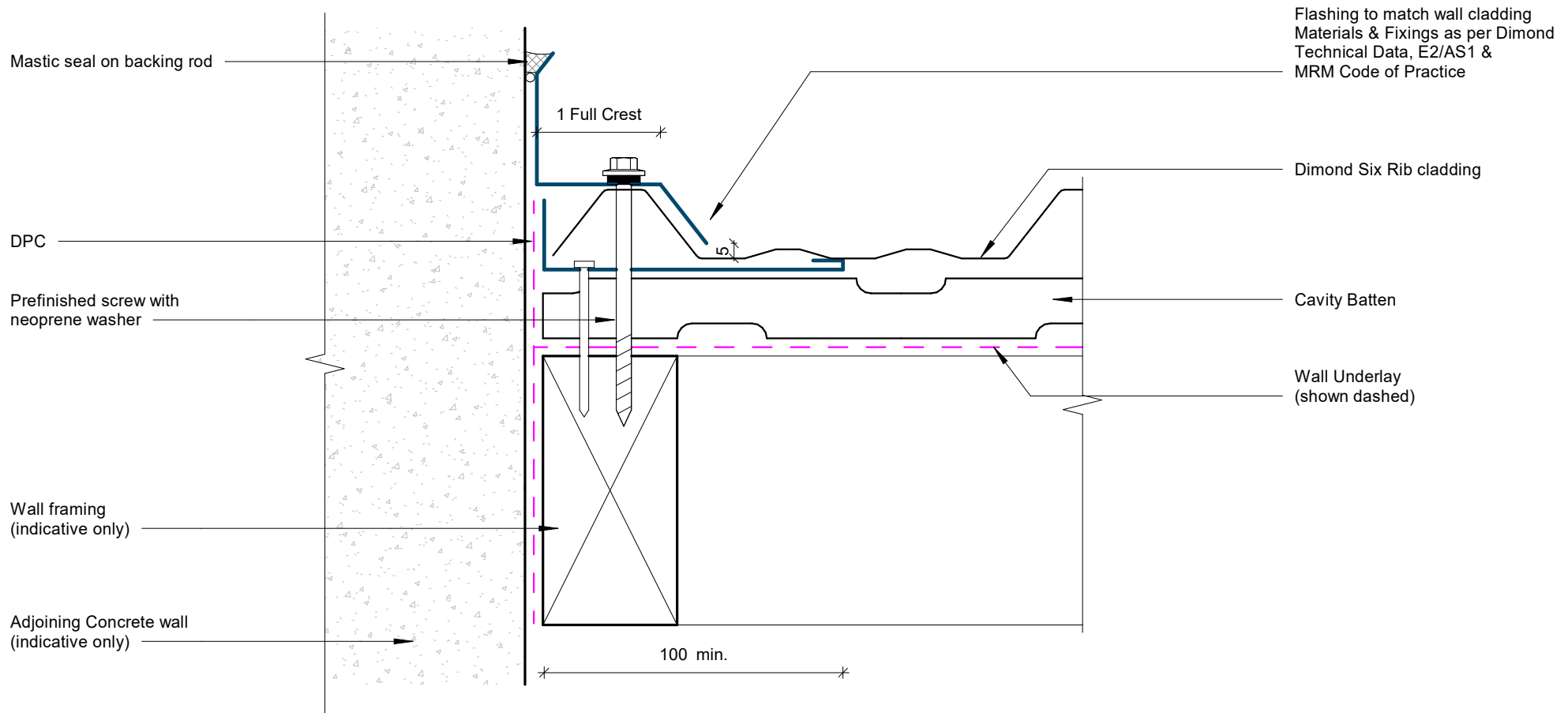


GENERAL NOTE

Cavity battens or timber framing that contain copper must be separated from steel cladding by a strip of wall or roof underlay or DPC.

Pipe Penetration Detail

Rev: 1 Six Rib Residential Vertical Cladding



GENERAL NOTE

Cavity battens or timber framing that contain copper must be separated from steel cladding by a strip of wall or roof underlay or DPC.

Cladding to Concrete Junction Detail

Rev: 1 **Six Rib Residential Vertical Cladding**



©Dimond 2023, all rights reserved. The information and specifications contained in this document are proprietary to Dimond and may not be used other than for the purpose of designing or building a roof or roofing system solely using products supplied or approved by Dimond ("Permitted Purpose"). You may copy this document solely for the Permitted Purpose, but may not otherwise copy, publish, distribute or modify this document without Dimond's prior written consent. Dimond will not be liable for any use of this document or information and specifications contained in this document, other than for the Permitted Purpose

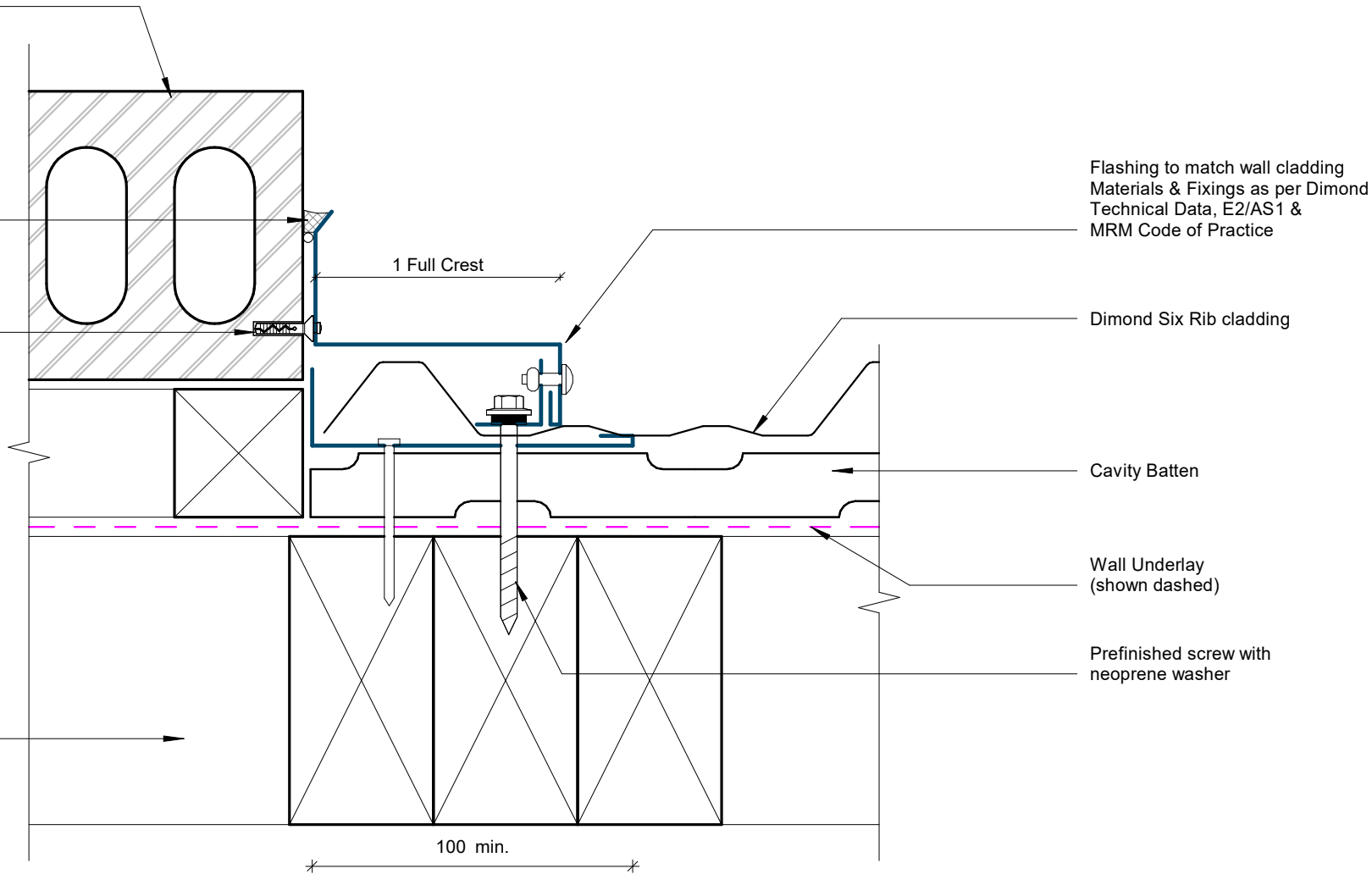
Date: Jun 2025 Scale: 1 : 2 Sheet: **6RRVC16**

Adjoining Brick veneer on cavity
(indicative only)

Mastic seal on backing rod

Rawplug

Wall framing
(indicative only)



GENERAL NOTE

Cavity battens or timber framing that contain copper must be separated from steel cladding by a strip of wall or roof underlay or DPC.

Cladding to Brick Junction Detail

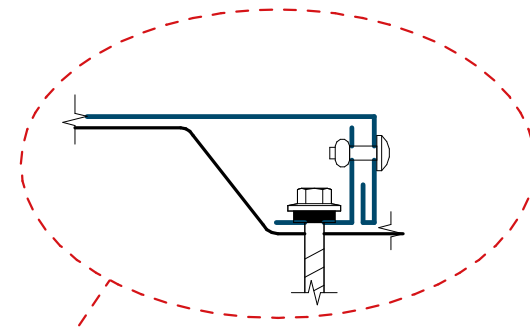
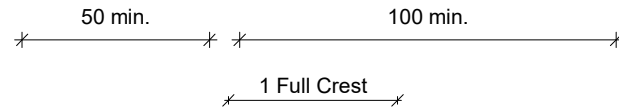
Rev: 1 Six Rib Residential Vertical Cladding

Flashing to match wall cladding
Materials & Fixings as per Dimond
Technical Data, E2/AS1 &
MRM Code of Practice

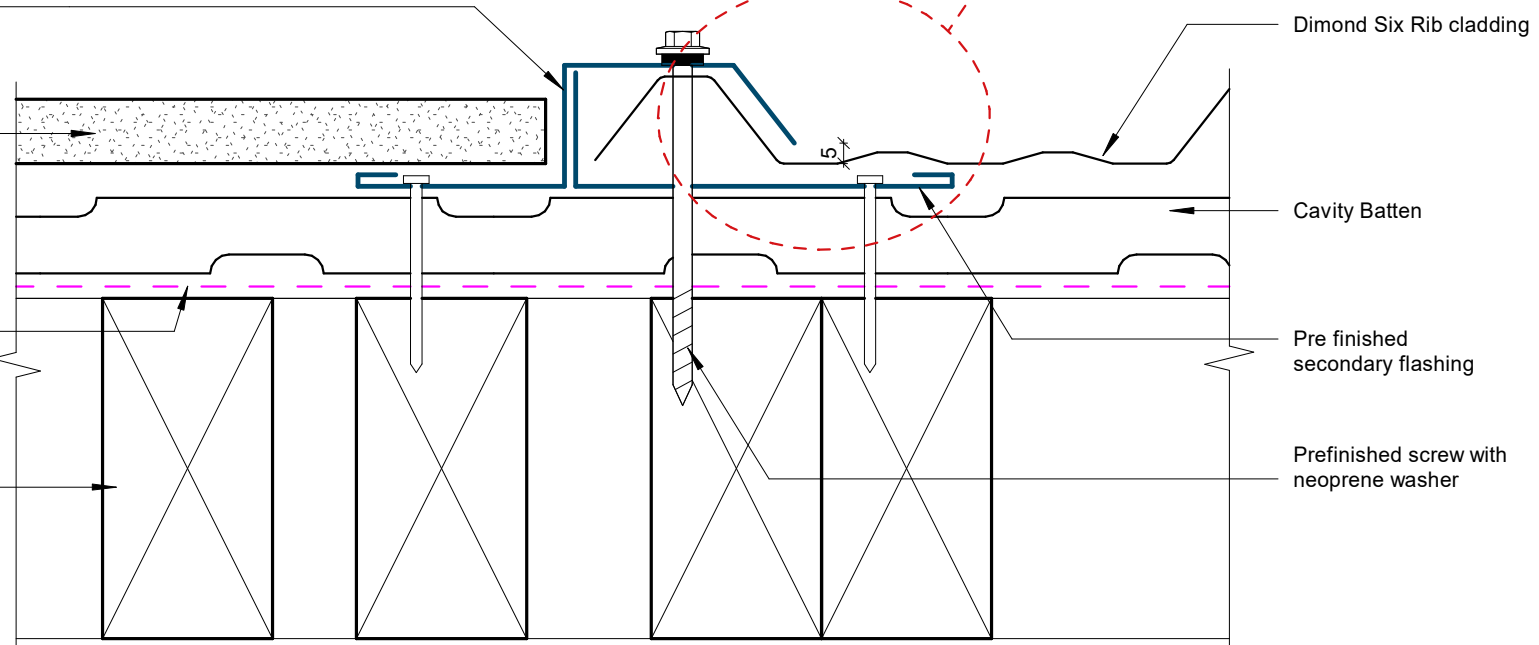
Adjoining Panel
Cladding on cavity
(indicative only)

Wall Underlay
(shown dashed)

Wall framing
(indicative only)



Alternative Option



GENERAL NOTE

Cavity battens or timber framing that contain copper must be separated from steel cladding by a strip of wall or roof underlay or DPC.

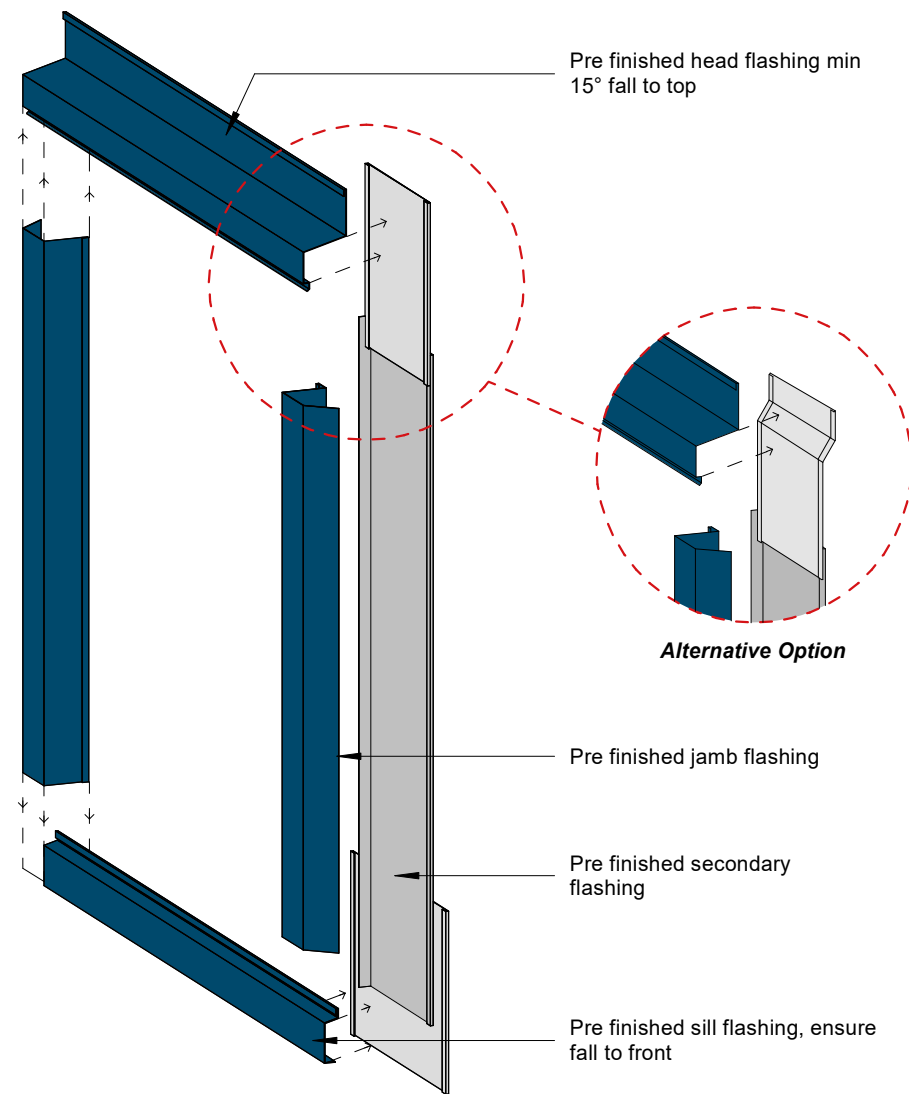
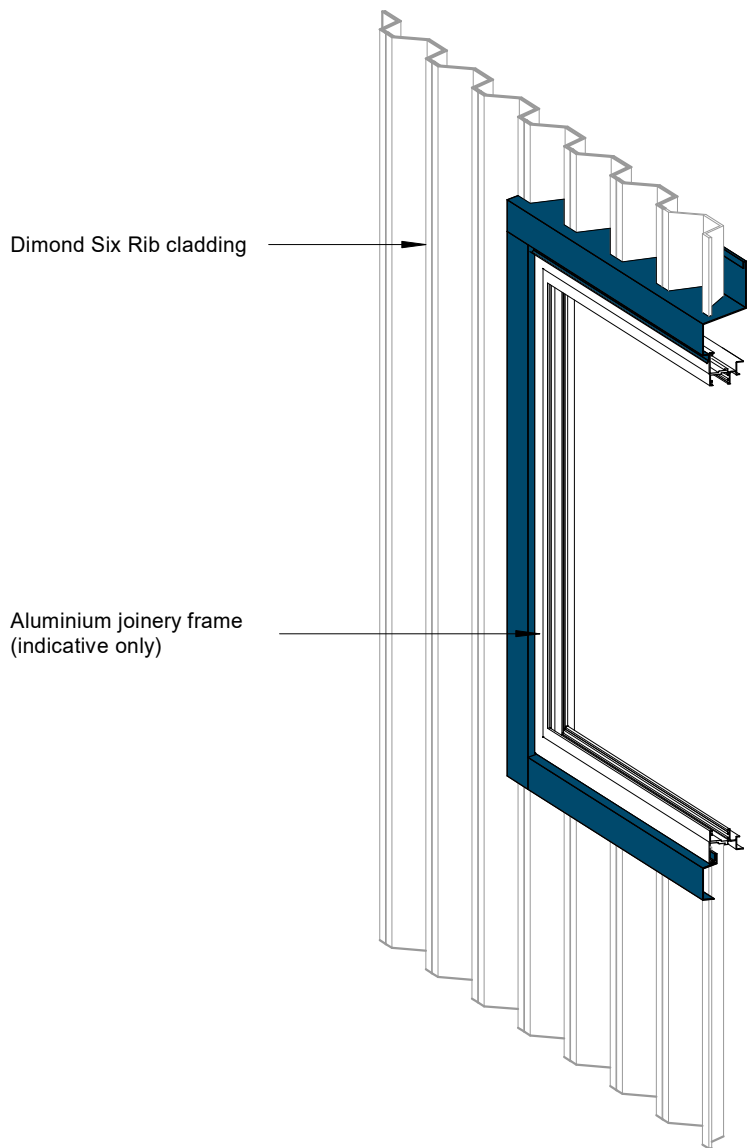
Cladding to Panel Junction Detail

Rev: 1 **Six Rib Residential Vertical Cladding**



©Dimond 2023, all rights reserved. The information and specifications contained in this document are proprietary to Dimond and may not be used other than for the purpose of designing or building a roof or roofing system solely using products supplied or approved by Dimond ("Permitted Purpose"). You may copy this document solely for the Permitted Purpose, but may not otherwise copy, publish, distribute or modify this document without Dimond's prior written consent. Dimond will not be liable for any use of this document or information and specifications contained in this document, other than for the Permitted Purpose

Date: Jun 2025 Scale: 1 : 2 Sheet: **6RRVC18**



GENERAL NOTE

Cavity battens or timber framing that contain copper must be separated from steel cladding by a strip of wall or roof underlay or DPC.

Flashing to match wall cladding

Materials & Fixings as per Dimond Technical Data, E2/AS1 & MRM Code of Practice

3D Window Flashing Detail

Rev: 1

Six Rib Residential Vertical Cladding