

# SIX RIB

## COMMERCIAL VERTICAL WALL CLADDING

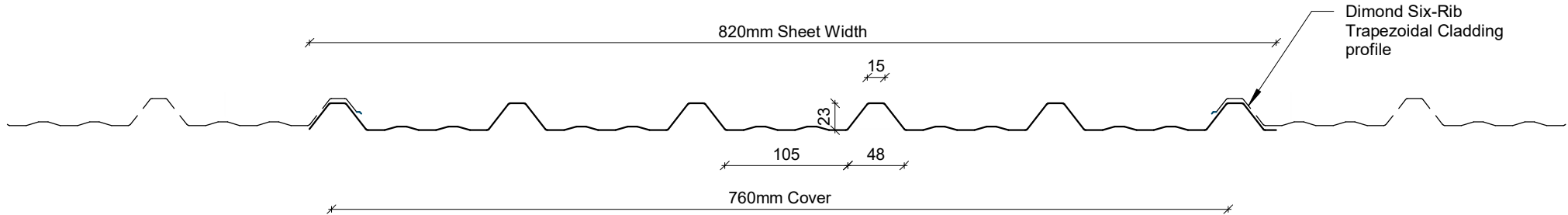
### DETAILS:

### REV:

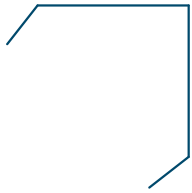
### DATE:

6RCVC00	Cover Sheet	1	Sep 2025
6RCVC01	Profile Summary	1	Sep 2025
6RCVC02	Typical Flashing Detail	1	Sep 2025
6RCVC03	Barge Detail	1	Sep 2025
6RCVC04	Wall to Roof Transverse Detail	1	Sep 2025
6RCVC05	Wall to Roof Detail	1	Sep 2025
6RCVC06	Box Gutter Detail	1	Sep 2025
6RCVC07	Wall to Roof Apex Detail	1	Sep 2025
6RCVC08	External Corner Detail	1	Sep 2025
6RCVC09	Internal Corner Detail	1	Sep 2025
6RCVC10	Base Detail	1	Sep 2025
6RCVC11	Window / Door Head Detail	1	Sep 2025
6RCVC12	Window / Door Jamb Detail	1	Sep 2025
6RCVC13	Window Sill Detail	1	Sep 2025

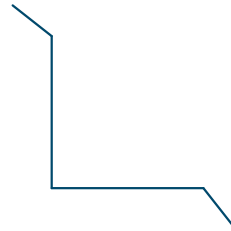
PROFILE OVERVIEW	
RIB TYPE	Low
RIBS PER SHEET	6 Ribs per sheet
WIDTH	760mm Cover, 820mm Sheet



## Profile Summary



External Corner /  
Barge Flashing



Internal Corner Flashing



Base Flashing



Eaves Flashing



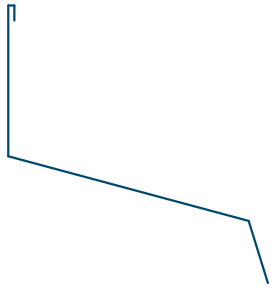
Window Sill Flashing



Window Head Flashing



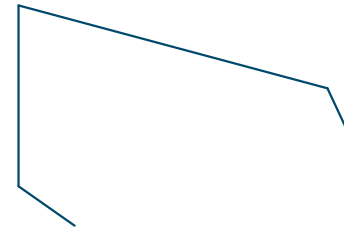
Window Jamb Flashing



Wall to Roof Flashing 1



Wall to Roof Flashing 2



Wall Roof to Wall Apex Flashing

# Typical Flashing Detail

Barge flashing to match roofing.  
Materials & Fixings as per Dimond  
Technical Data & MRM Code of Practice

Profiled foam closure  
where required

100 min

Prefinished screw with  
neoprene washer

Dimond DHS girt

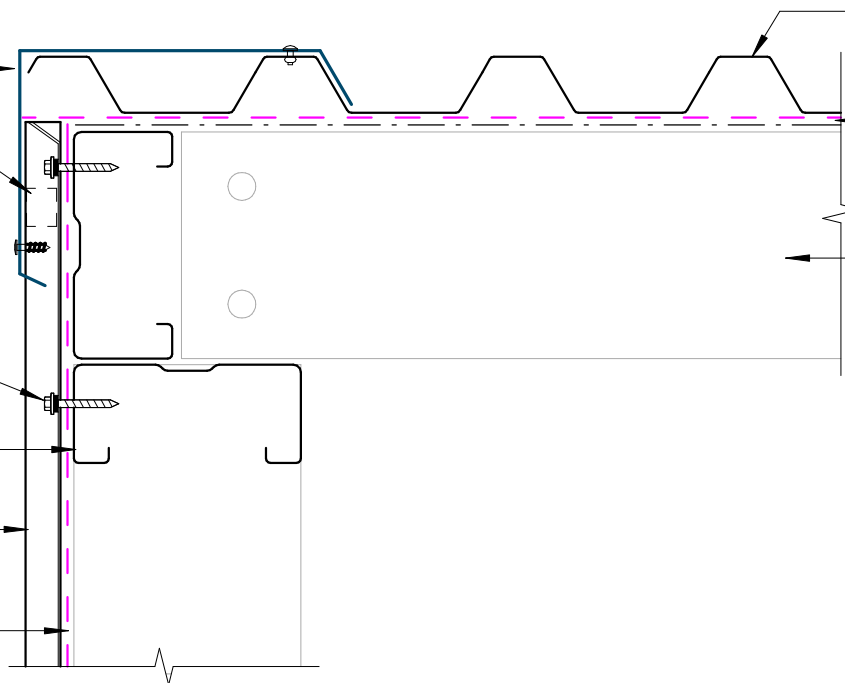
Dimond Six Rib cladding

Wall Underlay  
(shown dashed)

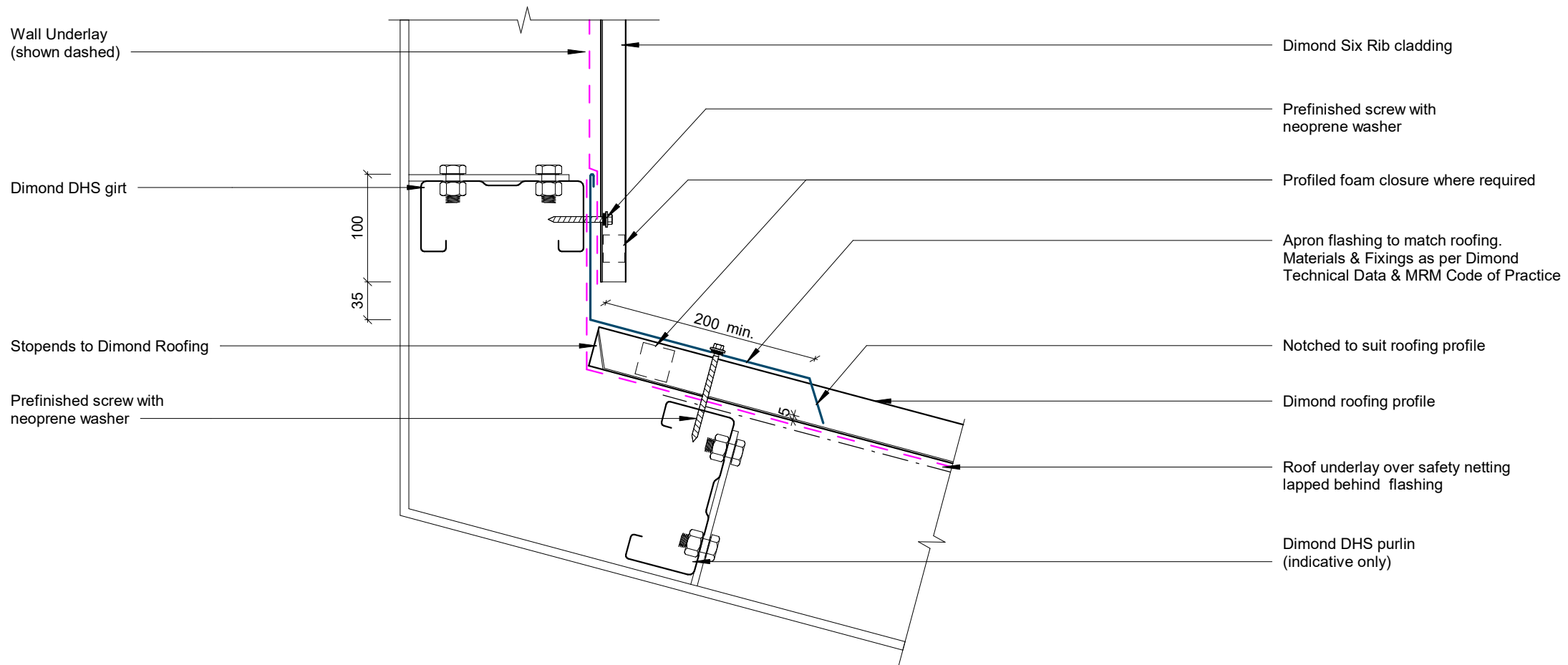
Dimond roofing profile

Roof underlay  
over safety netting

Dimond DHS purlin  
(indicative only)



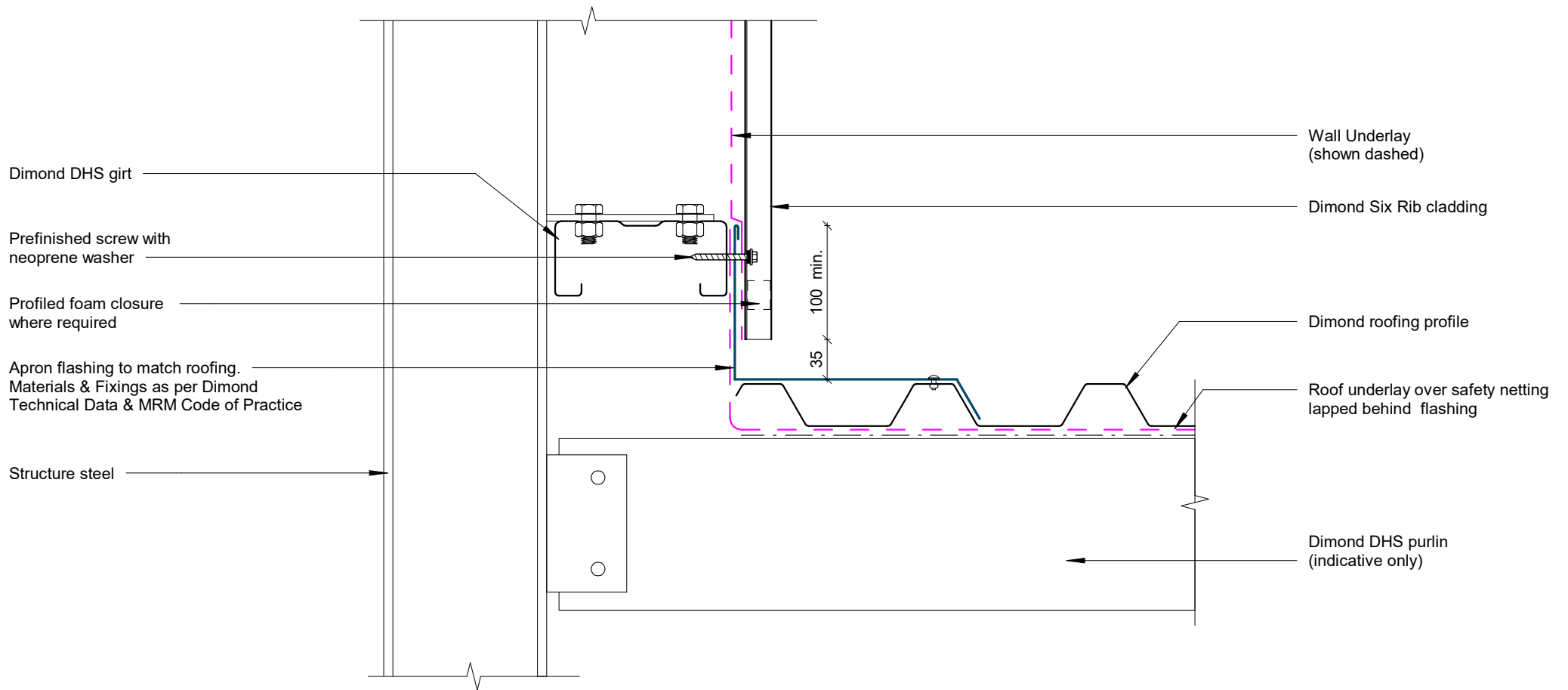
## Barge Detail



## Wall to Roof Transverse Detail

Rev: 1

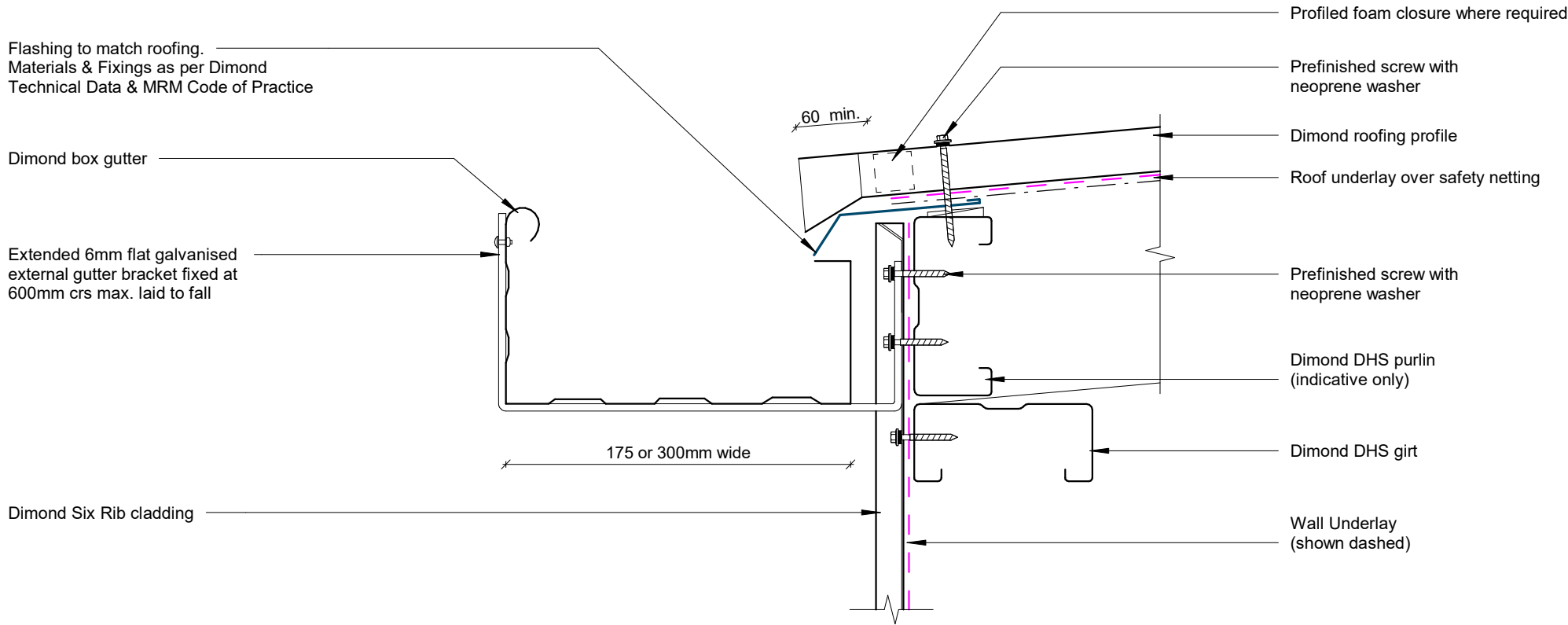
Six Rib Commercial Vertical Cladding



# Wall to Roof Detail

Rev: 1

Six Rib Commercial Vertical Cladding



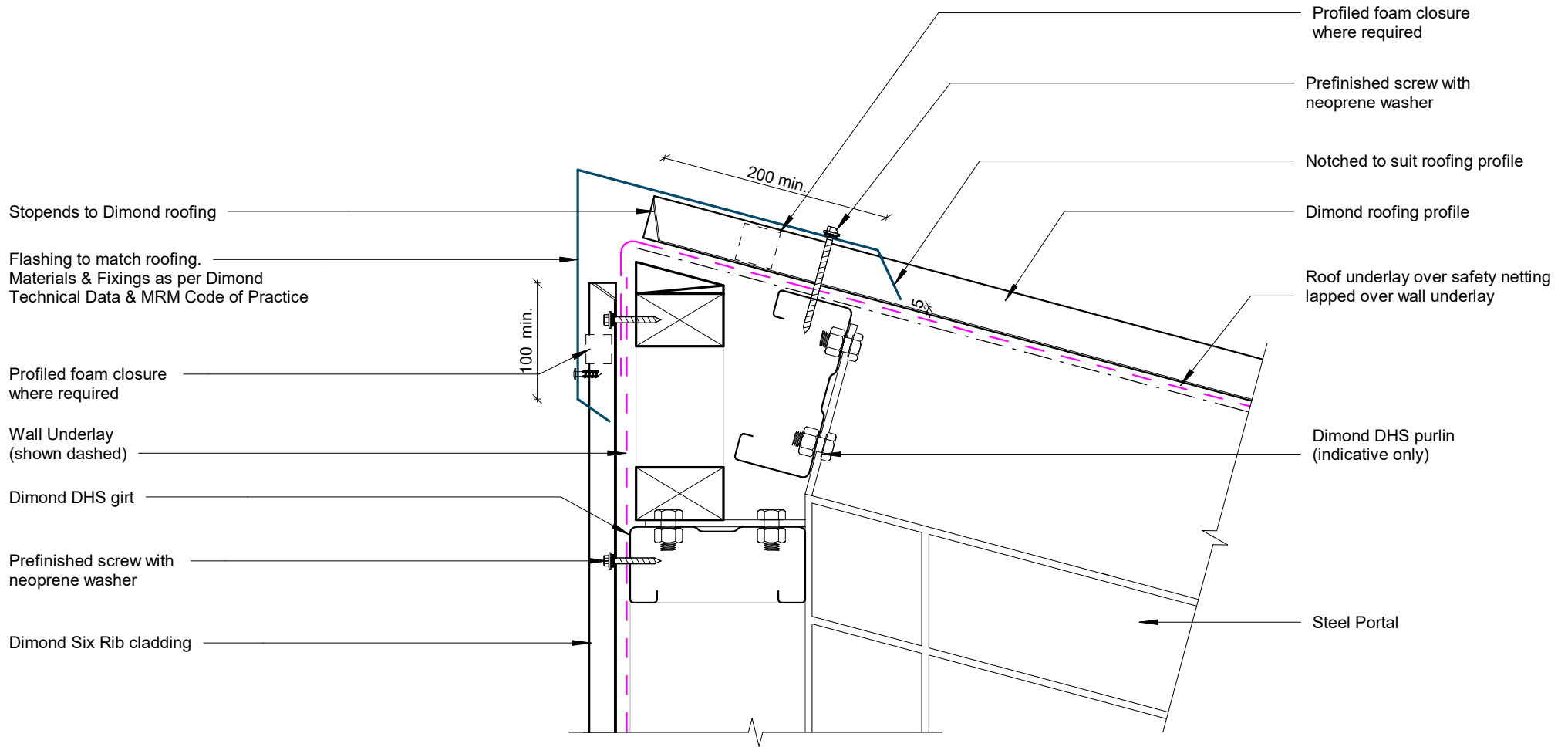
# Box Gutter Detail

Six Rib Commercial Vertical Cladding

Rev: 1



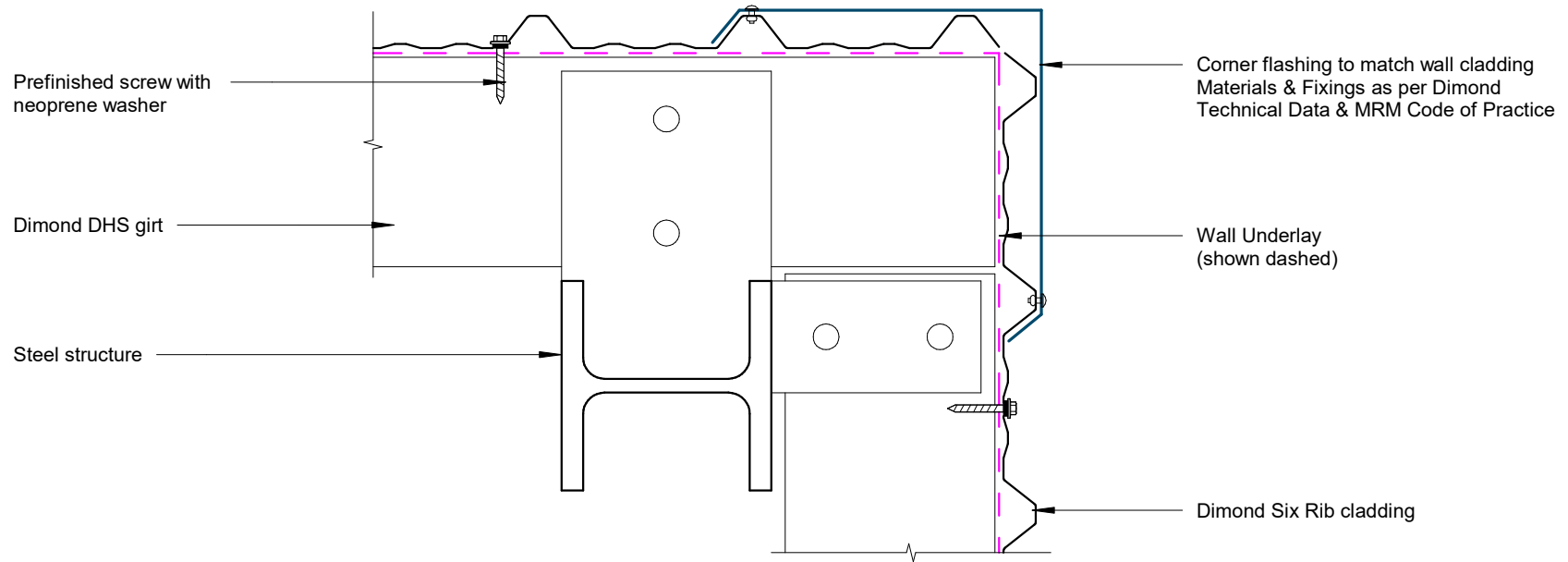
©Dimond 2023, all rights reserved. The information and specifications contained in this document are proprietary to Dimond and may not be used other than for the purpose of designing or building a roof or roofing system solely using products supplied or approved by Dimond ("Permitted Purpose"). You may copy this document solely for the Permitted Purpose, but may not otherwise copy, publish, distribute or modify this document without Dimond's prior written consent. Dimond will not be liable for any use of this document or information and specifications contained in this document, other than for the Permitted Purpose



## Wall to Roof Apex Detail

Rev: 1

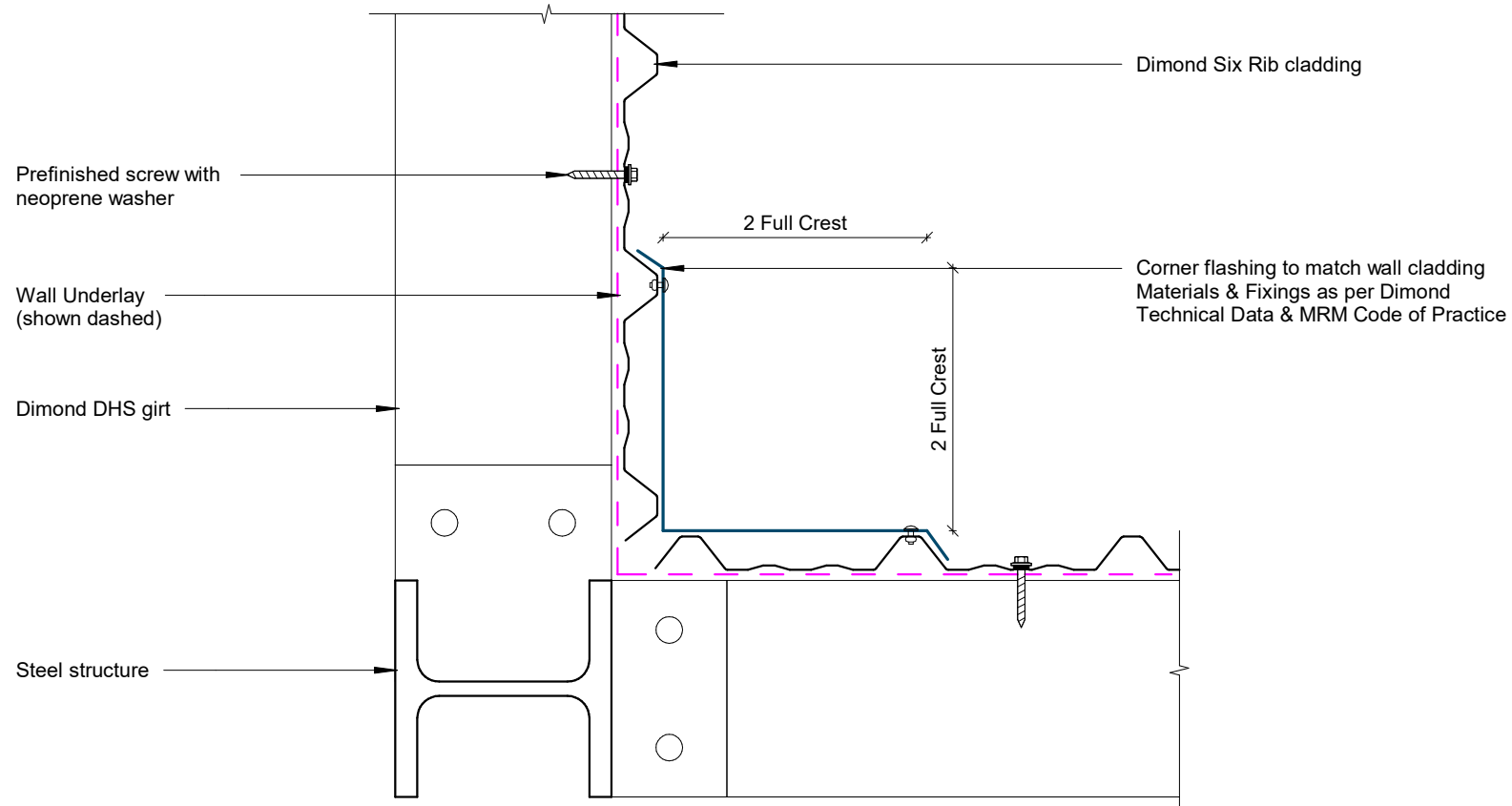
Six Rib Commercial Vertical Cladding



## External Corner Detail

Rev: 1

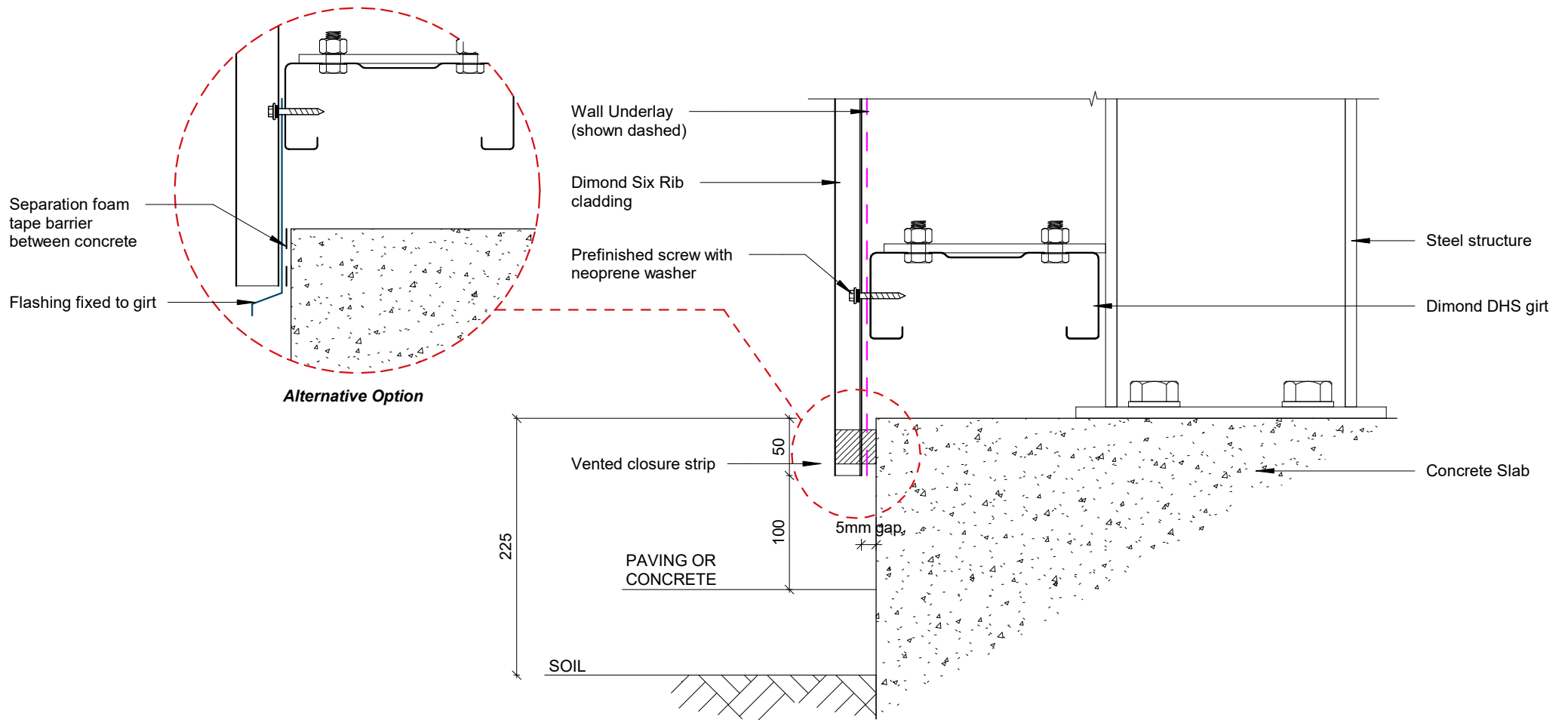
Six Rib Commercial Vertical Cladding



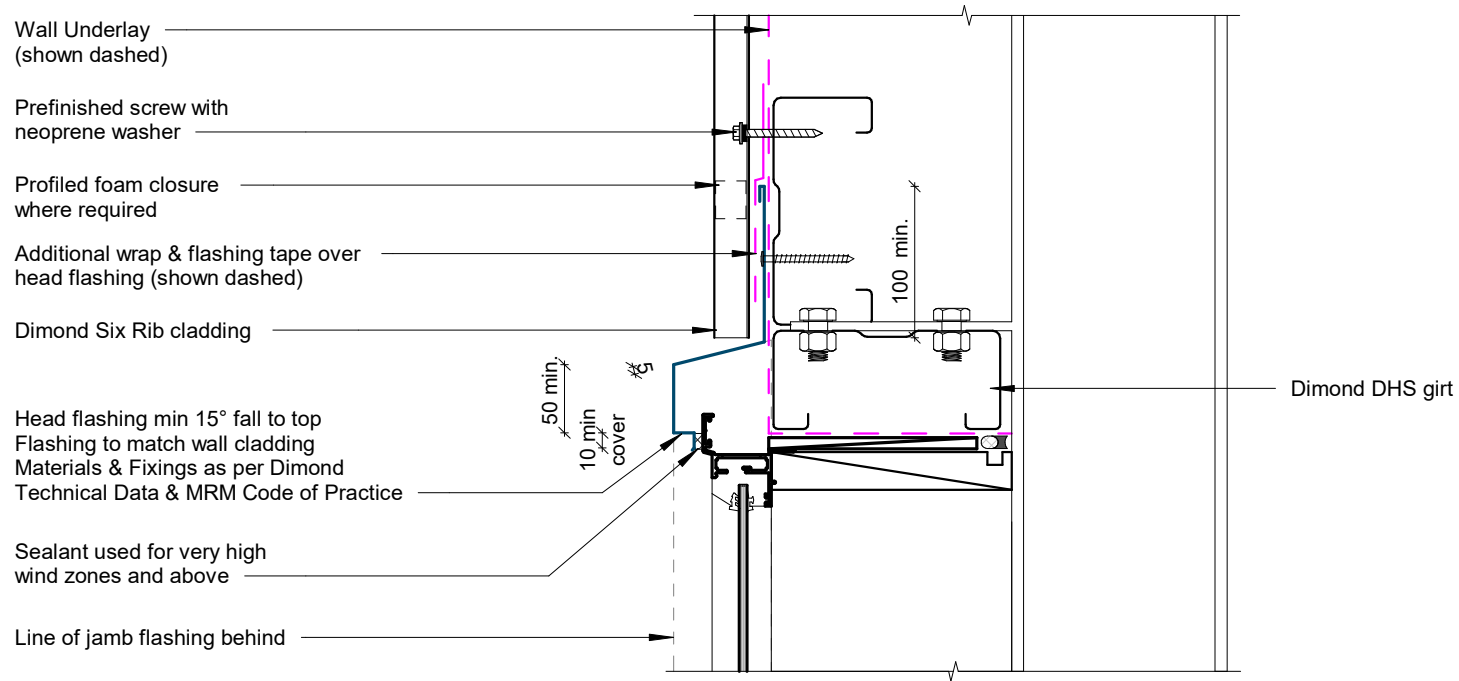
## Internal Corner Detail

Rev: 1

Six Rib Commercial Vertical Cladding



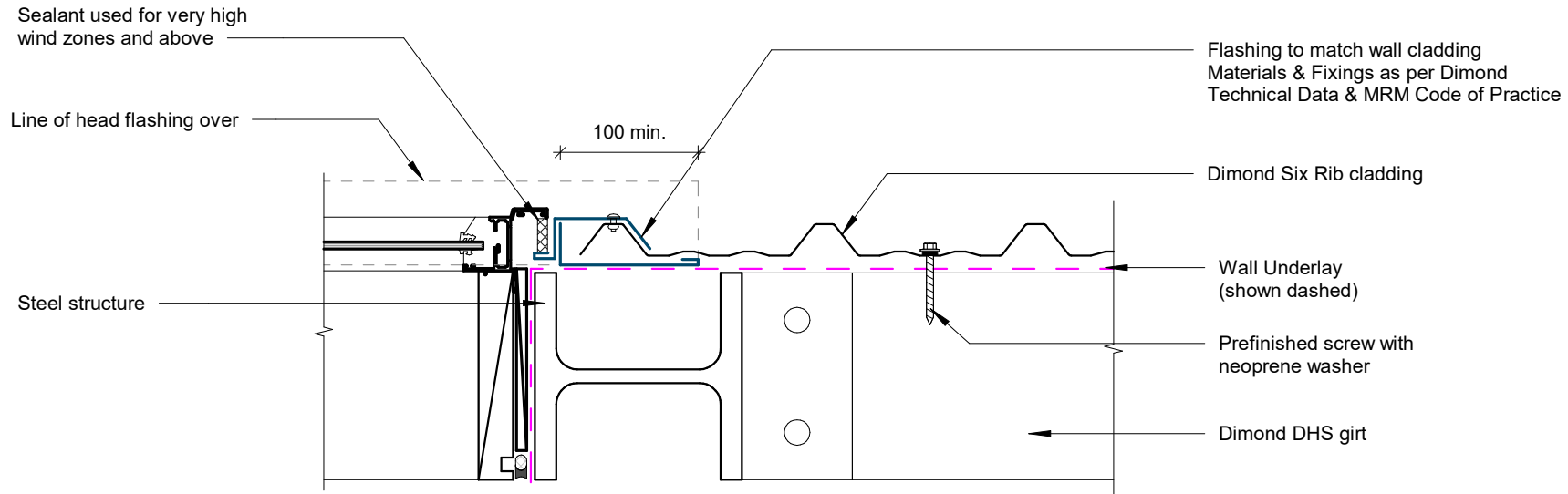
## Base Detail



## Window / Door Head Detail

Rev: 1

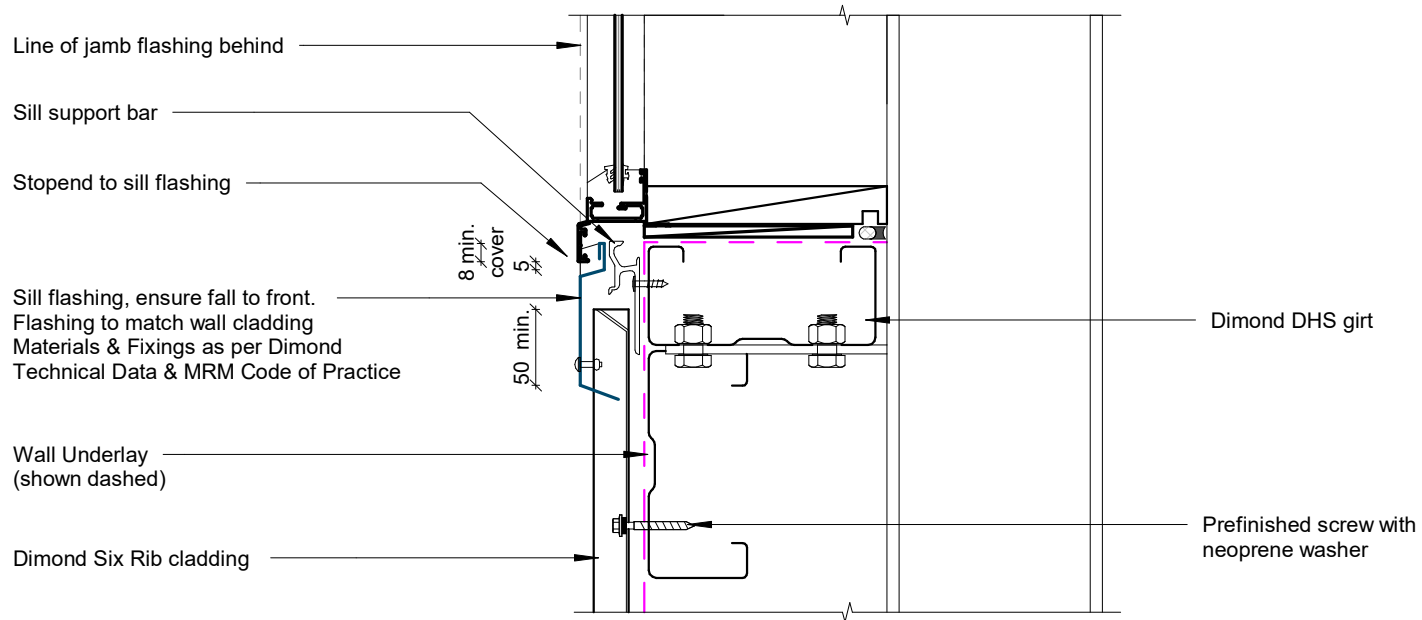
Six Rib Commercial Vertical Cladding



## Window / Door Jamb Detail

Rev: 1

Six Rib Commercial Vertical Cladding



# Window Sill Detail

Rev: 1

Six Rib Commercial Vertical Cladding



©Dimond 2023, all rights reserved. The information and specifications contained in this document are proprietary to Dimond and may not be used other than for the purpose of designing or building a roof or roofing system solely using products supplied or approved by Dimond ("Permitted Purpose"). You may copy this document solely for the Permitted Purpose, but may not otherwise copy, publish, distribute or modify this document without Dimond's prior written consent. Dimond will not be liable for any use of this document or information and specifications contained in this document, other than for the Permitted Purpose

Date: Sep 2025 Scale: 1 : 5 Sheet: 6RCVC13