

# SIX RIB

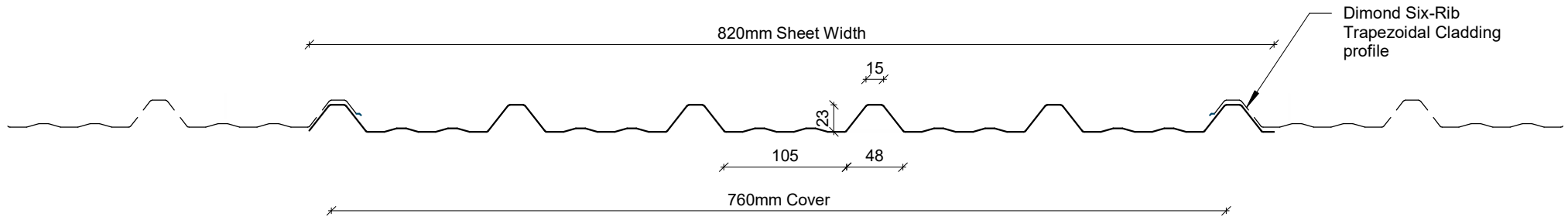
## COMMERCIAL HORIZONTAL WALL CLADDING

### DETAILS:

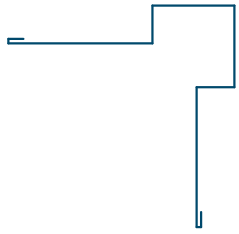
### REV: DATE:

6RCHC00	Cover Sheet	1	Oct 2025
6RCHC01	Profile Summary	1	Oct 2025
6RCHC02	Typical Flashing Detail	1	Oct 2025
6RCHC03	Barge Detail	1	Oct 2025
6RCHC04	Wall to Roof Transverse Detail	1	Oct 2025
6RCHC05	Wall to Roof Detail	1	Oct 2025
6RCHC06	Box Gutter Detail	1	Oct 2025
6RCHC07	Wall to Roof Apex Detail	1	Oct 2025
6RCHC08	External Corner Detail	1	Oct 2025
6RCHC09	Internal Corner Detail	1	Oct 2025
6RCHC10	Base Detail	1	Oct 2025
6RCHC11	Window / Door Head Detail	1	Oct 2025
6RCHC12	Window / Door Jamb Detail	1	Oct 2025
6RCHC13	Window Sill Detail	1	Oct 2025

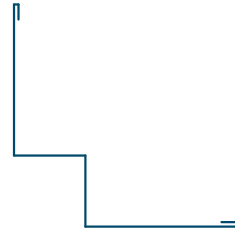
PROFILE OVERVIEW	
<b>RIB TYPE</b>	Low
<b>RIBS PER SHEET</b>	6 Ribs per sheet
<b>WIDTH</b>	760mm Cover, 820mm Sheet



## Profile Summary



External Corner Flashing



Internal Corner Flashing



Base Flashing



Window Sill Flashing



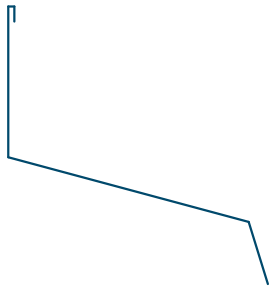
Window Head Flashing



Window Jamb Flashing



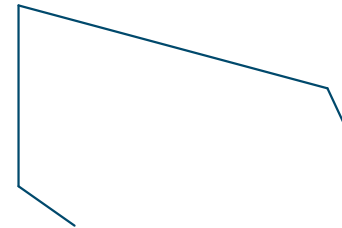
Eaves Flashing



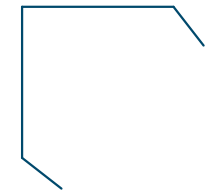
Wall to Roof Flashing 1



Wall to Roof Flashing 2



Wall Roof to Wall Apex Flashing



Barge Flashing

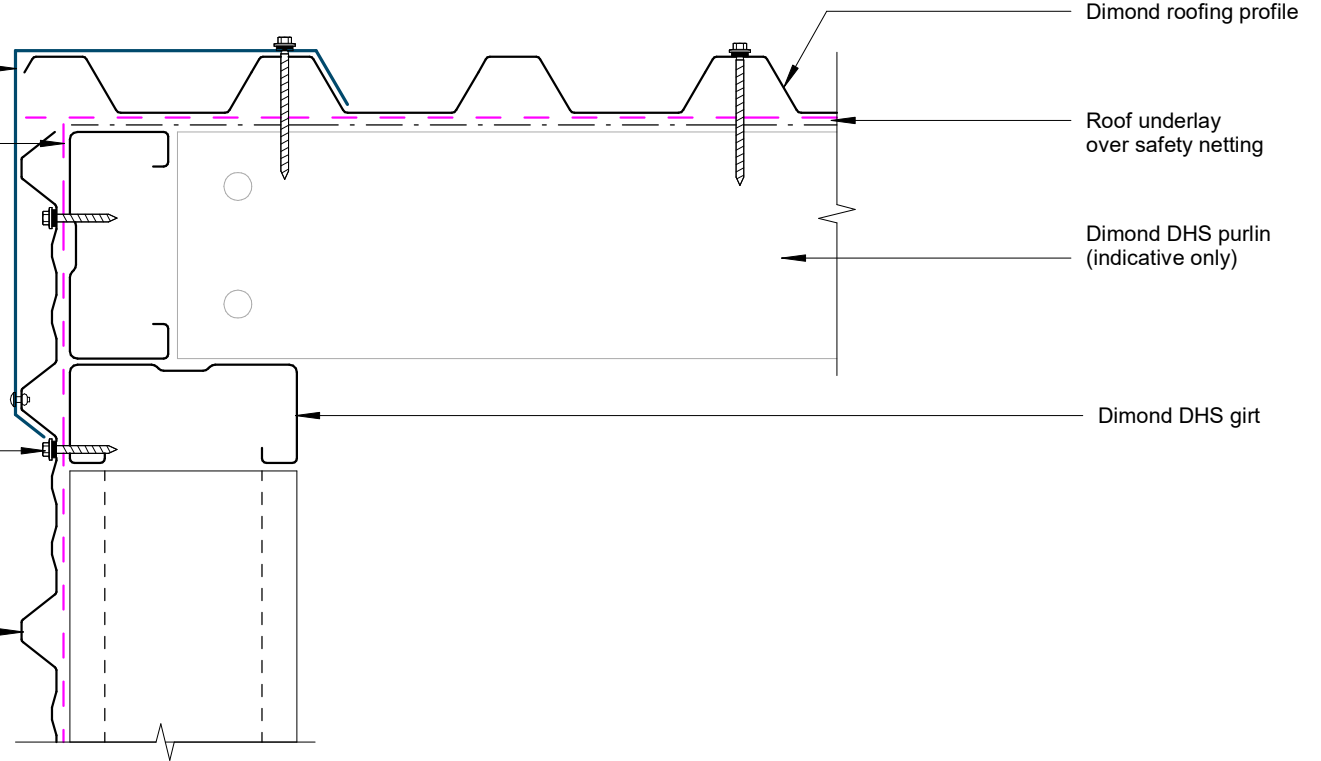
## Typical Flashing Detail

Barge flashing to match roofing.  
Materials & Fixings as per Dimond  
Technical Data & MRM Code of Practice

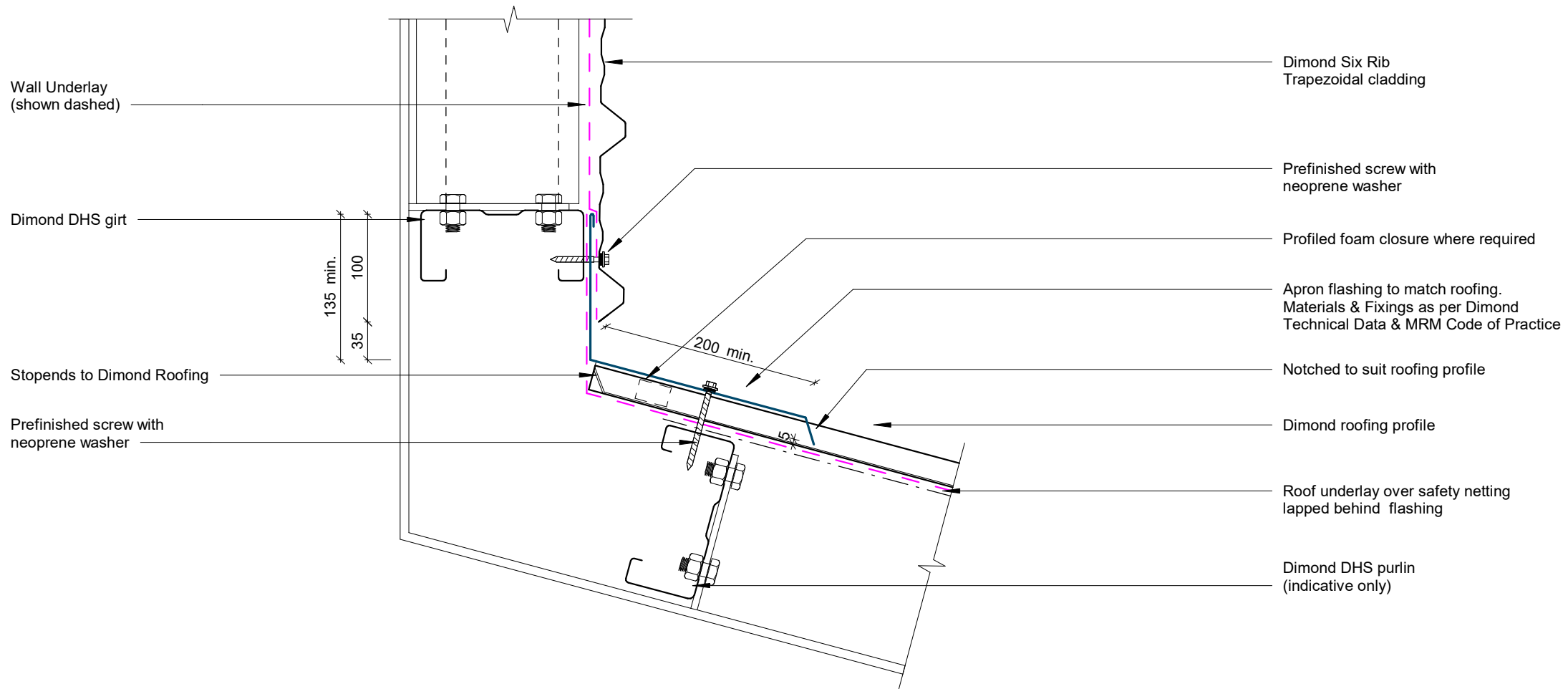
Wall Underlay  
(shown dashed)

Prefinished screw with  
neoprene washer

Dimond Six Rib  
Trapezoidal cladding



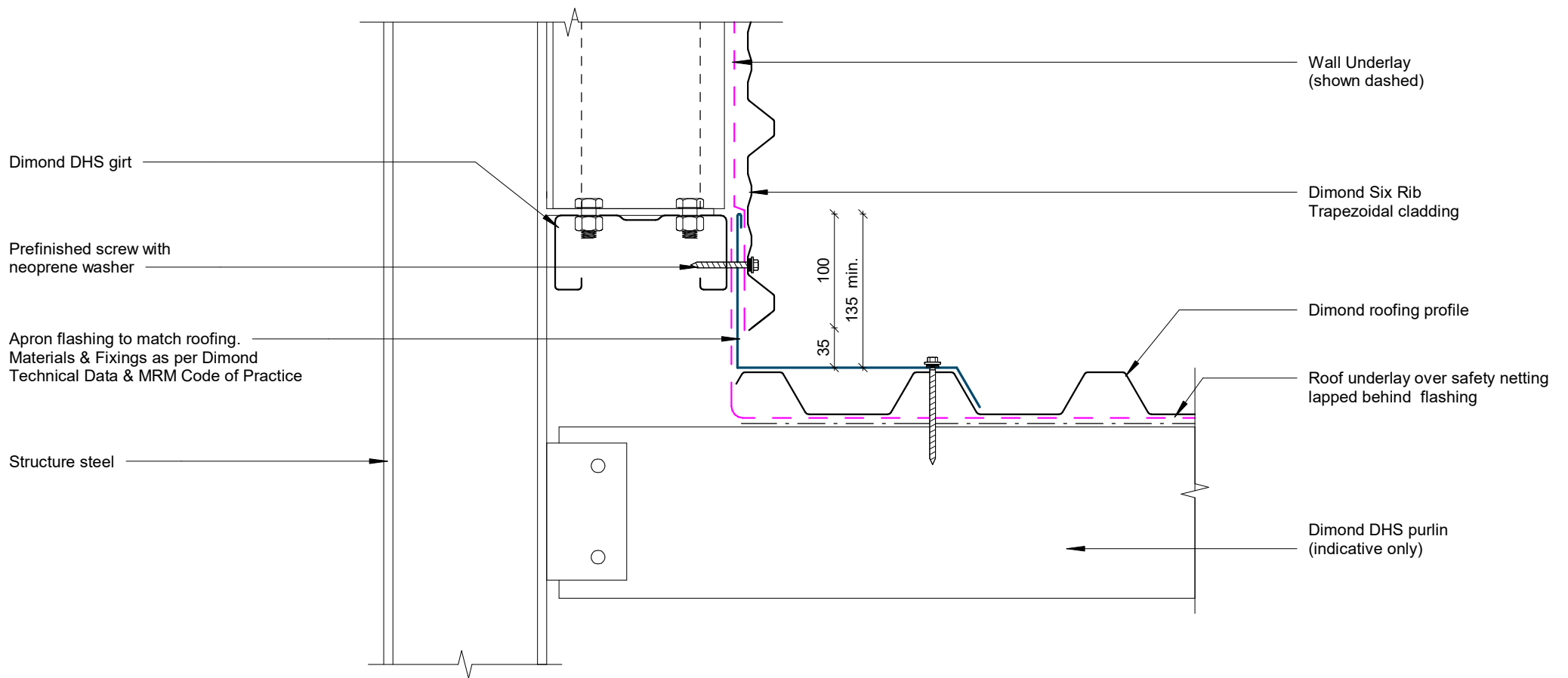
## Barge Detail



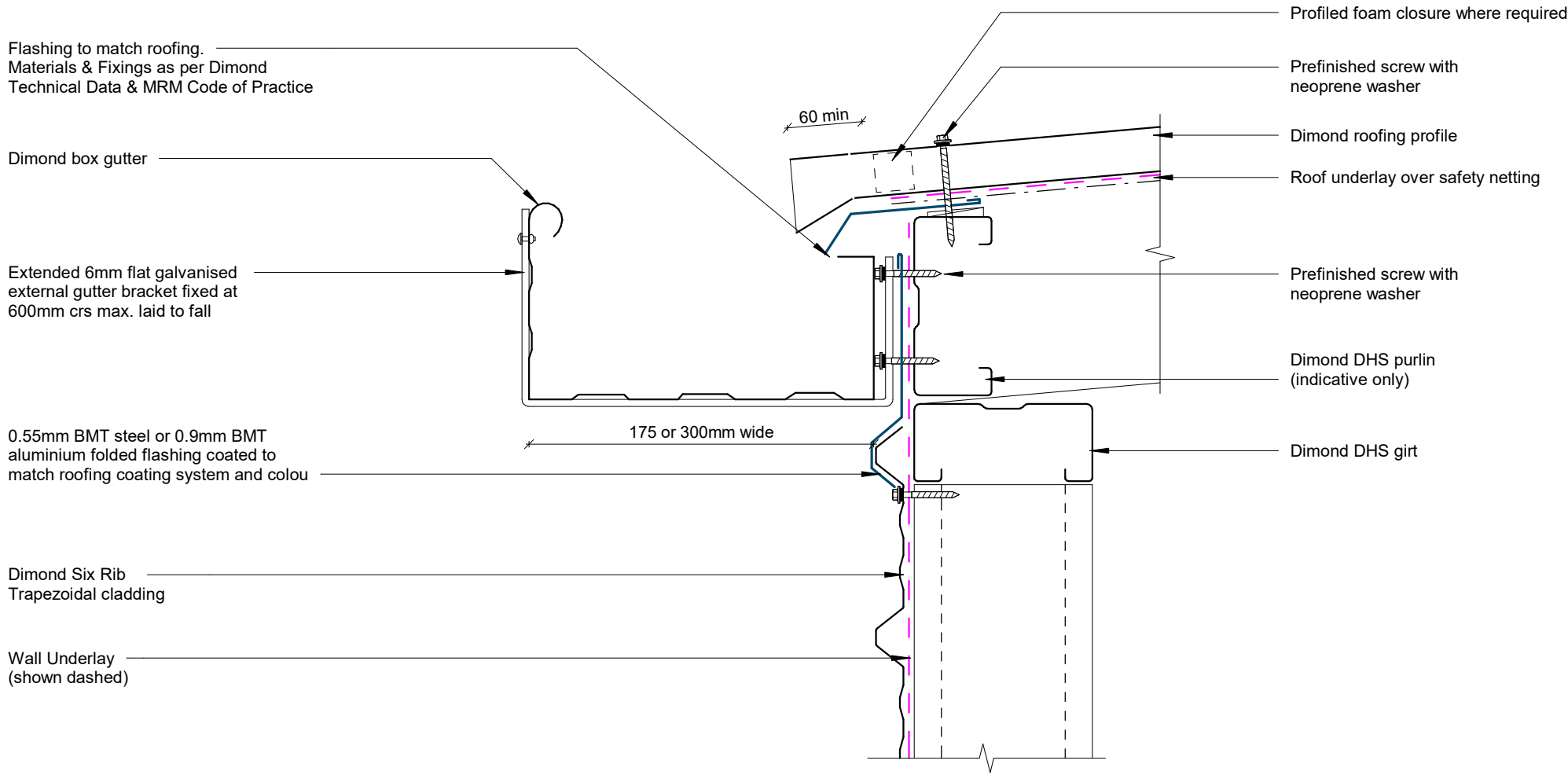
## Wall to Roof Transverse Detail

Rev: 1

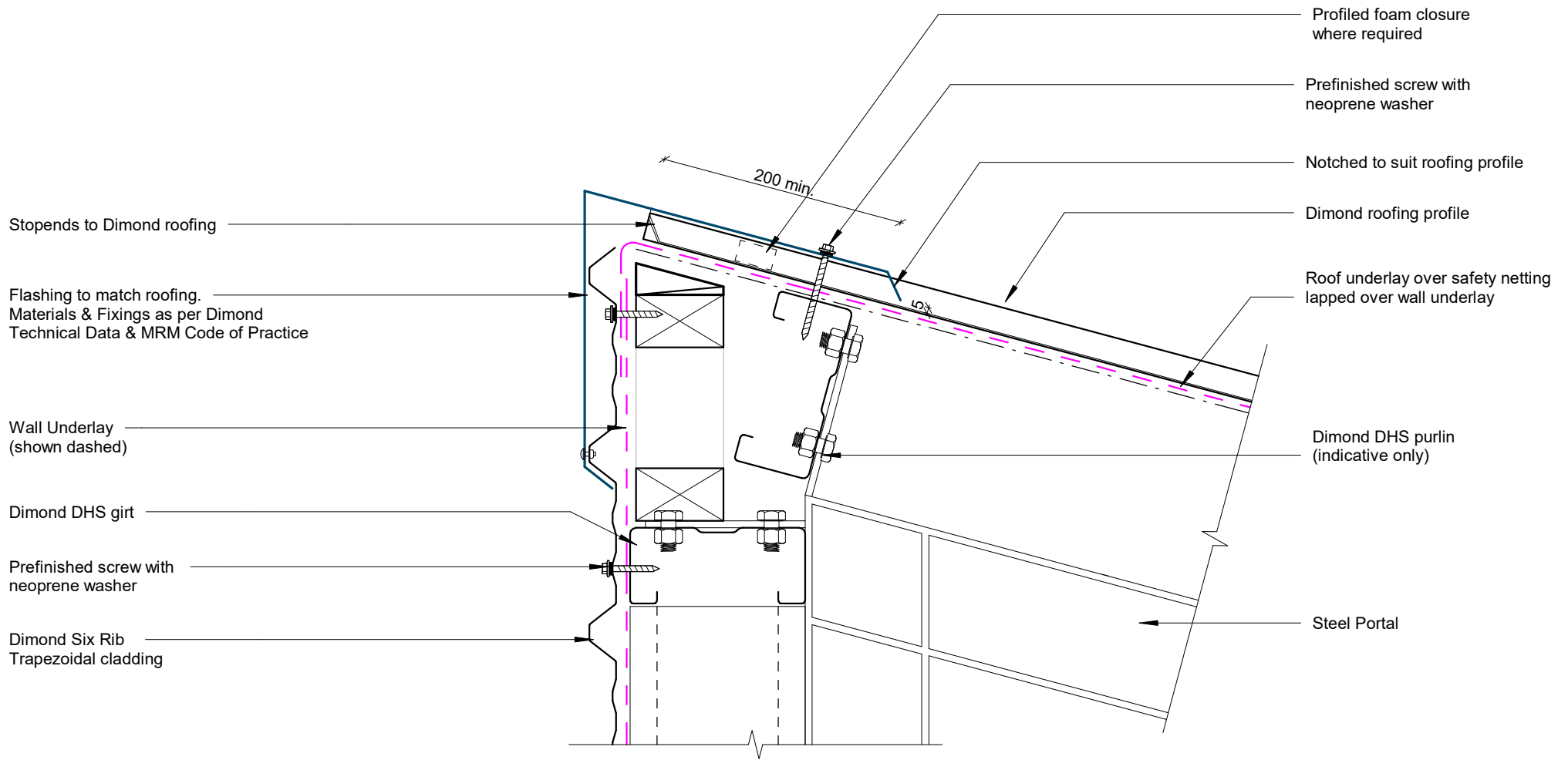
Six Rib Commercial Horizontal Cladding



## Wall to Roof Detail



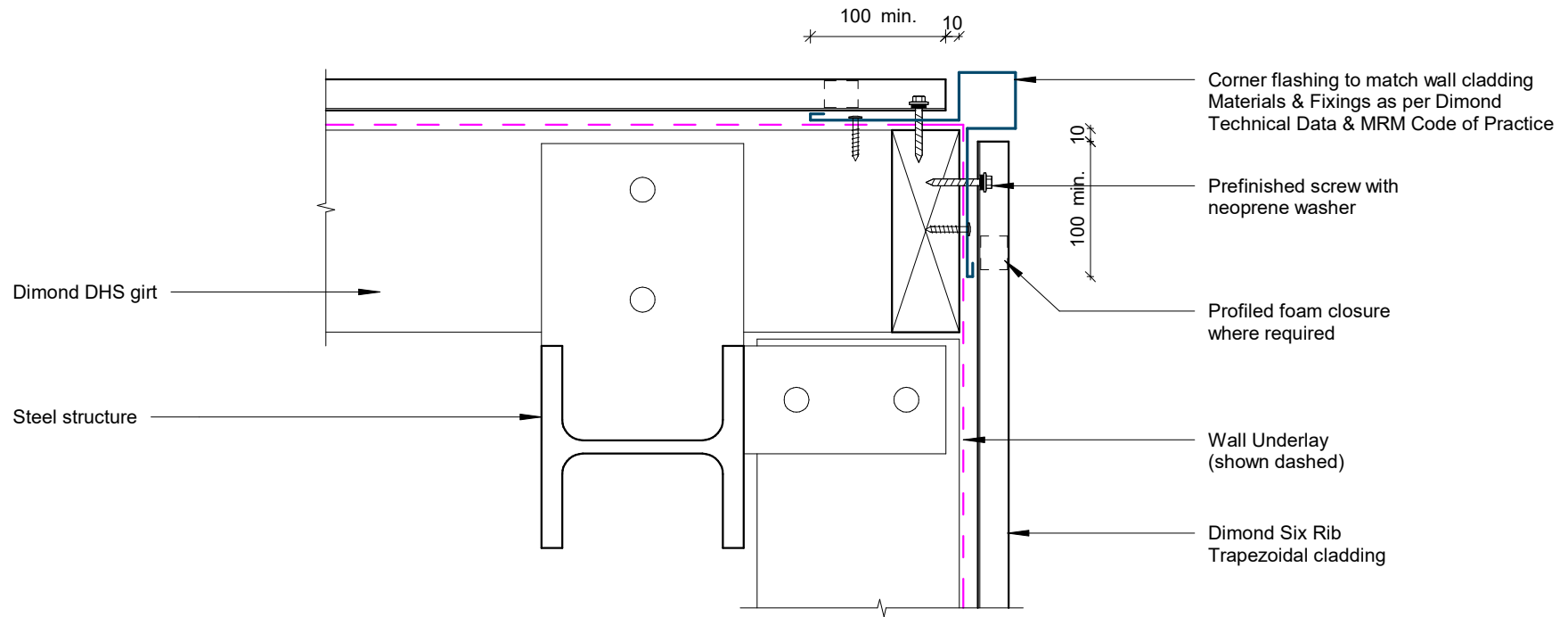
## Box Gutter Detail



## Wall to Roof Apex Detail

Rev: 1

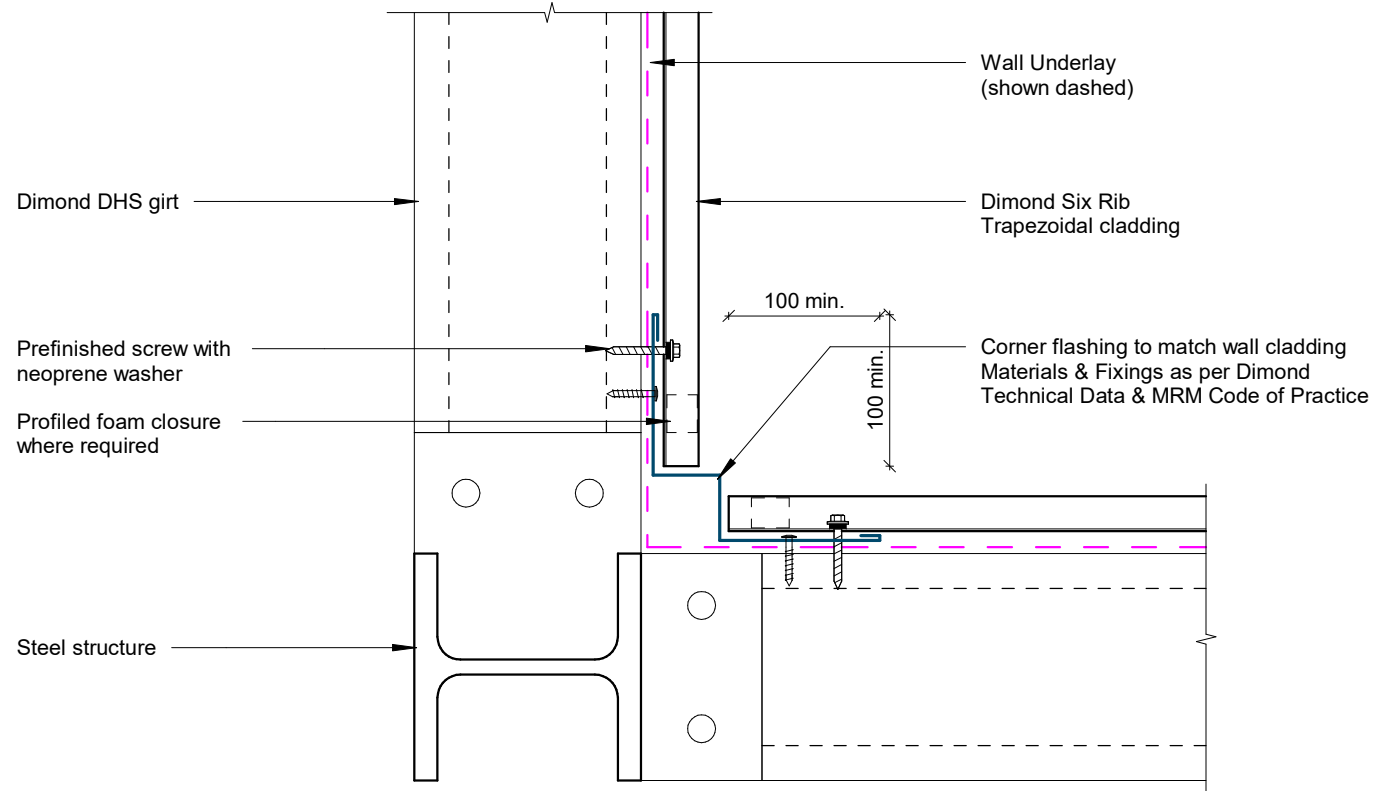
Six Rib Commercial Horizontal Cladding



## External Corner Detail

Rev: 1

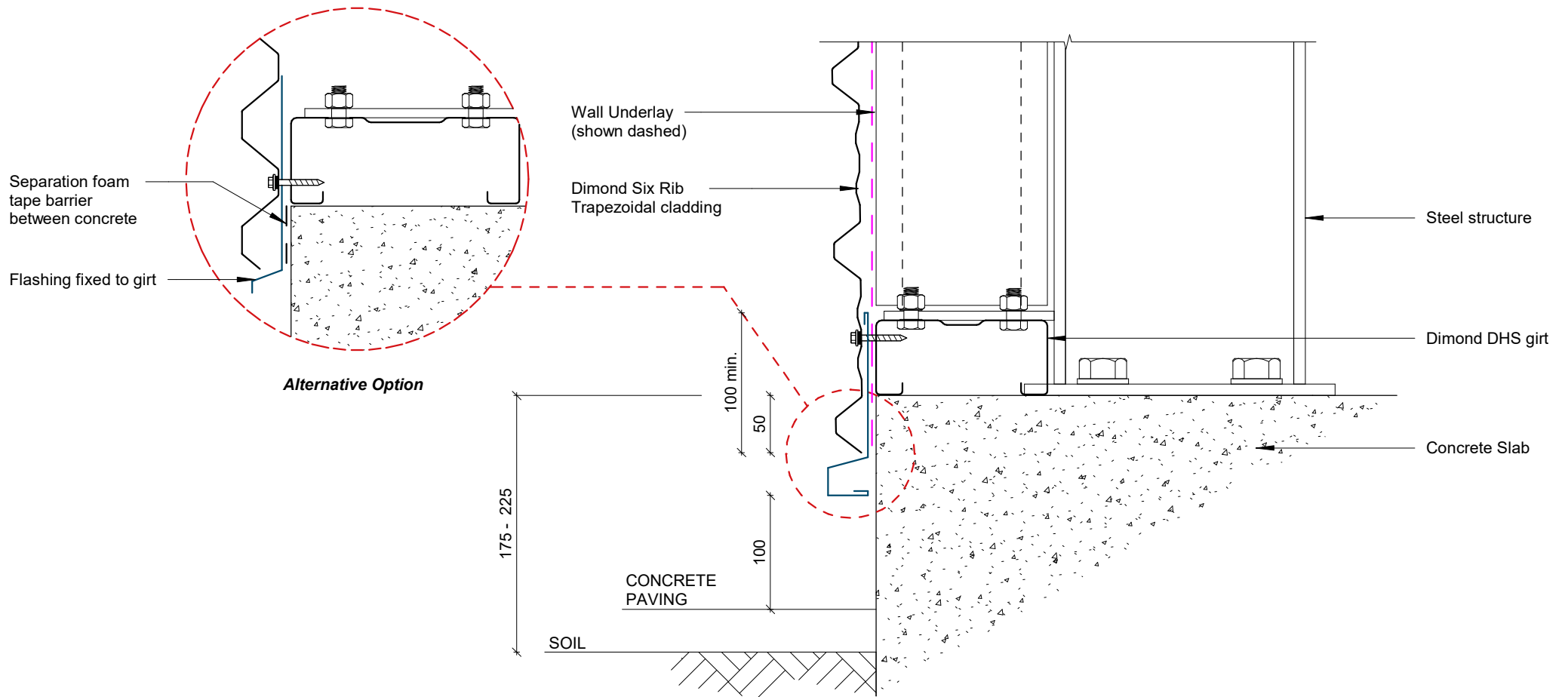
Six Rib Commercial Horizontal Cladding



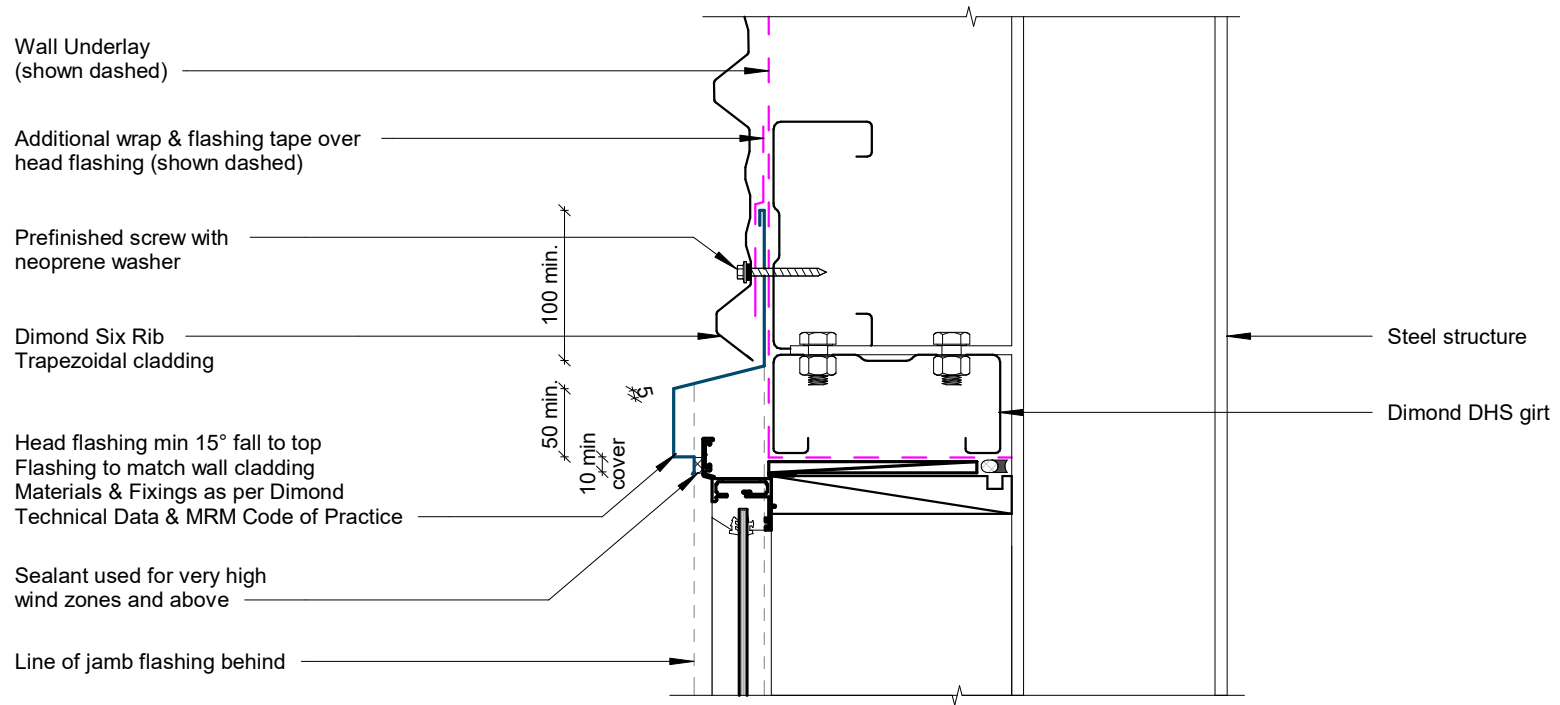
## Internal Corner Detail

Rev: 1

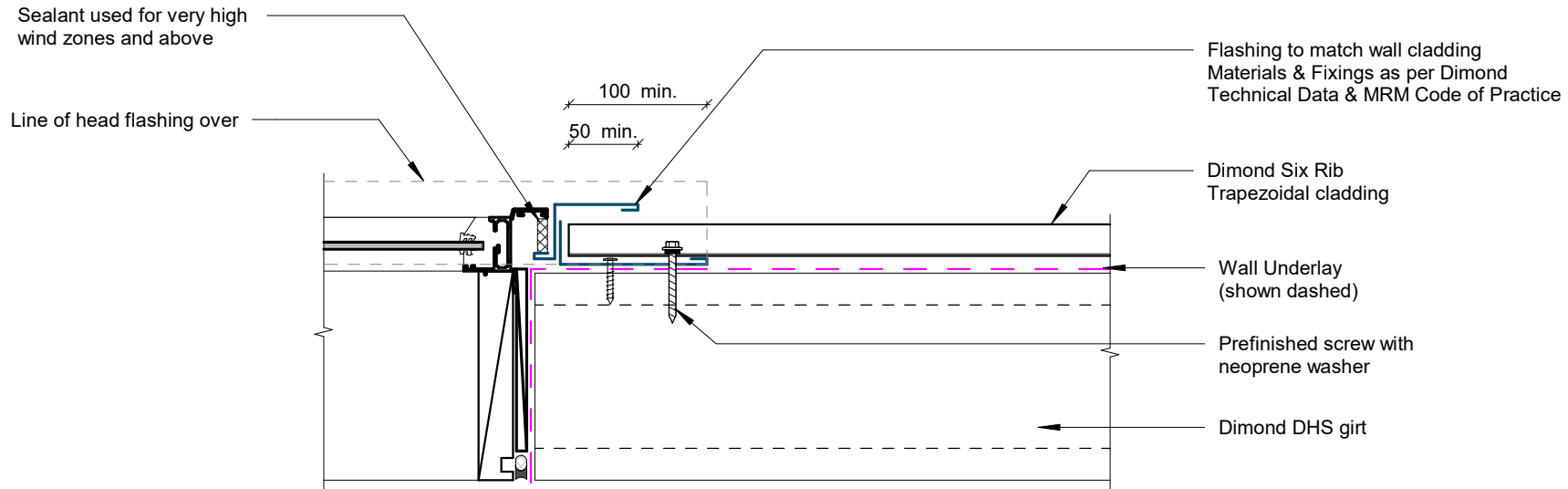
Six Rib Commercial Horizontal Cladding



## Base Detail



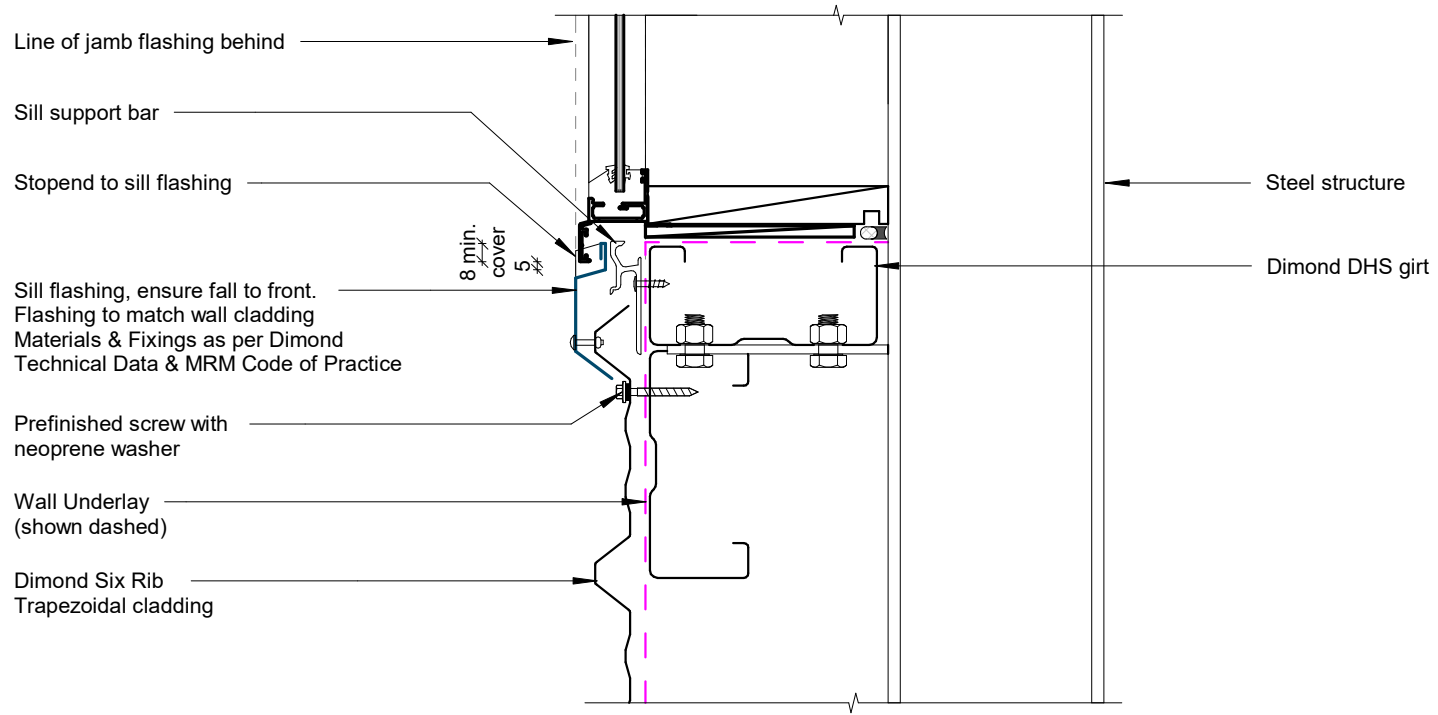
## Window / Door Head Detail



## Window / Door Jamb Detail

Rev: 1

Six Rib Commercial Horizontal Cladding



# Window Sill Detail