

# LT7

## RESIDENTIAL HORIZONTAL WALL CLADDING

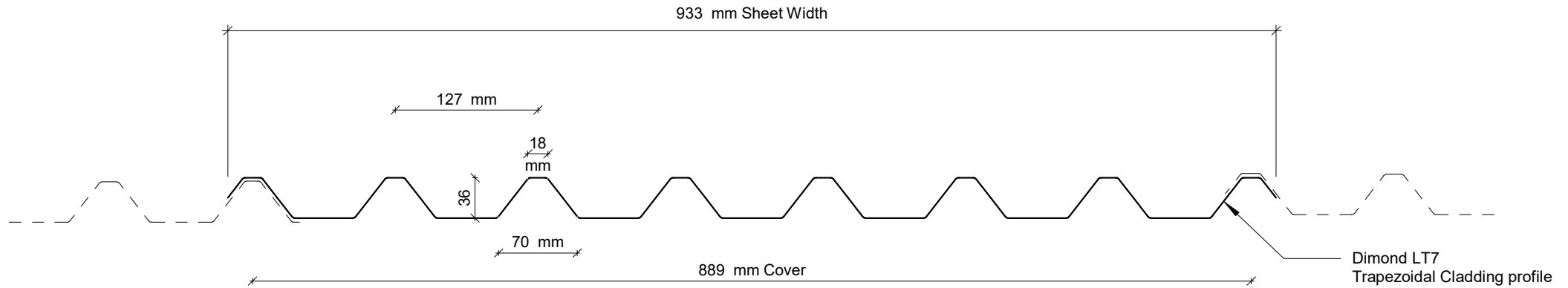
### DETAILS:

### REV:

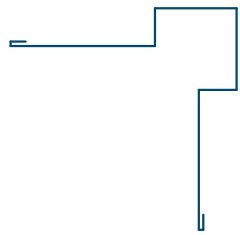
### DATE:

|         |                                      |   |           |
|---------|--------------------------------------|---|-----------|
| LTRHC00 | Cover Sheet                          | 1 | July 2025 |
| LTRHC01 | Profile Summary                      | 1 | July 2025 |
| LTRHC02 | Typical Flashing Details             | 1 | July 2025 |
| LTRHC03 | Barge Flashing Detail                | 1 | July 2025 |
| LTRHC04 | External Corner Detail               | 1 | July 2025 |
| LTRHC05 | Internal Corner Detail               | 1 | July 2025 |
| LTRHC06 | Base Detail                          | 1 | July 2025 |
| LTRHC07 | Soffit Detail                        | 1 | July 2025 |
| LTRHC08 | Window/ Door Head Detail             | 1 | July 2025 |
| LTRHC09 | Window/ Door Jamb Detail             | 1 | July 2025 |
| LTRHC10 | Window Sill Detail                   | 1 | July 2025 |
| LTRHC11 | Meterbox Head Detail                 | 1 | July 2025 |
| LTRHC12 | Meterbox Jamb Detail                 | 1 | July 2025 |
| LTRHC13 | Meterbox Sill Detail                 | 1 | July 2025 |
| LTRHC14 | Pipe Penetration Detail              | 1 | July 2025 |
| LTRHC15 | Cladding to Concrete Junction Detail | 1 | July 2025 |
| LTRHC16 | Cladding to Brick Junction Detail    | 1 | July 2025 |
| LTRHC17 | Cladding to Panel Junction Detail    | 1 | July 2025 |
| LTRHC18 | 3D Window Flashing Detail            | 1 | July 2025 |

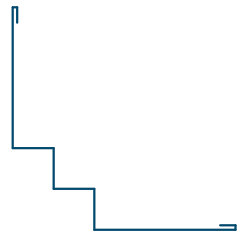
| PROFILE OVERVIEW |                          |
|------------------|--------------------------|
| MINIMUM PITCH    | 3°                       |
| RIB TYPE         | High                     |
| RIBS PER SHEET   | 7 Ribs per sheet         |
| WIDTH            | 889mm Cover, 933mm Sheet |



## Profile Summary



External Corner Flashing



Internal Corner Flashing



Window Head Flashing



Barge Flashing



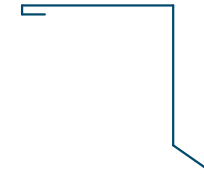
Window Sill Flashing



Base Flashing



Window Jamb Flashing



Soffit Flashing

## Typical Flashing Details

Rev: 1

LT7 Residential Horizontal Cladding

Barge flashing to match roofing.  
Materials & Fixings as per Dimond  
Technical Data, E2/AS1 & MRM  
Code of Practice

Cavity Batten

Roof framing  
(indicative only)

Prefinished screw with  
neoprene washer

Dimond LT7 Horizontal  
fixed Wall Cladding profile

Wall Underlay  
(shown dashed)

Wall framing  
(indicative only)

Dimond Roofing Profile

Roof Underlay  
(shown dashed)

Purlins  
(indicative only)

Prefinished screw with  
neoprene washer

Z

| COVER DIMENSIONS<br>AS PER E2/AS1   | Z         |
|---|-----------|
| <b>SITUATION 1</b><br>Low, Medium & High Wind<br>Zones where roof pitch $\geq 10^\circ$<br>(Excludes any soft edge or turn-down)  | 50<br>MIN |
| <b>SITUATION 2</b><br>All roof pitches in Very High zone.<br>Low, Medium & High Wind Zones<br>where roof pitch $\leq 10^\circ$<br>(Excludes any soft edge or turn-down) | 70<br>MIN |
| <b>SITUATION 3</b><br>All roof pitches in Extra High zone.<br>(Excludes any soft edge or turn-down)   | 90<br>MIN |

**GENERAL NOTE**

Cavity battens or timber framing that contain copper must be separated from steel cladding by a strip of wall or roof underlay or DPC.

# Barge Flashing Detail

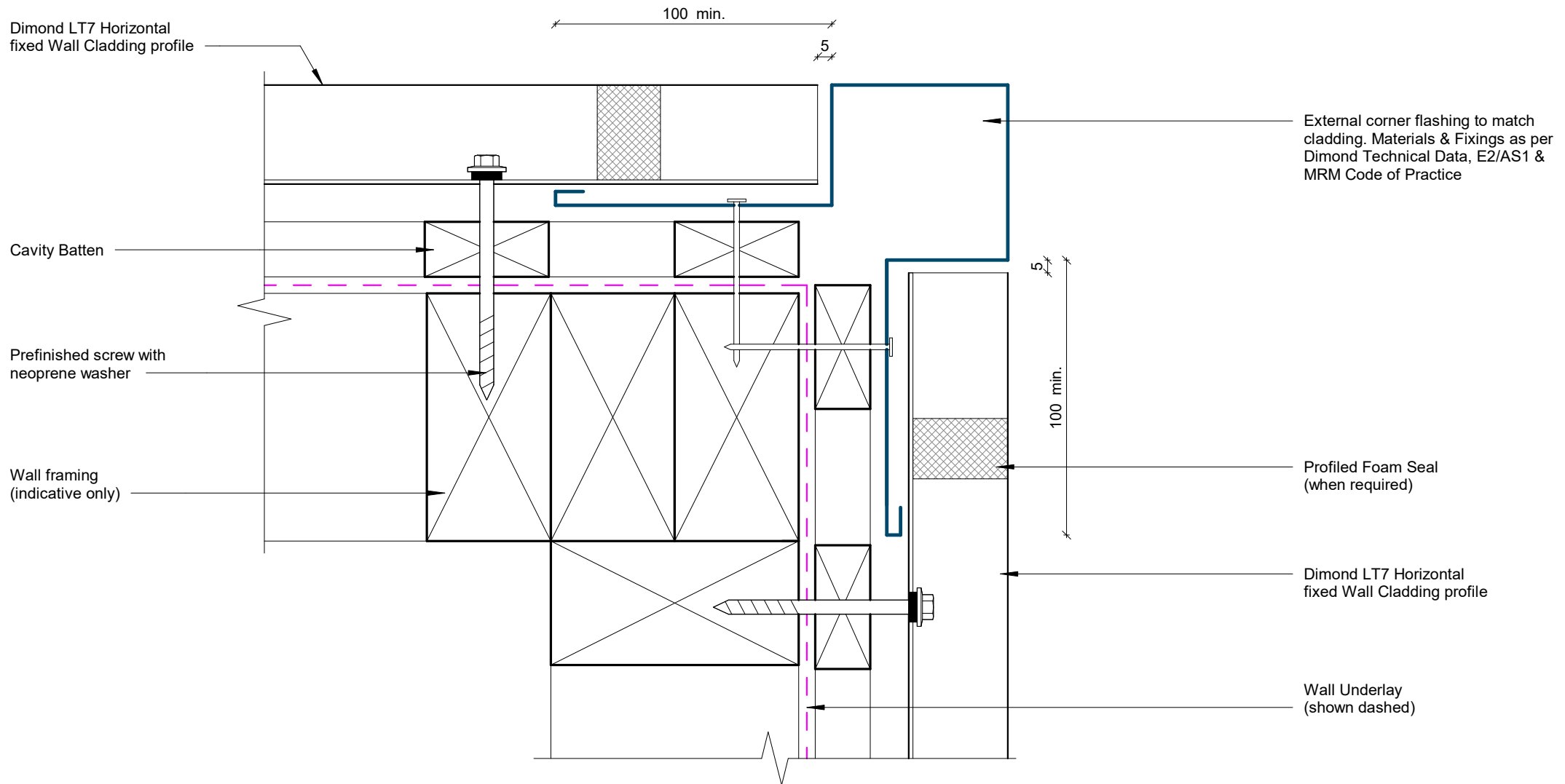
Rev: 1

LT7 Residential Horizontal Cladding



©Dimond 2023, all rights reserved. The information and specifications contained in this document are proprietary to Dimond and may not be used other than for the purpose of designing or building a roof or roofing system solely using products supplied or approved by Dimond ("Permitted Purpose"). You may copy this document solely for the Permitted Purpose, but may not otherwise copy, publish, distribute or modify this document without Dimond's prior written consent. Dimond will not be liable for any use of this document or information and specifications contained in this document, other than for the Permitted Purpose

Date: July 2025 Scale: 1 : 2 Sheet: LTRHC03



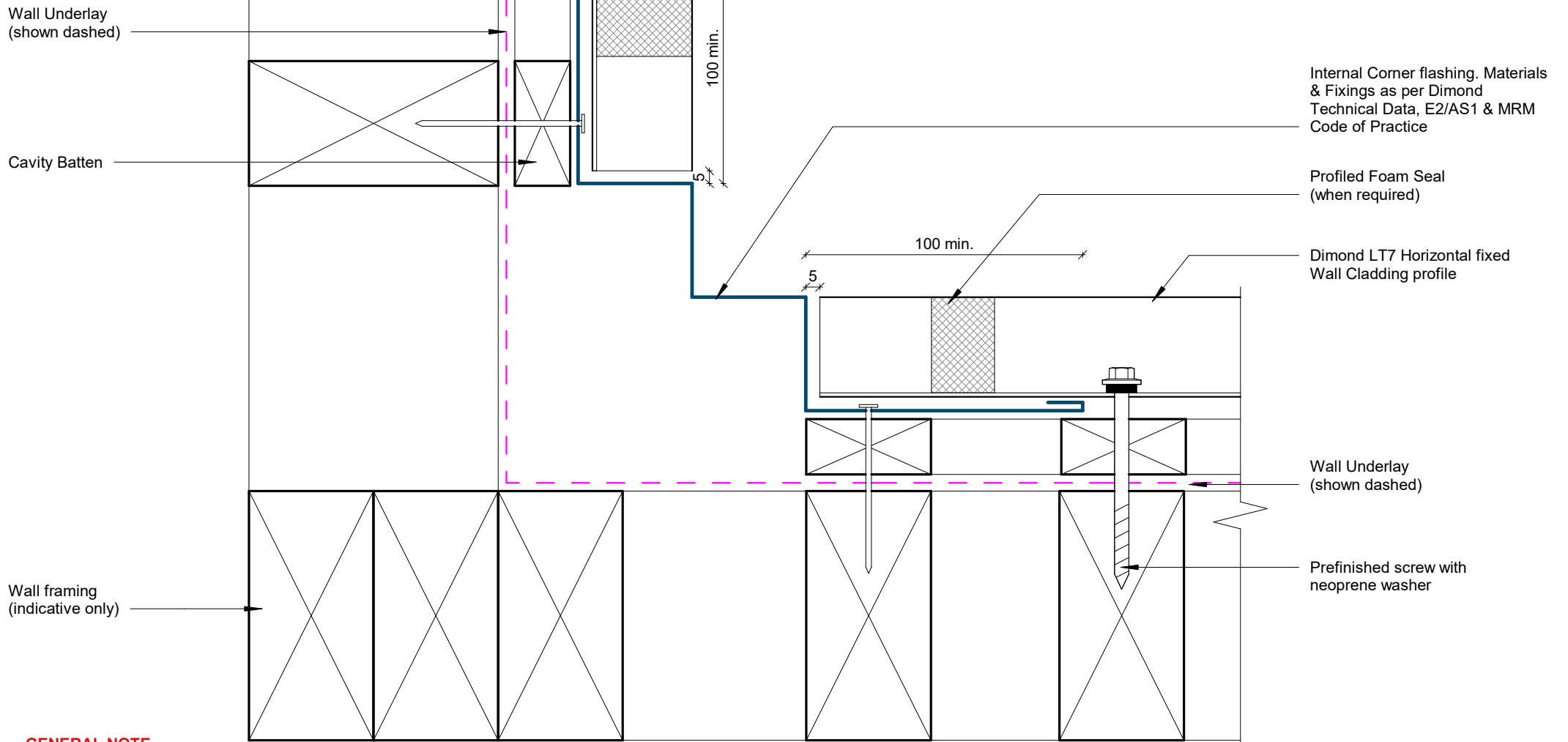
**GENERAL NOTE**

Cavity battens or timber framing that contain copper must be separated from steel cladding by a strip of wall or roof underlay or DPC.

# External Corner Detail

Rev: 1

LT7 Residential Horizontal Cladding



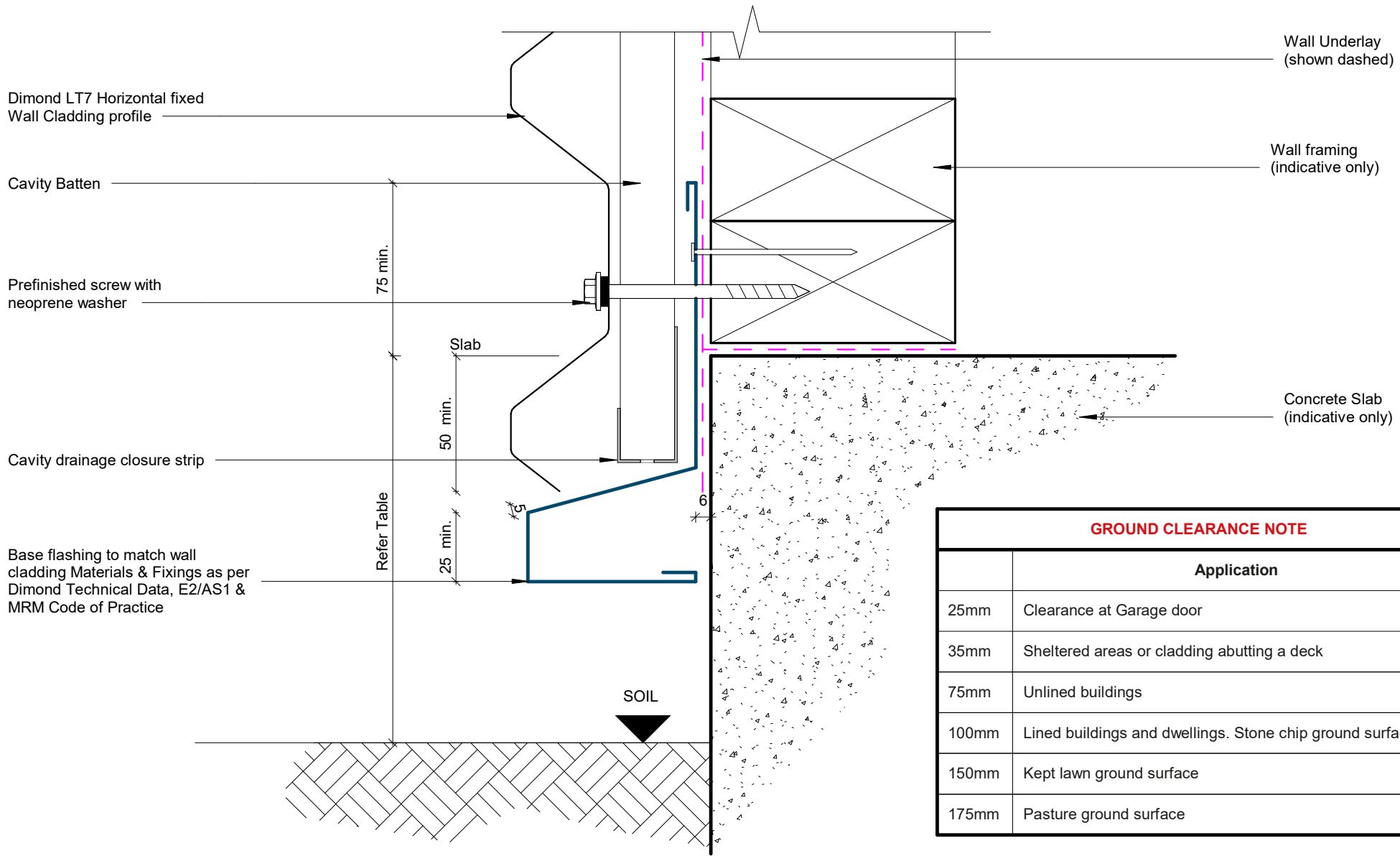
**GENERAL NOTE**

Cavity battens or timber framing that contain copper must be separated from steel cladding by a strip of wall or roof underlay or DPC.

# Internal Corner Detail

Rev: 1

LT7 Residential Horizontal Cladding



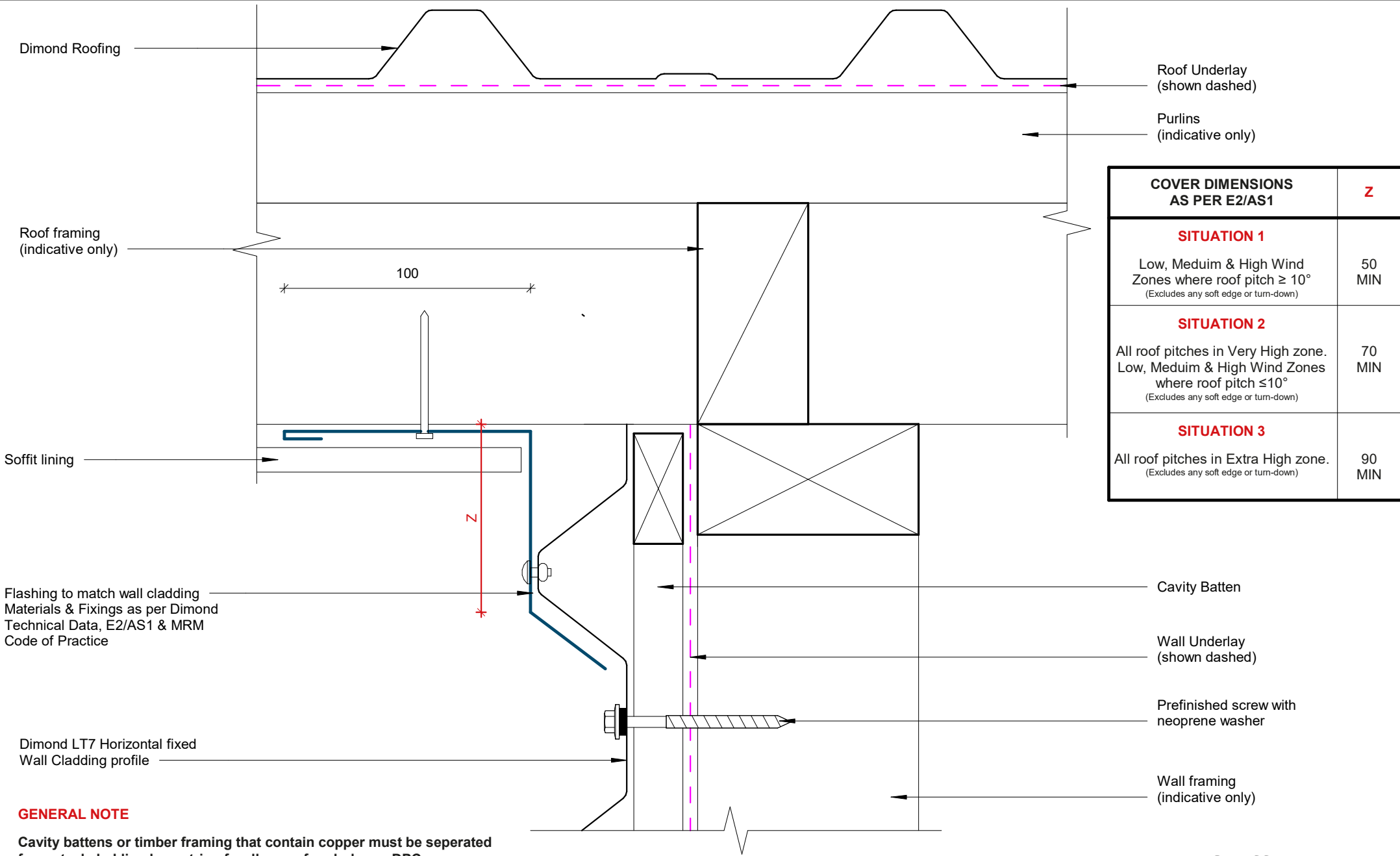
**GROUND CLEARANCE NOTE**

|       | Application  |
|-------|--|
| 25mm  | Clearance at Garage door                                 |
| 35mm  | Sheltered areas or cladding abutting a deck              |
| 75mm  | Unlined buildings  |
| 100mm | Lined buildings and dwellings. Stone chip ground surface |
| 150mm | Kept lawn ground surface                                 |
| 175mm | Pasture ground surface                                   |

**GENERAL NOTE**

Cavity battens or timber framing that contain copper must be separated from steel cladding by a strip of wall or roof underlay or DPC.

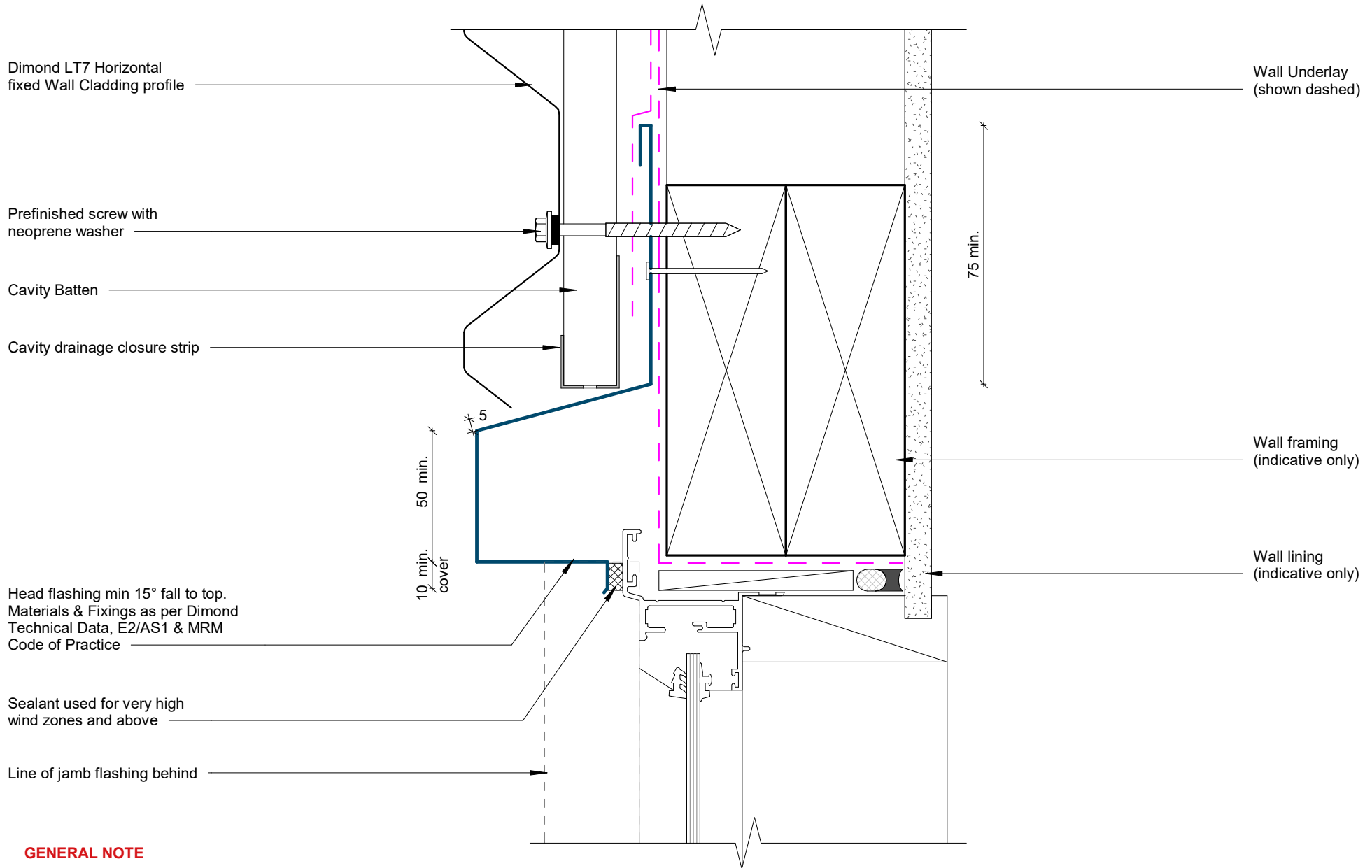
**Base Detail**



## Soffit Detail

Rev: 1

LT7 Residential Horizontal Cladding



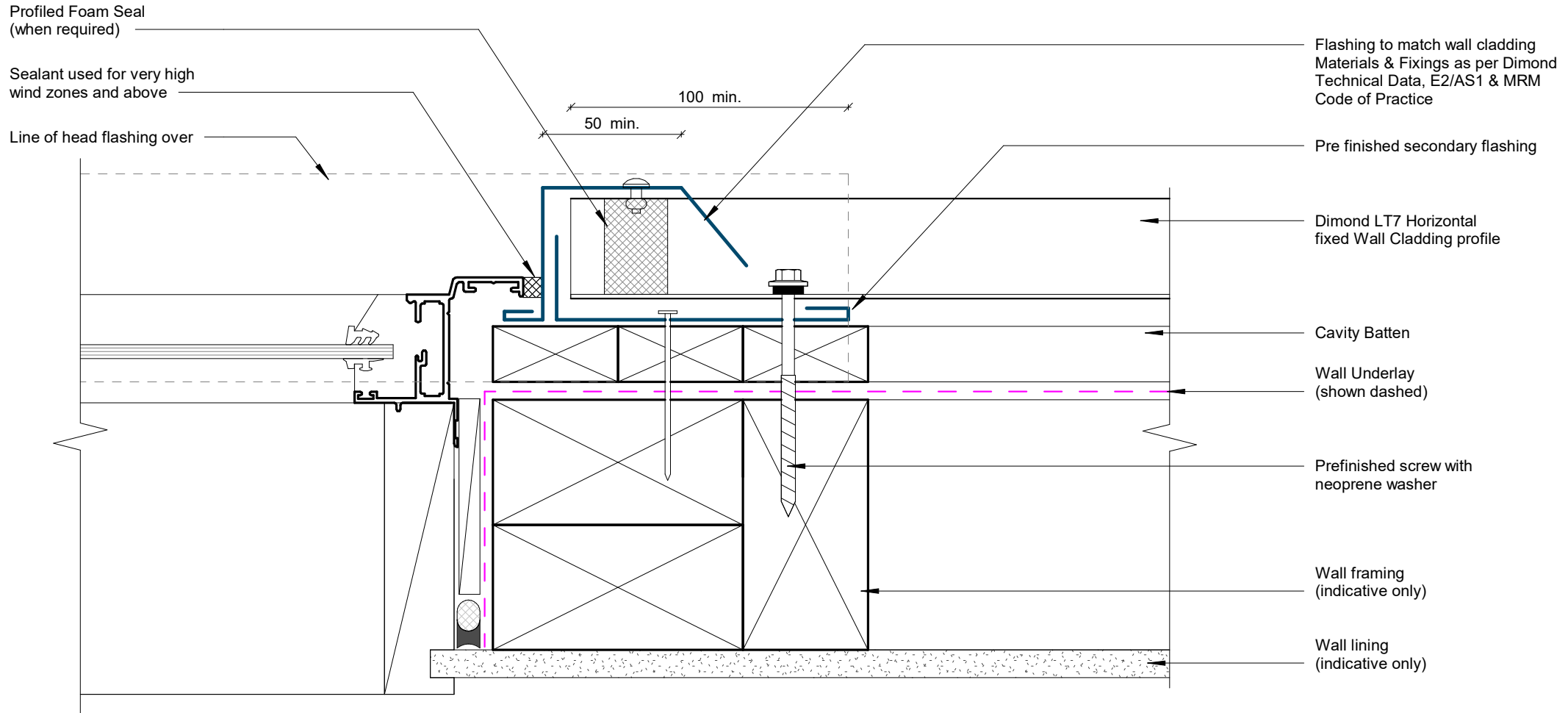
**GENERAL NOTE**

Cavity battens or timber framing that contain copper must be separated from steel cladding by a strip of wall or roof underlay or DPC.

# Window/ Door Head Detail

Rev: 1

LT7 Residential Horizontal Cladding



**GENERAL NOTE**

Cavity battens or timber framing that contain copper must be separated from steel cladding by a strip of wall or roof underlay or DPC.

# Window/ Door Jamb Detail

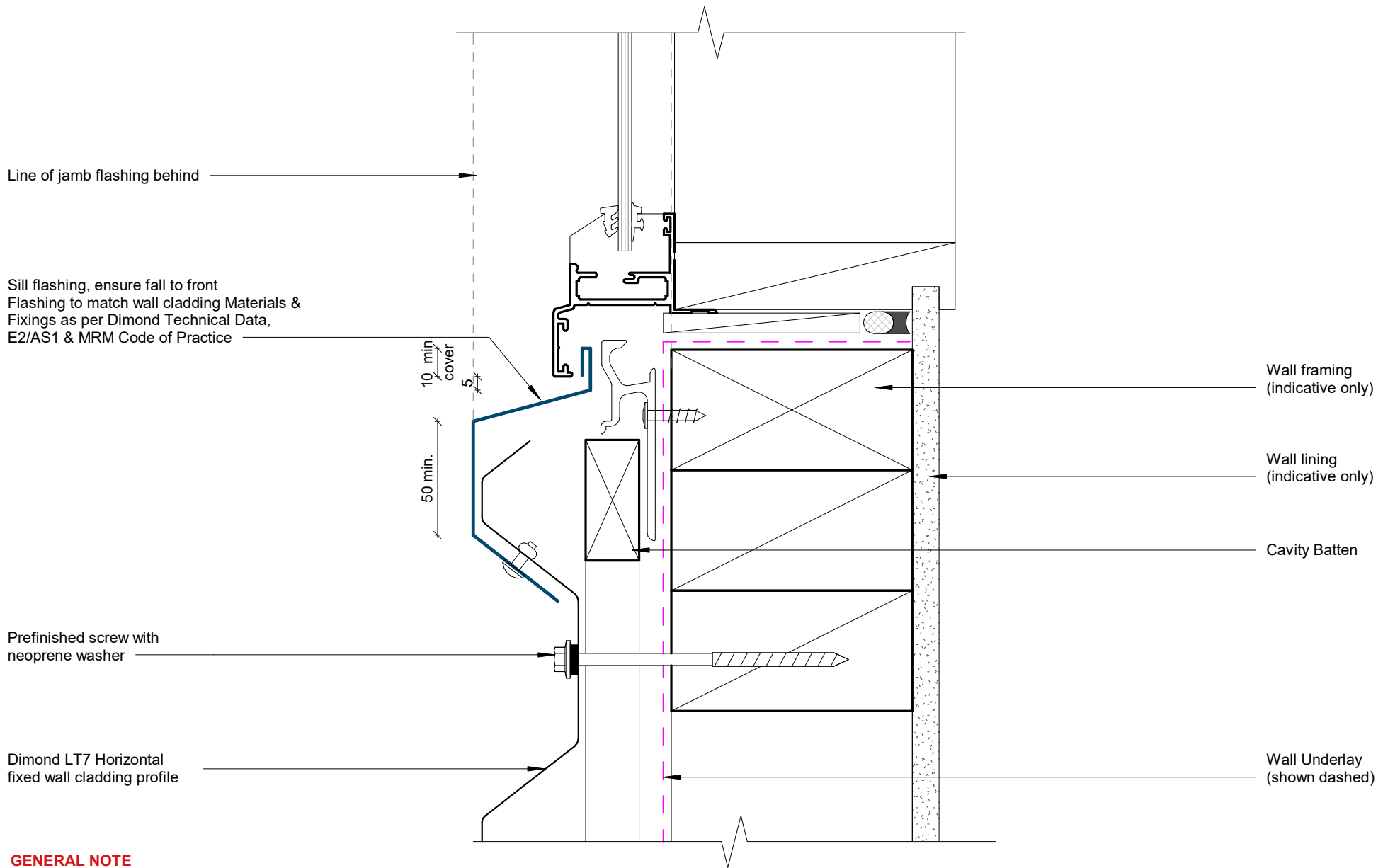
Rev: 1

LT7 Residential Horizontal Cladding



©Dimond 2023, all rights reserved. The information and specifications contained in this document are proprietary to Dimond and may not be used other than for the purpose of designing or building a roof or roofing system solely using products supplied or approved by Dimond ("Permitted Purpose"). You may copy this document solely for the Permitted Purpose, but may not otherwise copy, publish, distribute or modify this document without Dimond's prior written consent. Dimond will not be liable for any use of this document or information and specifications contained in this document, other than for the Permitted Purpose

Date: July 2025 Scale: 1 : 2 Sheet: LTRHC09



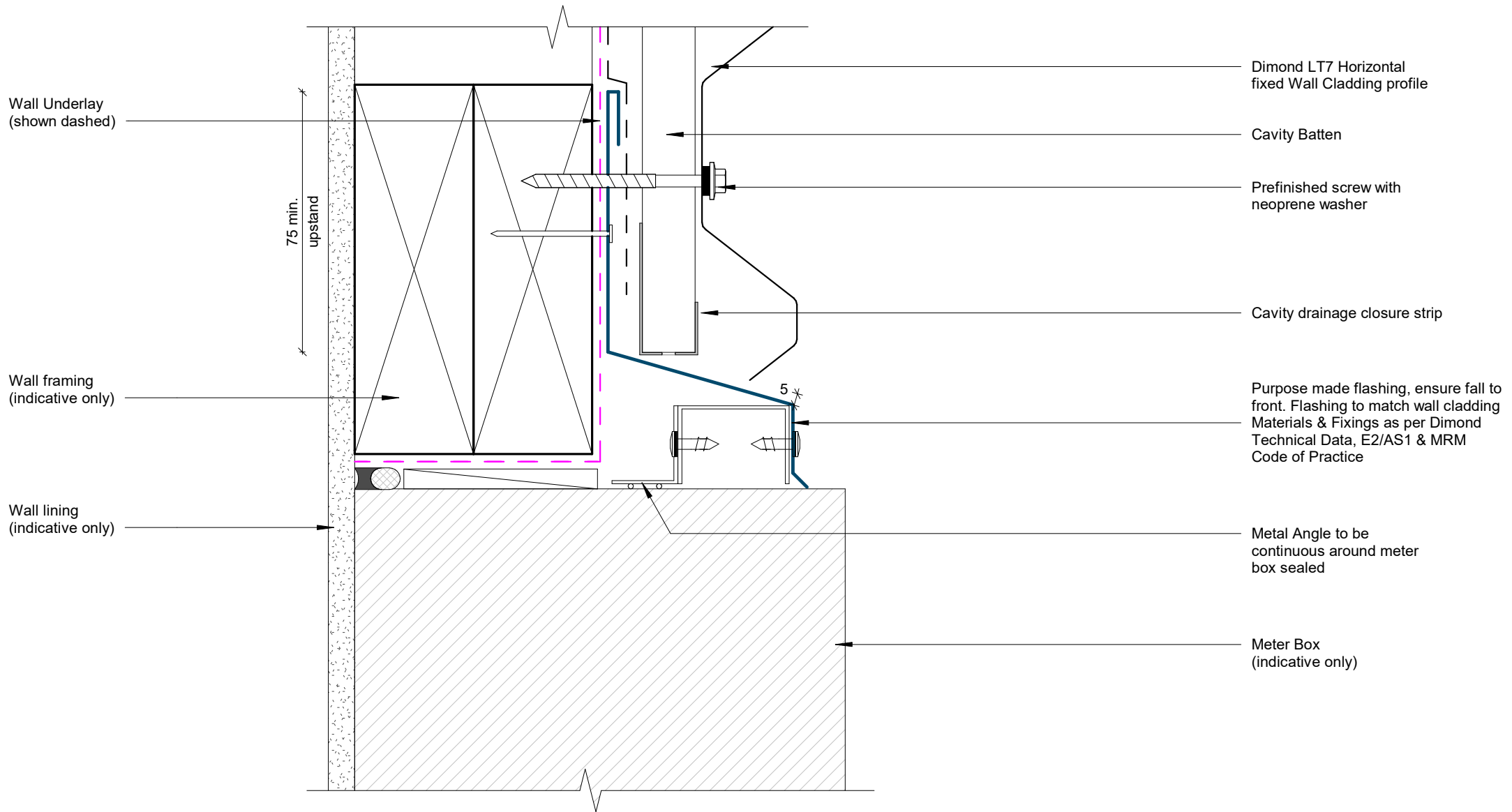
**GENERAL NOTE**

Cavity battens or timber framing that contain copper must be separated from steel cladding by a strip of wall or roof underlay or DPC.

# Window Sill Detail

Rev: 1

LT7 Residential Horizontal Cladding



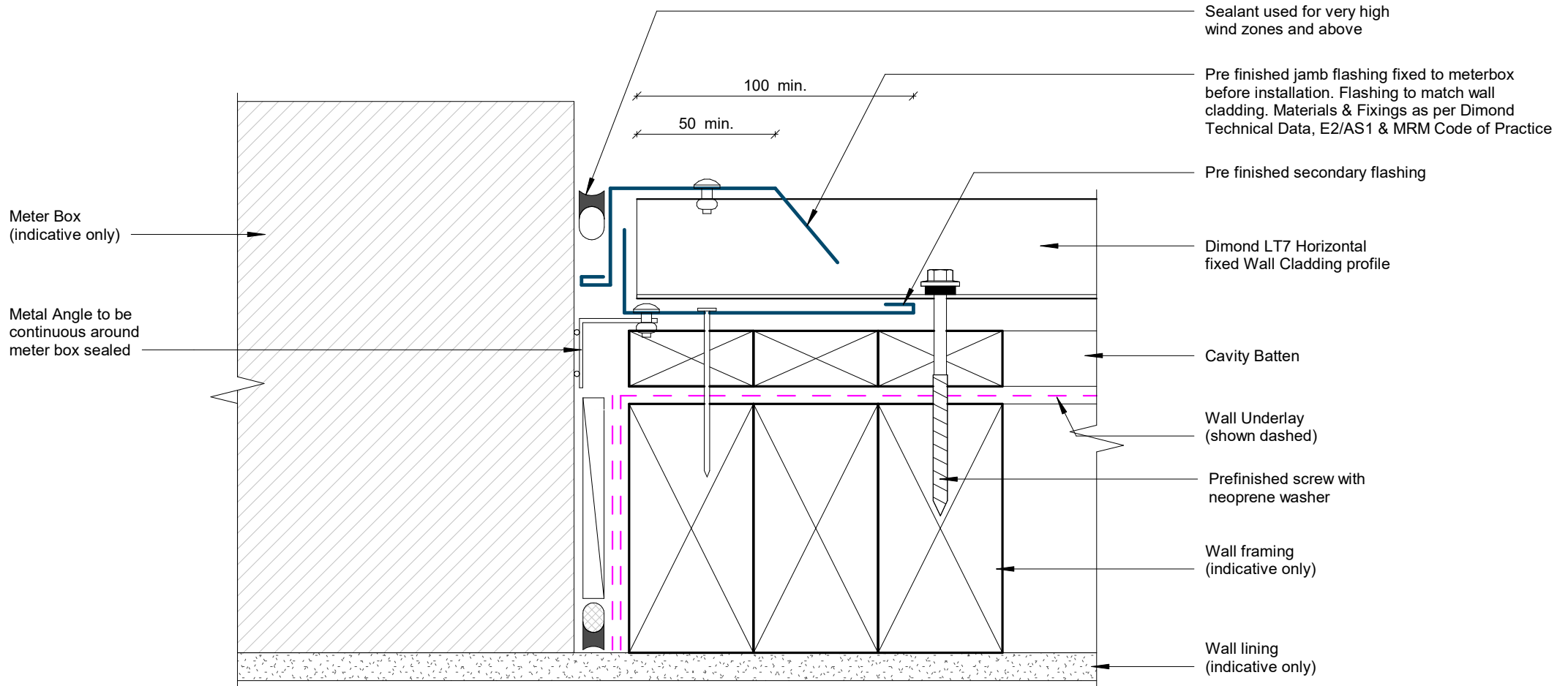
**GENERAL NOTE**

Cavity battens or timber framing that contain copper must be separated from steel cladding by a strip of wall or roof underlay or DPC.

## Meterbox Head Detail

Rev: 1

LT7 Residential Horizontal Cladding



**GENERAL NOTE**

Cavity battens or timber framing that contain copper must be separated from steel cladding by a strip of wall or roof underlay or DPC.

# Meterbox Jamb Detail

Rev: 1

LT7 Residential Horizontal Cladding



©Dimond 2023, all rights reserved. The information and specifications contained in this document are proprietary to Dimond and may not be used other than for the purpose of designing or building a roof or roofing system solely using products supplied or approved by Dimond ("Permitted Purpose"). You may copy this document solely for the Permitted Purpose, but may not otherwise copy, publish, distribute or modify this document without Dimond's prior written consent. Dimond will not be liable for any use of this document or information and specifications contained in this document, other than for the Permitted Purpose

Meter Box  
(indicative only)

Wall lining  
(indicative only)

Air seal  
(indicative only)

Cavity Batten

Wall framing  
(indicative only)

Wall Underlay  
(shown dashed)

Metal Angle to be  
continuous around meter  
box sealed

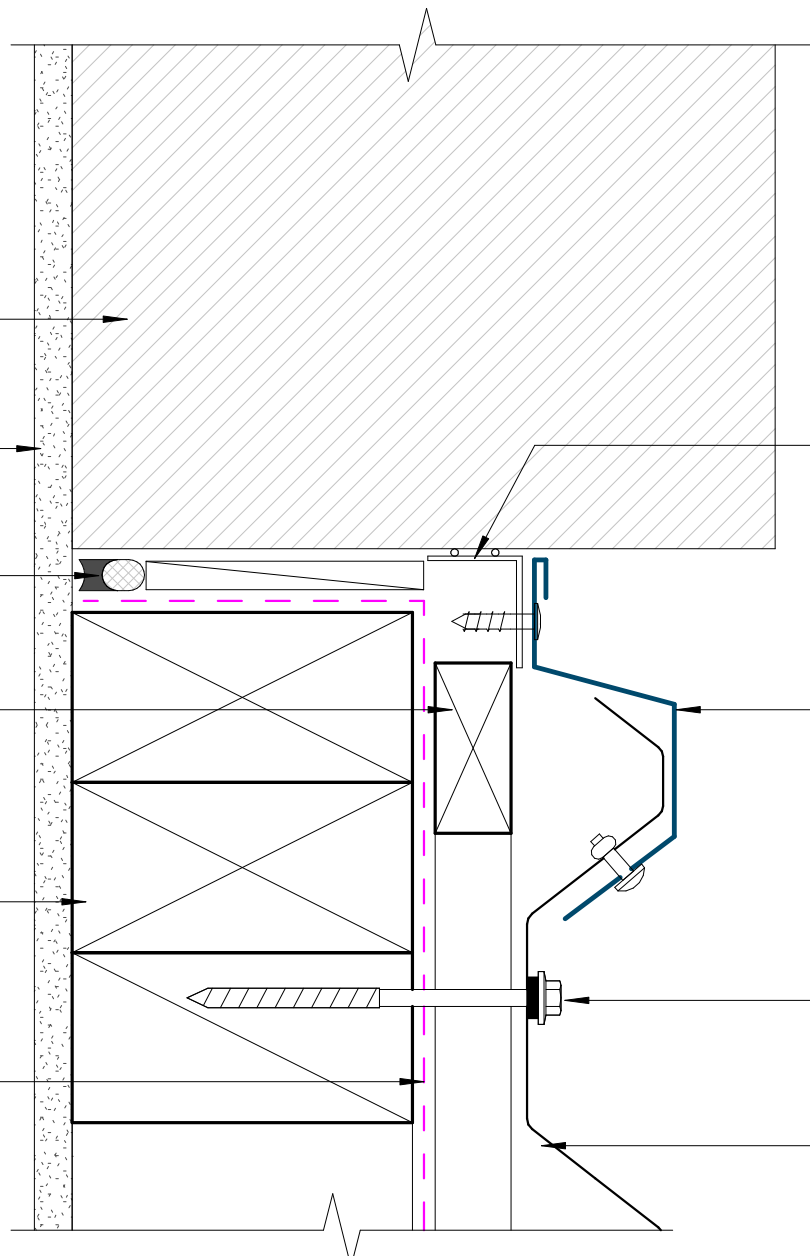
Pre finished flashing, ensure fall to  
front. Flashing to match wall cladding  
Materials & Fixings as per Dimond  
Technical Data, E2/AS1 & MRM  
Code of Practice

Prefinished screw with  
neoprene washer

Dimond LT7 Horizontal  
fixed Wall Cladding profile

**GENERAL NOTE**

Cavity battens or timber framing that contain copper must be separated from steel cladding by a strip of wall or roof underlay or DPC.



# Meterbox Sill Detail

Rev: 1

LT7 Residential Horizontal Cladding

Wall framing  
(indicative only)

Solid blocking around penetration  
with minimum 75mm overlap to  
underlay

Pipe  
(indicative only)

Wall lining  
(indicative only)

Cavity Batten

Dimond LT7 Horizontal  
fixed Wall Cladding profile

Wall Underlay  
(shown dashed)

Flashing tape around pipe  
penetration (shown dashed)

Proprietary Boot flashing

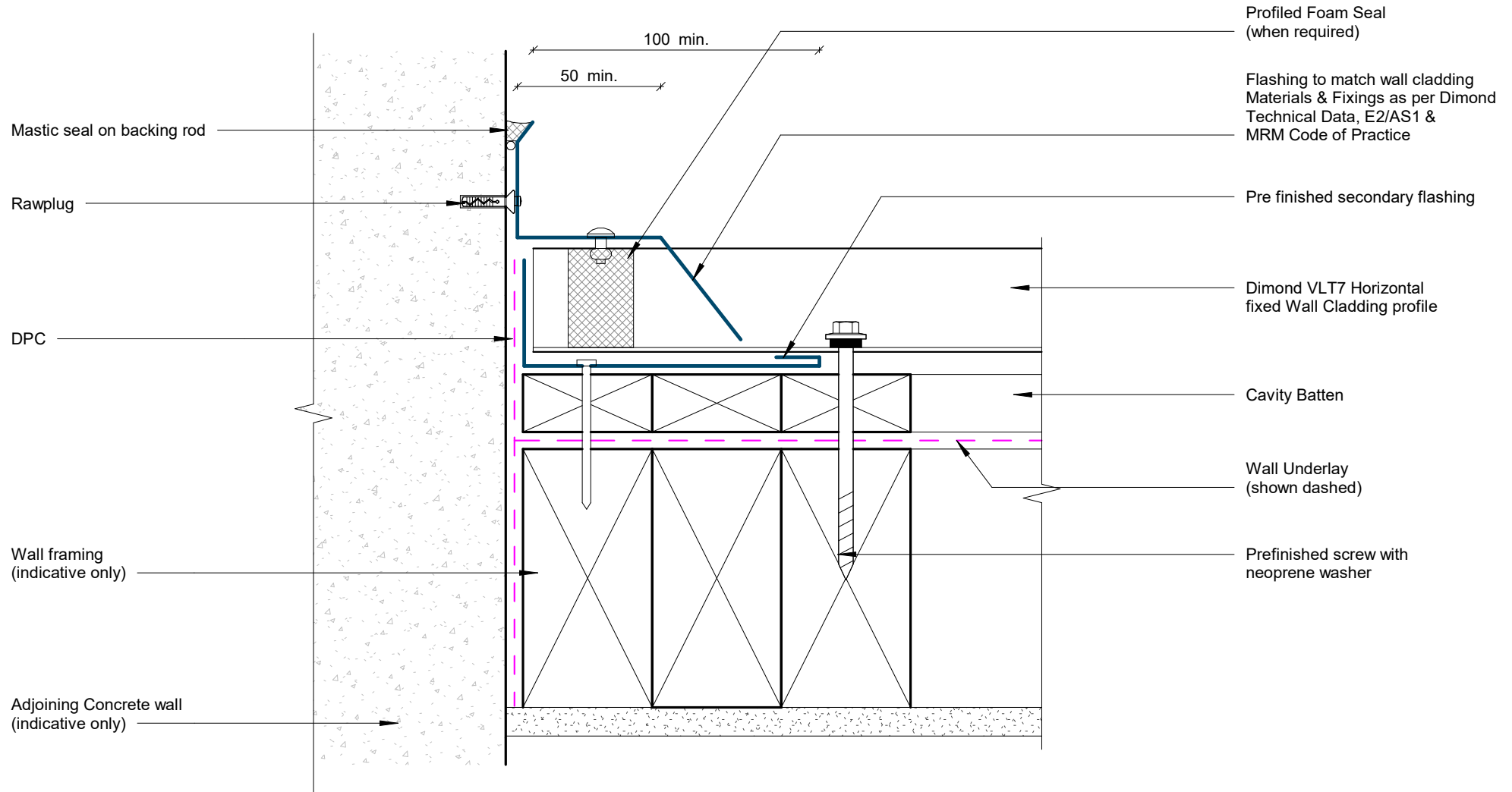
**GENERAL NOTE**

Cavity battens or timber framing that contain copper must be separated from steel cladding by a strip of wall or roof underlay or DPC.

# Pipe Penetration Detail

Rev: 1

LT7 Residential Horizontal Cladding



**GENERAL NOTE**

Cavity battens or timber framing that contain copper must be separated from steel cladding by a strip of wall or roof underlay or DPC.

## Cladding to Concrete Junction Detail

Rev: 1

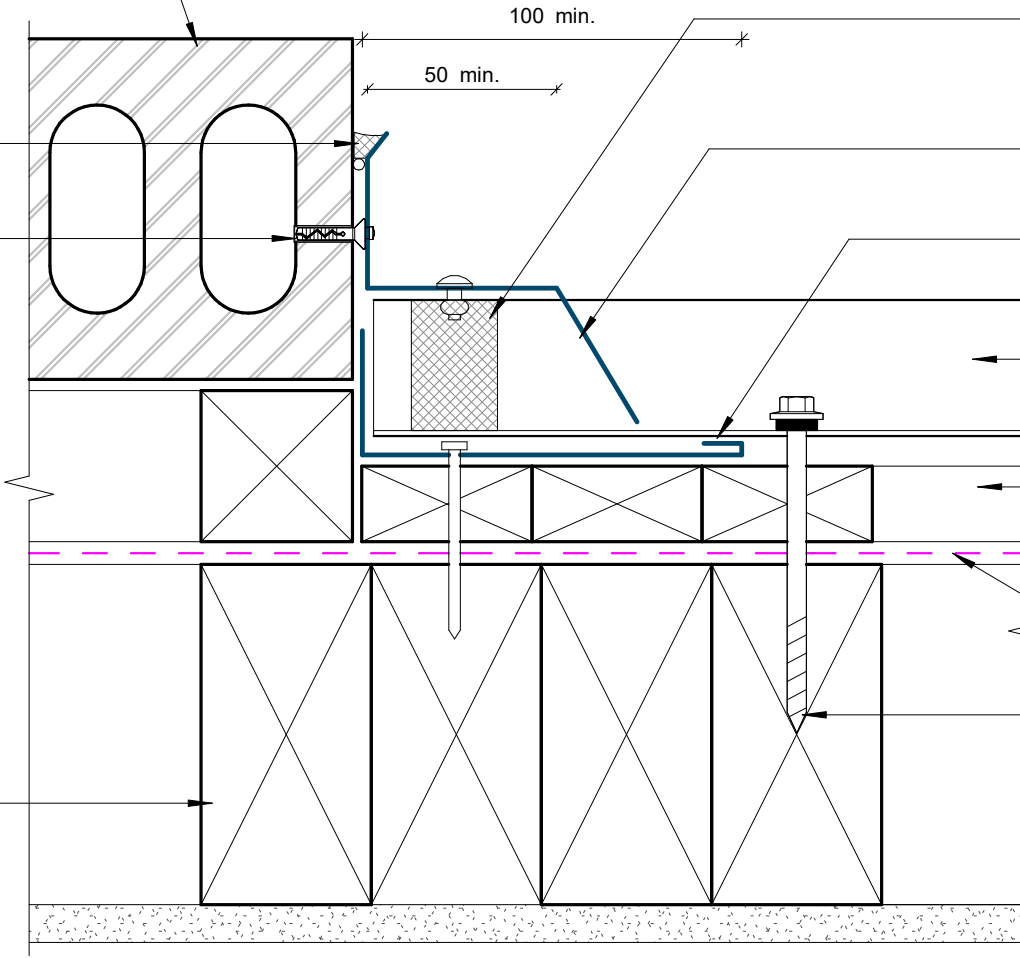
LT7 Residential Horizontal Cladding

Adjoining Brick veneer on cavity  
(indicative only)

Mastic seal on backing rod

Rawplug

Wall framing  
(indicative only)



Profiled Foam Seal  
(when required)

Flashing to match wall cladding  
Materials & Fixings as per Dimond  
Technical Data, E2/AS1 &  
MRM Code of Practice

Pre finished secondary flashing

Dimond VLT7 Horizontal  
fixed Wall Cladding profile

Cavity Batten

Wall Underlay  
(shown dashed)

Prefinished screw with  
neoprene washer

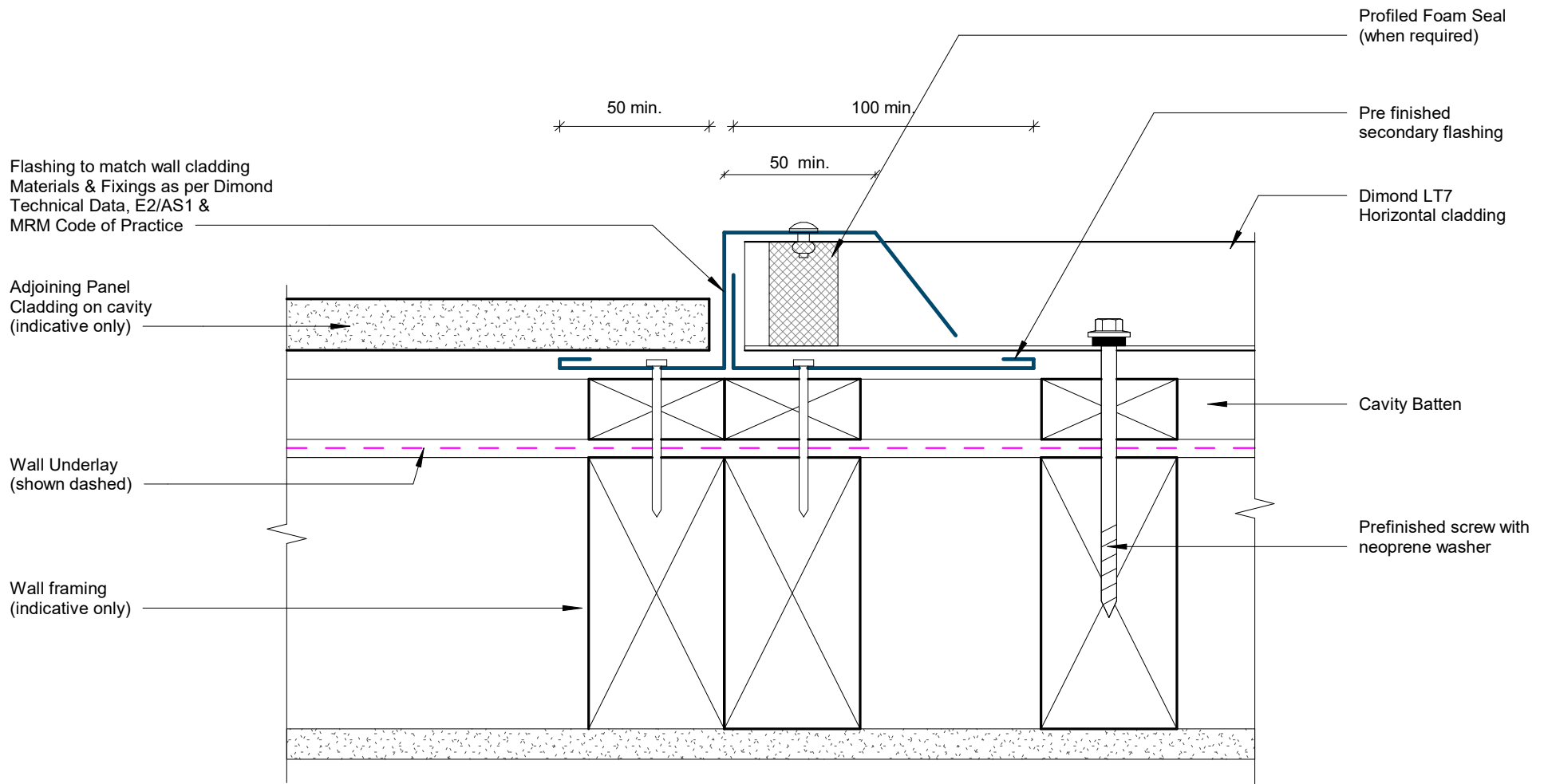
### GENERAL NOTE

Cavity battens or timber framing that contain copper must be separated from steel cladding by a strip of wall or roof underlay or DPC.

## Cladding to Brick Junction Detail

Rev: 1

LT7 Residential Horizontal Cladding



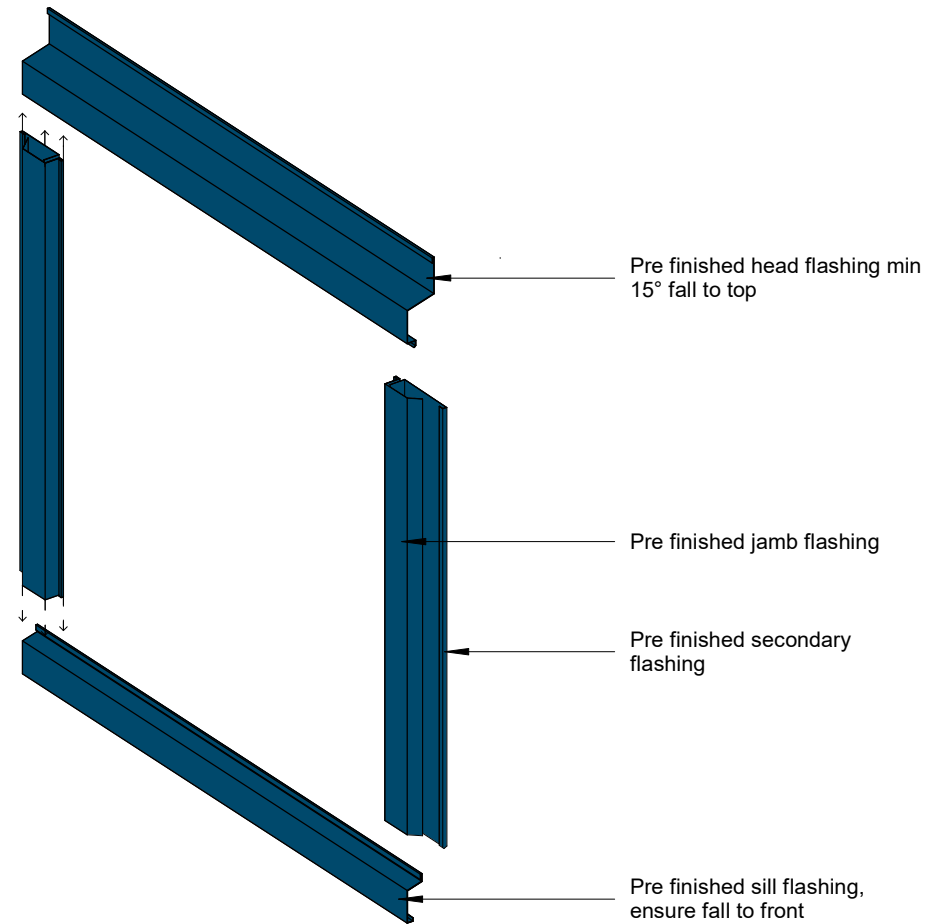
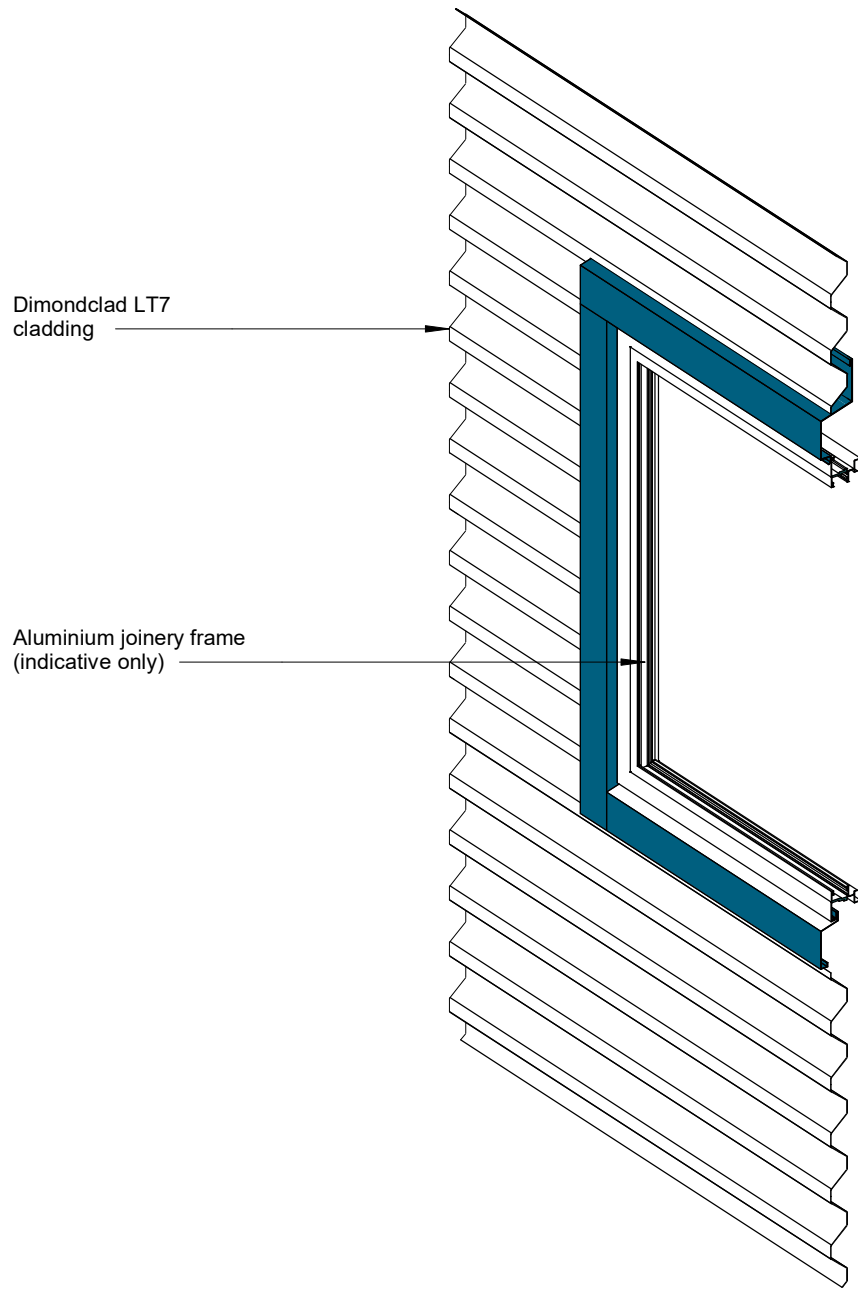
**GENERAL NOTE**

Cavity battens or timber framing that contain copper must be separated from steel cladding by a strip of wall or roof underlay or DPC.

## Cladding to Panel Junction Detail

Rev: 1

LT7 Residential Horizontal Cladding



## 3D Window Flashing Detail

Rev: 1

LT7 Residential Horizontal Cladding