

# HERITAGE TRAY

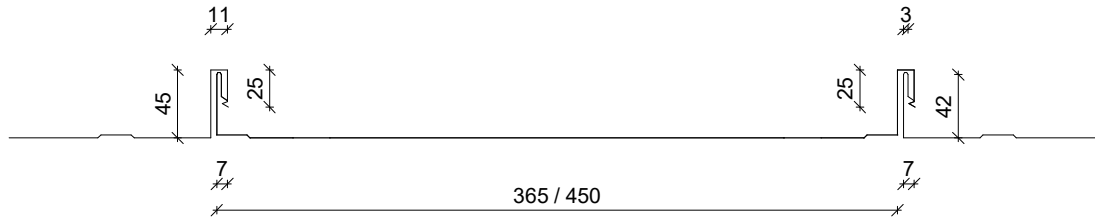
## RESIDENTIAL VERTICAL WALL CLADDING

### DETAILS:

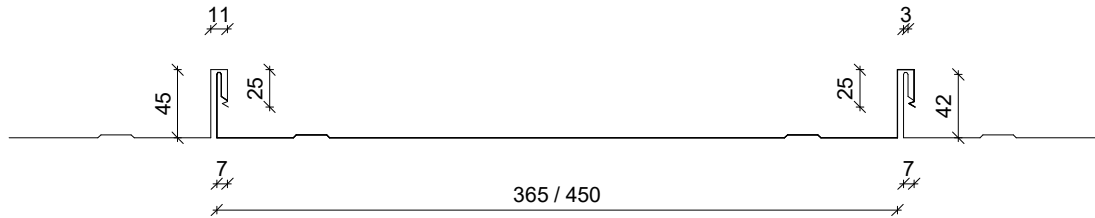
### REV: DATE:

HTRVC00	Cover Sheet	1	Aug 2025
HTRVC01	Profile Summary	1	Aug 2025
HTRVC02	Typical Flashings Details	1	Aug 2025
HTRVC03	Barge Wall Detail	1	Aug 2025
HTRVC04	Transverse Junction Detail	1	Aug 2025
HTRVC05	External Corner Detail	1	Aug 2025
HTRVC06	Internal Corner Detail	1	Aug 2025
HTRVC07	Base Detail	1	Aug 2025
HTRVC08	Soffit Detail	1	Aug 2025
HTRVC09	Butt Window Head Detail	1	Aug 2025
HTRVC10	Butt Window Jamb Detail	1	Aug 2025
HTRVC11	Butt Window Sill Detail	1	Aug 2025
HTRVC12	Recessed Window/Door Head Detail	1	Aug 2025
HTRVC13	Recessed Window/Door Jamb Detail	1	Aug 2025
HTRVC14	Recessed Window Sill Detail	1	Aug 2025
HTRVC15	Meterbox Head Detail	1	Aug 2025
HTRVC16	Meterbox Jamb Detail	1	Aug 2025
HTRVC17	Meterbox Sill Detail	1	Aug 2025
HTRVC18	Pipe Penetration Detail	1	Aug 2025
HTRVC19	3D Window Flashing Detail	1	Aug 2025

PROFILE OVERVIEW	
MINIMUM PITCH	3°
RIB TYPE	High
RIBS PER SHEET	2 Ribs per sheet
WIDTH	365mm Pan, 450mm Pan

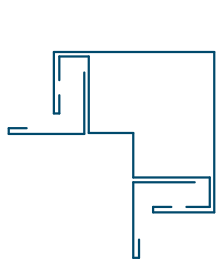


**OPTION 1 - Outside Swage**

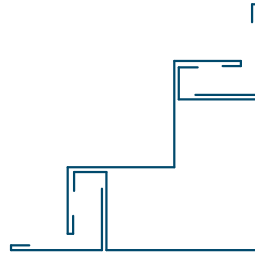


**OPTION 2 - Inside Swage**

## Profile Summary



External Corner Flashing



Internal Corner Flashing



Transverse / Base Flashing



Soffit Flashing



Window Sill Flashing



Window Jamb Flashing



Window Head Flashing

## Typical Flashings Details

Under flashing to match roofing.  
Materials & Fixings as per Dimond  
Technical Data, E2/AS1 & MRM  
Code of Practice

Barge flashing to match roofing.  
Materials & Fixings as per  
Dimond Technical Data, E2/AS1  
& MRM Code of Practice

Vented cavity battens

Prefinished screw

Heritage Tray vertical fixed  
wall cladding profile

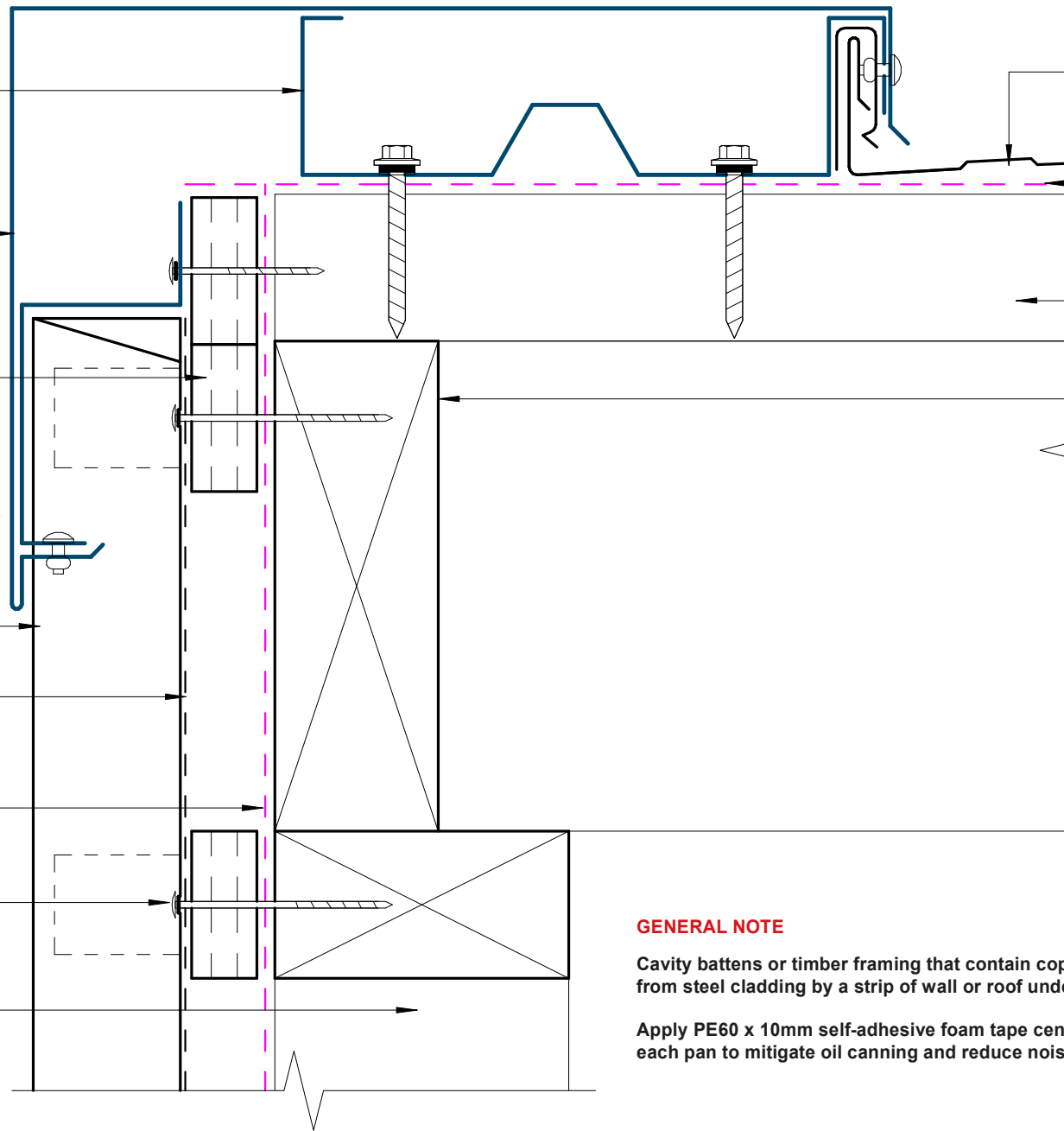
PE60 x 10mm self adhesive  
foam tape - Mid Pan

Wall underlay  
(shown dashed)

Waffer head screw with  
neoprene washer

Wall framing  
(indicative only)

Z



Dimond Roofing Profile

Roof underlay with foam  
tape (shown dashed)

Purlins  
(indicative only)

Roof framing  
(indicative only)

COVER DIMENSIONS AS PER E2/AS1	Z
<b>SITUATION 1</b> Low, Medium & High Wind Zones where roof pitch $\geq 10^\circ$ (Excludes any soft edge or turn-down)	50 MIN
<b>SITUATION 2</b> All roof pitches in Very High zone. Low, Medium & High Wind Zones where roof pitch $\leq 10^\circ$ (Excludes any soft edge or turn-down)	70 MIN
<b>SITUATION 3</b> All roof pitches in Extra High zone. (Excludes any soft edge or turn-down)	90 MIN

**GENERAL NOTE**

Cavity battens or timber framing that contain copper must be separated from steel cladding by a strip of wall or roof underlay or DPC.

Apply PE60 x 10mm self-adhesive foam tape centrally to the rear face of each pan to mitigate oil canning and reduce noise from thermal expansion.

## Barge Wall Detail

PE60 x 10mm self adhesive foam tape - Mid Pan

Heritage Tray vertical fixed wall cladding profile

Wall Underlay (shown dashed)

Wall framing (indicative only)

Waffer head screw with neoprene washer

Cavity drainage closure strip

Purpose made flashing, ensure fall to front. Flashing to match wall cladding. Materials & Fixings as per Dimond Technical Data, E2/AS1 & MRM Code of Practice

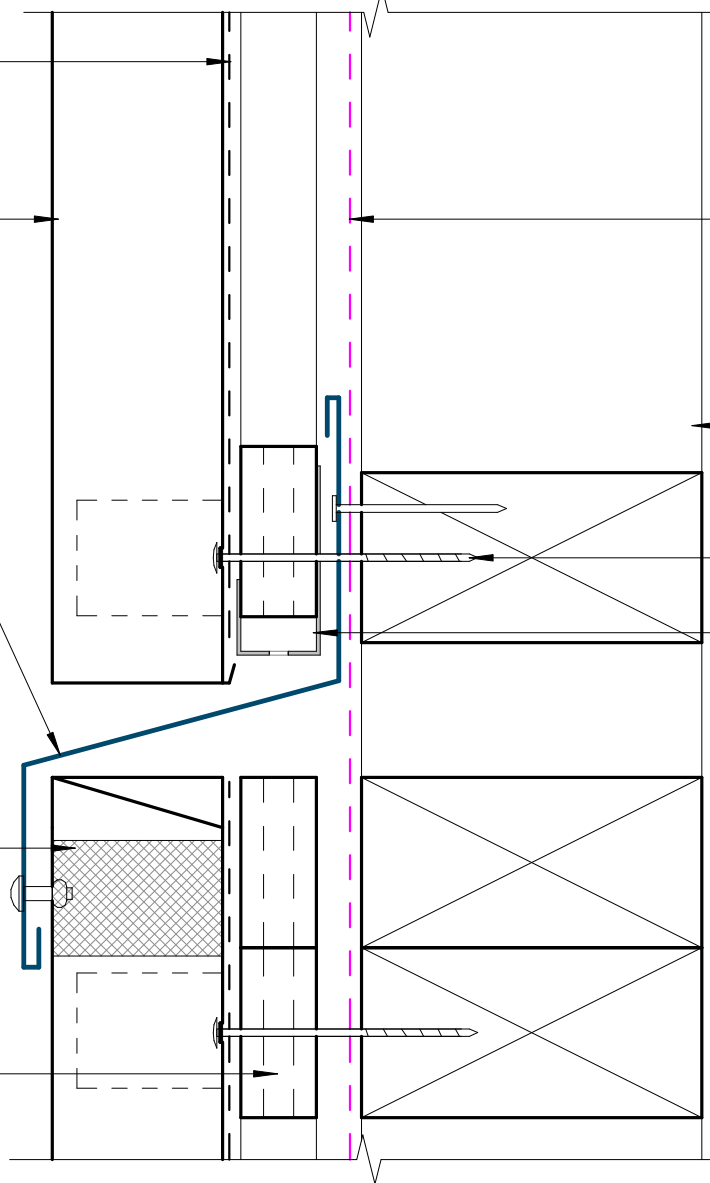
75 min.

25

50 min.

Profiled Foam Seal (when required)

Vented cavity battens



**GENERAL NOTE**

Cavity battens or timber framing that contain copper must be seperated from steel cladding by a strip of wall or roof underlay or DPC.

Apply PE60 x 10mm self-adhesive foam tape centrally to the rear face of each pan to mitigate oil canning and reduce noise from thermal expansion.

# Transverse Junction Detail

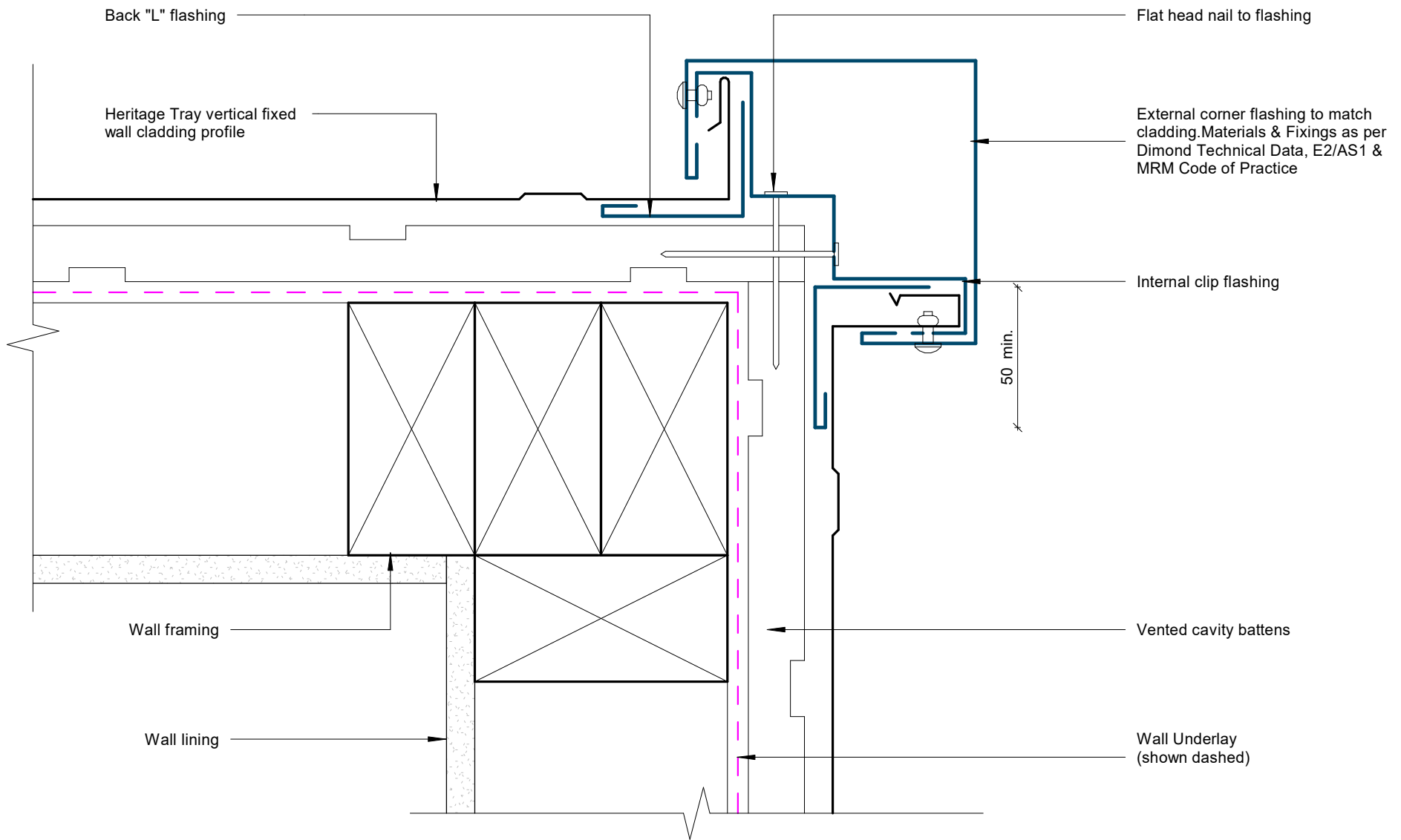
Rev: 1

Heritage Tray Residential Vertical Cladding



©Dimond 2023, all rights reserved. The information and specifications contained in this document are proprietary to Dimond and may not be used other than for the purpose of designing or building a roof or roofing system solely using products supplied or approved by Dimond ("Permitted Purpose"). You may copy this document solely for the Permitted Purpose, but may not otherwise copy, publish, distribute or modify this document without Dimond's prior written consent. Dimond will not be liable for any use of this document or information and specifications contained in this document, other than for the Permitted Purpose

Date: Aug 2025 Scale: 1 : 2 Sheet: HTRVC04



**GENERAL NOTE**

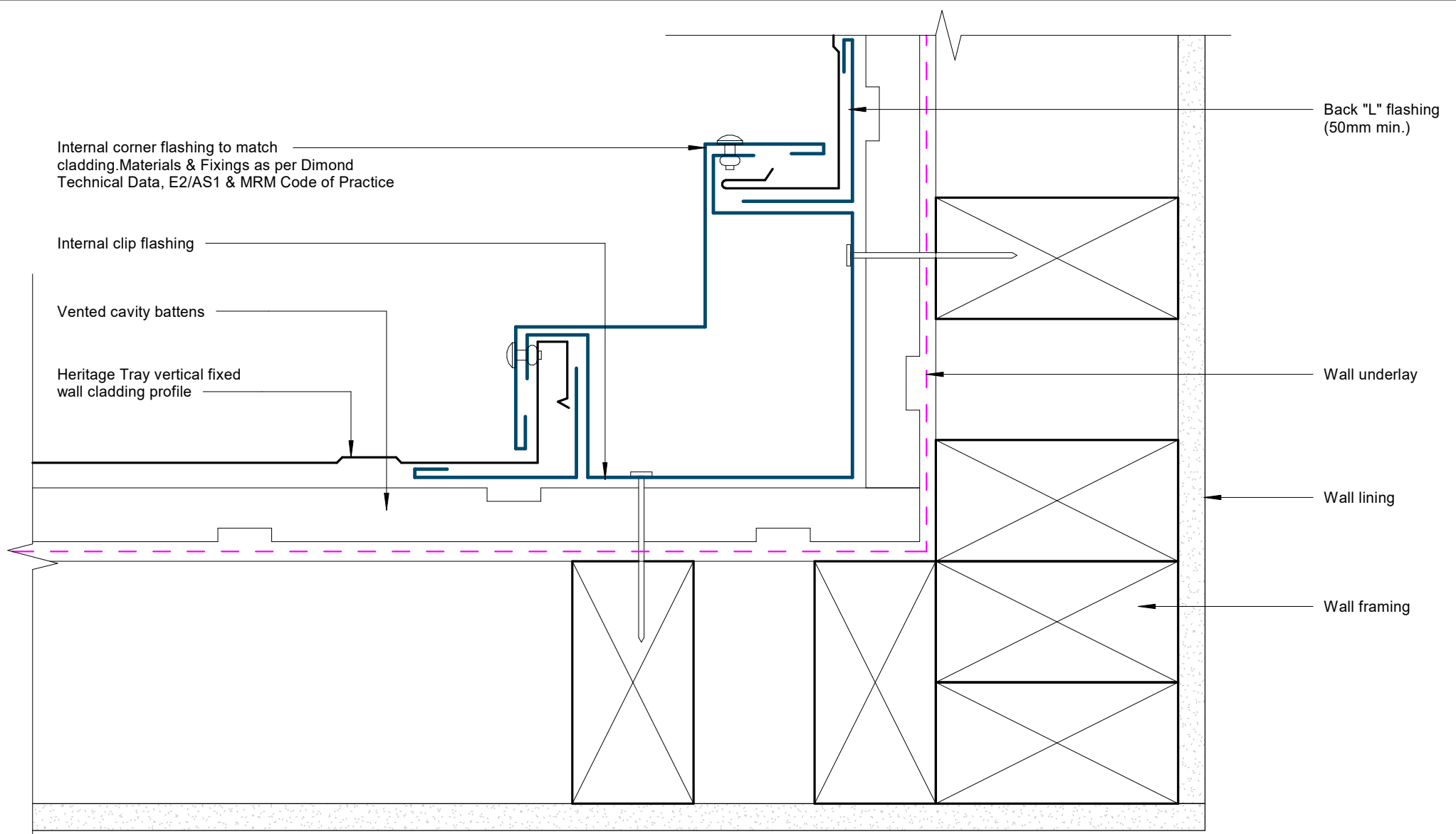
Cavity battens or timber framing that contain copper must be separated from steel cladding by a strip of wall or roof underlay or DPC.

Apply PE60 x 10mm self-adhesive foam tape centrally to the rear face of each pan to mitigate oil canning and reduce noise from thermal expansion.

# External Corner Detail

Rev: 1

Heritage Tray Residential Vertical Cladding



**GENERAL NOTE**

Cavity battens or timber framing that contain copper must be separated from steel cladding by a strip of wall or roof underlay or DPC.

Apply PE60 x 10mm self-adhesive foam tape centrally to the rear face of each pan to mitigate oil canning and reduce noise from thermal expansion.

# Internal Corner Detail

Rev: 1

Heritage Tray Residential Vertical Cladding

Heritage Tray vertical fixed wall cladding profile

PE60 x 10mm self adhesive foam tape - Mid Pan

Waffer head screw with neoprene washer

Vented Cavity Batten

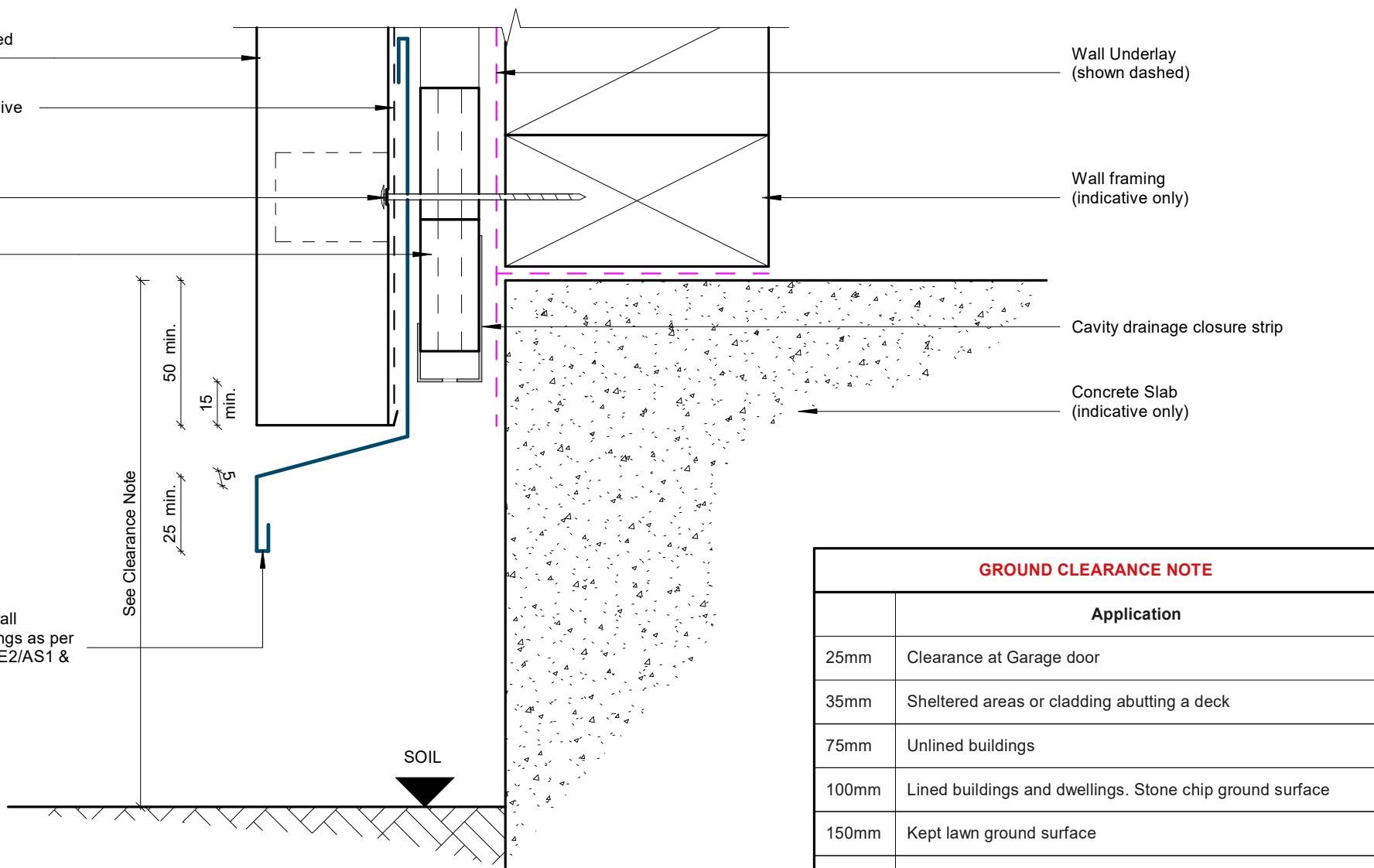
Wall Underlay (shown dashed)

Wall framing (indicative only)

Cavity drainage closure strip

Concrete Slab (indicative only)

Base flashing to match wall cladding Materials & Fixings as per Dimond Technical Data, E2/AS1 & MRM Code of Practice



**GROUND CLEARANCE NOTE**

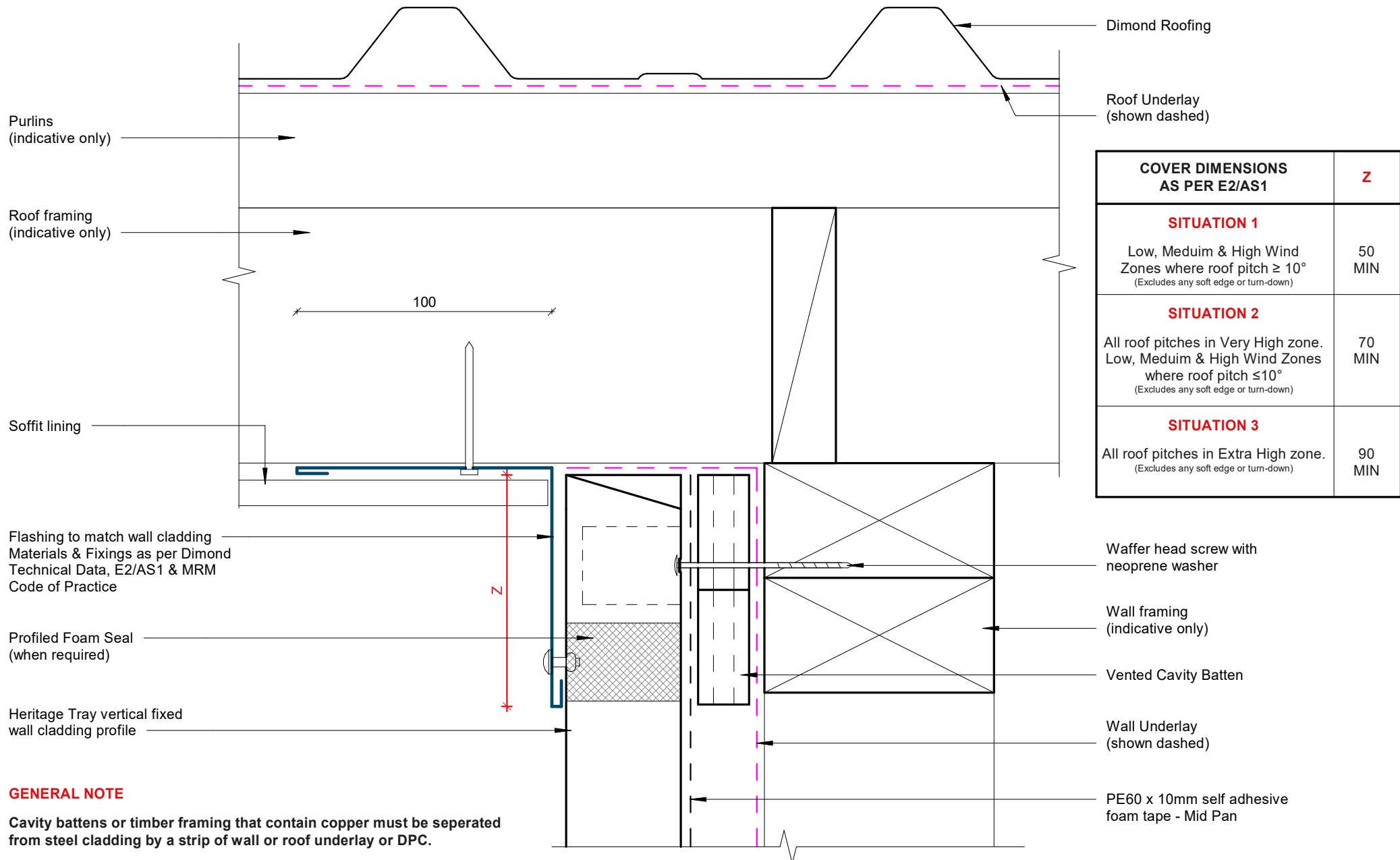
	Application
25mm	Clearance at Garage door
35mm	Sheltered areas or cladding abutting a deck
75mm	Unlined buildings
100mm	Lined buildings and dwellings. Stone chip ground surface
150mm	Kept lawn ground surface
175mm	Pasture ground surface

**GENERAL NOTE**

Cavity battens or timber framing that contain copper must be seperated from steel cladding by a strip of wall or roof underlay or DPC.

Apply PE60 x 10mm self-adhesive foam tape centrally to the rear face of each pan to mitigate oil canning and reduce noise from thermal expansion.

**Base Detail**



**GENERAL NOTE**

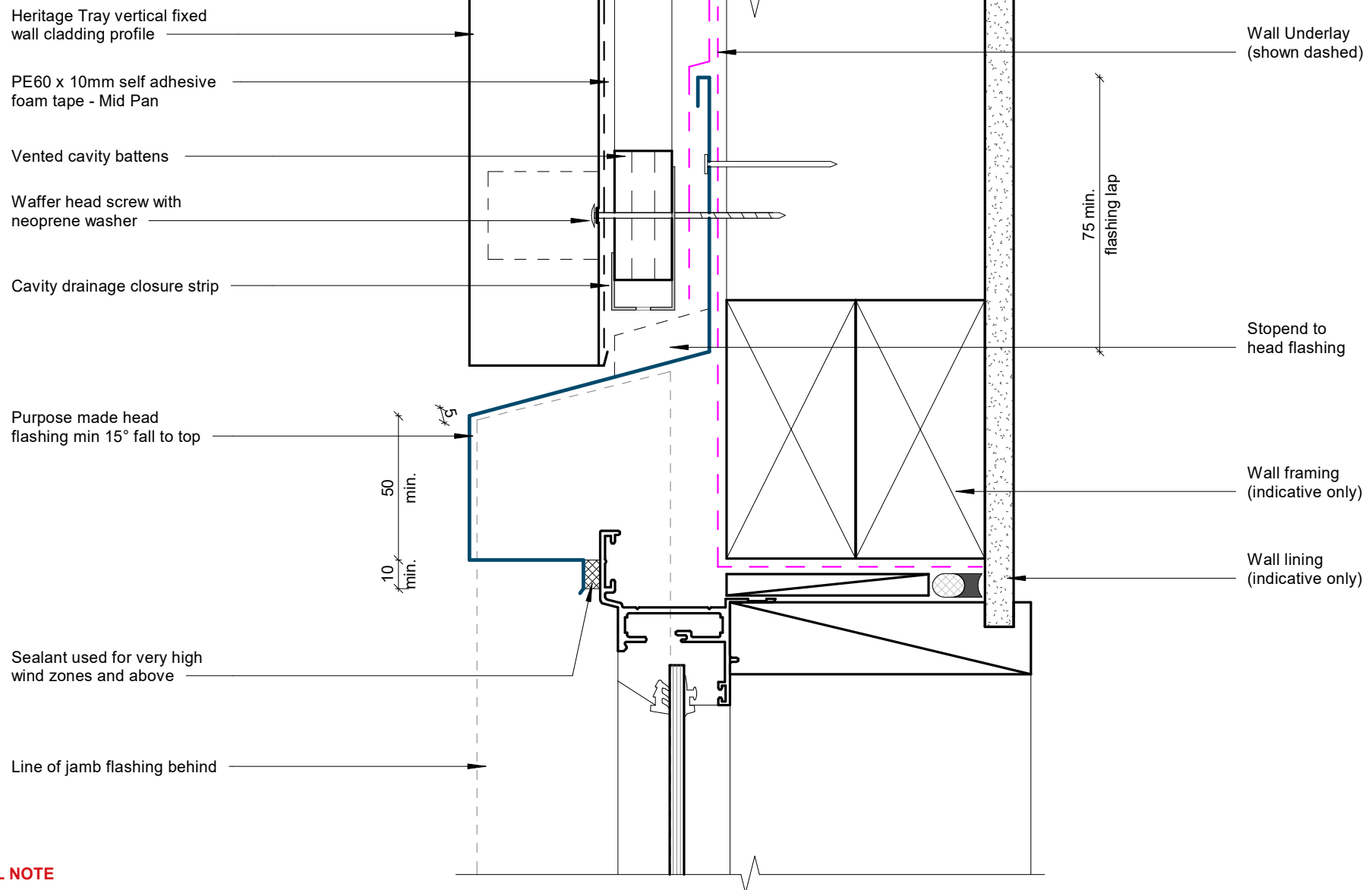
Cavity battens or timber framing that contain copper must be separated from steel cladding by a strip of wall or roof underlay or DPC.

Apply PE60 x 10mm self-adhesive foam tape centrally to the rear face of each pan to mitigate oil canning and reduce noise from thermal expansion.

# Soffit Detail

Rev: 1

Heritage Tray Residential Vertical Cladding



**GENERAL NOTE**

Cavity battens or timber framing that contain copper must be seperated from steel cladding by a strip of wall or roof underlay or DPC.

Apply PE60 x 10mm self-adhesive foam tape centrally to the rear face of each pan to mitigate oil canning and reduce noise from thermal expansion.

# Butt Window Head Detail

Rev: 1

Heritage Tray Residential Vertical Cladding

Jamb flashing to match wall cladding  
 Materials & Fixings as per Dimond Technical  
 Data, E2/AS1 & MRM Code of Practice

Line of head flashing over

75 min.  
 50 min.

Concealed fixing flashing

Back flashing

Soaker flashing (extended out  
 below sill)

Heritage Tray vertical fixed  
 wall cladding profile

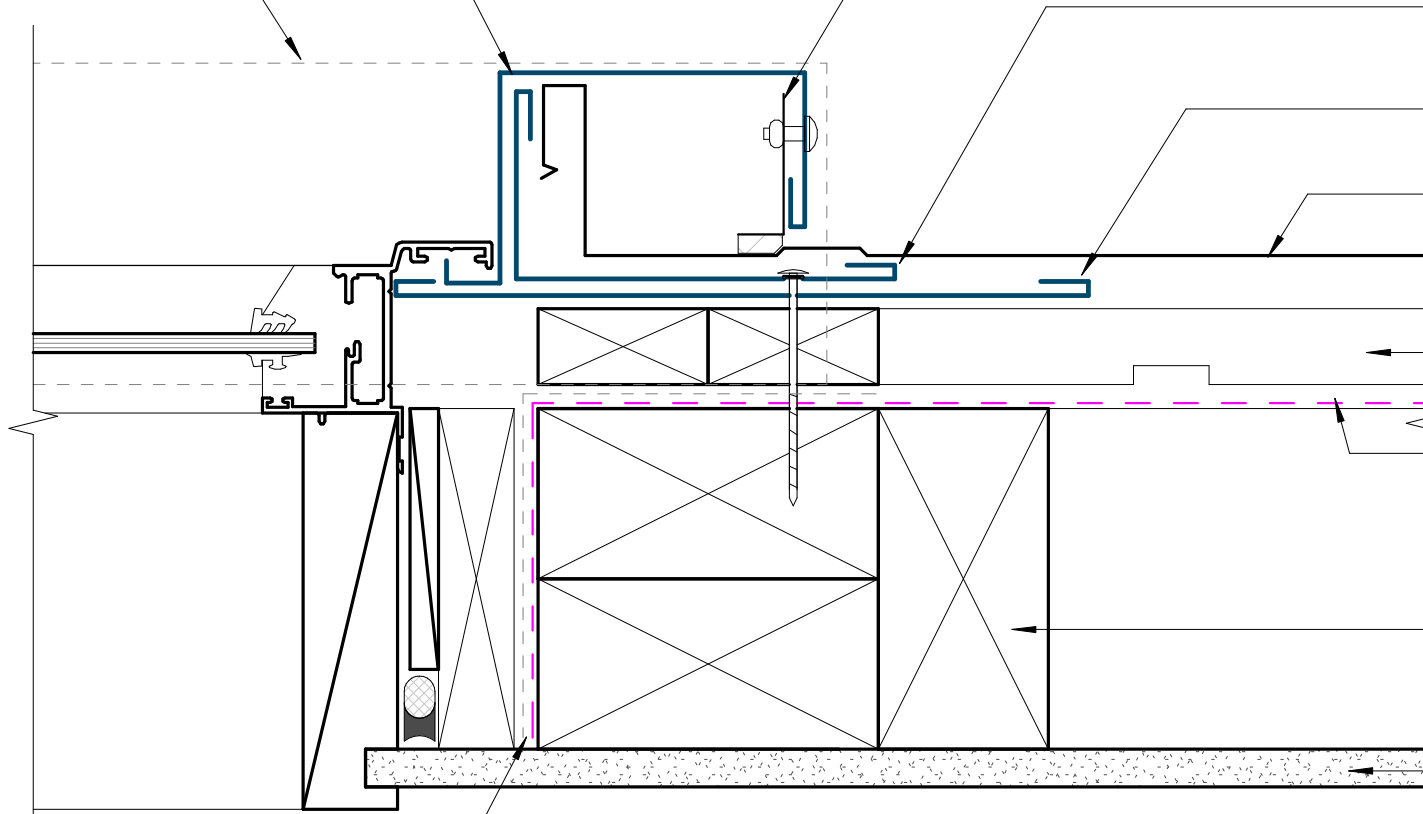
Vented Cavity Batten

Wall Underlay  
 (shown dashed)

Wall framing  
 (indicative only)

Wall lining  
 (indicative only)

Flexible flashing tape over underlay



**GENERAL NOTE**

Cavity battens or timber framing that contain copper must be separated from steel cladding by a strip of wall or roof underlay or DPC.

Apply PE60 x 10mm self-adhesive foam tape centrally to the rear face of each pan to mitigate oil canning and reduce noise from thermal expansion.

# Butt Window Jamb Detail

Rev: 1

Heritage Tray Residential Vertical Cladding



©Dimond 2023, all rights reserved. The information and specifications contained in this document are proprietary to Dimond and may not be used other than for the purpose of designing or building a roof or roofing system solely using products supplied or approved by Dimond ("Permitted Purpose"). You may copy this document solely for the Permitted Purpose, but may not otherwise copy, publish, distribute or modify this document without Dimond's prior written consent. Dimond will not be liable for any use of this document or information and specifications contained in this document, other than for the Permitted Purpose

Date: Aug 2025 Scale: 1 : 2 Sheet: HTRVC10

Line of jamb flashing behind

Sill flashing stopend

Sill flashing, ensure fall to front  
Flashing to match wall cladding  
Materials & Fixings as per Dimond  
Technical Data, E2/AS1 & MRM  
Code of Practice

50 min.

Back flashing

PE60 x 10mm self adhesive  
foam tape - Mid Pan

Heritage Tray vertical fixed  
wall cladding profile

Wall lining  
(indicative only)

Wall framing  
(indicative only)

Vented Cavity Batten

Wall Underlay  
(shown dashed)

**GENERAL NOTE**

Cavity battens or timber framing that contain copper must be separated from steel cladding by a strip of wall or roof underlay or DPC.

Apply PE60 x 10mm self-adhesive foam tape centrally to the rear face of each pan to mitigate oil canning and reduce noise from thermal expansion.

# Butt Window Sill Detail

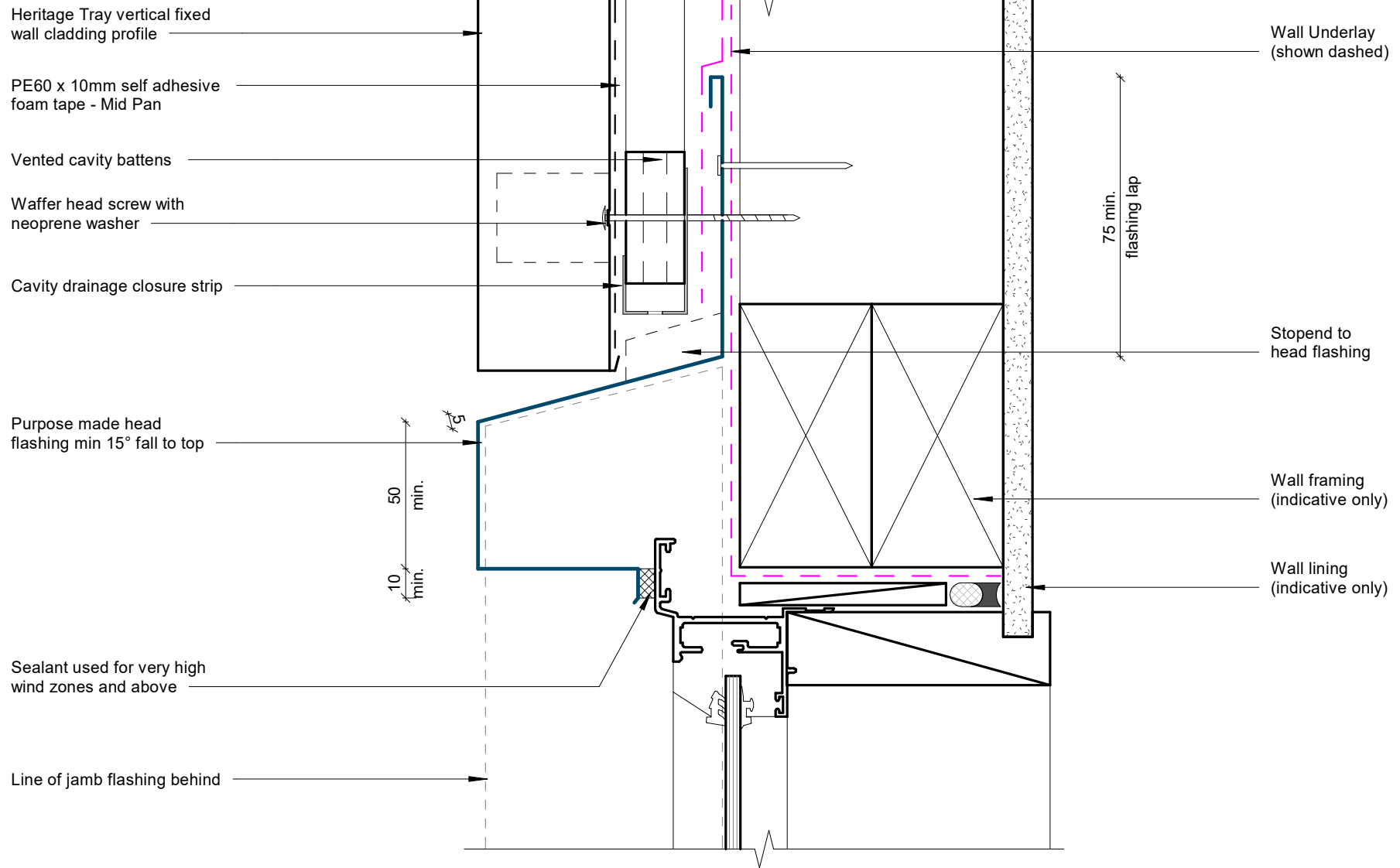
Rev: 1

Heritage Tray Residential Vertical Cladding



©Dimond 2023, all rights reserved. The information and specifications contained in this document are proprietary to Dimond and may not be used other than for the purpose of designing or building a roof or roofing system solely using products supplied or approved by Dimond ("Permitted Purpose"). You may copy this document solely for the Permitted Purpose, but may not otherwise copy, publish, distribute or modify this document without Dimond's prior written consent. Dimond will not be liable for any use of this document or information and specifications contained in this document, other than for the Permitted Purpose

Date: Aug 2025 Scale: 1 : 2 Sheet: HTRVC11



**GENERAL NOTE**

Cavity battens or timber framing that contain copper must be separated from steel cladding by a strip of wall or roof underlay or DPC.

Apply PE60 x 10mm self-adhesive foam tape centrally to the rear face of each pan to mitigate oil canning and reduce noise from thermal expansion.

# Recessed Window/Door Head Detail

Rev: 1

Heritage Tray Residential Vertical Cladding



©Dimond 2023, all rights reserved. The information and specifications contained in this document are proprietary to Dimond and may not be used other than for the purpose of designing or building a roof or roofing system solely using products supplied or approved by Dimond ("Permitted Purpose"). You may copy this document solely for the Permitted Purpose, but may not otherwise copy, publish, distribute or modify this document without Dimond's prior written consent. Dimond will not be liable for any use of this document or information and specifications contained in this document, other than for the Permitted Purpose

Date: Aug 2025 Scale: 1 : 2 Sheet: HTRVC12

Jamb flashing to match wall cladding  
Materials & Fixings as per Dimond Technical  
Data, E2/AS1 & MRM Code of Practice

Line of head flashing over

75 min.

50 min.

Concealed fixing flashing

Back flashing

Soaker flashing (extended out  
below sill)

Heritage Tray vertical fixed  
wall cladding profile

Vented Cavity Batten

Wall Underlay  
(shown dashed)

Wall framing  
(indicative only)

Wall lining  
(indicative only)

Flexible flashing tape over underlay

**GENERAL NOTE**

Cavity battens or timber framing that contain copper must be separated from steel cladding by a strip of wall or roof underlay or DPC.

Apply PE60 x 10mm self-adhesive foam tape centrally to the rear face of each pan to mitigate oil canning and reduce noise from thermal expansion.

# Recessed Window/Door Jamb Detail

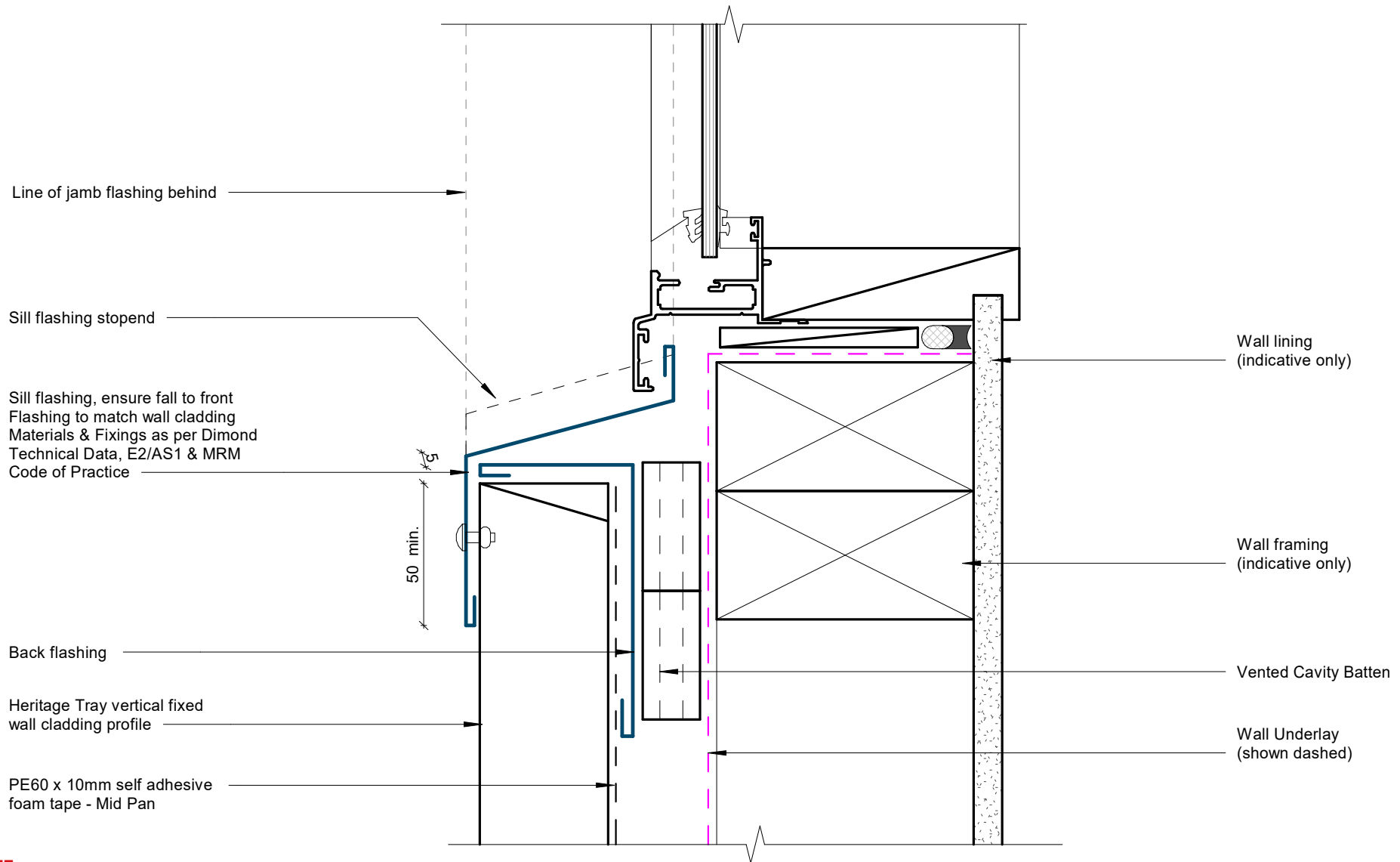
Rev: 1

Heritage Tray Residential Vertical Cladding



©Dimond 2023, all rights reserved. The information and specifications contained in this document are proprietary to Dimond and may not be used other than for the purpose of designing or building a roof or roofing system solely using products supplied or approved by Dimond ("Permitted Purpose"). You may copy this document solely for the Permitted Purpose, but may not otherwise copy, publish, distribute or modify this document without Dimond's prior written consent. Dimond will not be liable for any use of this document or information and specifications contained in this document, other than for the Permitted Purpose

Date: Aug 2025 Scale: 1 : 2 Sheet: HTRVC13



**GENERAL NOTE**

Cavity battens or timber framing that contain copper must be separated from steel cladding by a strip of wall or roof underlay or DPC.

Apply PE60 x 10mm self-adhesive foam tape centrally to the rear face of each pan to mitigate oil canning and reduce noise from thermal expansion.

# Recessed Window Sill Detail

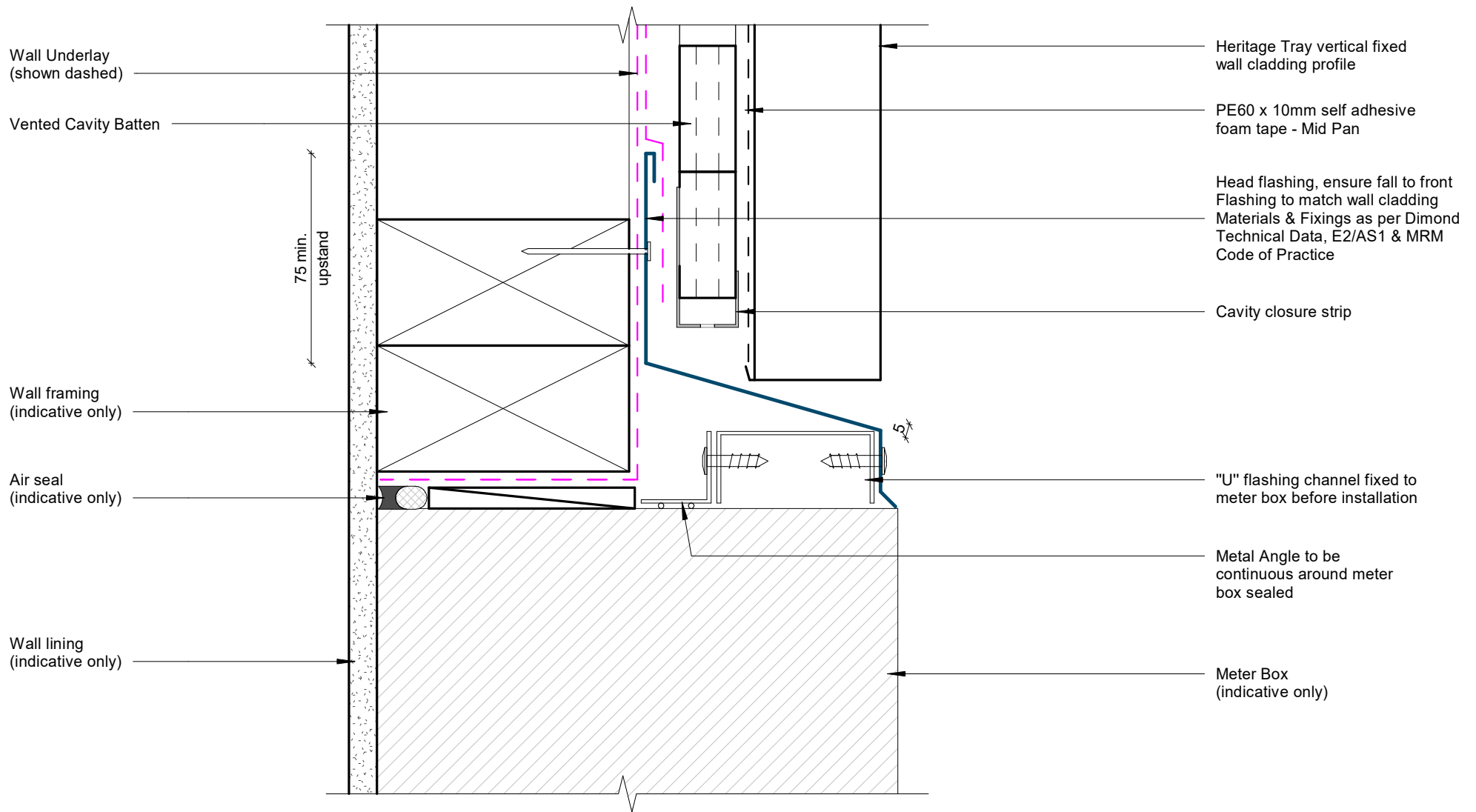
Rev: 1

Heritage Tray Residential Vertical Cladding



©Dimond 2023, all rights reserved. The information and specifications contained in this document are proprietary to Dimond and may not be used other than for the purpose of designing or building a roof or roofing system solely using products supplied or approved by Dimond ("Permitted Purpose"). You may copy this document solely for the Permitted Purpose, but may not otherwise copy, publish, distribute or modify this document without Dimond's prior written consent. Dimond will not be liable for any use of this document or information and specifications contained in this document, other than for the Permitted Purpose

Date: Aug 2025 Scale: 1 : 2 Sheet: HTRVC14



**GENERAL NOTE**

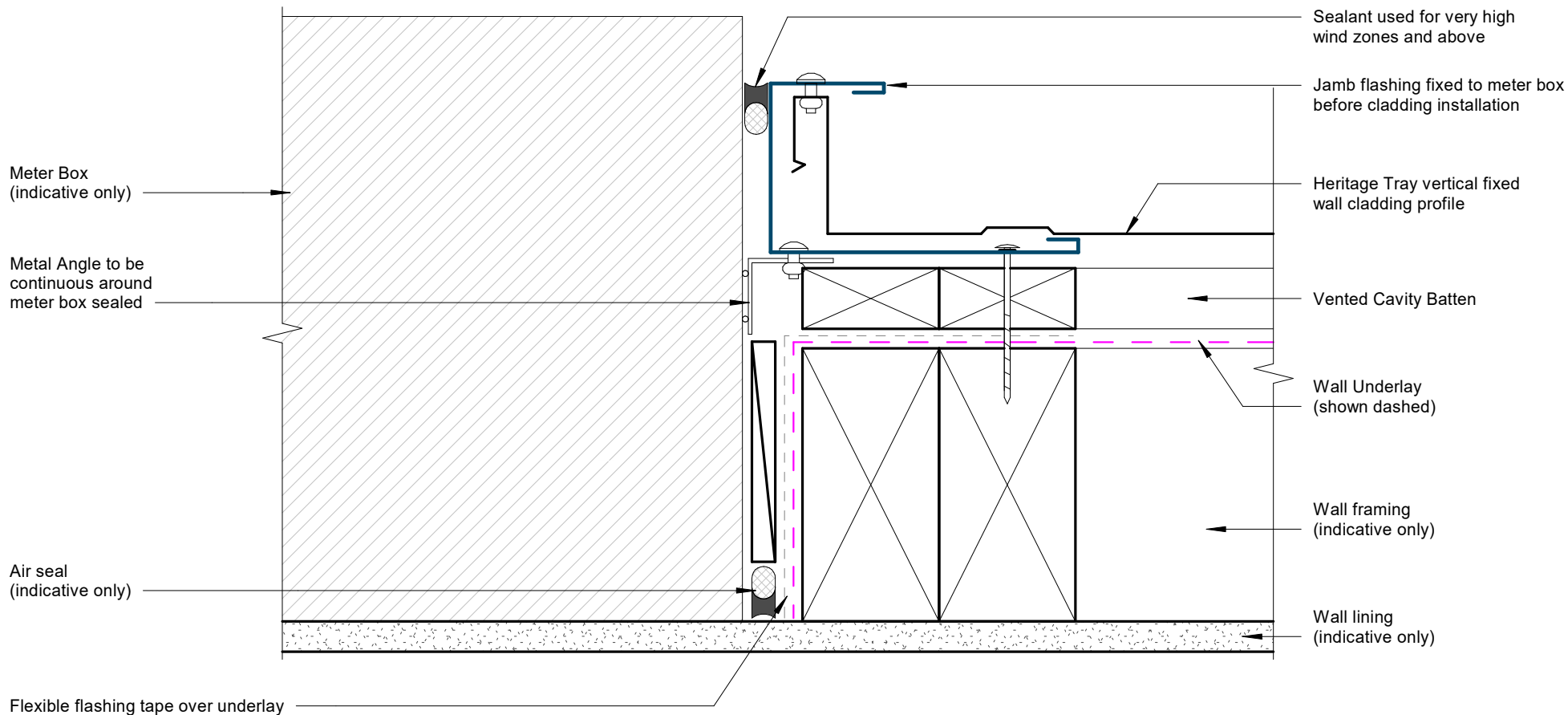
Cavity battens or timber framing that contain copper must be separated from steel cladding by a strip of wall or roof underlay or DPC.

Apply PE60 x 10mm self-adhesive foam tape centrally to the rear face of each pan to mitigate oil canning and reduce noise from thermal expansion.

# Meterbox Head Detail

Rev: 1

Heritage Tray Residential Vertical Cladding



**GENERAL NOTE**

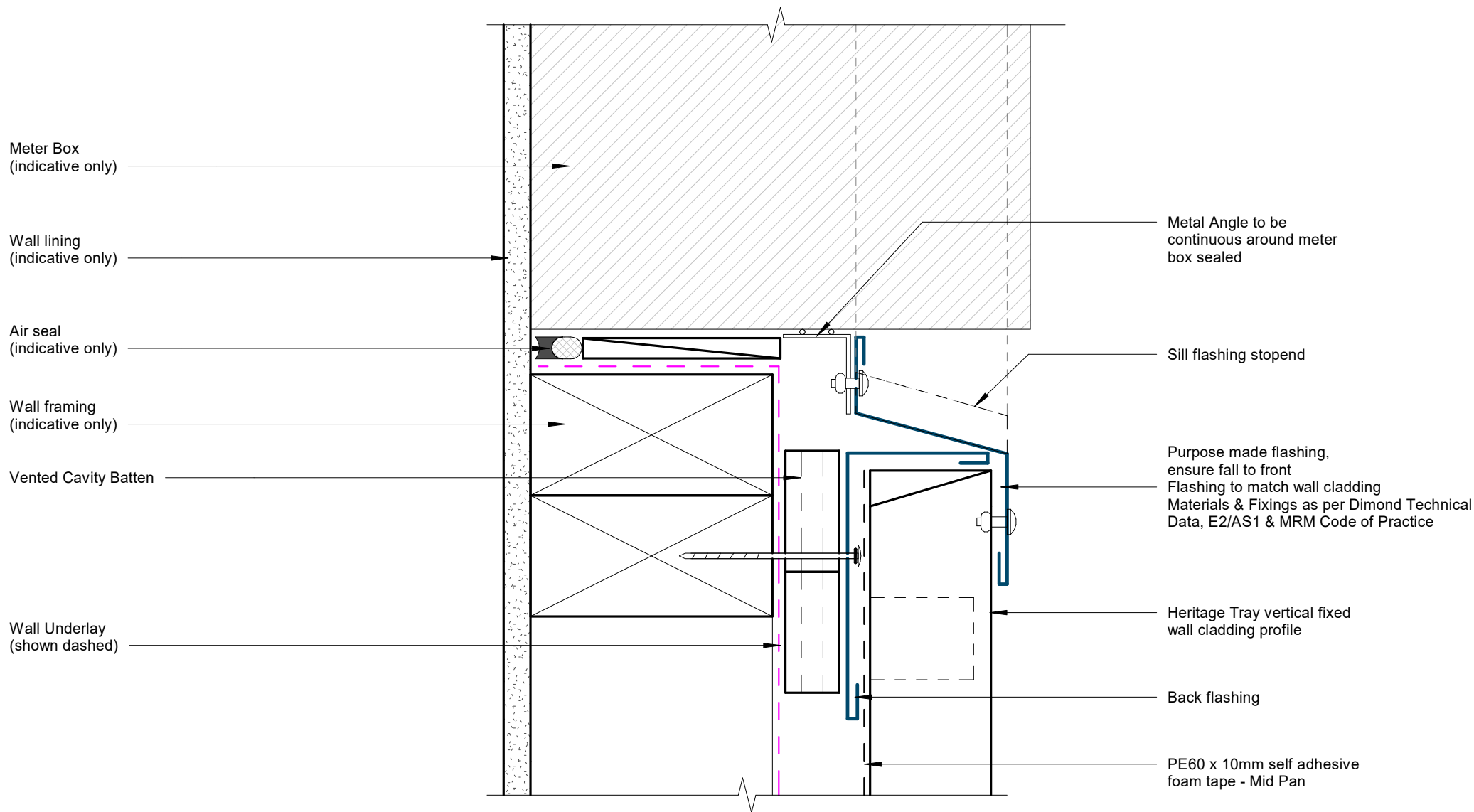
Cavity battens or timber framing that contain copper must be separated from steel cladding by a strip of wall or roof underlay or DPC.

Apply PE60 x 10mm self-adhesive foam tape centrally to the rear face of each pan to mitigate oil canning and reduce noise from thermal expansion.

# Meterbox Jamb Detail

Heritage Tray Residential Vertical Cladding

Rev: 1



**GENERAL NOTE**

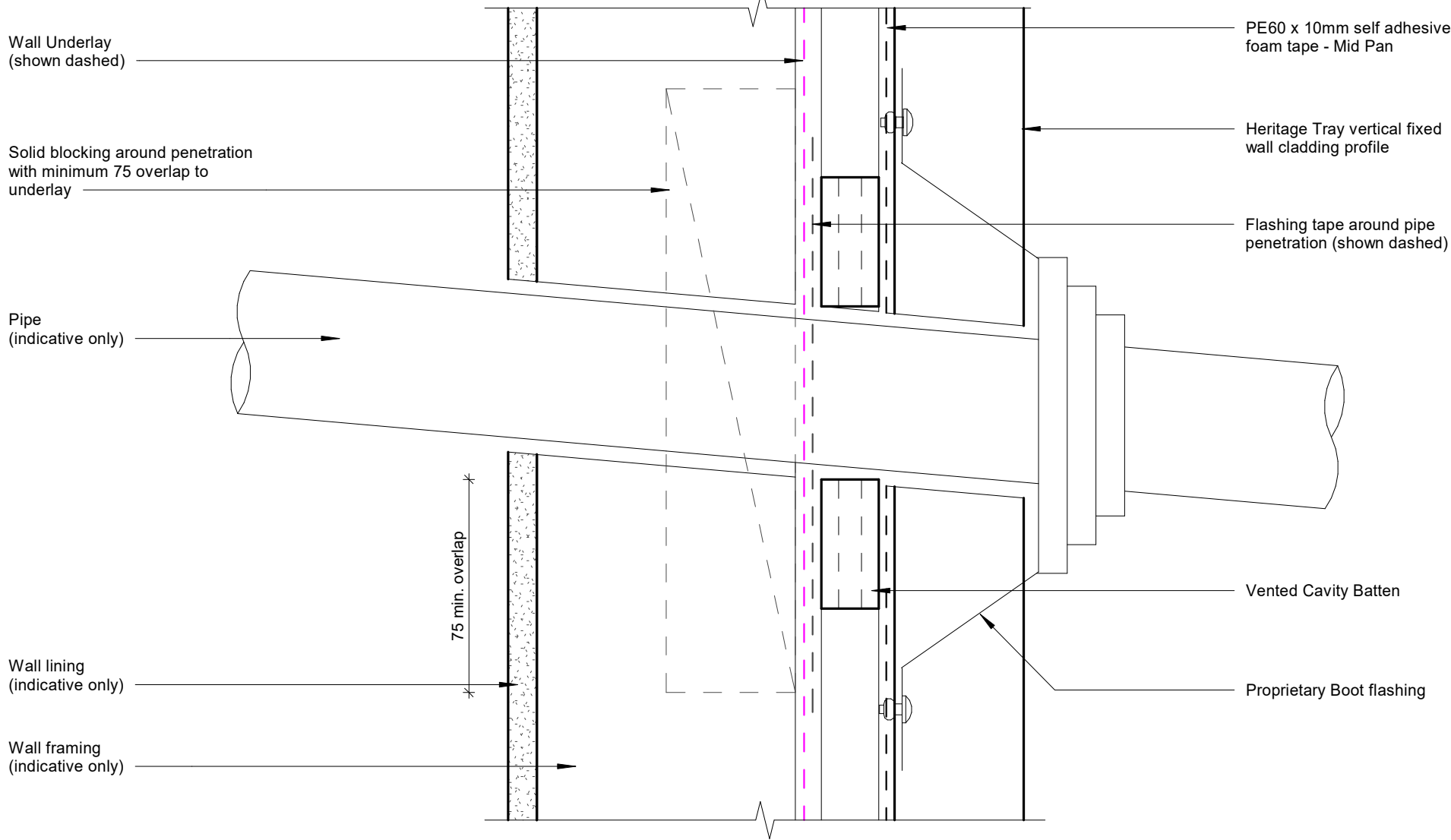
Cavity battens or timber framing that contain copper must be separated from steel cladding by a strip of wall or roof underlay or DPC.

Apply PE60 x 10mm self-adhesive foam tape centrally to the rear face of each pan to mitigate oil canning and reduce noise from thermal expansion.

# Meterbox Sill Detail

Rev: 1

Heritage Tray Residential Vertical Cladding



**GENERAL NOTE**

Cavity battens or timber framing that contain copper must be separated from steel cladding by a strip of wall or roof underlay or DPC.

Apply PE60 x 10mm self-adhesive foam tape centrally to the rear face of each pan to mitigate oil canning and reduce noise from thermal expansion.

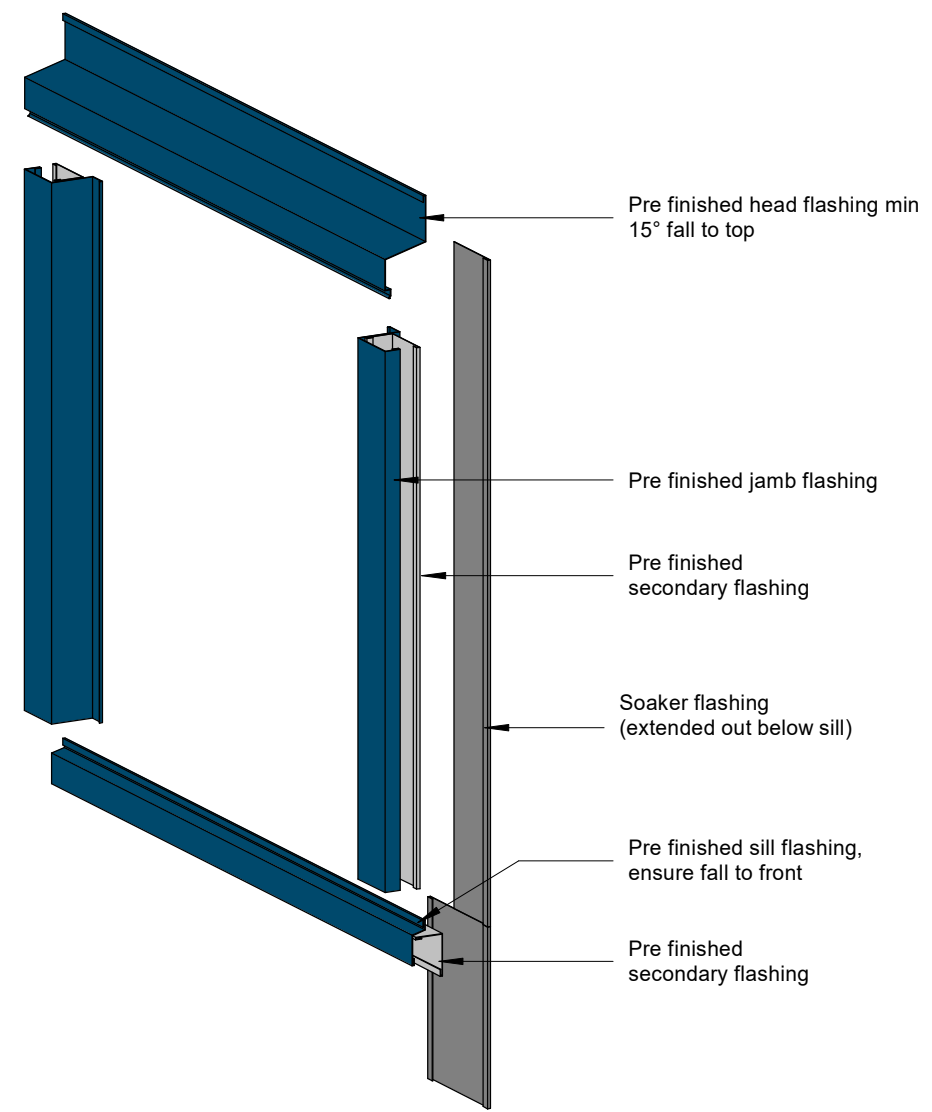
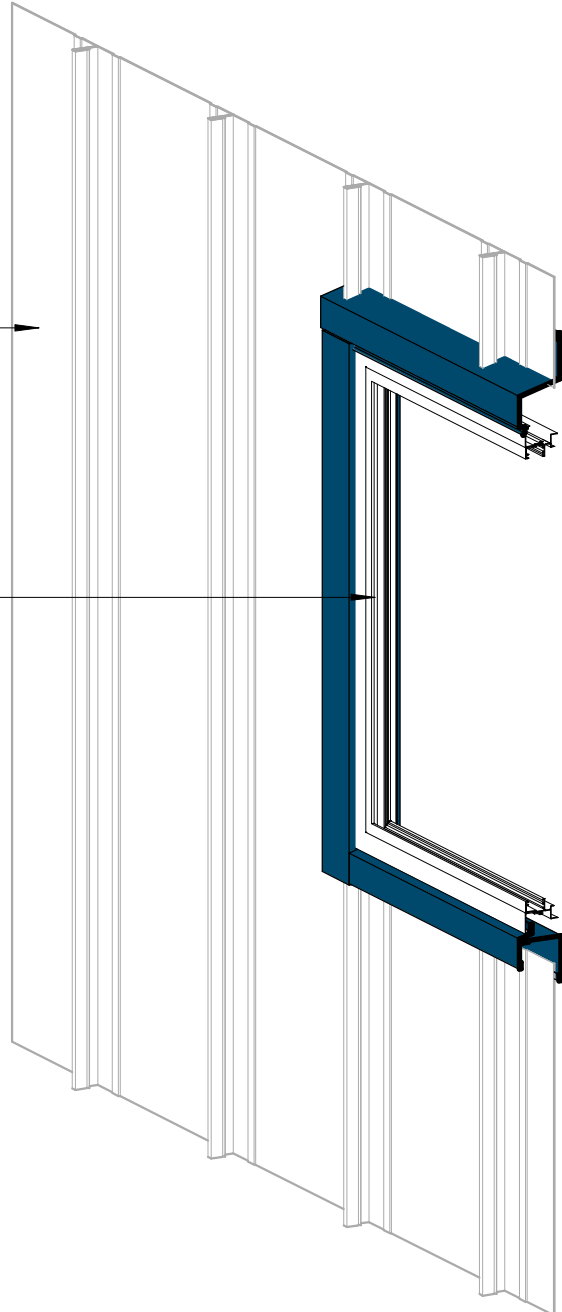
# Pipe Penetration Detail

Rev: 1

Heritage Tray Residential Vertical Cladding

Heritage Tray vertical fixed wall cladding

Aluminium joinery frame (indicative only)



Flashing to match wall cladding  
Materials & Fixings as per Dimond Technical Data, E2/AS1 & MRM Code of Practice

## 3D Window Flashing Detail

Rev: 1

Heritage Tray Residential Vertical Cladding