

EUROTRAY® ROLL SEAM

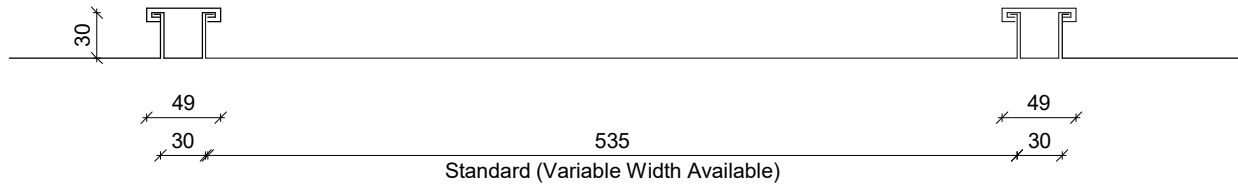
RESIDENTIAL VERTICAL WALL CLADDING

DETAILS:

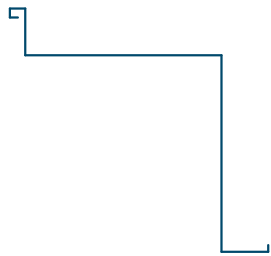
REV: DATE:

RSRVC00	Cover Sheet	1	Aug 2025
RSRVC01	Profile Summary	1	Aug 2025
RSRVC02	Typical Flashings Details	1	Aug 2025
RSRVC03	Barge Wall Detail	1	Aug 2025
RSRVC04	External Corner Detail	1	Aug 2025
RSRVC05	Internal Corner Detail	1	Aug 2025
RSRVC06	Base Detail	1	Aug 2025
RSRVC07	Soffit Detail	1	Aug 2025
RSRVC08	Flush Window Head Detail	1	Aug 2025
RSRVC09	Flush Window Jamb Detail	1	Aug 2025
RSRVC10	Flush Window Sill Detail	1	Aug 2025
RSRVC11	Recessed Window/Door Head Detail	1	Aug 2025
RSRVC12	Recessed Window/Door Jamb Detail	1	Aug 2025
RSRVC13	Recessed Window Sill Detail	1	Aug 2025
RSRVC14	Meterbox Head Detail	1	Aug 2025
RSRVC15	Meterbox Jamb Detail	1	Aug 2025
RSRVC16	Meterbox Sill Detail	1	Aug 2025
RSRVC17	Pipe Penetration Detail	1	Aug 2025
RSRVC18	3D Window Flashing Detail	1	Aug 2025

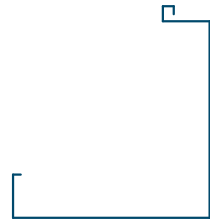
PROFILE OVERVIEW	
MINIMUM PITCH	3°
RIB TYPE	High
RIBS PER SHEET	2 Ribs per sheet
WIDTH	535mm Pan



Profile Summary



External Corner Flashing



Internal Corner Flashing



Base Flashing



Soffit Flashing



Window Sill Flashing



Window Jamb Flashing



Window Head Flashing



Sill Flashing - Meterbox



Jamb Flashing - Meterbox



Head Flashing - Meterbox

Typical Flashings Details

Under flashing to match roofing.
Materials & Fixings as per Dimond
Technical Data, E2/AS1 & MRM
Code of Practice

Barge flashing to match roofing.
Materials & Fixings as per
Dimond Technical Data, E2/AS1
& MRM Code of Practice

Vented wall underlay
separation layer over substrate

Prefinished scw with
neoprene washer

Eurotray Roll Seam vertical
fixed wall cladding profile

Vented cavity battens

Screw

H3 CD Plywood substrate
or RAB board

Wall framing
(indicative only)

Wall underlay
(shown dashed)

Dimond Roofing Profile

Vented roof underlay

Vented cavity battens

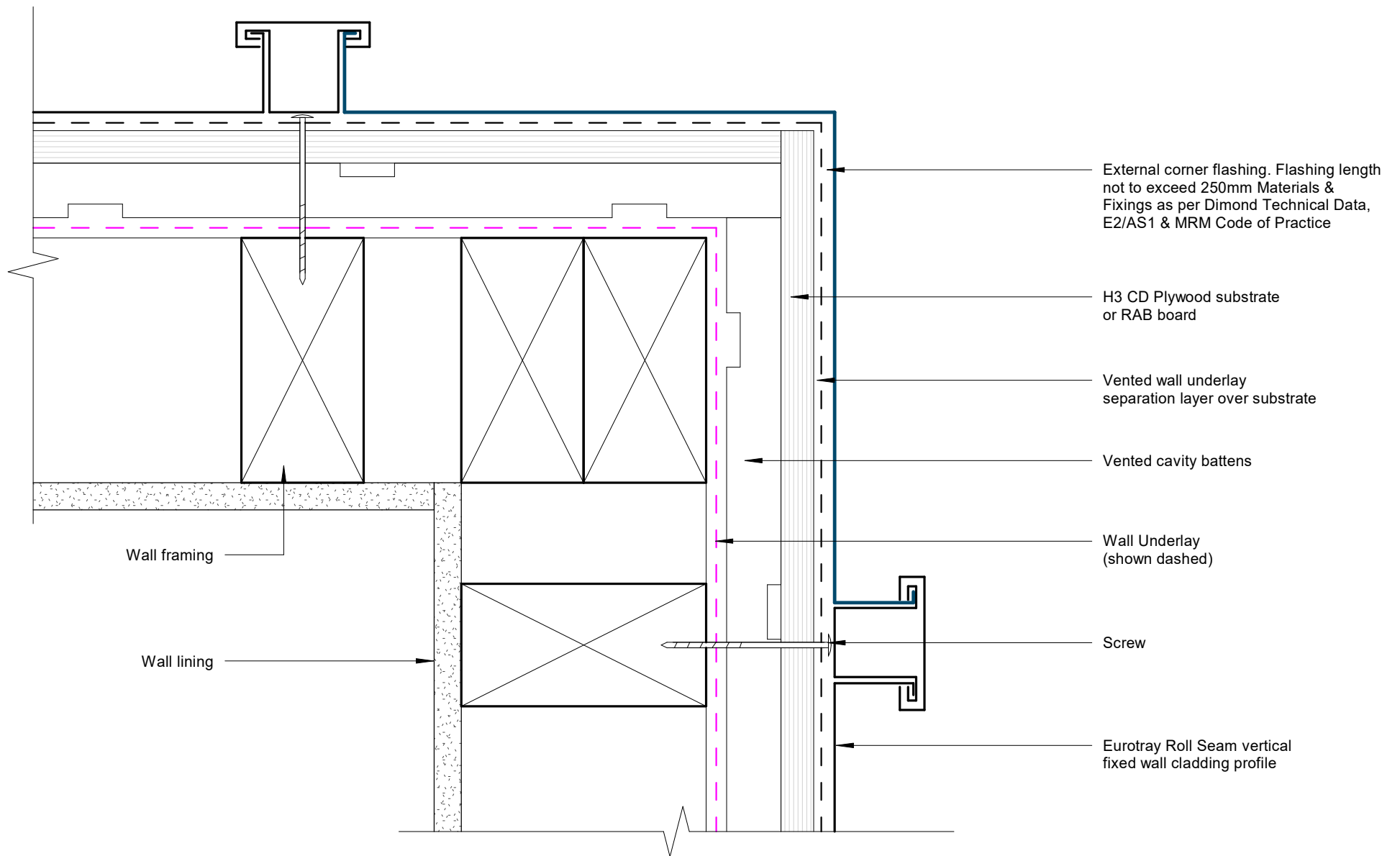
Roof framing
(indicative only)

Z

COVER DIMENSIONS AS PER E2/AS1	Z
SITUATION 1 Low, Medium & High Wind Zones where roof pitch $\geq 10^\circ$ (Excludes any soft edge or turn-down)	50 MIN
SITUATION 2 All roof pitches in Very High zone. Low, Medium & High Wind Zones where roof pitch $\leq 10^\circ$ (Excludes any soft edge or turn-down)	70 MIN
SITUATION 3 All roof pitches in Extra High zone. (Excludes any soft edge or turn-down)	90 MIN

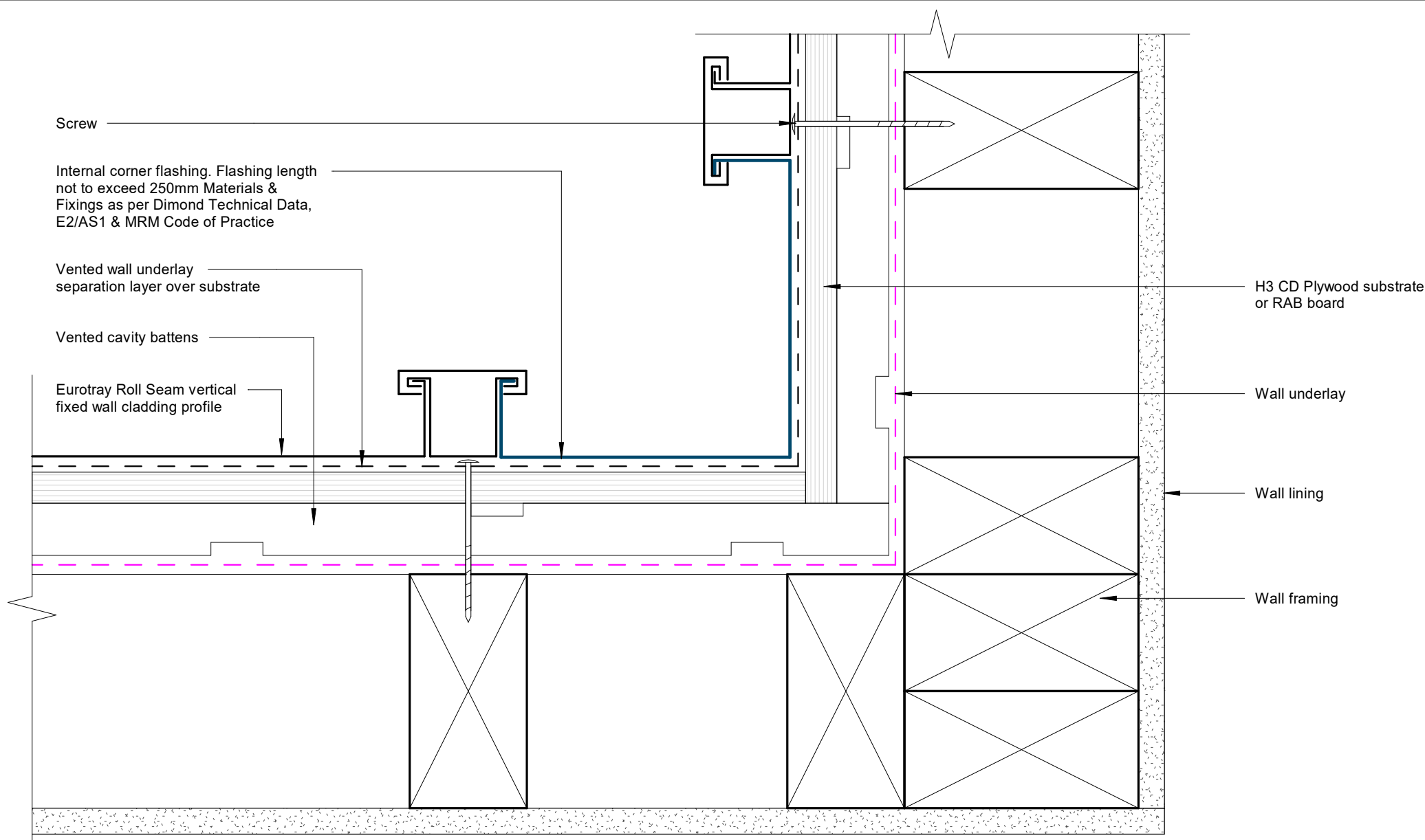
Barge Wall Detail

Rev: 1 Eurotray Roll Seam Residential Vertical Cladding



External Corner Detail

Rev: 1 Eurotray Roll Seam Residential Vertical Cladding



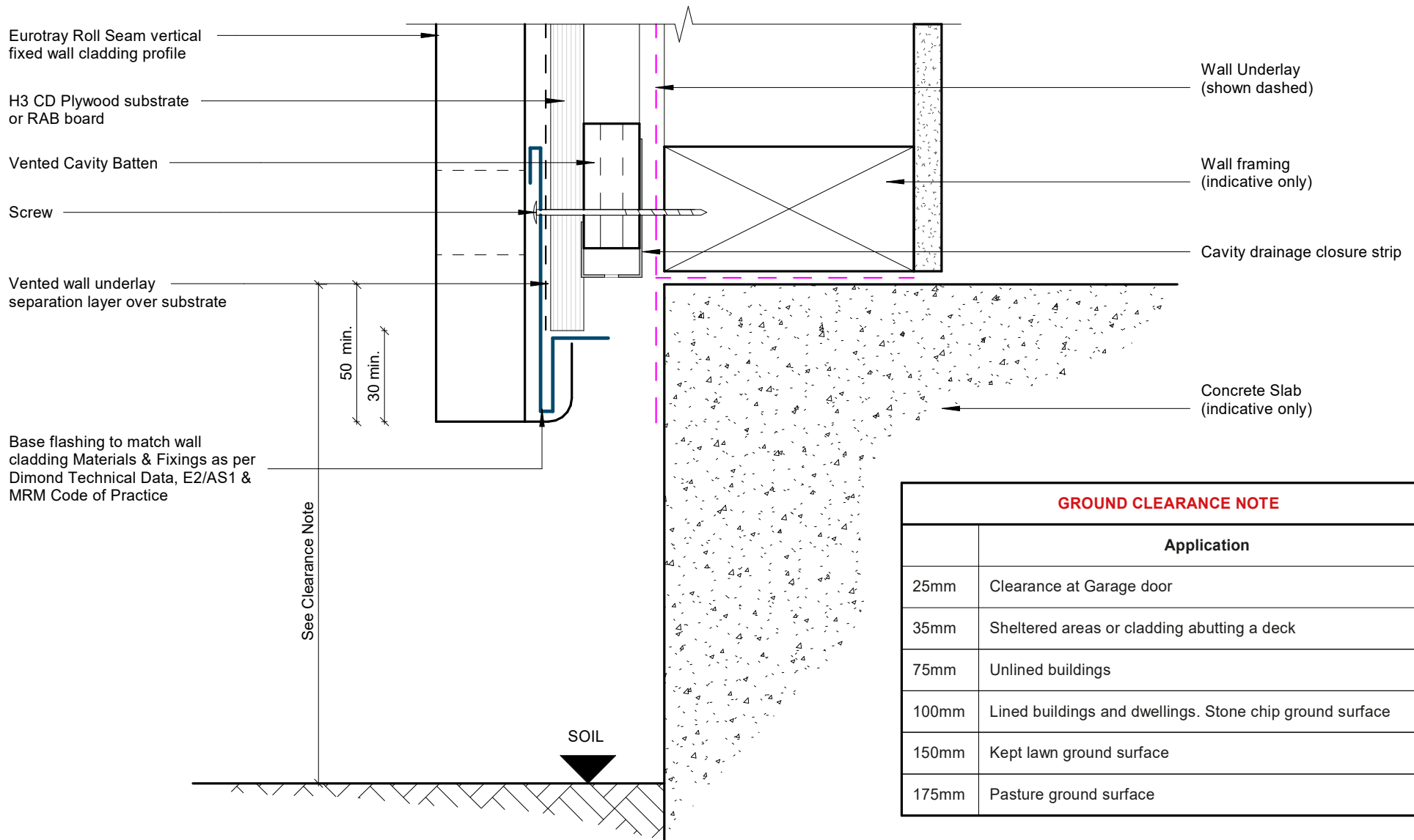
Internal Corner Detail

Rev: 1 Eurotray Roll Seam Residential Vertical Cladding



©Dimond 2023, all rights reserved. The information and specifications contained in this document are proprietary to Dimond and may not be used other than for the purpose of designing or building a roof or roofing system solely using products supplied or approved by Dimond ("Permitted Purpose"). You may copy this document solely for the Permitted Purpose, but may not otherwise copy, publish, distribute or modify this document without Dimond's prior written consent. Dimond will not be liable for any use of this document or information and specifications contained in this document, other than for the Permitted Purpose

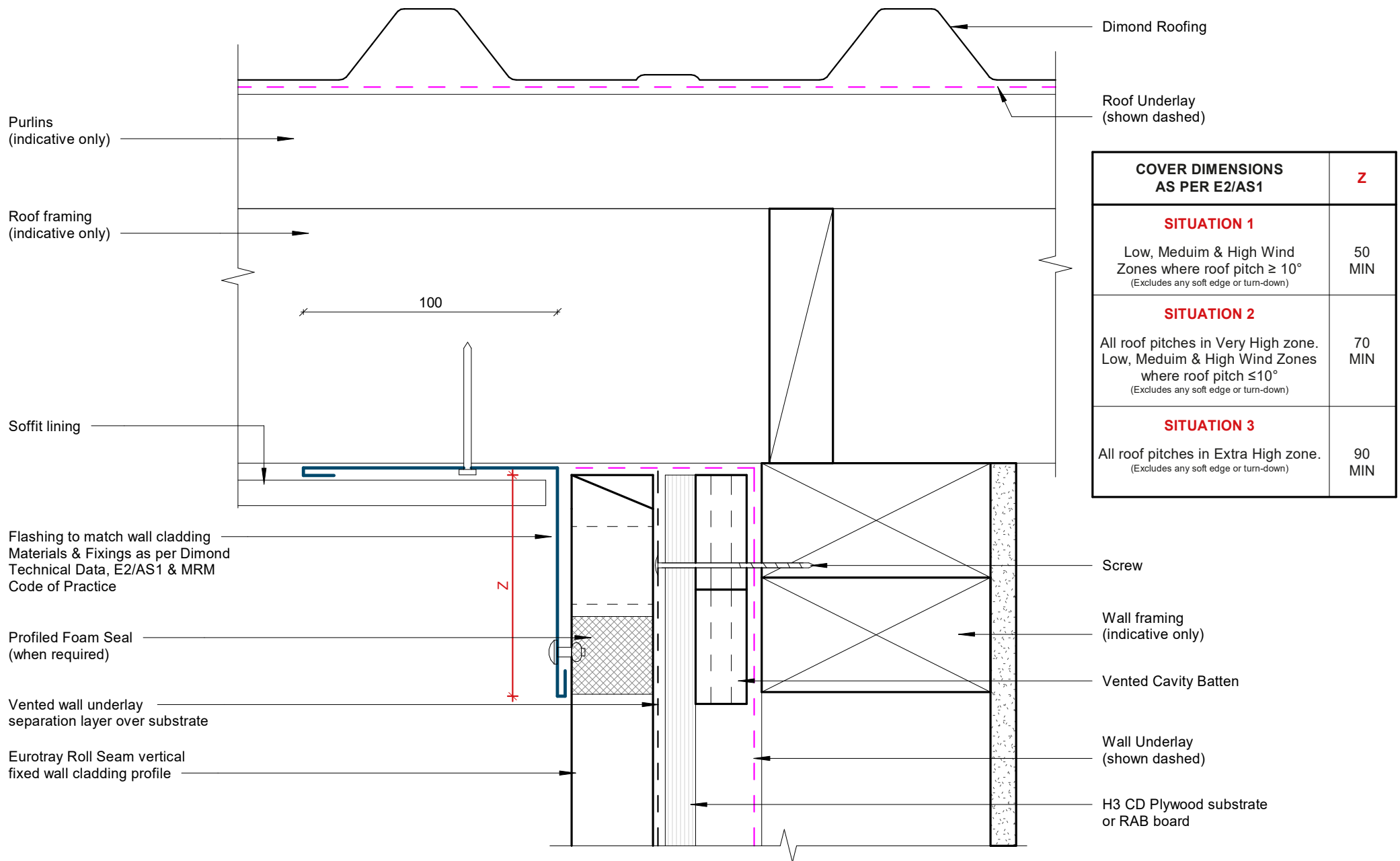
Date: Aug 2025 Scale: 1 : 2 Sheet: RSRVC05



GROUND CLEARANCE NOTE

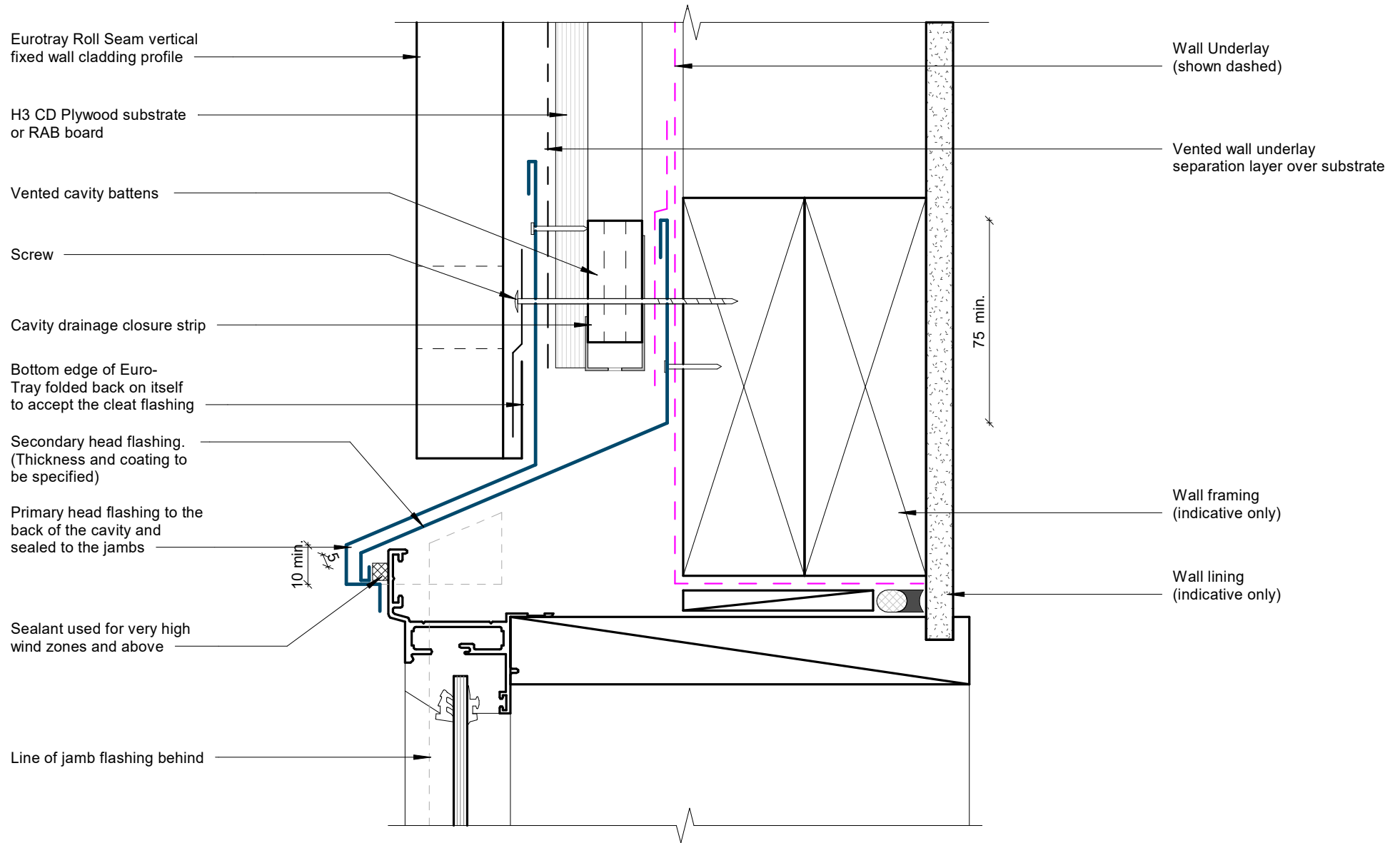
Application	
25mm	Clearance at Garage door
35mm	Sheltered areas or cladding abutting a deck
75mm	Unlined buildings
100mm	Lined buildings and dwellings. Stone chip ground surface
150mm	Kept lawn ground surface
175mm	Pasture ground surface

Base Detail



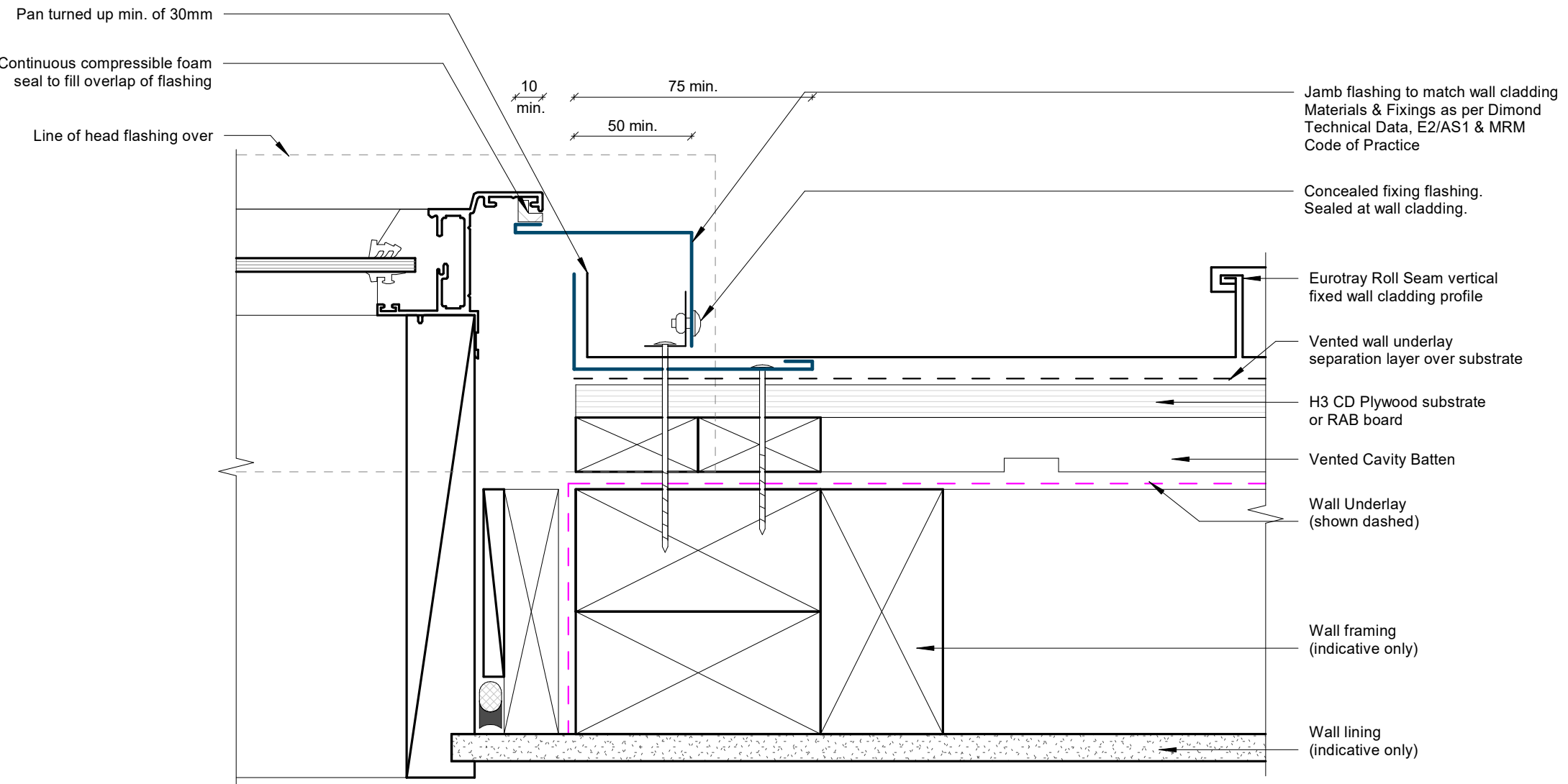
COVER DIMENSIONS AS PER E2/AS1	Z
SITUATION 1 Low, Medium & High Wind Zones where roof pitch $\geq 10^\circ$ (Excludes any soft edge or turn-down)	50 MIN
SITUATION 2 All roof pitches in Very High zone. Low, Medium & High Wind Zones where roof pitch $\leq 10^\circ$ (Excludes any soft edge or turn-down)	70 MIN
SITUATION 3 All roof pitches in Extra High zone. (Excludes any soft edge or turn-down)	90 MIN

Soffit Detail



Flush Window Head Detail

Rev: 1 Eurotray Roll Seam Residential Vertical Cladding



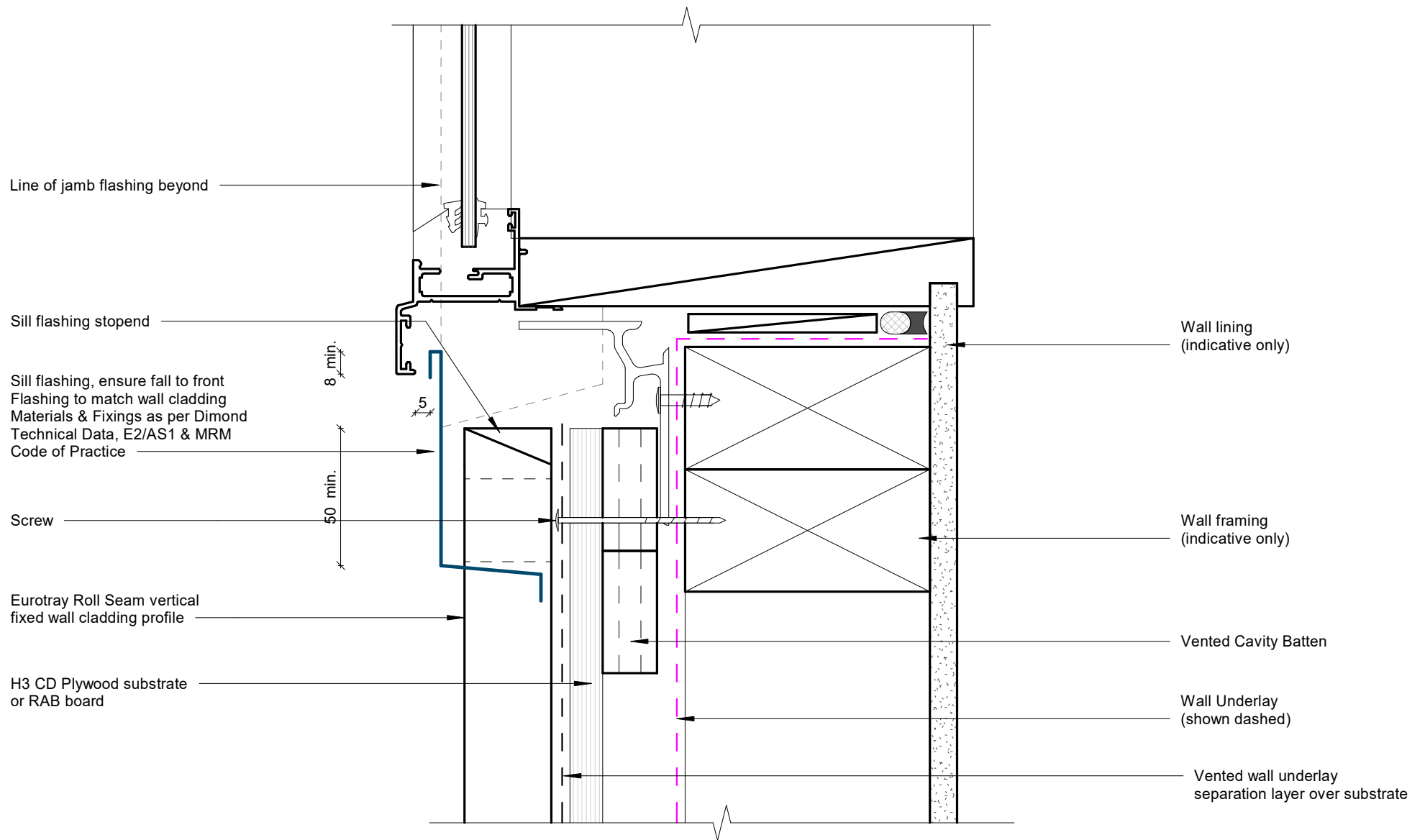
Flush Window Jamb Detail

Rev: 1 Eurotray Roll Seam Residential Vertical Cladding



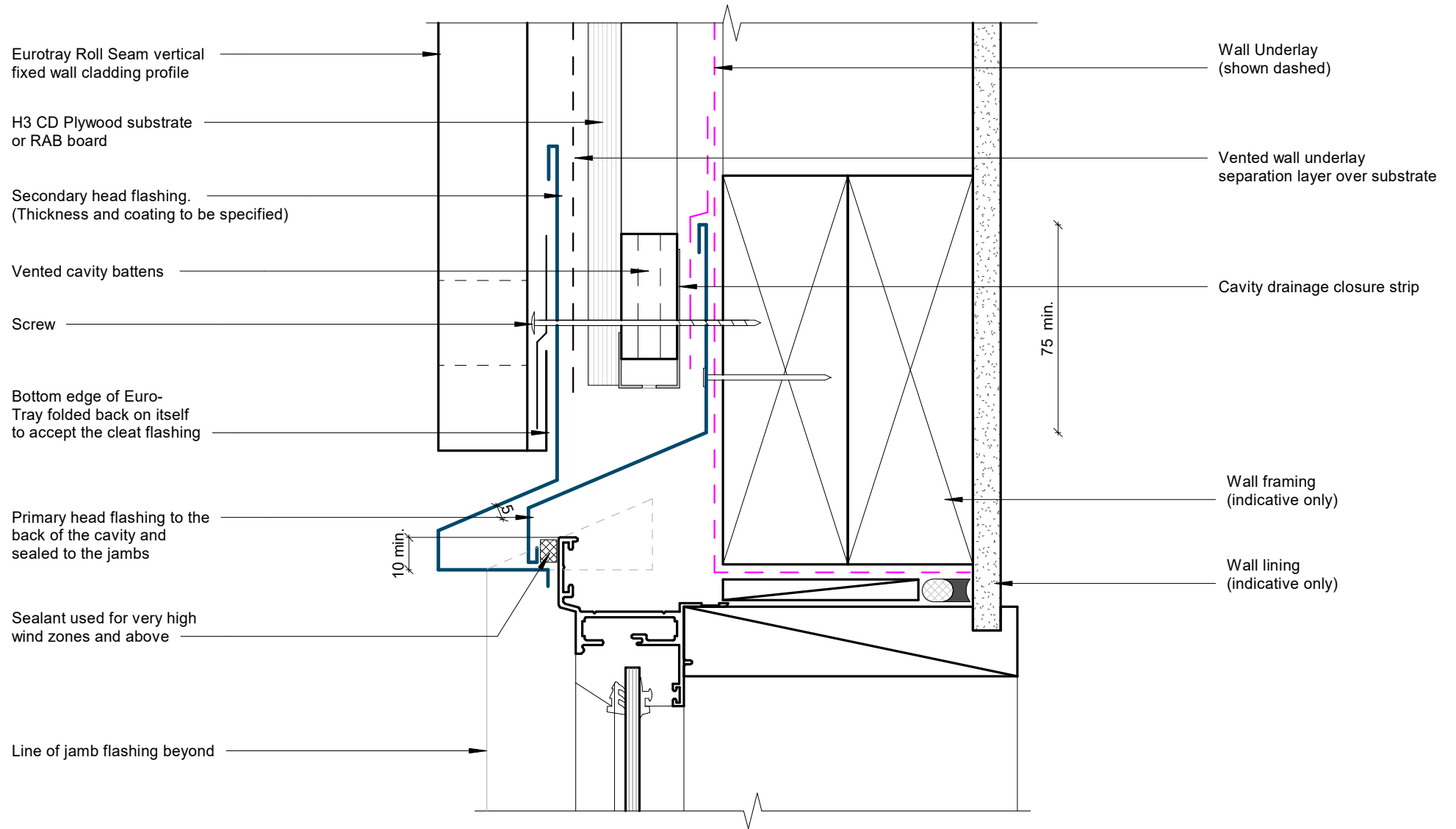
©Dimond 2023, all rights reserved. The information and specifications contained in this document are proprietary to Dimond and may not be used other than for the purpose of designing or building a roof or roofing system solely using products supplied or approved by Dimond ("Permitted Purpose"). You may copy this document solely for the Permitted Purpose, but may not otherwise copy, publish, distribute or modify this document without Dimond's prior written consent. Dimond will not be liable for any use of this document or information and specifications contained in this document, other than for the Permitted Purpose

Date: Aug 2025 Scale: 1 : 2 Sheet: RSRVC09



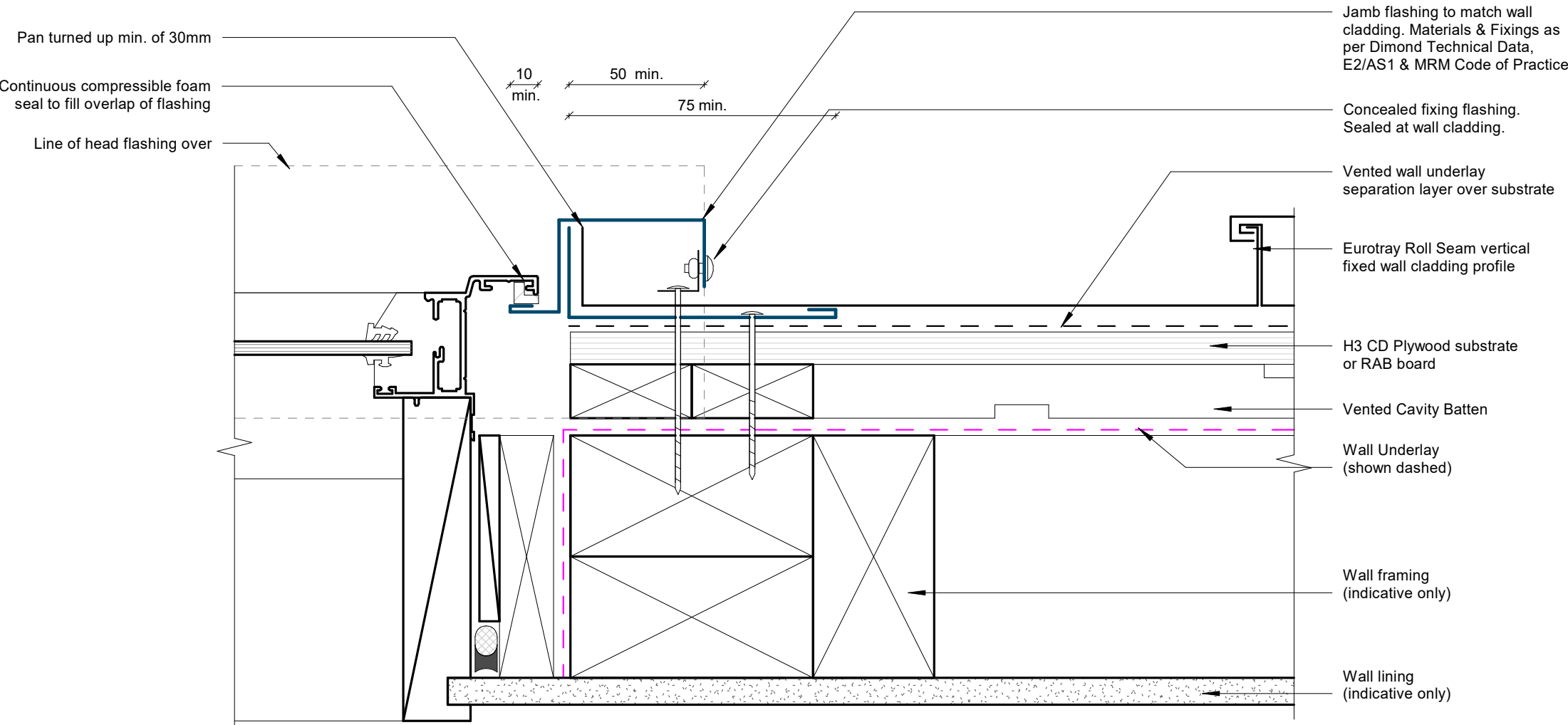
Flush Window Sill Detail

Rev: 1 Eurotray Roll Seam Residential Vertical Cladding



Recessed Window/Door Head Detail

Rev: 1 Eurotray Roll Seam Residential Vertical Cladding



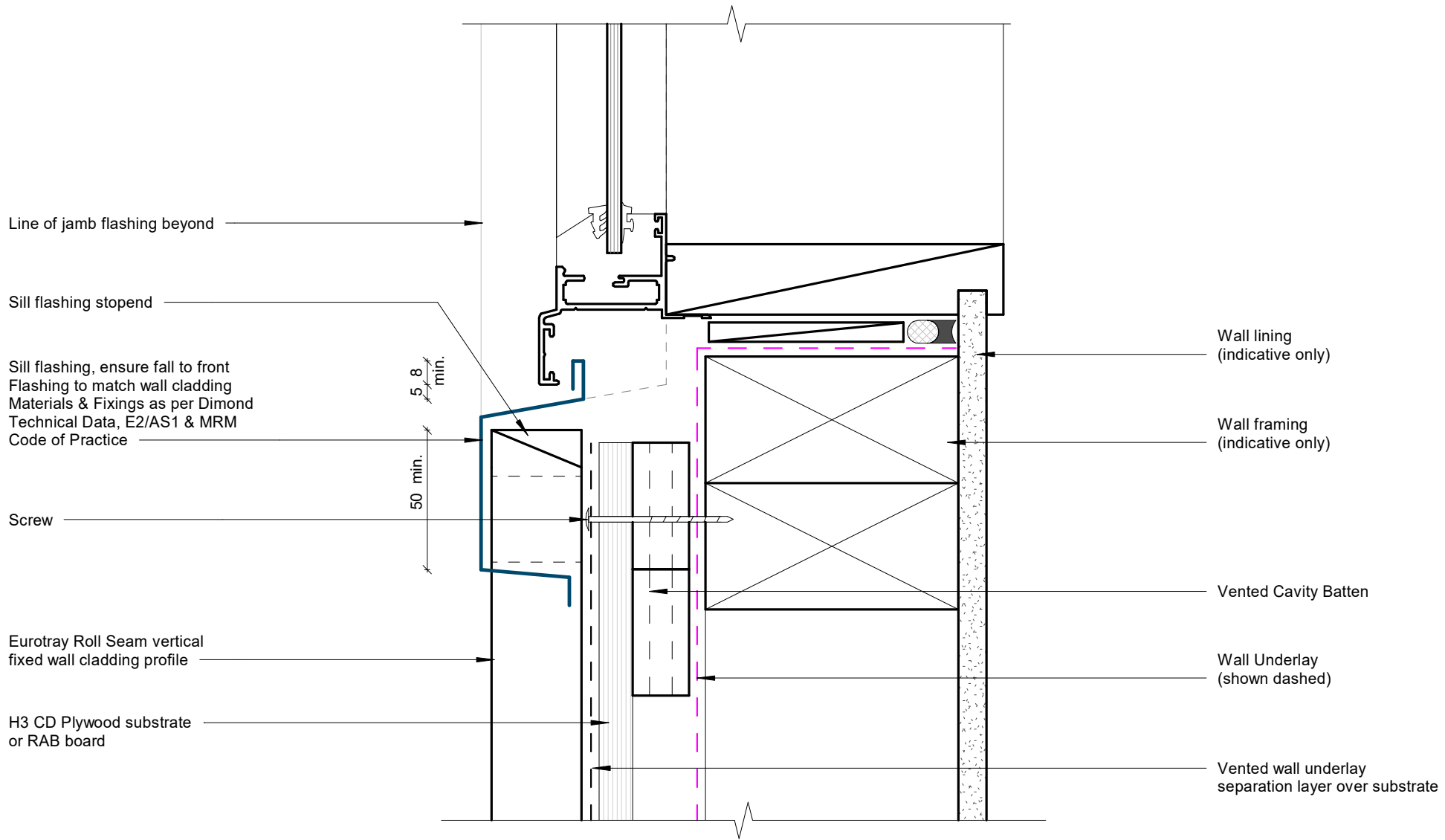
Recessed Window/Door Jamb Detail

Rev: 1 Eurotray Roll Seam Residential Vertical Cladding



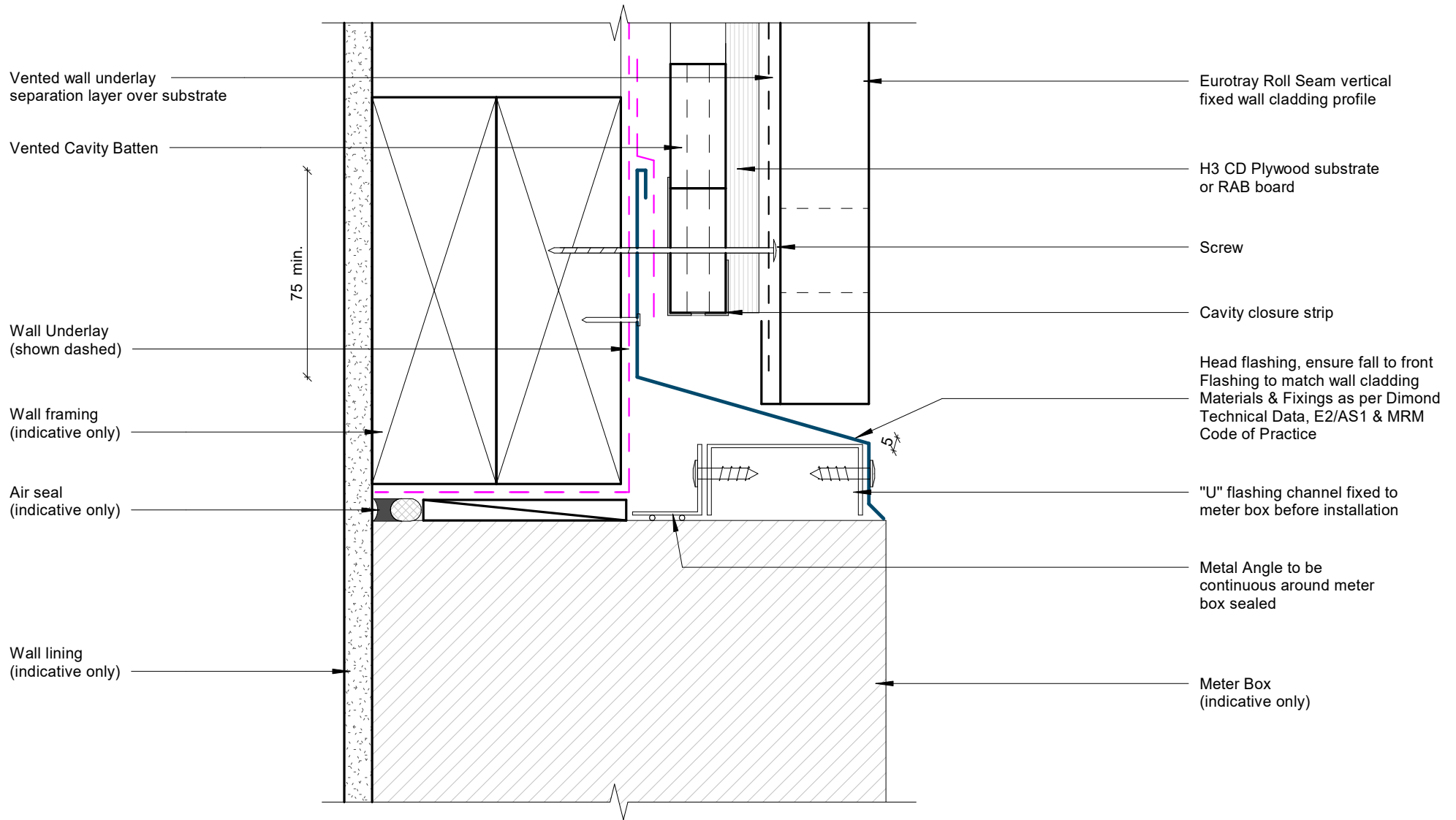
©Dimond 2023, all rights reserved. The information and specifications contained in this document are proprietary to Dimond and may not be used other than for the purpose of designing or building a roof or roofing system solely using products supplied or approved by Dimond ("Permitted Purpose"). You may copy this document solely for the Permitted Purpose, but may not otherwise copy, publish, distribute or modify this document without Dimond's prior written consent. Dimond will not be liable for any use of this document or information and specifications contained in this document, other than for the Permitted Purpose

Date: Aug 2025 Scale: 1 : 2 Sheet: RSRVC12



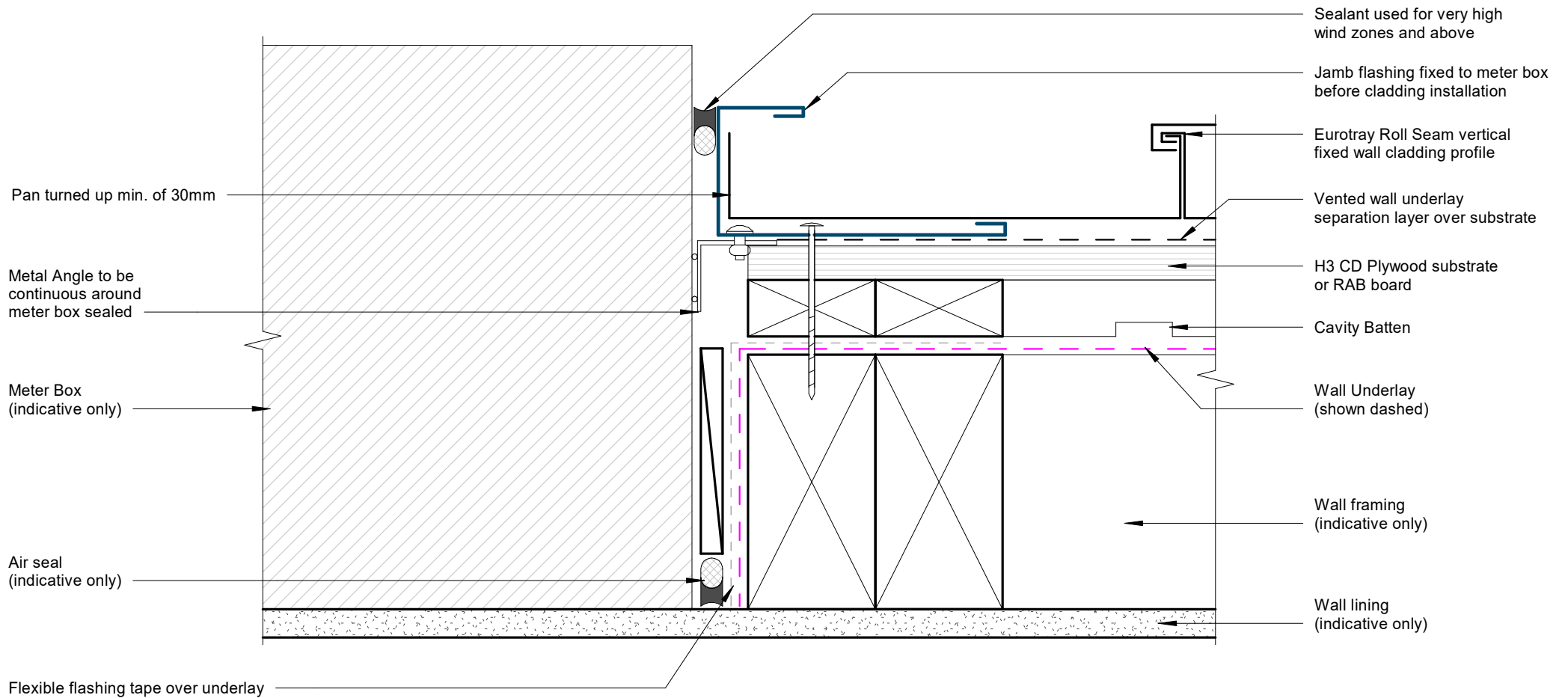
Recessed Window Sill Detail

Rev: 1 Eurotray Roll Seam Residential Vertical Cladding



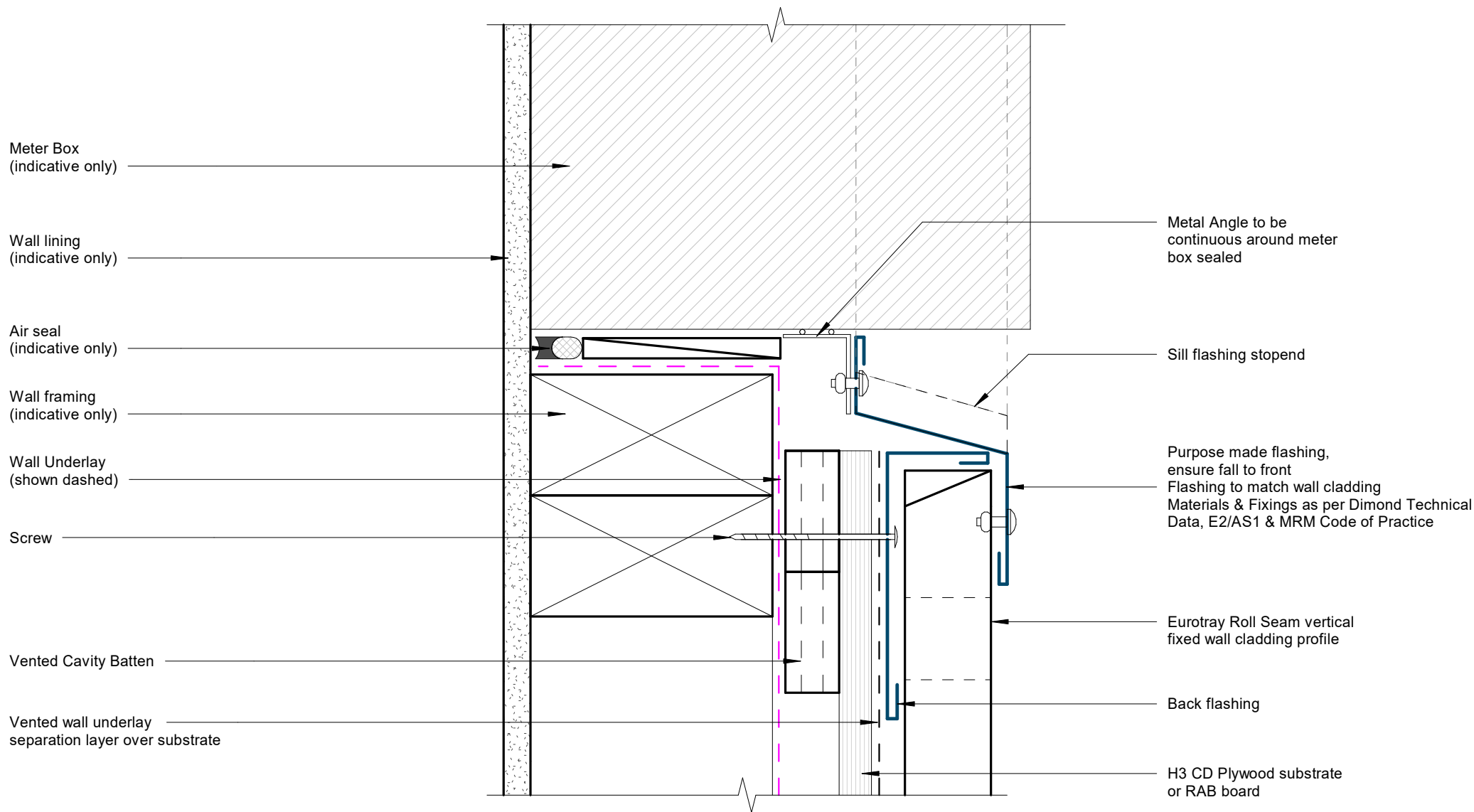
Meterbox Head Detail

Rev: 1 Eurotray Roll Seam Residential Vertical Cladding



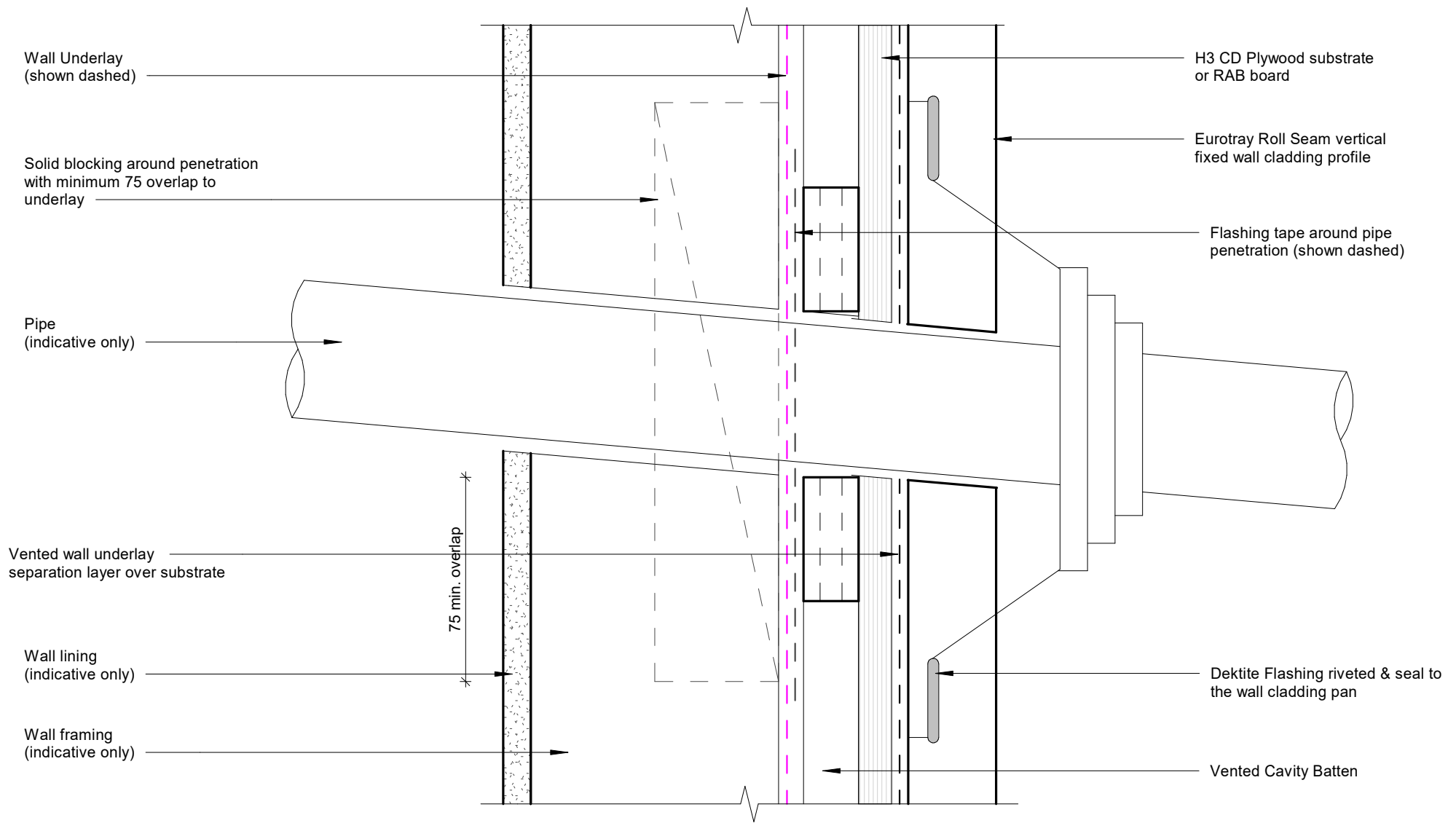
Meterbox Jamb Detail

Rev: 1 Eurotray Roll Seam Residential Vertical Cladding



Meterbox Sill Detail

Rev: 1 Eurotray Roll Seam Residential Vertical Cladding



Pipe Penetration Detail

Rev: 1 Eurotray Roll Seam Residential Vertical Cladding

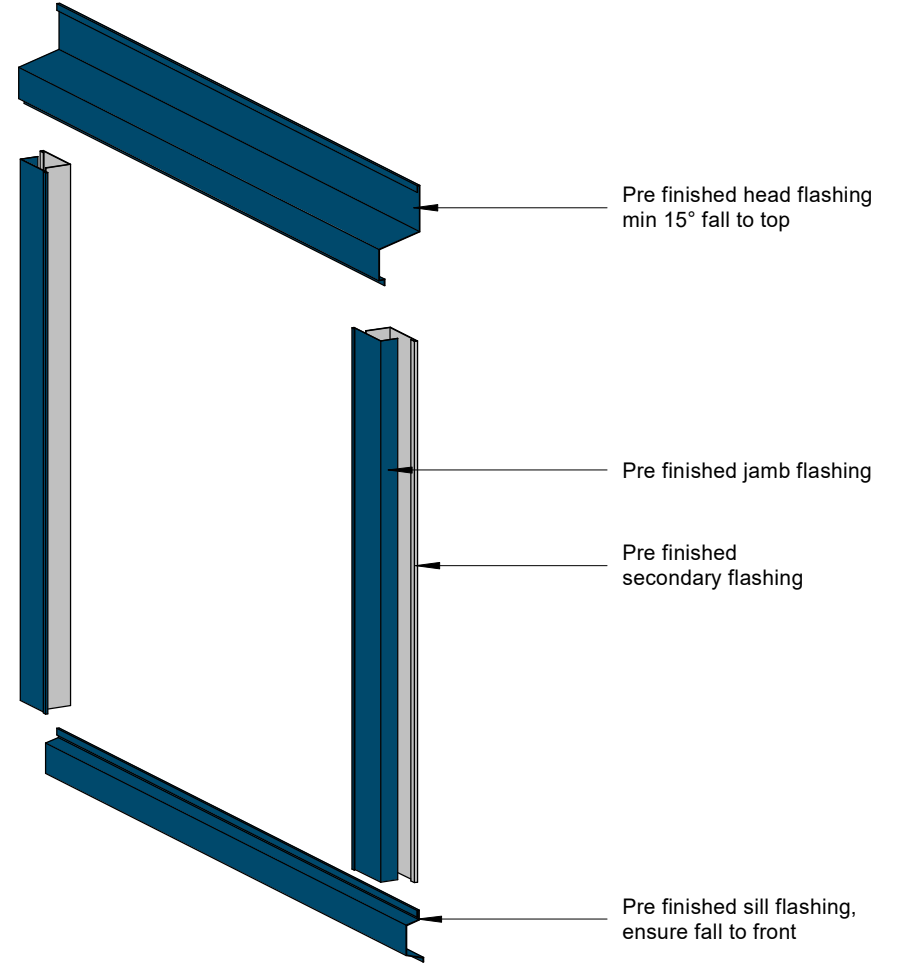
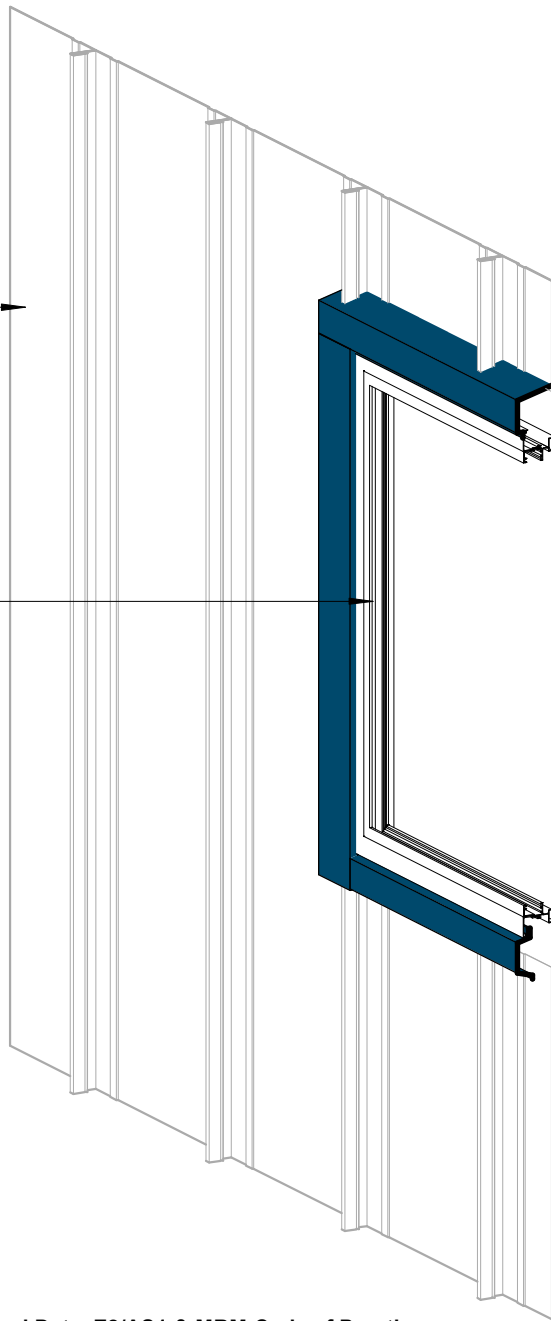


©Dimond 2023, all rights reserved. The information and specifications contained in this document are proprietary to Dimond and may not be used other than for the purpose of designing or building a roof or roofing system solely using products supplied or approved by Dimond ("Permitted Purpose"). You may copy this document solely for the Permitted Purpose, but may not otherwise copy, publish, distribute or modify this document without Dimond's prior written consent. Dimond will not be liable for any use of this document or information and specifications contained in this document, other than for the Permitted Purpose

Date: Aug 2025 Scale: 1 : 2 Sheet: RSRVC17

Eurotray Roll Seam
vertical fixed wall cladding

Aluminium joinery frame
(indicative only)



Flashing to match wall cladding
Materials & Fixings as per Dimond Technical Data, E2/AS1 & MRM Code of Practice

3D Window Flashing Detail

Rev: 1 Eurotray Roll Seam Residential Vertical Cladding