

# EUROTRAY® ANGLE SEAM

## RESIDENTIAL VERTICAL WALL CLADDING

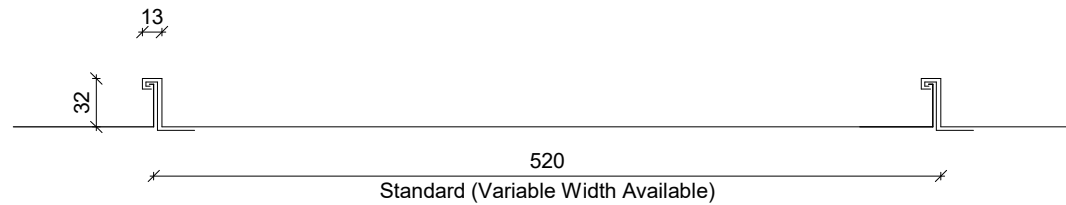
### DETAILS:

### REV:

### DATE:

ASRVC00	Cover Sheet	1	Aug 2025
ASRVC01	Profile Summary	1	Aug 2025
ASRVC02	Typical Flashings Details	1	Aug 2025
ASRVC03	Barge Wall Detail	1	Aug 2025
ASRVC04	External Corner Detail	1	Aug 2025
ASRVC05	Internal Corner Detail	1	Aug 2025
ASRVC06	Base Detail	1	Aug 2025
ASRVC07	Soffit Detail	1	Aug 2025
ASRVC08	Flush Window Head Detail	1	Aug 2025
ASRVC09	Flush Window Jamb Detail	1	Aug 2025
ASRVC10	Flush Window Sill Detail	1	Aug 2025
ASRVC11	Recessed Window/Door Head Detail	1	Aug 2025
ASRVC12	Recessed Window/Door Jamb Detail	1	Aug 2025
ASRVC13	Recessed Window Sill Detail	1	Aug 2025
ASRVC14	Meterbox Head Detail	1	Aug 2025
ASRVC15	Meterbox Jamb Detail	1	Aug 2025
ASRVC16	Meterbox Sill Detail	1	Aug 2025
ASRVC17	Pipe Penetration Detail	1	Aug 2025
ASRVC18	3D Window Flashing Detail	1	Aug 2025

PROFILE OVERVIEW	
MINIMUM PITCH	3°
RIB TYPE	High
RIBS PER SHEET	2 Ribs per sheet
WIDTH	520mm Pan



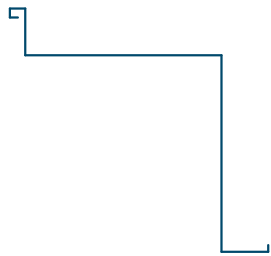
## Profile Summary

Rev: 1 Eurotray Angle Seam Residential Vertical Cladding

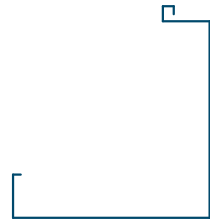


©Dimond 2023, all rights reserved. The information and specifications contained in this document are proprietary to Dimond and may not be used other than for the purpose of designing or building a roof or roofing system solely using products supplied or approved by Dimond ("Permitted Purpose"). You may copy this document solely for the Permitted Purpose, but may not otherwise copy, publish, distribute or modify this document without Dimond's prior written consent. Dimond will not be liable for any use of this document or information and specifications contained in this document, other than for the Permitted Purpose

Date: Aug 2025 Scale: 1 : 5 Sheet: **ASRVC01**



External Corner Flashing



Internal Corner Flashing



Base Flashing



Soffit Flashing



Window Sill Flashing



Window Jamb Flashing



Window Head Flashing



Sill Flashing - Meterbox



Jamb Flashing - Meterbox



Head Flashing - Meterbox

## Typical Flashings Details

Rev: 1 Eurotray Angle Seam Residential Vertical Cladding

Under flashing to match roofing.  
Materials & Fixings as per Dimond  
Technical Data, E2/AS1 & MRM  
Code of Practice

Barge flashing to match roofing.  
Materials & Fixings as per  
Dimond Technical Data, E2/AS1  
& MRM Code of Practice

Vented wall underlay  
separation layer over substrate

Prefinished scw with  
neoprene washer

Eurotray Angle Seam vertical  
fixed wall cladding profile

Vented cavity battens

Screw

H3 CD Plywood substrate  
or RAB board

Wall framing  
(indicative only)

Wall underlay  
(shown dashed)

Dimond Roofing Profile

Vented roof underlay

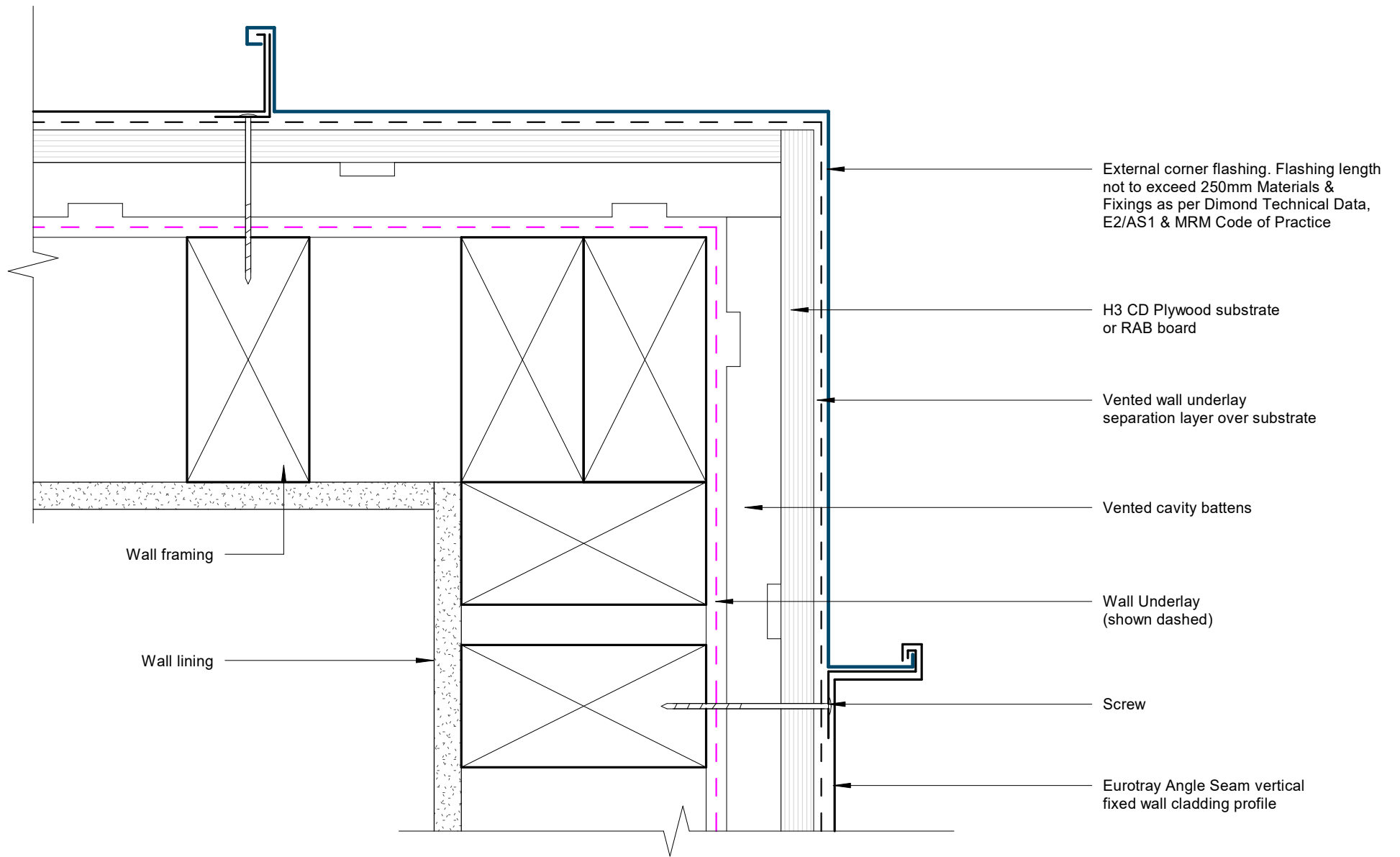
Vented cavity battens

Roof framing  
(indicative only)

Z

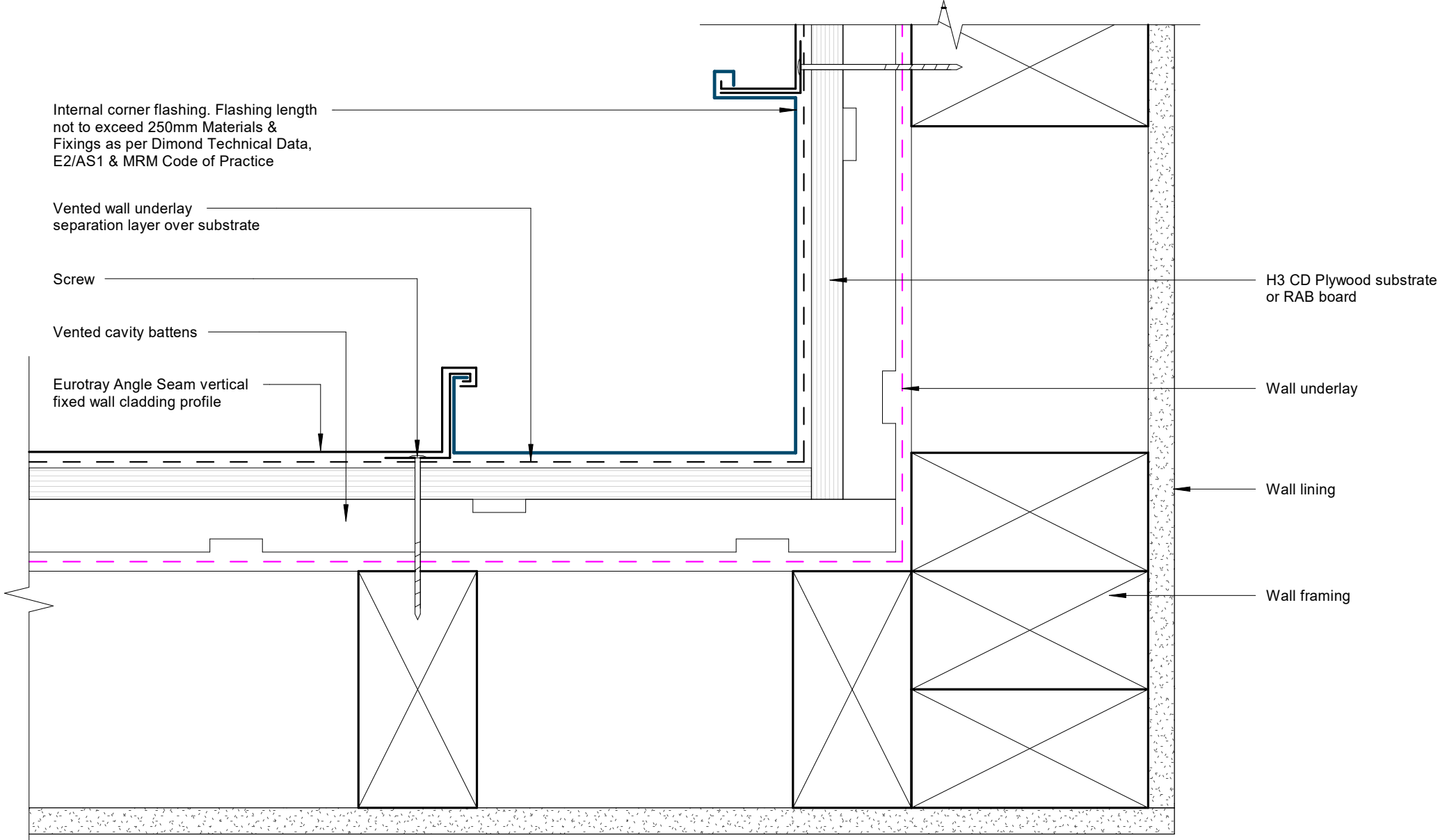
COVER DIMENSIONS AS PER E2/AS1	Z
<b>SITUATION 1</b> Low, Medium & High Wind Zones where roof pitch $\geq 10^\circ$ (Excludes any soft edge or turn-down)	50 MIN
<b>SITUATION 2</b> All roof pitches in Very High zone. Low, Medium & High Wind Zones where roof pitch $\leq 10^\circ$ (Excludes any soft edge or turn-down)	70 MIN
<b>SITUATION 3</b> All roof pitches in Extra High zone. (Excludes any soft edge or turn-down)	90 MIN

## Barge Wall Detail



## External Corner Detail

Rev: 1 Eurotray Angle Seam Residential Vertical Cladding



Internal corner flashing. Flashing length not to exceed 250mm Materials & Fixings as per Dimond Technical Data, E2/AS1 & MRM Code of Practice

Vented wall underlay separation layer over substrate

Screw

Vented cavity battens

Eurotray Angle Seam vertical fixed wall cladding profile

H3 CD Plywood substrate or RAB board

Wall underlay

Wall lining

Wall framing

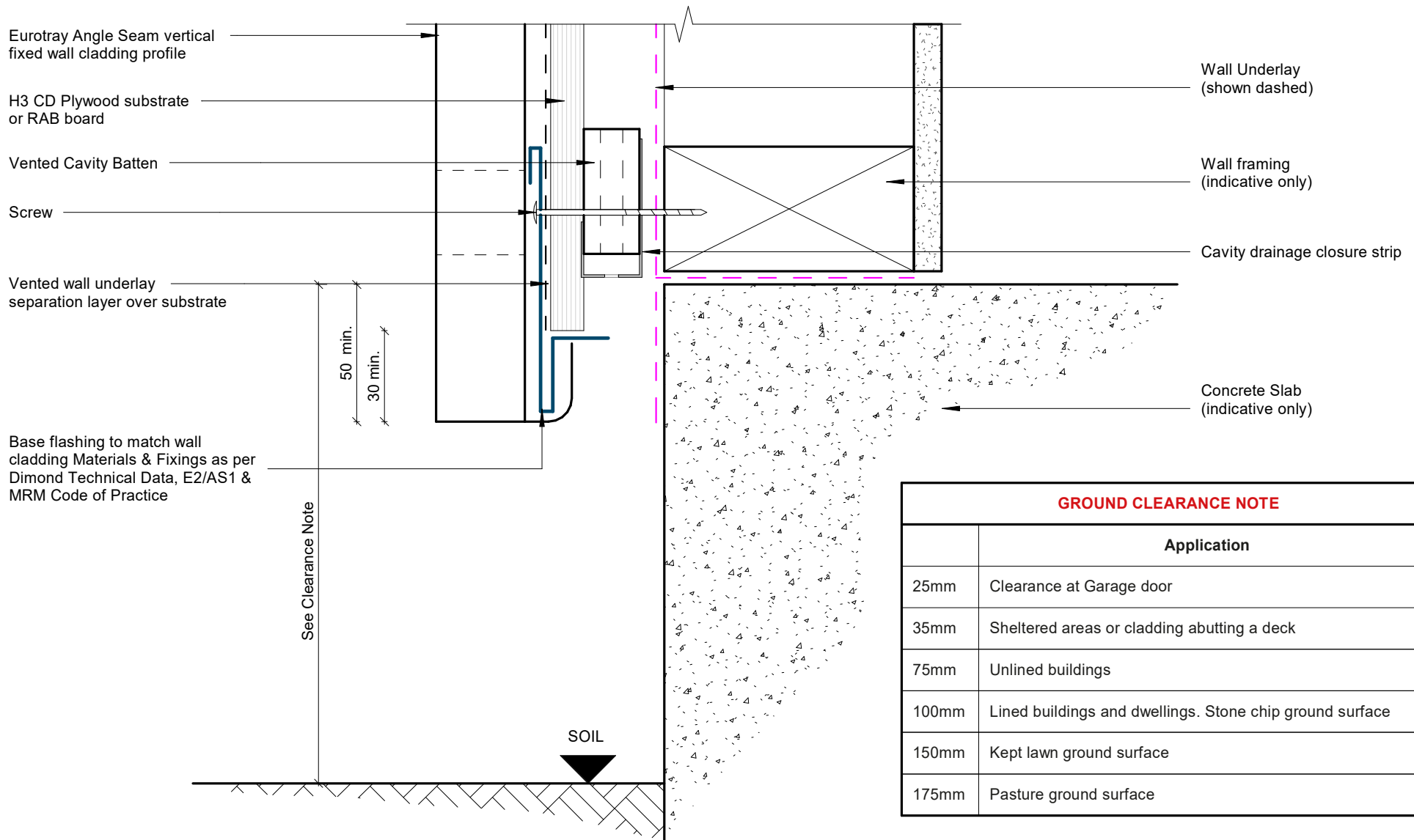
# Internal Corner Detail

Rev: 1 Eurotray Angle Seam Residential Vertical Cladding



©Dimond 2023, all rights reserved. The information and specifications contained in this document are proprietary to Dimond and may not be used other than for the purpose of designing or building a roof or roofing system solely using products supplied or approved by Dimond ("Permitted Purpose"). You may copy this document solely for the Permitted Purpose, but may not otherwise copy, publish, distribute or modify this document without Dimond's prior written consent. Dimond will not be liable for any use of this document or information and specifications contained in this document, other than for the Permitted Purpose

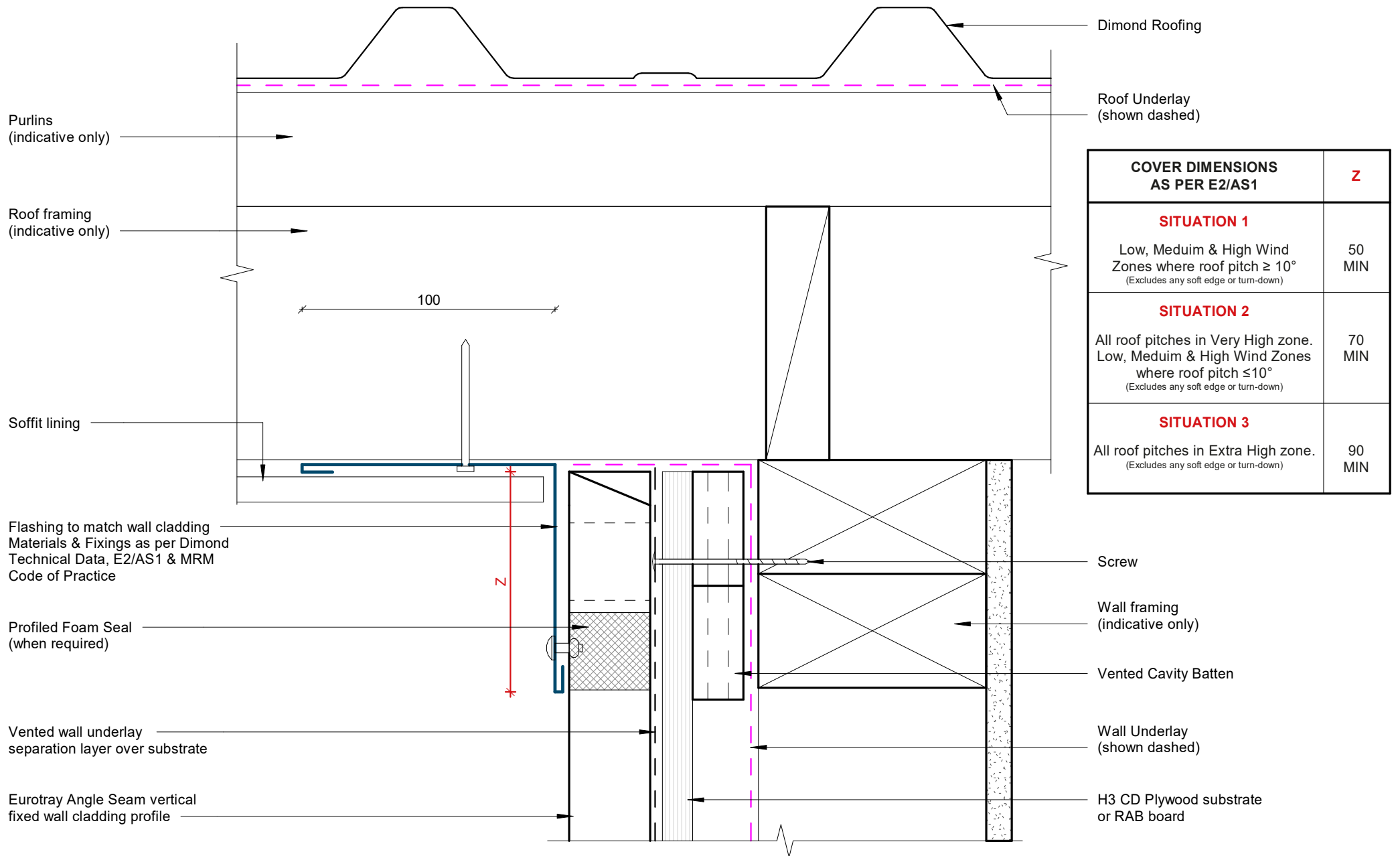
Date: Aug 2025 Scale: 1 : 2 Sheet: ASRVC05



**GROUND CLEARANCE NOTE**

Application	
25mm	Clearance at Garage door
35mm	Sheltered areas or cladding abutting a deck
75mm	Unlined buildings
100mm	Lined buildings and dwellings. Stone chip ground surface
150mm	Kept lawn ground surface
175mm	Pasture ground surface

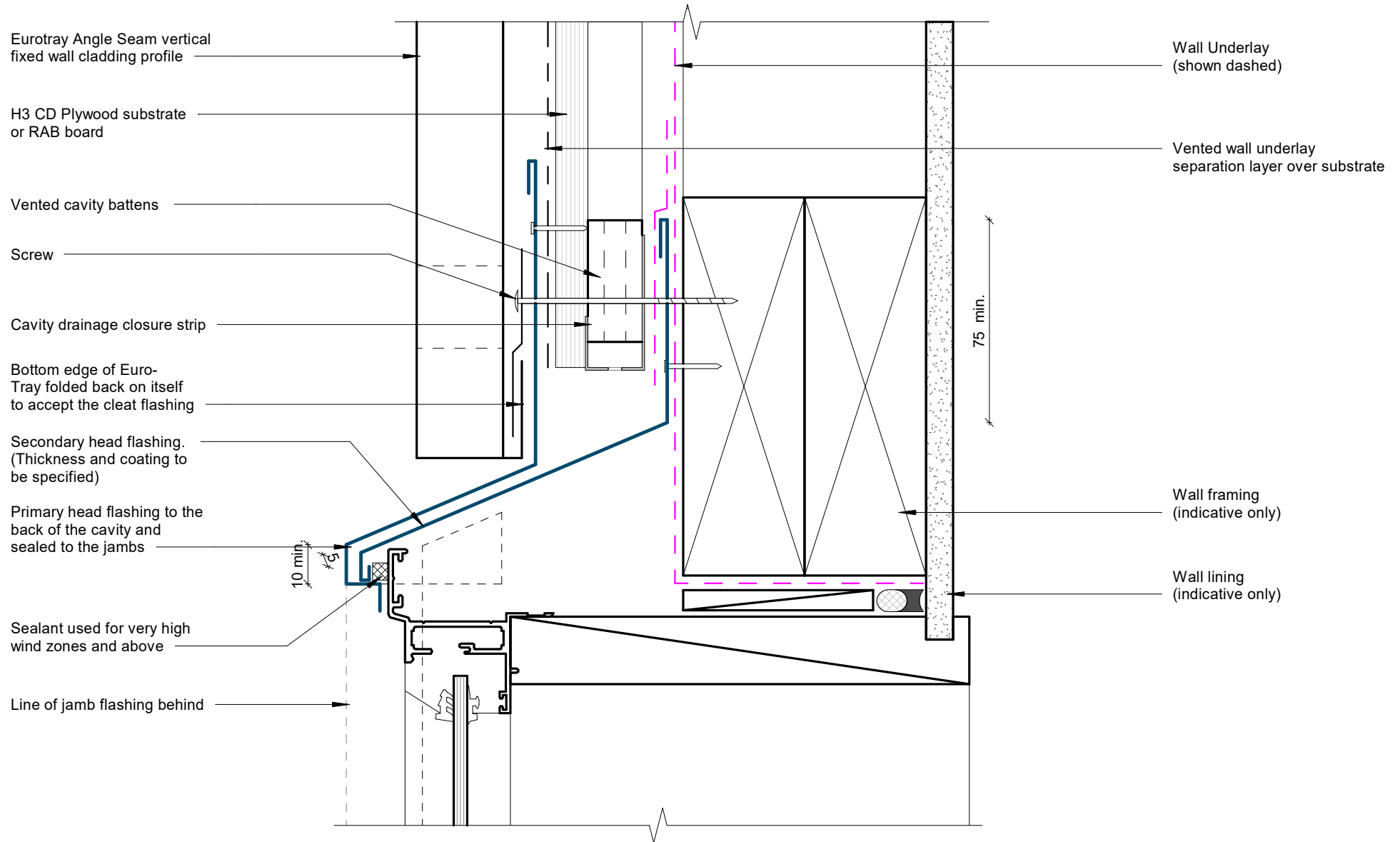
## Base Detail



COVER DIMENSIONS AS PER E2/AS1	Z
<b>SITUATION 1</b> Low, Medium & High Wind Zones where roof pitch $\geq 10^\circ$ (Excludes any soft edge or turn-down)	50 MIN
<b>SITUATION 2</b> All roof pitches in Very High zone. Low, Medium & High Wind Zones where roof pitch $\leq 10^\circ$ (Excludes any soft edge or turn-down)	70 MIN
<b>SITUATION 3</b> All roof pitches in Extra High zone. (Excludes any soft edge or turn-down)	90 MIN

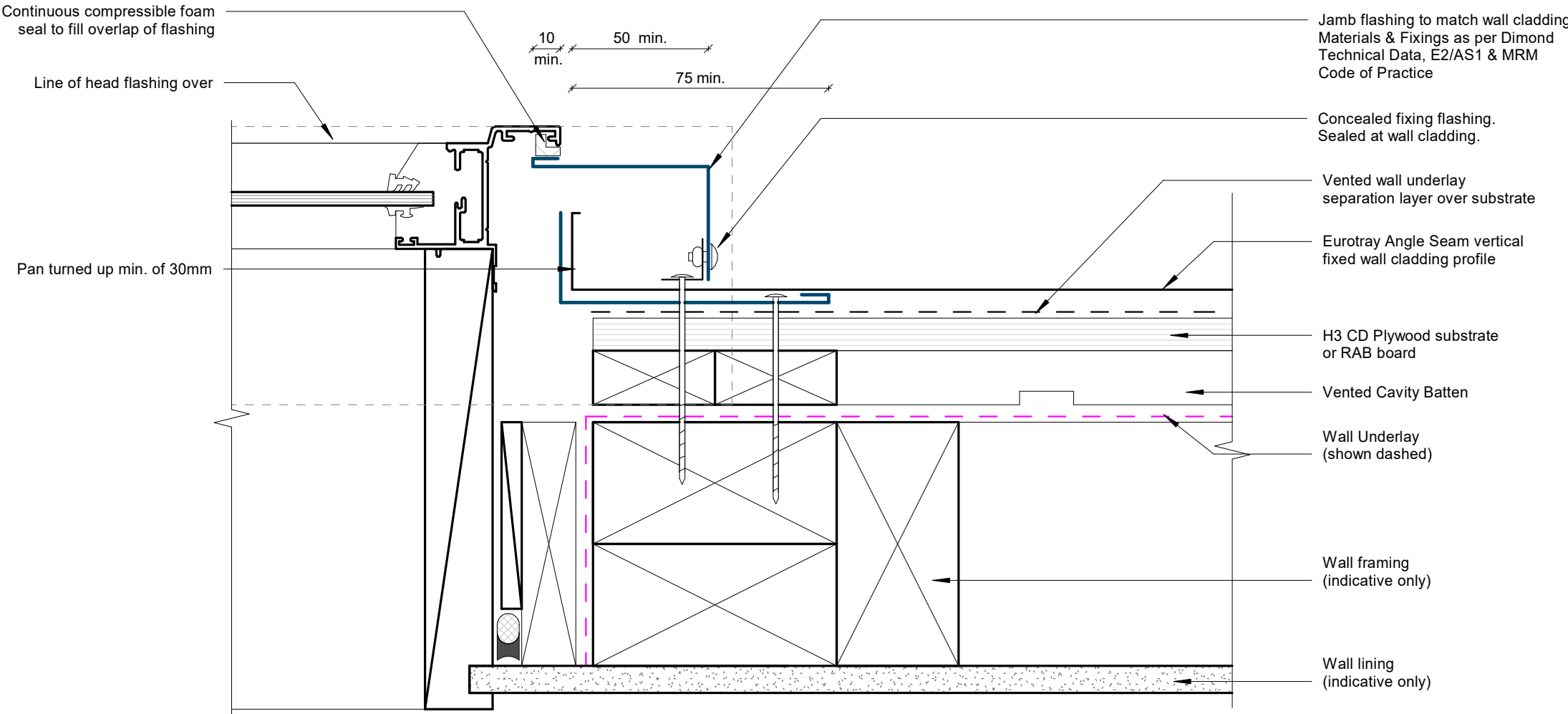
## Soffit Detail

Rev: 1 Eurotray Angle Seam Residential Vertical Cladding



## Flush Window Head Detail

Rev: 1 Eurotray Angle Seam Residential Vertical Cladding



# Flush Window Jamb Detail

Rev: 1 Eurotray Angle Seam Residential Vertical Cladding



©Dimond 2023, all rights reserved. The information and specifications contained in this document are proprietary to Dimond and may not be used other than for the purpose of designing or building a roof or roofing system solely using products supplied or approved by Dimond ("Permitted Purpose"). You may copy this document solely for the Permitted Purpose, but may not otherwise copy, publish, distribute or modify this document without Dimond's prior written consent. Dimond will not be liable for any use of this document or information and specifications contained in this document, other than for the Permitted Purpose

Date: Aug 2025 Scale: 1 : 2 Sheet: ASRVC09

Line of jamb flashing beyond

Sill flashing stopend

Sill flashing, ensure fall to front  
Flashing to match wall cladding  
Materials & Fixings as per Dimond  
Technical Data, E2/AS1 & MRM  
Code of Practice

Screw

Eurotray Angle Seam vertical  
fixed wall cladding profile

H3 CD Plywood substrate  
or RAB board

8 min.

50 min.

5

Wall lining  
(indicative only)

Wall framing  
(indicative only)

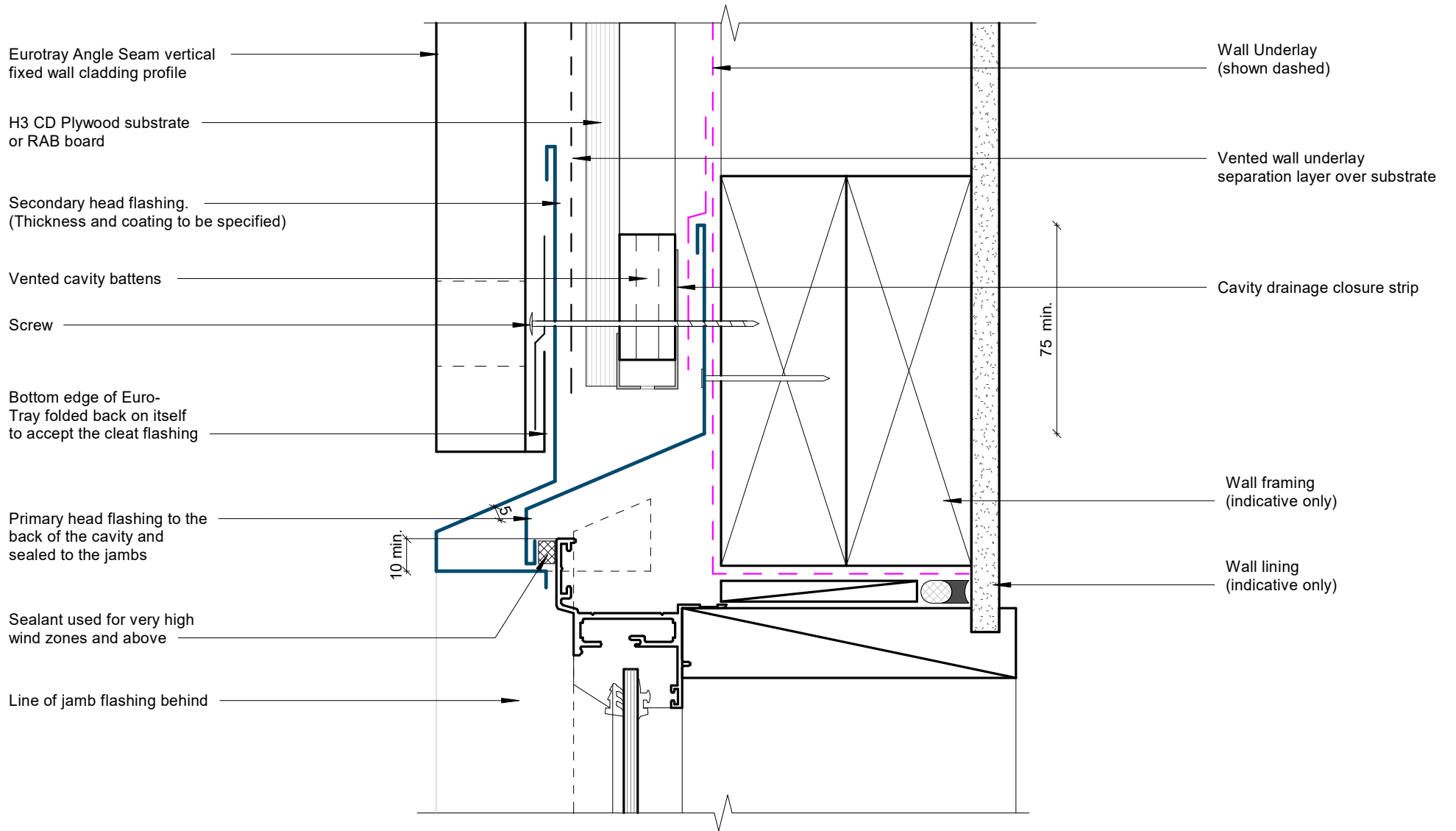
Ventend Cavity Batten

Wall Underlay  
(shown dashed)

Vented wall underlay  
separation layer over substrate

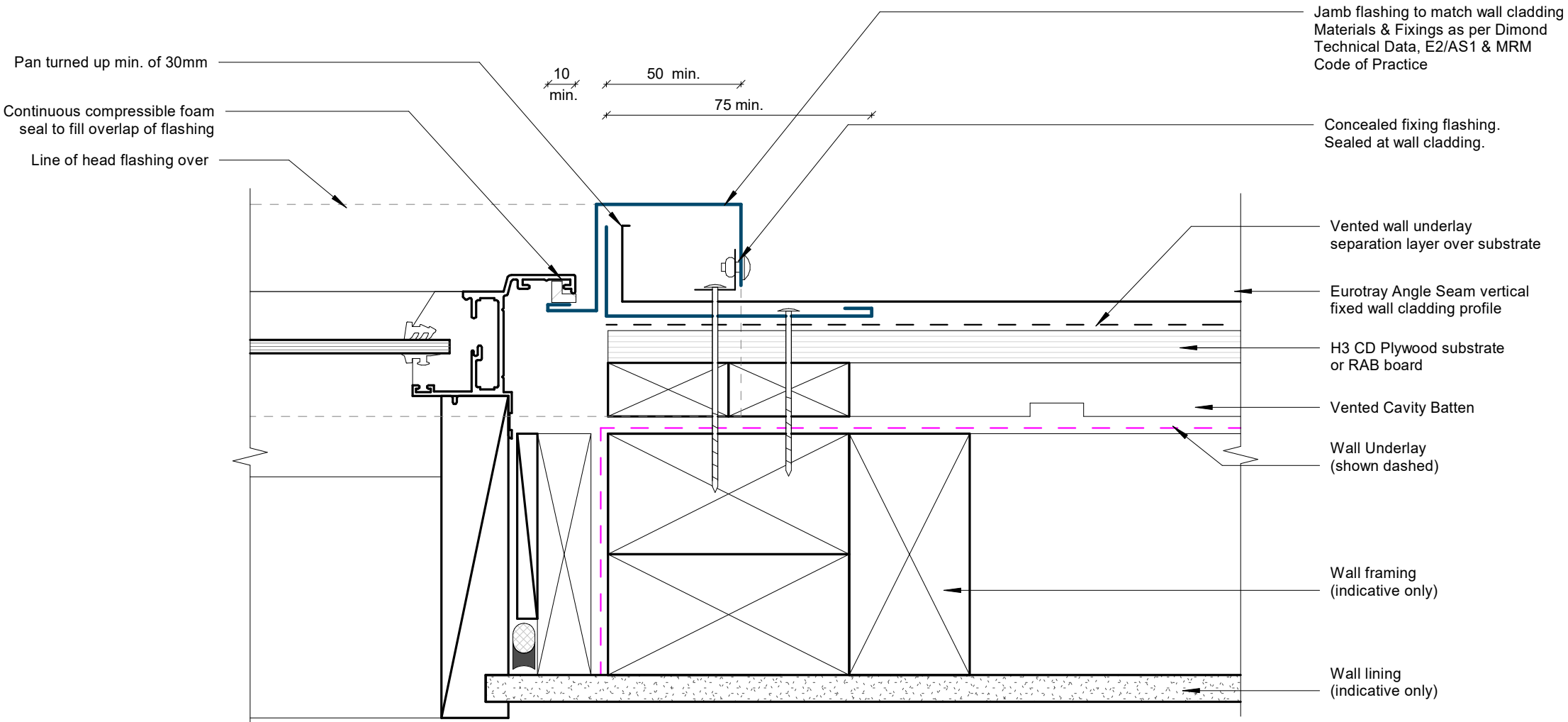
## Flush Window Sill Detail

Rev: 1 Eurotray Angle Seam Residential Vertical Cladding



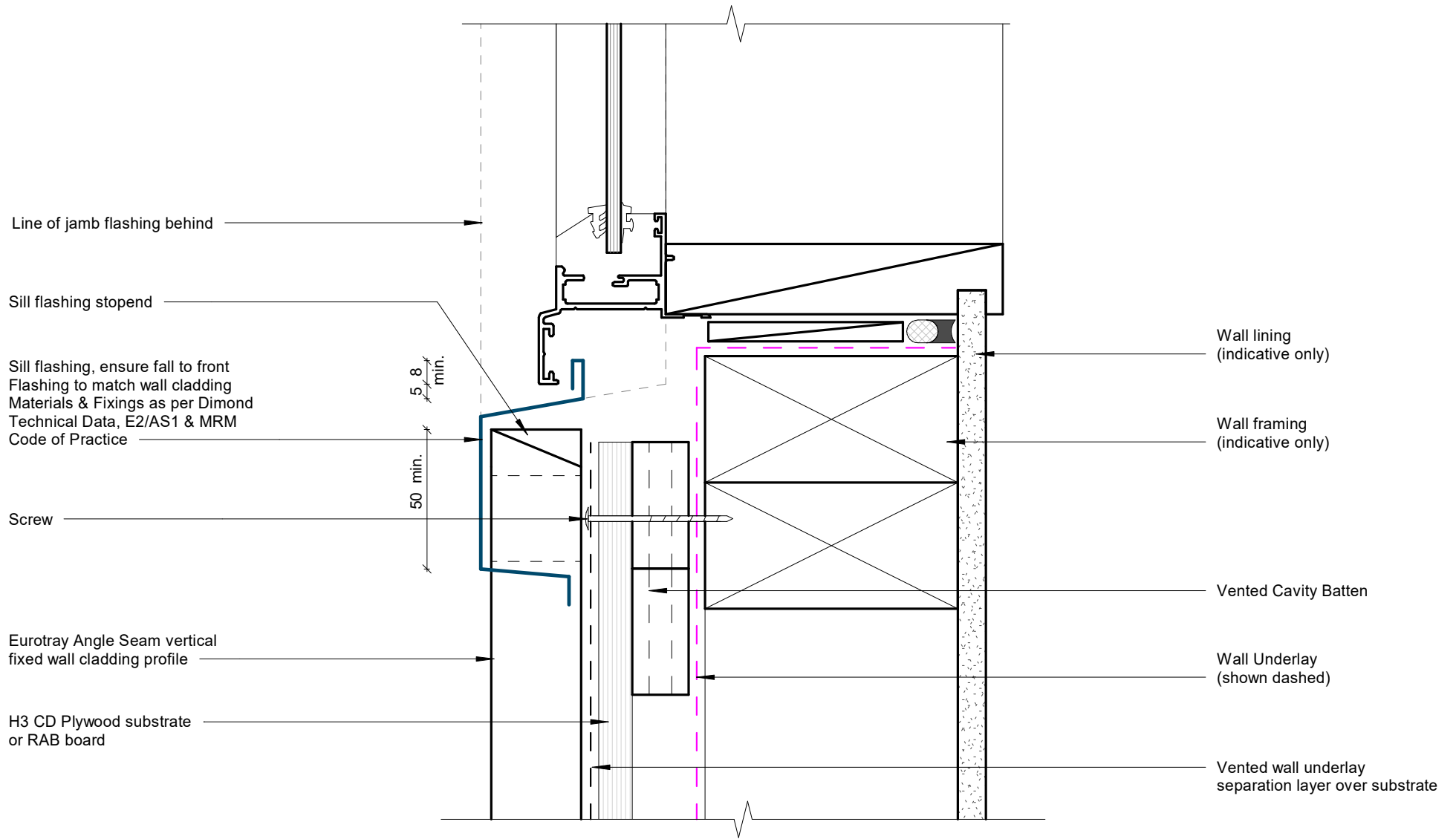
## Recessed Window/Door Head Detail

Rev: 1 Eurotray Angle Seam Residential Vertical Cladding



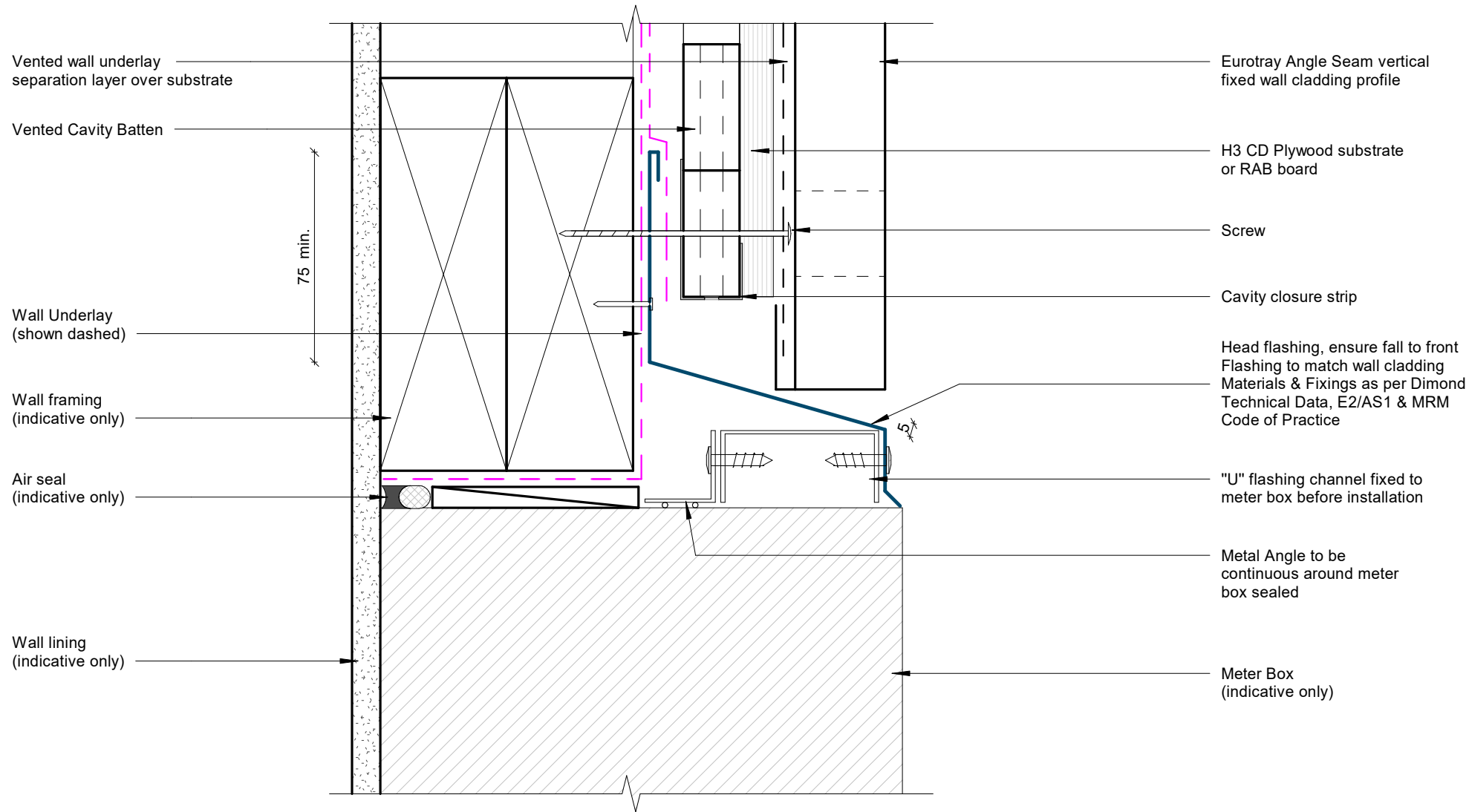
## Recessed Window/Door Jamb Detail

Rev: 1 Eurotray Angle Seam Residential Vertical Cladding



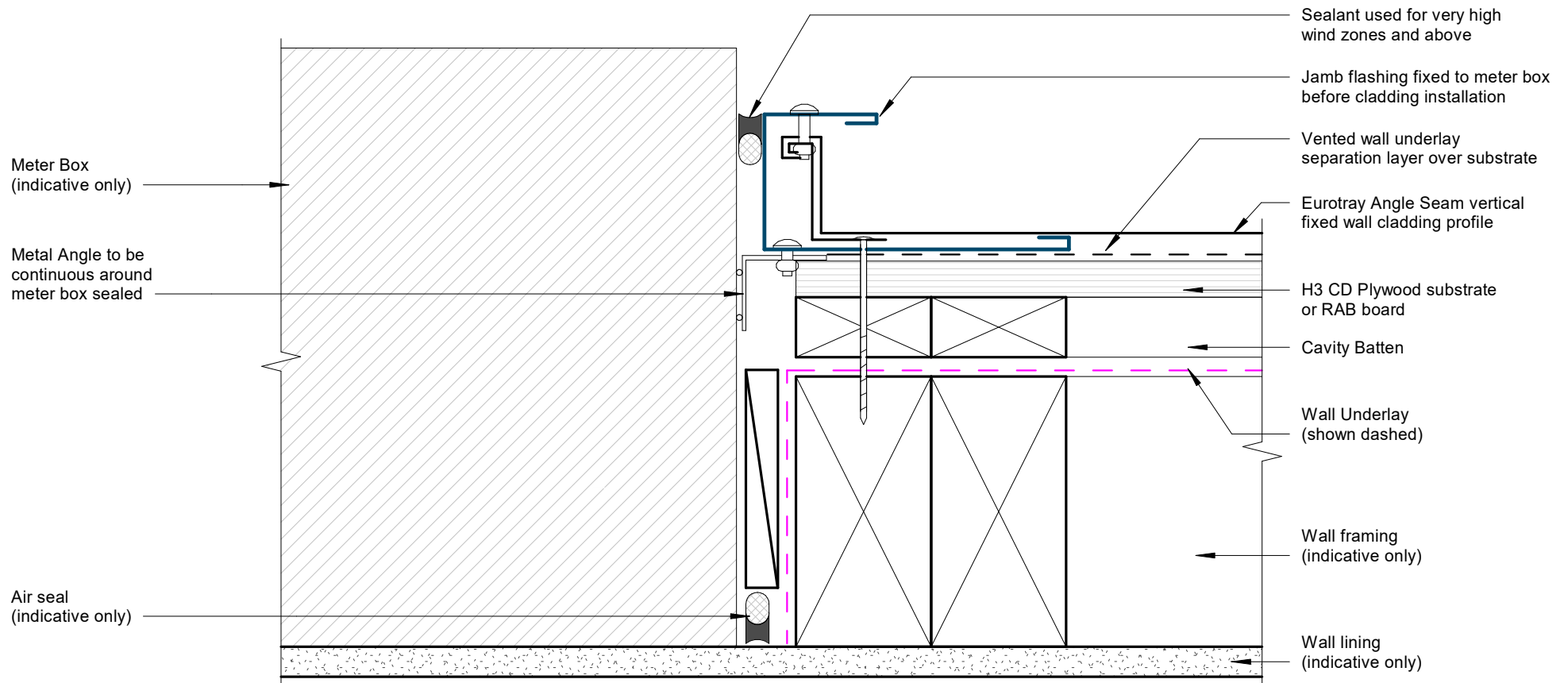
## Recessed Window Sill Detail

Rev: 1 Eurotray Angle Seam Residential Vertical Cladding



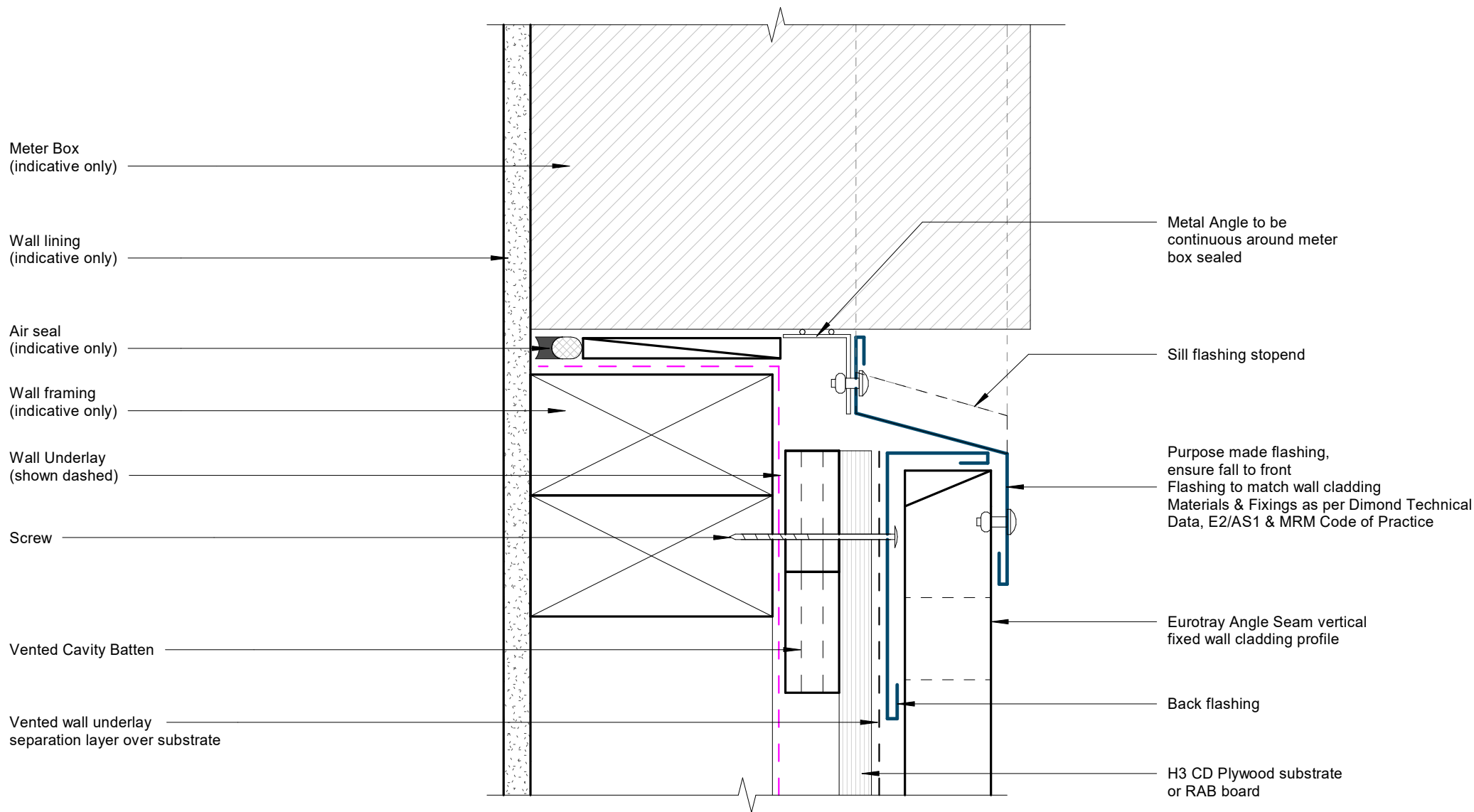
## Meterbox Head Detail

Rev: 1 Eurotray Angle Seam Residential Vertical Cladding



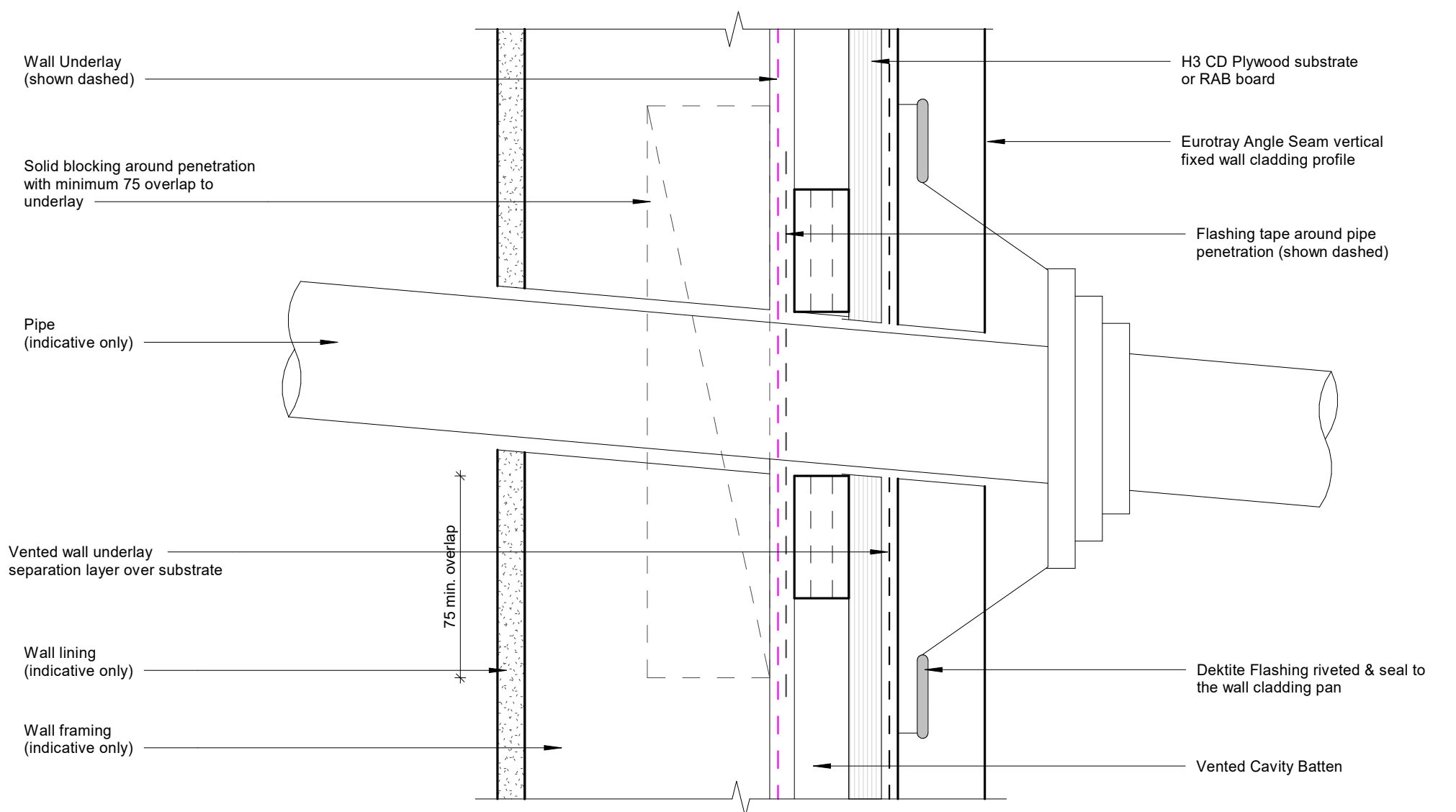
## Meterbox Jamb Detail

Rev: 1 Eurotray Angle Seam Residential Vertical Cladding



## Meterbox Sill Detail

Rev: 1 Eurotray Angle Seam Residential Vertical Cladding

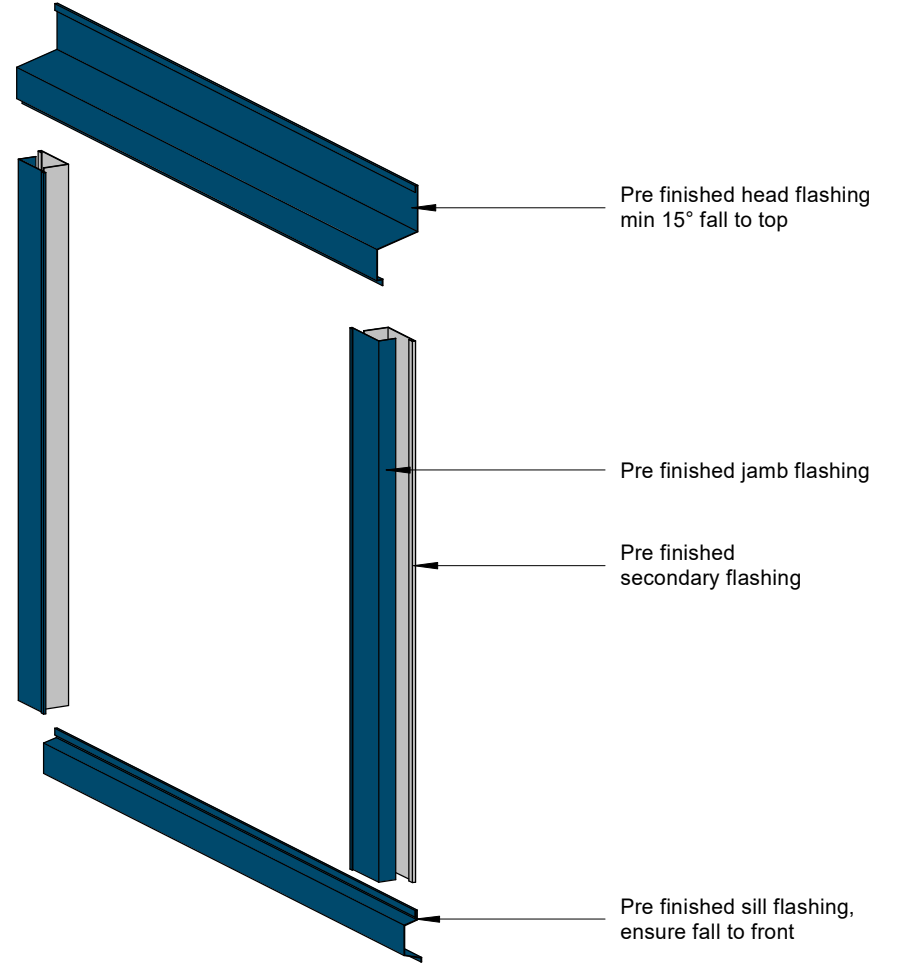
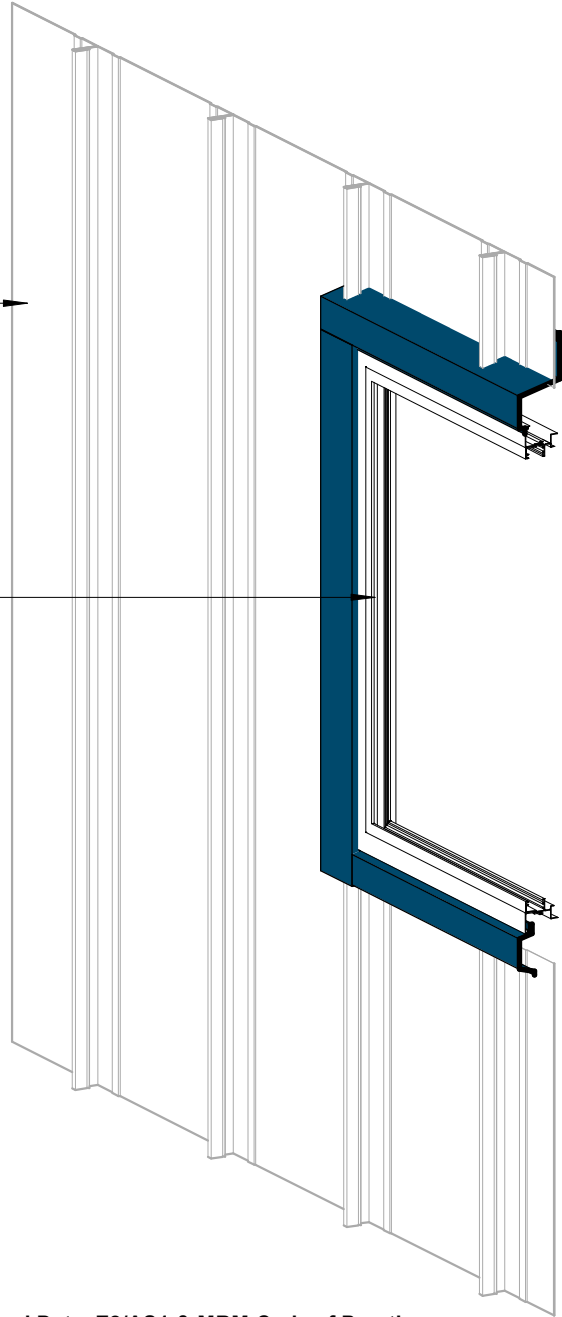


# Pipe Penetration Detail

Rev: 1 Eurotray Angle Seam Residential Vertical Cladding

Eurotray Angle Seam  
vertical fixed wall cladding

Aluminium joinery frame  
(indicative only)



Flashing to match wall cladding  
Materials & Fixings as per Dimond Technical Data, E2/AS1 & MRM Code of Practice

## 3D Window Flashing Detail

Rev: 1 Eurotray Angle Seam Residential Vertical Cladding