

EUROTRAY® ANGLE SEAM

RESIDENTIAL HORIZONTAL WALL CLADDING

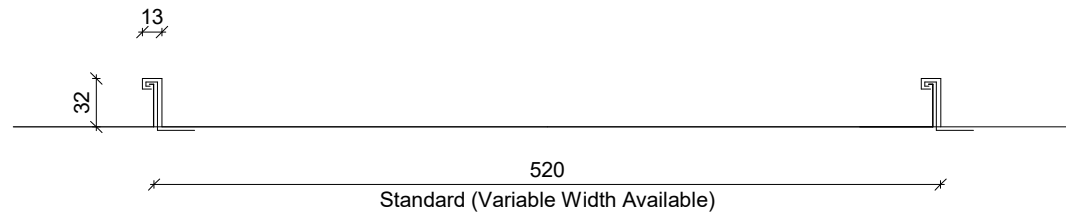
DETAILS:

REV:

DATE:

ASRH00	Cover Sheet	1	Sep 2025
ASRHC01	Profile Summary	1	Sep 2025
ASRHC02	Typical Flashings Details	1	Sep 2025
ASRHC03	Barge Wall Detail	1	Sep 2025
ASRHC04	External Corner Detail	1	Sep 2025
ASRHC05	Internal Corner Detail	1	Sep 2025
ASRHC06	Base Detail	1	Sep 2025
ASRHC07	Soffit Detail	1	Sep 2025
ASRHC08	Flush Window Head Detail	1	Sep 2025
ASRHC09	Flush Window Jamb Detail	1	Sep 2025
ASRHC10	Flush Window Sill Detail	1	Sep 2025
ASRHC11	Recessed Window/Door Head Detail	1	Sep 2025
ASRHC12	Recessed Window/Door Jamb Detail	1	Sep 2025
ASRHC13	Recessed Window Sill Detail	1	Sep 2025
ASRHC14	Meterbox Head Detail	1	Sep 2025
ASRHC15	Meterbox Jamb Detail	1	Sep 2025
ASRHC16	Meterbox Sill Detail	1	Sep 2025
ASRHC17	Pipe Penetration Detail	1	Sep 2025
ASRHC18	3D Window Flashing Detail	1	Sep 2025

PROFILE OVERVIEW	
RIB TYPE	High
RIBS PER SHEET	2 Ribs per sheet
WIDTH	520mm Pan



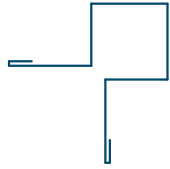
Profile Summary

Rev: 1 Eurotray Angle Seam Residential Horizontal Cladding

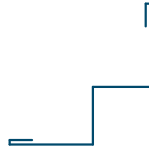


©Dimond 2023, all rights reserved. The information and specifications contained in this document are proprietary to Dimond and may not be used other than for the purpose of designing or building a roof or roofing system solely using products supplied or approved by Dimond ("Permitted Purpose"). You may copy this document solely for the Permitted Purpose, but may not otherwise copy, publish, distribute or modify this document without Dimond's prior written consent. Dimond will not be liable for any use of this document or information and specifications contained in this document, other than for the Permitted Purpose

Date: Sep 2025 Scale: 1 : 5 Sheet: **ASRHC01**



External Corner Flashing



Internal Corner Flashing



Base Flashing



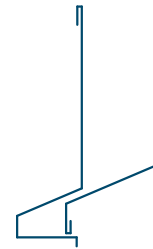
Soffit Flashing



Window Sill Flashing



Window Jamb Flashing



Window Head Flashing



Sill Flashing - Meterbox



Jamb Flashing - Meterbox



Head Flashing - Meterbox

Typical Flashings Details

Rev: 1 Eurotray Angle Seam Residential Horizontal Cladding

Under flashing to match roofing.
Materials & Fixings as per Dimond
Technical Data, E2/AS1 & MRM
Code of Practice

Barge flashing to match roofing.
Materials & Fixings as per
Dimond Technical Data, E2/AS1
& MRM Code of Practice

Prefinished scw with
neoprene washer

Vented cavity batten

Eurotray Angle Seam horizontal
fixed wall cladding profile

Vented wall underlay
separation layer over substrate

H3 CD Plywood substrate
or RAB board

Wall framing
(indicative only)

Wall underlay
(shown dashed)

Dimond Roofing Profile

Vented roof underlay

Vented cavity batten

Roof framing
(indicative only)

Z

COVER DIMENSIONS AS PER E2/AS1	Z
SITUATION 1 Low, Medium & High Wind Zones where roof pitch $\geq 10^\circ$ (Excludes any soft edge or turn-down)	50 MIN
SITUATION 2 All roof pitches in Very High zone. Low, Medium & High Wind Zones where roof pitch $\leq 10^\circ$ (Excludes any soft edge or turn-down)	70 MIN
SITUATION 3 All roof pitches in Extra High zone. (Excludes any soft edge or turn-down)	90 MIN

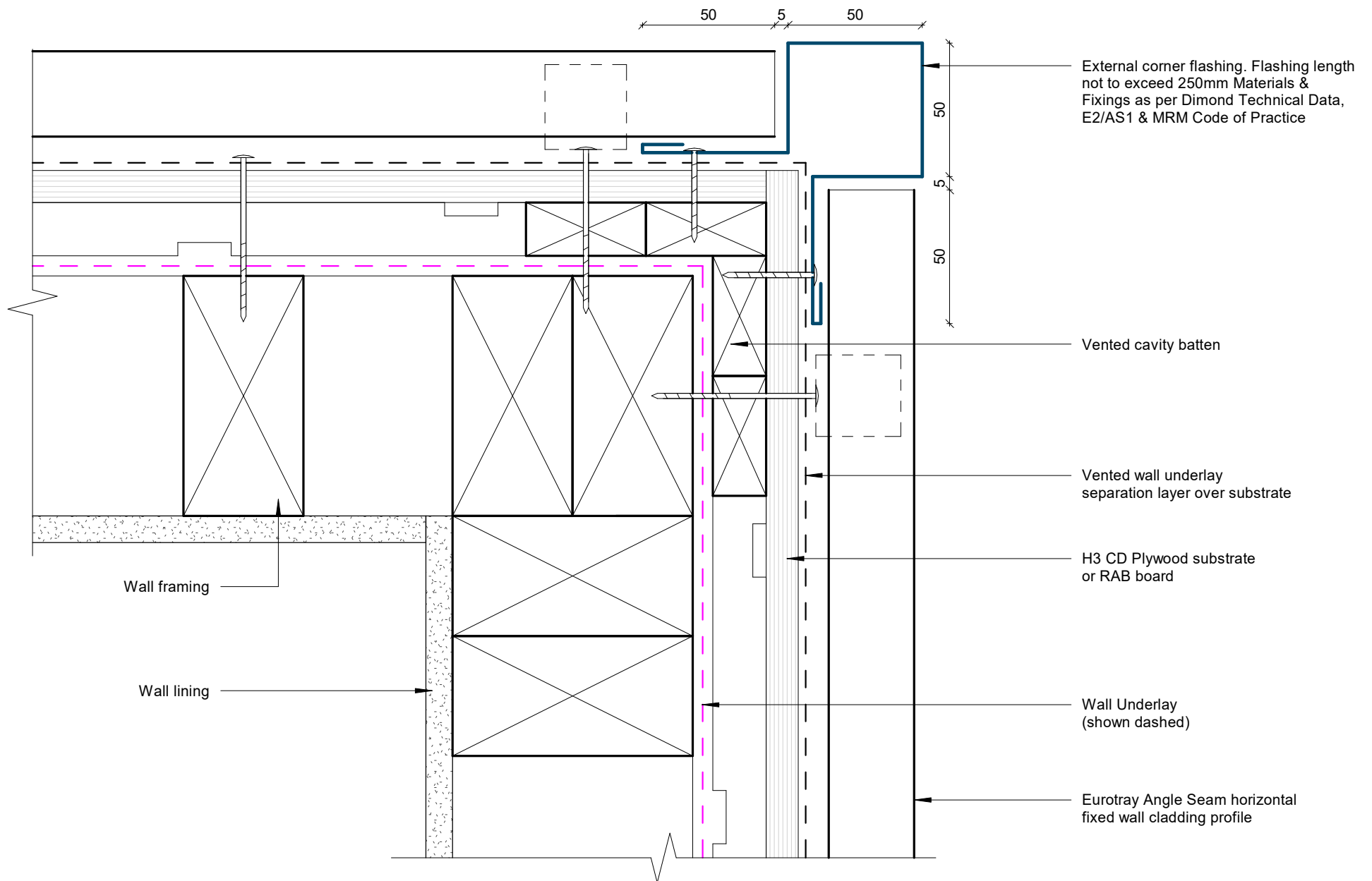
Barge Wall Detail

Rev: 1 Eurotray Angle Seam Residential Horizontal Cladding



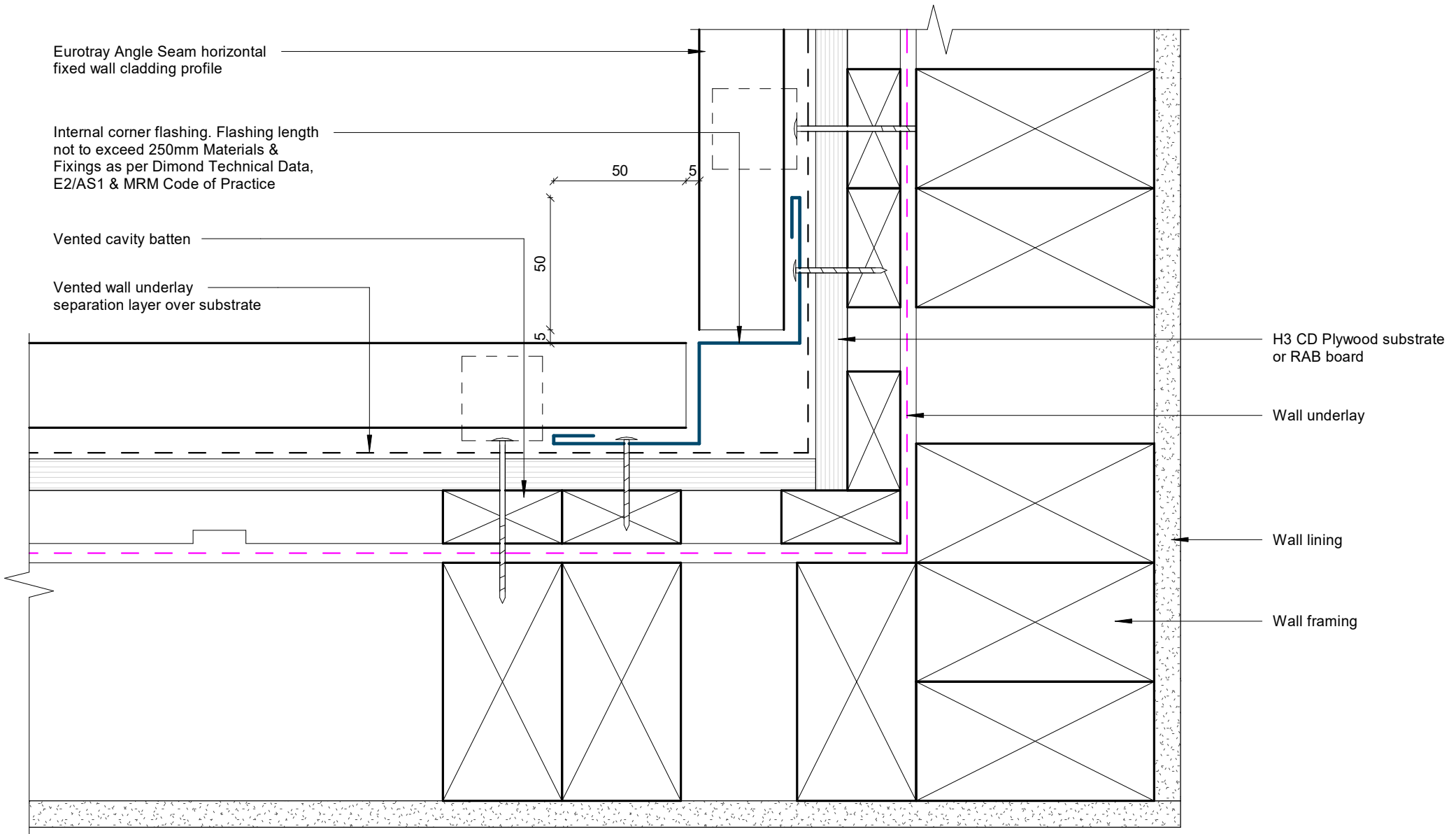
©Dimond 2023, all rights reserved. The information and specifications contained in this document are proprietary to Dimond and may not be used other than for the purpose of designing or building a roof or roofing system solely using products supplied or approved by Dimond ("Permitted Purpose"). You may copy this document solely for the Permitted Purpose, but may not otherwise copy, publish, distribute or modify this document without Dimond's prior written consent. Dimond will not be liable for any use of this document or information and specifications contained in this document, other than for the Permitted Purpose

Date: Sep 2025 Scale: 1 : 2 Sheet: ASRHC03



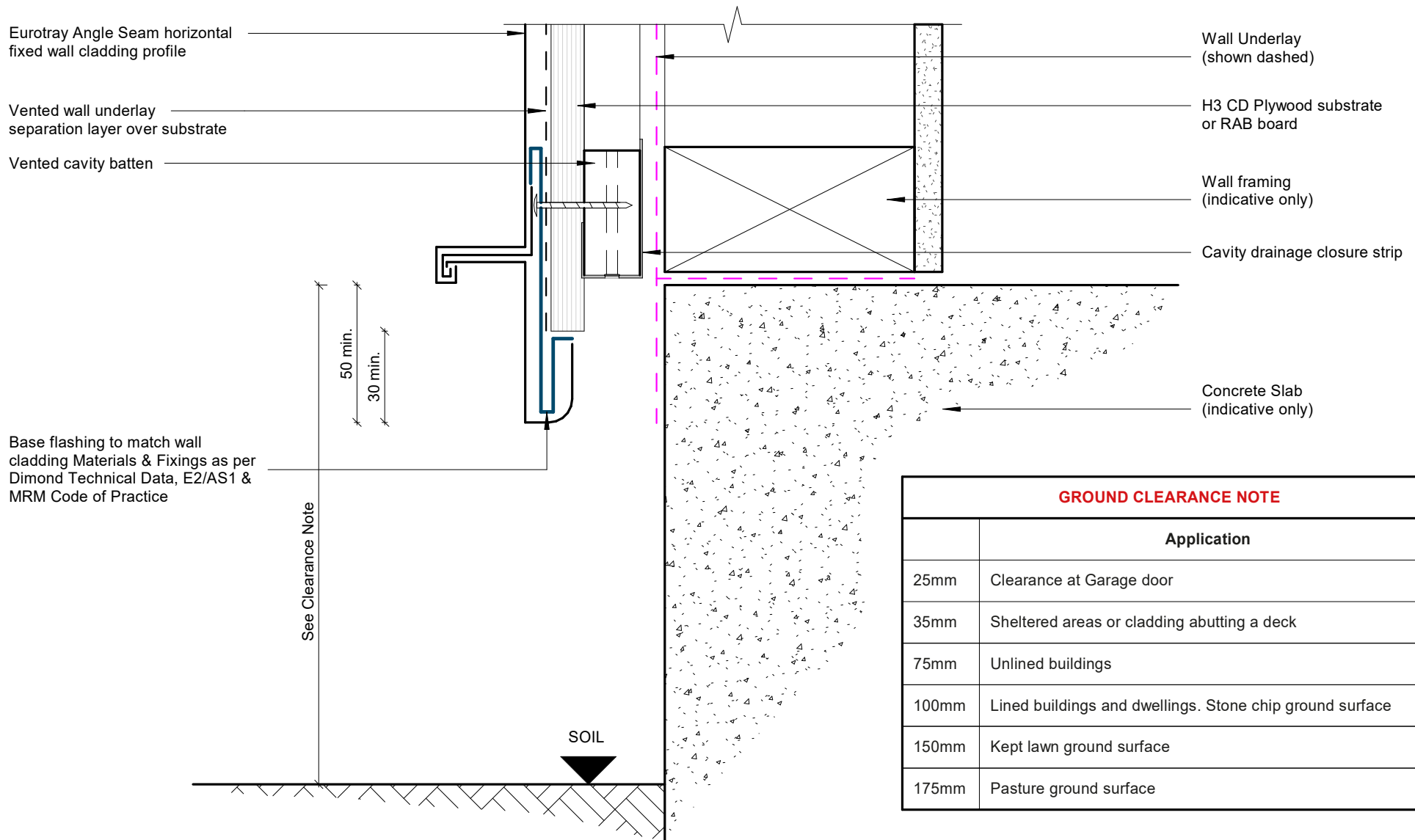
External Corner Detail

Rev: 1 Eurotray Angle Seam Residential Horizontal Cladding



Internal Corner Detail

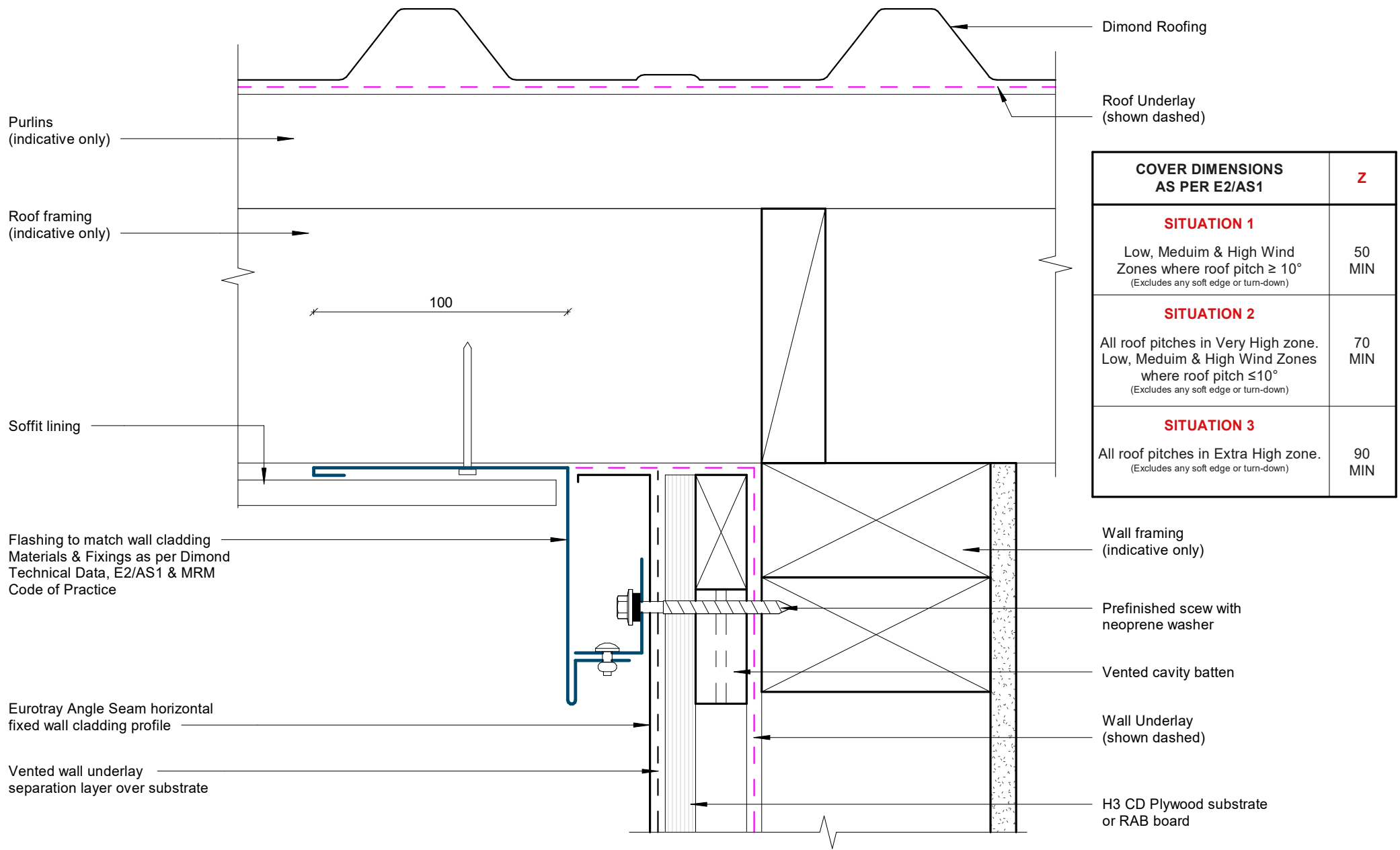
Rev: 1 Eurotray Angle Seam Residential Horizontal Cladding



GROUND CLEARANCE NOTE

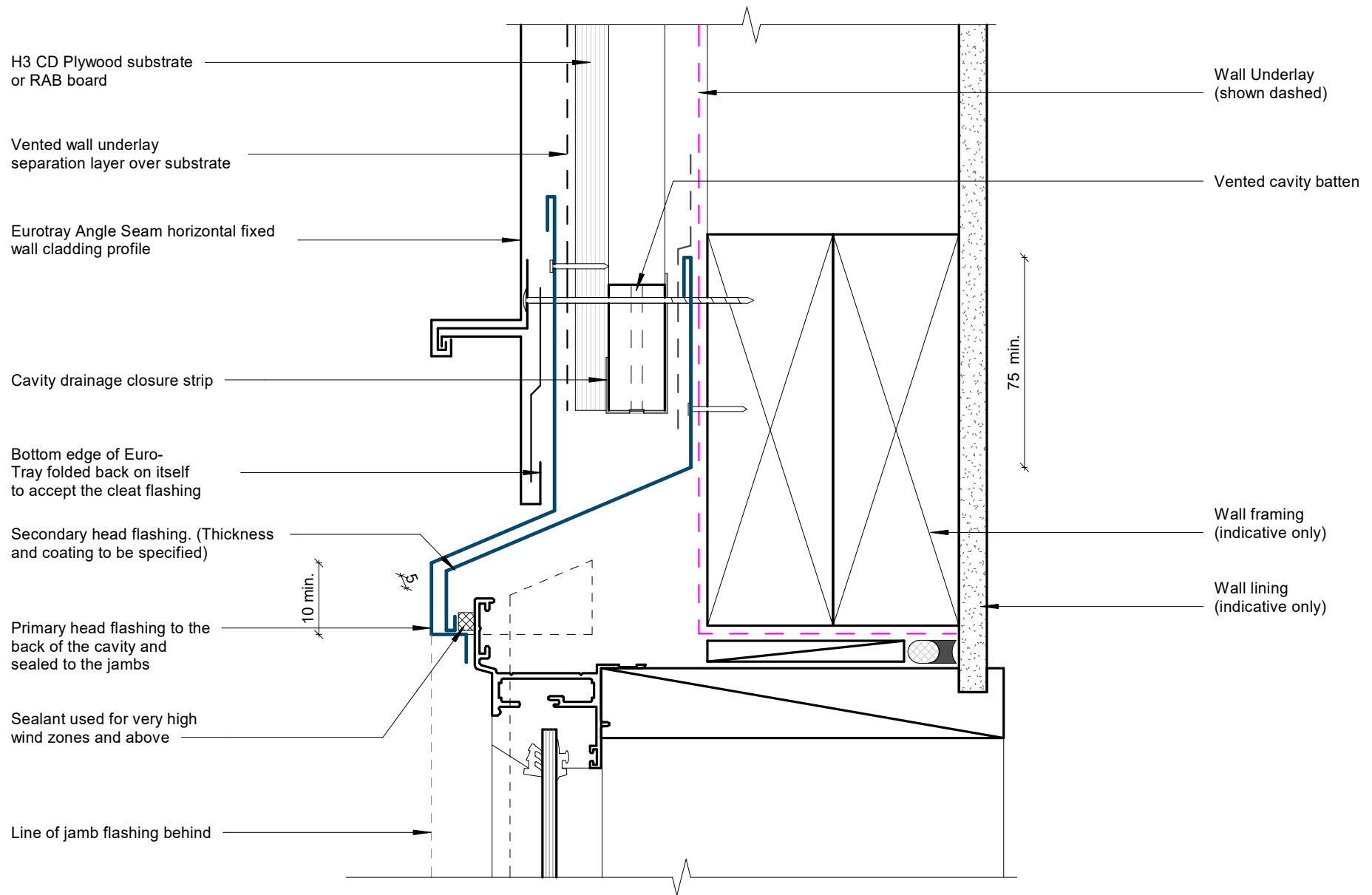
Application	
25mm	Clearance at Garage door
35mm	Sheltered areas or cladding abutting a deck
75mm	Unlined buildings
100mm	Lined buildings and dwellings. Stone chip ground surface
150mm	Kept lawn ground surface
175mm	Pasture ground surface

Base Detail



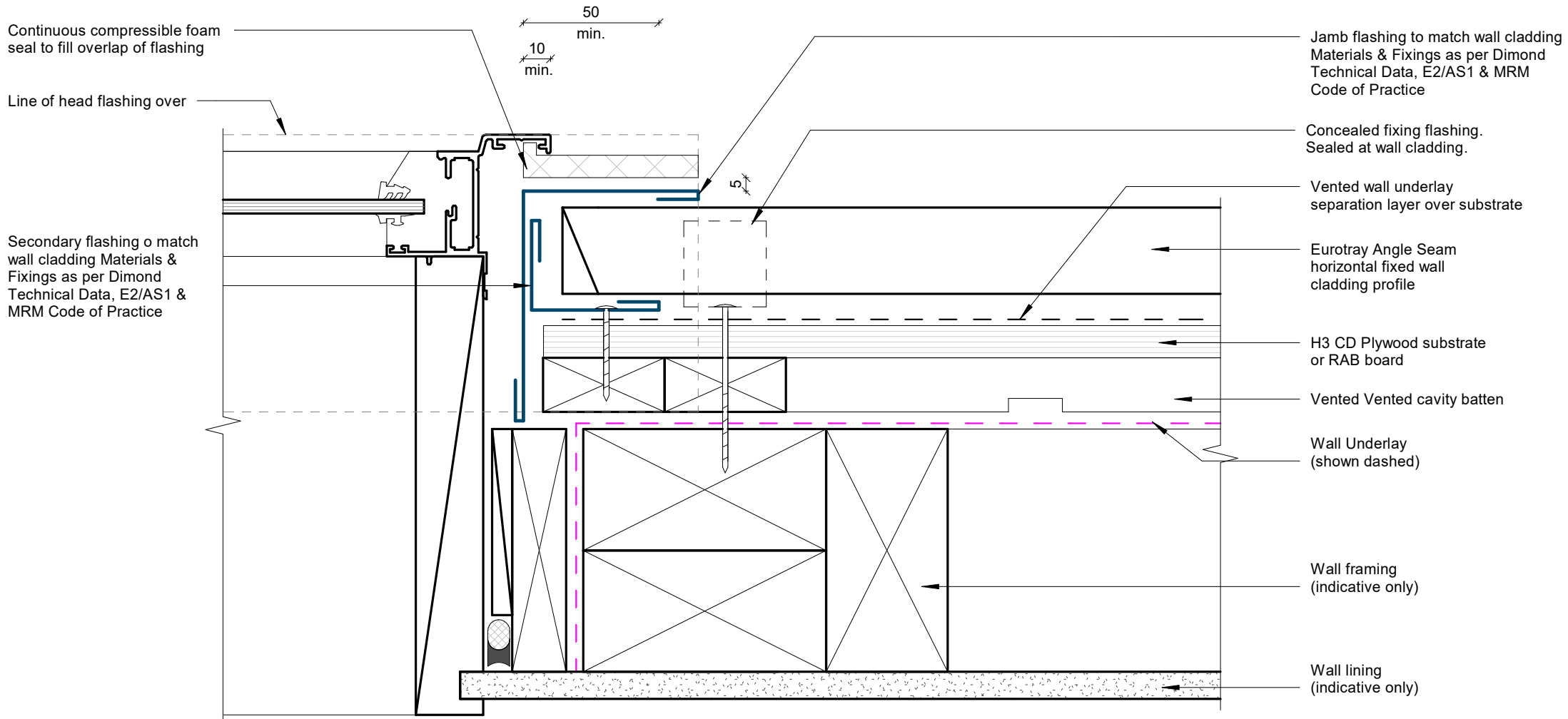
Soffit Detail

Rev: 1 Eurotray Angle Seam Residential Horizontal Cladding



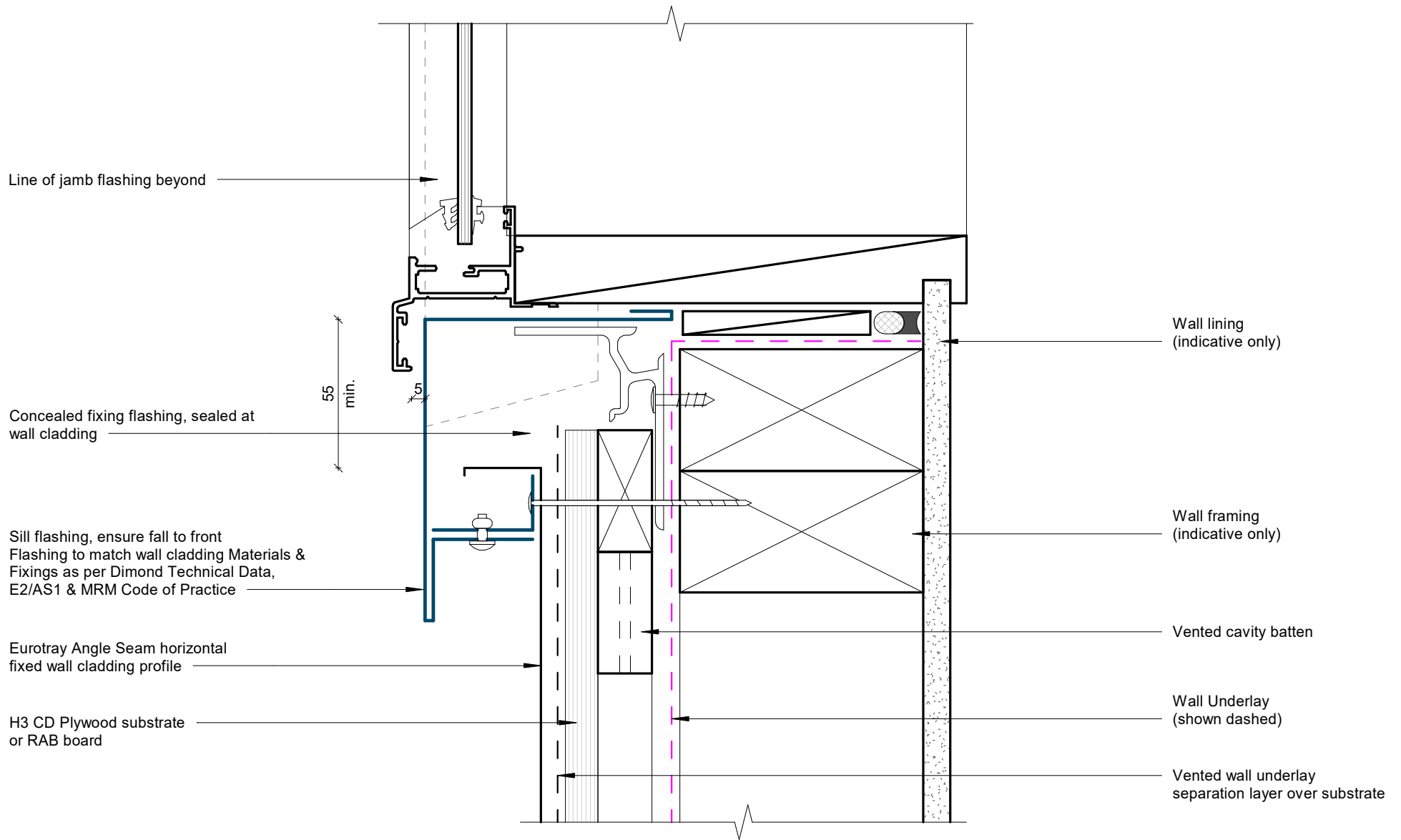
Flush Window Head Detail

Rev: 1 Eurotray Angle Seam Residential Horizontal Cladding



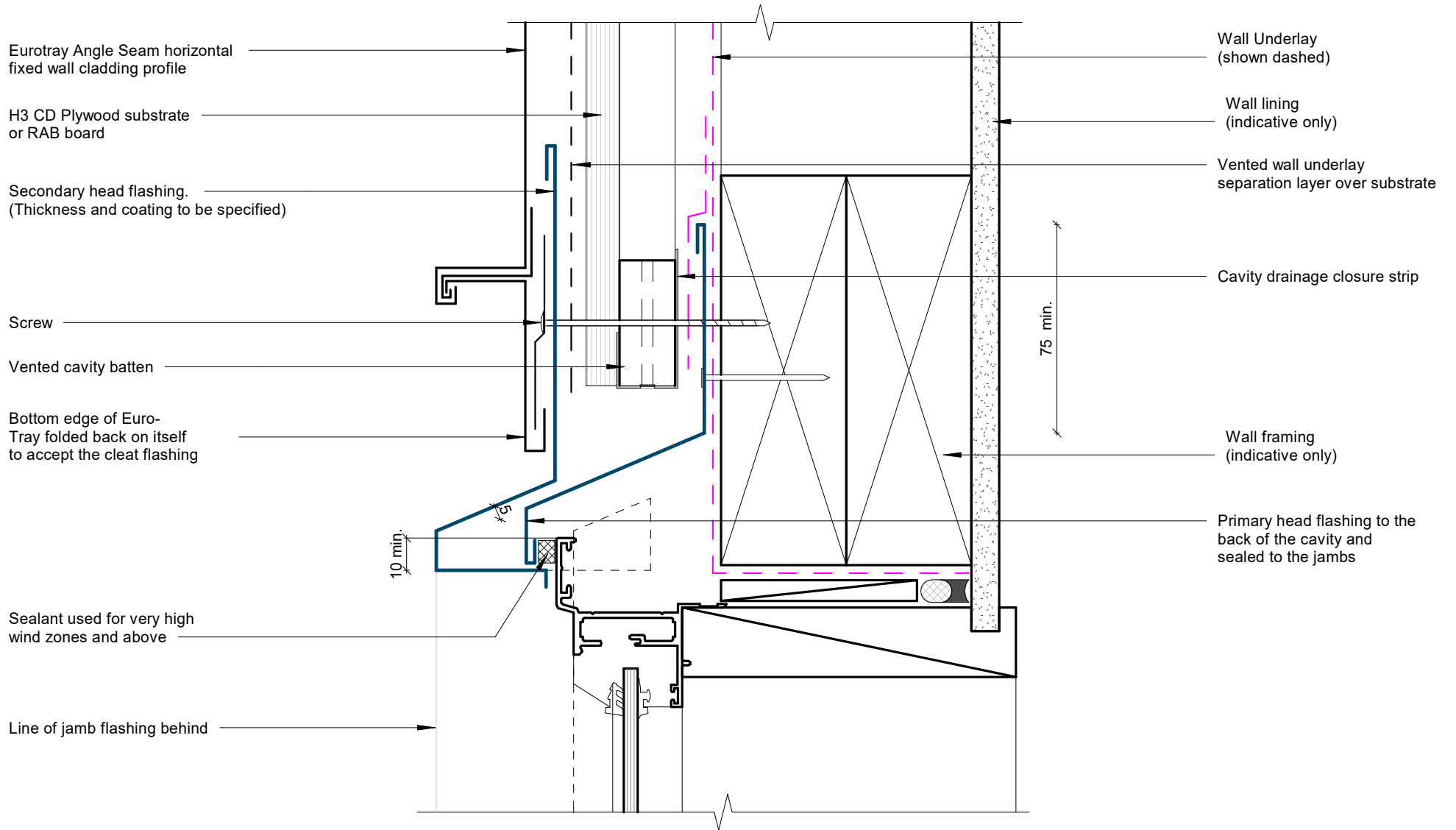
Flush Window Jamb Detail

Rev: 1 Eurotray Angle Seam Residential Horizontal Cladding



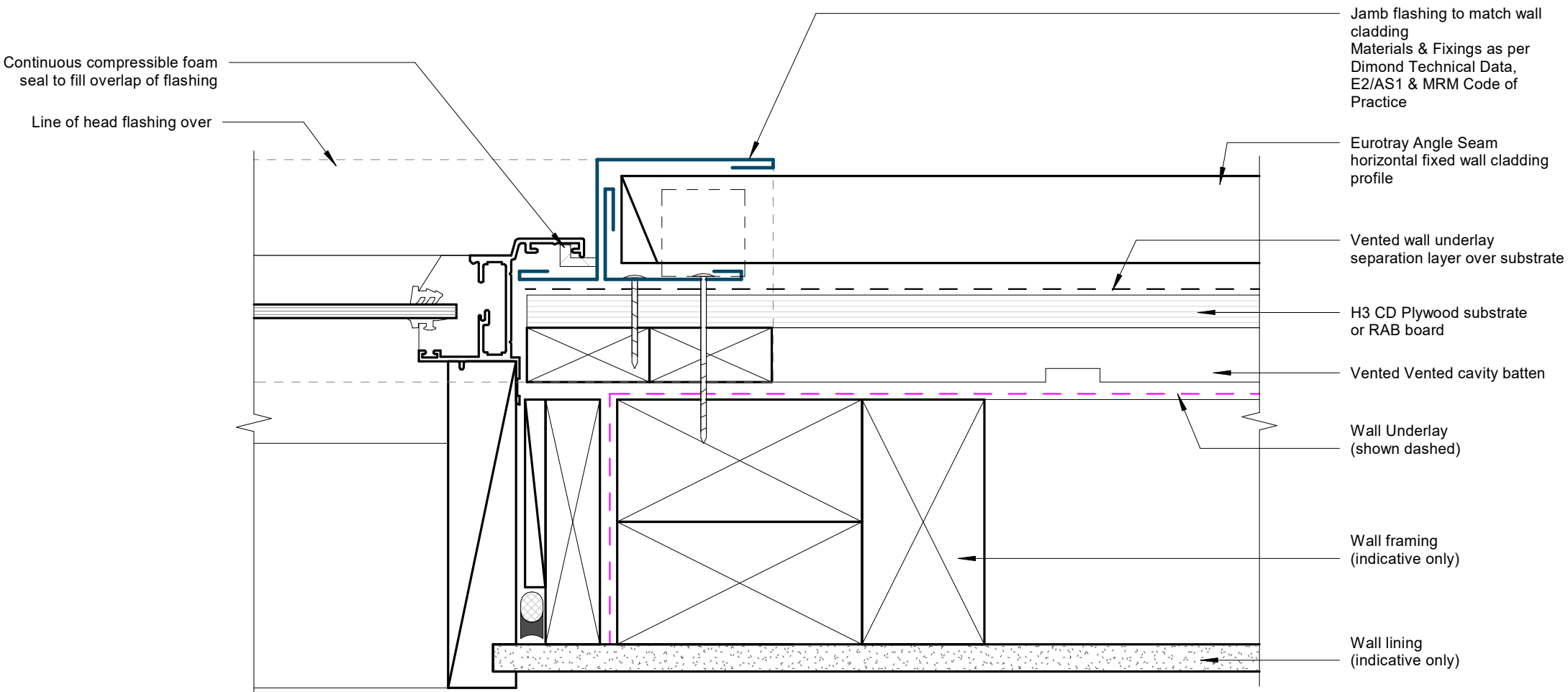
Flush Window Sill Detail

Rev: 1 Eurotray Angle Seam Residential Horizontal Cladding



Recessed Window/Door Head Detail

Rev: 1 Eurotray Angle Seam Residential Horizontal Cladding

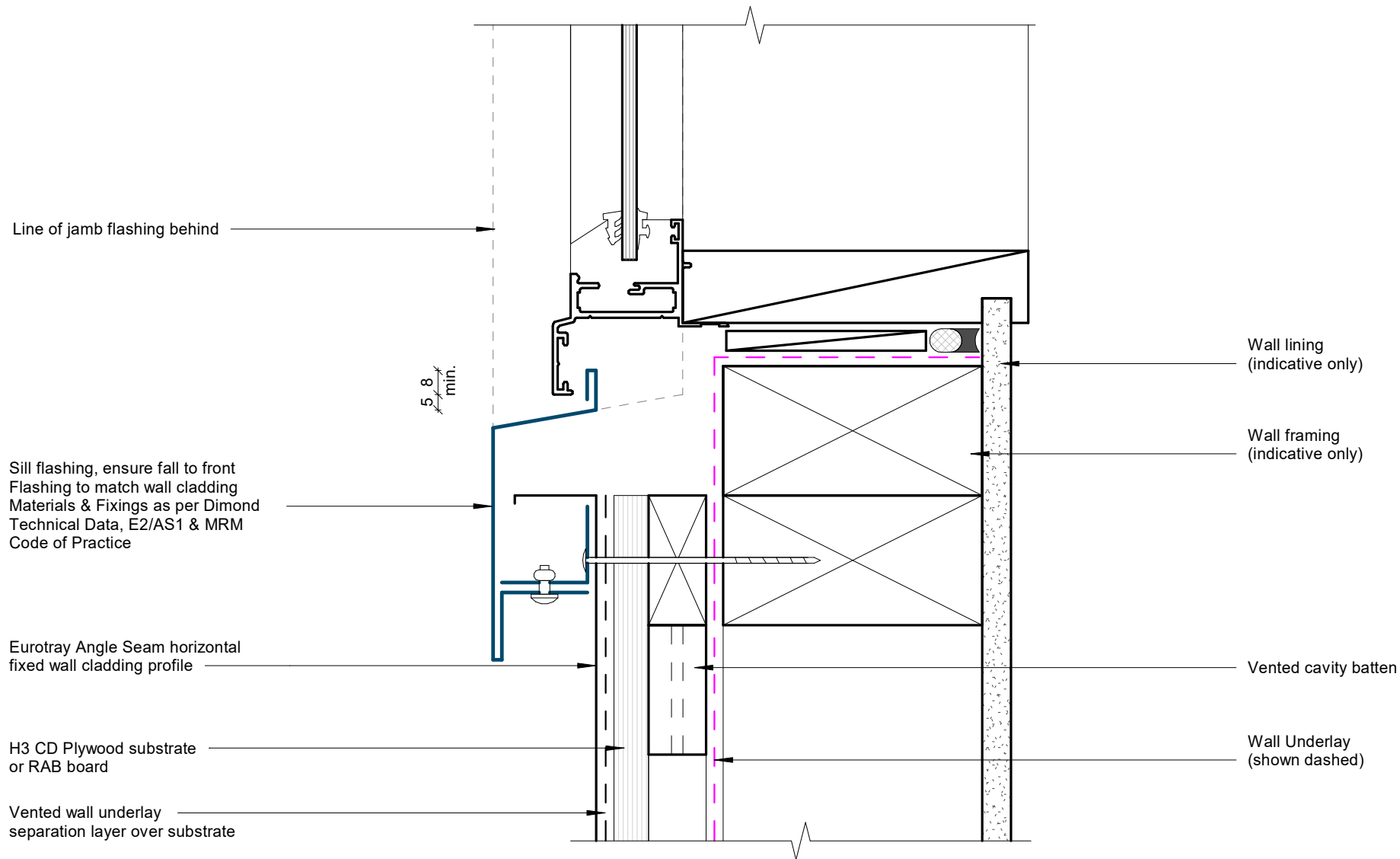


Recessed Window/Door Jamb Detail

Rev: 1 Eurotray Angle Seam Residential Horizontal Cladding

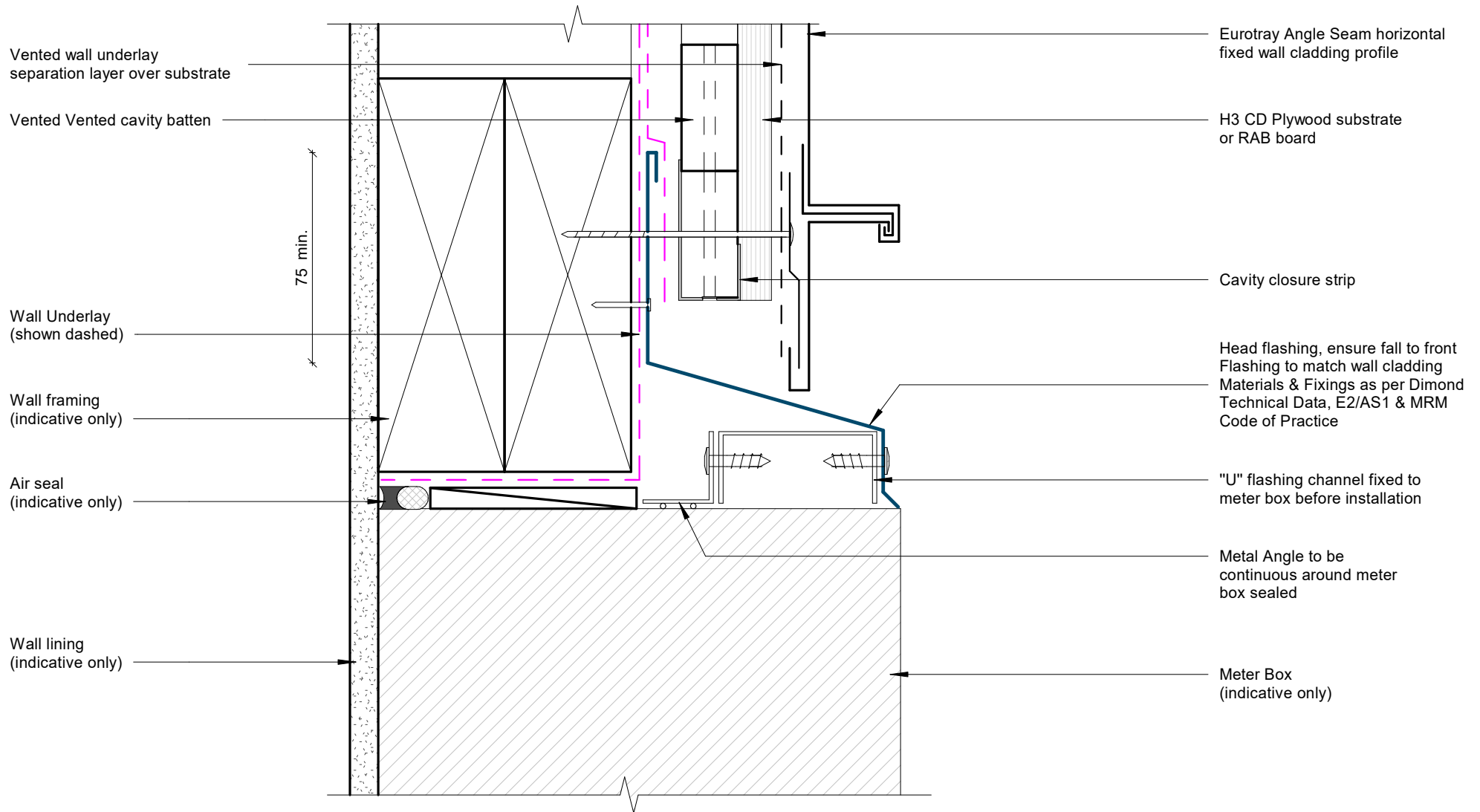


©Dimond 2023, all rights reserved. The information and specifications contained in this document are proprietary to Dimond and may not be used other than for the purpose of designing or building a roof or roofing system solely using products supplied or approved by Dimond ("Permitted Purpose"). You may copy this document solely for the Permitted Purpose, but may not otherwise copy, publish, distribute or modify this document without Dimond's prior written consent. Dimond will not be liable for any use of this document or information and specifications contained in this document, other than for the Permitted Purpose



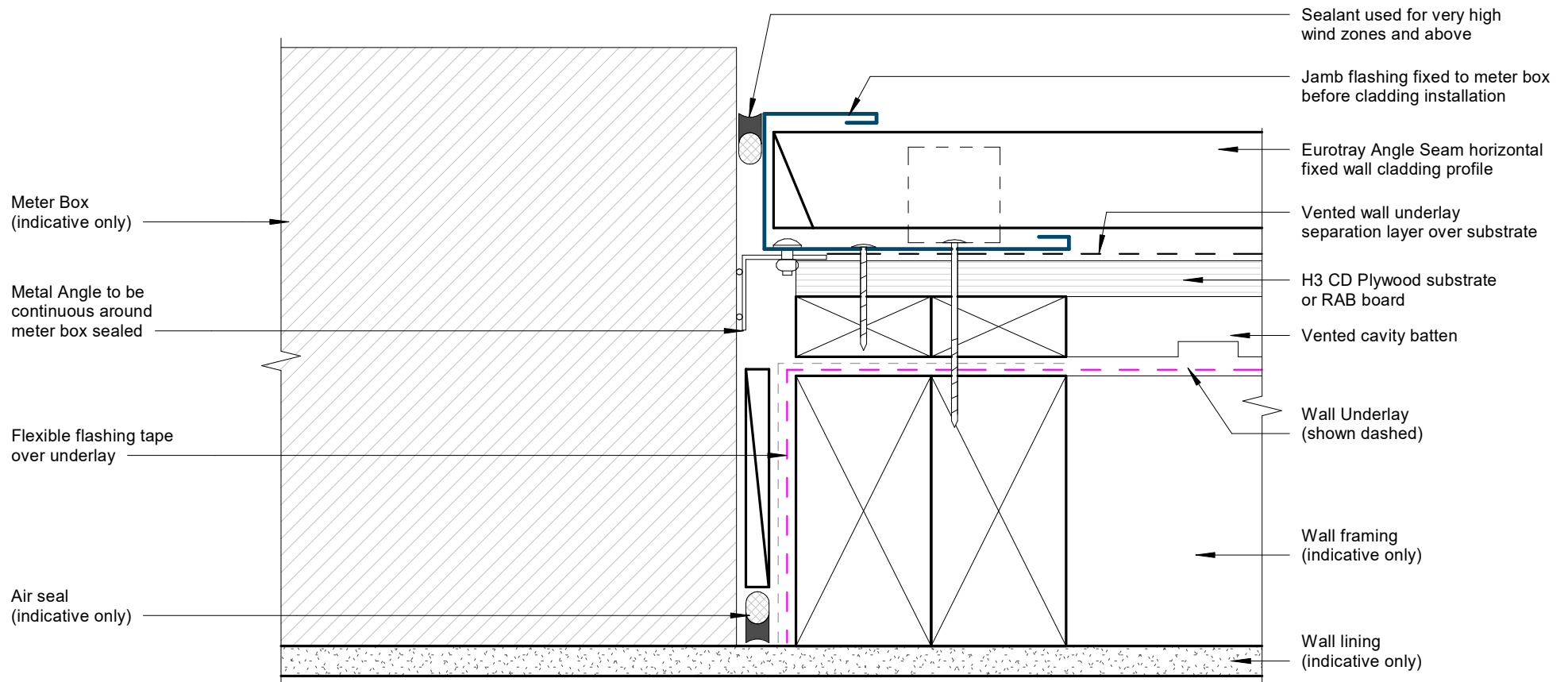
Recessed Window Sill Detail

Rev: 1 Eurotray Angle Seam Residential Horizontal Cladding



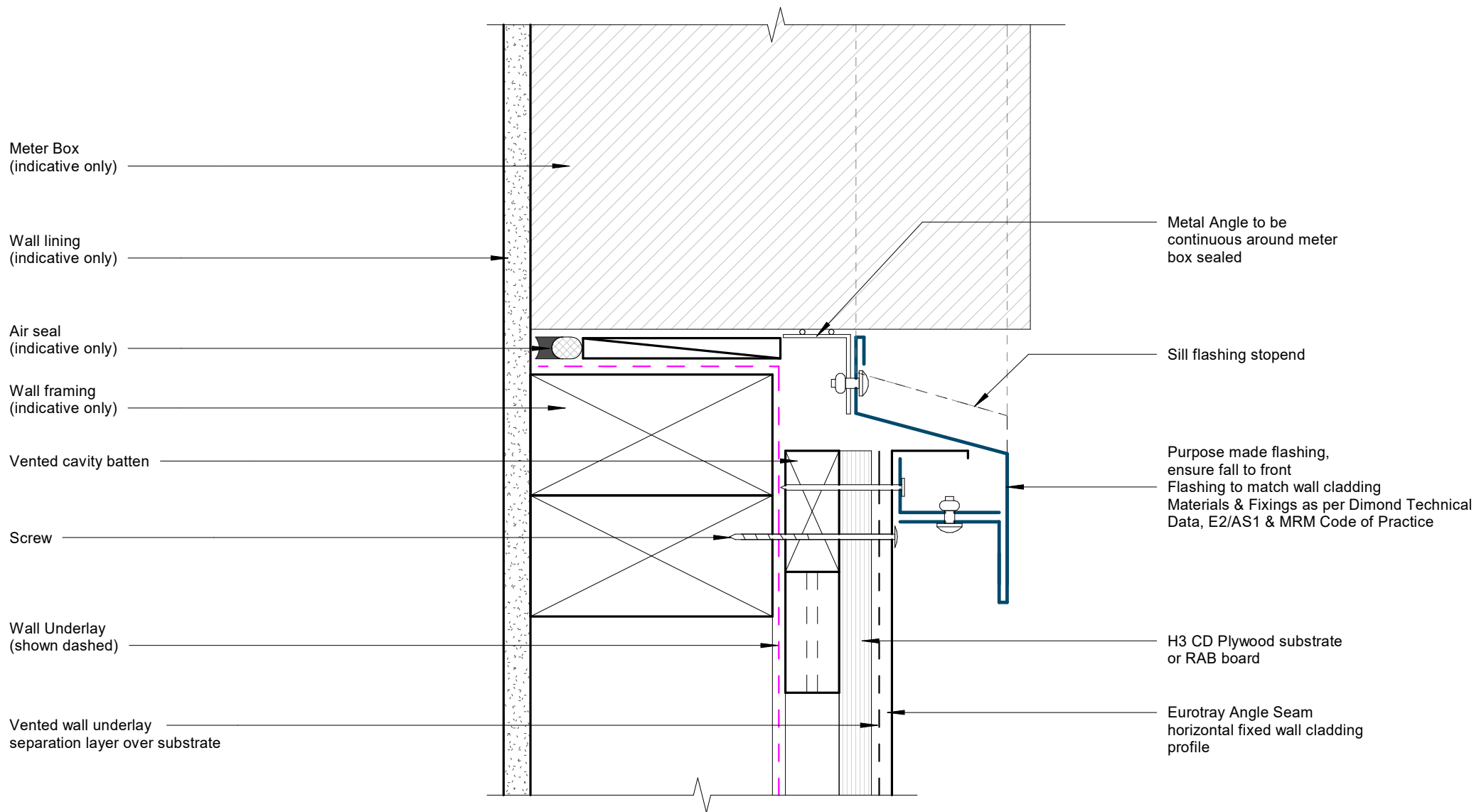
Meterbox Head Detail

Rev: 1 Eurotray Angle Seam Residential Horizontal Cladding



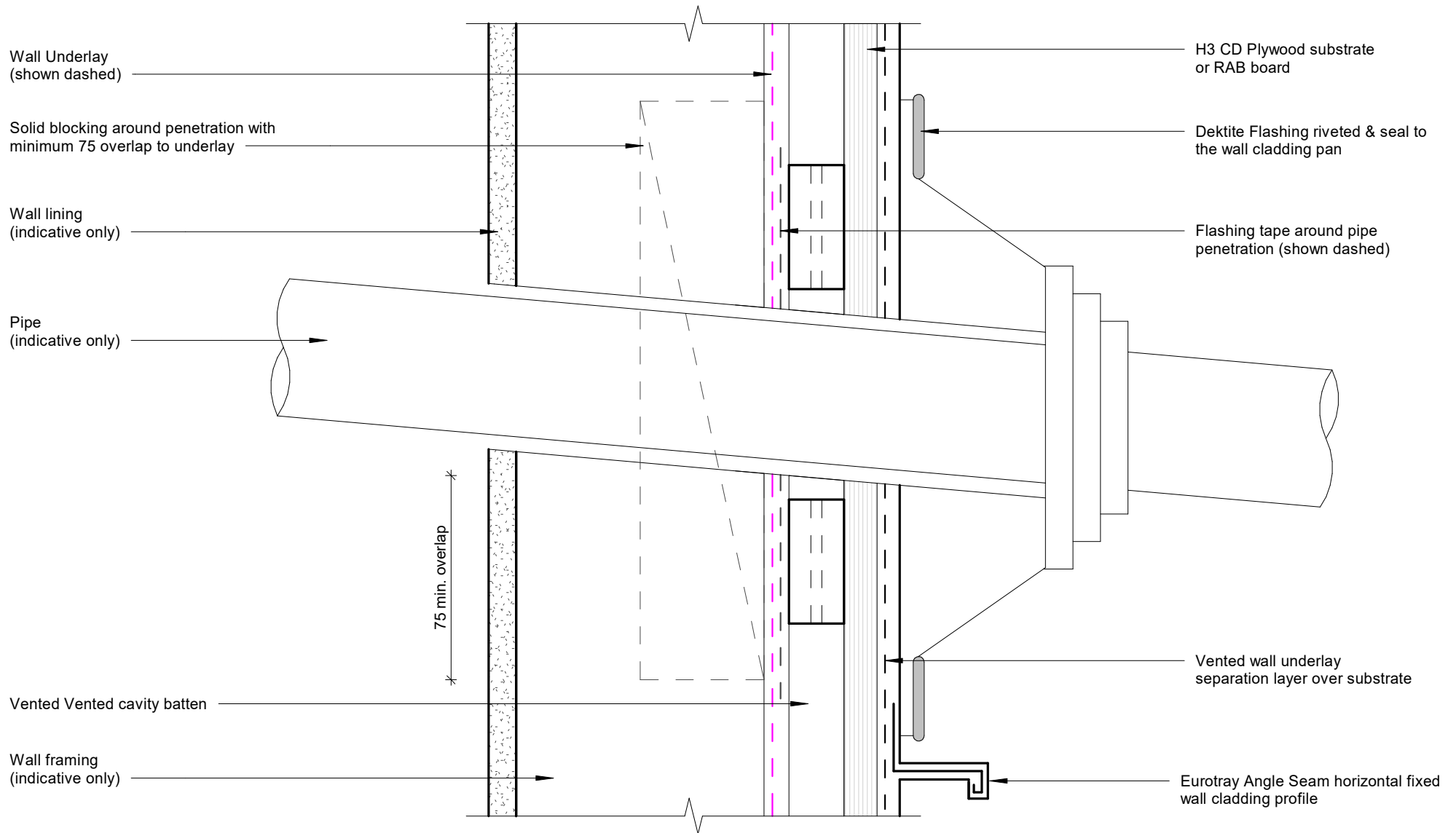
Meterbox Jamb Detail

Rev: 1 Eurotray Angle Seam Residential Horizontal Cladding



Meterbox Sill Detail

Rev: 1 Eurotray Angle Seam Residential Horizontal Cladding

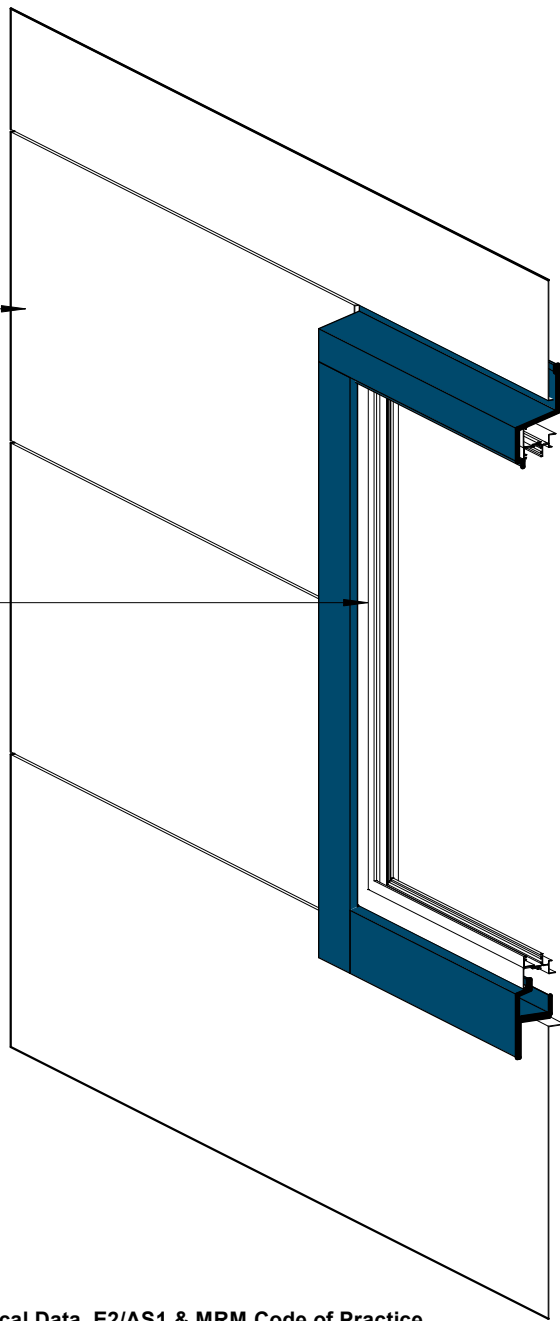


Pipe Penetration Detail

Rev: 1 Eurotray Angle Seam Residential Horizontal Cladding

Eurotray Angle Seam
horizontal fixed wall cladding

Aluminium joinery frame
(indicative only)



Pre finished head flashing
min 15° fall to top

Pre finished jamb flashing

Pre finished
secondary flashing

Pre finished sill flashing,
ensure fall to front

Flashing to match wall cladding
Materials & Fixings as per Dimond Technical Data, E2/AS1 & MRM Code of Practice

3D Window Flashing Detail

Rev: 1 Eurotray Angle Seam Residential Horizontal Cladding