

DIMONDEK 630

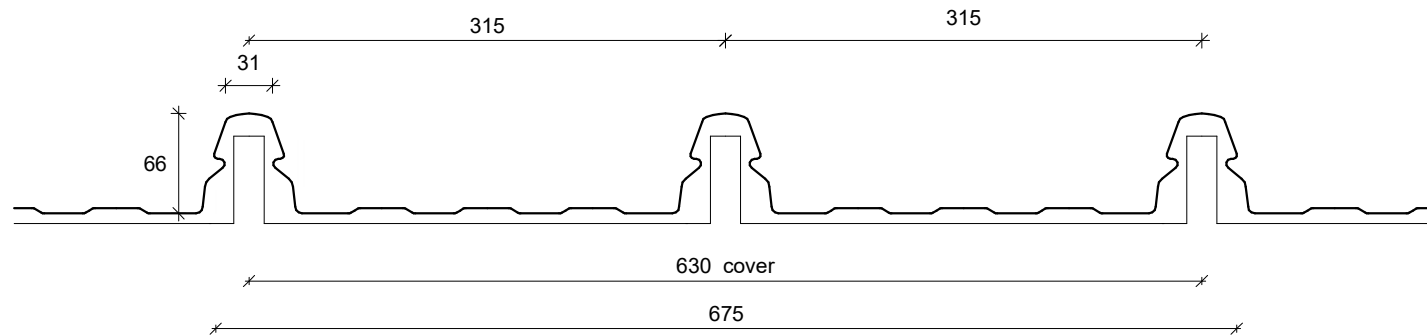
COMMERCIAL VERTICAL WALL CLADDING

DETAILS:

REV: DATE:

DD6CVC00	Cover Sheet	1	Sep 2025
DD6CVC01	Profile Summary	1	Sep 2025
DD6CVC02	Typical Flashing Detail	1	Sep 2025
DD6CVC03	Barge Detail	1	Sep 2025
DD6CVC04	Wall to Roof Transverse Detail	1	Sep 2025
DD6CVC05	Wall to Roof Detail	1	Sep 2025
DD6CVC06	Box Gutter Detail	1	Sep 2025
DD6CVC07	Wall to Roof Apex Detail	1	Sep 2025
DD6CVC08	External Corner Detail	1	Sep 2025
DD6CVC09	Internal Corner Detail	1	Sep 2025
DD6CVC10	Base Detail	1	Sep 2025
DD6CVC11	Window / Door Head Detail	1	Sep 2025
DD6CVC12	Window / Door Jamb Detail	1	Sep 2025
DD6CVC13	Window Sill Detail	1	Sep 2025

PROFILE OVERVIEW	
RIB TYPE	High
RIBS PER SHEET	3 Ribs per sheet
WIDTH	630mm Cover, 675mm Sheet



Profile Summary

Rev: 1 **Dimondek 630 Commercial Vertical Cladding**

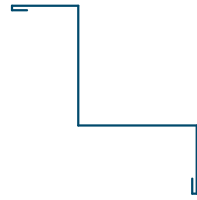


©Dimond 2023, all rights reserved. The information and specifications contained in this document are proprietary to Dimond and may not be used other than for the purpose of designing or building a roof or roofing system solely using products supplied or approved by Dimond ("Permitted Purpose"). You may copy this document solely for the Permitted Purpose, but may not otherwise copy, publish, distribute or modify this document without Dimond's prior written consent. Dimond will not be liable for any use of this document or information and specifications contained in this document, other than for the Permitted Purpose

Date: Sep 2025 Scale: 1 : 5 Sheet: **DD6CVC01**



**External Corner /
Barge Flashing**



Internal Corner Flashing



Base Flashing



Eaves Flashing



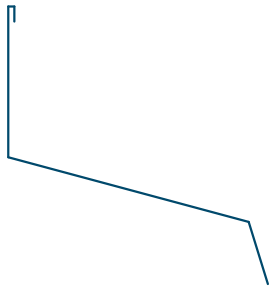
Window Sill Flashing



Window Head Flashing



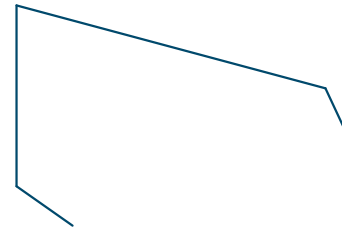
Window Jamb Flashing



Wall to Roof Flashing 1



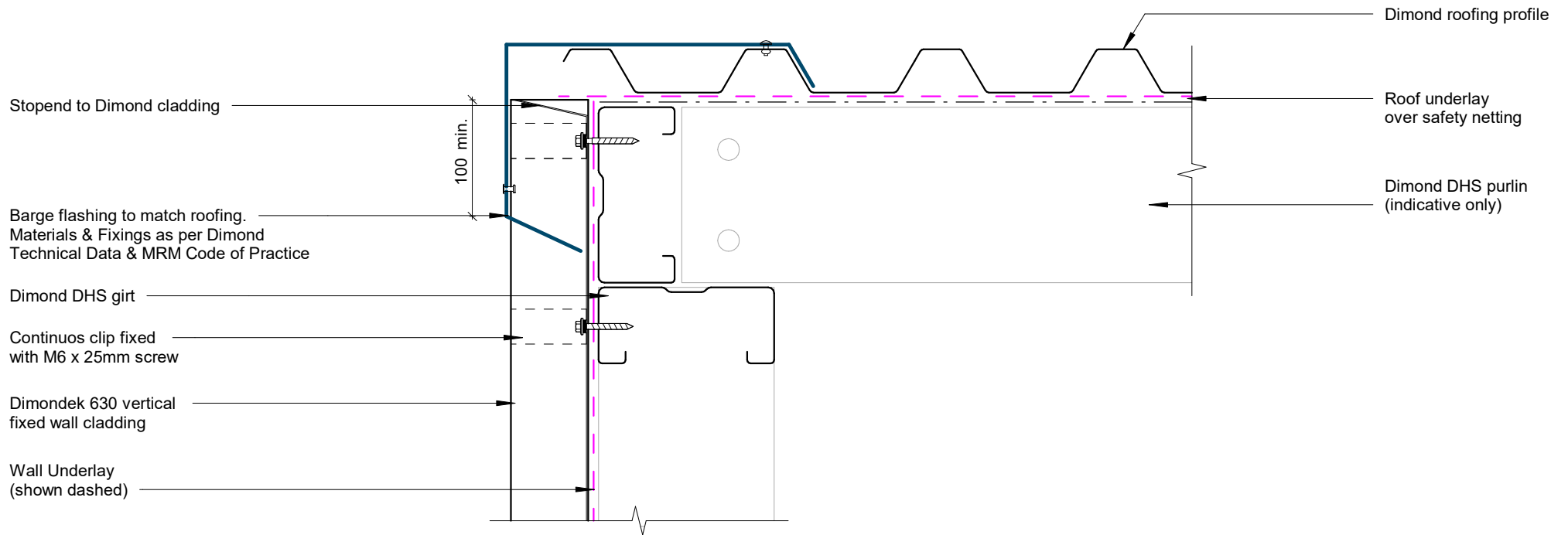
Wall to Roof Flashing 2



Wall Roof to Wall Apex Flashing

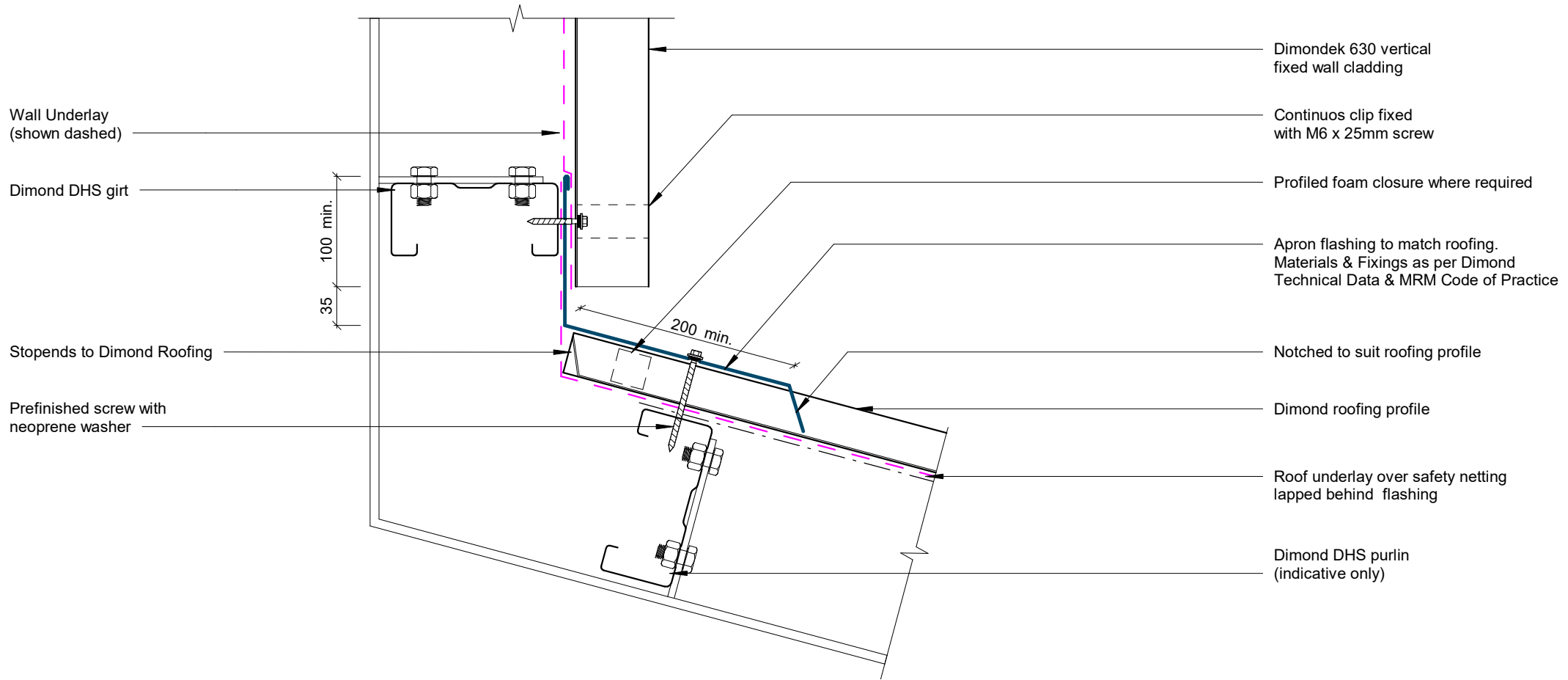
Typical Flashing Detail

Rev: 1 **Dimondek 630 Commercial Vertical Cladding**



Barge Detail

Rev: 1 Dimondek 630 Commercial Vertical Cladding

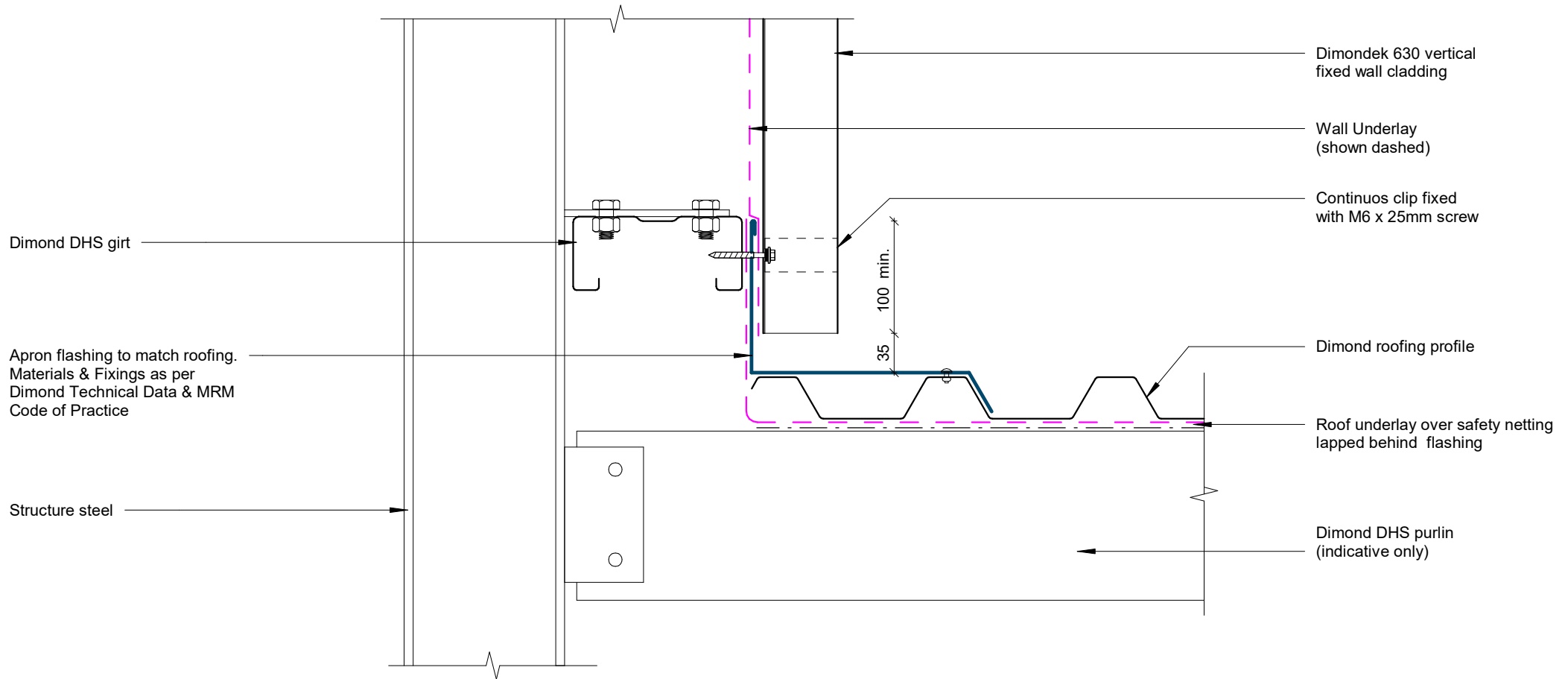


GENERAL NOTE

Foam closure strip required if bird or vermin proofing is required, or if in high wind area, where there is a risk of windblown moisture entering the building.

Wall to Roof Transverse Detail

Rev: 1 Dimondek 630 Commercial Vertical Cladding

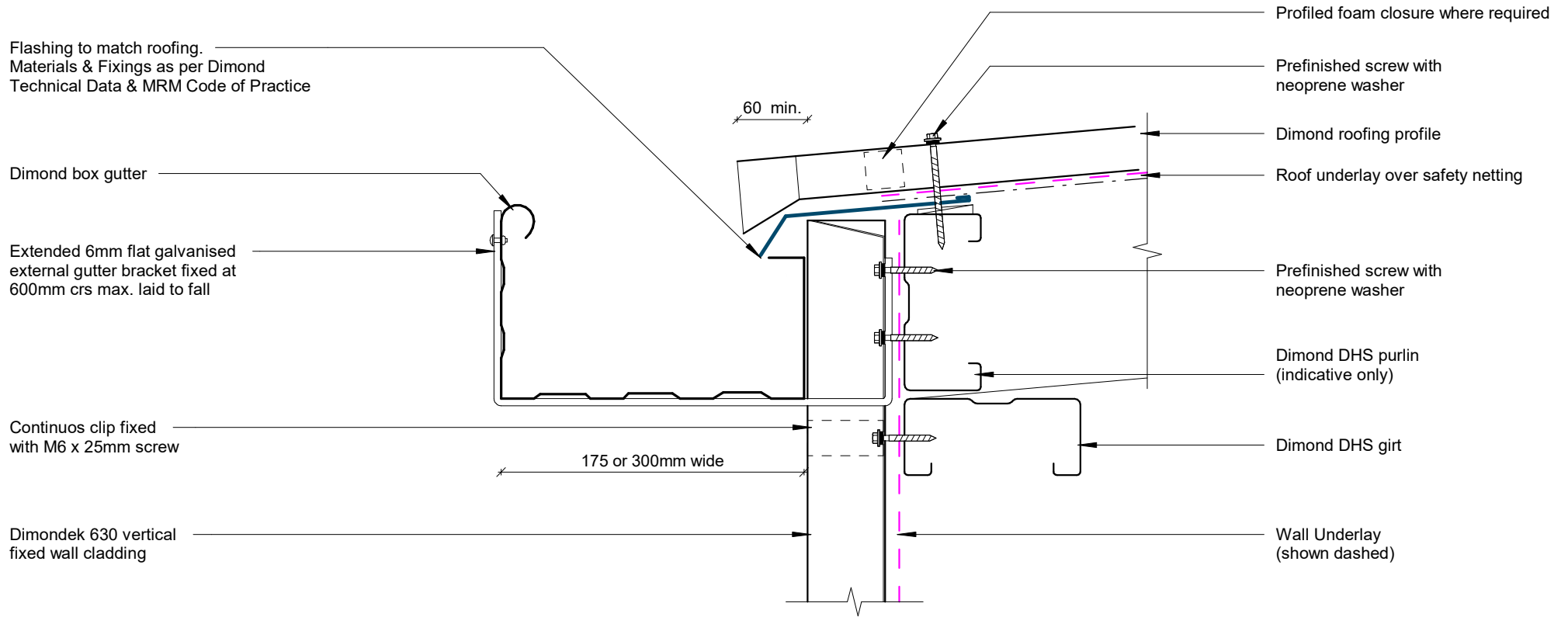


GENERAL NOTE

Foam closure strip required if bird or vermin proofing is required, or if in high wind area, where there is a risk of windblown moisture entering the building.

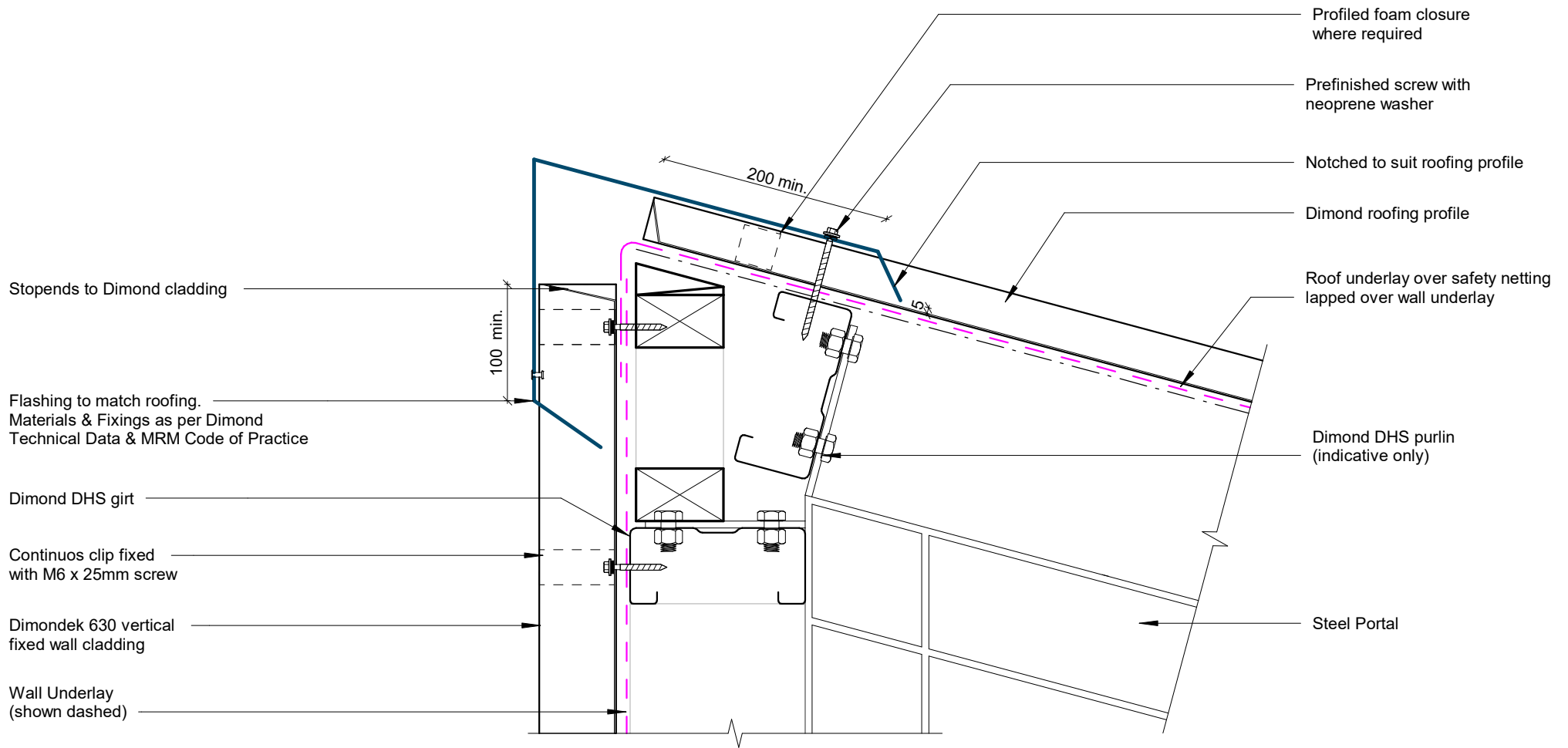
Wall to Roof Detail

Rev: 1 **Dimondek 630 Commercial Vertical Cladding**



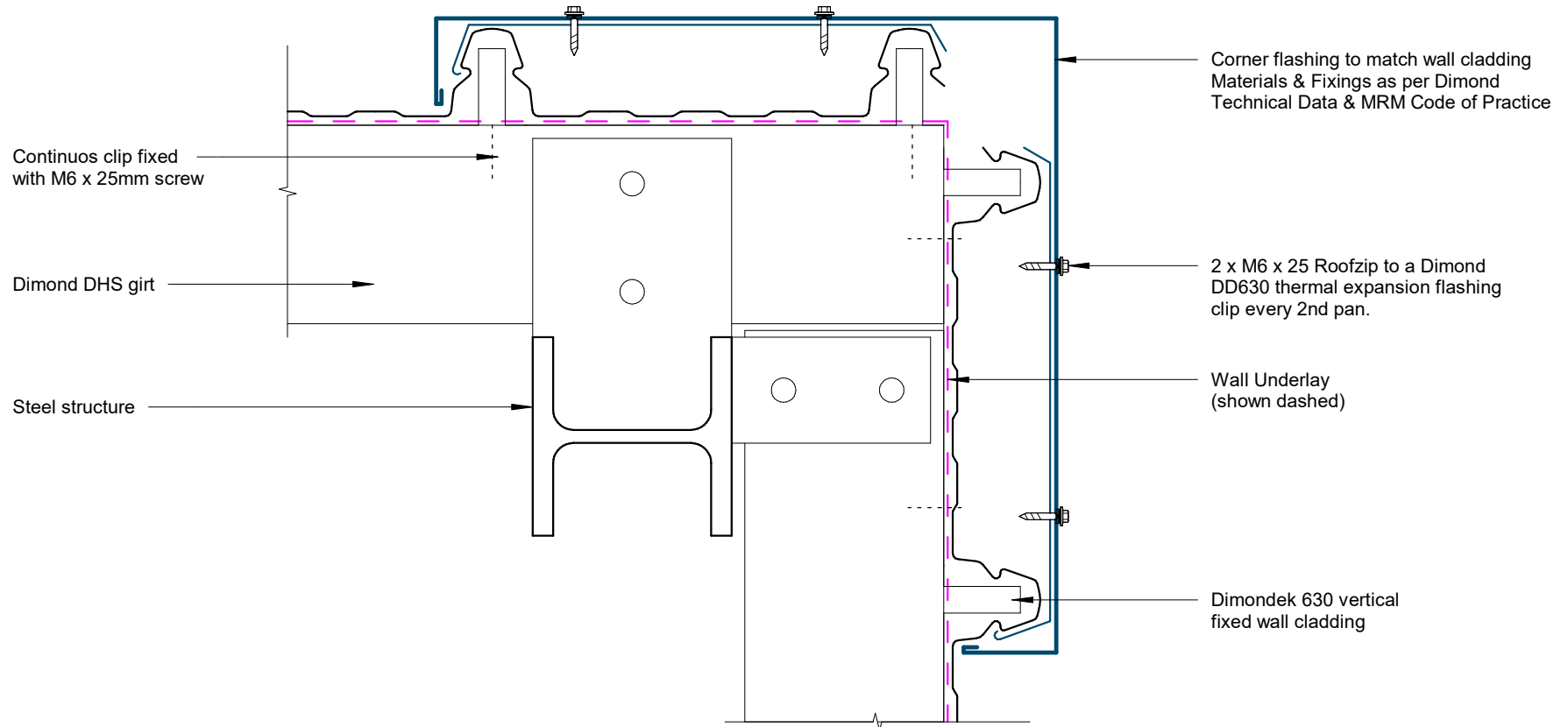
Box Gutter Detail

Rev: 1 Dimondek 630 Commercial Vertical Cladding



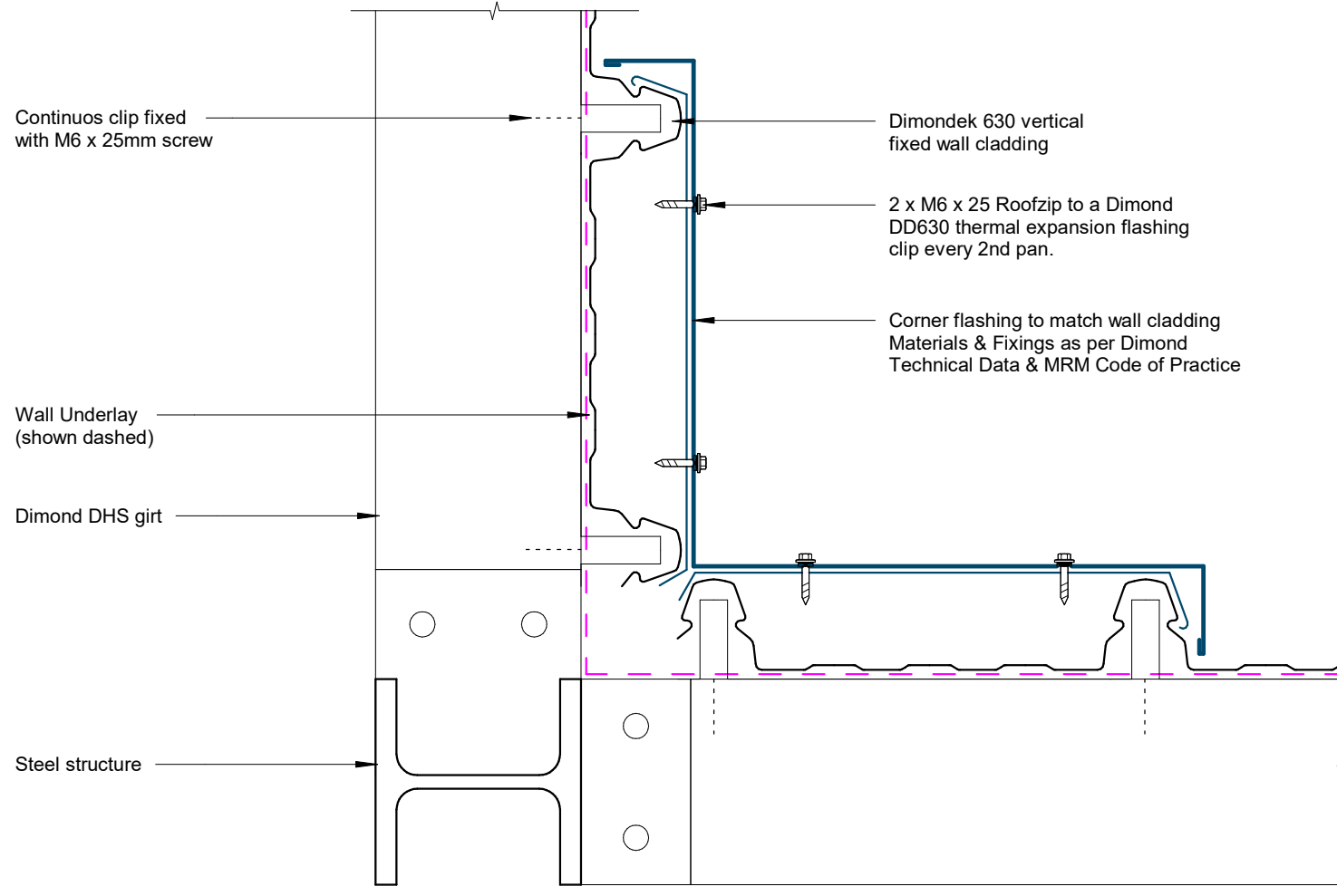
Wall to Roof Apex Detail

Rev: 1 Dimondek 630 Commercial Vertical Cladding



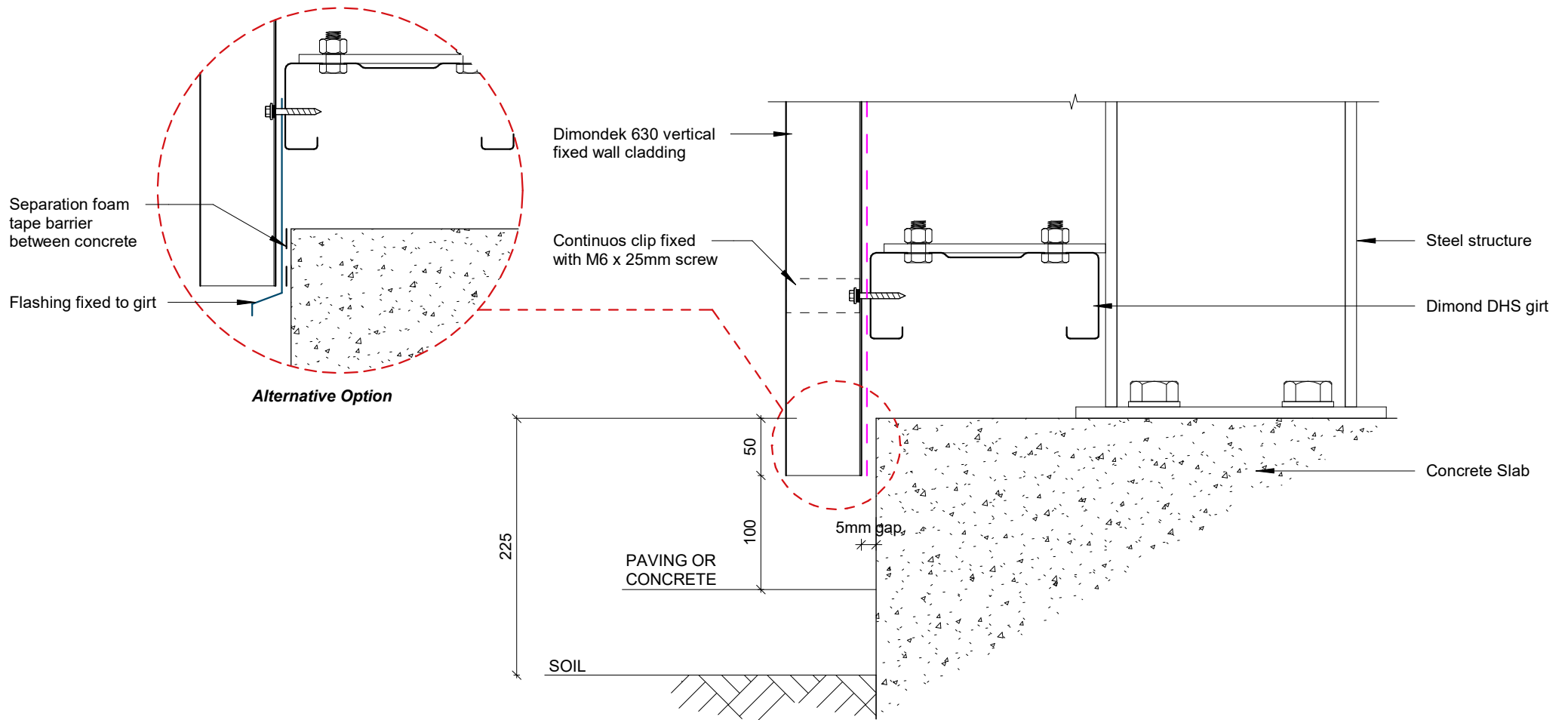
External Corner Detail

Rev: 1 Dimondek 630 Commercial Vertical Cladding



Internal Corner Detail

Rev: 1 Dimondek 630 Commercial Vertical Cladding



GENERAL NOTE

Foam closure strip required if bird or vermin proofing is required, or if in high wind area, where there is a risk of windblown moisture entering the building.

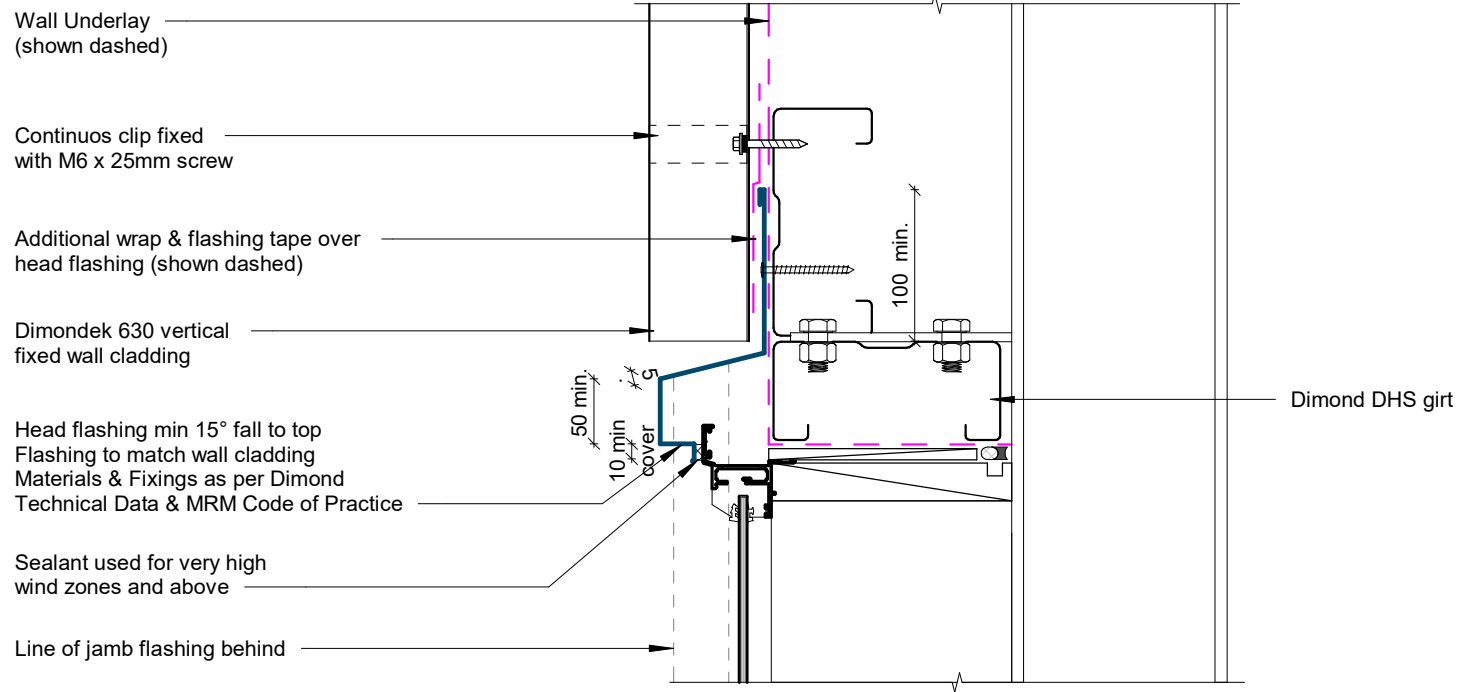
Base Detail

Rev: 1 **Dimondek 630 Commercial Vertical Cladding**



©Dimond 2023, all rights reserved. The information and specifications contained in this document are proprietary to Dimond and may not be used other than for the purpose of designing or building a roof or roofing system solely using products supplied or approved by Dimond ("Permitted Purpose"). You may copy this document solely for the Permitted Purpose, but may not otherwise copy, publish, distribute or modify this document without Dimond's prior written consent. Dimond will not be liable for any use of this document or information and specifications contained in this document, other than for the Permitted Purpose

Date: Sep 2025 Scale: 1 : 5 Sheet: **DD6CVC10**



GENERAL NOTE

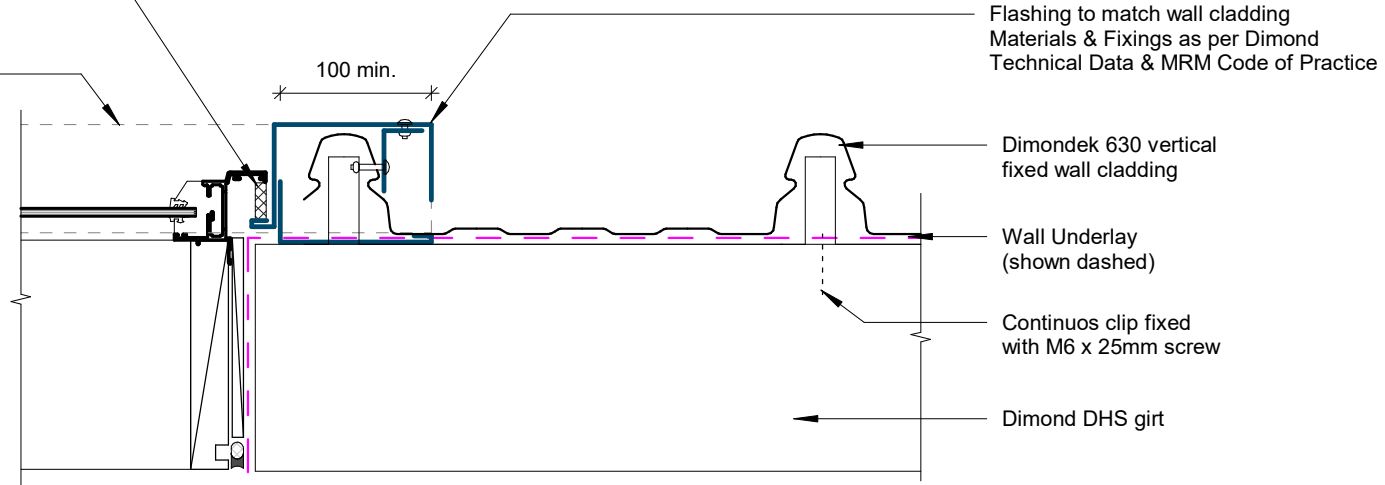
Foam closure strip required if bird or vermin proofing is required, or if in high wind area, where there is a risk of windblown moisture entering the building.

Window / Door Head Detail

Rev: 1 **Dimondek 630 Commercial Vertical Cladding**

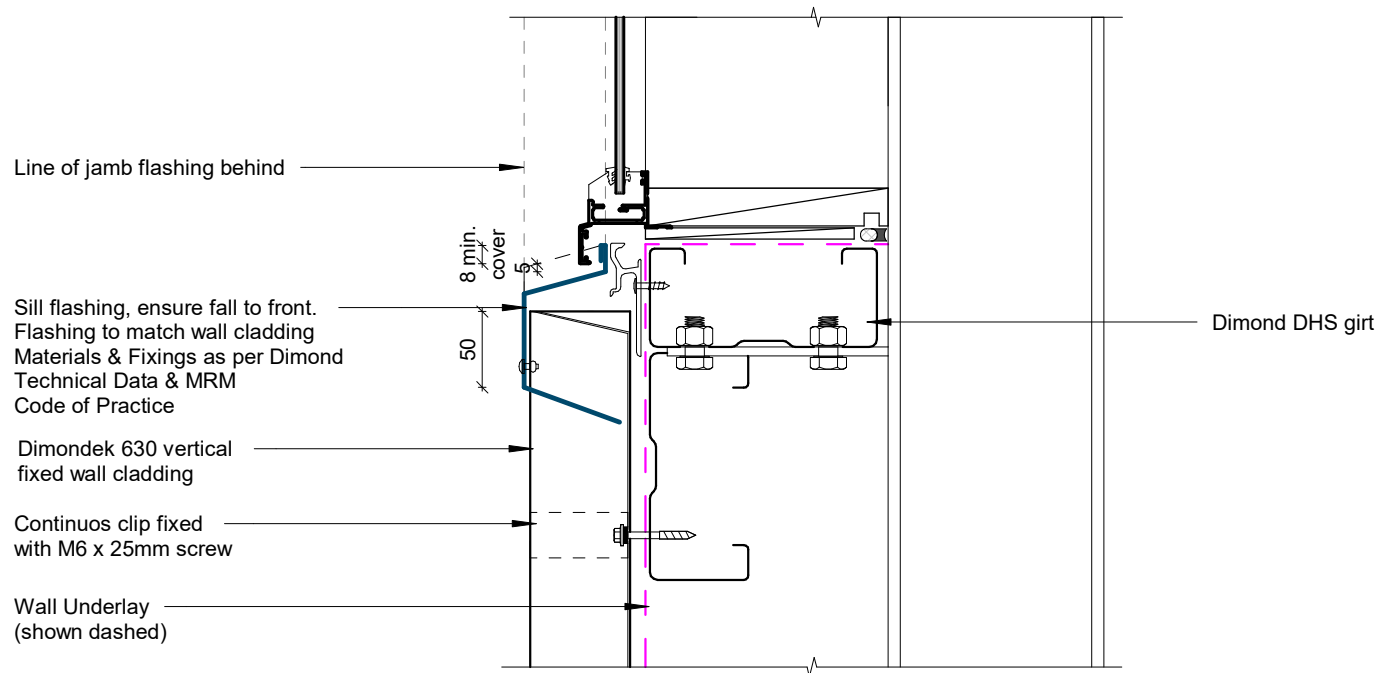
Sealant used for very high wind zones and above

Line of head flashing over



Window / Door Jamb Detail

Rev: 1 Dimondek 630 Commercial Vertical Cladding



Window Sill Detail

Rev: 1 Dimondek 630 Commercial Vertical Cladding