

DIMONDEK 400

RESIDENTIAL VERTICAL WALL CLADDING

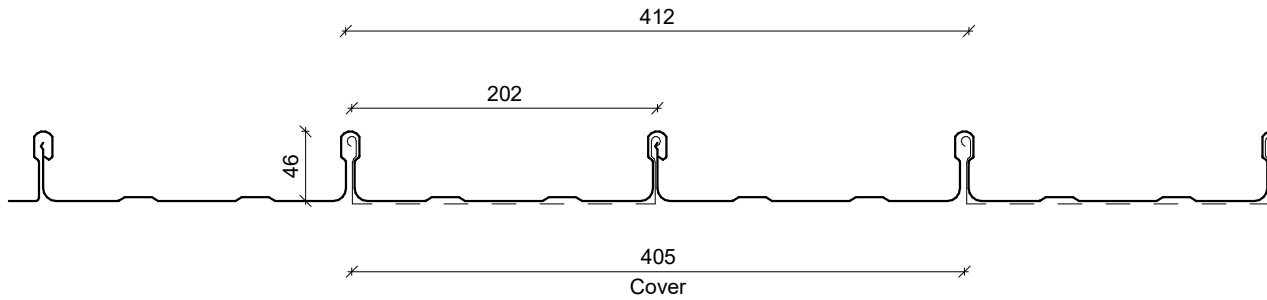
DETAILS:

REV:

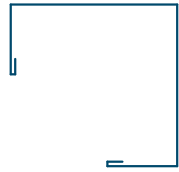
DATE:

DDVC00	Cover Sheet	1	Sep 2025
DDVC01	Profile Summary	1	Sep 2025
DDVC02	Typical Flashing Detail	1	Sep 2025
DDVC03	Barge Flashing Detail	1	Sep 2025
DDVC04	Transverse Junction Detail	1	Sep 2025
DDVC05	External Corner Detail	1	Sep 2025
DDVC06	Internal Corner Detail	1	Sep 2025
DDVC07	Base Detail	1	Sep 2025
DDVC08	Soffit Detail	1	Sep 2025
DDVC09	Window Head Detail	1	Sep 2025
DDVC10	Window Jamb Detail	1	Sep 2025
DDVC11	Window Sill Detail	1	Sep 2025
DDVC12	Meterbox Head Detail	1	Sep 2025
DDVC13	Meterbox Jamb Detail	1	Sep 2025
DDVC14	Meterbox Sill Detail	1	Sep 2025
DDVC15	Pipe Penetration Detail	1	Sep 2025
DDVC16	Cladding to Concrete Junction Detail	1	Sep 2025
DDVC17	Cladding to Brick Junction Detail	1	Sep 2025
DDVC18	Cladding to Panel Junction Detail	1	Sep 2025
DDVC19	3D Window Flashing Detail	1	Sep 2025

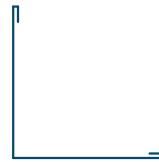
PROFILE OVERVIEW	
MINIMUM PITCH	3°
RIB TYPE	Concealed Clip
RIBS PER SHEET	3 Ribs per sheet
WIDTH	405mm cover, 412mm sheet



Profile Summary



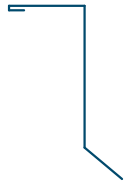
External Corner Flashing



Internal Corner Flashing



Base Flashing



Soffit Flashing



Window Head Flashing



Window Jamb Flashing

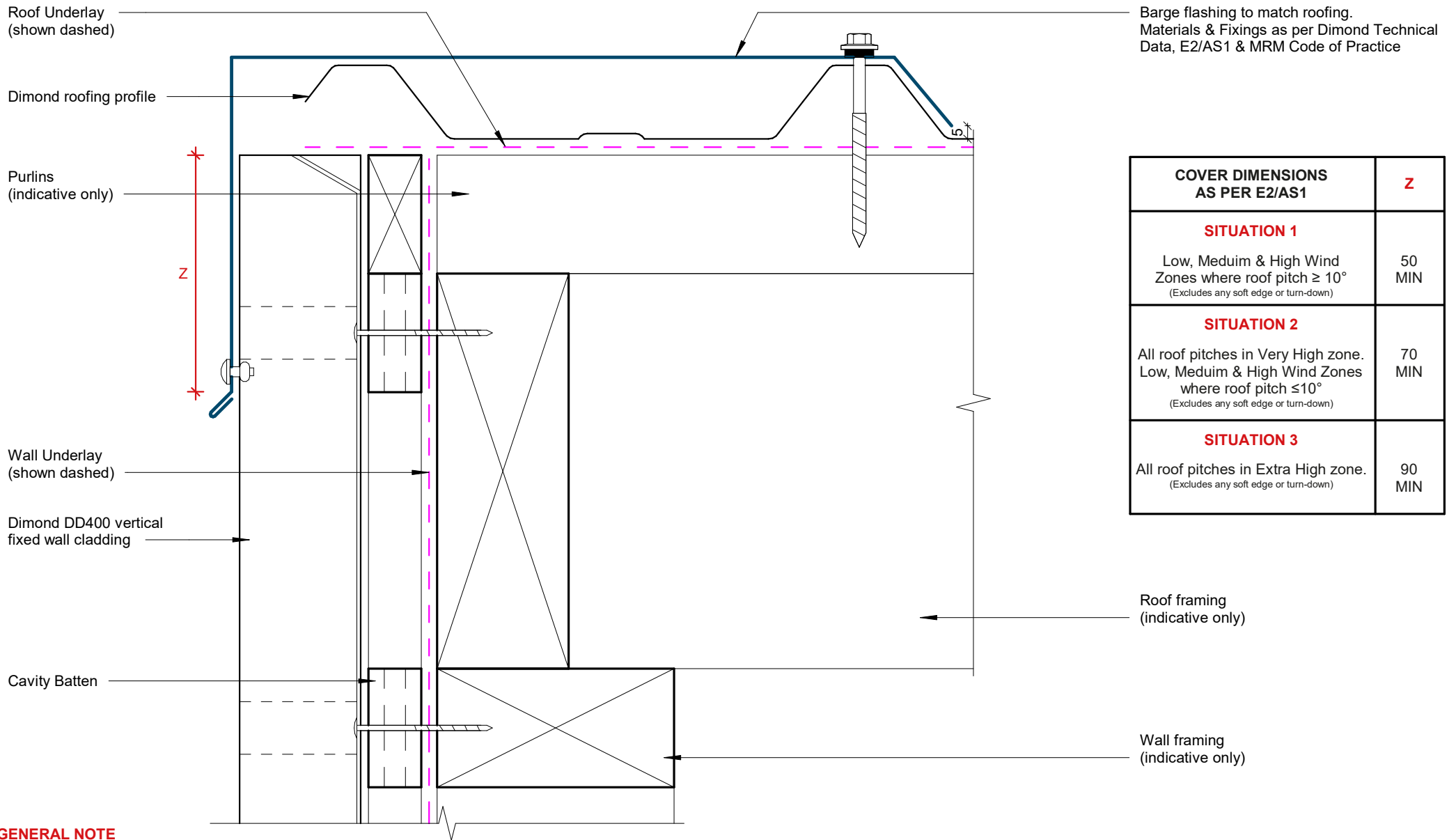


Window Sill Flashing



Transverse Flashing

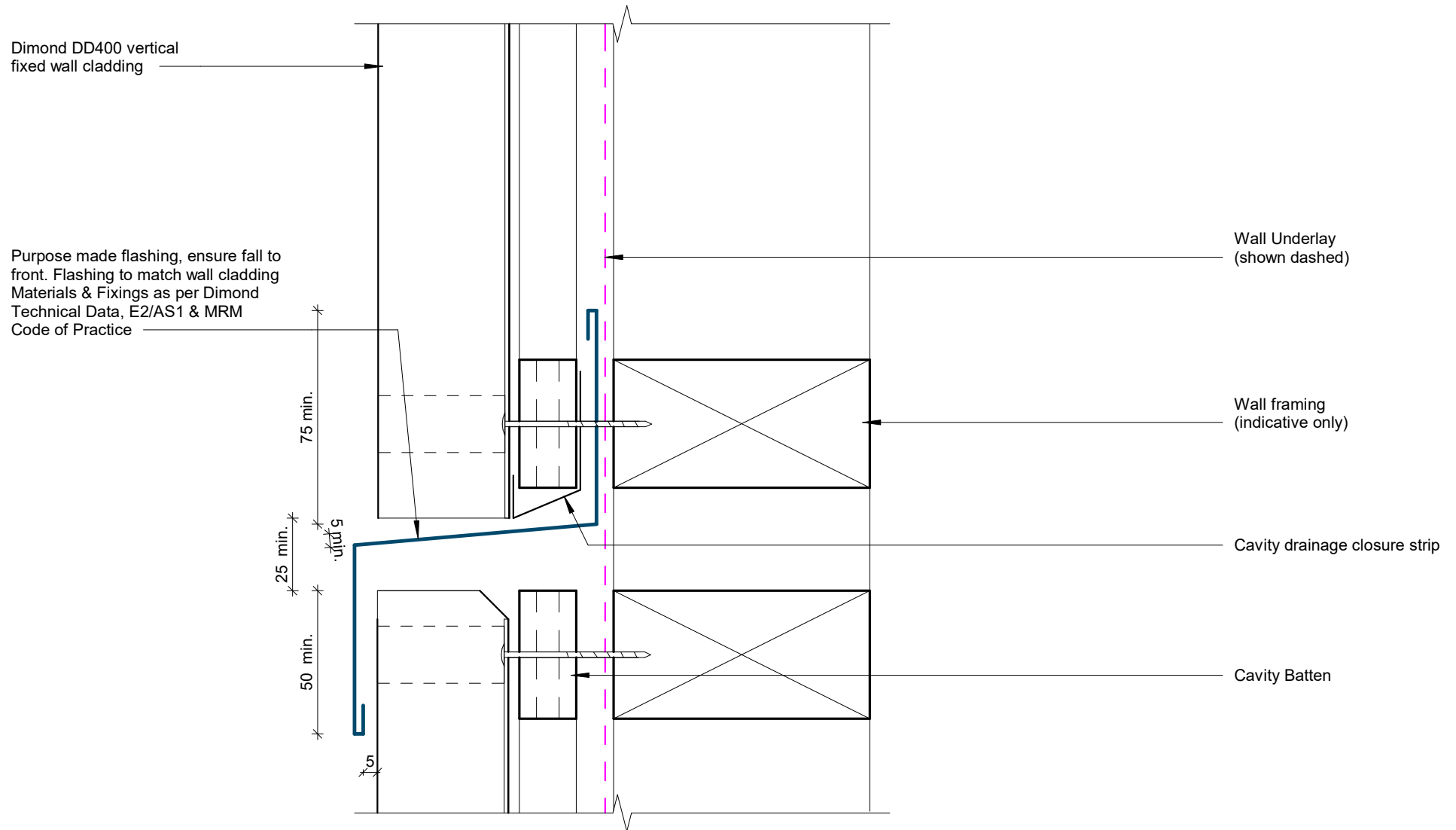
Typical Flashing Detail



GENERAL NOTE

Cavity battens or timber framing that contain copper must be separated from steel cladding by a strip of wall or roof underlay or DPC.

Barge Flashing Detail



GENERAL NOTE

Cavity battens or timber framing that contain copper must be separated from steel cladding by a strip of wall or roof underlay or DPC.

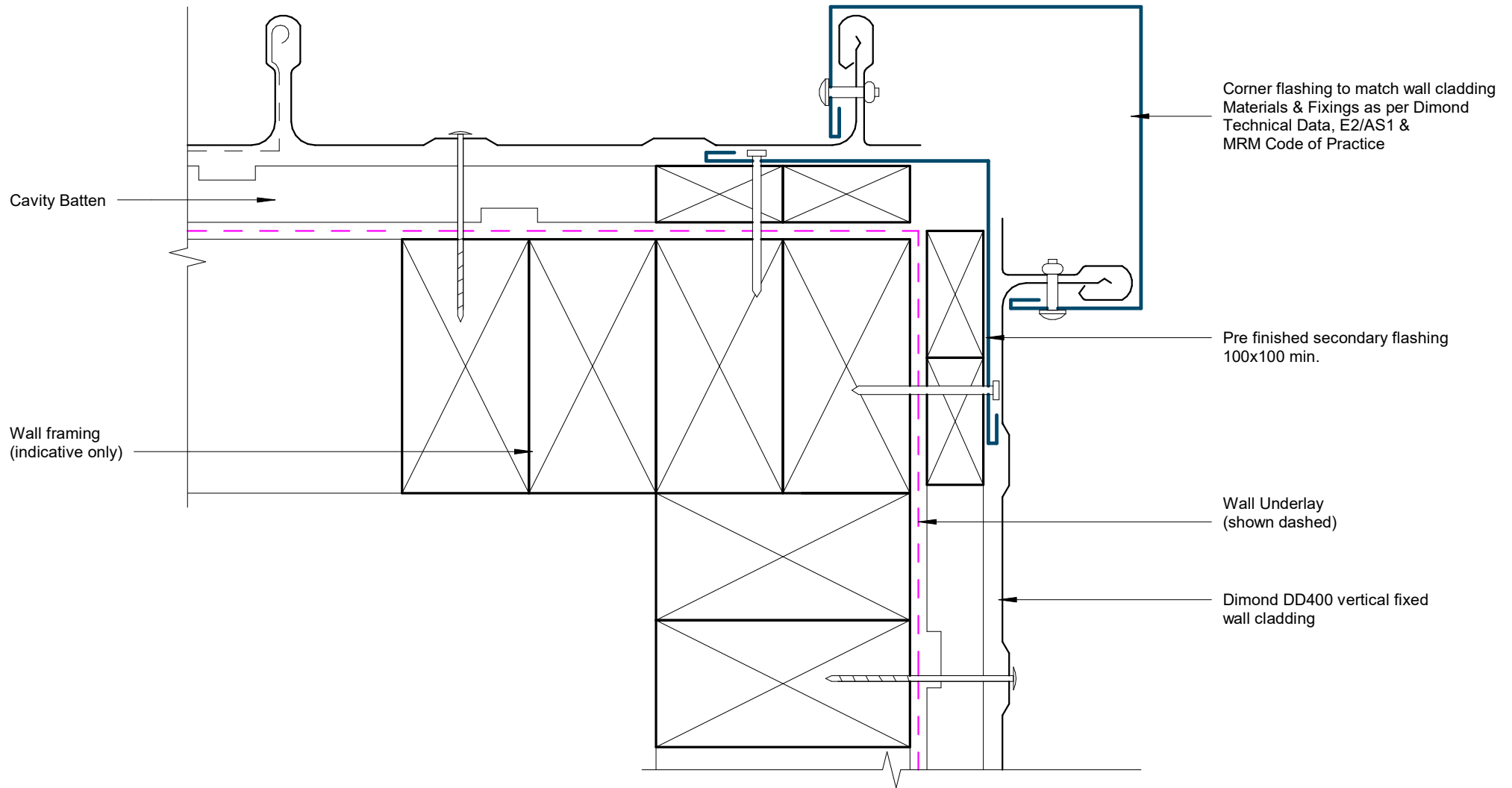
Transverse Junction Detail

Rev: 1 **Dimondek400 Residential Vertical Cladding**



©Dimond 2023, all rights reserved. The information and specifications contained in this document are proprietary to Dimond and may not be used other than for the purpose of designing or building a roof or roofing system solely using products supplied or approved by Dimond ("Permitted Purpose"). You may copy this document solely for the Permitted Purpose, but may not otherwise copy, publish, distribute or modify this document without Dimond's prior written consent. Dimond will not be liable for any use of this document or information and specifications contained in this document, other than for the Permitted Purpose

Date: Sep 2025 Scale: 1 : 2 Sheet: **DDVC04**

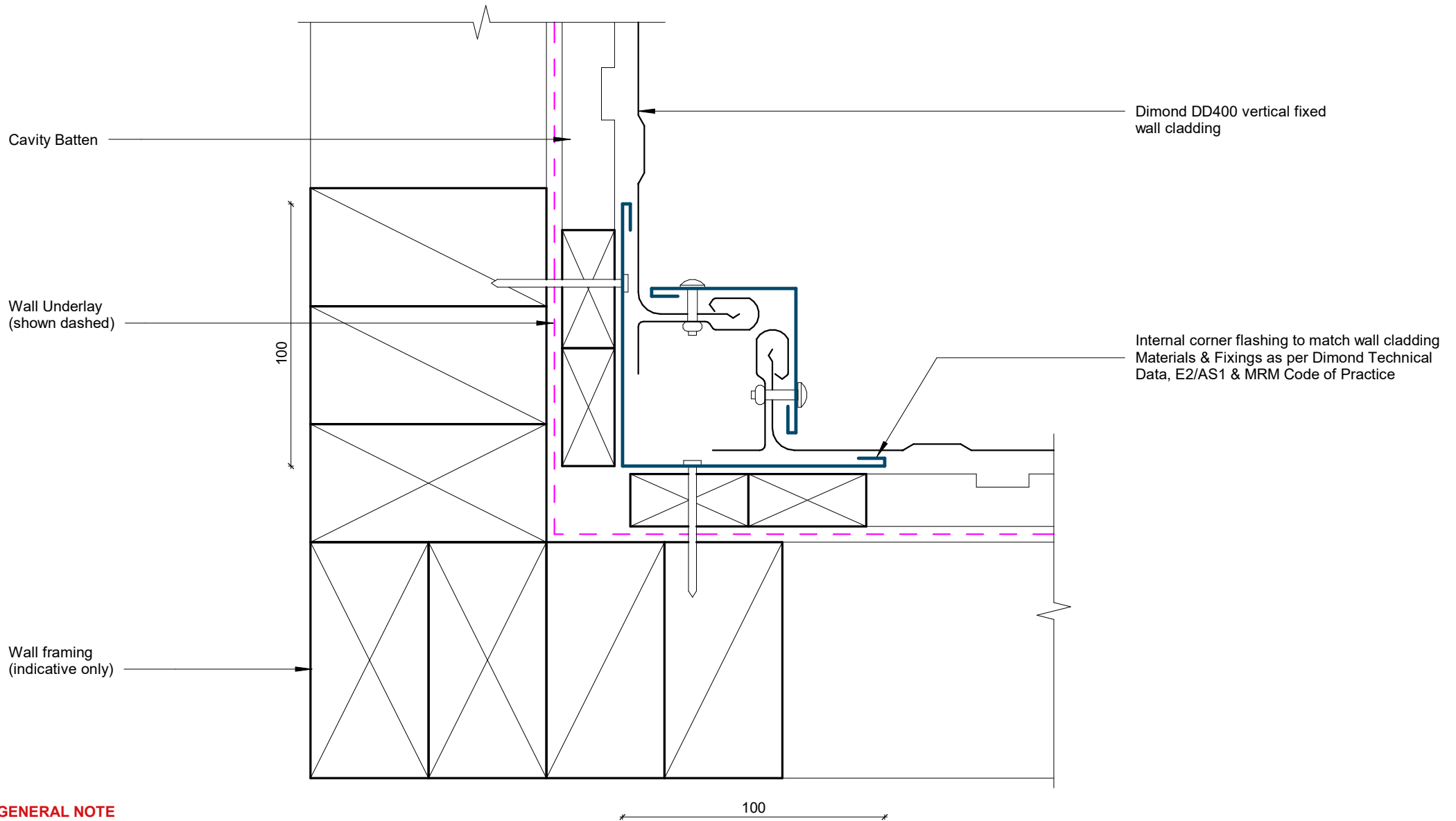


GENERAL NOTE

Cavity battens or timber framing that contain copper must be separated from steel cladding by a strip of wall or roof underlay or DPC.

External Corner Detail

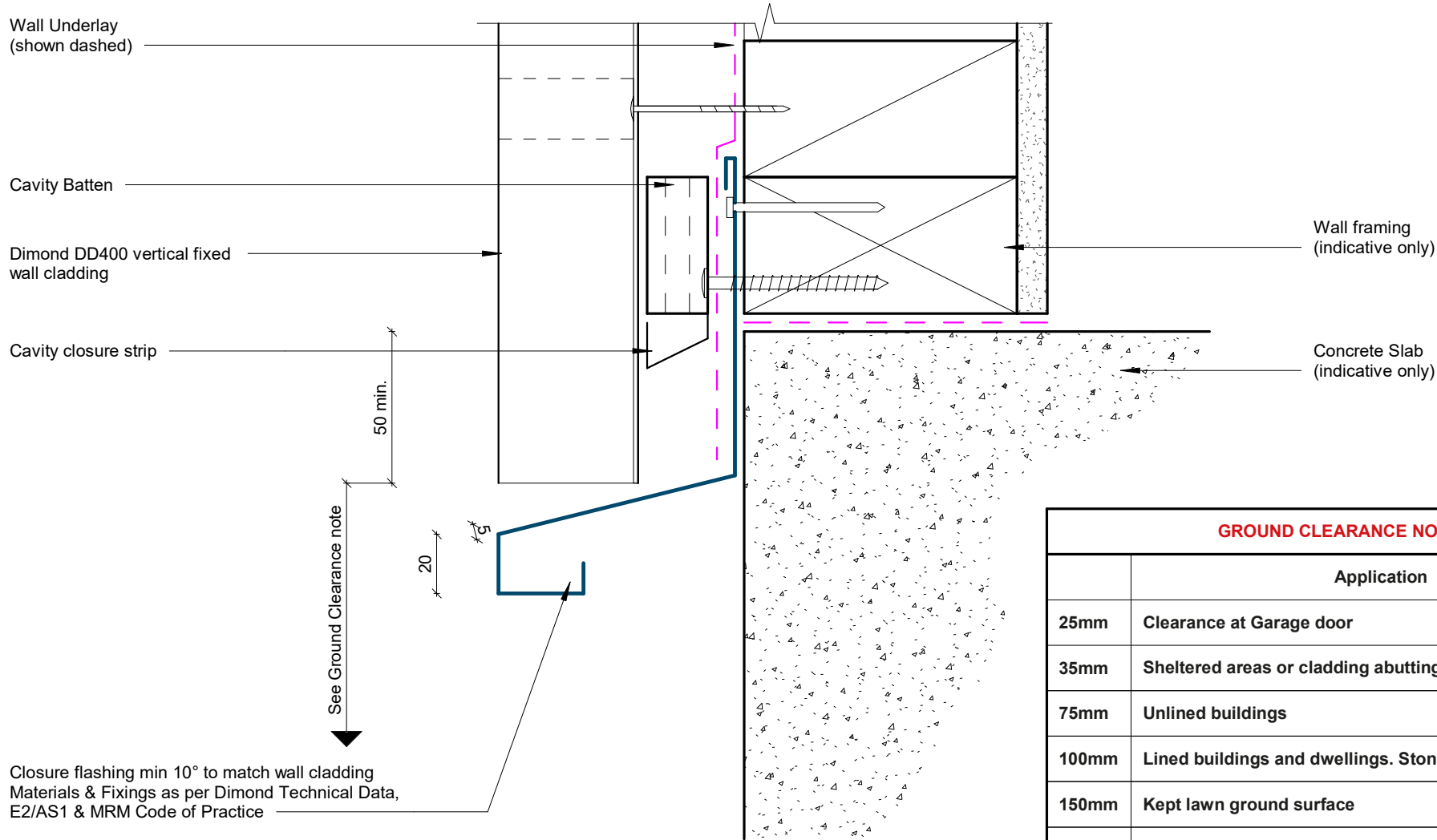
Rev: 1 **Dimondek400 Residential Vertical Cladding**



GENERAL NOTE

Cavity battens or timber framing that contain copper must be separated from steel cladding by a strip of wall or roof underlay or DPC.

Internal Corner Detail



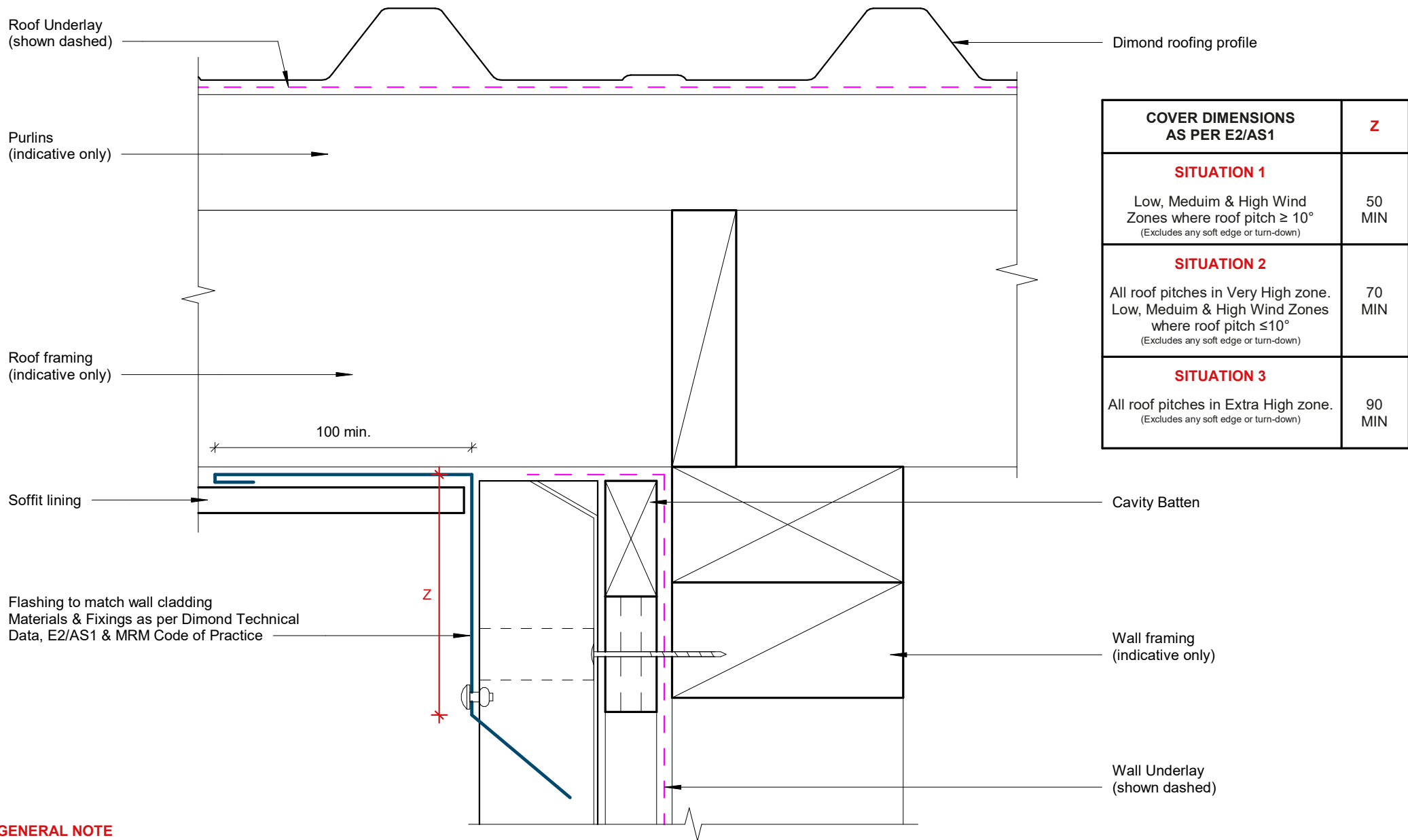
GROUND CLEARANCE NOTE

	Application
25mm	Clearance at Garage door
35mm	Sheltered areas or cladding abutting a deck
75mm	Unlined buildings
100mm	Lined buildings and dwellings. Stone chip ground surface
150mm	Kept lawn ground surface
175mm	Pasture ground surface

GENERAL NOTE

Cavity battens or timber framing that contain copper must be separated from steel cladding by a strip of wall or roof underlay or DPC.

Base Detail



GENERAL NOTE

Cavity battens or timber framing that contain copper must be separated from steel cladding by a strip of wall or roof underlay or DPC.

Soffit Detail

Additional wrap & flashing tape
over head flashing
(shown dashed)

Cavity Batten

Dimond DD400 vertical fixed
wall cladding

Cavity closure strip

15 min.
drip edge

50 min.

10 min
cover

Purpose made head flashing min 15° fall to top
Flashing to match wall cladding
Materials & Fixings as per Dimond Technical
Data, E2/AS1 & MRM Code of Practice

Sealant used for very high
wind zones and above

Line of jamb flashing behind

Wall Underlay
(shown dashed)

75 min.

Wall framing
(indicative only)

Wall lining
(indicative only)

GENERAL NOTE

Cavity battens or timber framing that contain copper must be separated from steel cladding by a strip of wall or roof underlay or DPC.

Window Head Detail

Rev: 1 Dimondek400 Residential Vertical Cladding

Sealant used for very high wind zones and above

Line of head flashing over

10 min.
cover

5

Wall framing
(indicative only)

Dimond DD400 vertical
fixed wall cladding

Cavity Batten

Wall Underlay
(shown dashed)

Wall lining
(indicative only)

100 min.

GENERAL NOTE

Cavity battens or timber framing that contain copper must be separated from steel cladding by a strip of wall or roof underlay or DPC.

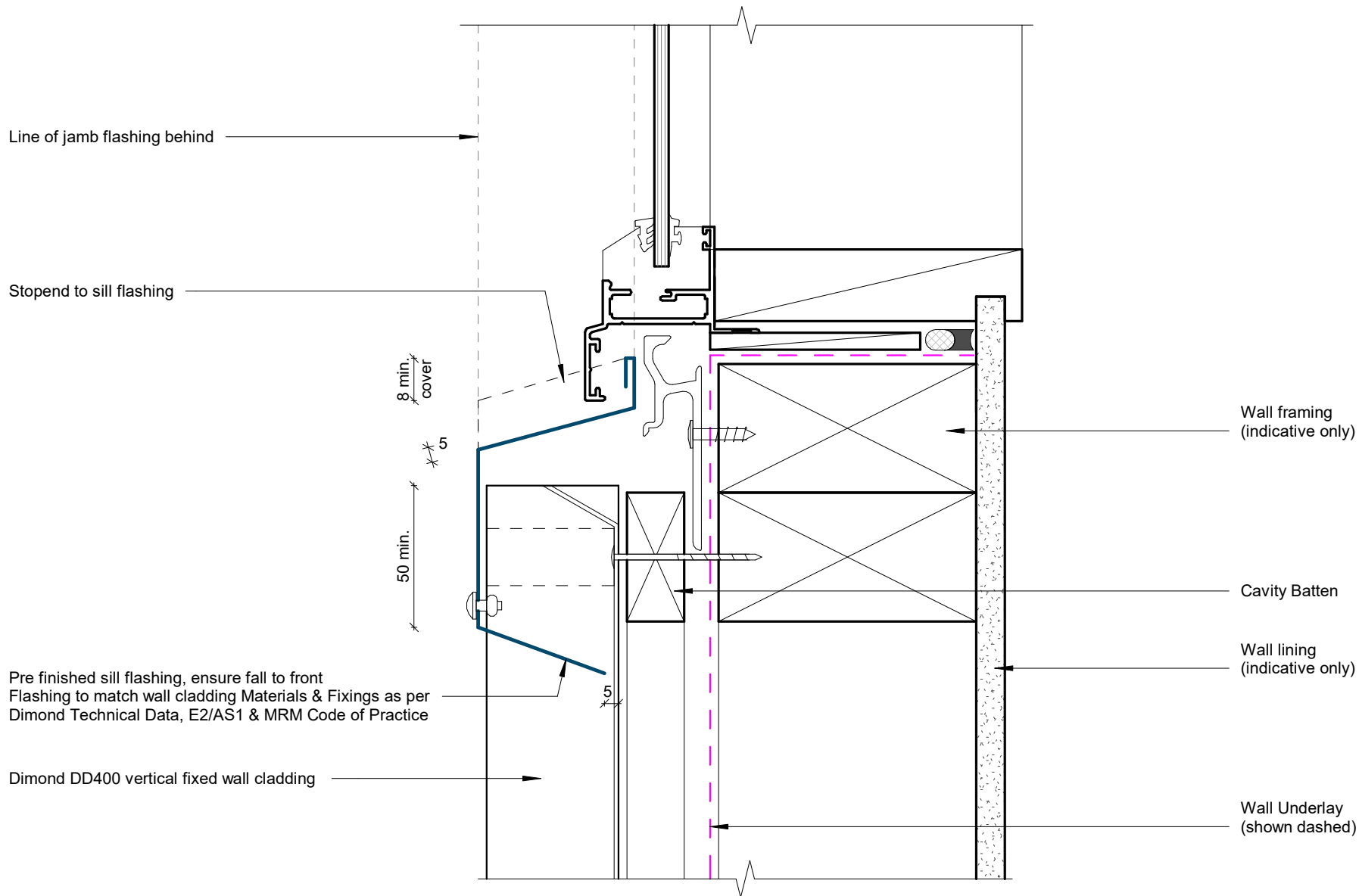
Window Jamb Detail

Rev: 1 Dimondek400 Residential Vertical Cladding



©Dimond 2023, all rights reserved. The information and specifications contained in this document are proprietary to Dimond and may not be used other than for the purpose of designing or building a roof or roofing system solely using products supplied or approved by Dimond ("Permitted Purpose"). You may copy this document solely for the Permitted Purpose, but may not otherwise copy, publish, distribute or modify this document without Dimond's prior written consent. Dimond will not be liable for any use of this document or information and specifications contained in this document, other than for the Permitted Purpose

Date: Sep 2025 Scale: 1 : 2 Sheet: DDVC10

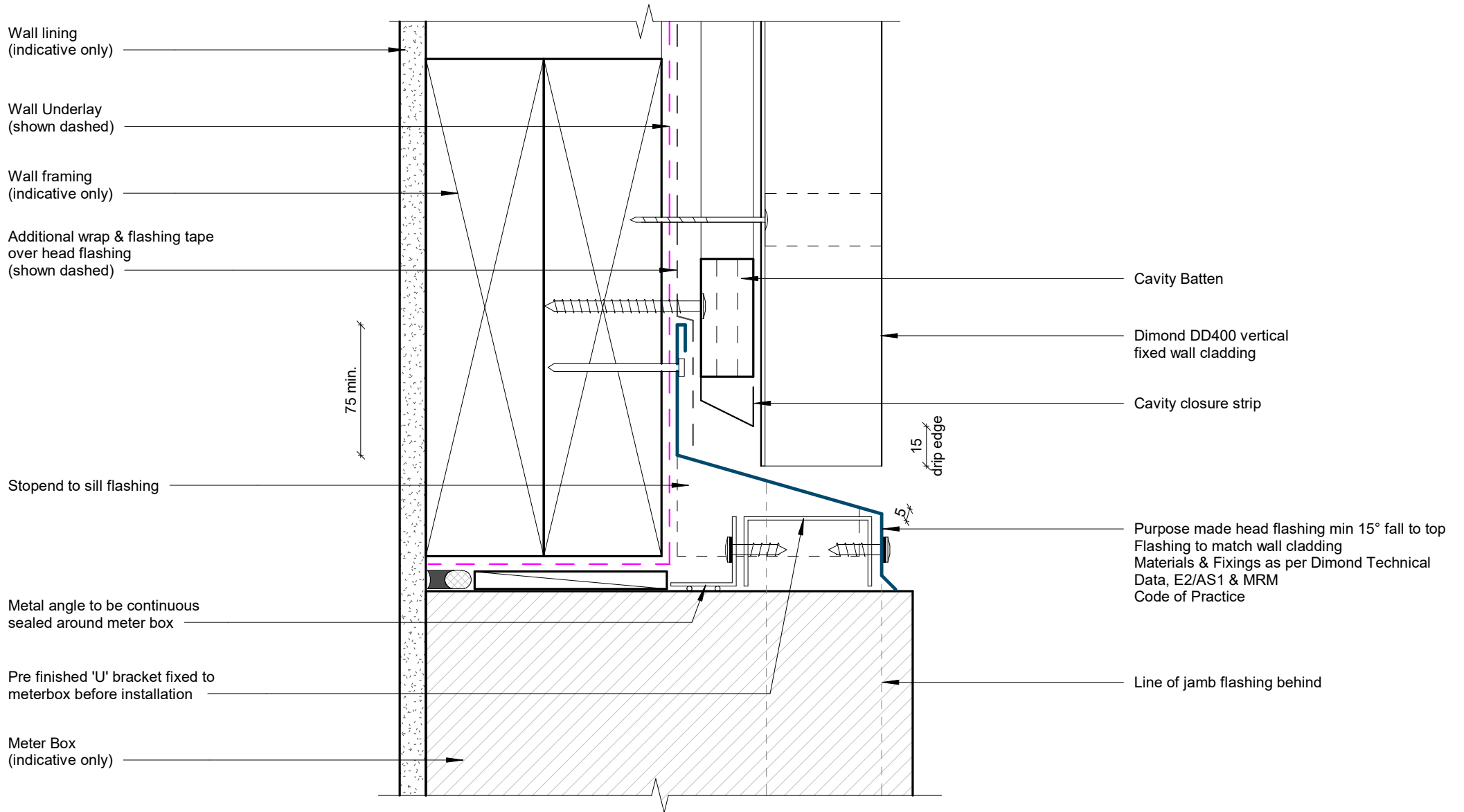


GENERAL NOTE

Cavity battens or timber framing that contain copper must be separated from steel cladding by a strip of wall or roof underlay or DPC.

Window Sill Detail

Rev: 1 **Dimondek400 Residential Vertical Cladding**



GENERAL NOTE

Cavity battens or timber framing that contain copper must be separated from steel cladding by a strip of wall or roof underlay or DPC.

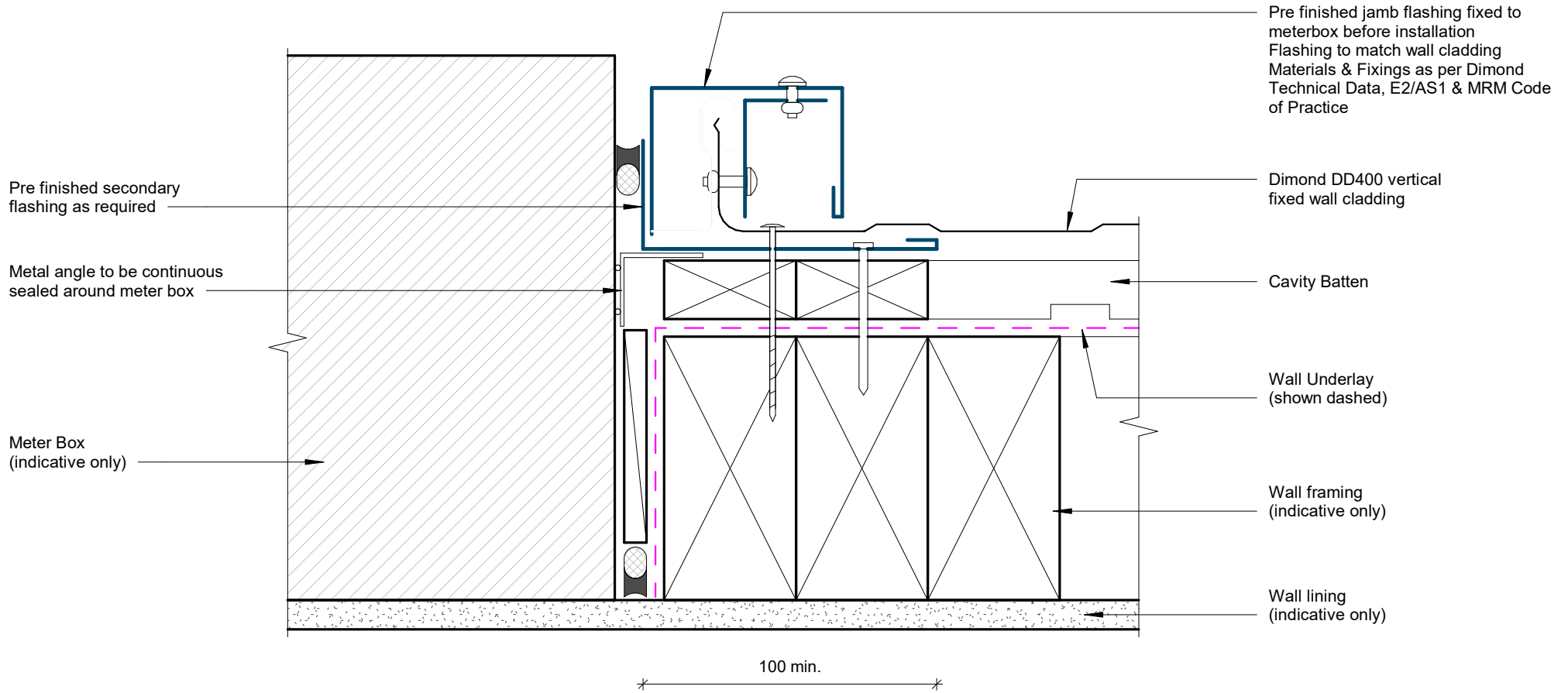
Meterbox Head Detail

Rev: 1 Dimondek400 Residential Vertical Cladding



©Dimond 2023, all rights reserved. The information and specifications contained in this document are proprietary to Dimond and may not be used other than for the purpose of designing or building a roof or roofing system solely using products supplied or approved by Dimond ("Permitted Purpose"). You may copy this document solely for the Permitted Purpose, but may not otherwise copy, publish, distribute or modify this document without Dimond's prior written consent. Dimond will not be liable for any use of this document or information and specifications contained in this document, other than for the Permitted Purpose

Date: Sep 2025 Scale: 1 : 2 Sheet: DDVC12

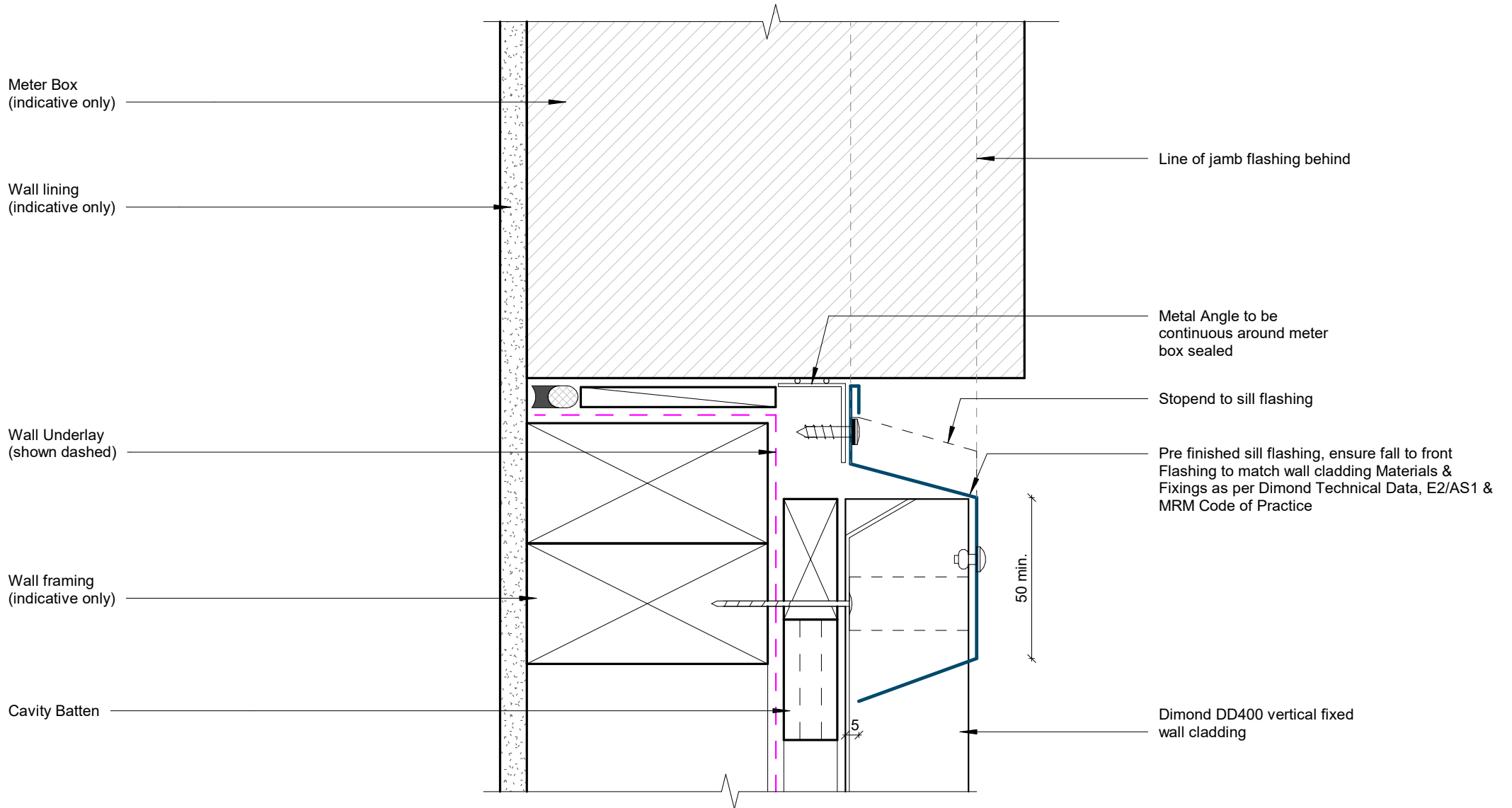


GENERAL NOTE

Cavity battens or timber framing that contain copper must be separated from steel cladding by a strip of wall or roof underlay or DPC.

Meterbox Jamb Detail

Rev: 1 **Dimondek400 Residential Vertical Cladding**

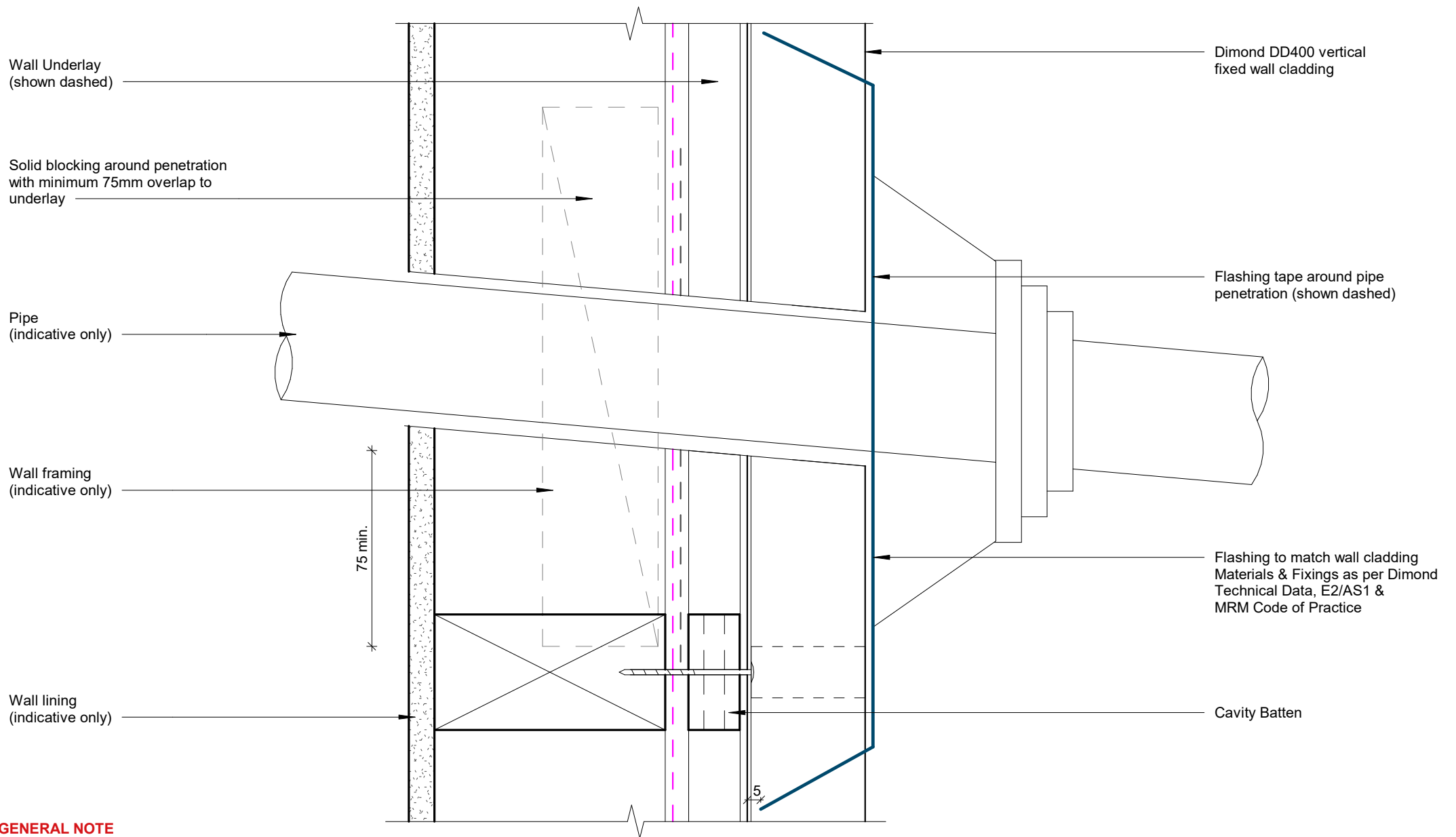


GENERAL NOTE

Cavity battens or timber framing that contain copper must be separated from steel cladding by a strip of wall or roof underlay or DPC.

Meterbox Sill Detail

Rev: 1 **Dimondek400 Residential Vertical Cladding**



GENERAL NOTE

Cavity battens or timber framing that contain copper must be separated from steel cladding by a strip of wall or roof underlay or DPC.

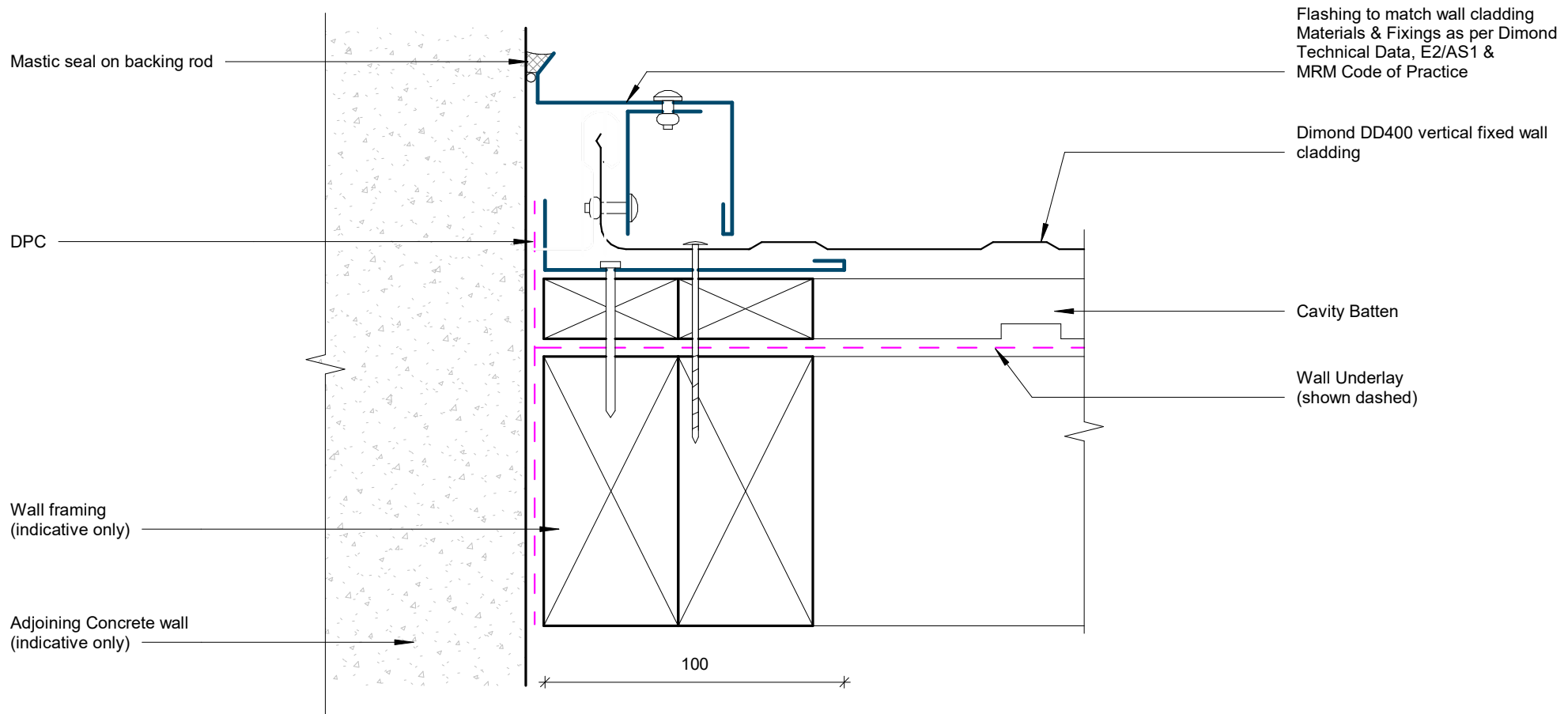
Pipe Penetration Detail

Rev: 1 **Dimondek400 Residential Vertical Cladding**



©Dimond 2023, all rights reserved. The information and specifications contained in this document are proprietary to Dimond and may not be used other than for the purpose of designing or building a roof or roofing system solely using products supplied or approved by Dimond ("Permitted Purpose"). You may copy this document solely for the Permitted Purpose, but may not otherwise copy, publish, distribute or modify this document without Dimond's prior written consent. Dimond will not be liable for any use of this document or information and specifications contained in this document, other than for the Permitted Purpose

Date: Sep 2025 Scale: 1 : 2 Sheet: **DDVC15**



GENERAL NOTE

Cavity battens or timber framing that contain copper must be separated from steel cladding by a strip of wall or roof underlay or DPC.

Cladding to Concrete Junction Detail

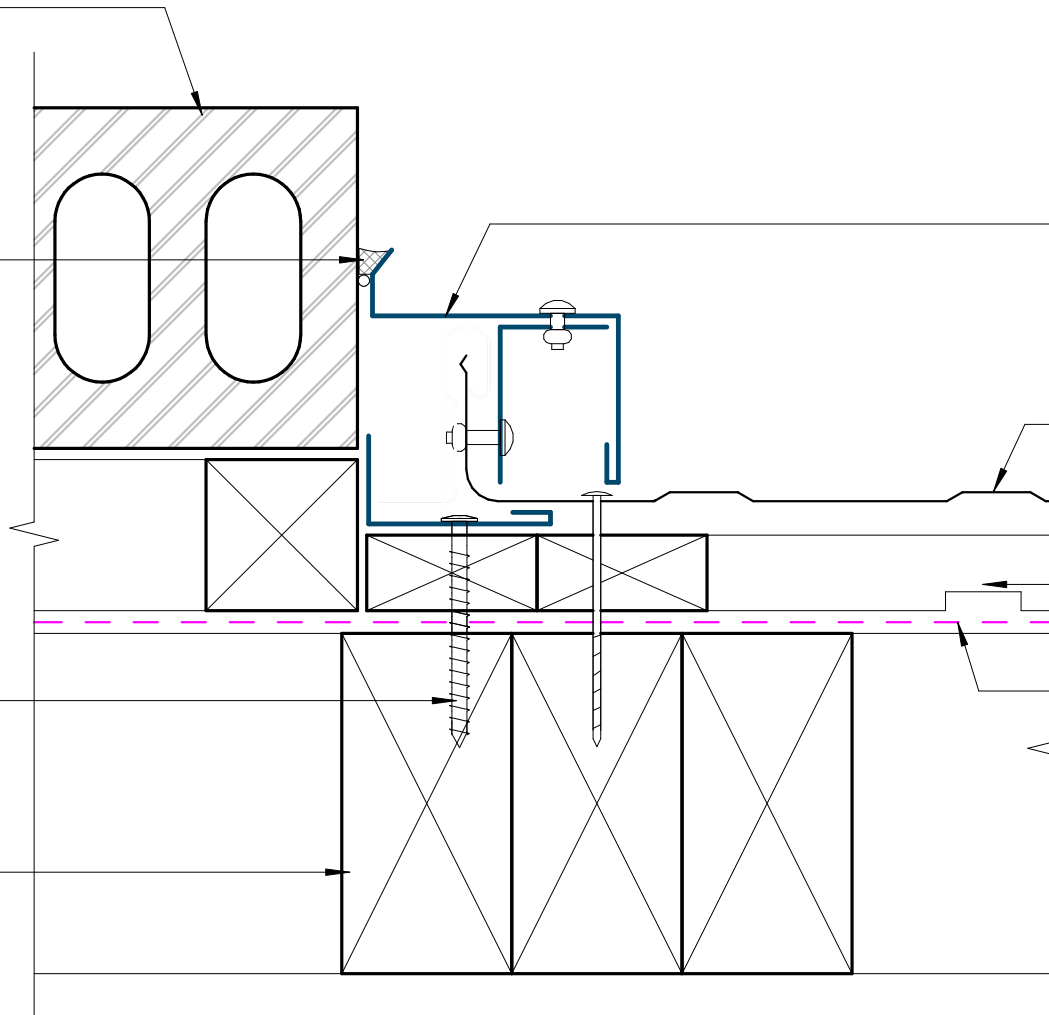
Rev: 1 Dimondek400 Residential Vertical Cladding

Adjoining Brick veneer on cavity
(indicative only)

Mastic seal on backing rod

Prefinished screw

Wall framing
(indicative only)



Flashing to match wall cladding
Materials & Fixings as per Dimond
Technical Data, E2/AS1 &
MRM Code of Practice

Dimond DD400 vertical
fixed wall cladding

Cavity Batten

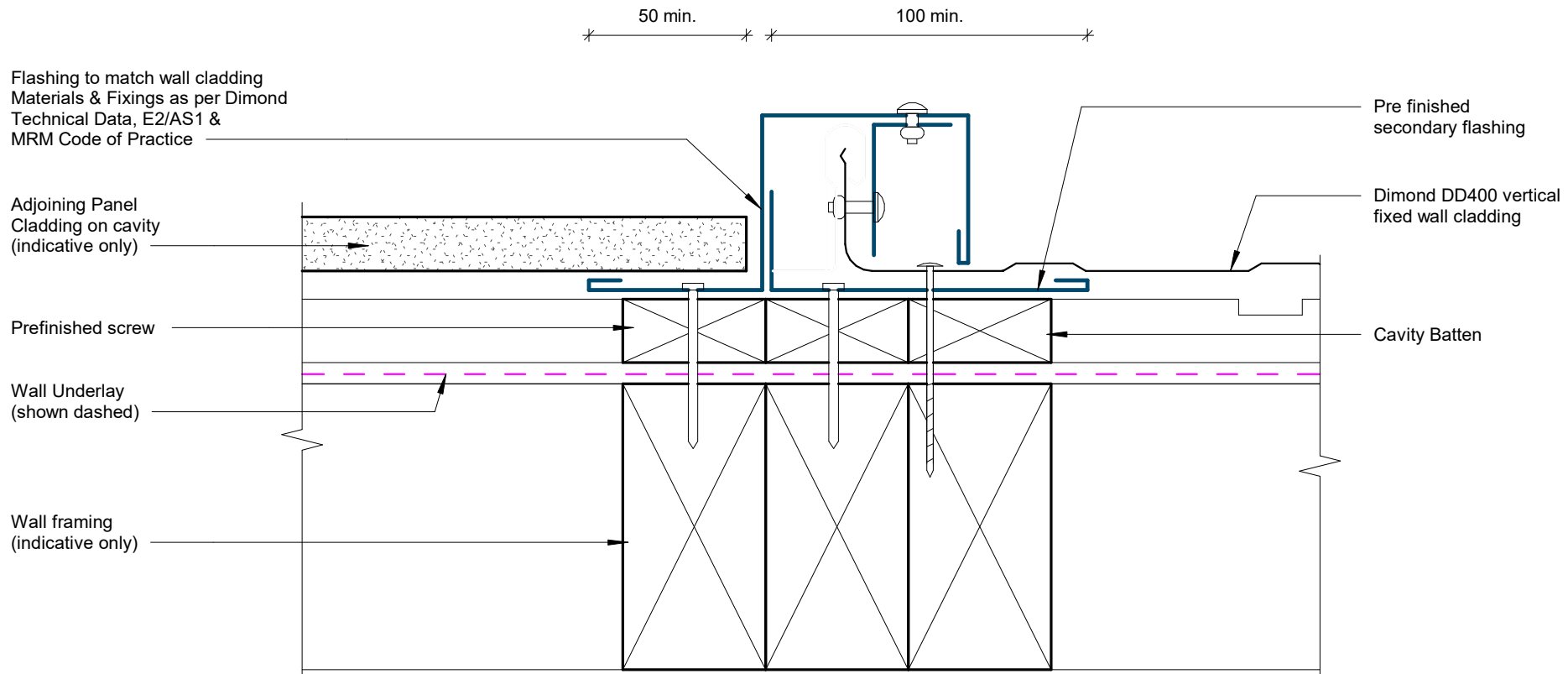
Wall Underlay
(shown dashed)

GENERAL NOTE

Cavity battens or timber framing that contain copper must be separated from steel cladding by a strip of wall or roof underlay or DPC.

Cladding to Brick Junction Detail

Rev: 1 Dimondek400 Residential Vertical Cladding

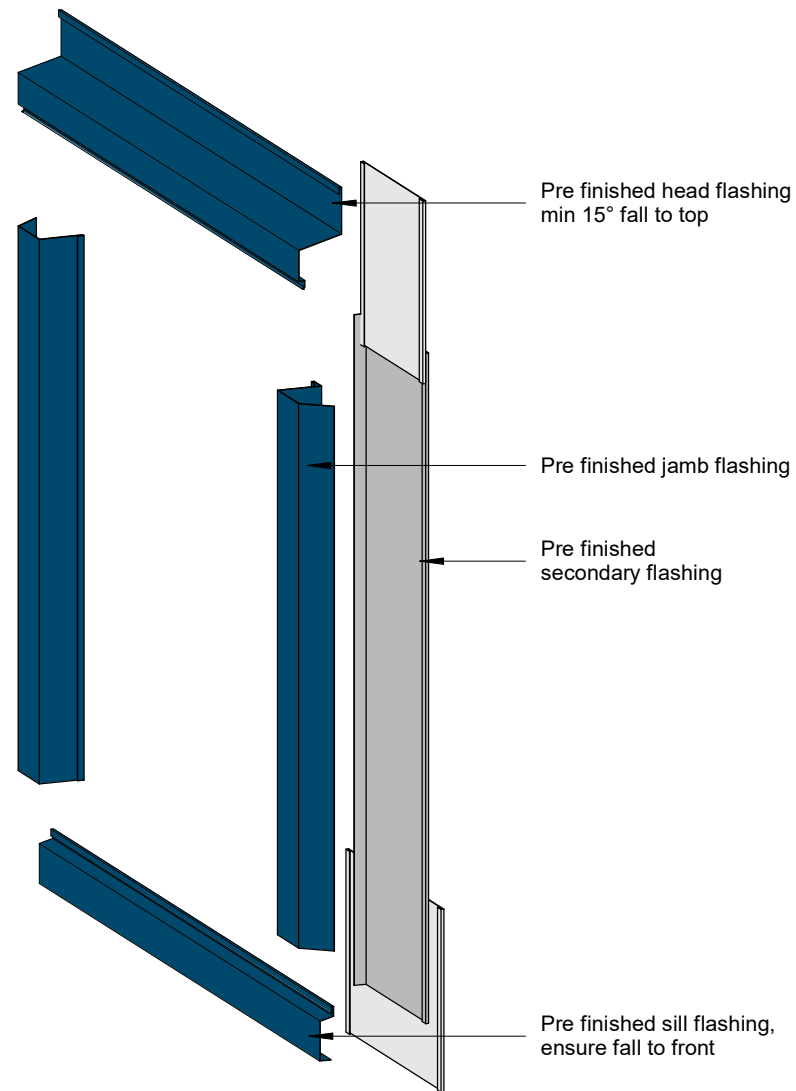
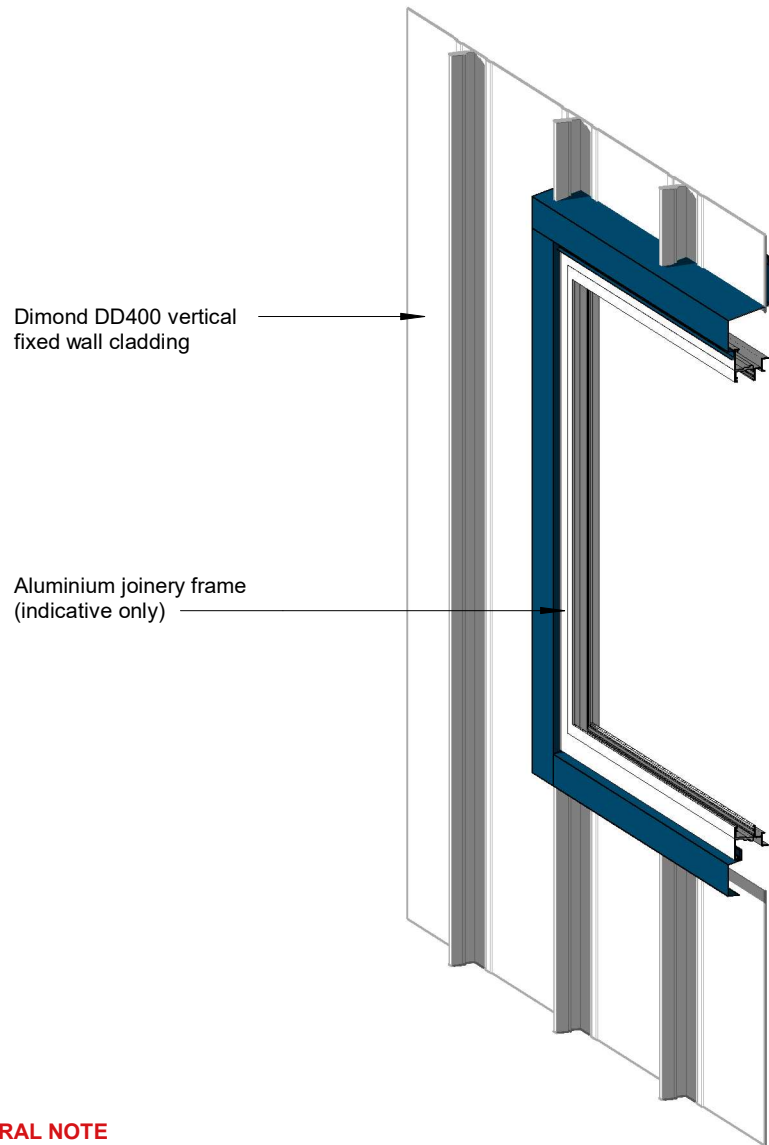


GENERAL NOTE

Cavity battens or timber framing that contain copper must be separated from steel cladding by a strip of wall or roof underlay or DPC.

Cladding to Panel Junction Detail

Rev: 1 **Dimondek400 Residential Vertical Cladding**



GENERAL NOTE

Cavity battens or timber framing that contain copper must be separated from steel cladding by a strip of wall or roof underlay or DPC.

Flashing to match wall cladding

Materials & Fixings as per Dimond Technical Data, E2/AS1 & MRM Code of Practice

3D Window Flashing Detail

Rev: 1 Dimondek400 Residential Vertical Cladding