

DIMONDEK 400

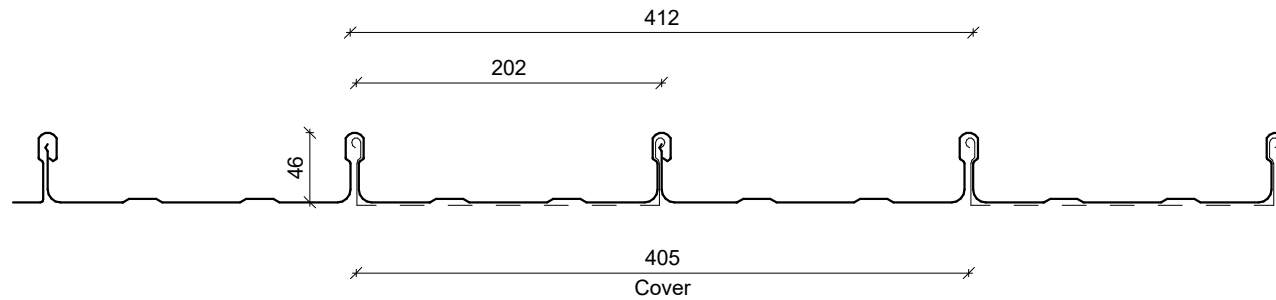
COMMERCIAL VERTICAL WALL CLADDING

DETAILS:

REV: DATE:

DD4CVC00	Cover Sheet	1	Sep 2025
DD4CVC01	Profile Summary	1	Sep 2025
DD4CVC02	Typical Flashing Detail	1	Sep 2025
DD4CVC03	Barge Detail	1	Sep 2025
DD4CVC04	Wall to Roof Transverse Detail	1	Sep 2025
DD4CVC05	Wall to Roof Detail	1	Sep 2025
DD4CVC06	Box Gutter Detail	1	Sep 2025
DD4CVC07	Wall to Roof Apex Detail	1	Sep 2025
DD4CVC08	External Corner Detail	1	Sep 2025
DD4CVC09	Internal Corner Detail	1	Sep 2025
DD4CVC10	Base Detail	1	Sep 2025
DD4CVC11	Window / Door Head Detail	1	Sep 2025
DD4CVC12	Window / Door Jamb Detail	1	Sep 2025
DD4CVC13	Window Sill Detail	1	Sep 2025

PROFILE OVERVIEW	
RIB TYPE	High
RIBS PER SHEET	3 Ribs per sheet
WIDTH	405mm Cover, 412mm Sheet

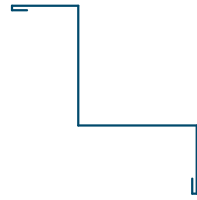


Profile Summary

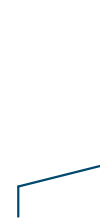
Rev: 1 **Dimondek 400 Commercial Vertical Cladding**



**External Corner /
Barge Flashing**



Internal Corner Flashing



Base Flashing



Eaves Flashing



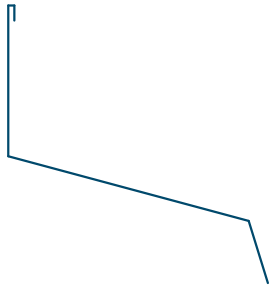
Window Sill Flashing



Window Head Flashing



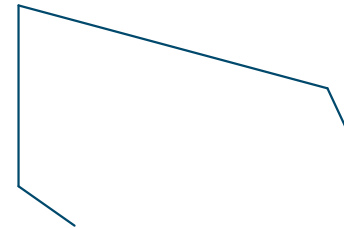
Window Jamb Flashing



Wall to Roof Flashing 1



Wall to Roof Flashing 2



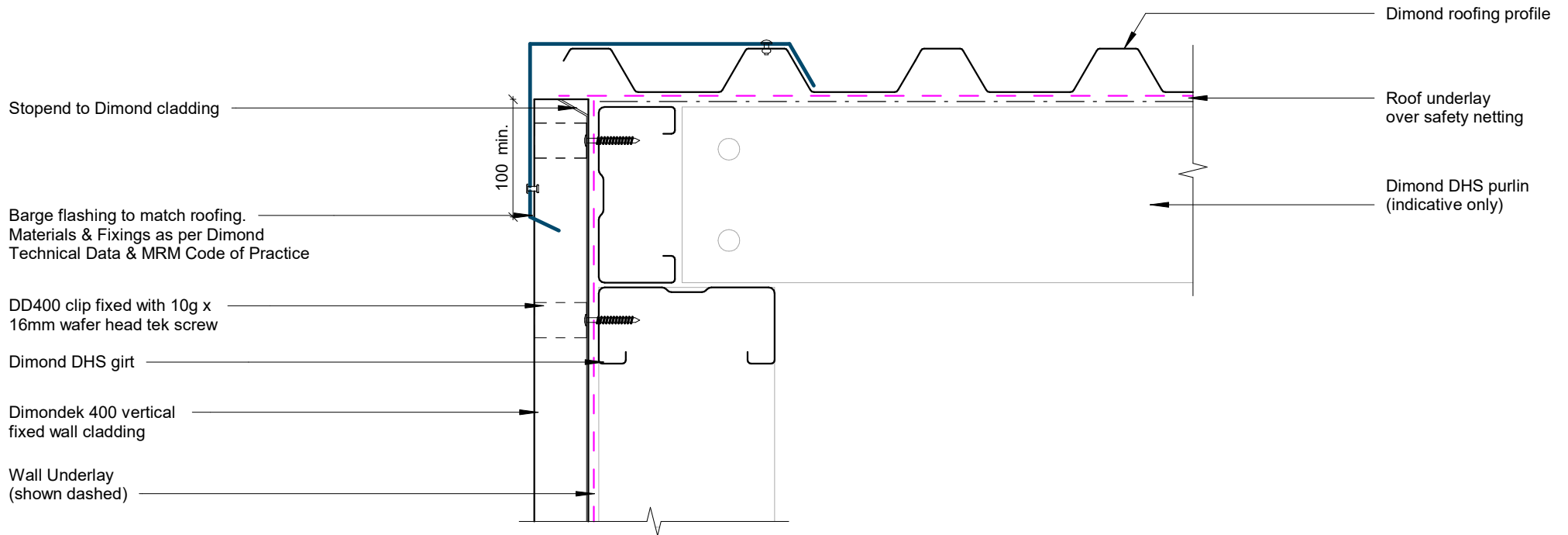
Wall Roof to Wall Apex Flashing

Typical Flashing Detail

Rev: 1 **Dimondek 400 Commercial Vertical Cladding**

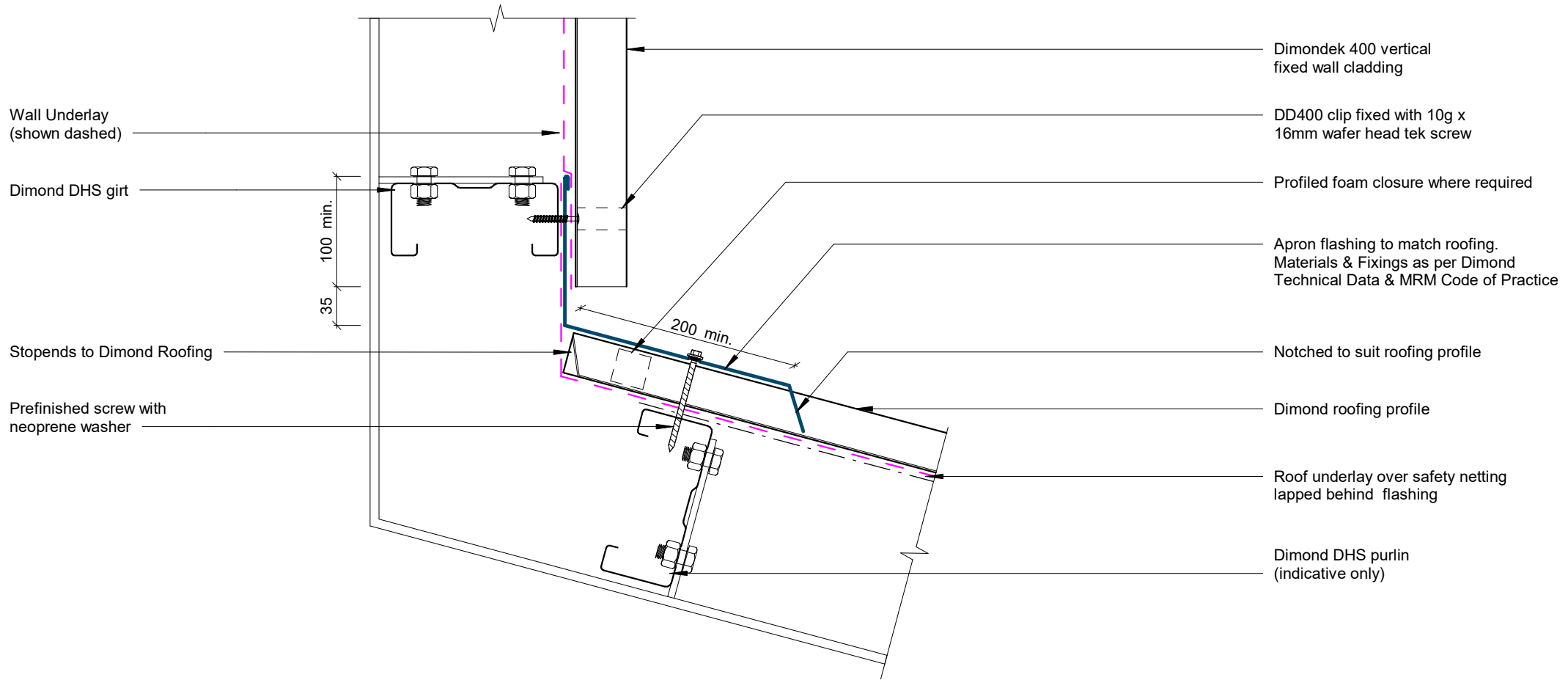


©Dimond 2023, all rights reserved. The information and specifications contained in this document are proprietary to Dimond and may not be used other than for the purpose of designing or building a roof or roofing system solely using products supplied or approved by Dimond ("Permitted Purpose"). You may copy this document solely for the Permitted Purpose, but may not otherwise copy, publish, distribute or modify this document without Dimond's prior written consent. Dimond will not be liable for any use of this document or information and specifications contained in this document, other than for the Permitted Purpose



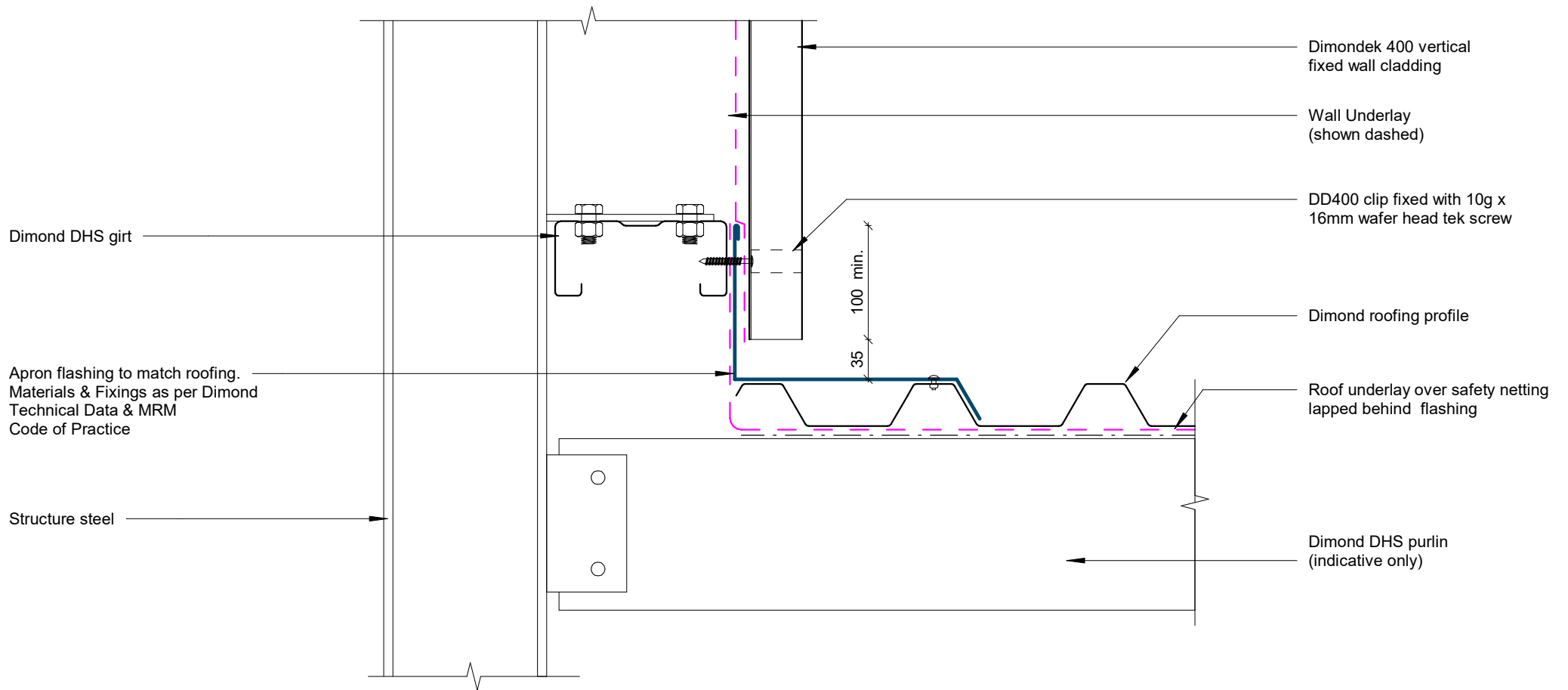
Barge Detail

Rev: 1 Dimondek 400 Commercial Vertical Cladding



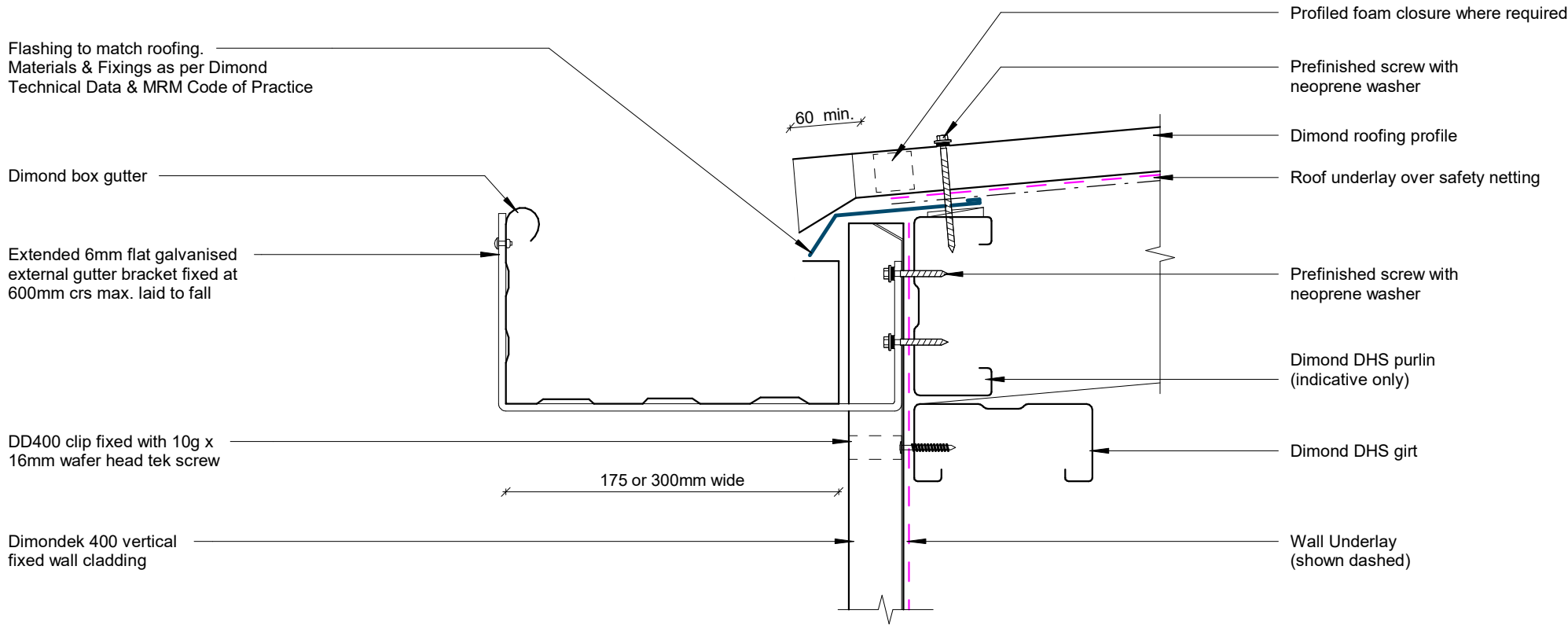
Wall to Roof Transverse Detail

Rev: 1 Dimondek 400 Commercial Vertical Cladding



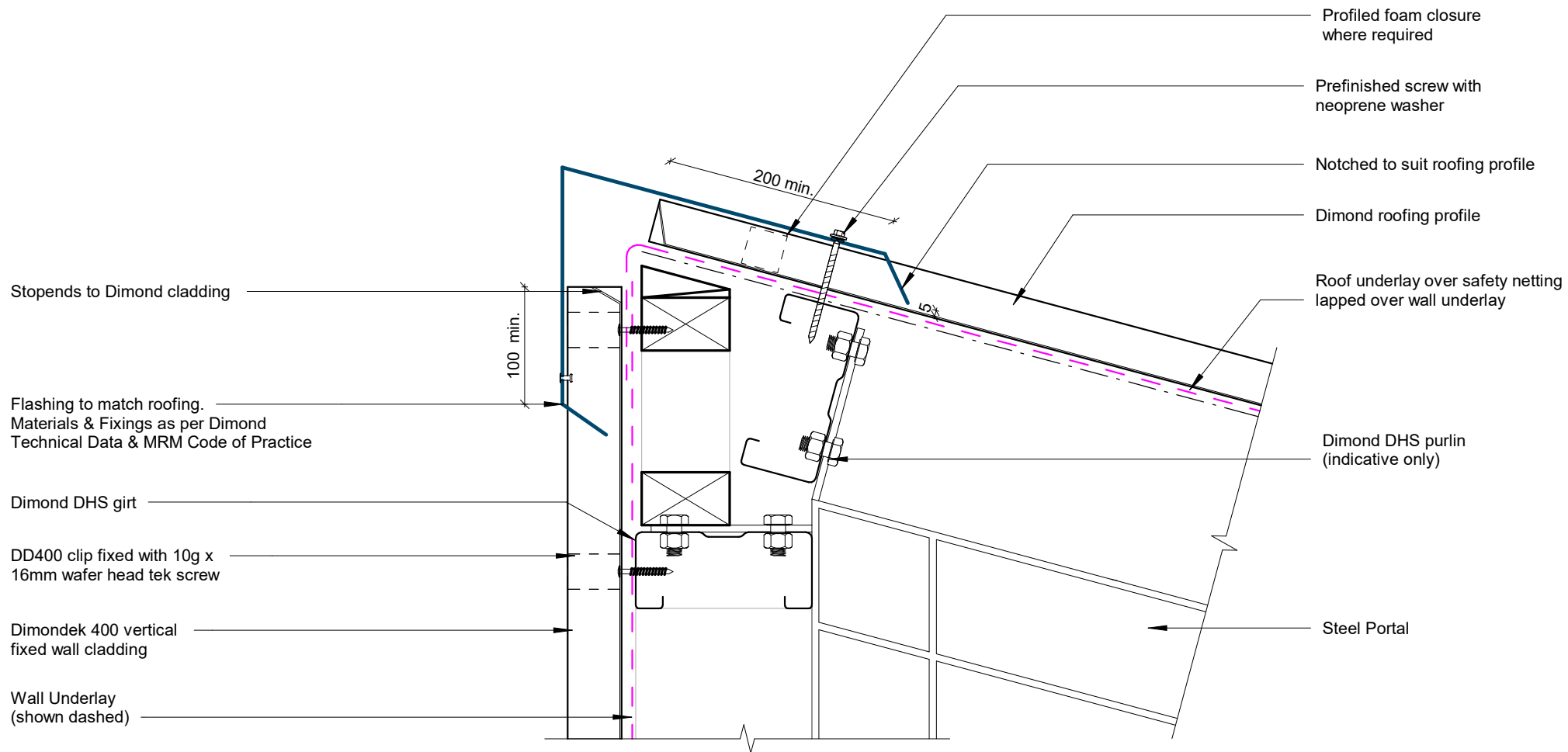
Wall to Roof Detail

Rev: 1 Dimondek 400 Commercial Vertical Cladding



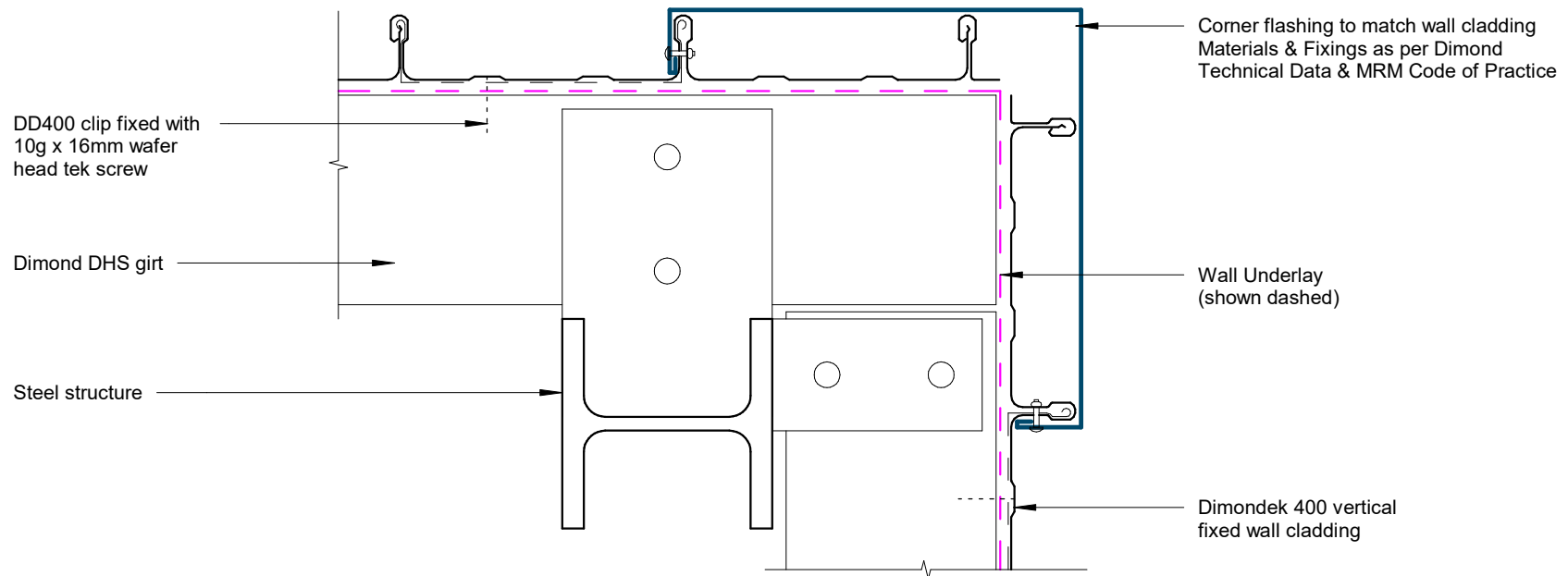
Box Gutter Detail

Rev: 1 Dimondek 400 Commercial Vertical Cladding



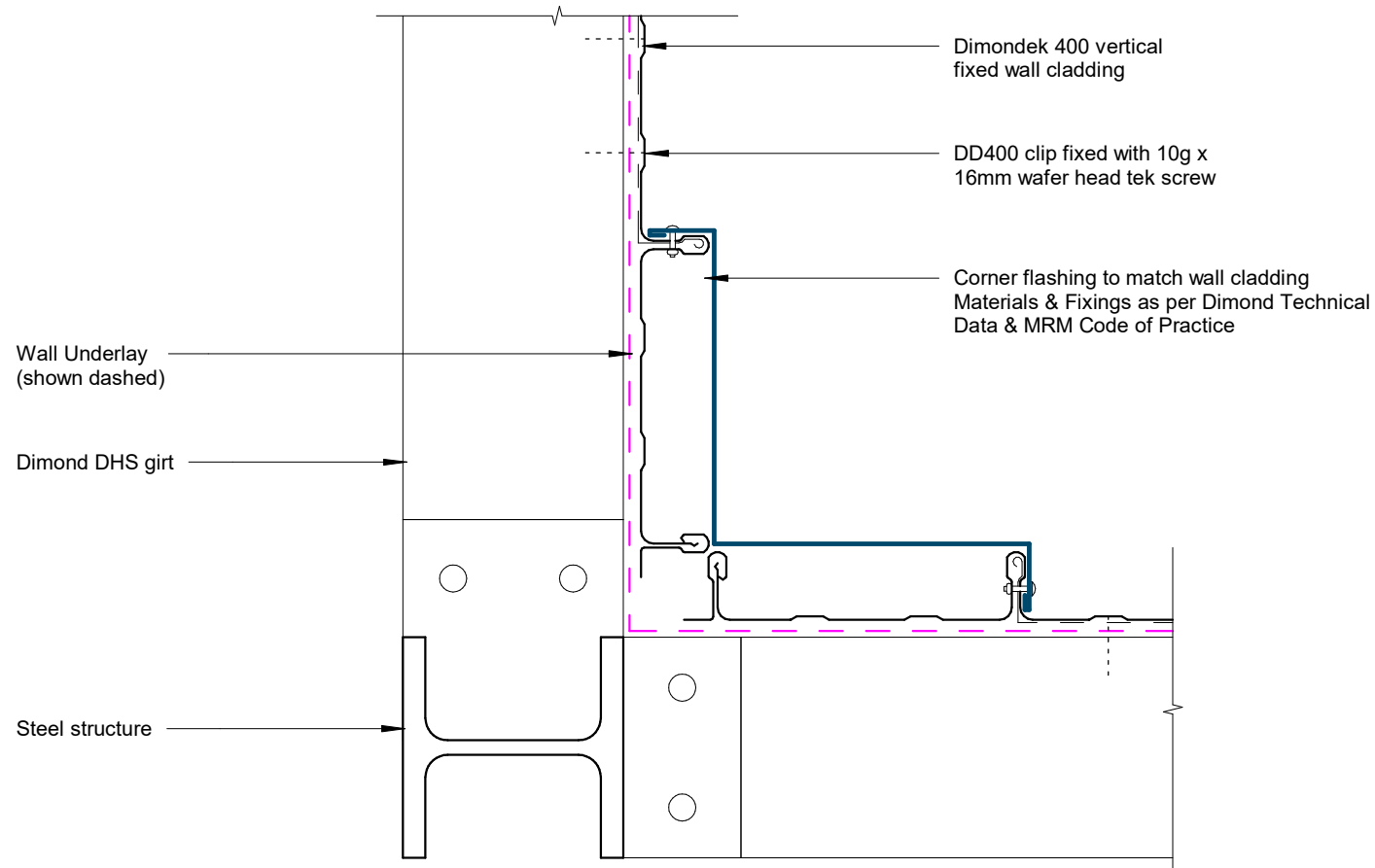
Wall to Roof Apex Detail

Rev: 1 Dimondek 400 Commercial Vertical Cladding



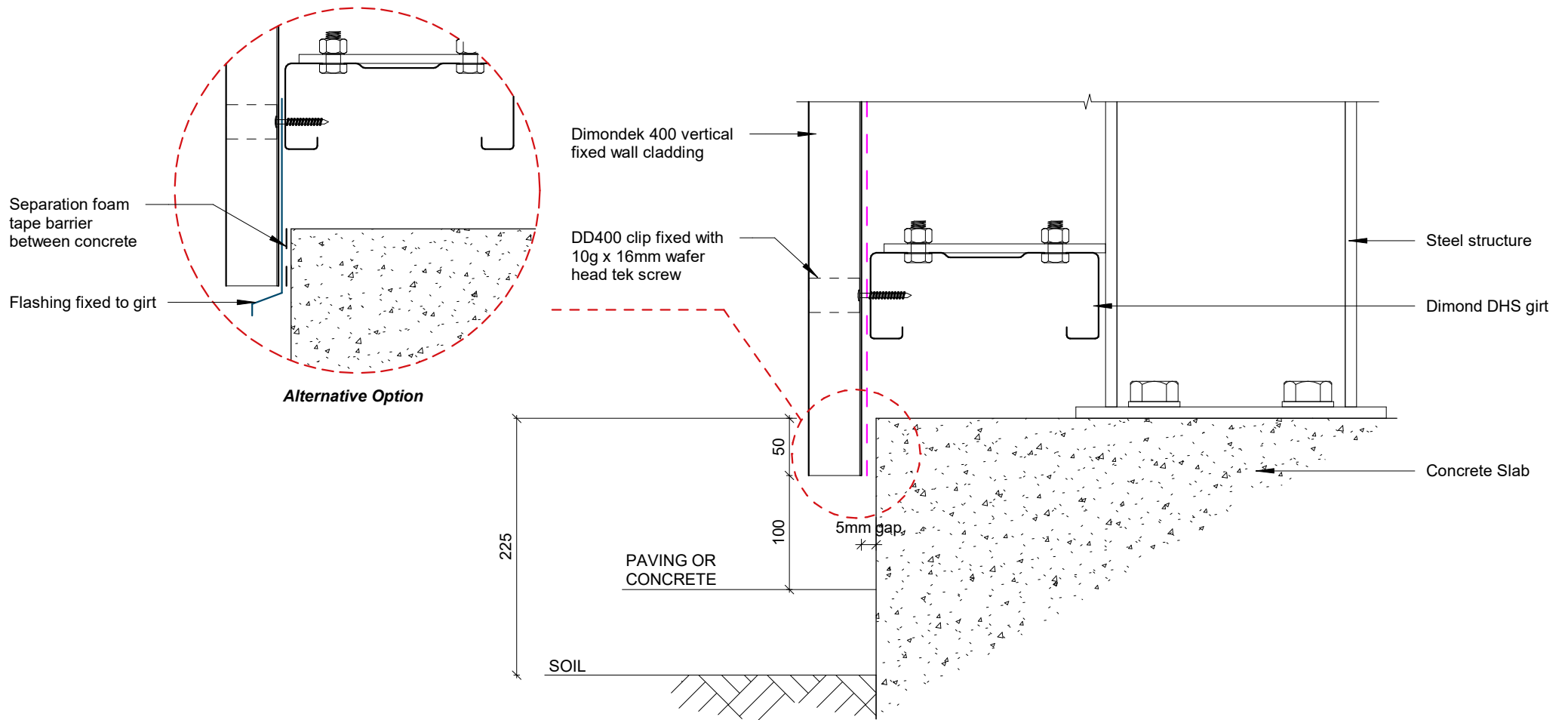
External Corner Detail

Rev: 1 Dimondek 400 Commercial Vertical Cladding



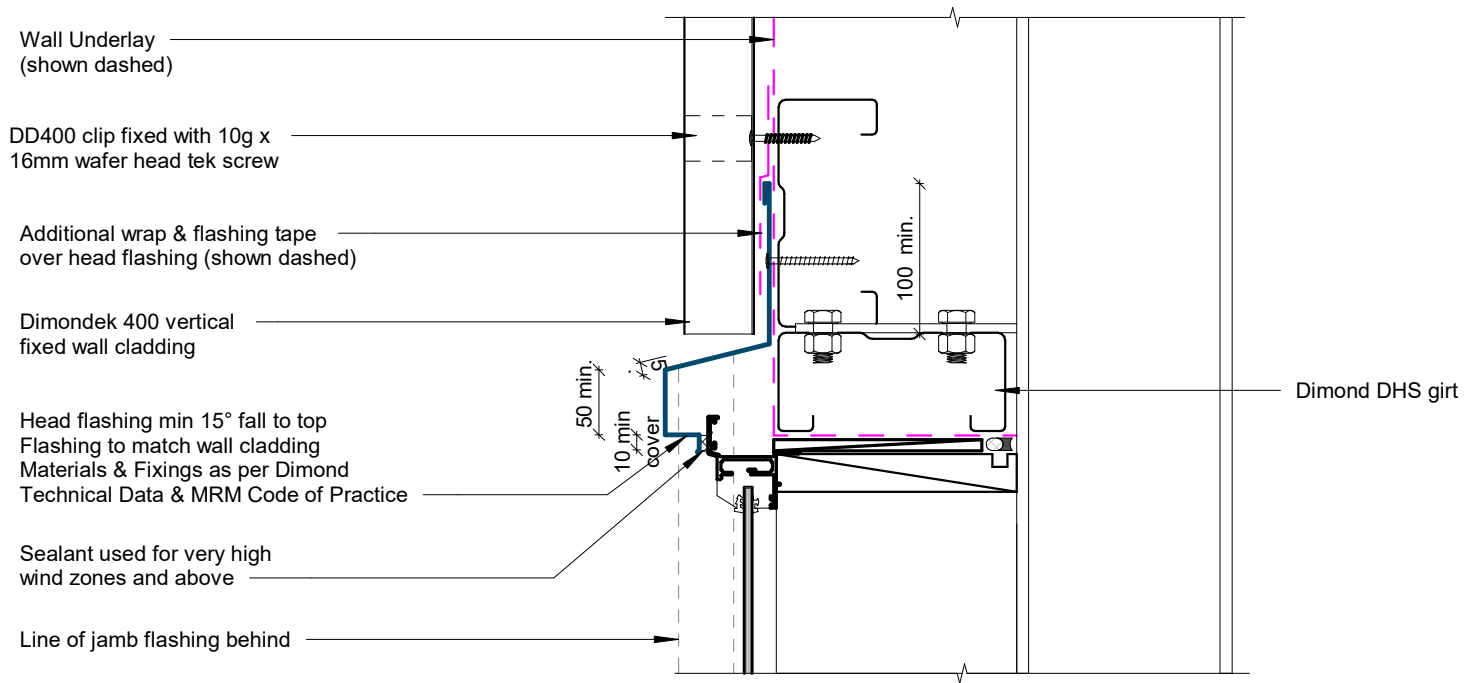
Internal Corner Detail

Rev: 1 **Dimondek 400 Commercial Vertical Cladding**



Base Detail

Rev: 1 **Dimondek 400 Commercial Vertical Cladding**

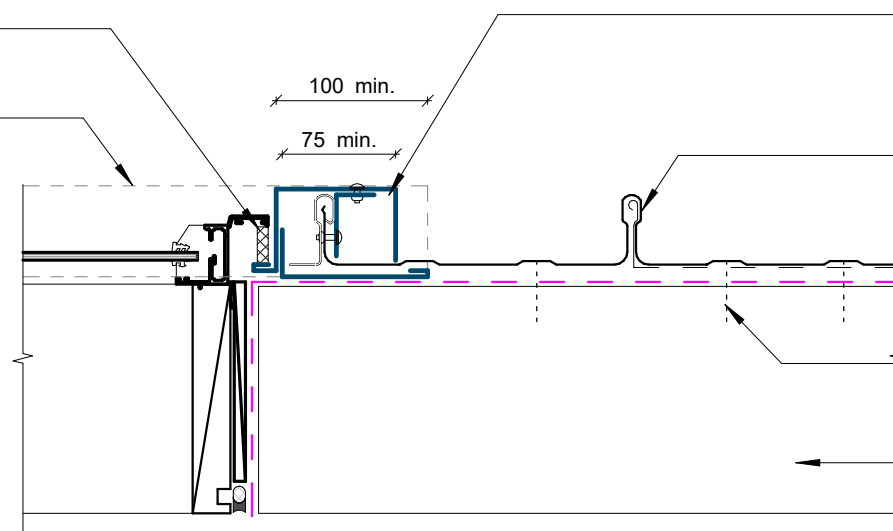


Window / Door Head Detail

Rev: 1 Dimondek 400 Commercial Vertical Cladding

Sealant used for very high
wind zones and above

Line of head flashing over



Flashing to match wall cladding
Materials & Fixings as per Dimond
Technical Data & MRM Code of Practice

Dimondek 400 vertical
fixed wall cladding

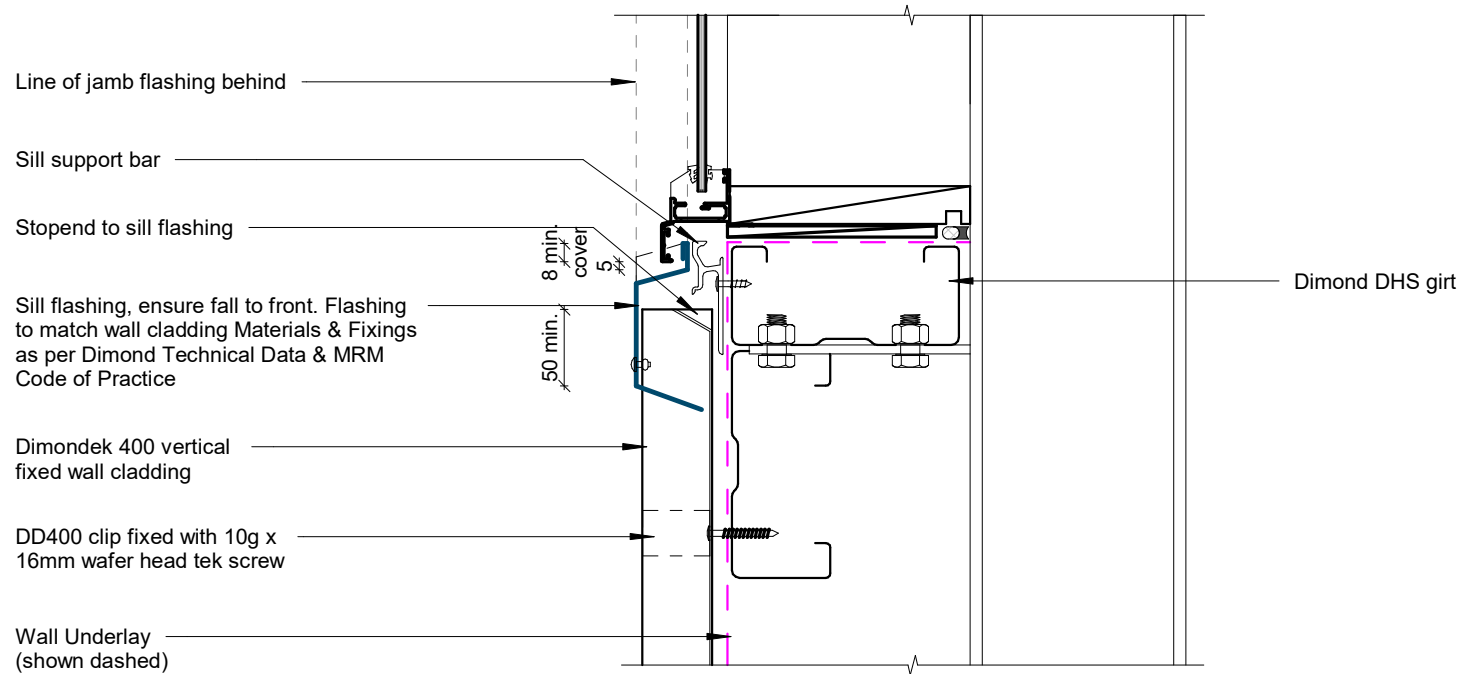
Wall Underlay
(shown dashed)

DD400 clip fixed with 10g x
16mm wafer head tek screw

Dimond DHS girt

Window / Door Jamb Detail

Rev: 1 Dimondek 400 Commercial Vertical Cladding



Window Sill Detail

Rev: 1 Dimondek 400 Commercial Vertical Cladding