

DIMONDEK 400

COMMERCIAL HORIZONTAL WALL CLADDING

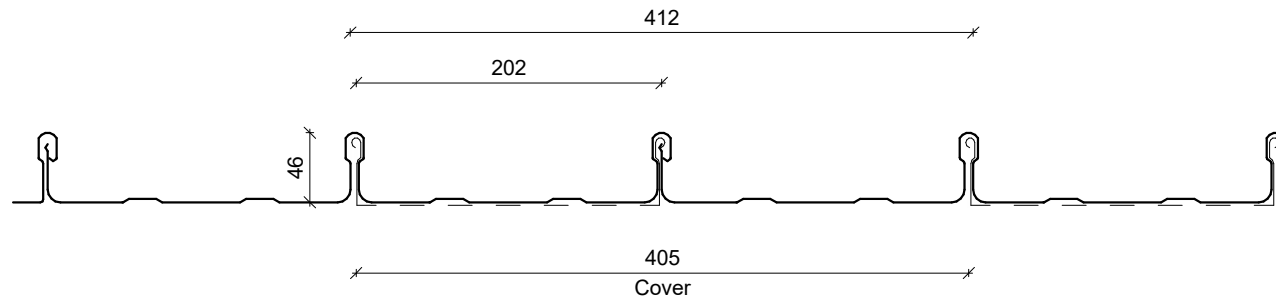
DETAILS:

REV:

DATE:

DD4CHC00	Cover Sheet	1	Oct 2025
DD4CHC01	Profile Summary	1	Oct 2025
DD4CHC02	Typical Flashing Detail	1	Oct 2025
DD4CHC03	Barge Detail	1	Oct 2025
DD4CHC04	Wall to Roof Transverse Detail	1	Oct 2025
DD4CHC05	Wall to Roof Detail	1	Oct 2025
DD4CHC06	Box Gutter Detail	1	Oct 2025
DD4CHC07	Wall to Roof Apex Detail	1	Oct 2025
DD4CHC08	External Corner Detail	1	Oct 2025
DD4CHC09	Internal Corner Detail	1	Oct 2025
DD4CHC10	Base Detail	1	Oct 2025
DD4CHC11	Window / Door Head Detail	1	Oct 2025
DD4CHC12	Window / Door Jamb Detail	1	Oct 2025
DD4CHC13	Window Sill Detail	1	Oct 2025

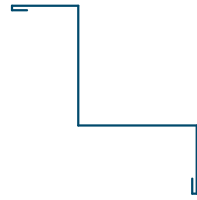
PROFILE OVERVIEW	
RIB TYPE	High
RIBS PER SHEET	3 Ribs per sheet
WIDTH	405mm Cover, 412mm Sheet



Profile Summary



**External Corner /
Barge Flashing**



Internal Corner Flashing



Base Flashing



Eaves Flashing



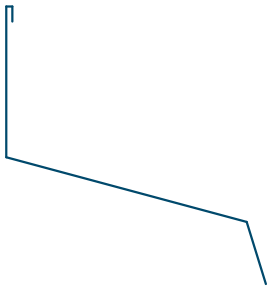
Window Sill Flashing



Window Head Flashing



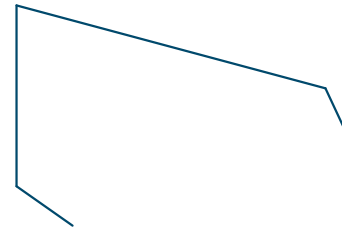
Window Jamb Flashing



Wall to Roof Flashing 1



Wall to Roof Flashing 2



Wall Roof to Wall Apex Flashing

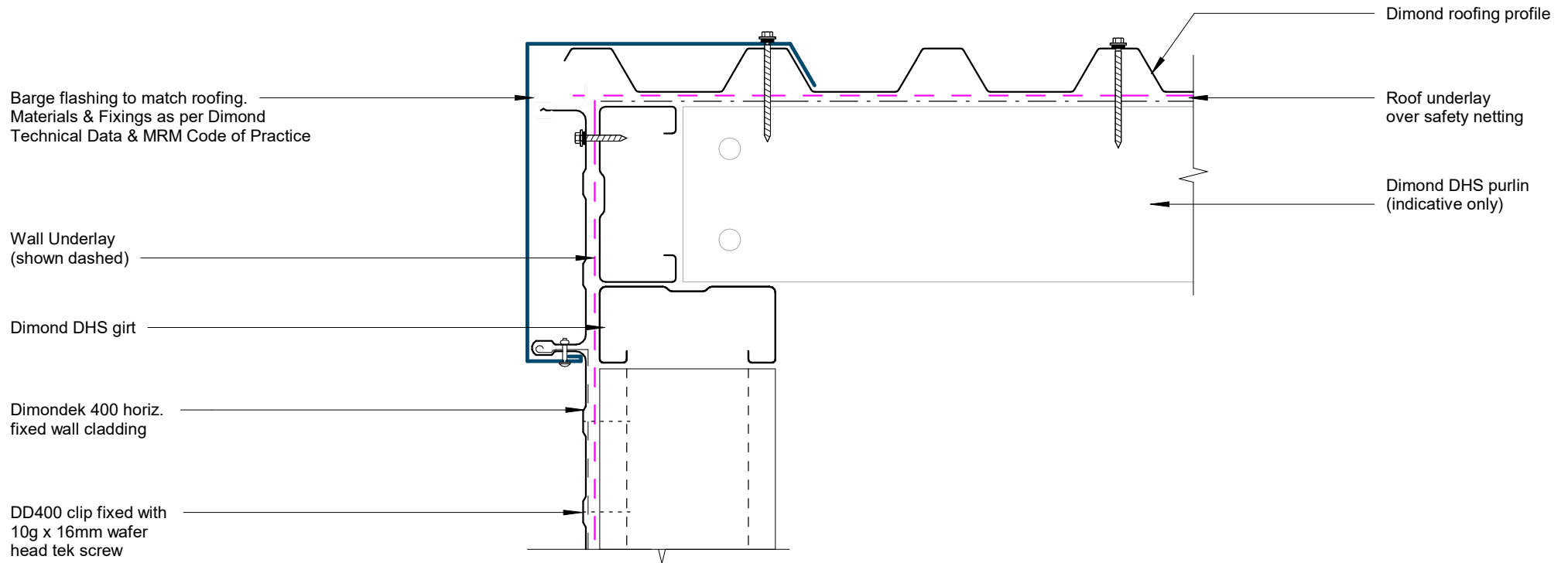
Typical Flashing Detail

Rev: 1 Dimondek 400 Commercial Horizontal Cladding



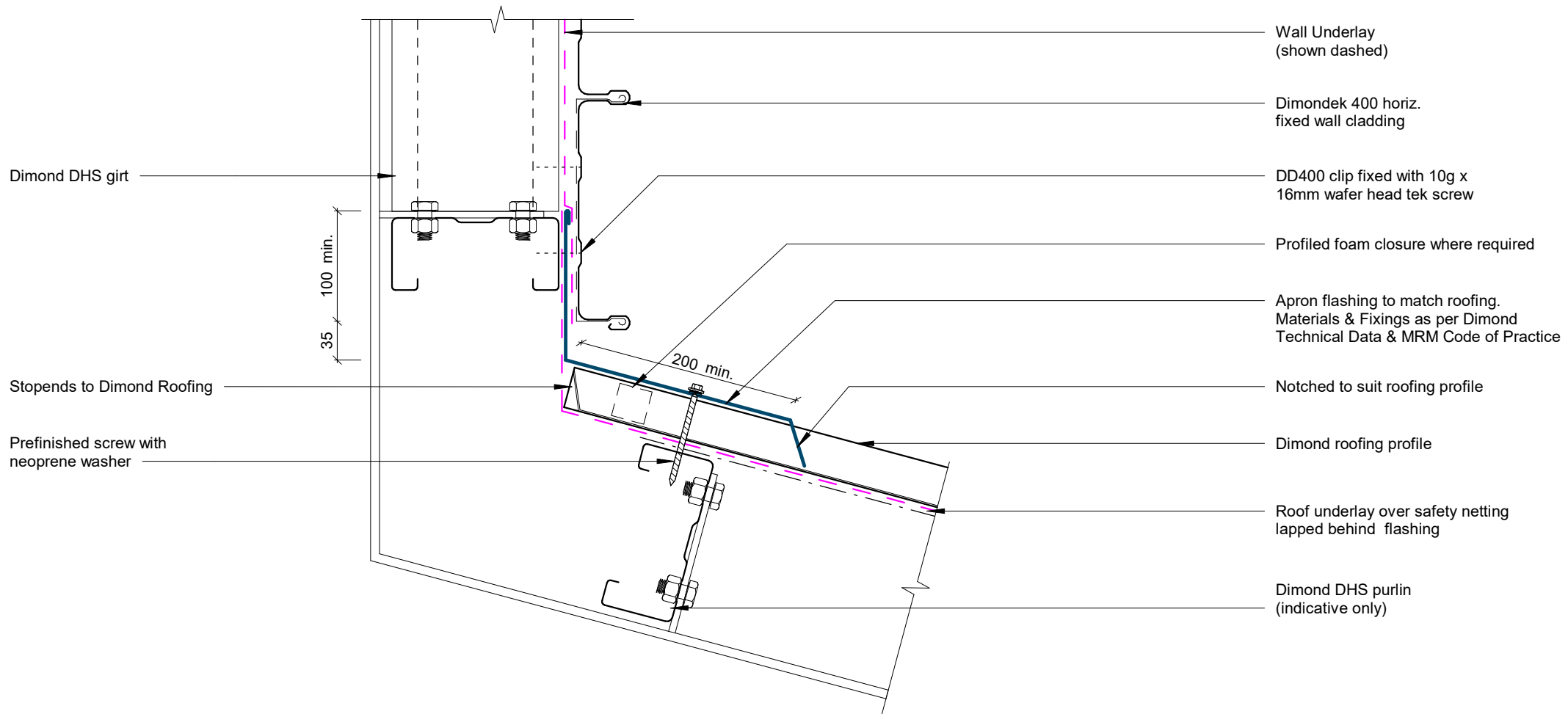
©Dimond 2023, all rights reserved. The information and specifications contained in this document are proprietary to Dimond and may not be used other than for the purpose of designing or building a roof or roofing system solely using products supplied or approved by Dimond ("Permitted Purpose"). You may copy this document solely for the Permitted Purpose, but may not otherwise copy, publish, distribute or modify this document without Dimond's prior written consent. Dimond will not be liable for any use of this document or information and specifications contained in this document, other than for the Permitted Purpose

Date: Oct 2025 Not to scale Sheet: DD4CHC02



Barge Detail

Rev: 1 **Dimondek 400 Commercial Horizontal Cladding**



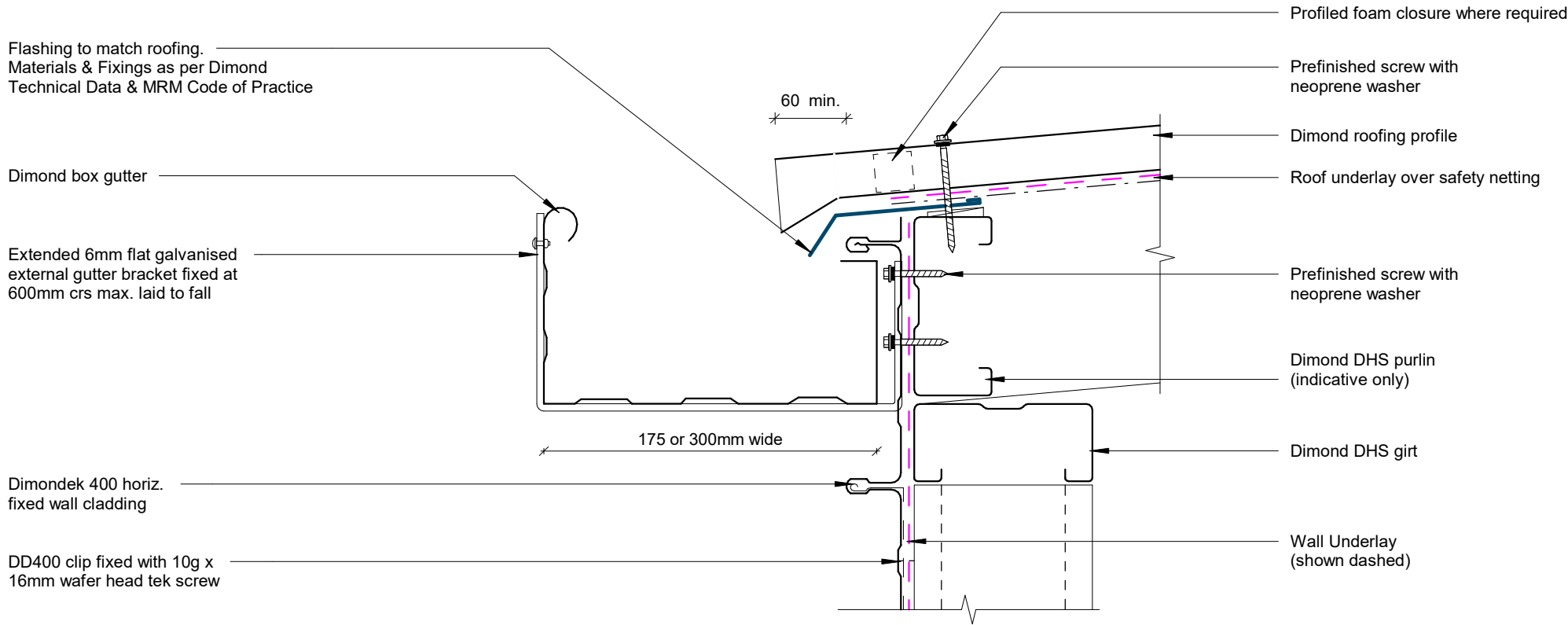
Wall to Roof Transverse Detail

Rev: 1 **Dimondek 400 Commercial Horizontal Cladding**



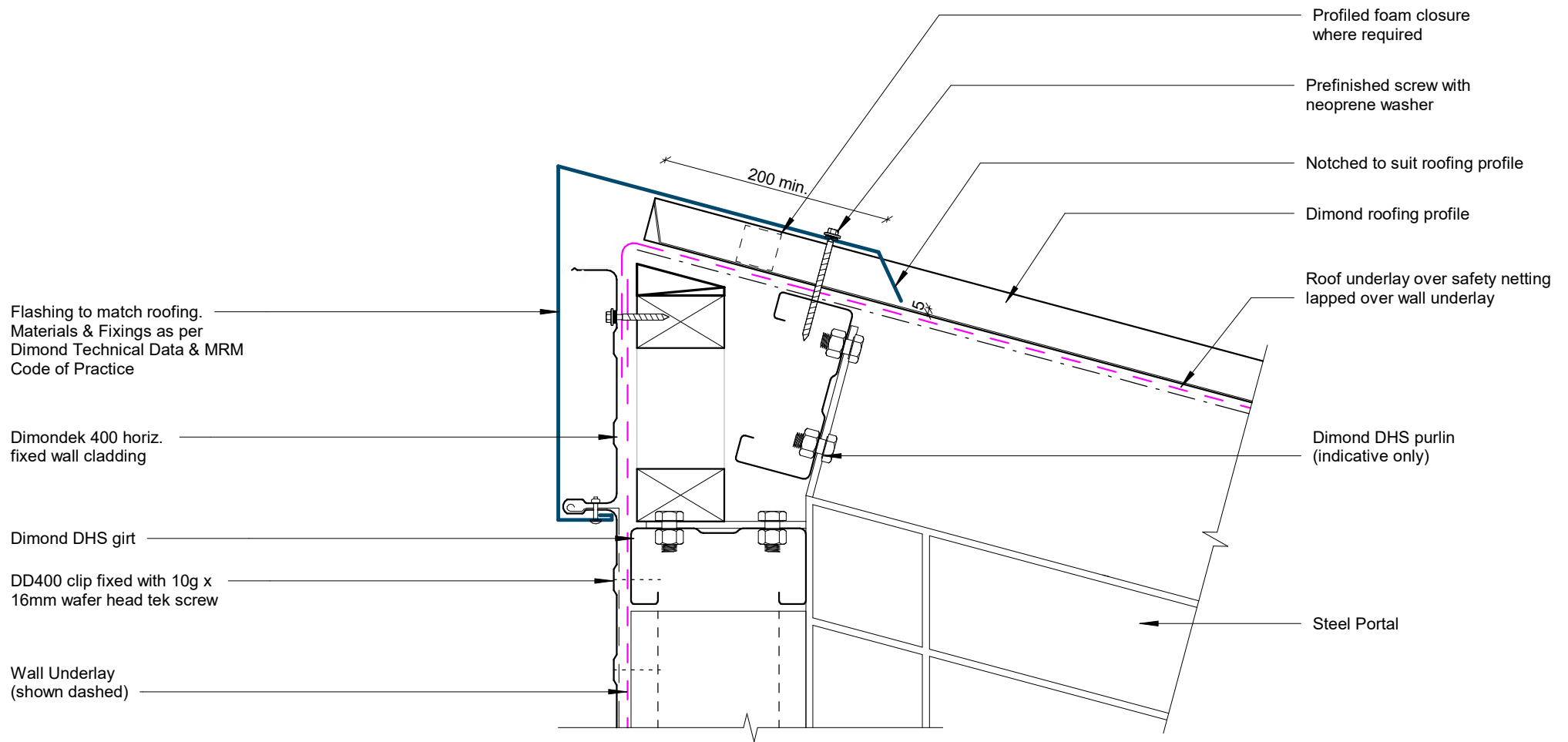
Wall to Roof Detail

Rev: 1 **Dimondek 400 Commercial Horizontal Cladding**



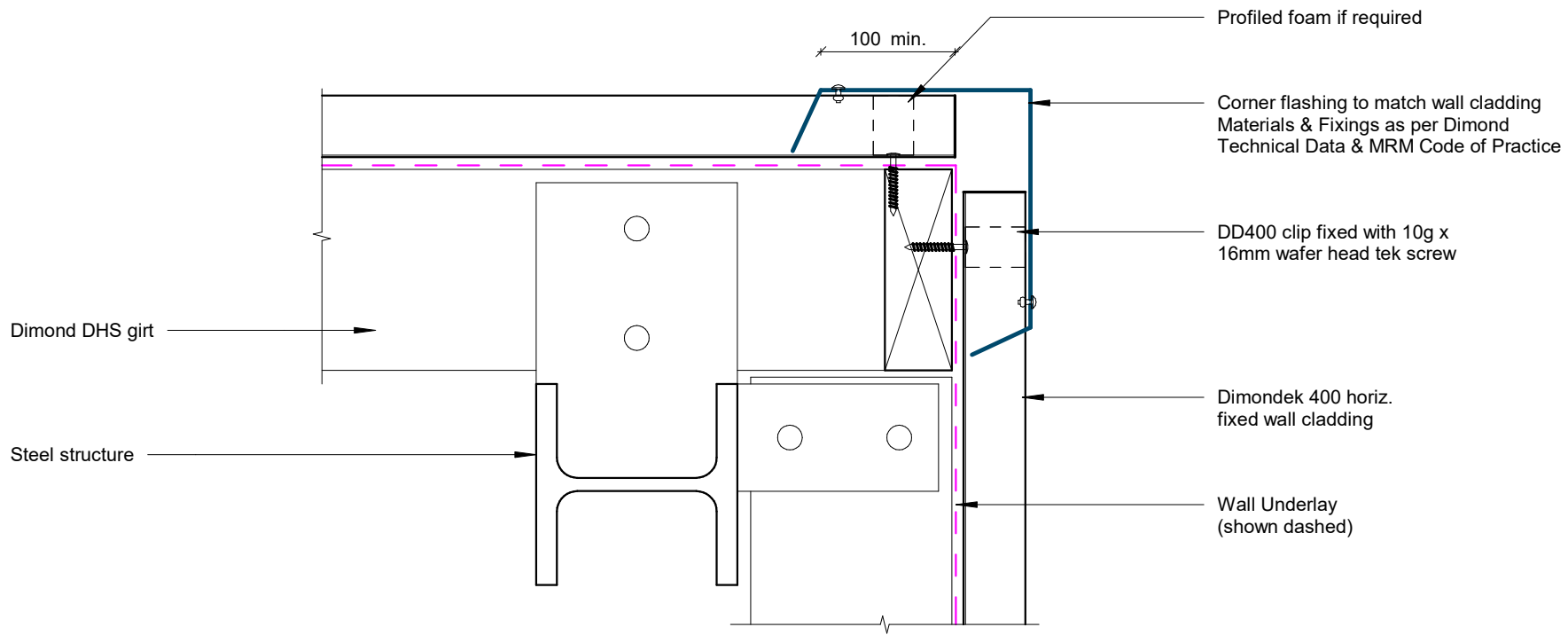
Box Gutter Detail

Rev: 1 Dimondek 400 Commercial Horizontal Cladding



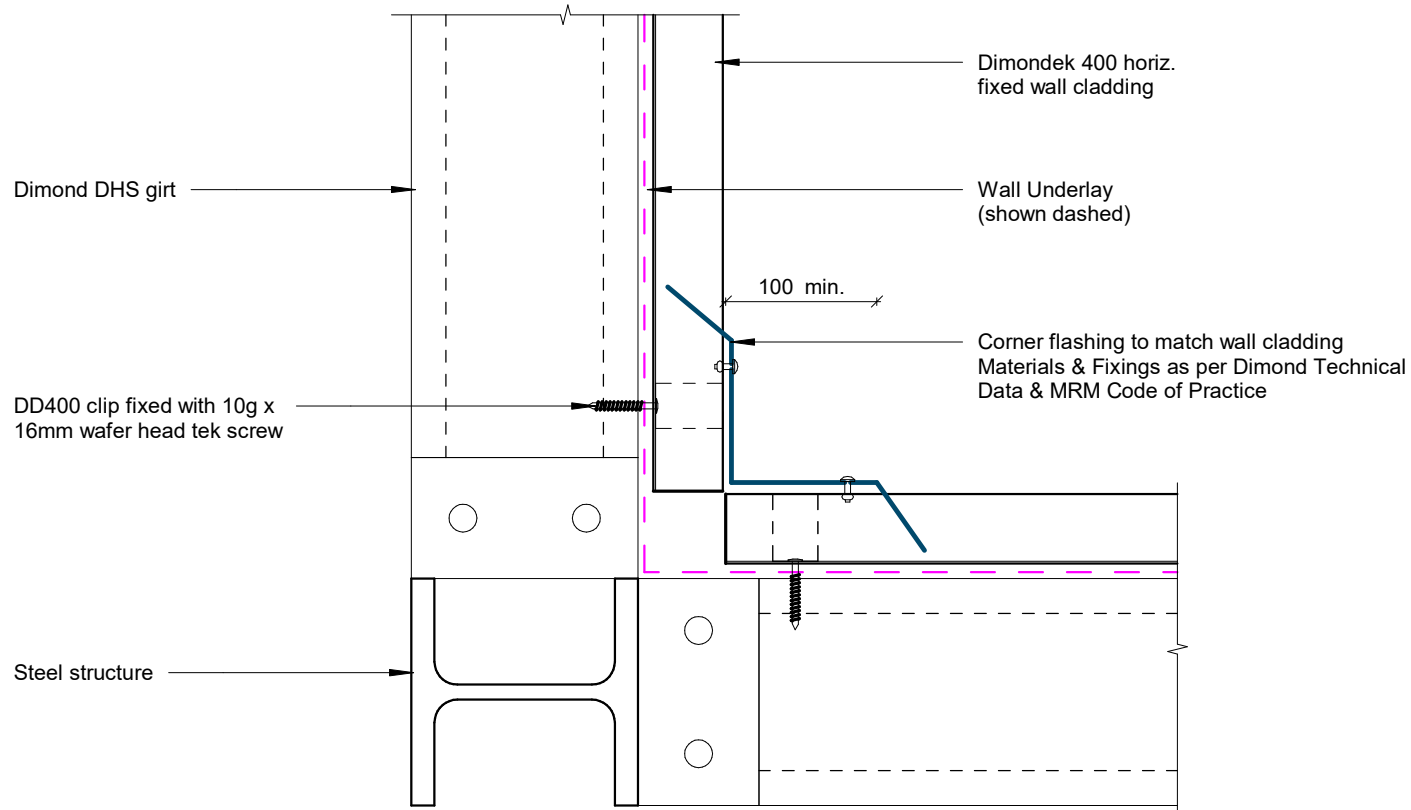
Wall to Roof Apex Detail

Rev: 1 **Dimondek 400 Commercial Horizontal Cladding**



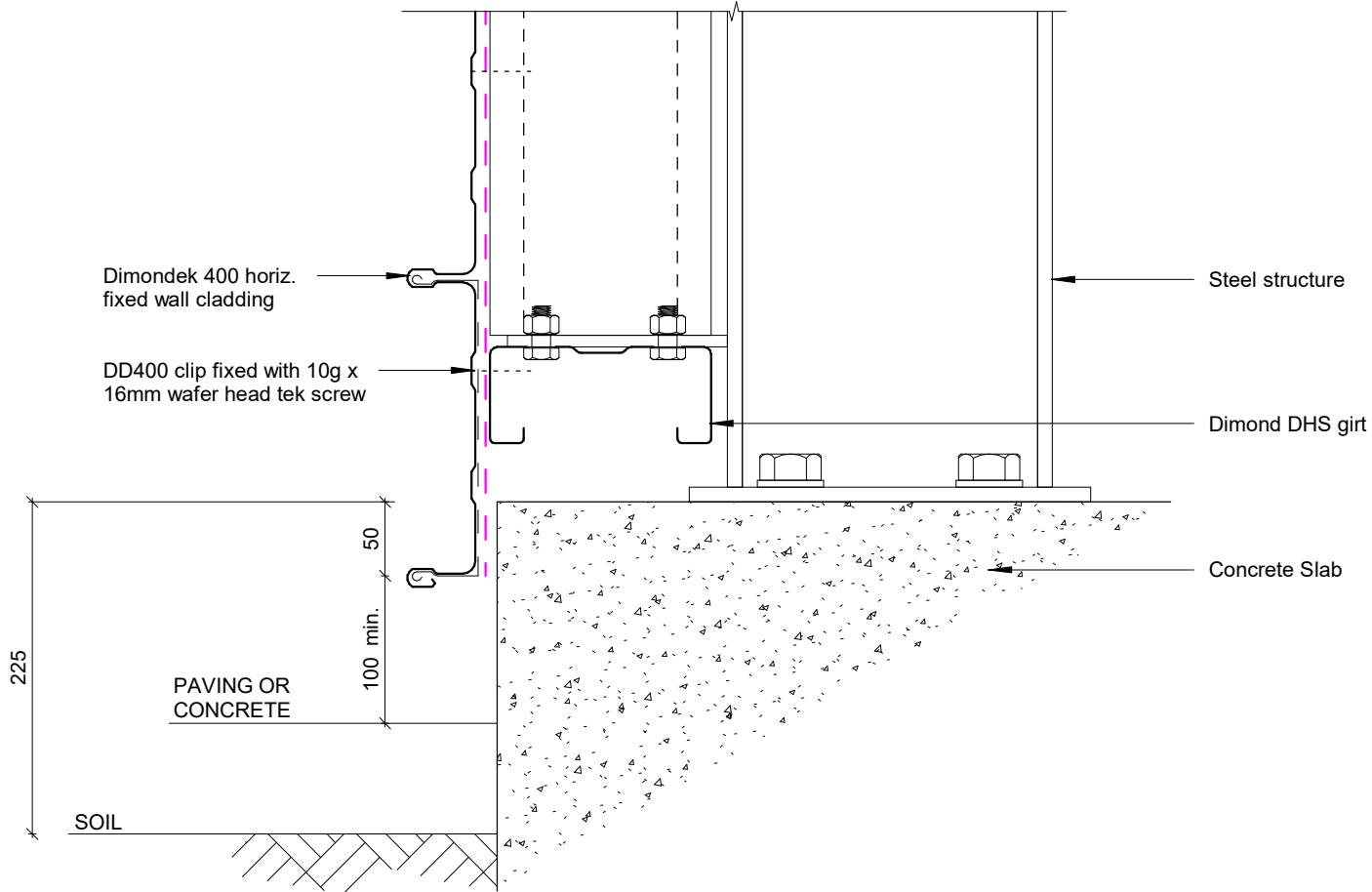
External Corner Detail

Rev: 1 **Dimondek 400 Commercial Horizontal Cladding**



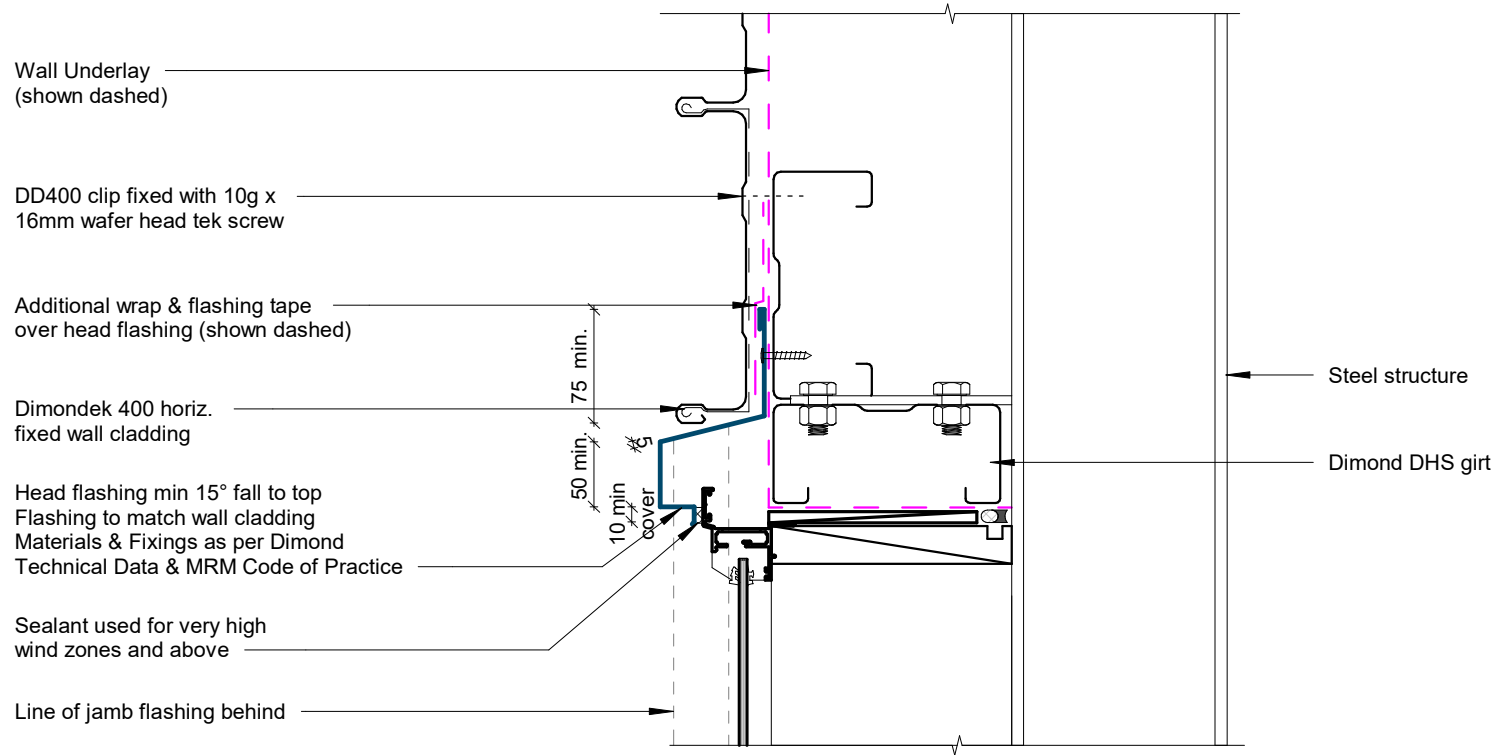
Internal Corner Detail

Rev: 1 **Dimondek 400 Commercial Horizontal Cladding**



Base Detail

Rev: 1 **Dimondek 400 Commercial Horizontal Cladding**

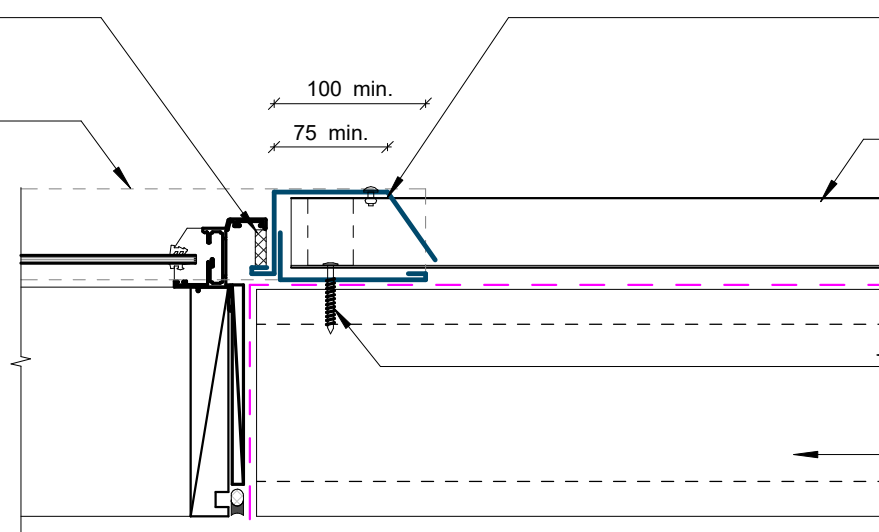


Window / Door Head Detail

Rev: 1 Dimondek 400 Commercial Horizontal Cladding

Sealant used for very high wind zones and above

Line of head flashing over



Flashing to match wall cladding
Materials & Fixings as per Dimond
Technical Data & MRM Code of Practice

Dimondek 400 horiz.
fixed wall cladding

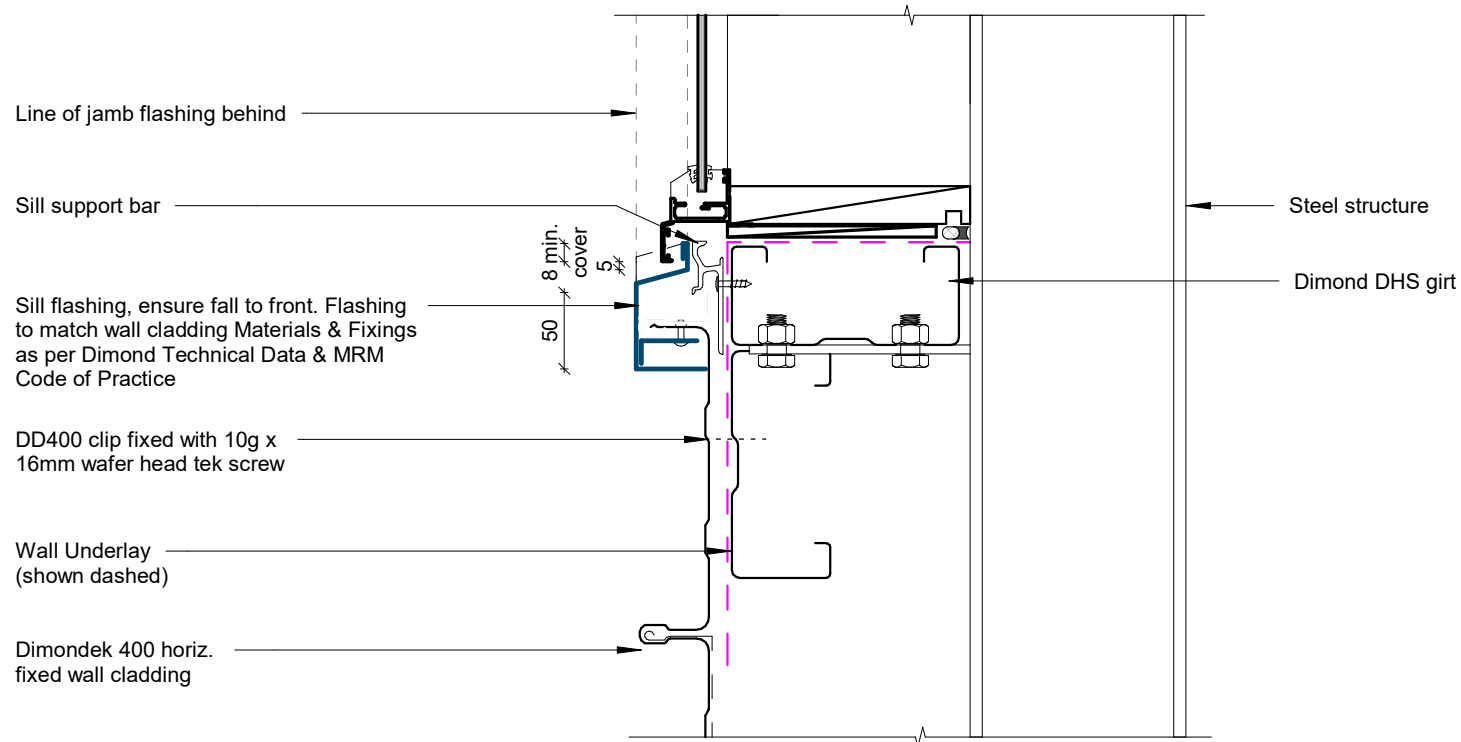
Wall Underlay
(shown dashed)

DD400 clip fixed with 10g x
16mm wafer head tek screw

Dimond DHS girt

Window / Door Jamb Detail

Rev: 1 **Dimondek 400 Commercial Horizontal Cladding**



Window Sill Detail

Rev: 1 Dimondek 400 Commercial Horizontal Cladding