

DP955

RESIDENTIAL HORIZONTAL WALL CLADDING

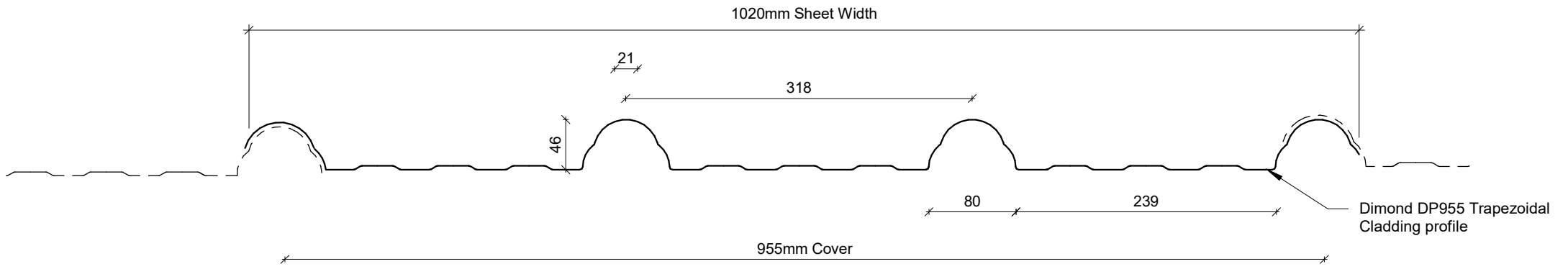
DETAILS:

REV:

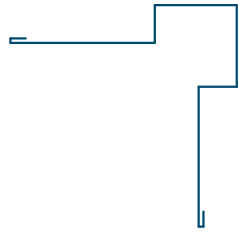
DATE:

DPRHC00	Cover Sheet	1	July 2025
DPRHC01	Profile Summary	1	July 2025
DPRHC02	Typical Flashing Details	1	July 2025
DPRHC03	Barge Flashing Detail	1	July 2025
DPRHC04	External Corner Detail	1	July 2025
DPRHC05	Internal Corner Detail	1	July 2025
DPRHC06	Base Detail	1	July 2025
DPRHC07	Soffit Detail	1	July 2025
DPRHC08	Window/ Door Head Detail	1	July 2025
DPRHC09	Window/ Door Jamb Detail	1	July 2025
DPRHC10	Window Sill Detail	1	July 2025
DPRHC11	Meterbox Head Detail	1	July 2025
DPRHC12	Meterbox Jamb Detail	1	July 2025
DPRHC13	Meterbox Sill Detail	1	July 2025
DPRHC14	Pipe Penetration Detail	1	July 2025
DPRHC15	Cladding to Concrete Junction Detail	1	July 2025
DPRHC16	Cladding to Brick Junction Detail	1	July 2025
DPRHC17	Cladding to Panel Junction Detail	1	July 2025
DPRHC18	3D Window Flashing Detail	1	July 2025

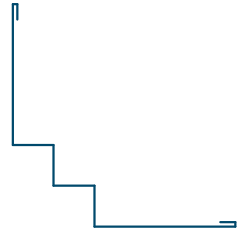
PROFILE OVERVIEW	
MINIMUM PITCH	3°
RIB TYPE	High
RIBS PER SHEET	4 Ribs per sheet
WIDTH	955mm Cover, 1020mm Sheet



Profile Summary



External Corner Flashing



Internal Corner Flashing



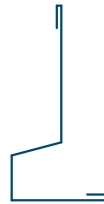
Window Head Flashing



Barge Flashing



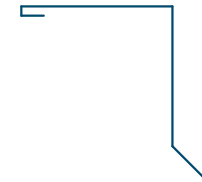
Window Sill Flashing



Base Flashing



Window Jamb Flashing



Soffit Flashing

Typical Flashing Details

Rev: 1 **DP955 Residential Horizontal Cladding**

Barge flashing to match roofing.
Materials & Fixings as per Dimond
Technical Data, E2/AS1 & MRM
Code of Practice

Cavity Batten

Z

Prefinished screw with
neoprene washer

Wall Underlay
(shown dashed)

Roof framing
(indicative only)

Dimond DP955 Horizontal
fixed Wall Cladding profile

Dimond Roofing Profile

Roof Underlay
(shown dashed)

Purlins
(indicative only)

Prefinished screw with
neoprene washer

COVER DIMENSIONS AS PER E2/AS1	Z
SITUATION 1 Low, Medium & High Wind Zones where roof pitch $\geq 10^\circ$ (Excludes any soft edge or turn-down)	50 MIN
SITUATION 2 All roof pitches in Very High zone. Low, Medium & High Wind Zones where roof pitch $\leq 10^\circ$ (Excludes any soft edge or turn-down)	70 MIN
SITUATION 3 All roof pitches in Extra High zone. (Excludes any soft edge or turn-down)	90 MIN

Wall framing
(indicative only)

GENERAL NOTE

Cavity battens or timber framing that contain copper must be separated from steel cladding by a strip of wall or roof underlay or DPC.

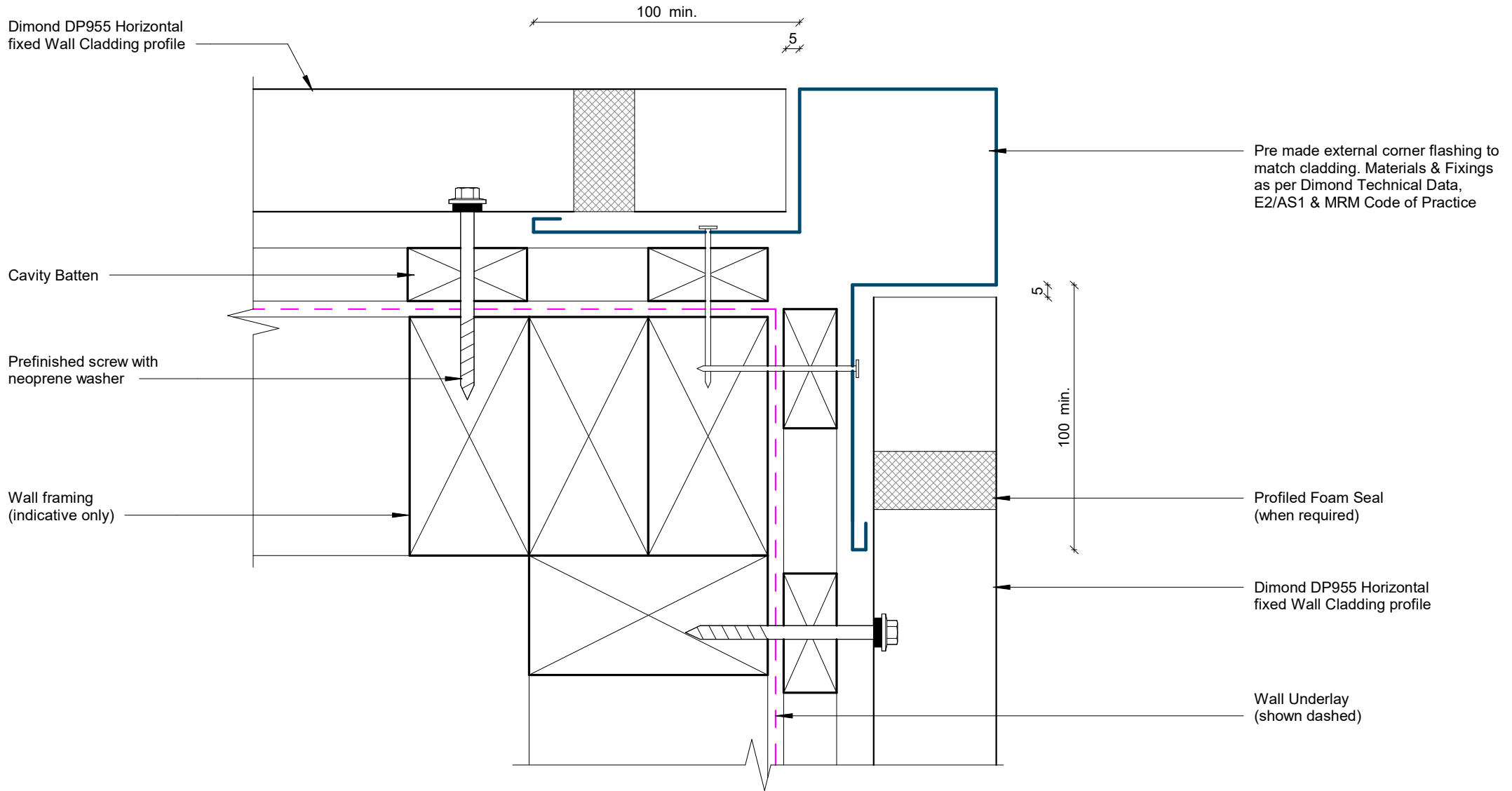
Barge Flashing Detail

Rev: 1 DP955 Residential Horizontal Cladding



©Dimond 2023, all rights reserved. The information and specifications contained in this document are proprietary to Dimond and may not be used other than for the purpose of designing or building a roof or roofing system solely using products supplied or approved by Dimond ("Permitted Purpose"). You may copy this document solely for the Permitted Purpose, but may not otherwise copy, publish, distribute or modify this document without Dimond's prior written consent. Dimond will not be liable for any use of this document or information and specifications contained in this document, other than for the Permitted Purpose

Date: July 2025 Scale: 1 : 2 Sheet: DPRHC03

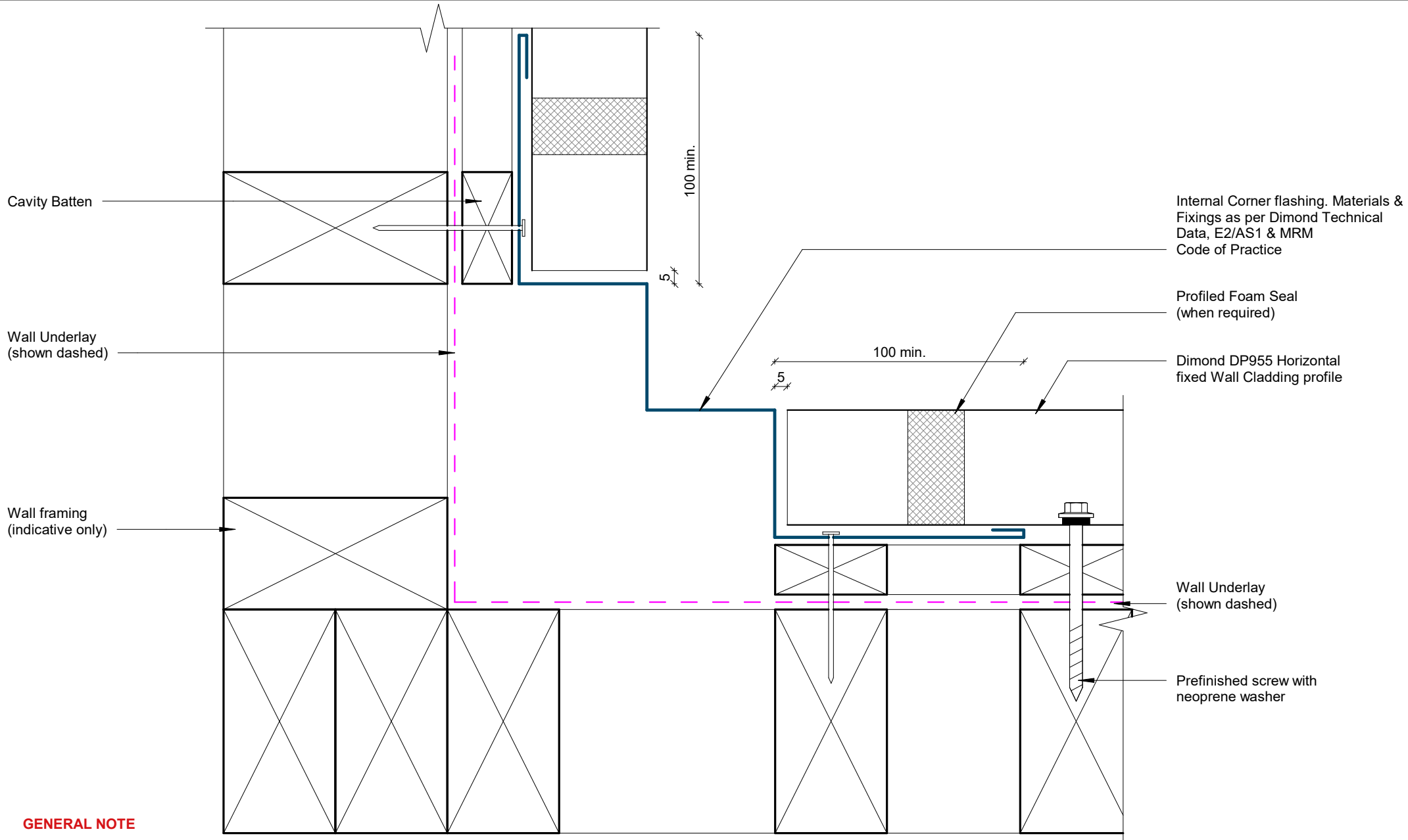


GENERAL NOTE

Cavity battens or timber framing that contain copper must be separated from steel cladding by a strip of wall or roof underlay or DPC.

External Corner Detail

Rev: 1 **DP955 Residential Horizontal Cladding**



GENERAL NOTE

Cavity battens or timber framing that contain copper must be separated from steel cladding by a strip of wall or roof underlay or DPC.

Internal Corner Detail

Rev: 1 **DP955 Residential Horizontal Cladding**



©Dimond 2023, all rights reserved. The information and specifications contained in this document are proprietary to Dimond and may not be used other than for the purpose of designing or building a roof or roofing system solely using products supplied or approved by Dimond ("Permitted Purpose"). You may copy this document solely for the Permitted Purpose, but may not otherwise copy, publish, distribute or modify this document without Dimond's prior written consent. Dimond will not be liable for any use of this document or information and specifications contained in this document, other than for the Permitted Purpose

Date: July 2025 Scale: 1 : 2 Sheet: **DPRHC05**

Prefinished screw with neoprene washer

Dimond DP955 Horizontal fixed Wall Cladding profile

Cavity Batten

Cavity drainage closure strip

Base flashing to match wall cladding Materials & Fixings as per Dimond Technical Data, E2/AS1 & MRM Code of Practice

Wall Underlay (shown dashed)

Wall framing (indicative only)

Concrete Slab (indicative only)

75 min.

Slab

50 min.

Refer Table

SOIL

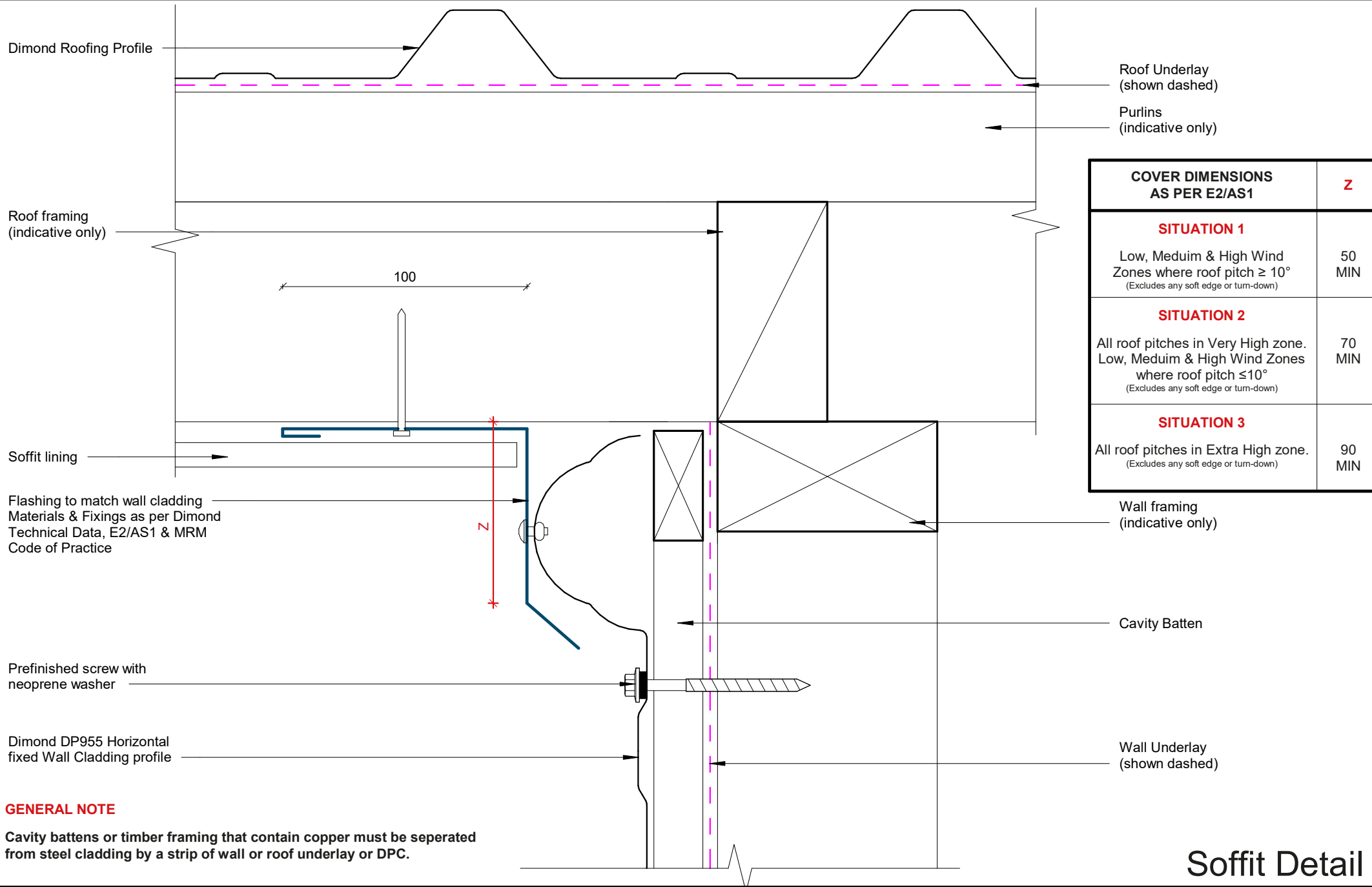
GROUND CLEARANCE NOTE

GROUND CLEARANCE NOTE	
	Application
25mm	Clearance at Garage door
35mm	Sheltered areas or cladding abutting a deck
75mm	Unlined buildings
100mm	Lined buildings and dwellings. Stone chip ground surface
150mm	Kept lawn ground surface
175mm	Pasture ground surface

GENERAL NOTE

Cavity battens or timber framing that contain copper must be separated from steel cladding by a strip of wall or roof underlay or DPC.

Base Detail

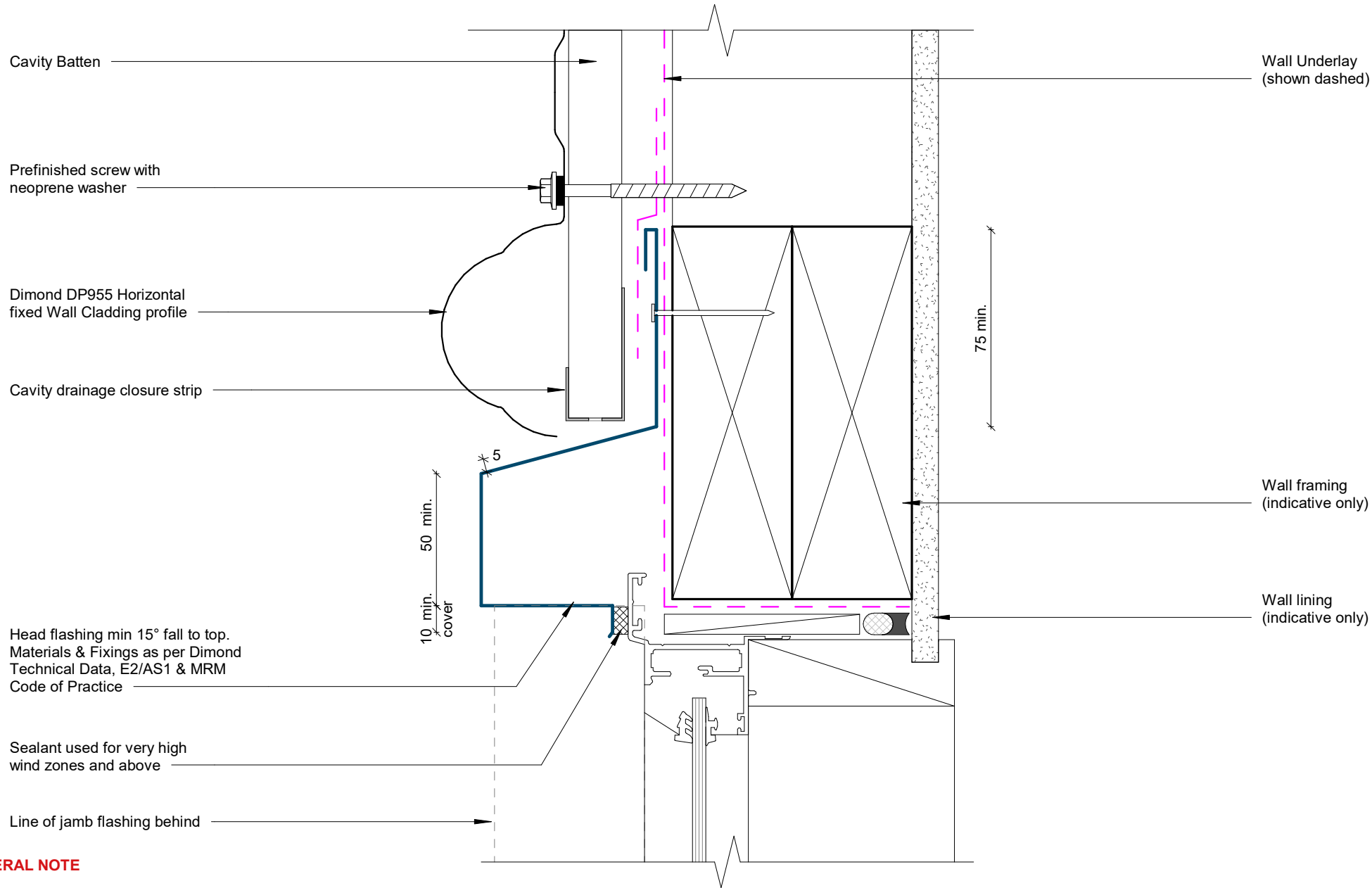


GENERAL NOTE

Cavity battens or timber framing that contain copper must be separated from steel cladding by a strip of wall or roof underlay or DPC.

Soffit Detail

Rev: 1 **DP955 Residential Horizontal Cladding**

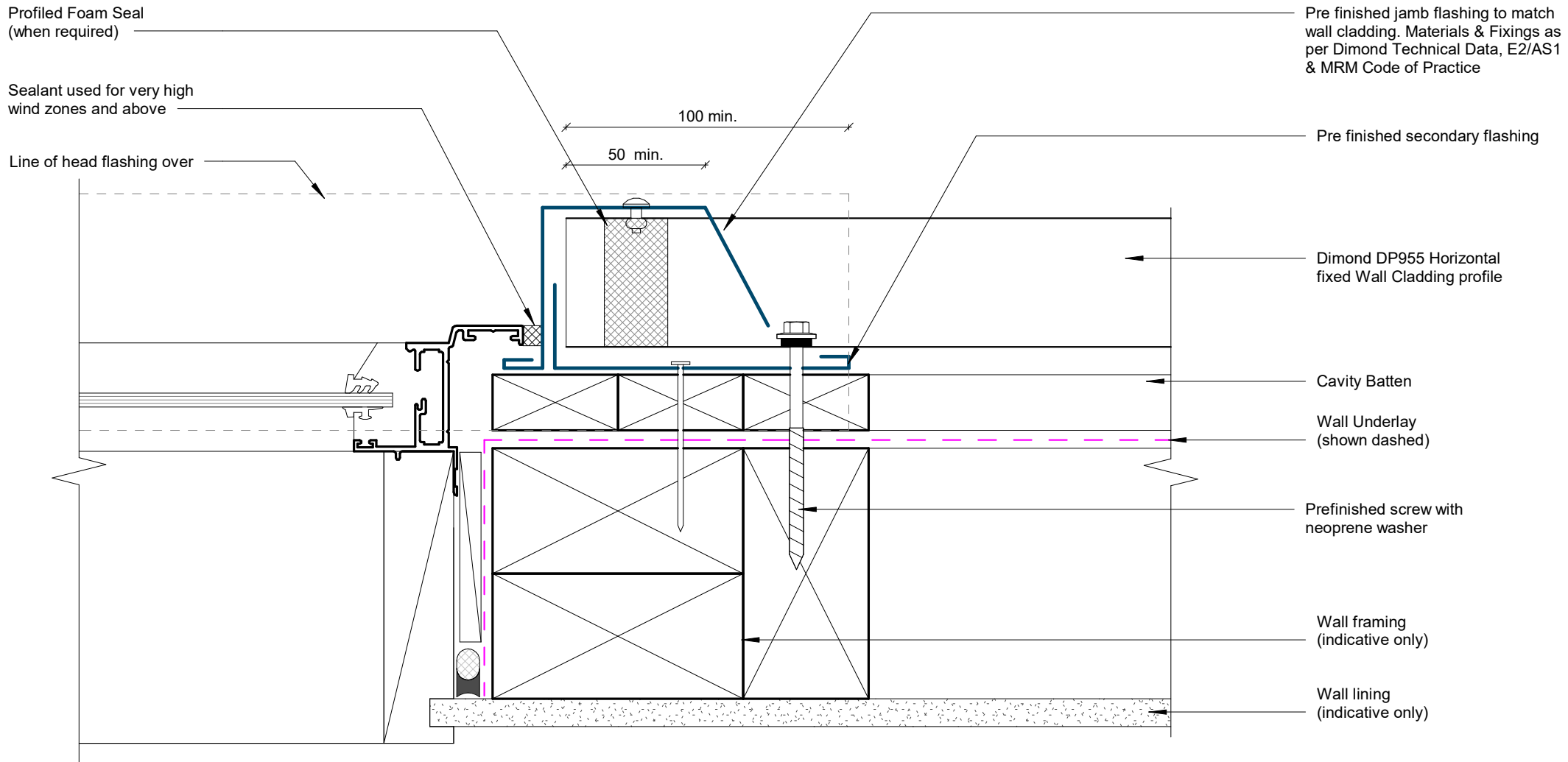


GENERAL NOTE

Cavity battens or timber framing that contain copper must be separated from steel cladding by a strip of wall or roof underlay or DPC.

Window/ Door Head Detail

Rev: 1 **DP955 Residential Horizontal Cladding**



GENERAL NOTE

Cavity battens or timber framing that contain copper must be separated from steel cladding by a strip of wall or roof underlay or DPC.

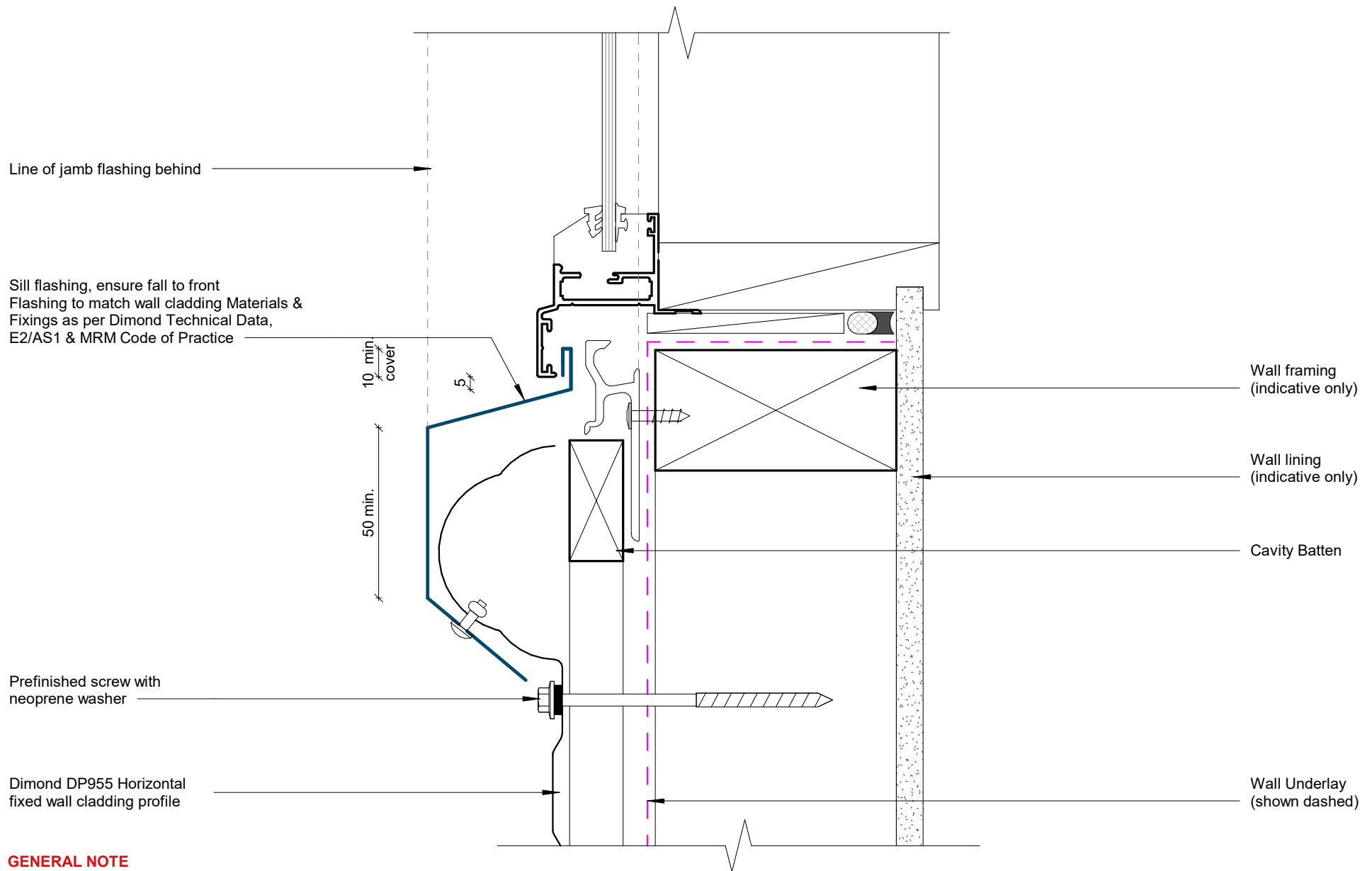
Window/ Door Jamb Detail

Rev: 1 **DP955 Residential Horizontal Cladding**



©Dimond 2023, all rights reserved. The information and specifications contained in this document are proprietary to Dimond and may not be used other than for the purpose of designing or building a roof or roofing system solely using products supplied or approved by Dimond ("Permitted Purpose"). You may copy this document solely for the Permitted Purpose, but may not otherwise copy, publish, distribute or modify this document without Dimond's prior written consent. Dimond will not be liable for any use of this document or information and specifications contained in this document, other than for the Permitted Purpose

Date: July 2025 Scale: 1 : 2 Sheet: **DPRHC09**

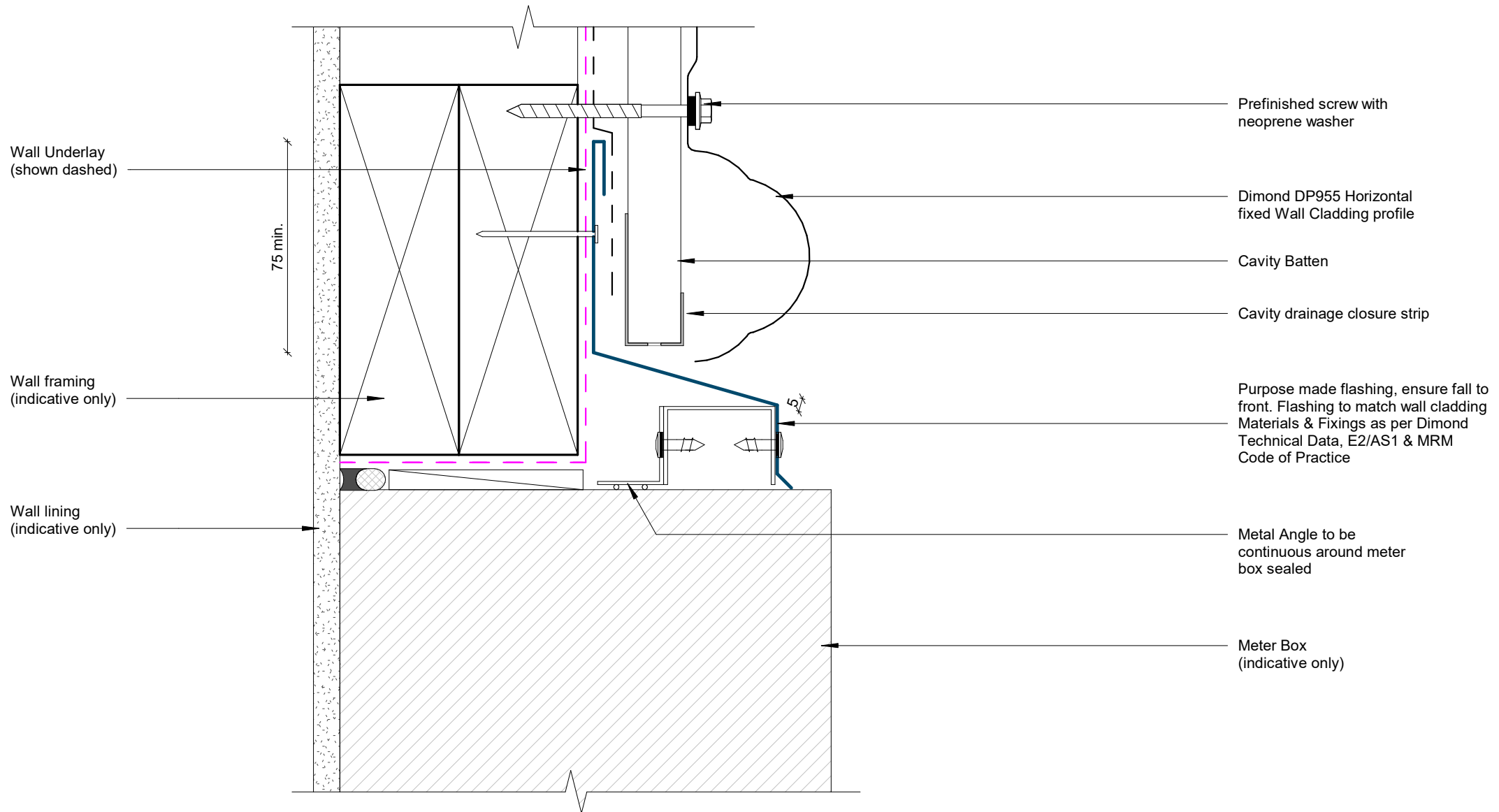


GENERAL NOTE

Cavity battens or timber framing that contain copper must be separated from steel cladding by a strip of wall or roof underlay or DPC.

Window Sill Detail

Rev: 1 DP955 Residential Horizontal Cladding

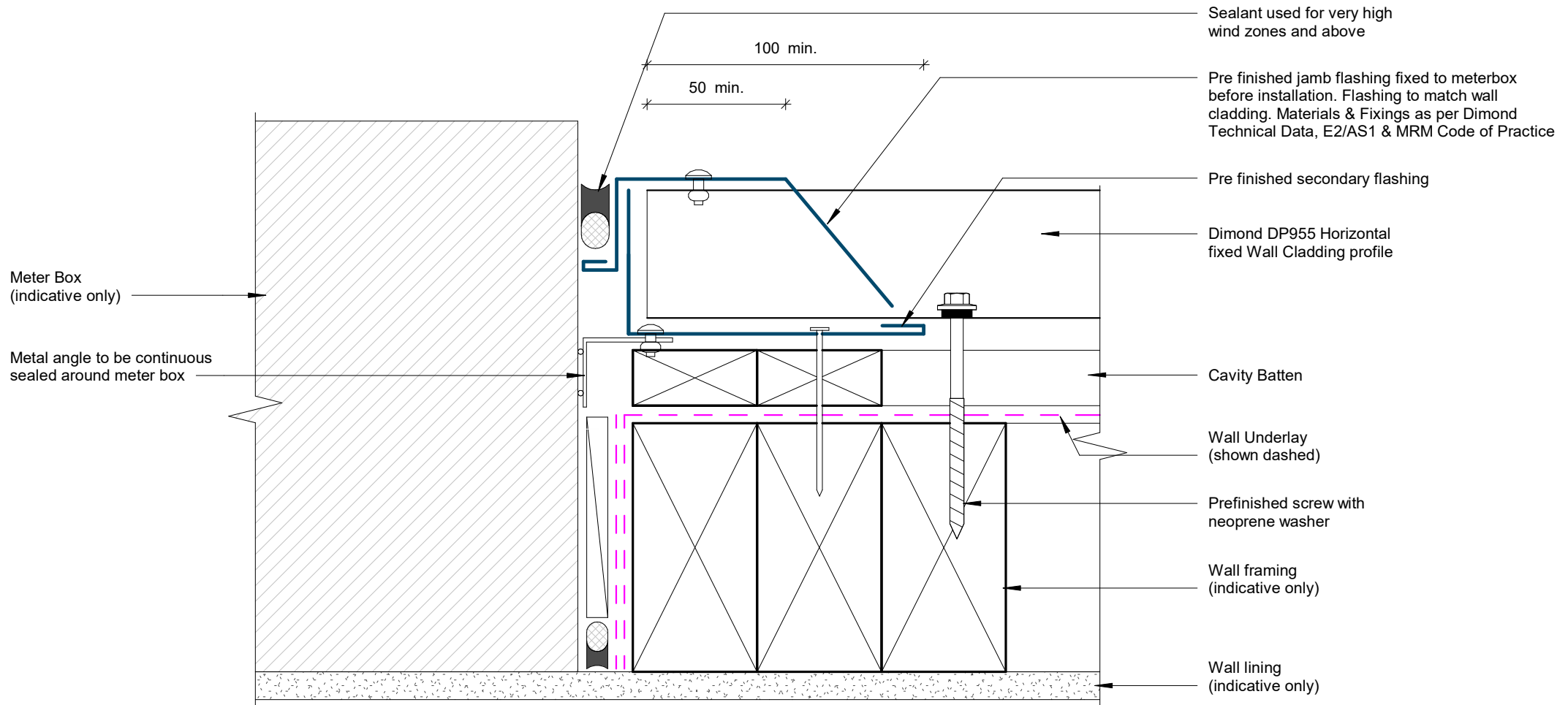


GENERAL NOTE

Cavity battens or timber framing that contain copper must be separated from steel cladding by a strip of wall or roof underlay or DPC.

Meterbox Head Detail

Rev: 1 DP955 Residential Horizontal Cladding



GENERAL NOTE

Cavity battens or timber framing that contain copper must be separated from steel cladding by a strip of wall or roof underlay or DPC.

Meterbox Jamb Detail

Rev: 1 DP955 Residential Horizontal Cladding

Meter Box
(indicative only)

Wall lining
(indicative only)

Air seal
(indicative only)

Cavity Batten

Wall framing
(indicative only)

Wall Underlay
(shown dashed)

Metal Angle to be
continuous around meter
box sealed

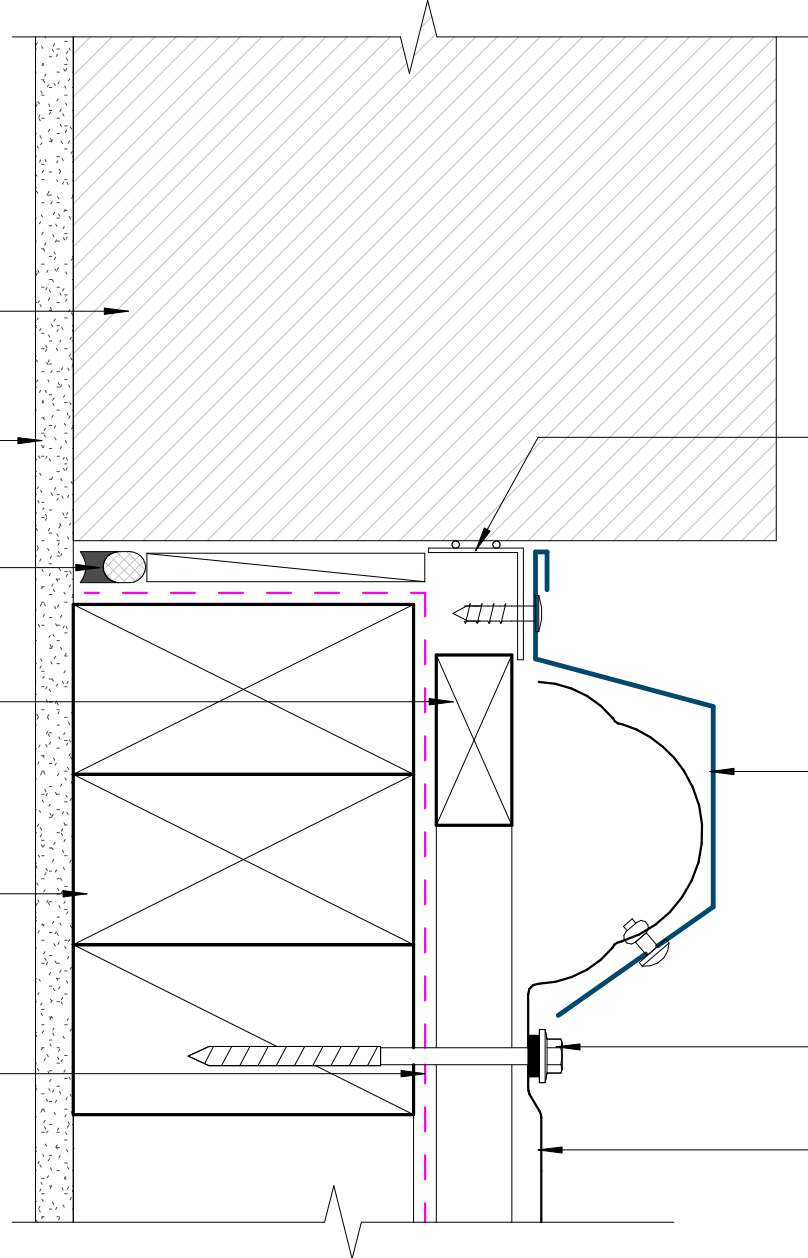
Pre finished flashing, ensure fall to
front. Flashing to match wall cladding
Materials & Fixings as per Dimond
Technical Data, E2/AS1 & MRM
Code of Practice

Prefinished screw with
neoprene washer

Dimond DP955 Horizontal
fixed Wall Cladding profile

GENERAL NOTE

Cavity battens or timber framing that contain copper must be separated from steel cladding by a strip of wall or roof underlay or DPC.



Meterbox Sill Detail

Rev: 1 DP955 Residential Horizontal Cladding

Wall framing
(indicative only)

Solid blocking around penetration
with minimum 75mm overlap to
underlay

Pipe
(indicative only)

Wall lining
(indicative only)

Cavity Batten

Dimond DP955 Horizontal
fixed Wall Cladding profile

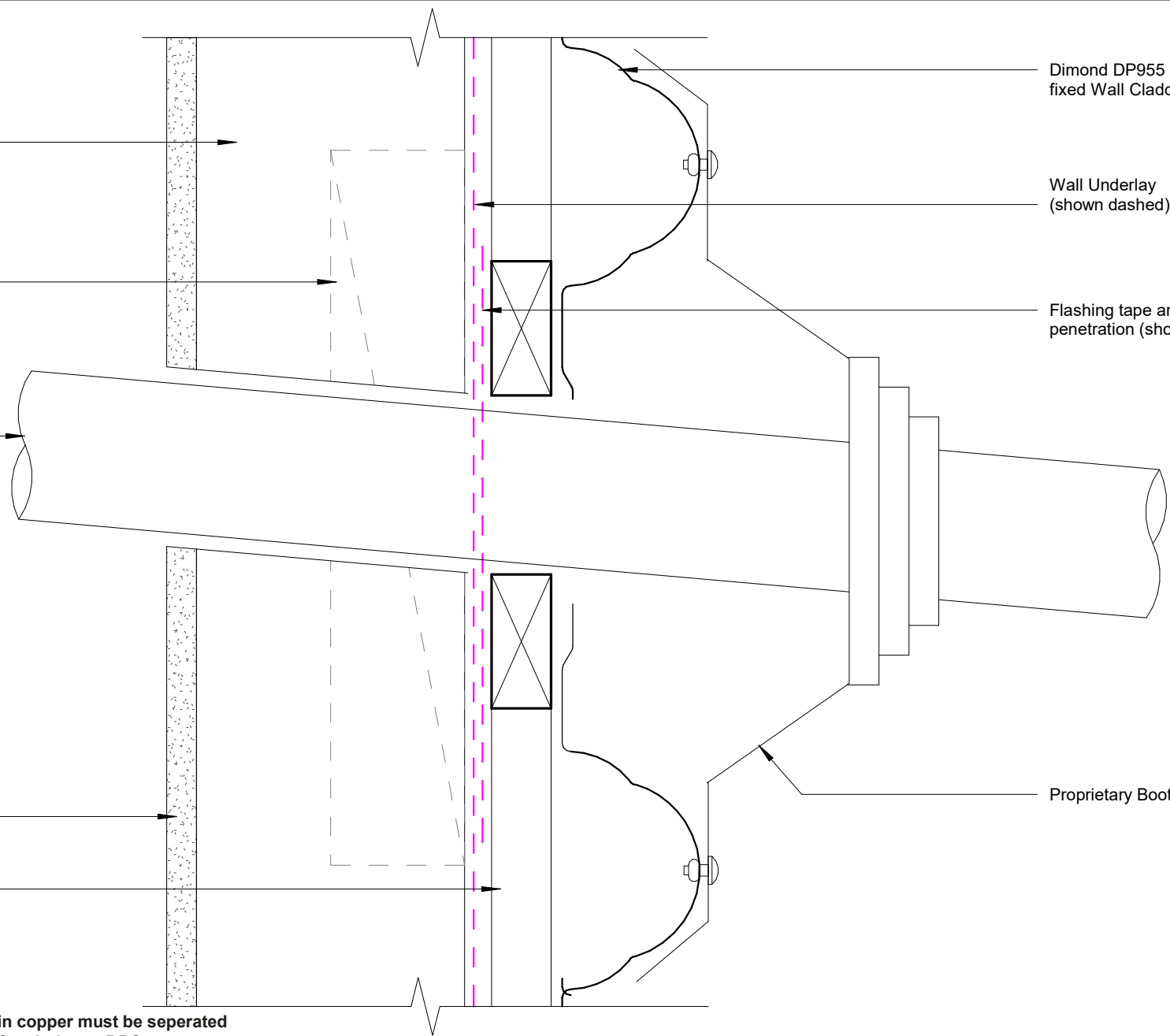
Wall Underlay
(shown dashed)

Flashing tape around pipe
penetration (shown dashed)

Proprietary Boot flashing

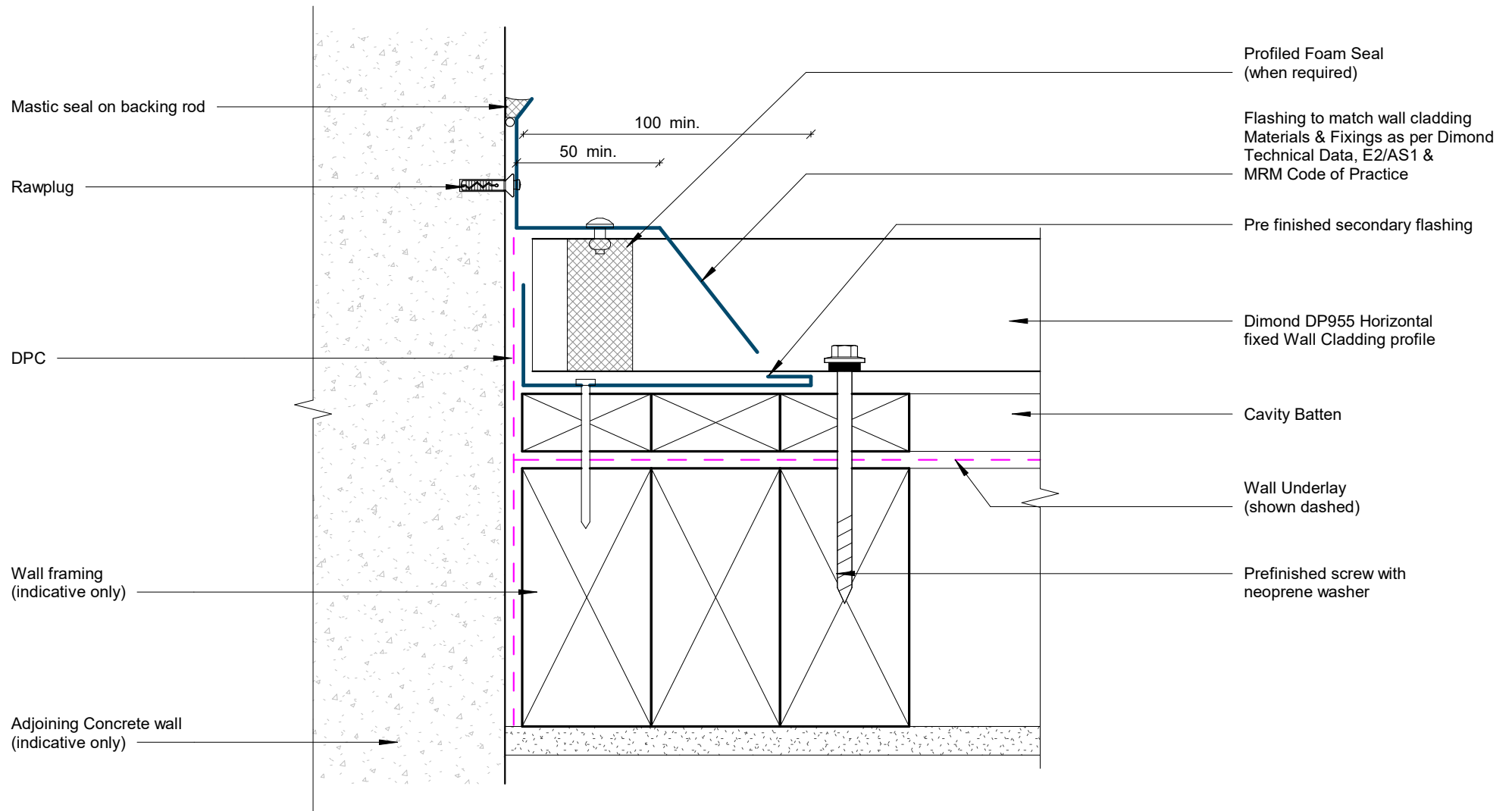
GENERAL NOTE

Cavity battens or timber framing that contain copper must be separated from steel cladding by a strip of wall or roof underlay or DPC.



Pipe Penetration Detail

Rev: 1 DP955 Residential Horizontal Cladding



GENERAL NOTE

Cavity battens or timber framing that contain copper must be separated from steel cladding by a strip of wall or roof underlay or DPC.

Cladding to Concrete Junction Detail

Rev: 1

DP955 Residential Horizontal Cladding

Adjoining Brick veneer on cavity
(indicative only)

Mastic seal on backing rod

Rawplug

Prefinished screw

Wall framing
(indicative only)

Profiled Foam Seal
(when required)

Flashing to match wall cladding
Materials & Fixings as per Dimond
Technical Data, E2/AS1 &
MRM Code of Practice

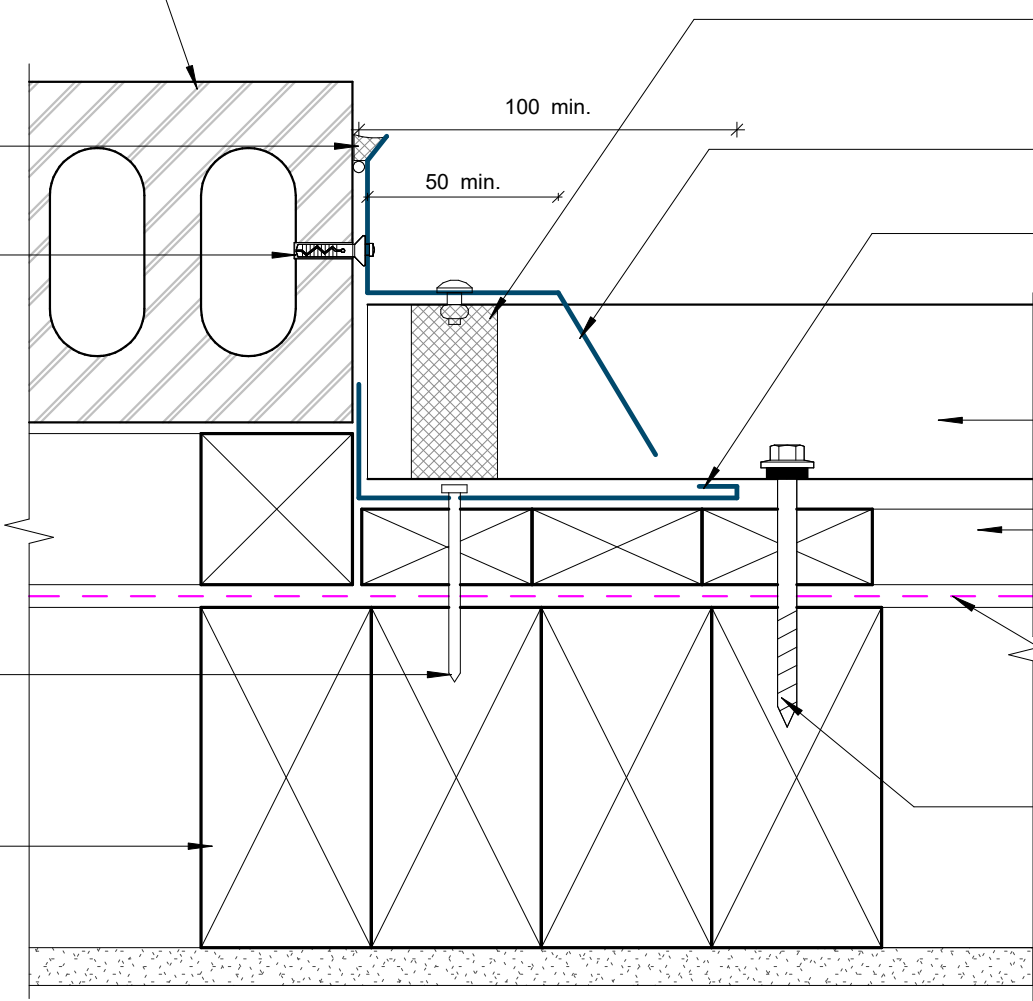
Pre finished secondary flashing

Dimond DP955
Horizontal cladding

Cavity Batten

Wall Underlay
(shown dashed)

Prefinished screw with
neoprene washer



GENERAL NOTE

Cavity battens or timber framing that contain copper must be separated from steel cladding by a strip of wall or roof underlay or DPC.

Cladding to Brick Junction Detail

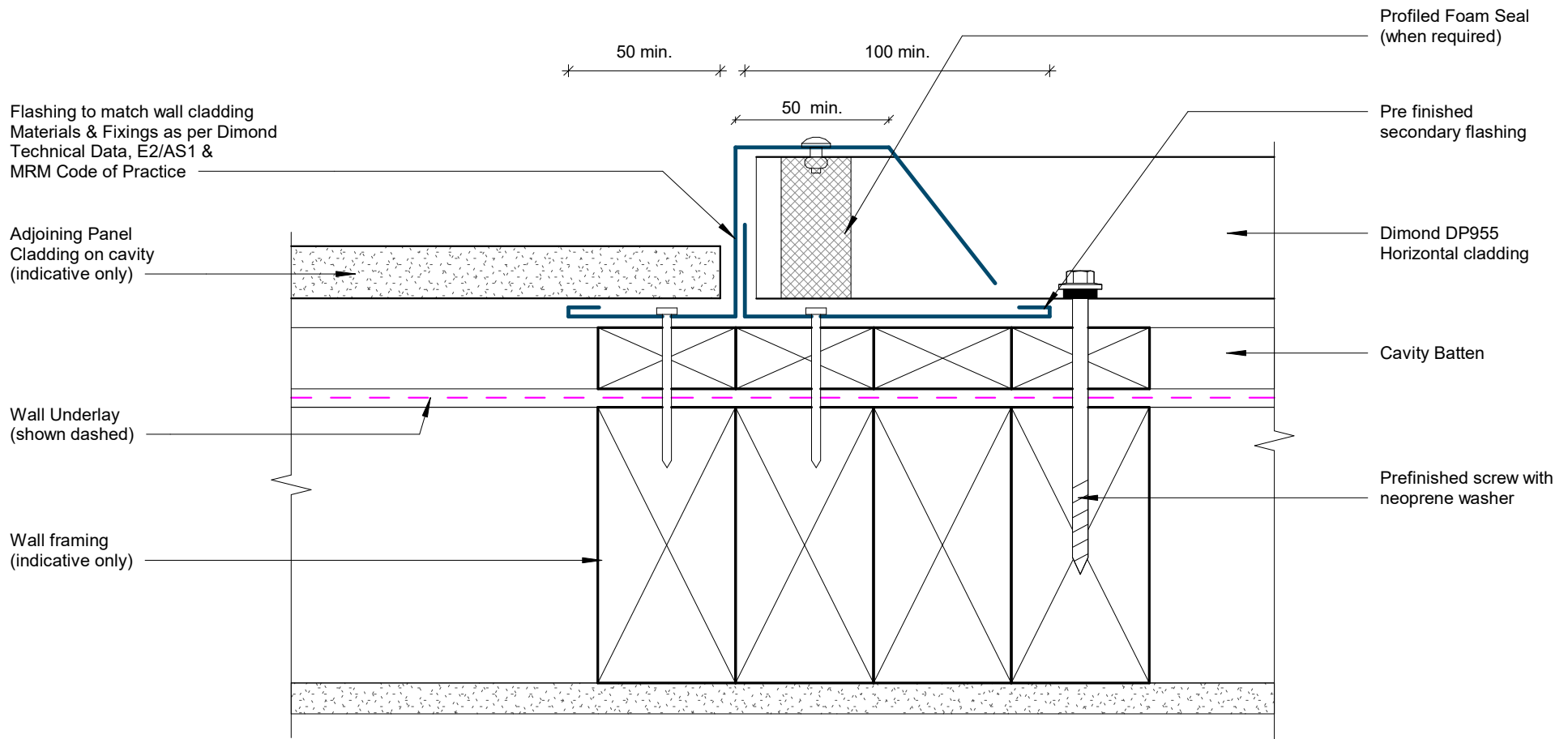
Rev: 1

DP955 Residential Horizontal Cladding



©Dimond 2023, all rights reserved. The information and specifications contained in this document are proprietary to Dimond and may not be used other than for the purpose of designing or building a roof or roofing system solely using products supplied or approved by Dimond ("Permitted Purpose"). You may copy this document solely for the Permitted Purpose, but may not otherwise copy, publish, distribute or modify this document without Dimond's prior written consent. Dimond will not be liable for any use of this document or information and specifications contained in this document, other than for the Permitted Purpose

Date: July 2025 Scale: 1 : 2 Sheet: DPRHC16



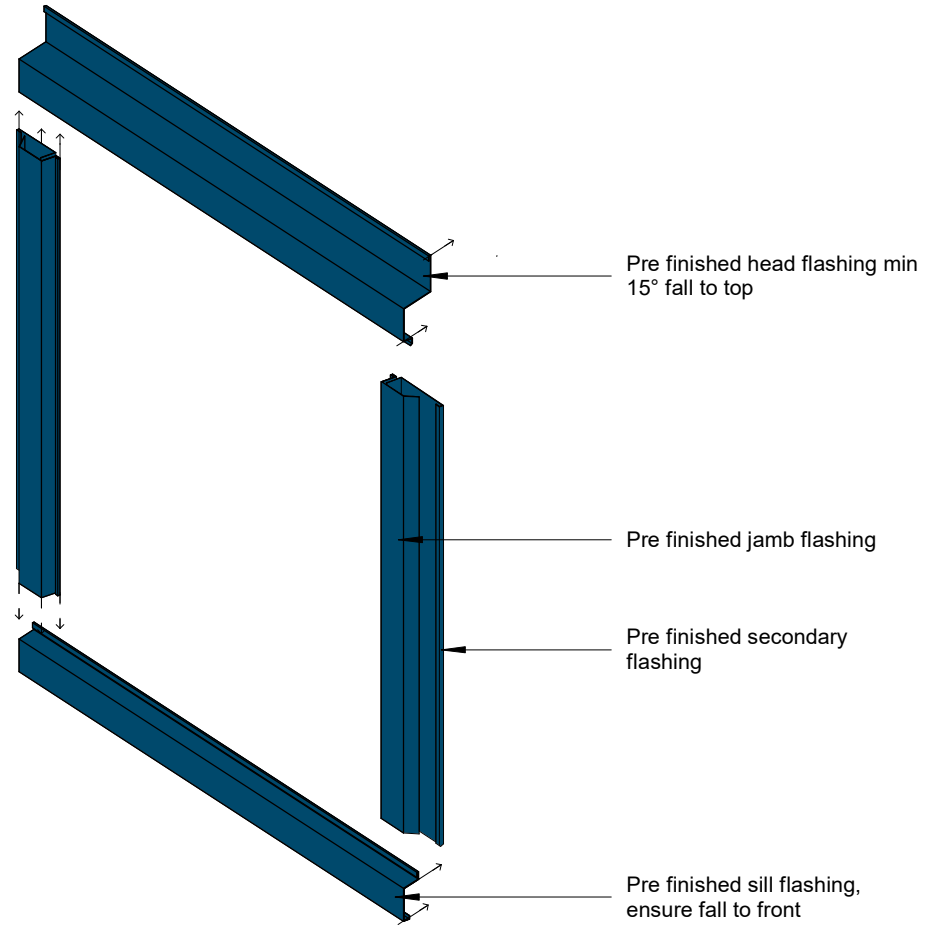
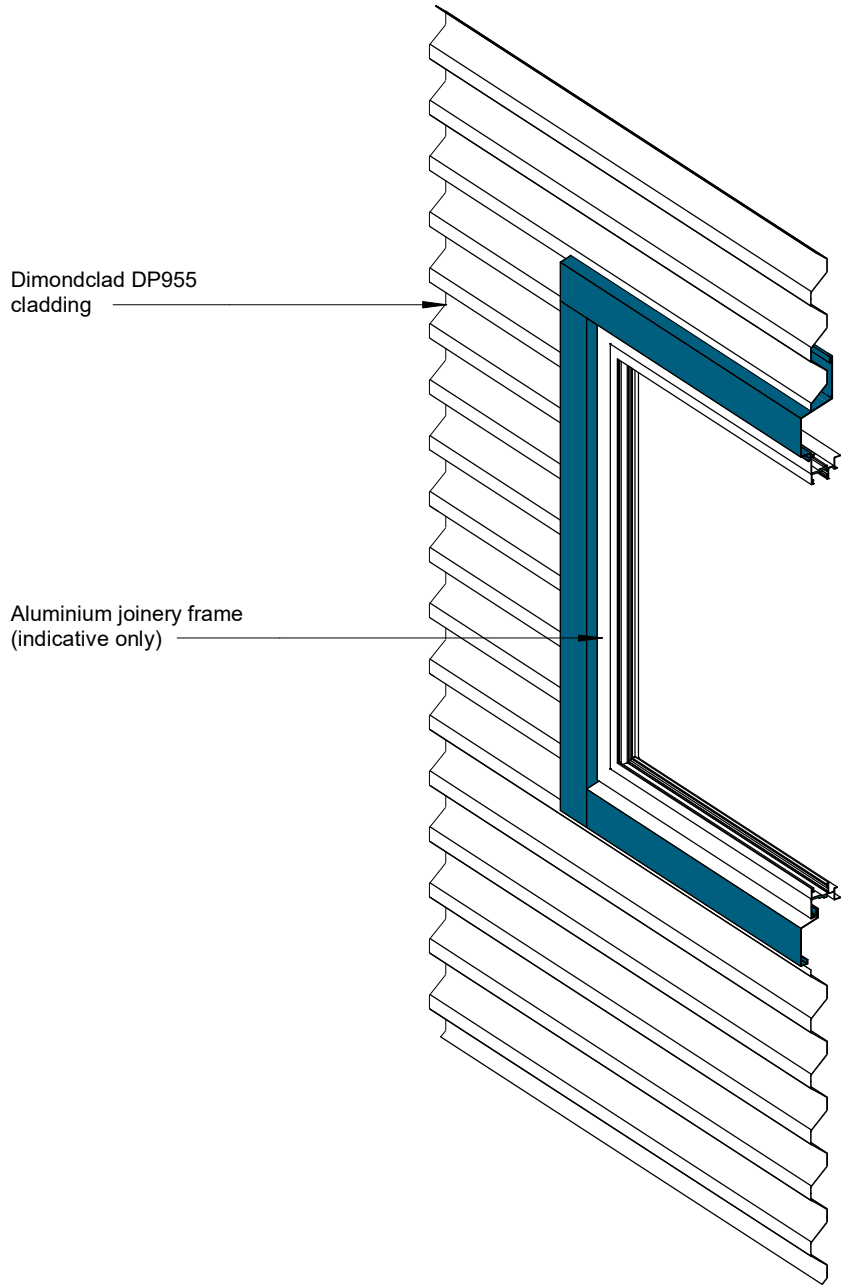
GENERAL NOTE

Cavity battens or timber framing that contain copper must be separated from steel cladding by a strip of wall or roof underlay or DPC.

Cladding to Panel Junction Detail

Rev: 1

DP955 Residential Horizontal Cladding



3D Window Flashing Detail

Rev: 1 DP955 Residential Horizontal Cladding