

DP955

COMMERCIAL HORIZONTAL WALL CLADDING

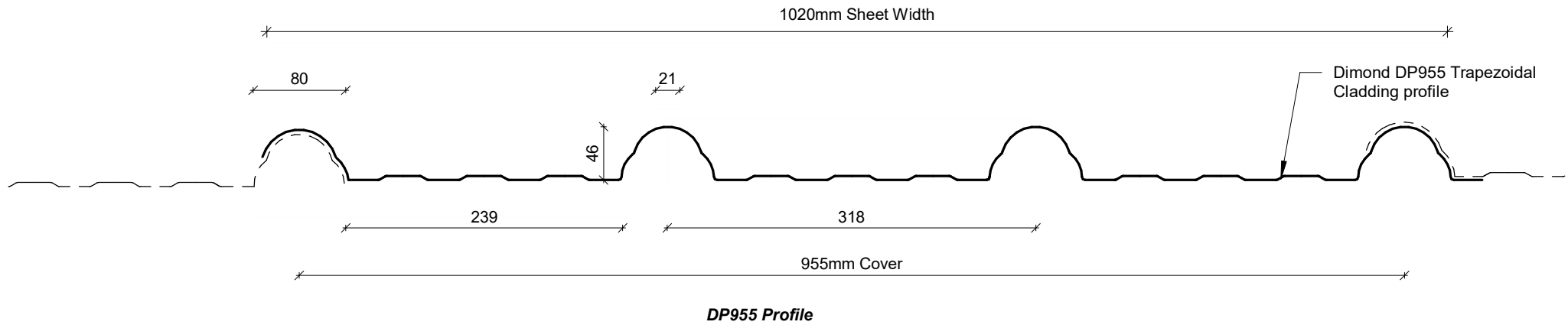
DETAILS:

REV:

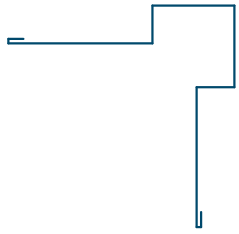
DATE:

DPCHC00	Cover Sheet	1	Oct 2025
DPCHC01	Profile Summary	1	Oct 2025
DPCHC02	Typical Flashing Detail	1	Oct 2025
DPCHC03	Barge Detail	1	Oct 2025
DPCHC04	Wall to Roof Transverse Detail	1	Oct 2025
DPCHC05	Wall to Roof Detail	1	Oct 2025
DPCHC06	Box Gutter Detail	1	Oct 2025
DPCHC07	Wall to Roof Apex Detail	1	Oct 2025
DPCHC08	External Corner Detail	1	Oct 2025
DPCHC09	Internal Corner Detail	1	Oct 2025
DPCHC10	Base Detail	1	Oct 2025
DPCHC11	Window / Door Head Detail	1	Oct 2025
DPCHC12	Window / Door Jamb Detail	1	Oct 2025
DPCHC13	Window Sill Detail	1	Oct 2025

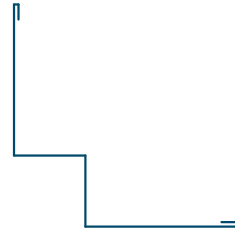
PROFILE OVERVIEW	
RIB TYPE	High
RIBS PER SHEET	4 Ribs per sheet
WIDTH	955mm Cover, 1020mm Sheet



Profile Summary



External Corner Flashing



Internal Corner Flashing



Base Flashing



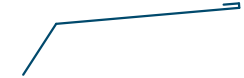
Window Sill Flashing



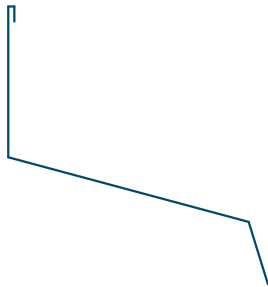
Window Head Flashing



Window Jamb Flashing



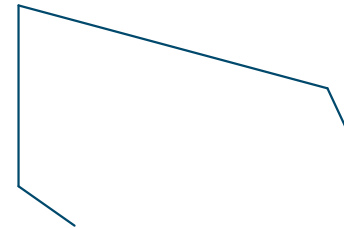
Eaves Flashing



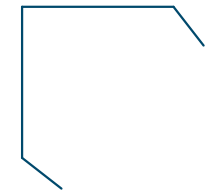
Wall to Roof Flashing 1



Wall to Roof Flashing 2

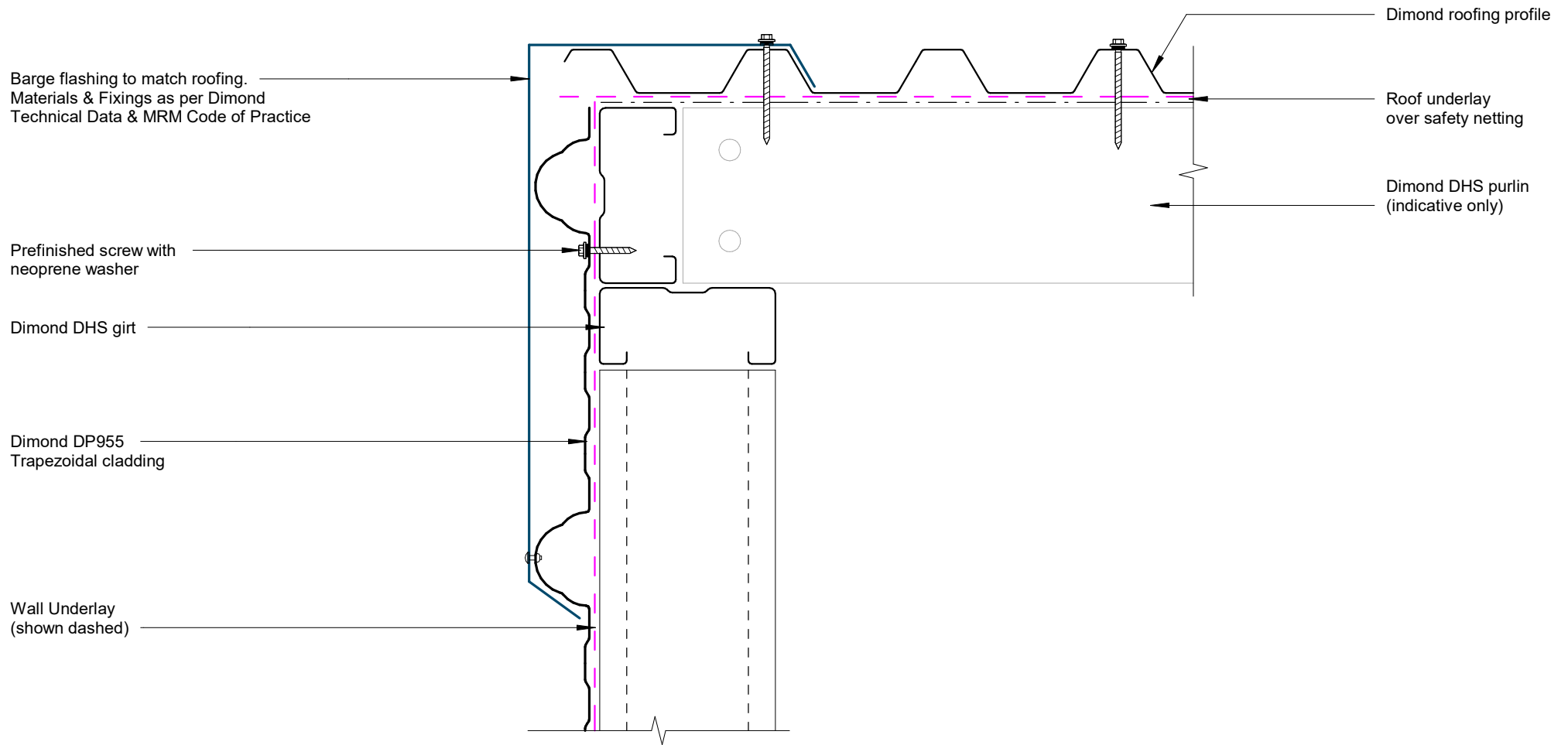


Wall Roof to Wall Apex Flashing

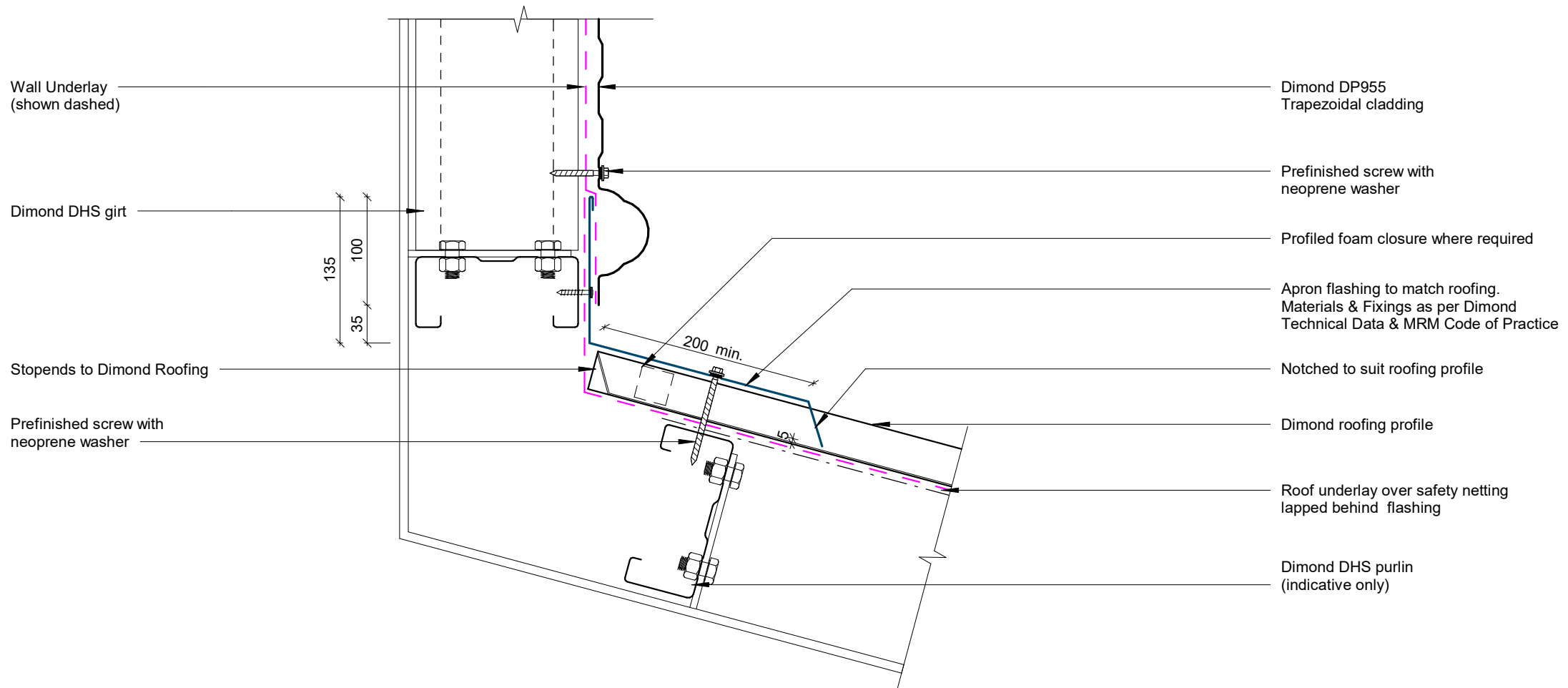


Barge Flashing

Typical Flashing Detail



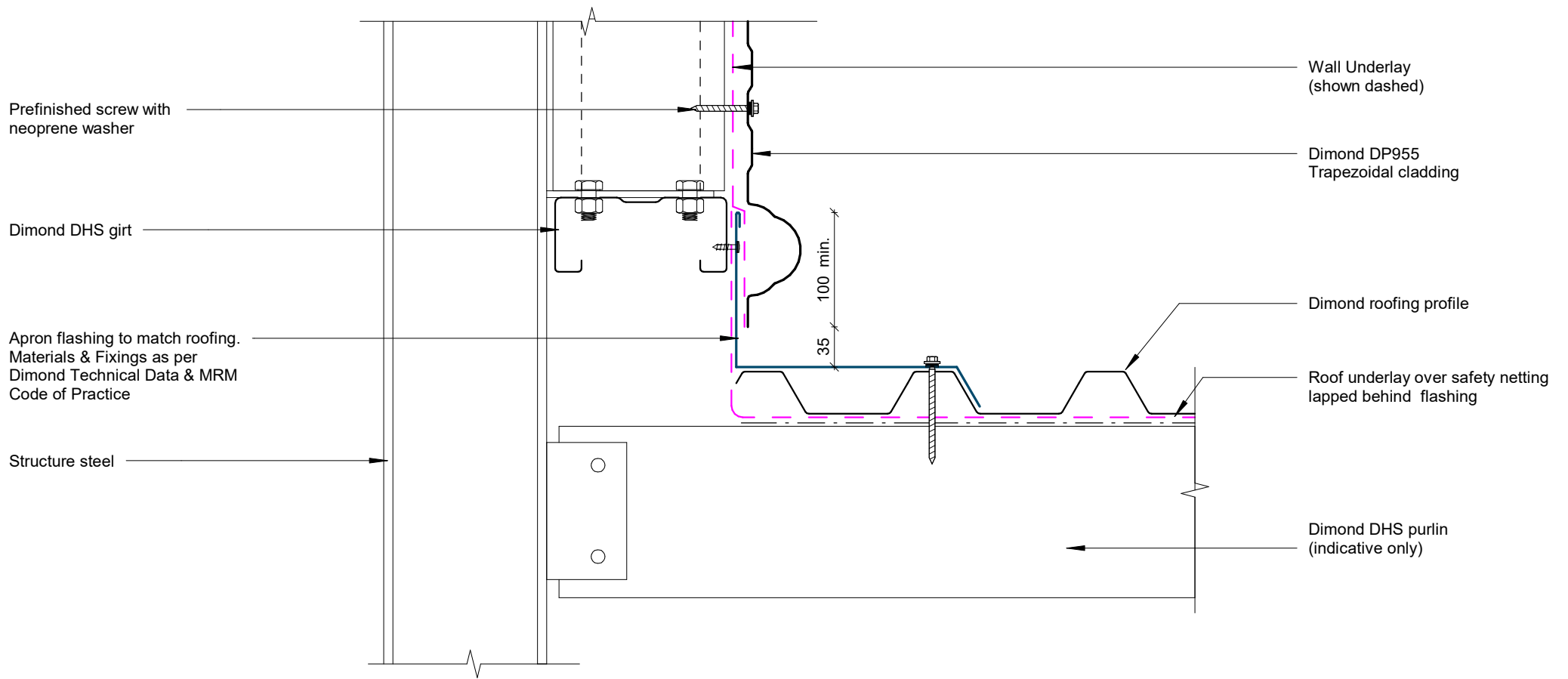
Barge Detail



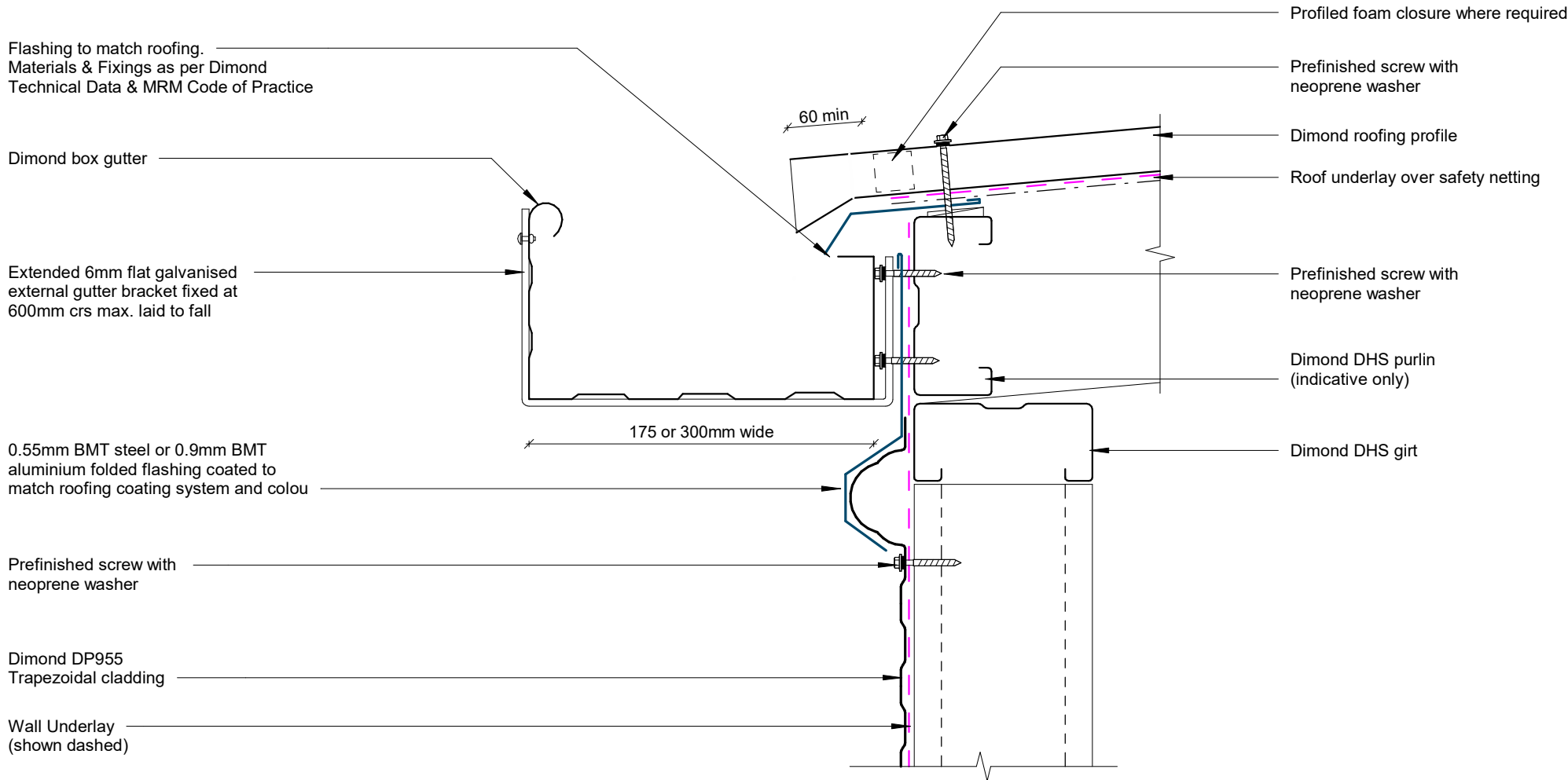
Wall to Roof Transverse Detail

Rev: 1

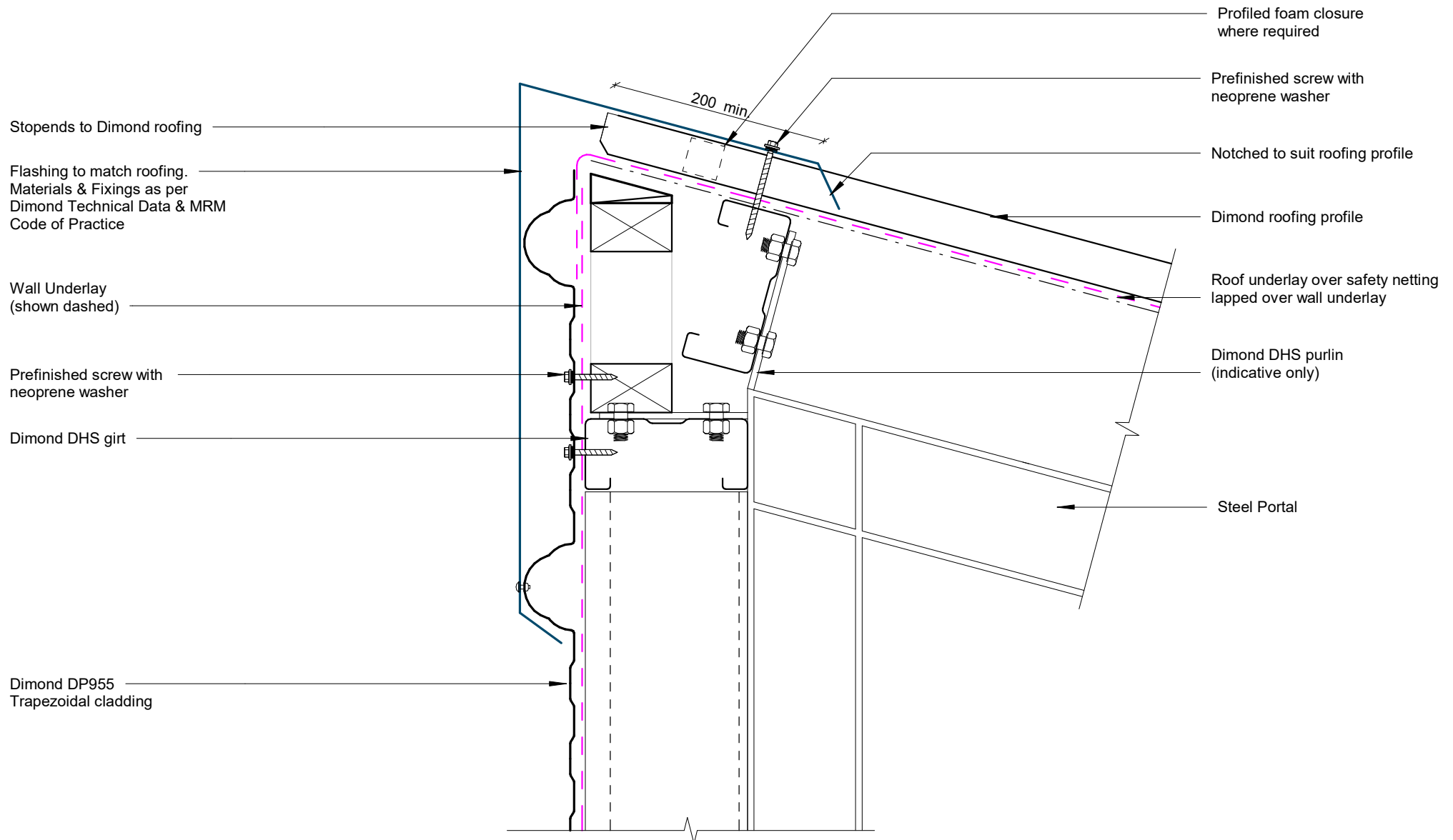
DP955 Commercial Horizontal Cladding



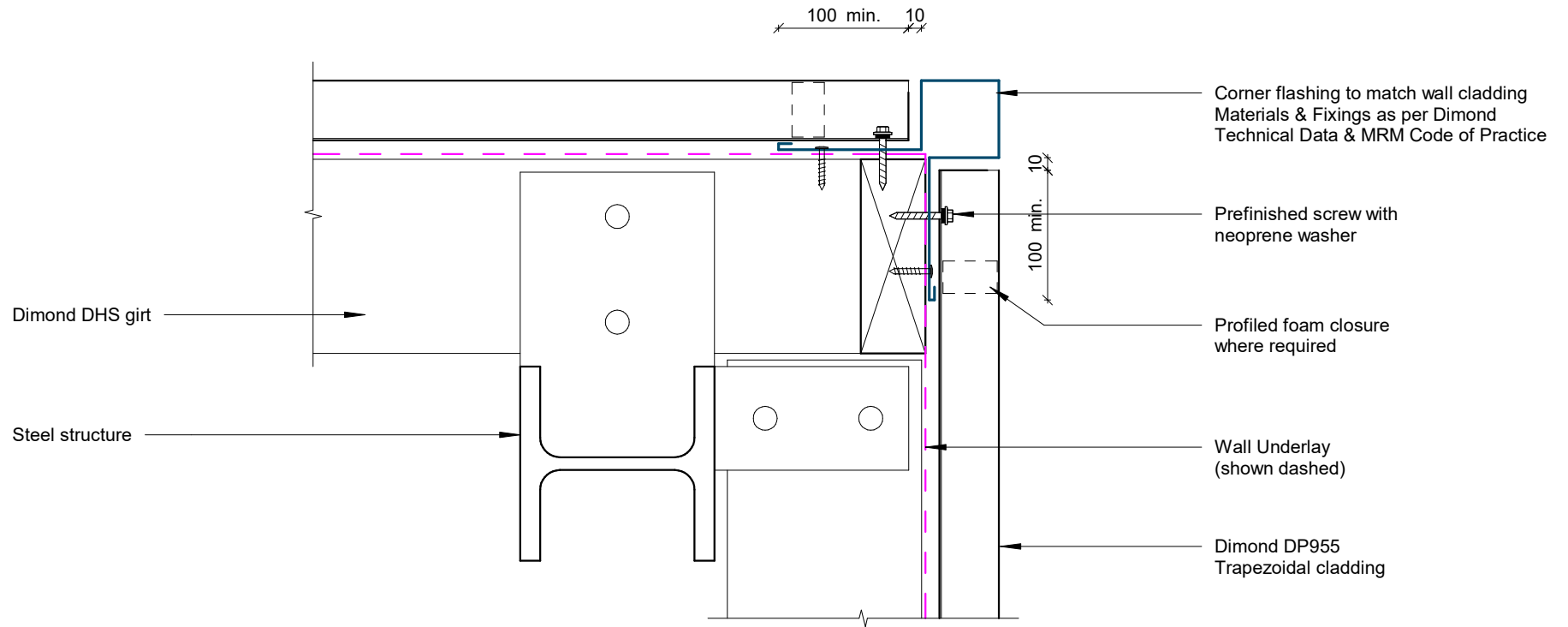
Wall to Roof Detail



Box Gutter Detail



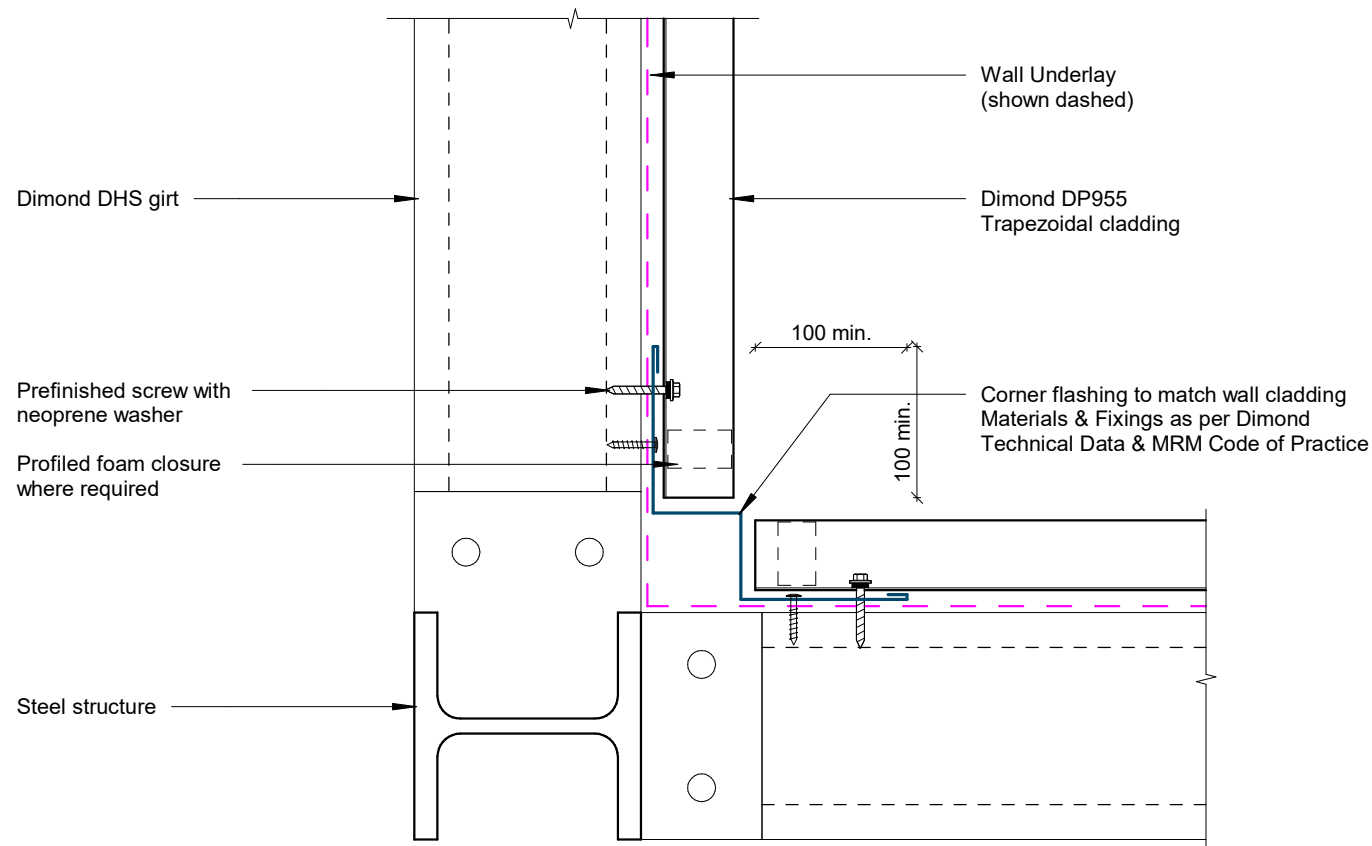
Wall to Roof Apex Detail



External Corner Detail

Rev: 1

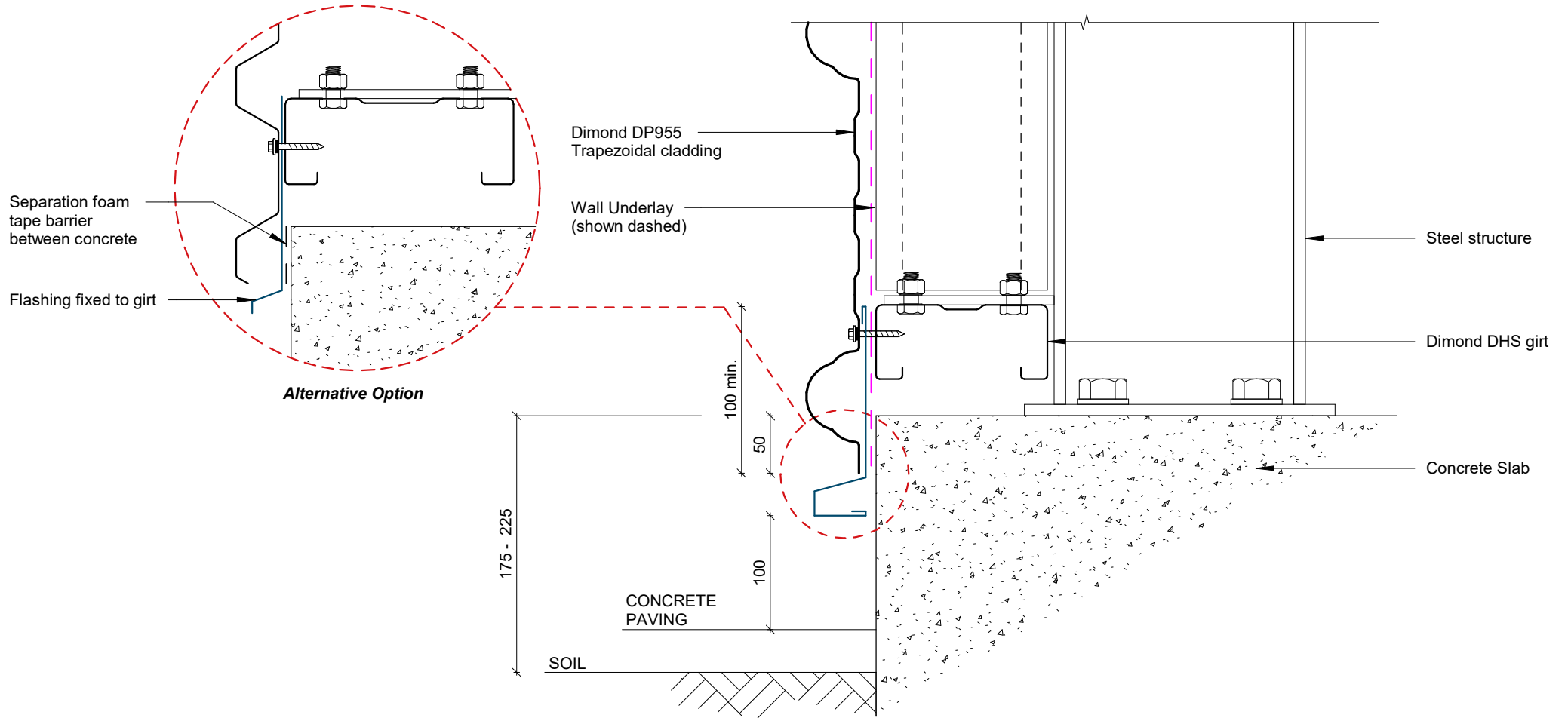
DP955 Commercial Horizontal Cladding



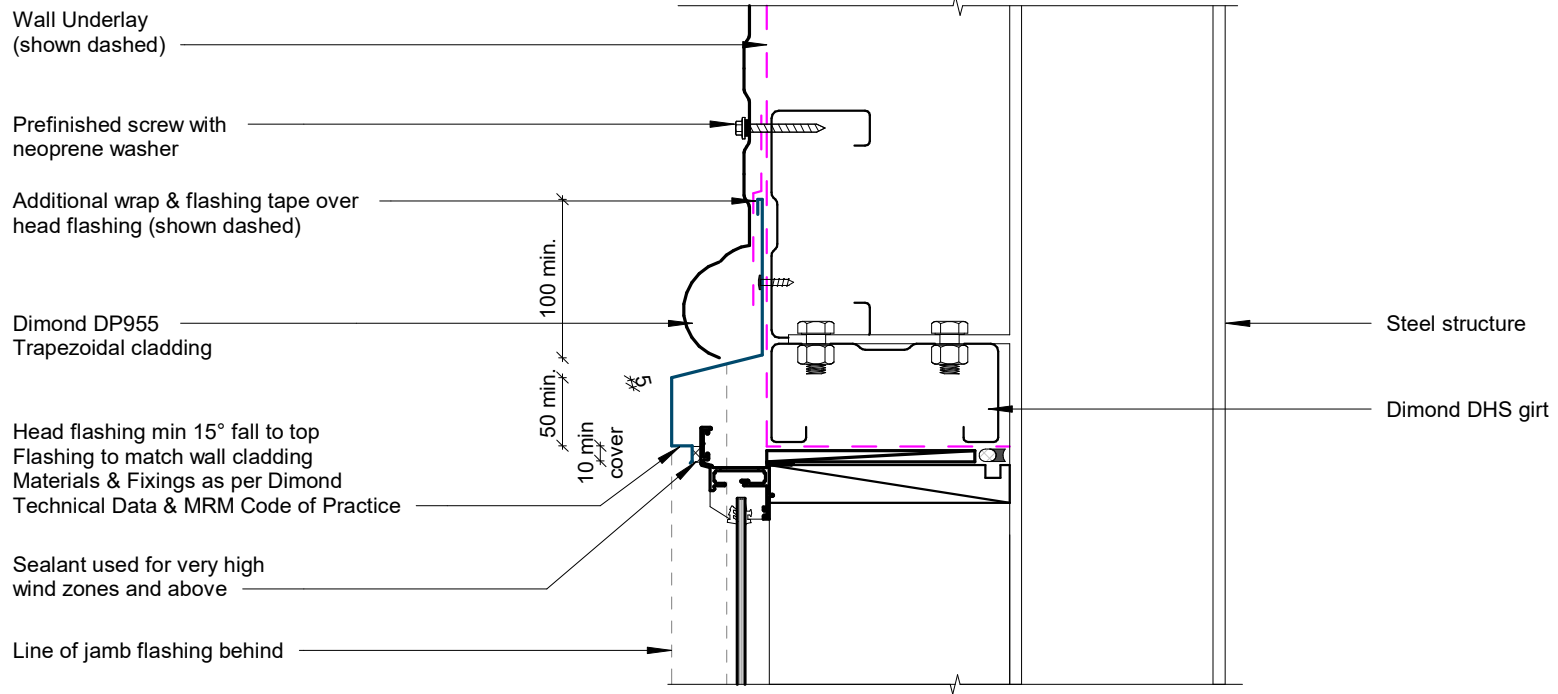
Internal Corner Detail

Rev: 1

DP955 Commercial Horizontal Cladding



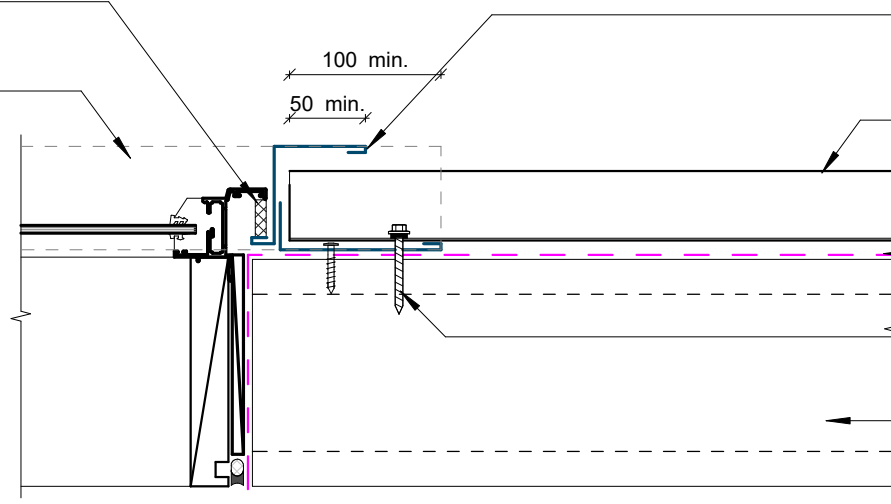
Base Detail



Window / Door Head Detail

Sealant used for very high
wind zones and above

Line of head flashing over



Flashing to match wall cladding
Materials & Fixings as per Dimond
Technical Data & MRM Code of Practice

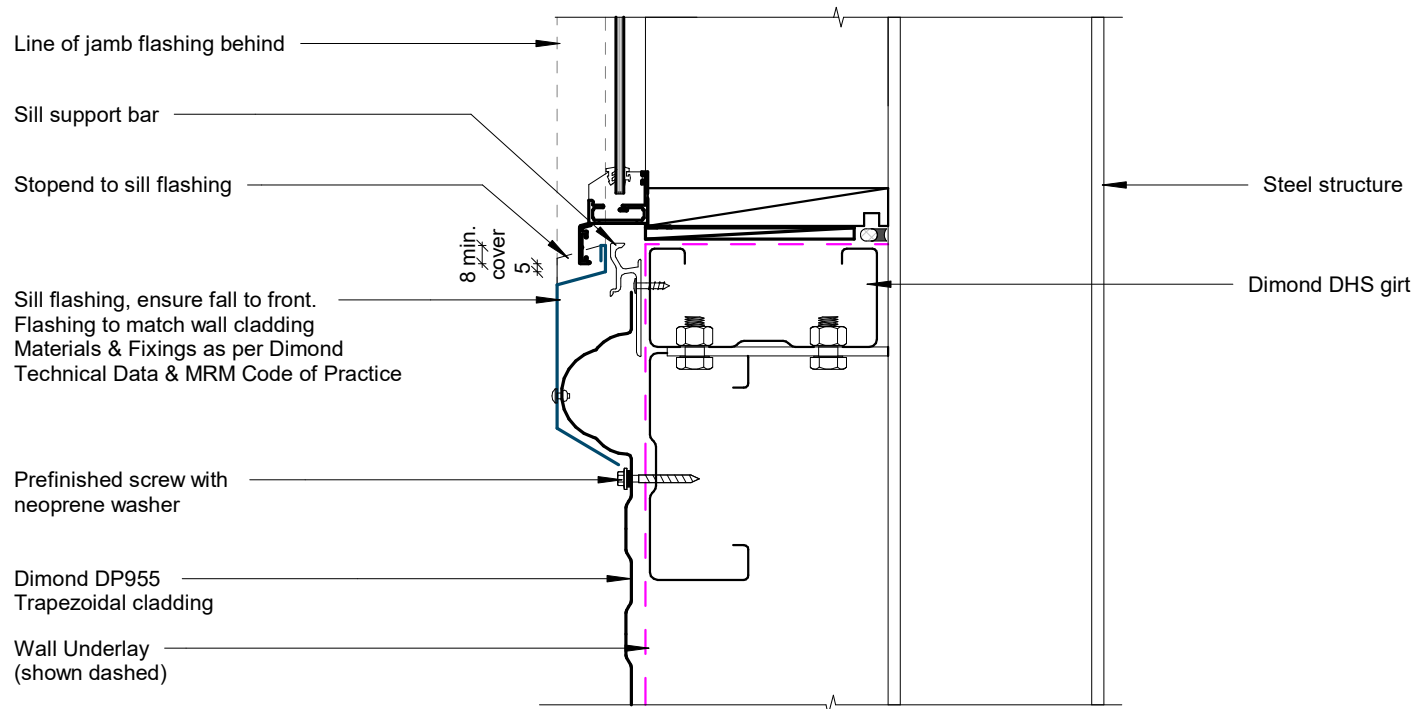
Dimond DP955
Trapezoidal cladding

Wall Underlay
(shown dashed)

Prefinished screw with
neoprene washer

Dimond DHS girt

Window / Door Jamb Detail



Window Sill Detail