

CORRUGATE

RESIDENTIAL HORIZONTAL WALL CLADDING

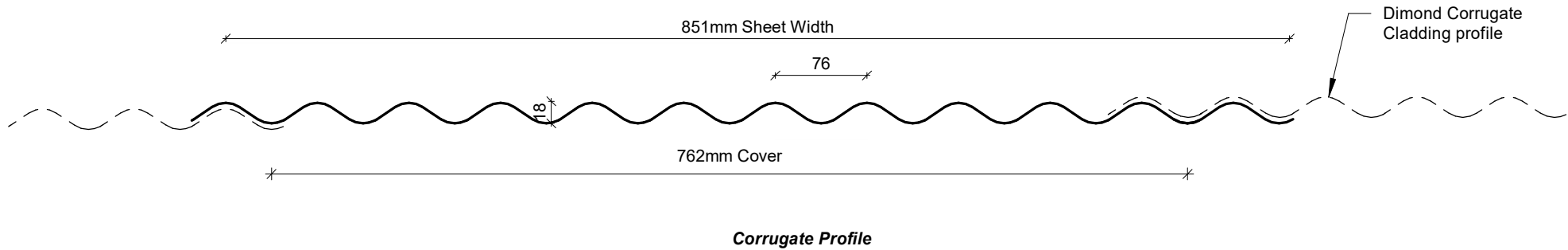
DETAILS:

REV:

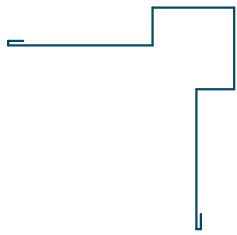
DATE:

CRHC00	Cover Sheet	1	July 2025
CRHC01	Profile Summary	1	July 2025
CRHC02	Typical Flashing Details	1	July 2025
CRHC03	Barge Flashing Detail	1	July 2025
CRHC04	External Corner Detail	1	July 2025
CRHC05	Internal Corner Detail	1	July 2025
CRHC06	Base Detail	1	July 2025
CRHC07	Soffit Detail	1	July 2025
CRHC08	Window/ Door Head Detail	1	July 2025
CRHC09	Window/ Door Jamb Detail	1	July 2025
CRHC10	Window Sill Detail	1	July 2025
CRHC11	Meterbox Head Detail	1	July 2025
CRHC12	Meterbox Jamb Detail	1	July 2025
CRHC13	Meterbox Sill Detail	1	July 2025
CRHC14	Pipe Penetration Detail	1	July 2025
CRHC15	Cladding to Concrete Junction Detail	1	July 2025
CRHC16	Cladding to Brick Junction Detail	1	July 2025
CRHC17	Cladding to Panel Junction Detail	1	July 2025
CRHC18	3D Window Flashing Detail	1	July 2025

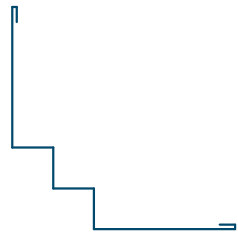
PROFILE OVERVIEW	
MINIMUM PITCH	8°
RIB TYPE	Low
RIBS PER SHEET	11.5 Ribs per sheet
WIDTH	762mm Cover, 851mm Sheet



Profile Summary



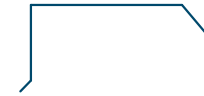
External Corner Flashing



Internal Corner Flashing



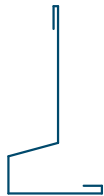
Window Head Flashing



Barge Flashing



Window Sill Flashing



Base Flashing

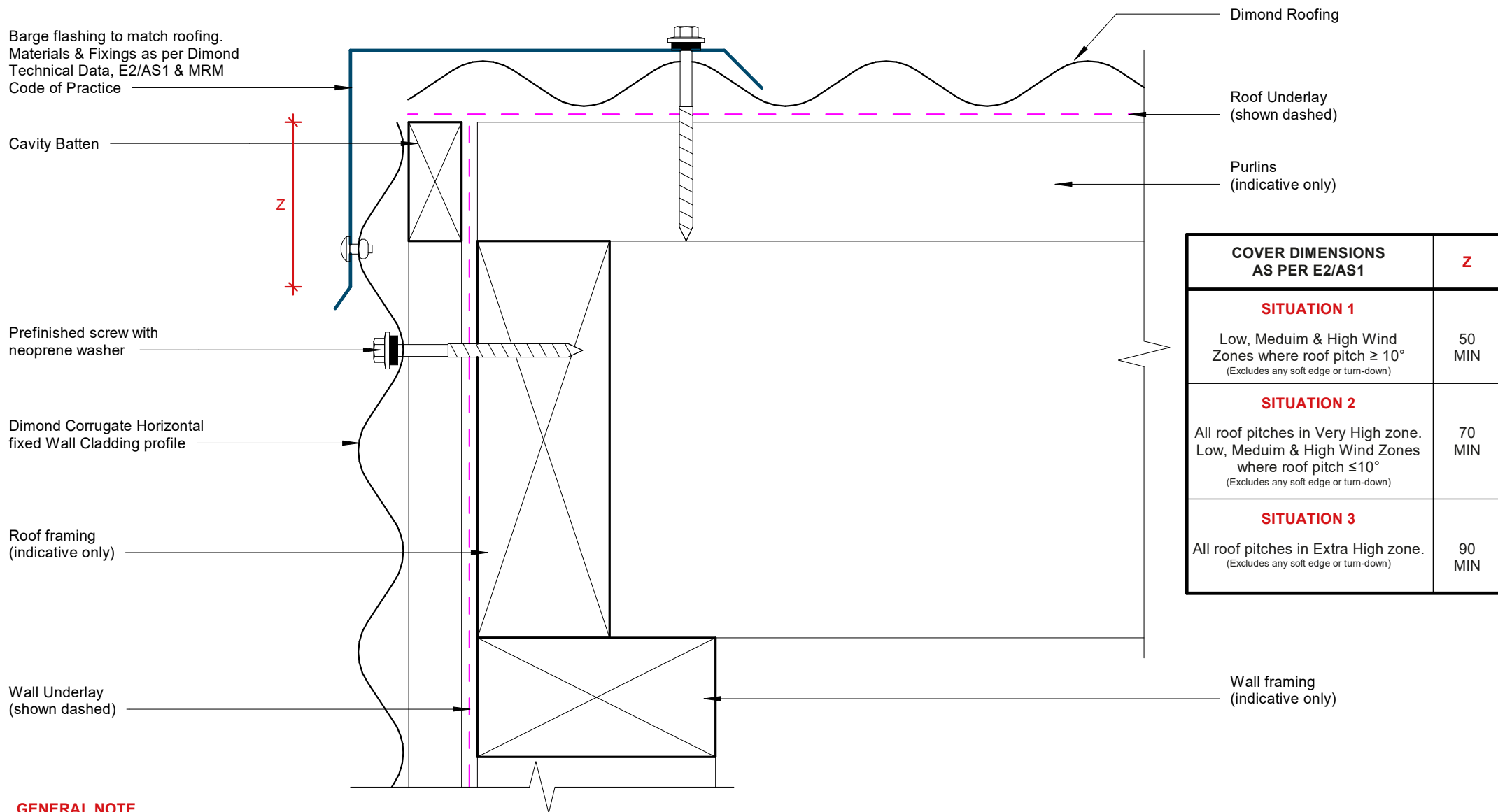


Window Jamb Flashing



Soffit Flashing

Typical Flashing Details



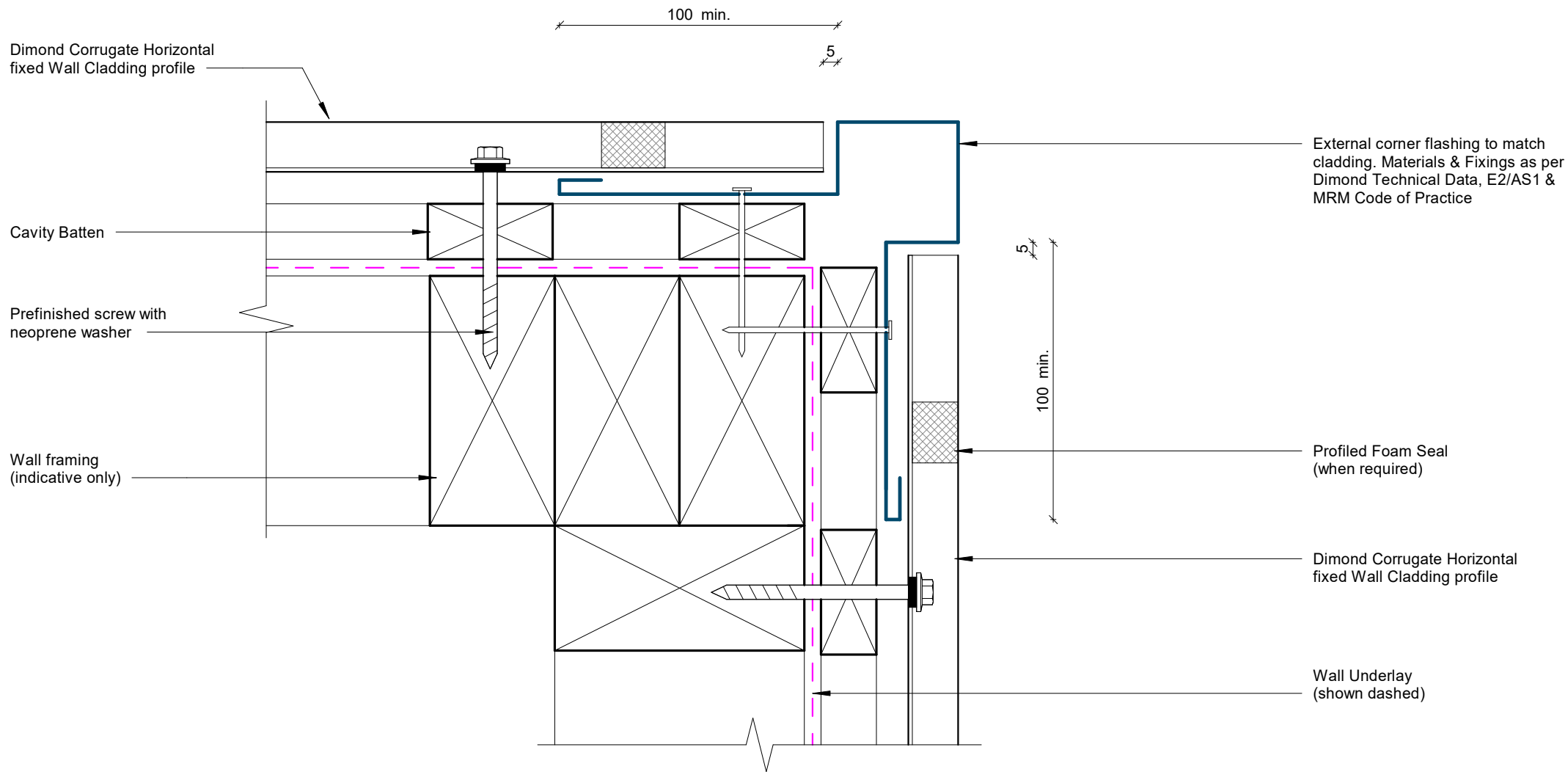
GENERAL NOTE

Cavity battens or timber framing that contain copper must be separated from steel cladding by a strip of wall or roof underlay or DPC.

Barge Flashing Detail

Rev: 1

Corrugate Residential Horizontal Cladding



GENERAL NOTE

Cavity battens or timber framing that contain copper must be separated from steel cladding by a strip of wall or roof underlay or DPC.

External Corner Detail

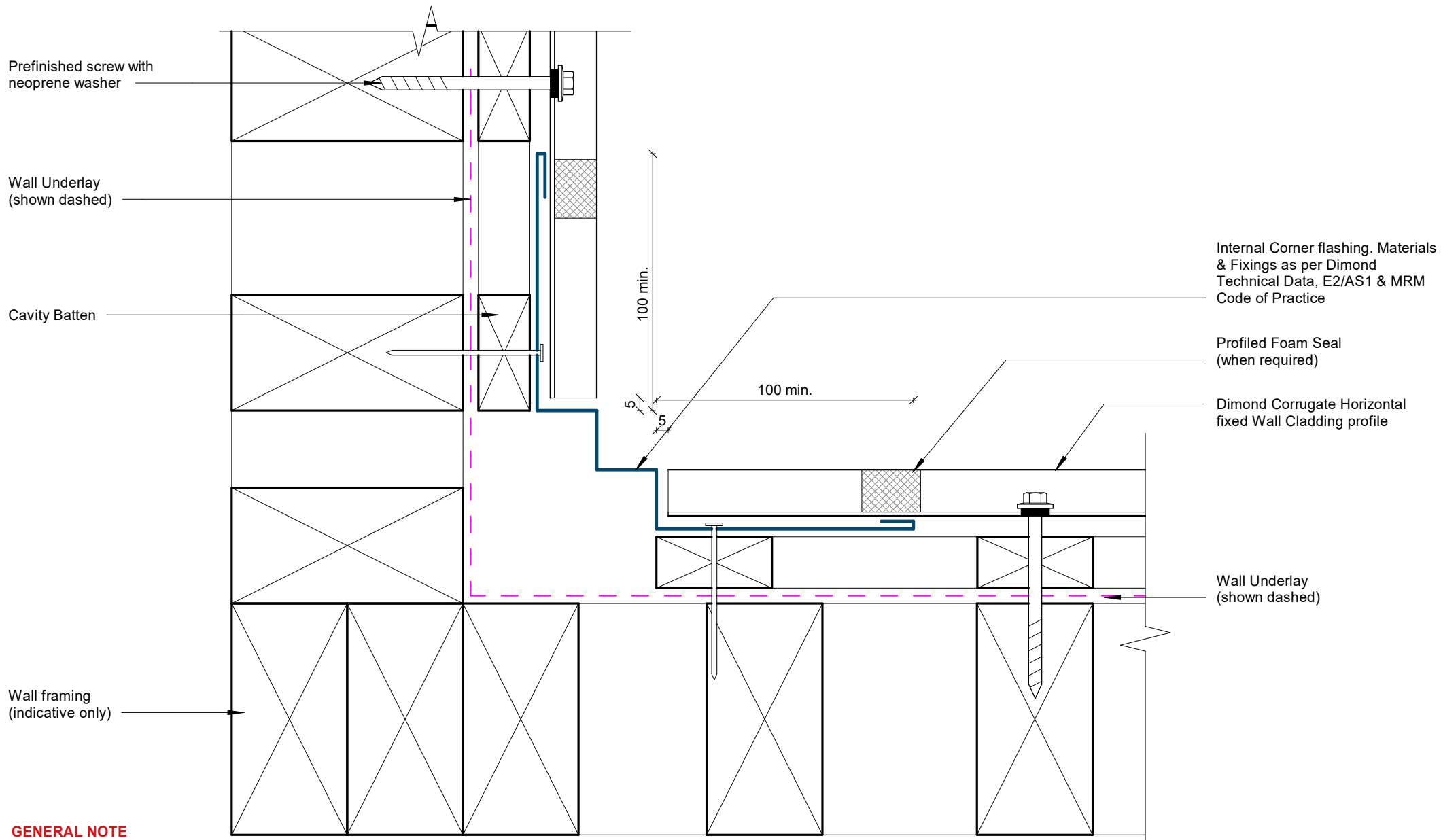
Corrugate Residential Horizontal Cladding

Rev: 1



©Dimond 2023, all rights reserved. The information and specifications contained in this document are proprietary to Dimond and may not be used other than for the purpose of designing or building a roof or roofing system solely using products supplied or approved by Dimond ("Permitted Purpose"). You may copy this document solely for the Permitted Purpose, but may not otherwise copy, publish, distribute or modify this document without Dimond's prior written consent. Dimond will not be liable for any use of this document or information and specifications contained in this document, other than for the Permitted Purpose

Date: July 2025 Scale: 1 : 2 Sheet: CRHC04



GENERAL NOTE

Cavity battens or timber framing that contain copper must be separated from steel cladding by a strip of wall or roof underlay or DPC.

Internal Corner Detail

Prefinished screw with neoprene washer

Dimond Corrugate Horizontal fixed Wall Cladding profile

Cavity Batten

Cavity drainage closure strip

Base flashing to match wall cladding Materials & Fixings as per Dimond Technical Data, E2/AS1 & MRM Code of Practice

Wall Underlay (shown dashed)

Wall framing (indicative only)

Concrete Slab (indicative only)

75 min. cover
50 min.
25 min.
See Ground Clearance Note

Slab

SOIL

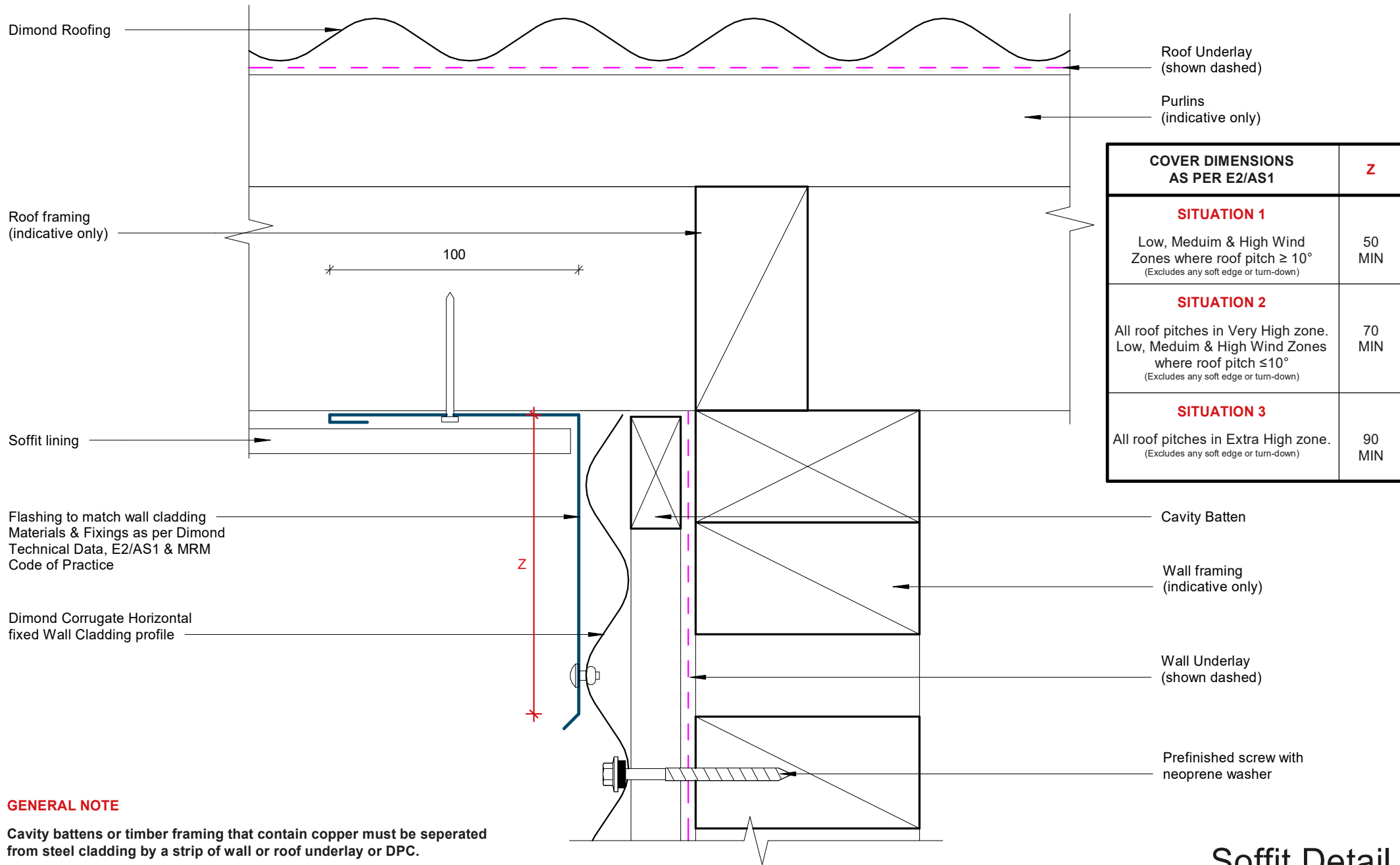
GROUND CLEARANCE NOTE

GROUND CLEARANCE NOTE	
	Application
25mm	Clearance at Garage door
35mm	Sheltered areas or cladding abutting a deck
75mm	Unlined buildings
100mm	Lined buildings and dwellings. Stone chip ground surface
150mm	Kept lawn ground surface
175mm	Pasture ground surface

GENERAL NOTE

Cavity battens or timber framing that contain copper must be separated from steel cladding by a strip of wall or roof underlay or DPC.

Base Detail



GENERAL NOTE

Cavity battens or timber framing that contain copper must be separated from steel cladding by a strip of wall or roof underlay or DPC.

Soffit Detail

Rev: 1

Corrugate Residential Horizontal Cladding

Dimond Corrugate Horizontal fixed Wall Cladding profile

Prefinished screw with neoprene washer

Cavity Batten

Cavity drainage closure strip

Window head flashing min 15° fall to top. Materials & Fixings as per Dimond Technical Data, E2/AS1 & MRM Code of Practice

Sealant used for very high wind zones and above

Line of jamb flashing behind

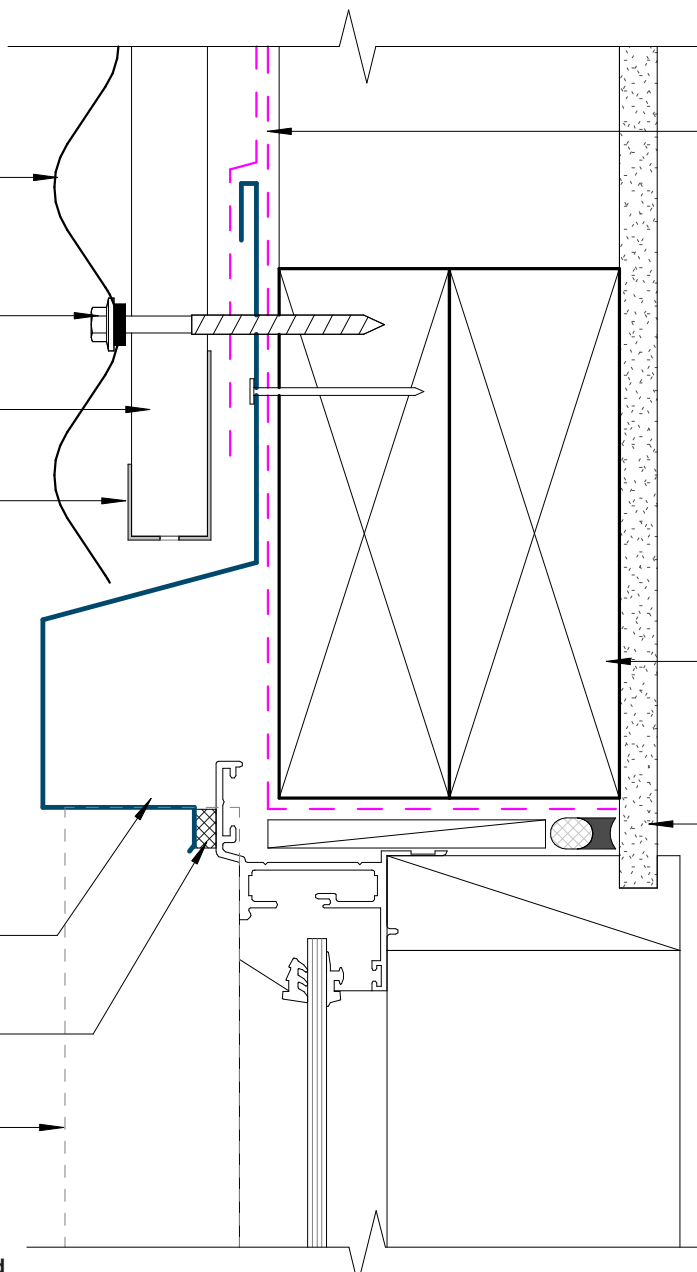
Wall Underlay (shown dashed)

75mm min. flashing lap

Wall framing (indicative only)

Wall lining (indicative only)

10 min. cover
50 min.



GENERAL NOTE

Cavity battens or timber framing that contain copper must be separated from steel cladding by a strip of wall or roof underlay or DPC.

Window/ Door Head Detail

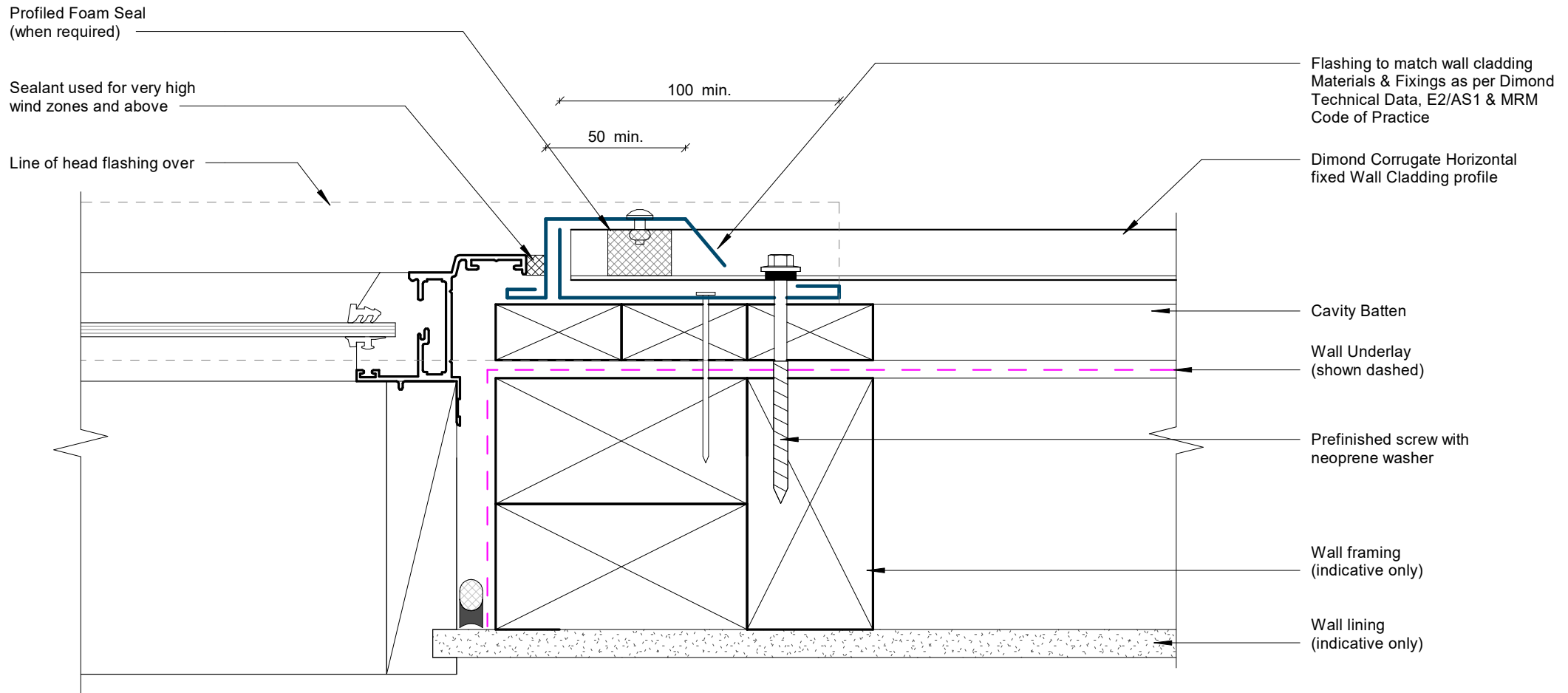
Rev: 1

Corrugate Residential Horizontal Cladding



©Dimond 2023, all rights reserved. The information and specifications contained in this document are proprietary to Dimond and may not be used other than for the purpose of designing or building a roof or roofing system solely using products supplied or approved by Dimond ("Permitted Purpose"). You may copy this document solely for the Permitted Purpose, but may not otherwise copy, publish, distribute or modify this document without Dimond's prior written consent. Dimond will not be liable for any use of this document or information and specifications contained in this document, other than for the Permitted Purpose

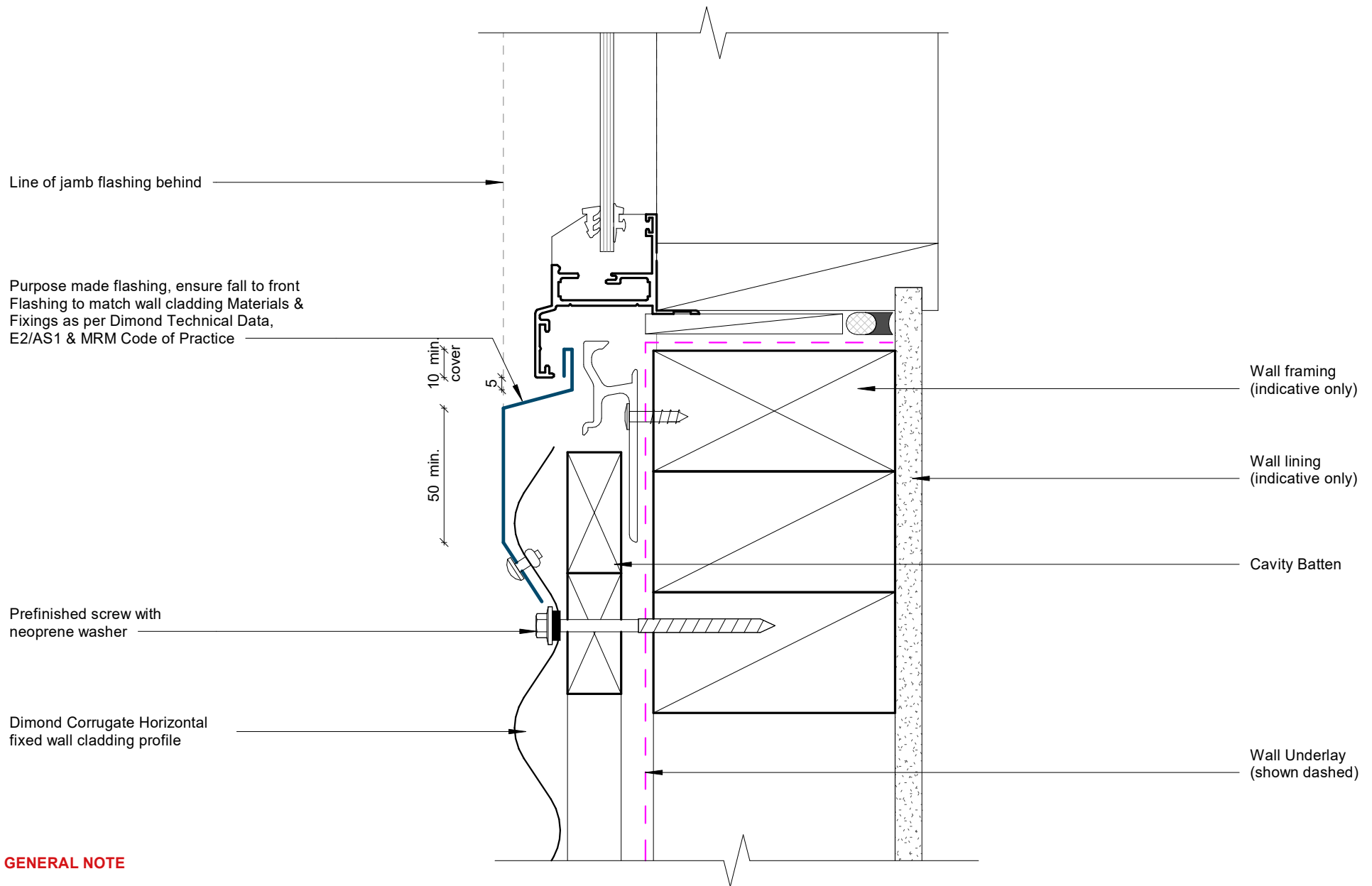
Date: July 2025 Scale: 1 : 2 Sheet: CRHC08



GENERAL NOTE

Cavity battens or timber framing that contain copper must be separated from steel cladding by a strip of wall or roof underlay or DPC.

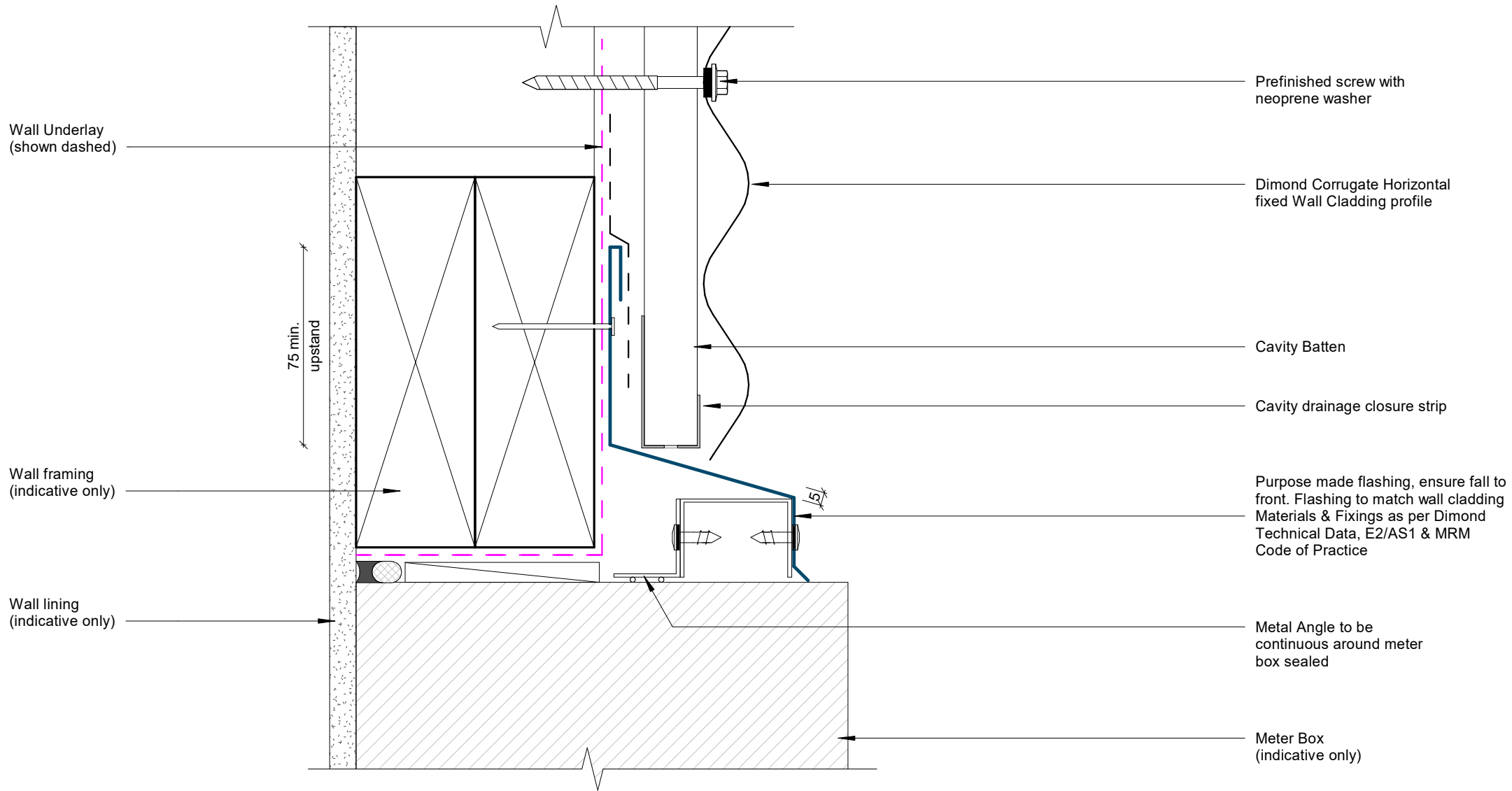
Window/ Door Jamb Detail



GENERAL NOTE

Cavity battens or timber framing that contain copper must be separated from steel cladding by a strip of wall or roof underlay or DPC.

Window Sill Detail



GENERAL NOTE

Cavity battens or timber framing that contain copper must be separated from steel cladding by a strip of wall or roof underlay or DPC.

Meterbox Head Detail

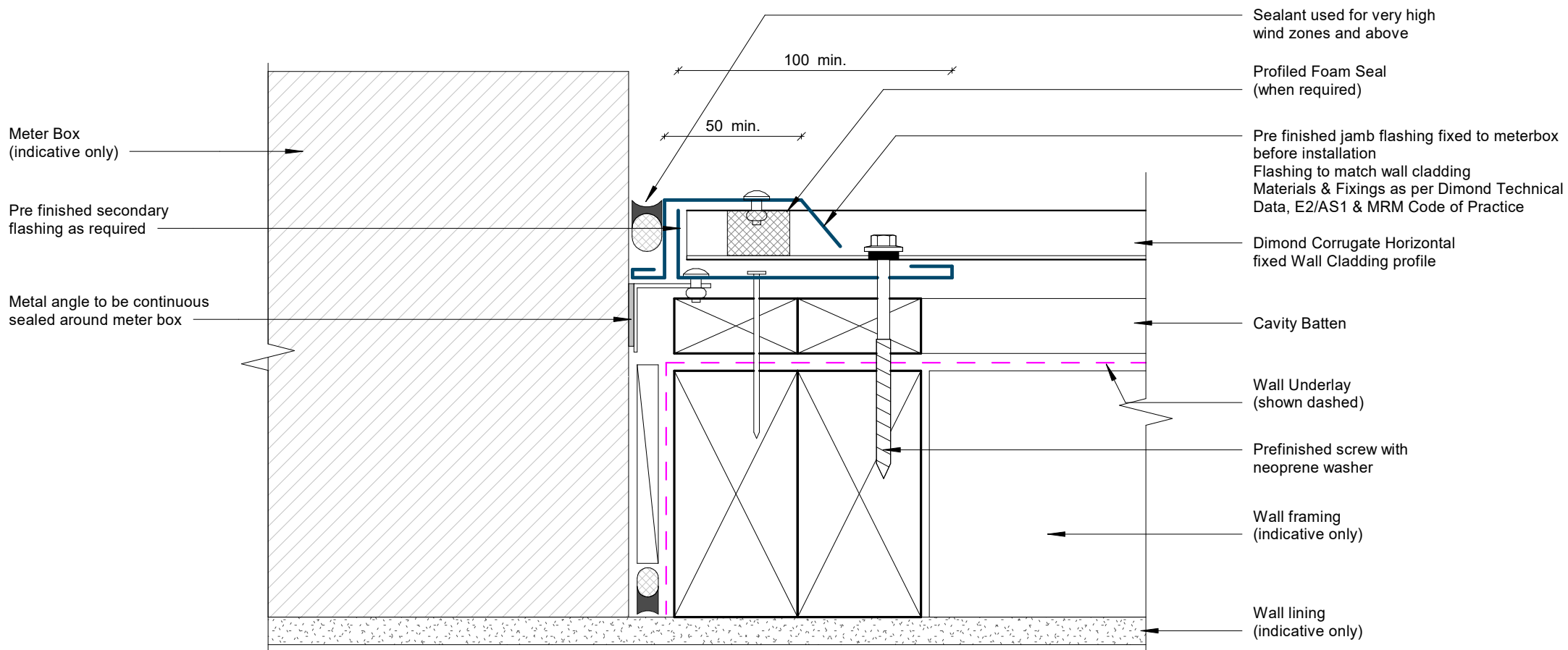
Corrugate Residential Horizontal Cladding

Rev: 1



©Dimond 2023, all rights reserved. The information and specifications contained in this document are proprietary to Dimond and may not be used other than for the purpose of designing or building a roof or roofing system solely using products supplied or approved by Dimond ("Permitted Purpose"). You may copy this document solely for the Permitted Purpose, but may not otherwise copy, publish, distribute or modify this document without Dimond's prior written consent. Dimond will not be liable for any use of this document or information and specifications contained in this document, other than for the Permitted Purpose

Date: July 2025 Scale: 1 : 2 Sheet: **CRHC11**



GENERAL NOTE

Cavity battens or timber framing that contain copper must be seperated from steel cladding by a strip of wall or roof underlay or DPC.

Meterbox Jamb Detail

Corrugate Residential Horizontal Cladding

Rev: 1

Meter Box
(indicative only)

Wall lining
(indicative only)

Air seal
(indicative only)

Cavity Batten

Wall framing
(indicative only)

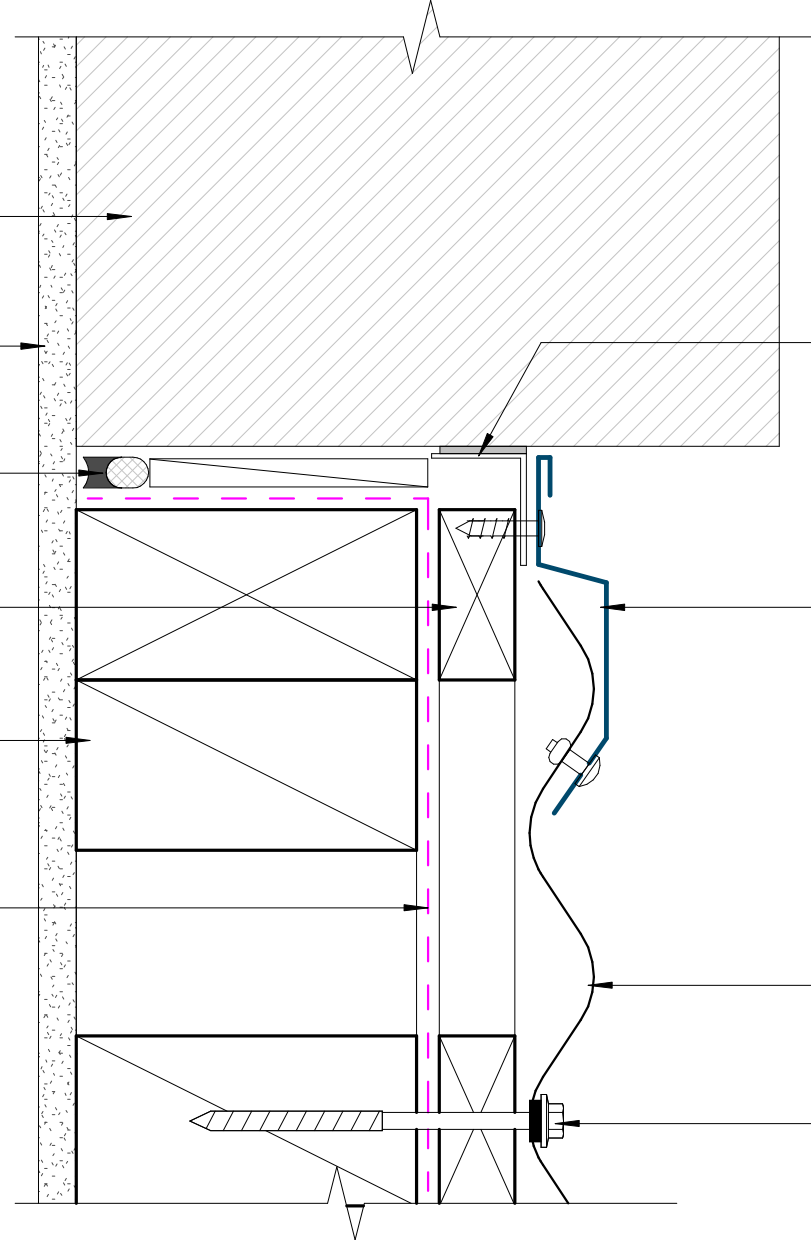
Wall Underlay
(shown dashed)

Metal Angle to be
continuous around meter
box sealed

Pre finished flashing, ensure fall to
front. Flashing to match wall cladding
Materials & Fixings as per Dimond
Technical Data, E2/AS1 & MRM
Code of Practice

Dimond Corrugate Horizontal
fixed Wall Cladding profile

Prefinished screw with
neoprene washer



GENERAL NOTE

Cavity battens or timber framing that contain copper must be separated from steel cladding by a strip of wall or roof underlay or DPC.

Meterbox Sill Detail

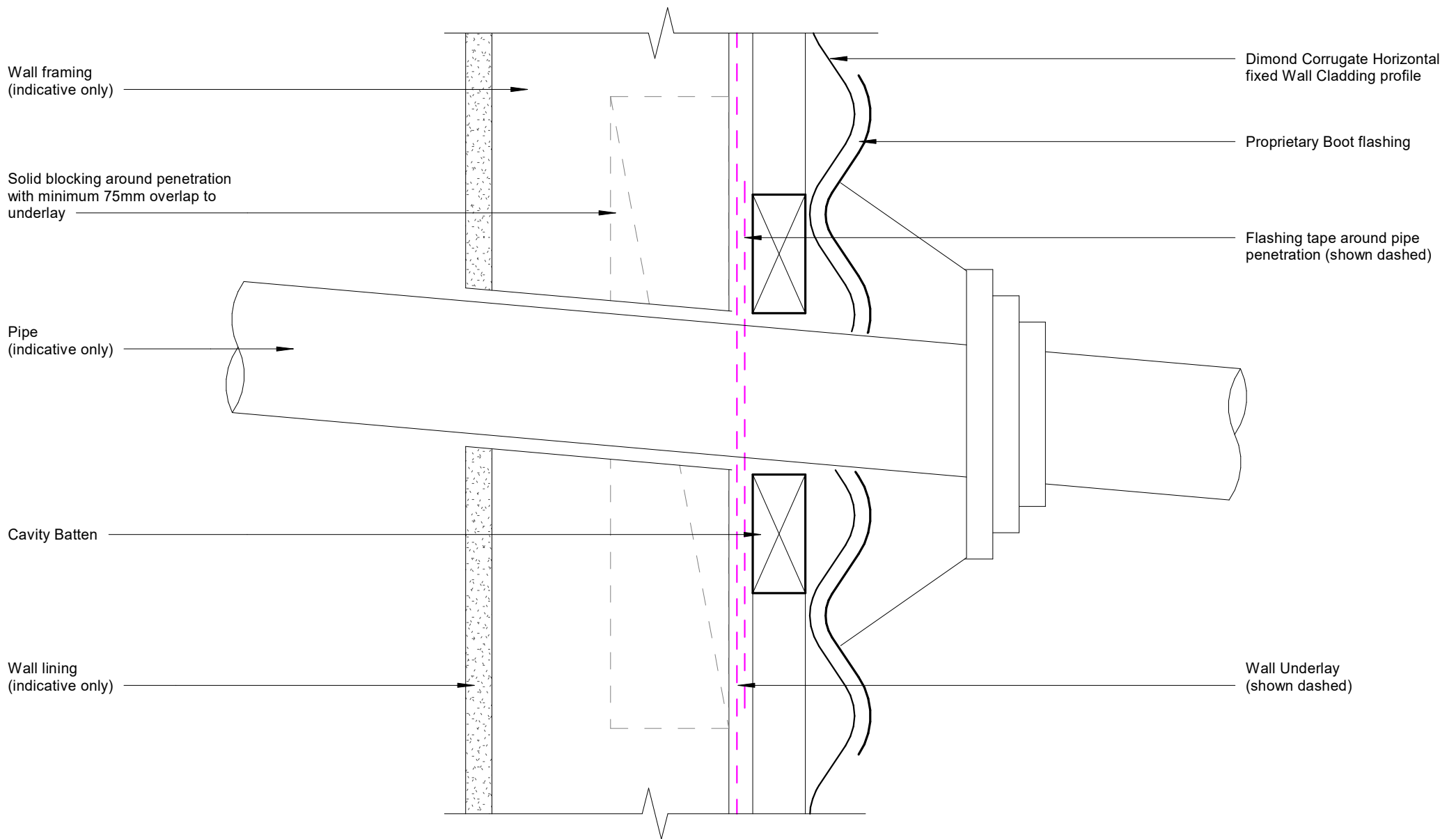
Rev: 1

Corrugate Residential Horizontal Cladding



©Dimond 2023, all rights reserved. The information and specifications contained in this document are proprietary to Dimond and may not be used other than for the purpose of designing or building a roof or roofing system solely using products supplied or approved by Dimond ("Permitted Purpose"). You may copy this document solely for the Permitted Purpose, but may not otherwise copy, publish, distribute or modify this document without Dimond's prior written consent. Dimond will not be liable for any use of this document or information and specifications contained in this document, other than for the Permitted Purpose

Date: July 2025 Scale: 1 : 2 Sheet: **CRHC13**



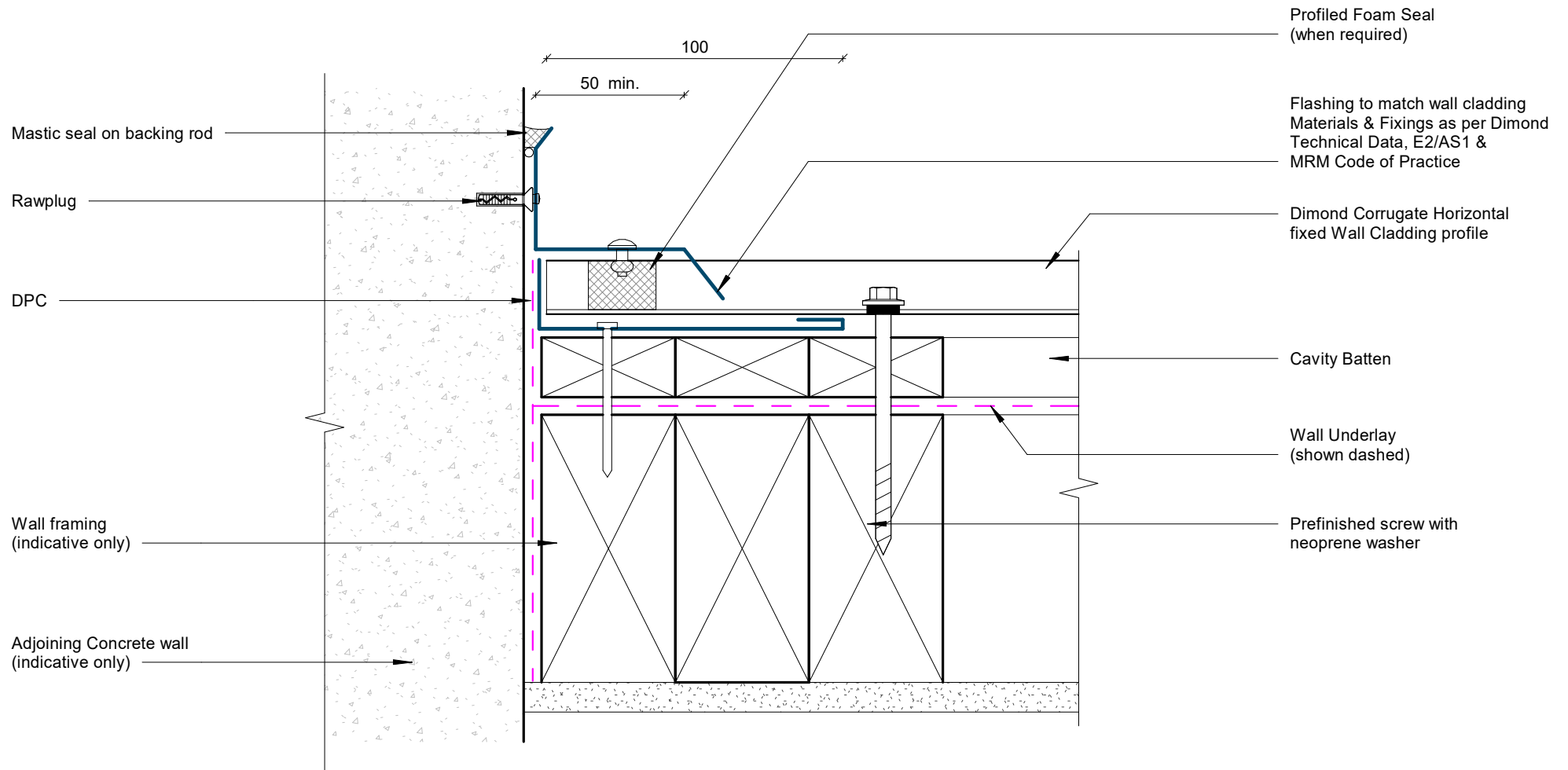
GENERAL NOTE

Cavity battens or timber framing that contain copper must be separated from steel cladding by a strip of wall or roof underlay or DPC.

Pipe Penetration Detail

Rev: 1

Corrugate Residential Horizontal Cladding



GENERAL NOTE

Cavity battens or timber framing that contain copper must be separated from steel cladding by a strip of wall or roof underlay or DPC.

Cladding to Concrete Junction Detail

Rev: 1

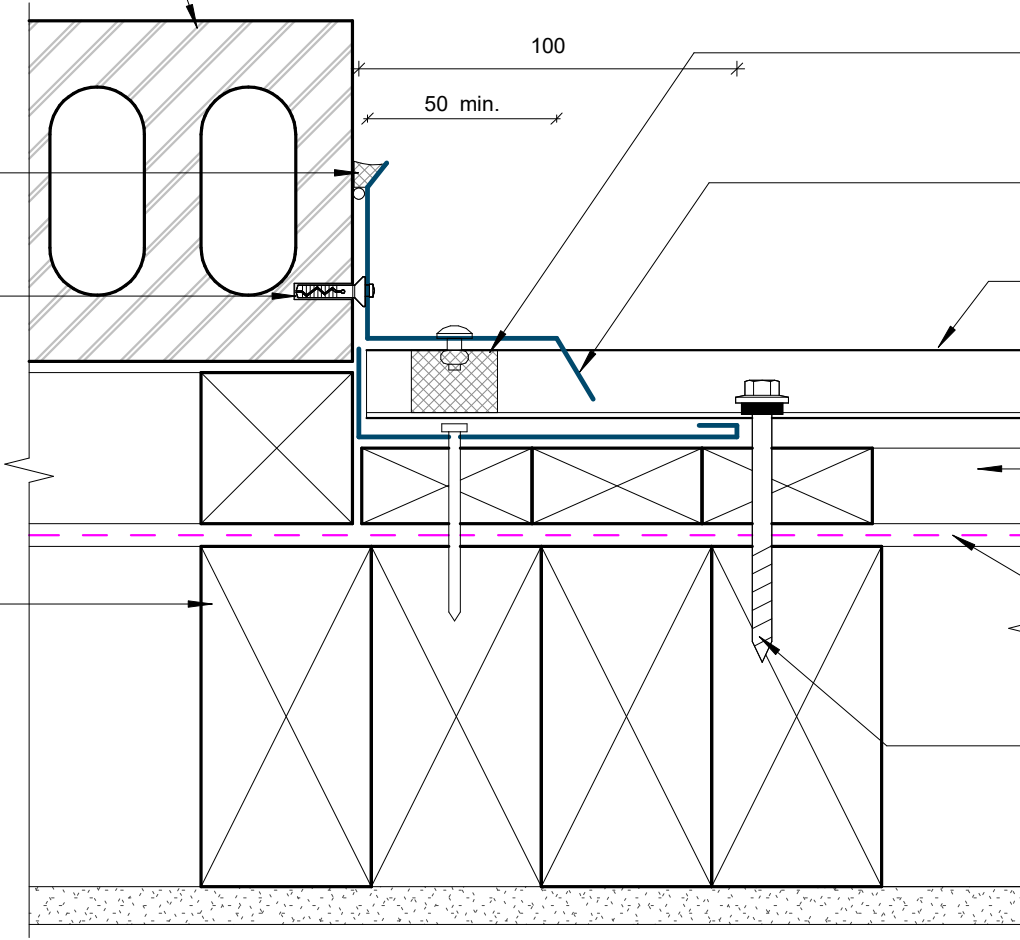
Corrugate Residential Horizontal Cladding

Adjoining Brick veneer on cavity
(indicative only)

Mastic seal on backing rod

Rawplug

Wall framing
(indicative only)



Profiled Foam Seal
(when required)

Flashing to match wall cladding
Materials & Fixings as per Dimond
Technical Data, E2/AS1 &
MRM Code of Practice

Dimond Corrugate
Horizontal cladding

Cavity Batten

Wall Underlay
(shown dashed)

Prefinished screw with
neoprene washer

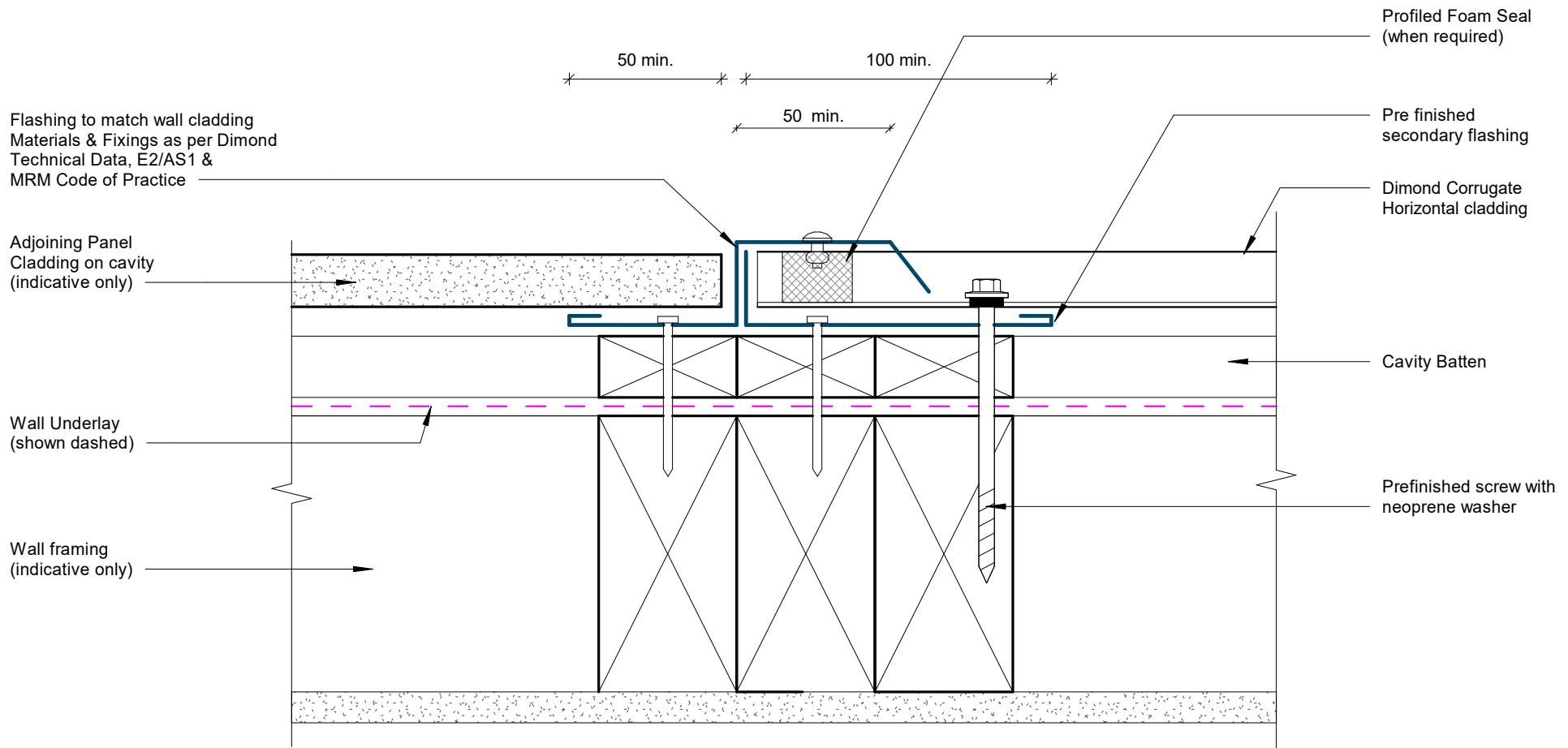
GENERAL NOTE

Cavity battens or timber framing that contain copper must be separated from steel cladding by a strip of wall or roof underlay or DPC.

Cladding to Brick Junction Detail

Rev: 1

Corrugate Residential Horizontal Cladding



GENERAL NOTE

Cavity battens or timber framing that contain copper must be separated from steel cladding by a strip of wall or roof underlay or DPC.

Cladding to Panel Junction Detail

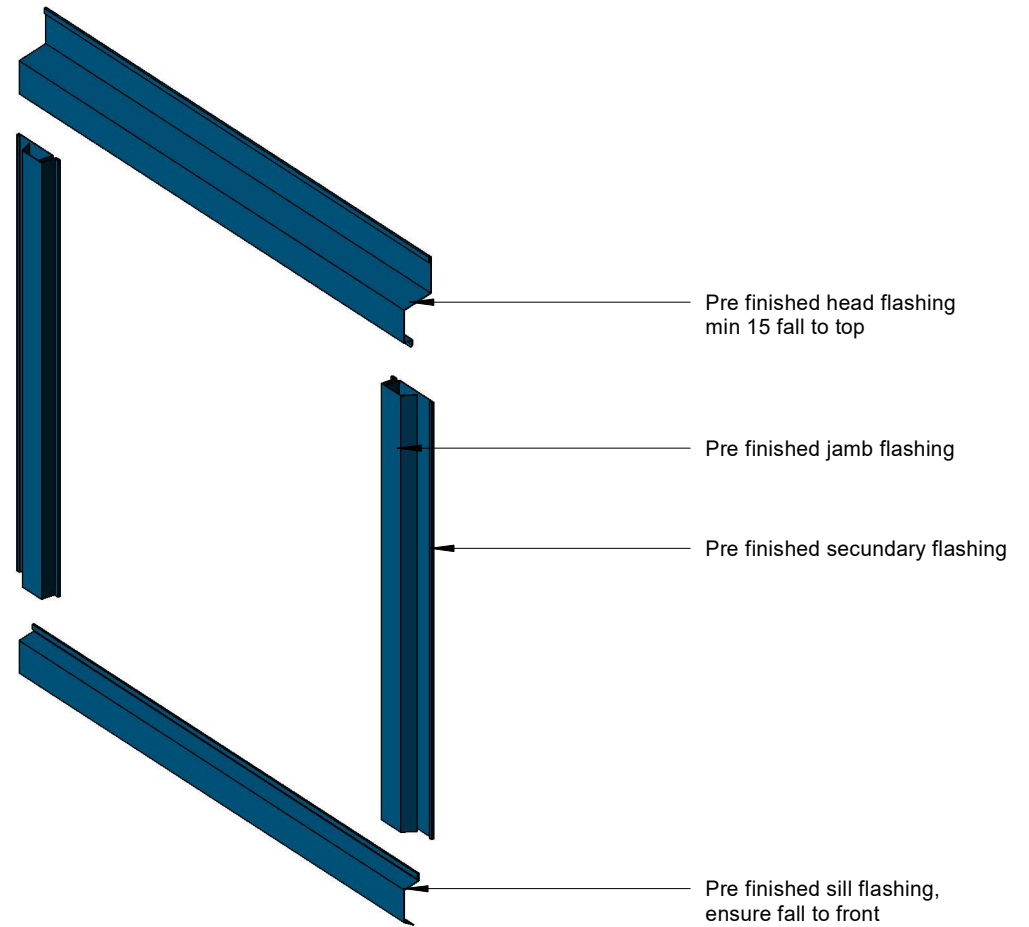
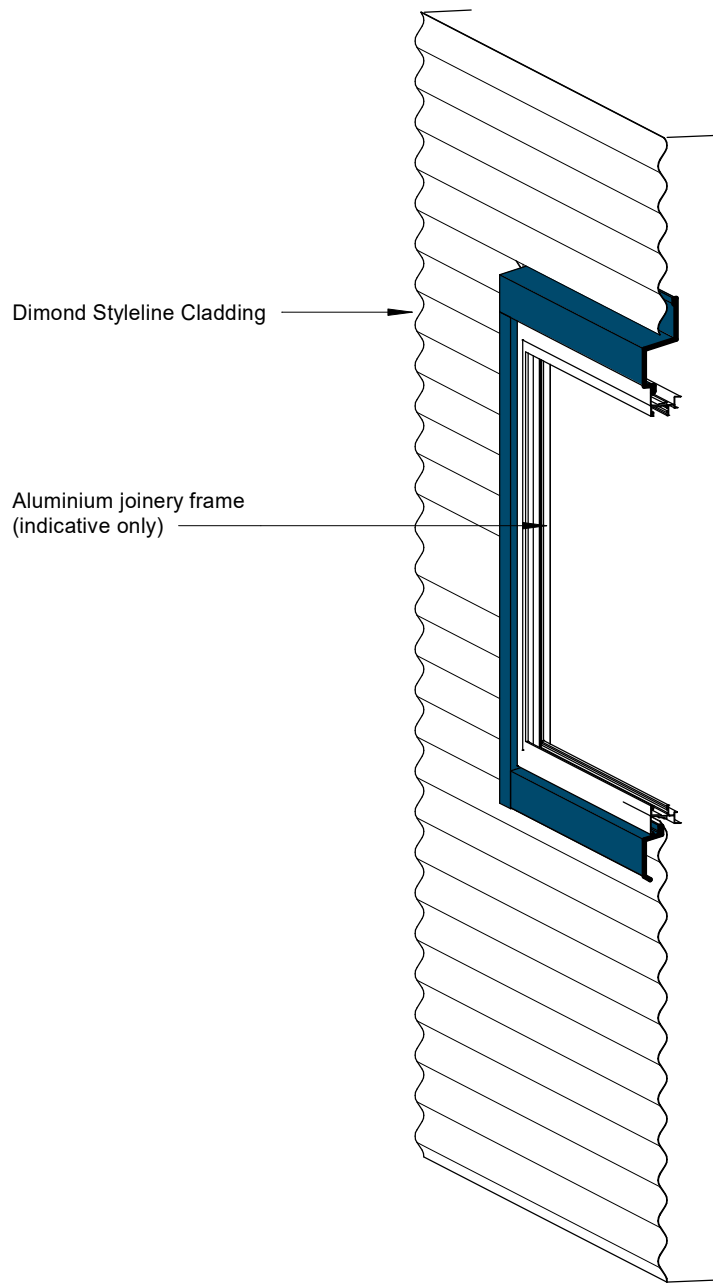
Rev: 1

Corrugate Residential Horizontal Cladding



©Dimond 2023, all rights reserved. The information and specifications contained in this document are proprietary to Dimond and may not be used other than for the purpose of designing or building a roof or roofing system solely using products supplied or approved by Dimond ("Permitted Purpose"). You may copy this document solely for the Permitted Purpose, but may not otherwise copy, publish, distribute or modify this document without Dimond's prior written consent. Dimond will not be liable for any use of this document or information and specifications contained in this document, other than for the Permitted Purpose

Date: July 2025 Scale: 1 : 2 Sheet: **CRHC17**



3D Window Flashing Detail

Rev: 1 **Corrugate Residential Horizontal Cladding**