

BROWNBUILT 900

RESIDENTIAL VERTICAL WALL CLADDING

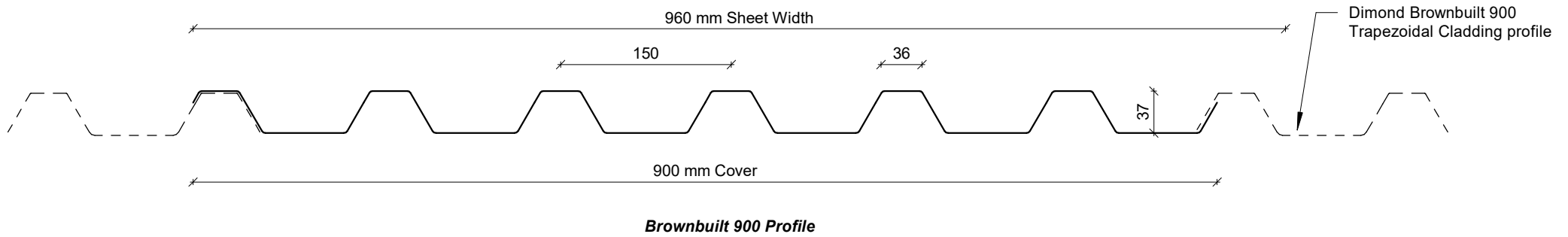
DETAILS:

REV:

DATE:

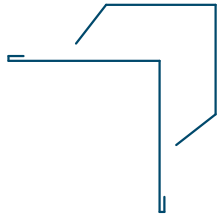
BRVC00	Cover Sheet	1	Jun 2025
BRVC01	Profile Summary	1	Jun 2025
BRVC02	Typical Flashing Detail	1	Jun 2025
BRVC03	Barge Flashing Detail	1	Jun 2025
BRVC04	Transverse Junction Detail	1	Jun 2025
BRVC05	External Corner Detail	1	Jun 2025
BRVC06	Internal Corner Detail	1	Jun 2025
BRVC07	Base Detail	1	Jun 2025
BRVC08	Soffit Detail	1	Jun 2025
BRVC09	Window Head Detail	1	Jun 2025
BRVC10	Window Jamb Detail	1	Jun 2025
BRVC11	Window Sill Detail	1	Jun 2025
BRVC12	Meterbox Head Detail	1	Jun 2025
BRVC13	Meterbox Jamb Detail	1	Jun 2025
BRVC14	Meterbox Sill Detail	1	Jun 2025
BRVC15	Pipe Penetration Detail	1	Jun 2025
BRVC16	Cladding to Concrete Junction Detail	1	Jun 2025
BRVC17	Cladding to Brick Junction Detail	1	Jun 2025
BRVC18	Cladding to Panel Junction Detail	1	Jun 2025
BRVC19	3D Window Flashing Detail	1	Jun 2025

PROFILE OVERVIEW	
MINIMUM PITCH	3°
RIB TYPE	High
RIBS PER SHEET	7 Ribs per sheet
WIDTH	900mm Cover, 960mm Sheet

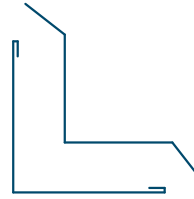


Profile Summary

Rev: 1 **Brownbuilt 900 Residential Vertical Cladding**



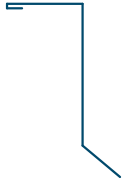
External Corner Flashing



Internal Corner Flashing



Base Flashing



Soffit Flashing



Window Head Flashing



Window Jamb Flashing



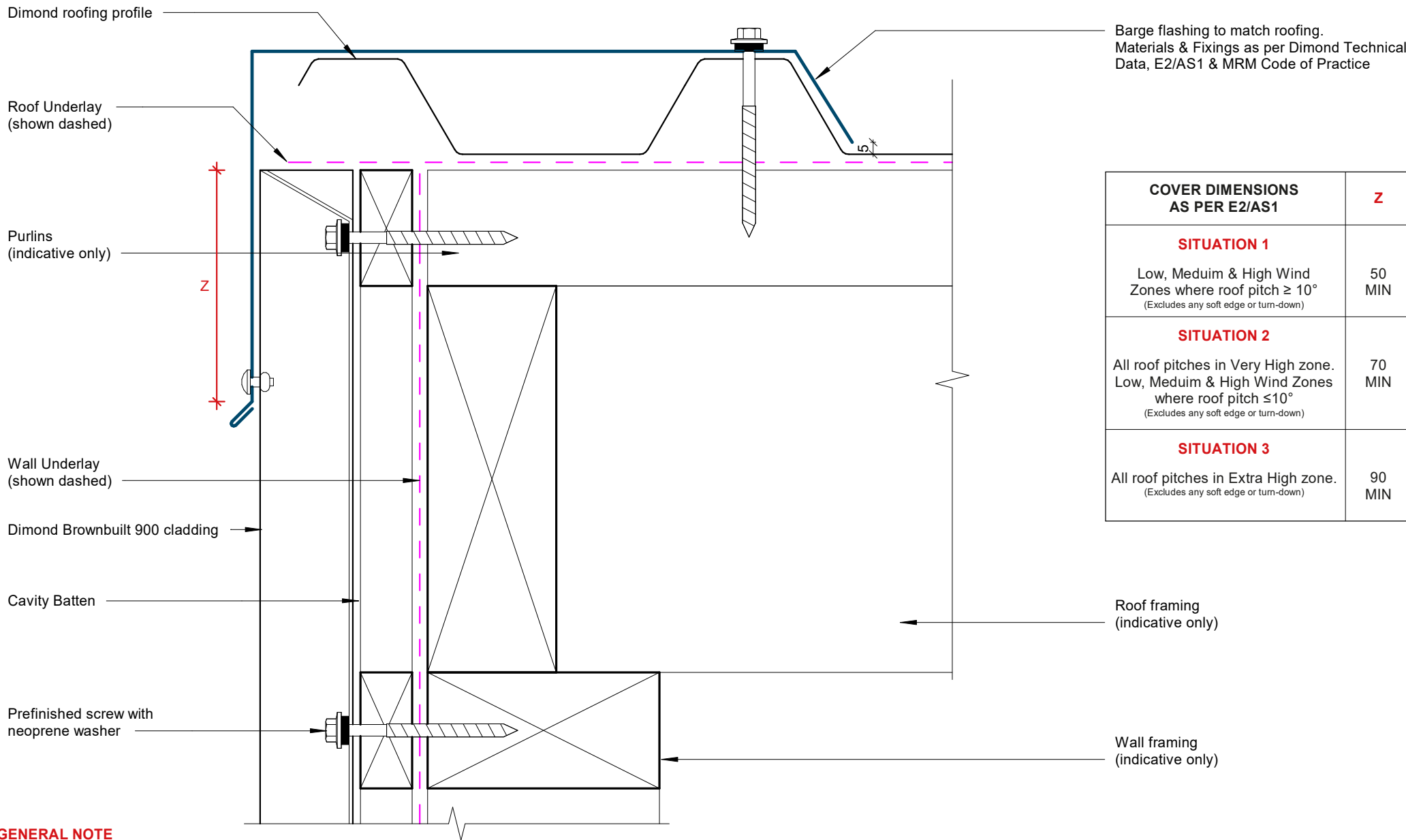
Window Sill Flashing



Transverse Flashing

Typical Flashing Detail

Rev: 1 **Brownbuilt 900 Residential Vertical Cladding**



COVER DIMENSIONS AS PER E2/AS1	Z
SITUATION 1 Low, Medium & High Wind Zones where roof pitch $\geq 10^\circ$ (Excludes any soft edge or turn-down)	50 MIN
SITUATION 2 All roof pitches in Very High zone. Low, Medium & High Wind Zones where roof pitch $\leq 10^\circ$ (Excludes any soft edge or turn-down)	70 MIN
SITUATION 3 All roof pitches in Extra High zone. (Excludes any soft edge or turn-down)	90 MIN

GENERAL NOTE

Cavity battens or timber framing that contain copper must be separated from steel cladding by a strip of wall or roof underlay or DPC.

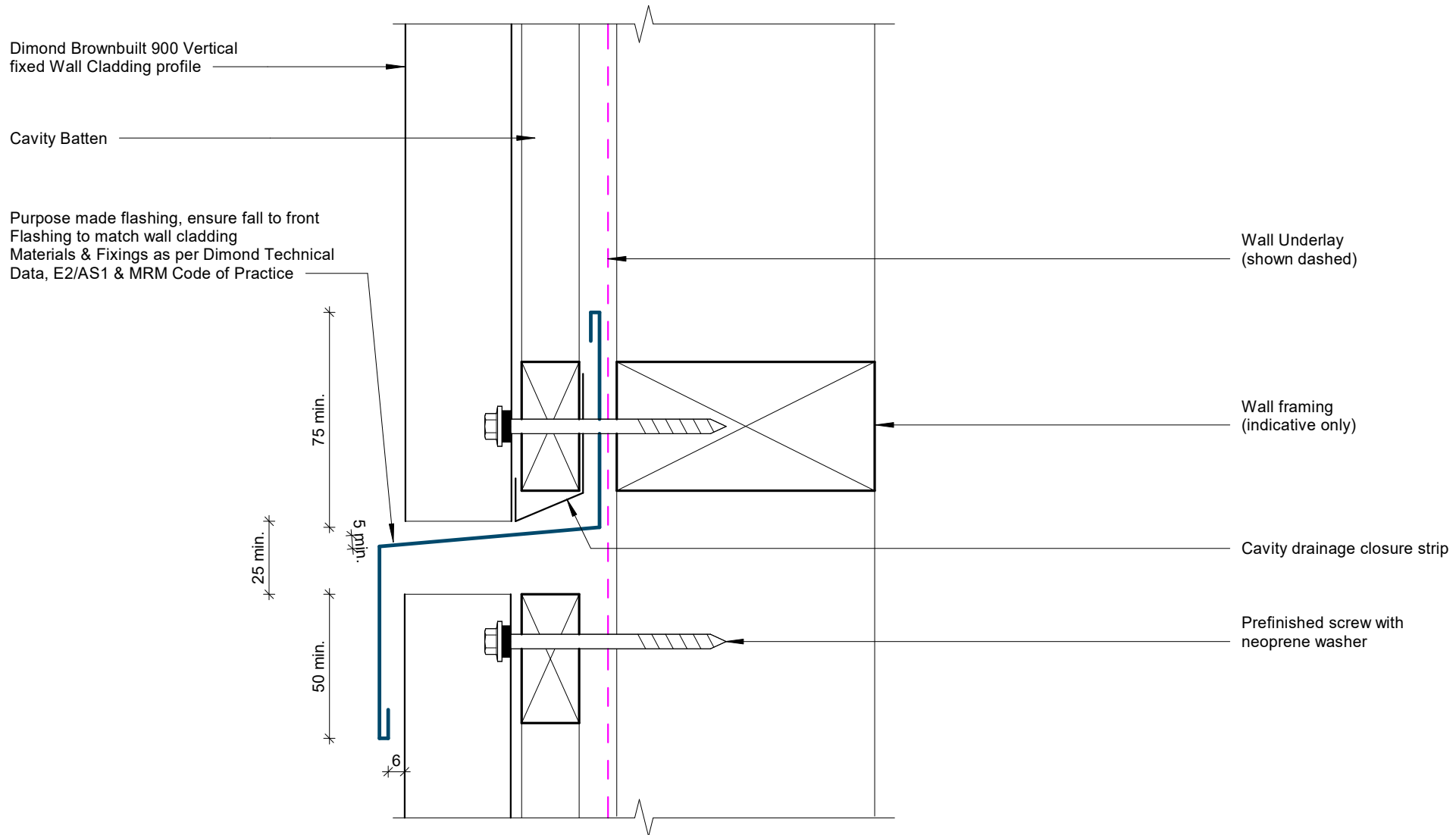
Barge Flashing Detail

Rev: 1 **Brownbuilt 900 Residential Vertical Cladding**



©Dimond 2023, all rights reserved. The information and specifications contained in this document are proprietary to Dimond and may not be used other than for the purpose of designing or building a roof or roofing system solely using products supplied or approved by Dimond ("Permitted Purpose"). You may copy this document solely for the Permitted Purpose, but may not otherwise copy, publish, distribute or modify this document without Dimond's prior written consent. Dimond will not be liable for any use of this document or information and specifications contained in this document, other than for the Permitted Purpose

Date: Jun 2025 Scale: 1 : 2 Sheet: **BRVC03**



GENERAL NOTE

Cavity battens or timber framing that contain copper must be separated from steel cladding by a strip of wall or roof underlay or DPC.

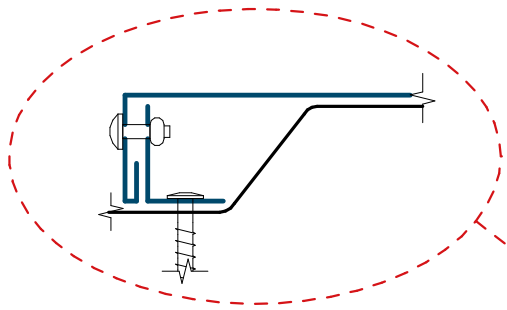
Transverse Junction Detail

Rev: 1 **Brownbuilt 900 Residential Vertical Cladding**

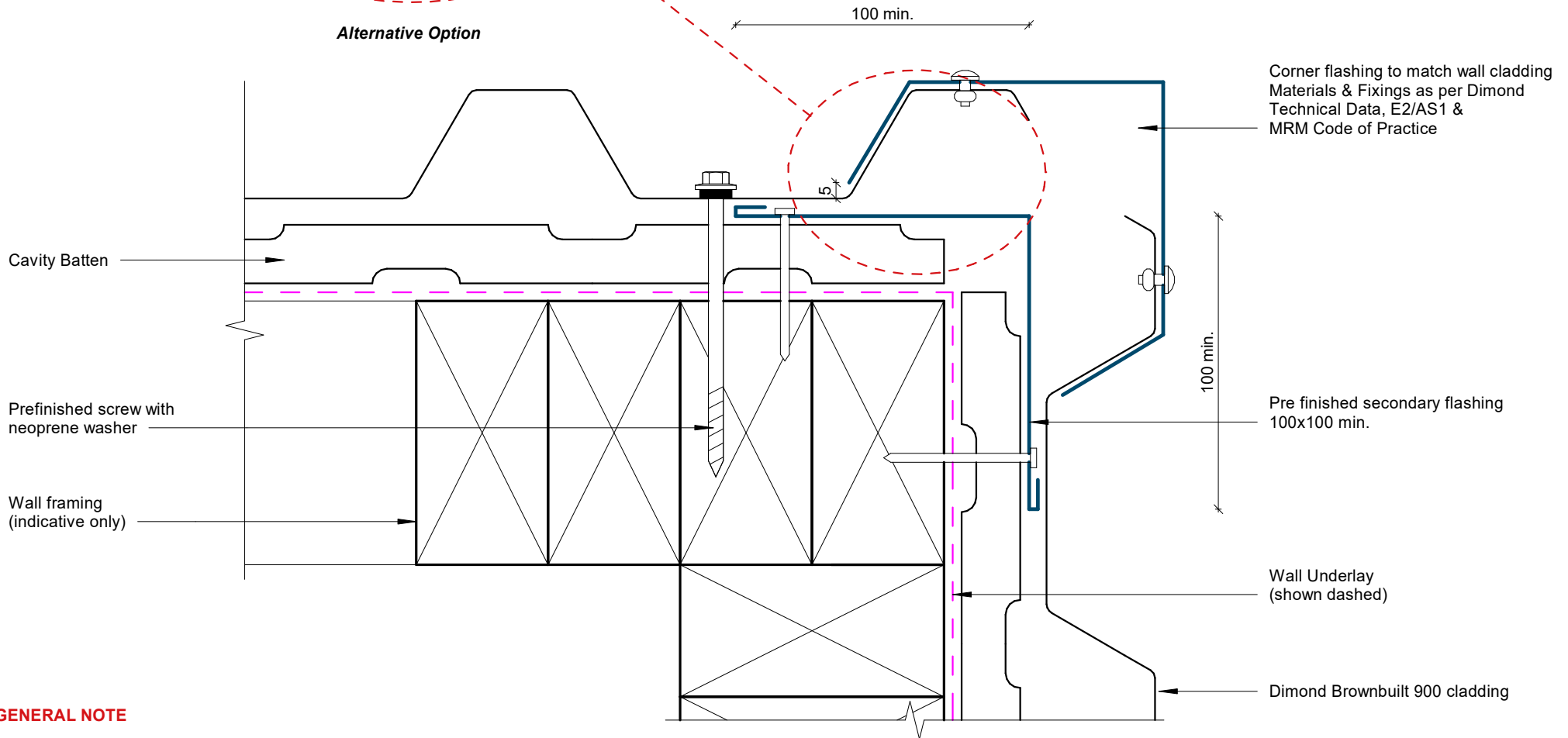


©Dimond 2023, all rights reserved. The information and specifications contained in this document are proprietary to Dimond and may not be used other than for the purpose of designing or building a roof or roofing system solely using products supplied or approved by Dimond ("Permitted Purpose"). You may copy this document solely for the Permitted Purpose, but may not otherwise copy, publish, distribute or modify this document without Dimond's prior written consent. Dimond will not be liable for any use of this document or information and specifications contained in this document, other than for the Permitted Purpose

Date: Jun 2025 Scale: 1 : 2 Sheet: **BRVC04**



Alternative Option

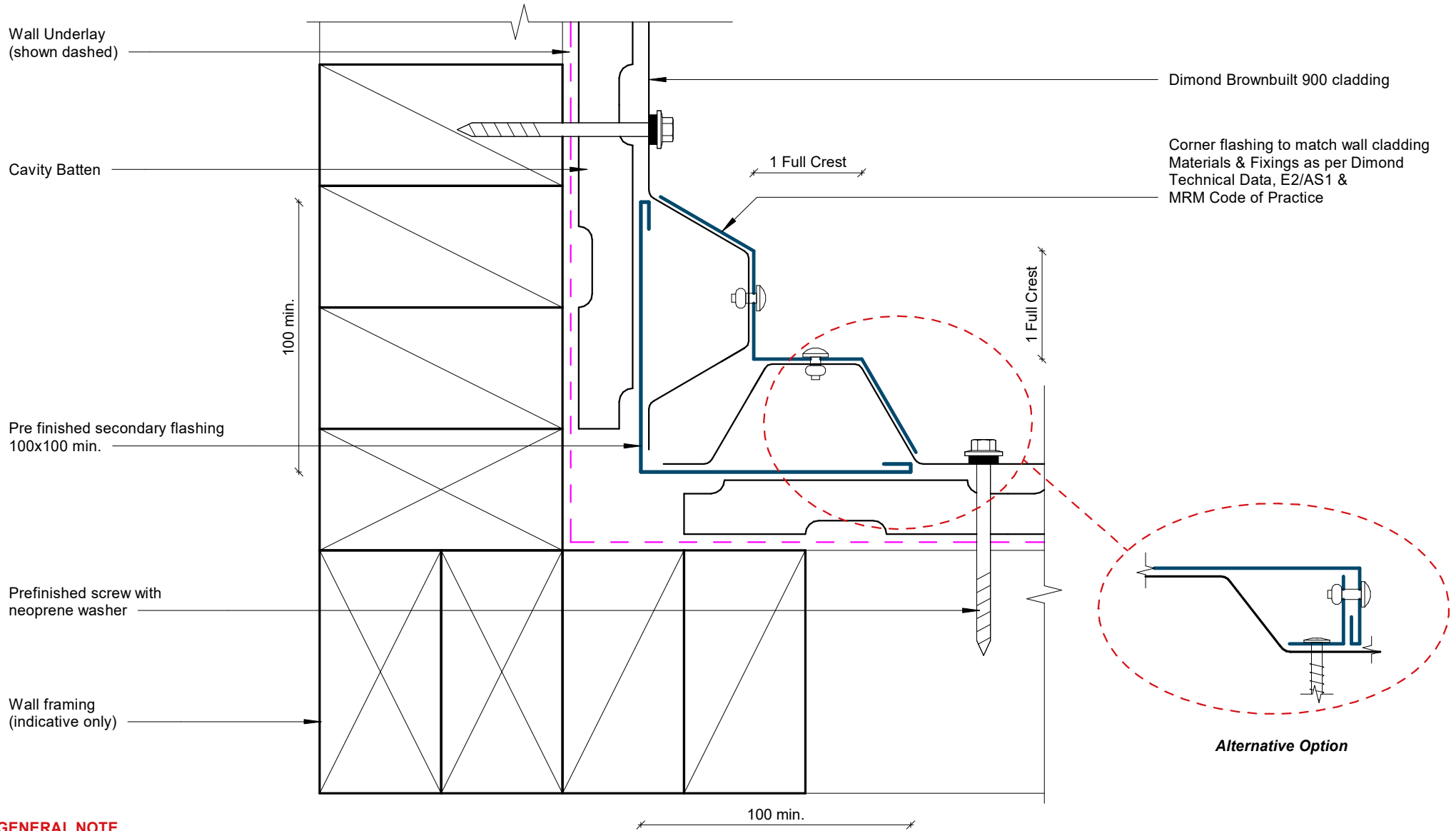


GENERAL NOTE

Cavity battens or timber framing that contain copper must be separated from steel cladding by a strip of wall or roof underlay or DPC.

External Corner Detail

Rev: 1 **Brownbuilt 900 Residential Vertical Cladding**

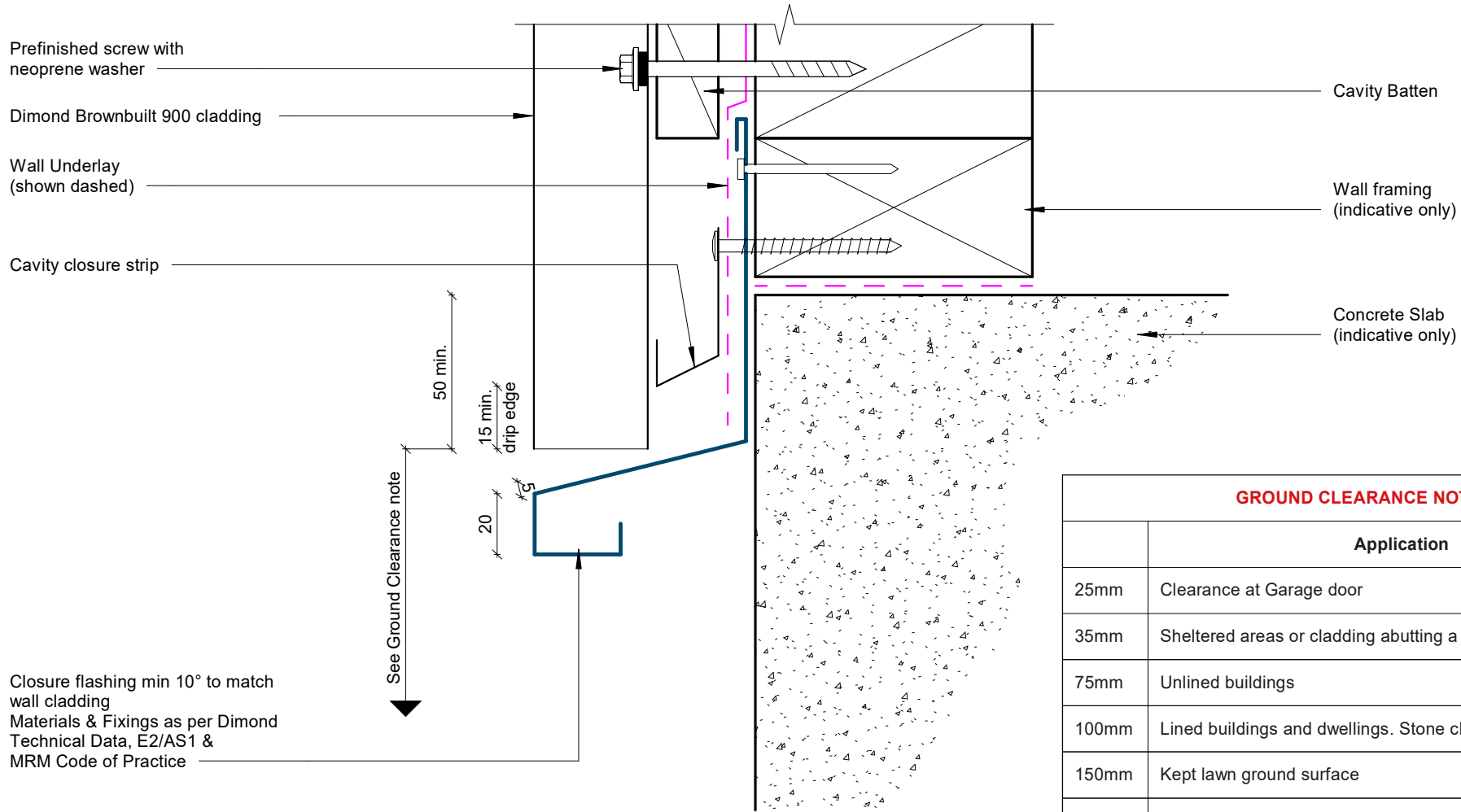


GENERAL NOTE

Cavity battens or timber framing that contain copper must be separated from steel cladding by a strip of wall or roof underlay or DPC.

Internal Corner Detail

Rev: 1 **Brownbuilt 900 Residential Vertical Cladding**



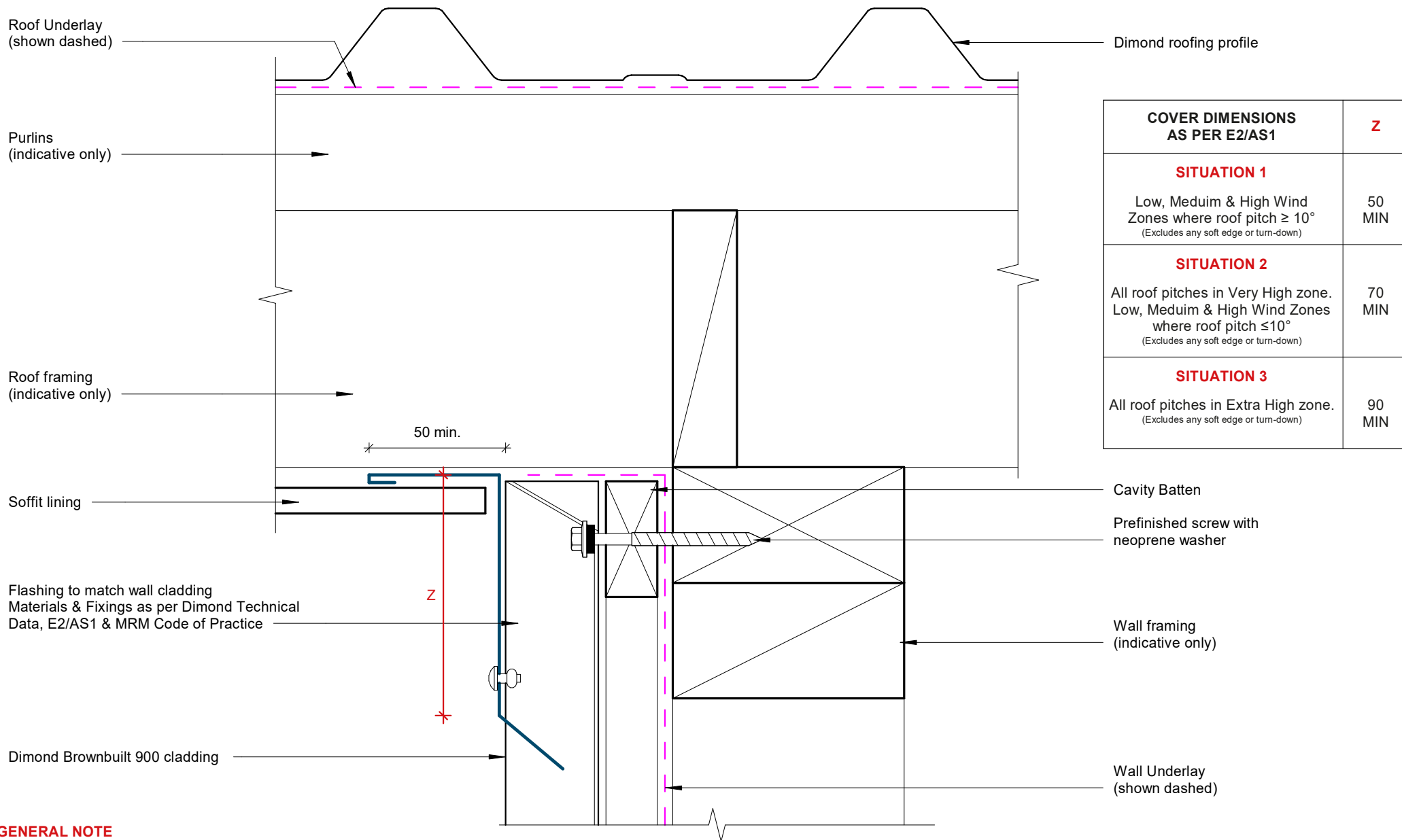
GROUND CLEARANCE NOTE

Application	
25mm	Clearance at Garage door
35mm	Sheltered areas or cladding abutting a deck
75mm	Unlined buildings
100mm	Lined buildings and dwellings. Stone chip ground surface
150mm	Kept lawn ground surface
175mm	Pasture ground surface

GENERAL NOTE

Cavity battens or timber framing that contain copper must be separated from steel cladding by a strip of wall or roof underlay or DPC.

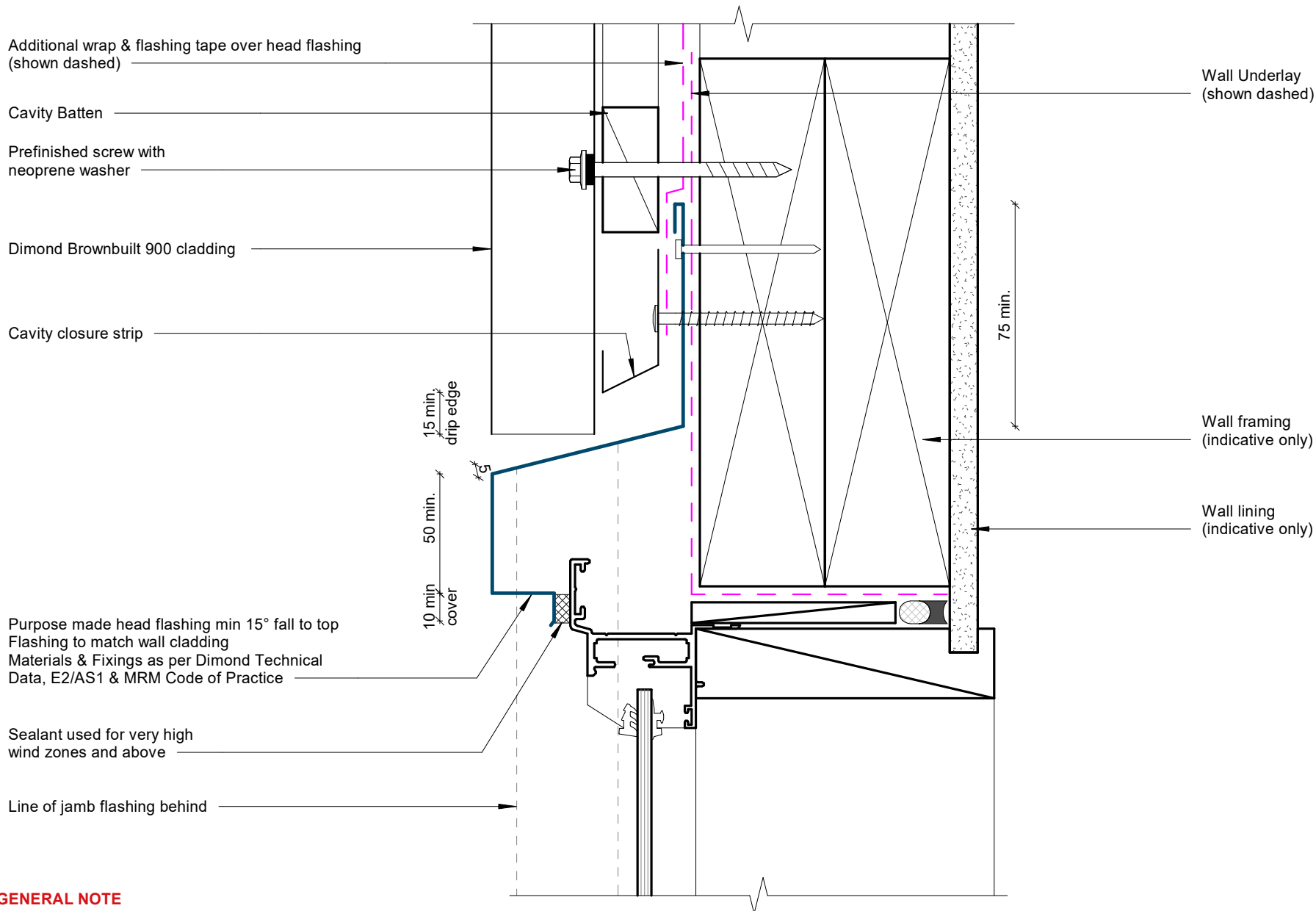
Base Detail



GENERAL NOTE

Cavity battens or timber framing that contain copper must be separated from steel cladding by a strip of wall or roof underlay or DPC.

Soffit Detail



GENERAL NOTE

Cavity battens or timber framing that contain copper must be separated from steel cladding by a strip of wall or roof underlay or DPC.

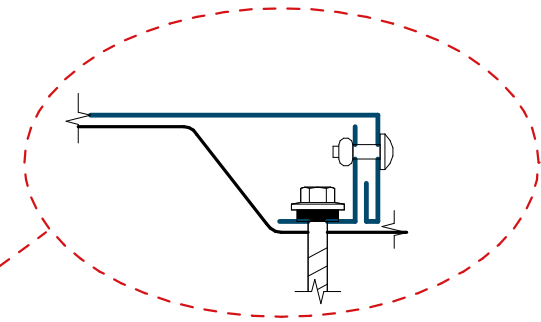
Window Head Detail

Rev: 1 **Brownbuilt 900 Residential Vertical Cladding**

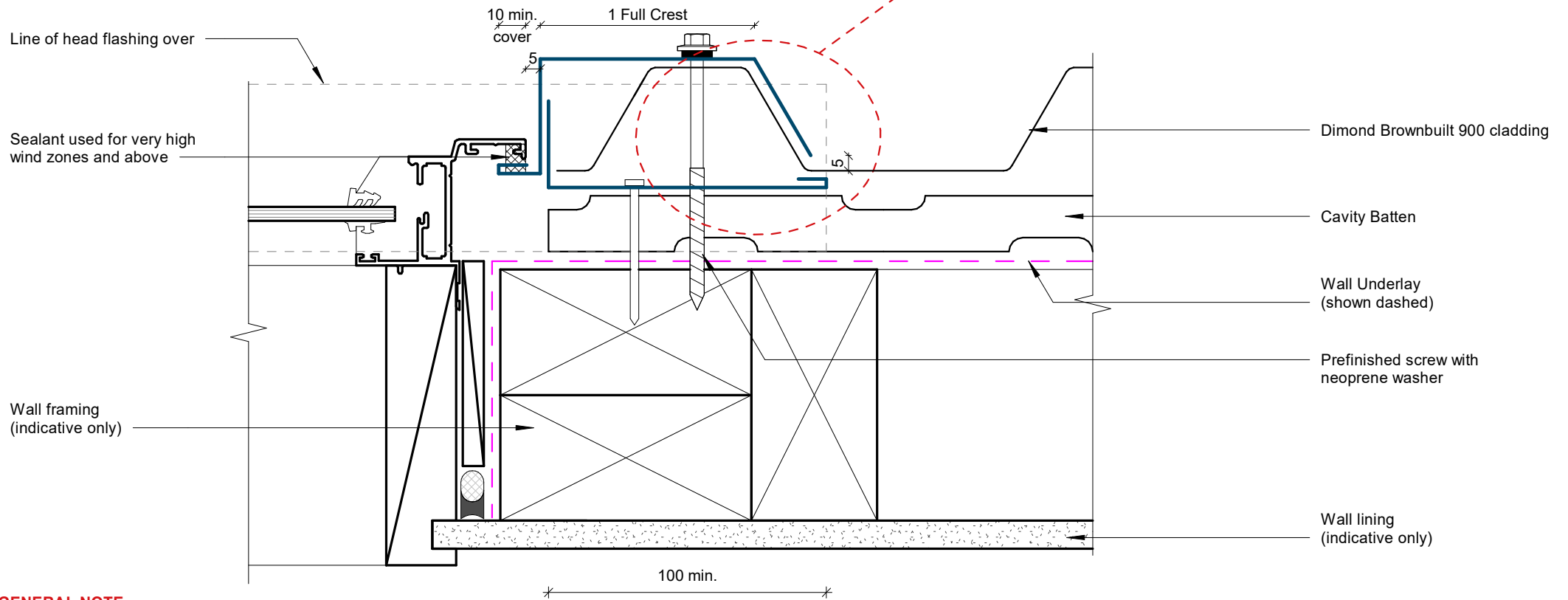


©Dimond 2023, all rights reserved. The information and specifications contained in this document are proprietary to Dimond and may not be used other than for the purpose of designing or building a roof or roofing system solely using products supplied or approved by Dimond ("Permitted Purpose"). You may copy this document solely for the Permitted Purpose, but may not otherwise copy, publish, distribute or modify this document without Dimond's prior written consent. Dimond will not be liable for any use of this document or information and specifications contained in this document, other than for the Permitted Purpose

Date: Jun 2025 Scale: 1 : 2 Sheet: **BRVC09**



Alternative Option



GENERAL NOTE

Cavity battens or timber framing that contain copper must be separated from steel cladding by a strip of wall or roof underlay or DPC.

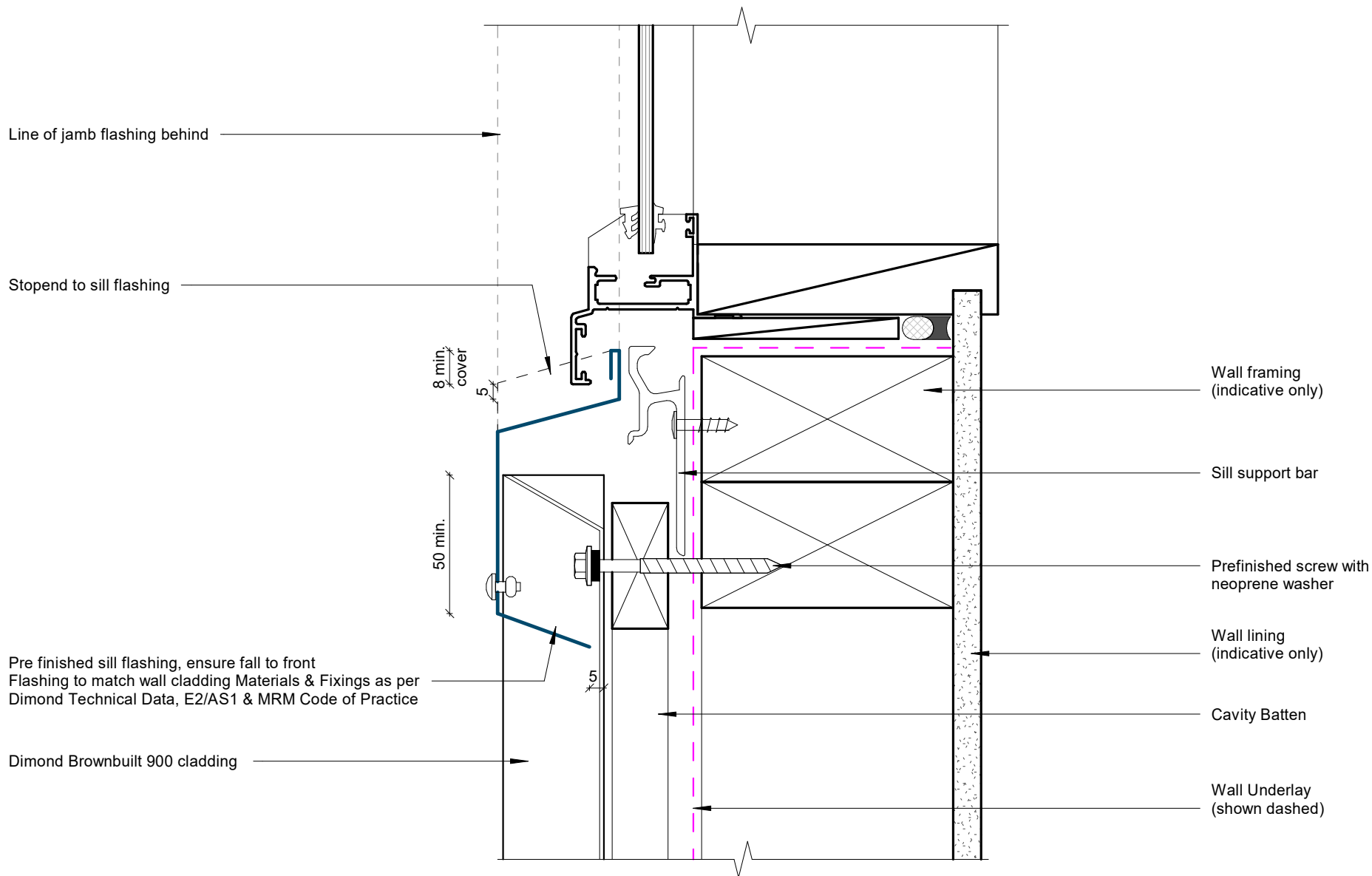
Window Jamb Detail

Rev: 1 **Brownbuilt 900 Residential Vertical Cladding**



©Dimond 2023, all rights reserved. The information and specifications contained in this document are proprietary to Dimond and may not be used other than for the purpose of designing or building a roof or roofing system solely using products supplied or approved by Dimond ("Permitted Purpose"). You may copy this document solely for the Permitted Purpose, but may not otherwise copy, publish, distribute or modify this document without Dimond's prior written consent. Dimond will not be liable for any use of this document or information and specifications contained in this document, other than for the Permitted Purpose

Date: Jun 2025 Scale: 1 : 2 Sheet: **BRVC10**

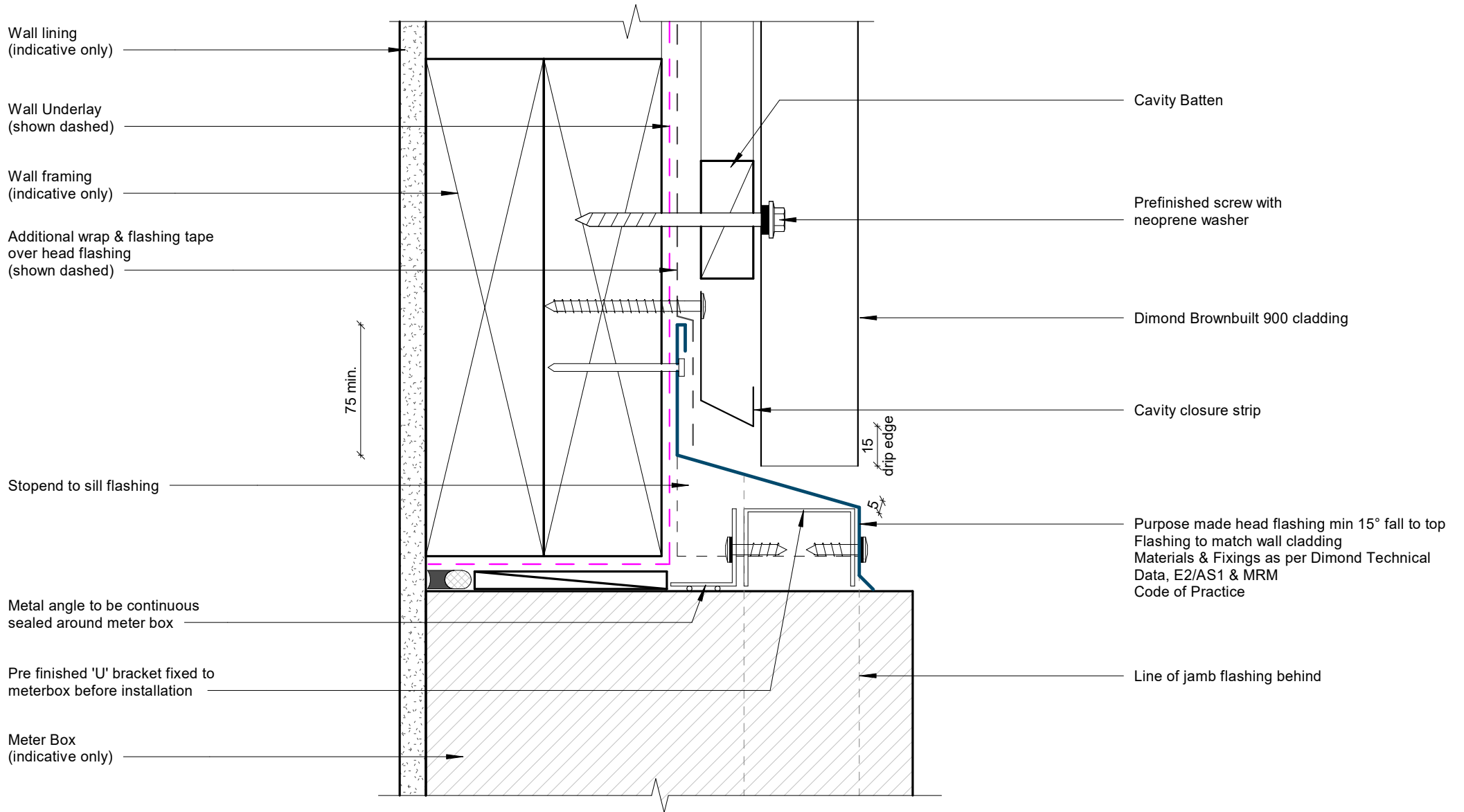


GENERAL NOTE

Cavity battens or timber framing that contain copper must be separated from steel cladding by a strip of wall or roof underlay or DPC.

Window Sill Detail

Rev: 1 **Brownbuilt 900 Residential Vertical Cladding**

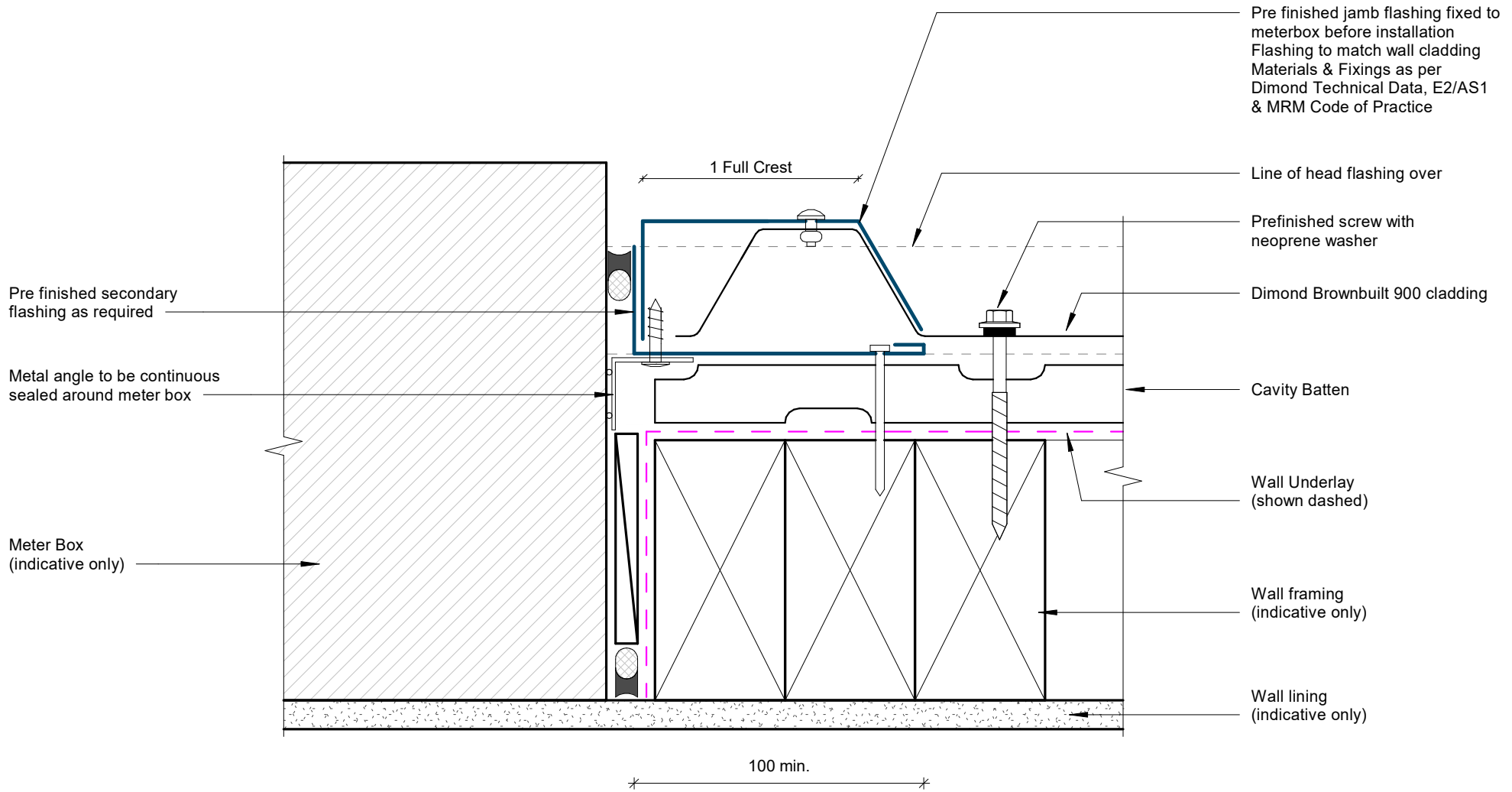


GENERAL NOTE

Cavity battens or timber framing that contain copper must be separated from steel cladding by a strip of wall or roof underlay or DPC.

Meterbox Head Detail

Rev: 1 **Brownbuilt 900 Residential Vertical Cladding**

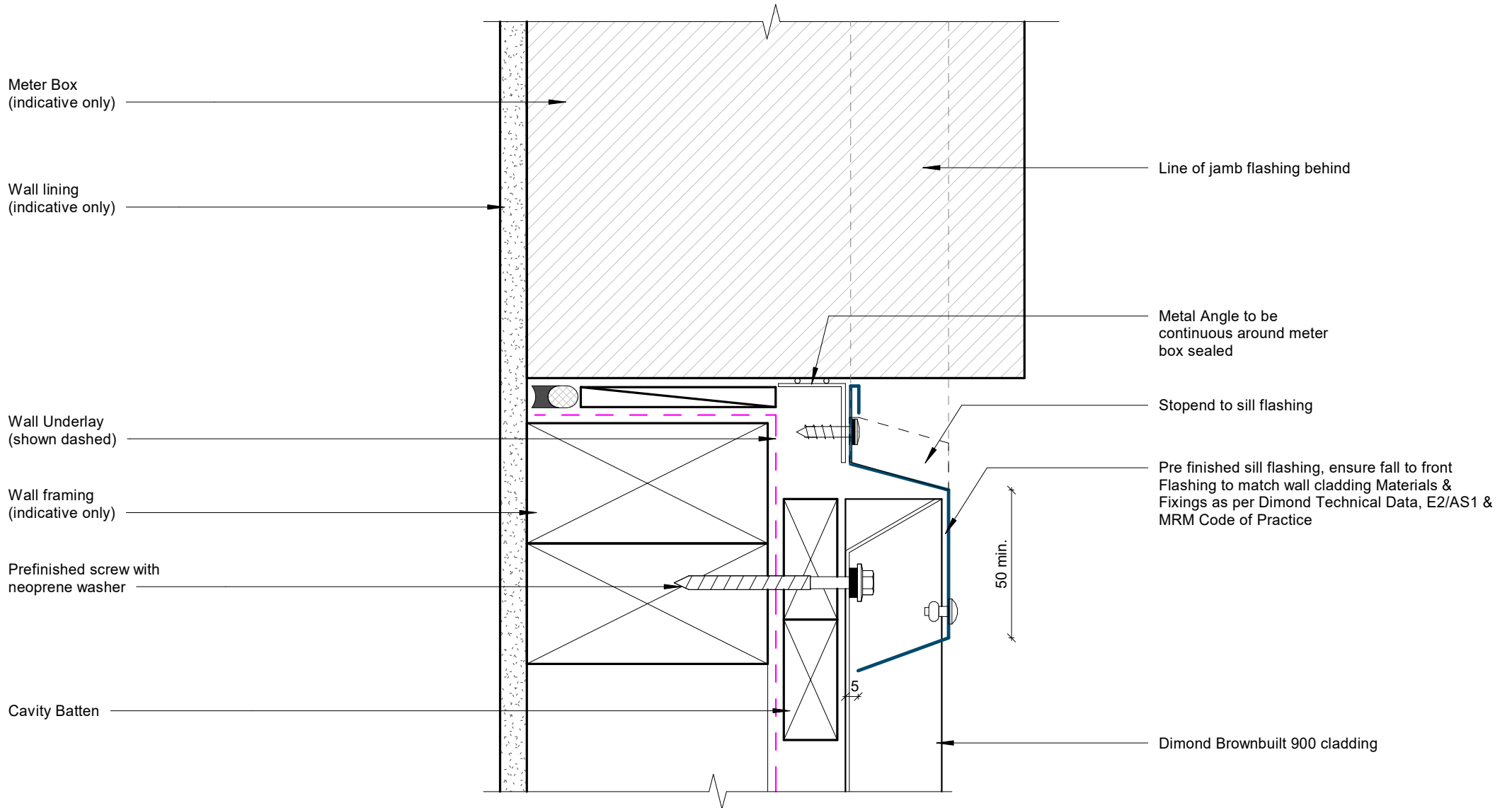


GENERAL NOTE

Cavity battens or timber framing that contain copper must be separated from steel cladding by a strip of wall or roof underlay or DPC.

Meterbox Jamb Detail

Rev: 1 **Brownbuilt 900 Residential Vertical Cladding**

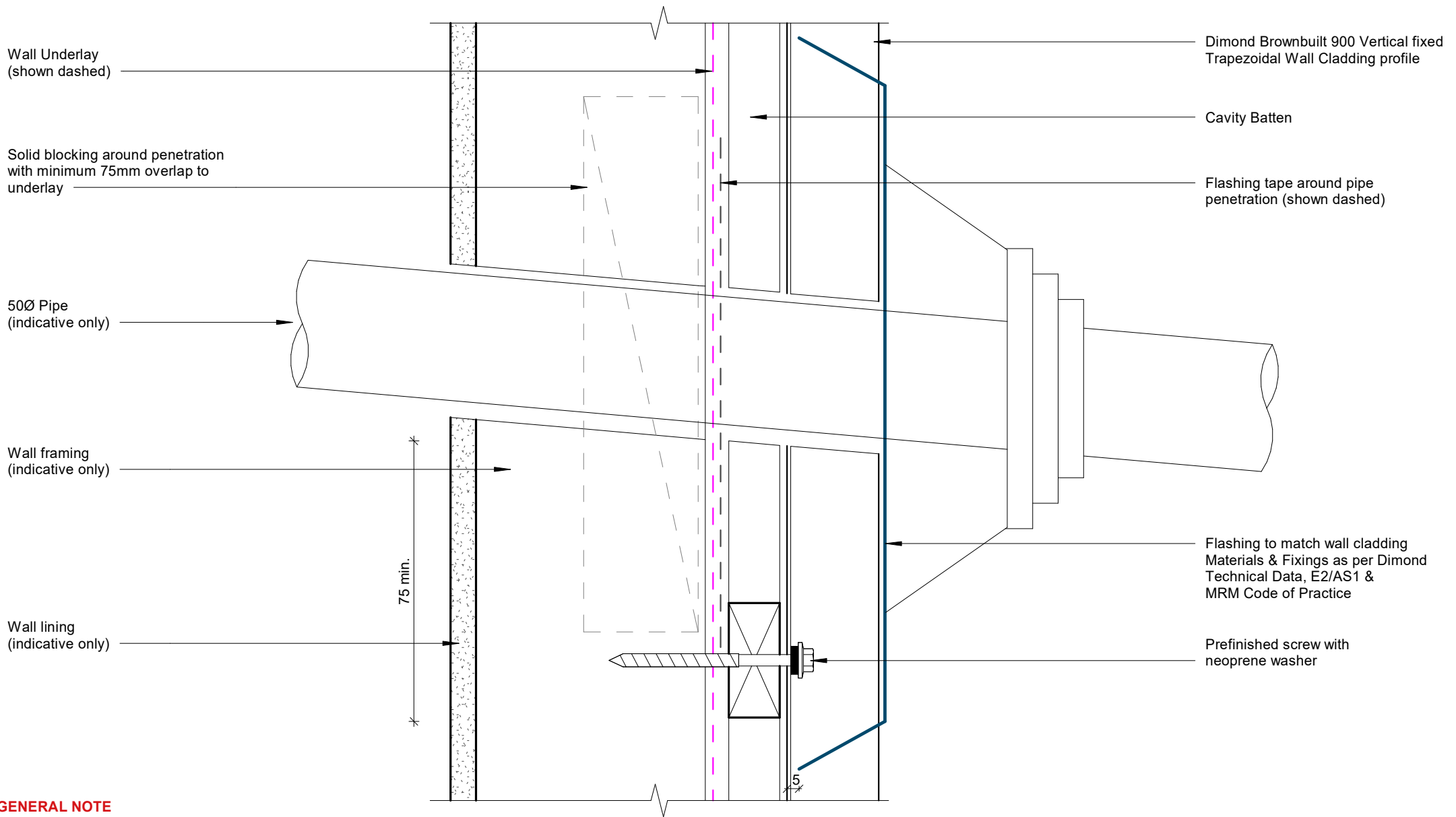


GENERAL NOTE

Cavity battens or timber framing that contain copper must be separated from steel cladding by a strip of wall or roof underlay or DPC.

Meterbox Sill Detail

Rev: 1 **Brownbuilt 900 Residential Vertical Cladding**

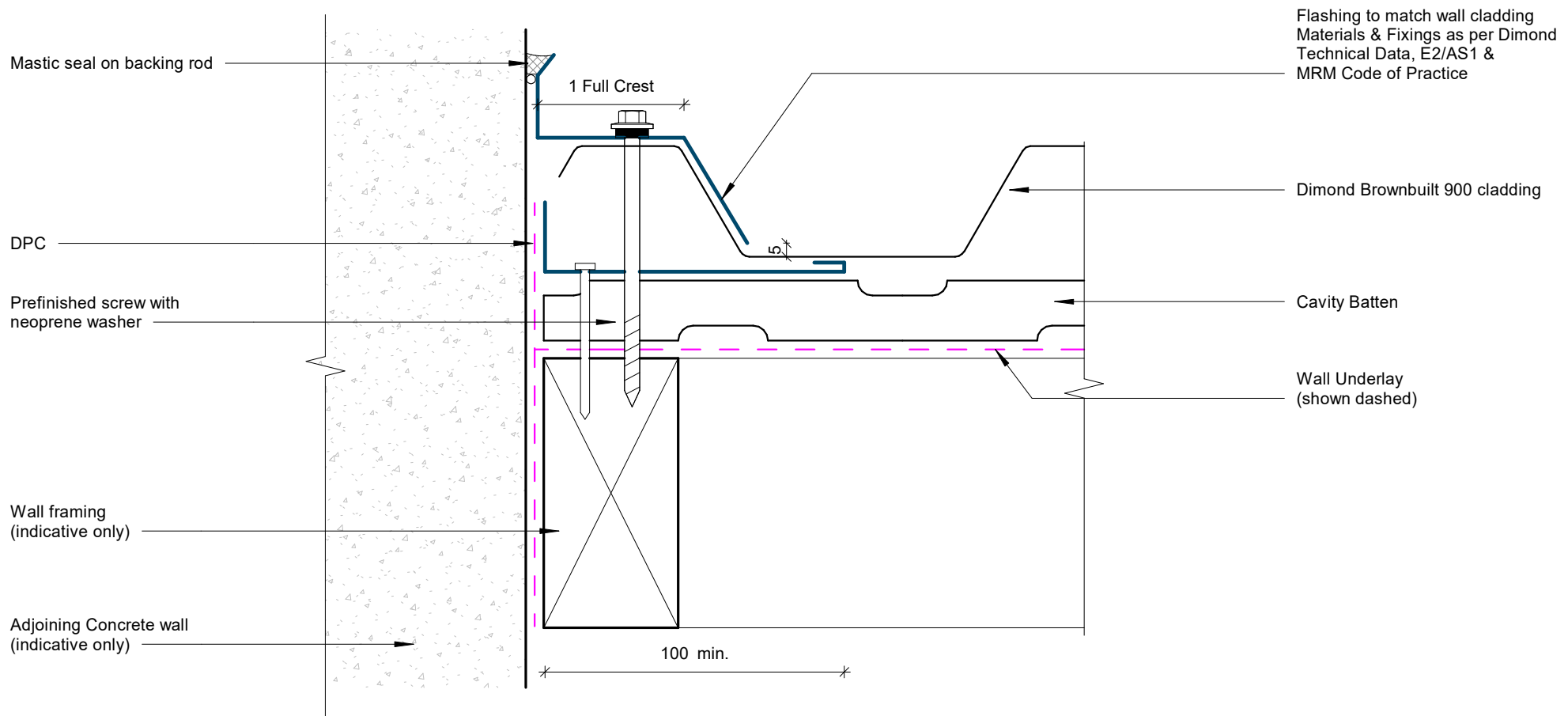


GENERAL NOTE

Cavity battens or timber framing that contain copper must be separated from steel cladding by a strip of wall or roof underlay or DPC.

Pipe Penetration Detail

Rev: 1 **Brownbuilt 900 Residential Vertical Cladding**



GENERAL NOTE

Cavity battens or timber framing that contain copper must be separated from steel cladding by a strip of wall or roof underlay or DPC.

Cladding to Concrete Junction Detail

Rev: 1 **Brownbuilt 900 Residential Vertical Cladding**

Adjoining Brick veneer on cavity
(indicative only)

Mastic seal on backing rod

Rawplug

1 Full Crest

Flashing to match wall cladding
Materials & Fixings as per Dimond
Technical Data, E2/AS1 &
MRM Code of Practice

Dimond Brownbuilt 900 cladding

Cavity Batten

Wall Underlay
(shown dashed)

Prefinished screw with
neoprene washer

Wall framing
(indicative only)

100 min.

GENERAL NOTE

Cavity battens or timber framing that contain copper must be separated from steel cladding by a strip of wall or roof underlay or DPC.

Cladding to Brick Junction Detail

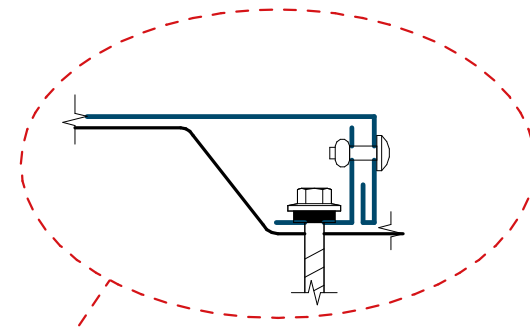
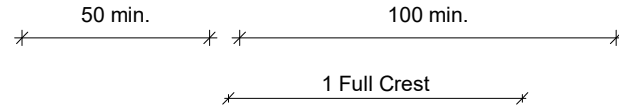
Rev: 1 Brownbuilt 900 Residential Vertical Cladding

Flashing to match wall cladding
Materials & Fixings as per Dimond
Technical Data, E2/AS1 &
MRM Code of Practice

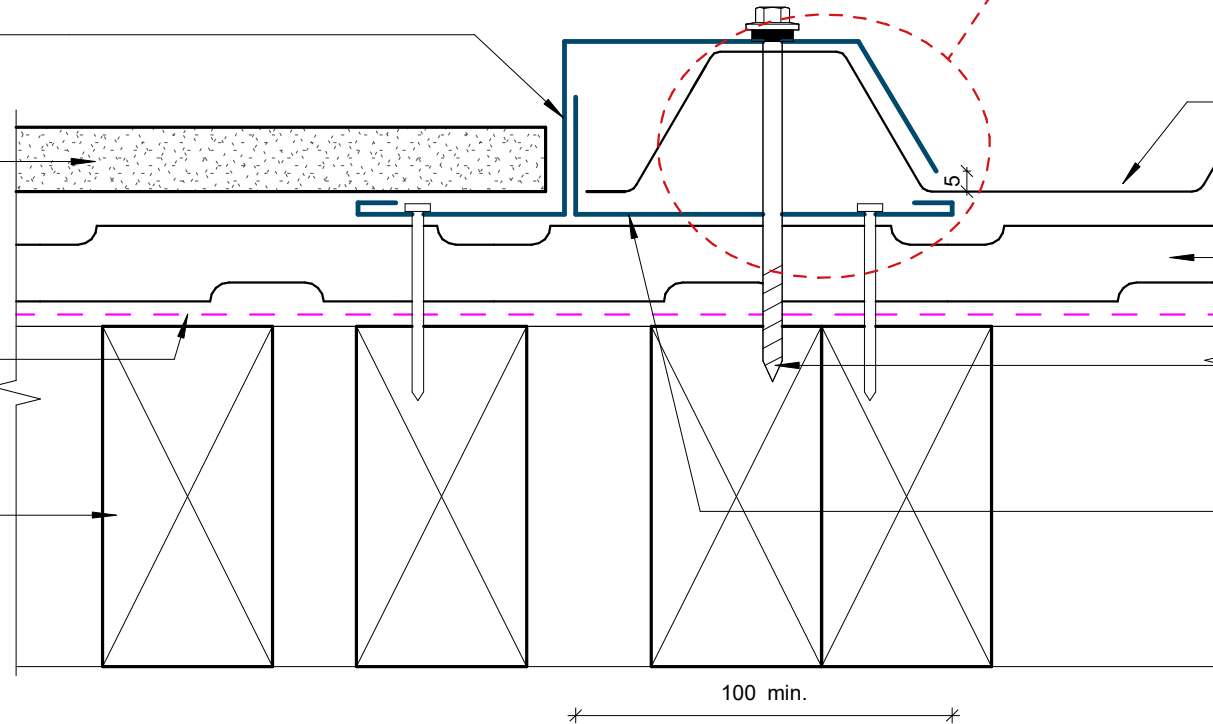
Adjoining Panel
Cladding on cavity
(indicative only)

Wall Underlay
(shown dashed)

Wall framing
(indicative only)



Alternative Option



Dimond Brownbuilt 900 cladding

Cavity Batten

Prefinished screw with
neoprene washer

Pre finished
secondary flashing

GENERAL NOTE

Cavity battens or timber framing that contain copper must be separated from steel cladding by a strip of wall or roof underlay or DPC.

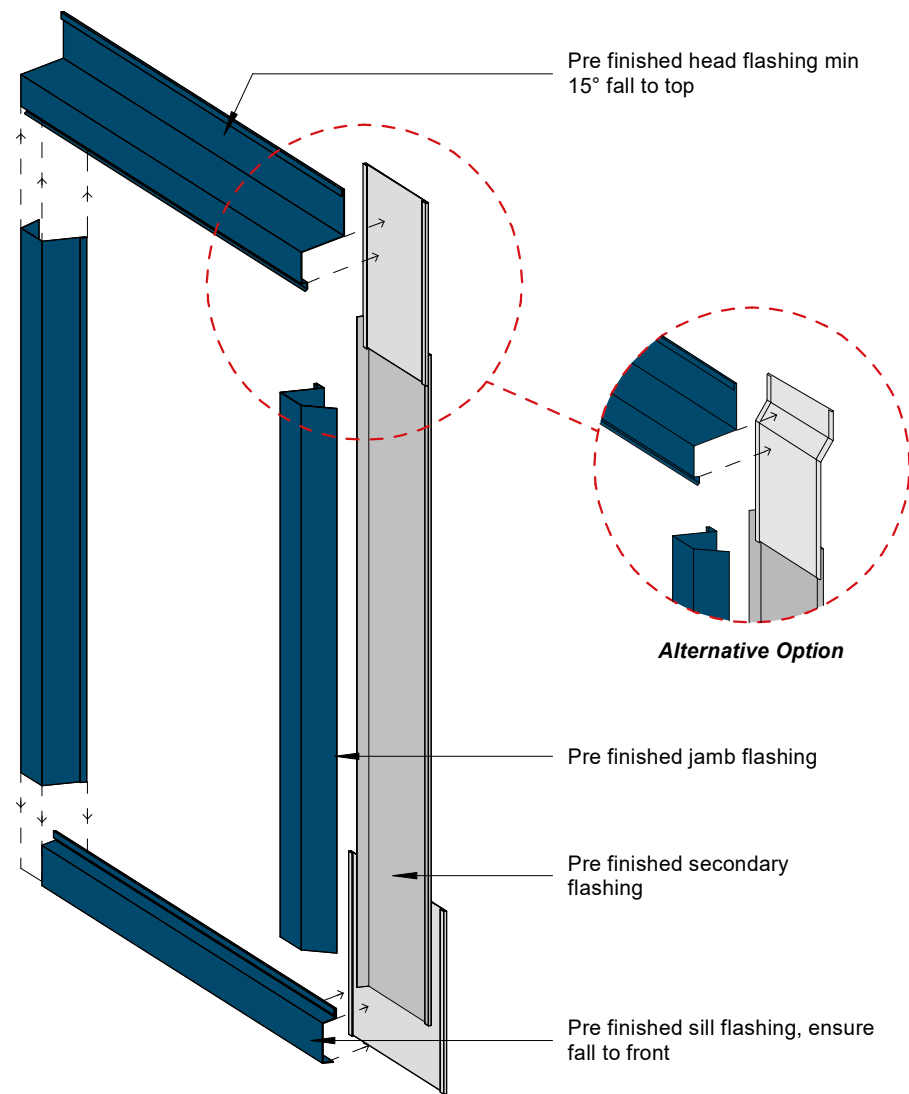
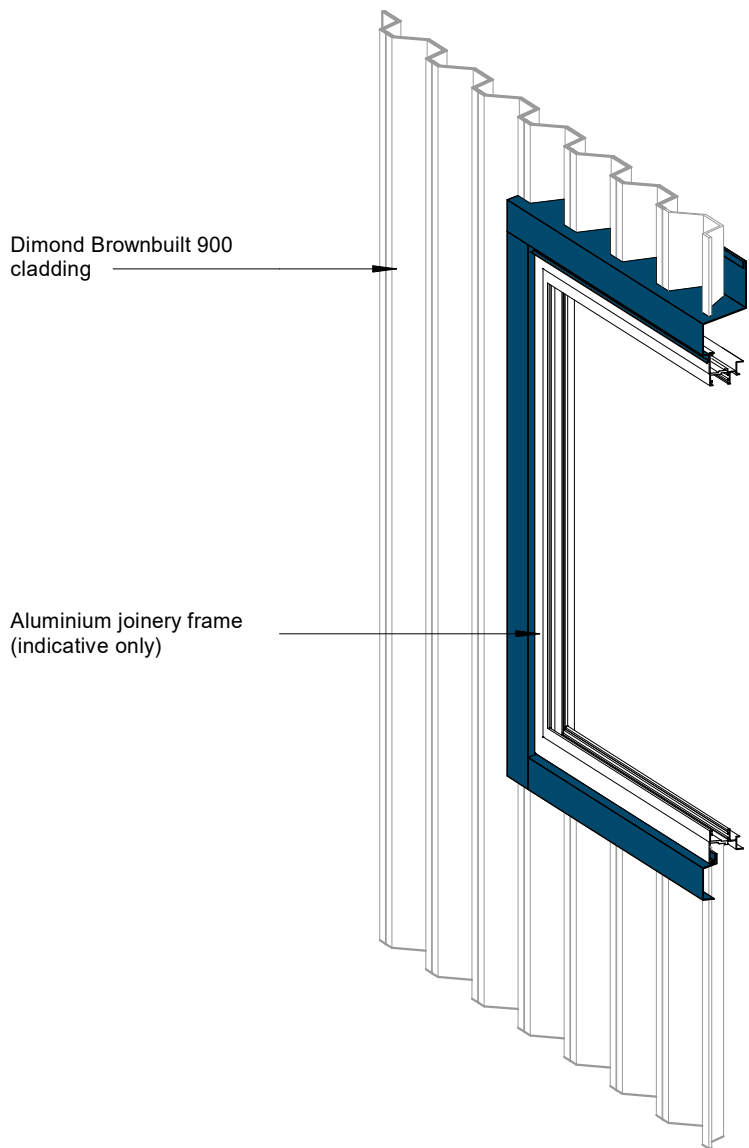
Cladding to Panel Junction Detail

Rev: 1 **Brownbuilt 900 Residential Vertical Cladding**



©Dimond 2023, all rights reserved. The information and specifications contained in this document are proprietary to Dimond and may not be used other than for the purpose of designing or building a roof or roofing system solely using products supplied or approved by Dimond ("Permitted Purpose"). You may copy this document solely for the Permitted Purpose, but may not otherwise copy, publish, distribute or modify this document without Dimond's prior written consent. Dimond will not be liable for any use of this document or information and specifications contained in this document, other than for the Permitted Purpose

Date: Jun 2025 Scale: 1 : 2 Sheet: **BRVC18**



GENERAL NOTE

Cavity battens or timber framing that contain copper must be separated from steel cladding by a strip of wall or roof underlay or DPC.

Flashing to match wall cladding

Materials & Fixings as per Dimond Technical Data, E2/AS1 & MRM Code of Practice

3D Window Flashing Detail

Rev: 1 Brownbuilt 900 Residential Vertical Cladding