

Dimond roofing (specify profile, thickness and coating) fixed to Dimond roof rail with 12g hex head tek screw (Length to suit profile)

175x175x125 or 175x300x125 Dimond fascia gutter

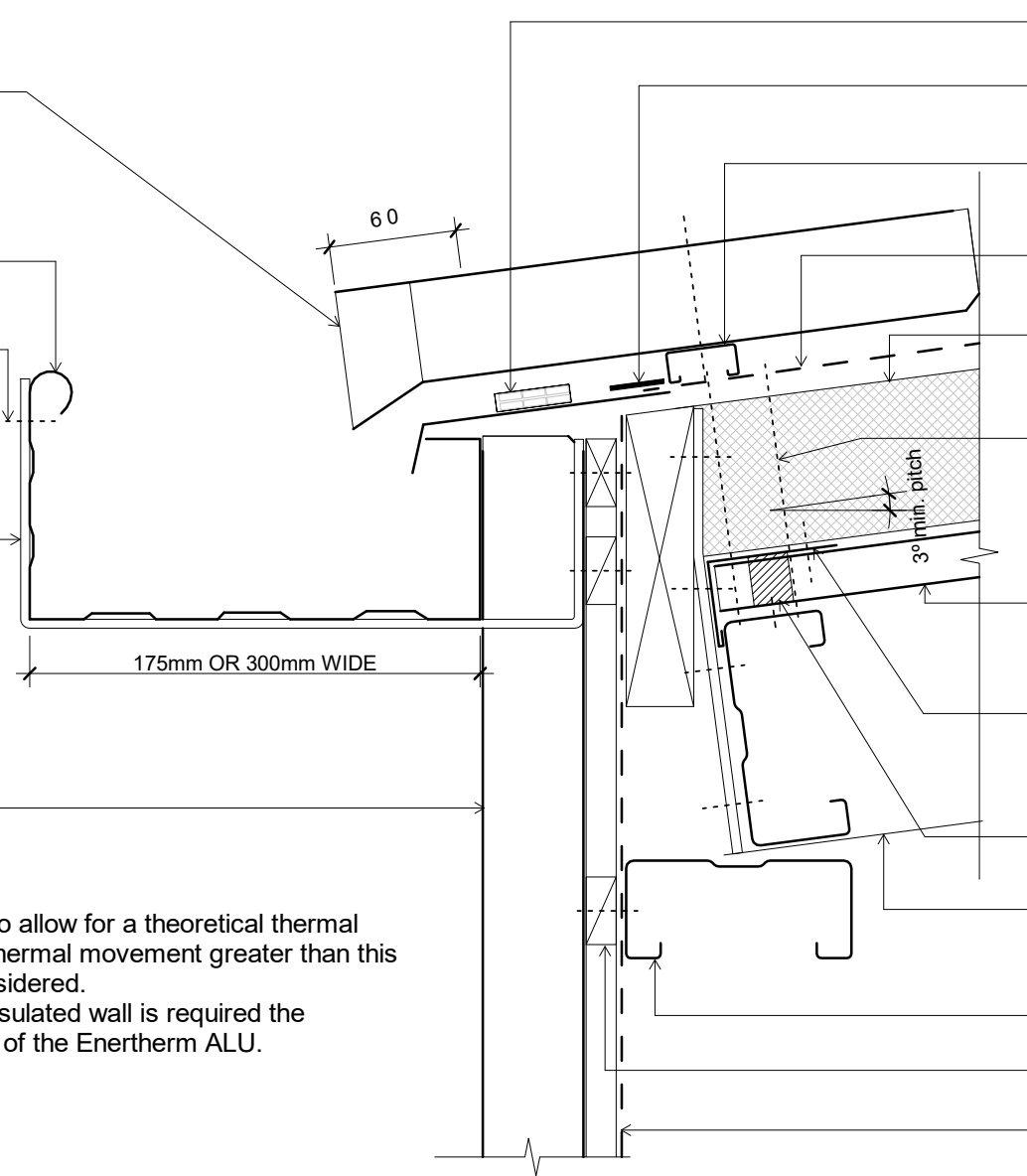
6mm diameter 20mm long g.m.s. gutter bolt

Extended 6mm flat galvanised external gutter bracket fixed at 600mm c/c max. laid to fall

Dimond wall cladding (specify thickness and coating)

Notes:

- These details are suitably fixed to allow for a theoretical thermal movement of up to 10mm. For thermal movement greater than this a clipping system should be considered.
- Non Insulated wall shown. If a Insulated wall is required the Insulation must run up to the top of the Enertherm ALU.



Cavibat cavity closure

Seal Solitex Mento 1000 to flashing with Pro Clima Duplex

Dimond Galvanised Roof Rail laid and fixed over every purlin

Solitex Mento 1000 connect underlay laid vertically over PIR

Enertherm ALU Rigid Insulation. Depth as specified

Hex head 14g - 10x Length (Depending on Enertherm thickness specified) @ 150 centres

NPM 900 metal tray fixed with 12g x 20 tek screw every pan

Flashing to Fire Engineers design. For group number 2 or 3. For group 1s or 2s contact Dimond Roofing.

Wide tipped profiled foam under & narrow tipped foam on top of NPM 900

Structure

Dimond HI-Span steel purlin (specify size)

20mm cavity battens

Wall underlay shown dashed (If required)

Original Size A4



Tricore Roof

Eaves Box Gutter with Cavity

Issue: 03	Reference
Scale: 1 : 5	
Date: 31 November 2019	
dim_tri_1041	