

H3.1 timber capping support ex  
50mm on dpc

Climaseal screw fixed @ 600 c/c  
max. M6 x 50mm roofzip

Fix capping to concrete with  
6.5mm x 20mm metal pin anchors  
@ 1000mm centers

0.55mm flashing (Specify coating)  
notched over profile and fixed with  
12g self drilling tek (length to suit  
profile)

Notching to have 3mm clearance  
around profile to allow for  
ventilation

Solitex Mento 1000 connect  
underlay laid vertically over PIR

Dimond roofing (specify profile,  
thickness and coating) fixed to  
Dimond roof rail with 12g hex head  
tek screw (Length to suit profile)

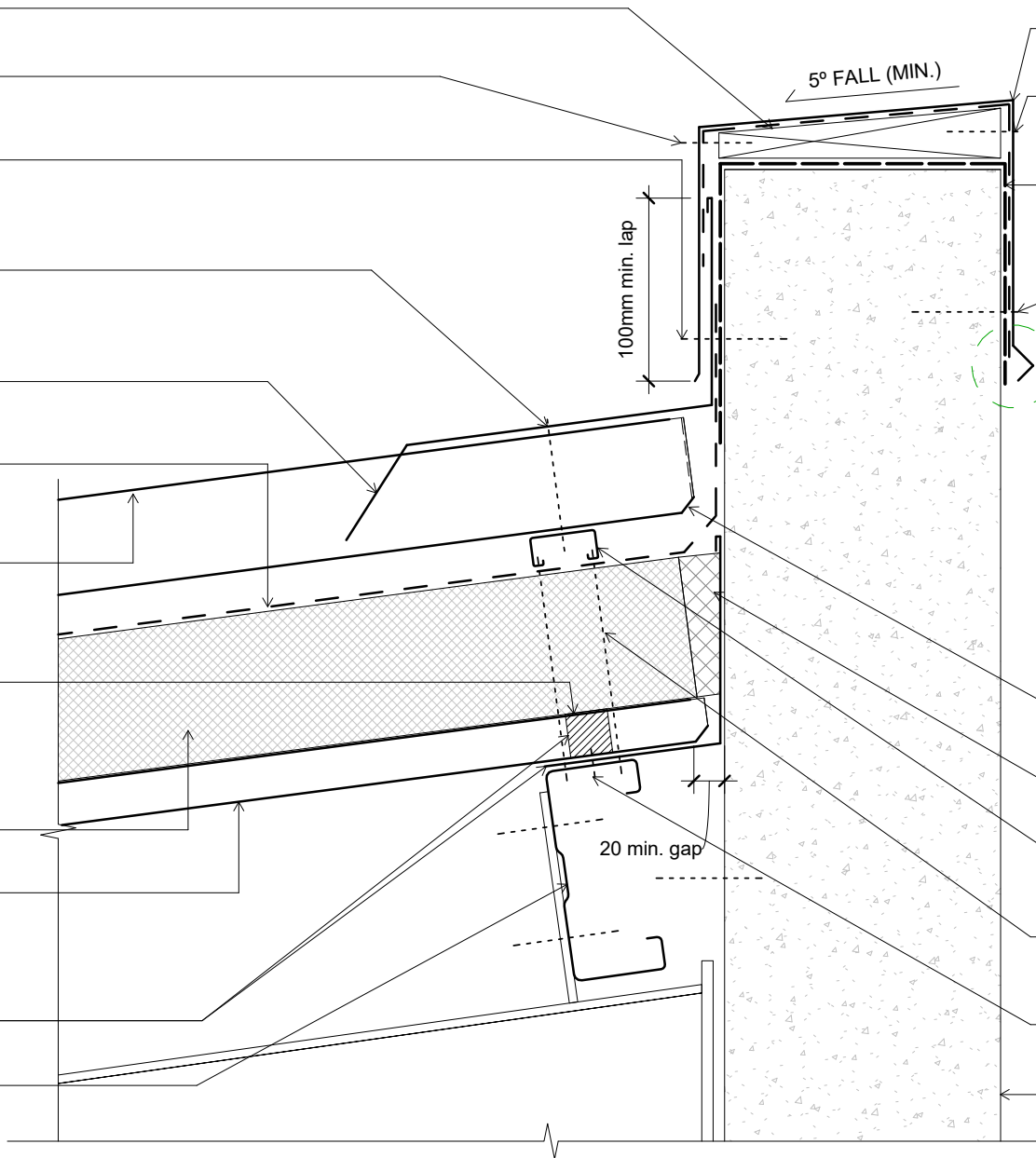
Wide tipped profiled foam under &  
narrow tipped foam on top of NPM  
900

Enertherm ALU rigid insulation  
thickness as specified

NPM 900 metal tray

Flashing and fire stop to fire  
Engineer design for group Number  
2 or 3. For Group 1s or 2s contact  
Dimond Roofing

Dimond HI-Span steel purlin  
(specify size)



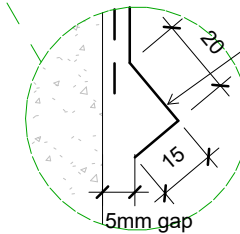
0.55mm parapet flashing (specify  
coating)

Climaseal screw fixed @ 600 c/c  
max. M6 x 50mm roofzip

Separation barrier with self  
adhesive tape or similar around  
concrete wall

Fix capping to concrete with  
6.5mm x 20mm metal pin anchors  
@ 1000mm centers

Cut edge must avoid contact with  
concrete. Avoid overpainting  
flashing to concrete joint.



Stop end sheet

Gap filled with foamed PU in a can  
on site

Dimond Galvanised Roof Rail laid  
and fixed over every purlin

Hex head 14g - 10x Length  
(Depending on Enertherm  
thickness specified) @ 150 centres

12g x 20mm tek screw pan fixed  
every pan

Concrete wall

Original Size A4

Issue: 03	Reference  <b>dim_tri_1010</b>
Scale: As indicated	
Date: 31 November 2019	