

H3.1 timber capping support ex
50mm on dpc

Climaseal screw fixed @ 600 c/c
max. M6 x 25mm roofzip

Fix capping to concrete with
6.5mm x 20mm metal pin anchors
@ 1000mm centers

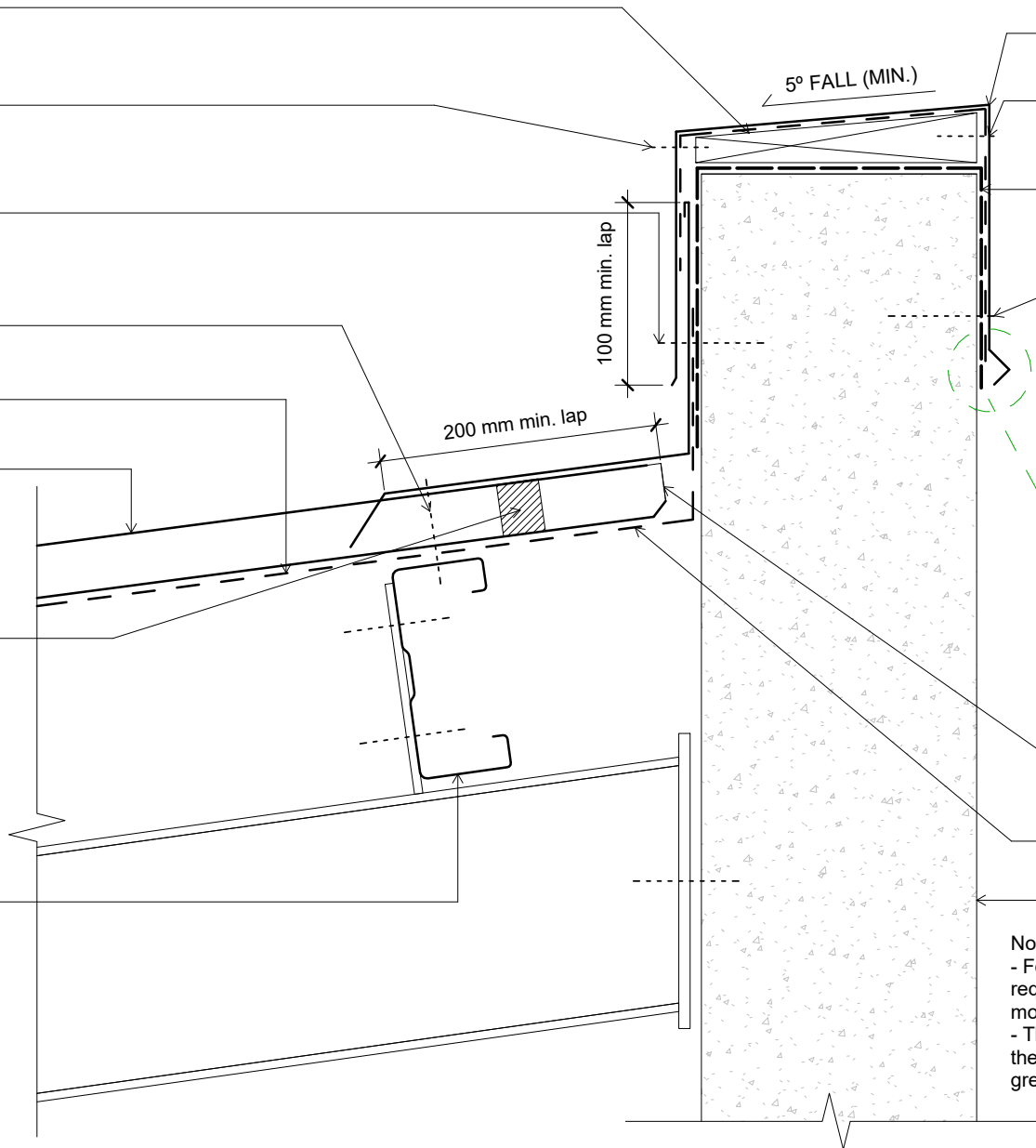
Notched flashing fixed to ribs with
M6 x 65mm Roofzip every second
rib

Roofing underlay and netting
shown dashed

Dimond LT5 Roofing (specify
thickness and coating)

Foam closure strip on top of
roofing (see note below)

Dimond hi-span steel purlin
(specify size)



0.55mm parapet flashing (specify
coating)

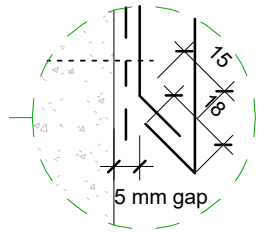
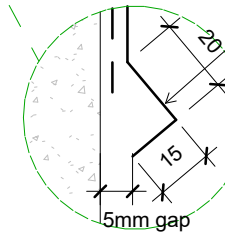
Climaseal screw fixed @ 600 c/c
max. M6 x 25mm roofzip

Separation barrier with self
adhesive tape or similar around
concrete wall

Fix capping to concrete with
6.5mm x 20mm metal pin anchors
@ 1000mm centers

Cut edge must avoid contact with
concrete. Avoid overpainting
flashing to concrete joint.

Alternative solution



Dimond LT5 roofing stop ended

Roofing underlay and netting
shown dashed

Concrete wall

Notes:

- Foam closure strip only required if bird or vermin proofing is required, or if in a high wind area, there is a risk of windblown moisture entering the building.
- These details are suitably fixed to allow for a theoretical thermal movement of up to 10mm. For thermal movement greater than this a clipping system should be considered.

Original Size A4

dim_lt5_1010 Parapet Detail	
Issue: 01	Reference dim_lt5_1010
Scale: As indicated	
Date: 20 December 2018	