

0.55mm flashing. Seal with silicone sealant and fix with 4mm dia rivets every 400mm to flashing and pan

Ventilation holes through plywood substrate. 30 dia holes @ 300 centres continuous

Barge flashing (thickness & coating to be specified)

Packing member

100mm

Cavity battens

H3 CD Plywood substrate & RAB board

Dimond Eurotray® Roll Cap cladding to wall (thickness & coating to be specified)

20mm vented cavity battens

Eurotray clip fixed with Type 17 12g x 65mm Screw

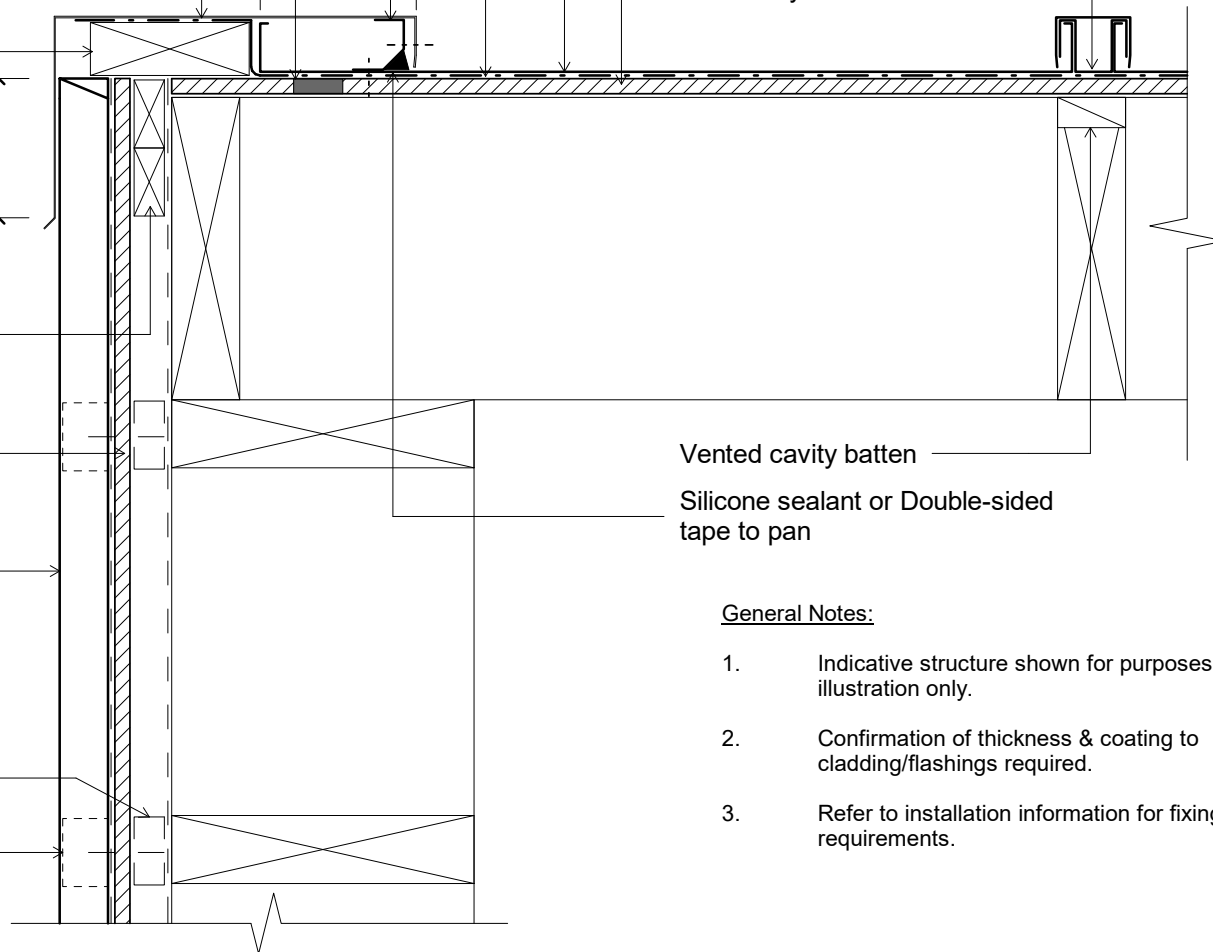
Eurotray clip fixed with Type 17 12g x 65mm Screw

Vented roof underlay

Dimond Eurotray® Roll Cap cladding (specify thickness and coating)

H3 CD Plywood substrate

180mm



General Notes:

1. Indicative structure shown for purposes of illustration only.
2. Confirmation of thickness & coating to cladding/flashings required.
3. Refer to installation information for fixing requirements.

Original Size A4

dim_etc_4170 Barge Flashing Fixing	
Issue: 01	Reference
Scale: 1 : 5	
Date: 5 February 2019	
dim_etc_4170	