

H3.1 timber capping support ex  
50mm on dpc

Climaseal screw fixed @ 600 c/c  
max. M6 x 25mm roofzip

Fix capping to concrete with  
6.5mm x 20mm metal pin anchors  
@ 1000mm centers

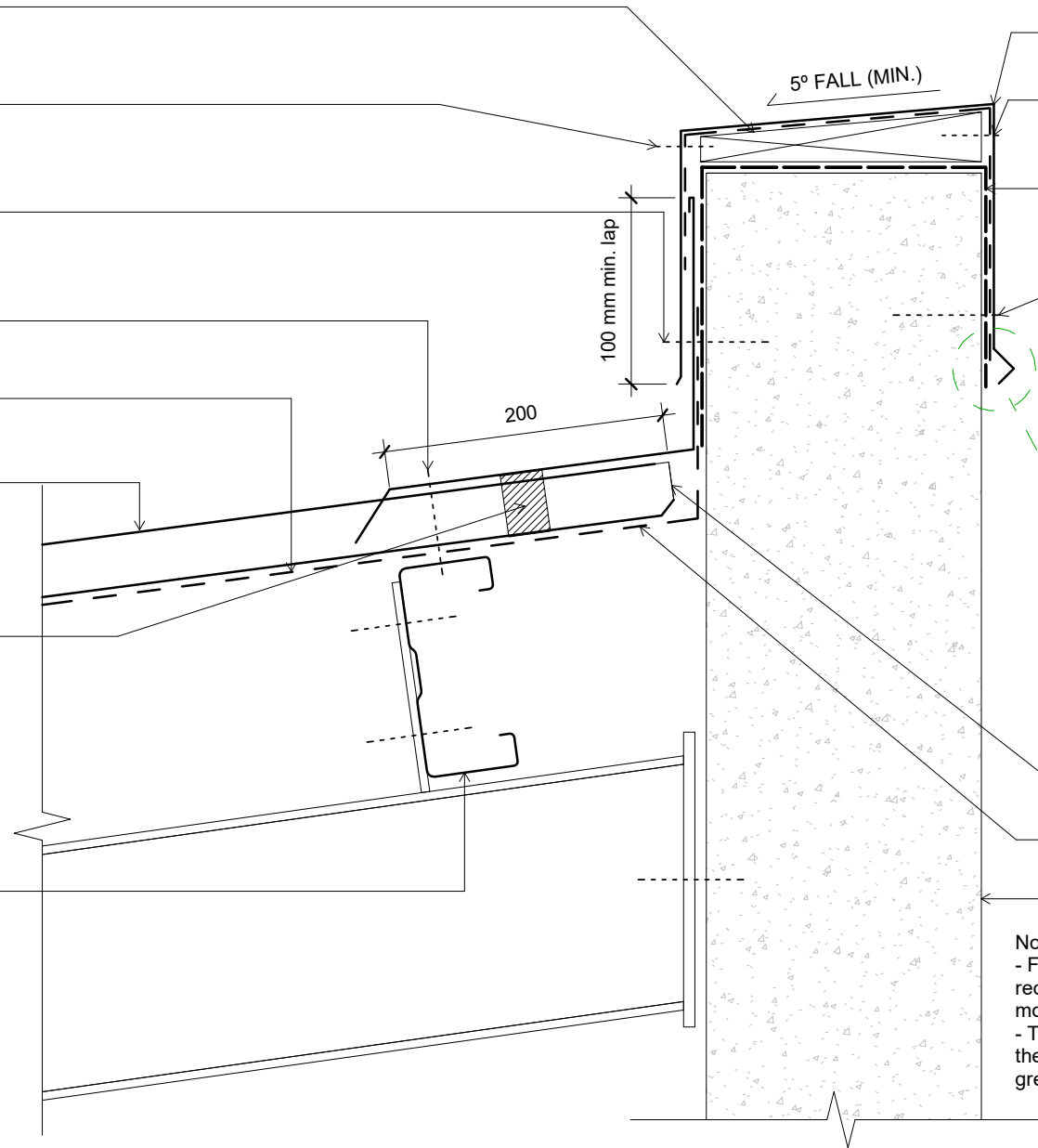
Fix flashing to roof with M6 x  
65mm Roofzip every crest

Roofing underlay and netting  
shown dashed

Dimond Brownbuilt 900 roofing  
(specify thickness and coating)

Foam closure strip on top of  
roofing (see note below)

Dimond hi-span steel purlin  
(specify size)



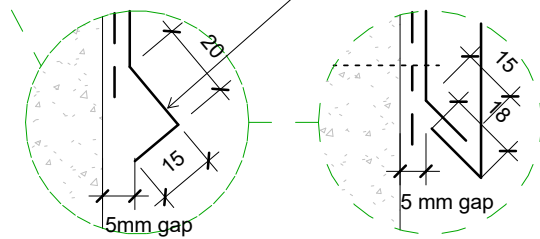
0.55mm parapet flashing (specify  
coating)

Climaseal screw fixed @ 600 c/c  
max. M6 x 25mm roofzip

Separation barrier with self  
adhesive tape or similar around  
concrete wall

Fix capping to concrete with  
6.5mm x 20mm metal pin anchors  
@ 1000mm centers

Cut edge must avoid contact with  
concrete. Avoid overpainting  
flashing to concrete joint.



Dimond Brownbuilt 900 stop ended

Roofing underlay and netting  
shown dashed

Concrete wall

**Notes:**

- Foam closure strip only required if bird or vermin proofing is required, or if in a high wind area, there is a risk of windblown moisture entering the building.
- These details are suitably fixed to allow for a theoretical thermal movement of up to 10mm. For thermal movement greater than this a clipping system should be considered.

Original Size A4



**Brownbuilt 900**  
Roof  
Parapet Detail

File:	
Issue:	04
Scale:	As indicated
Date:	05 October 2018
Reference:	dim_bb9_1010