

DIMONDCLAD INTERLOCK

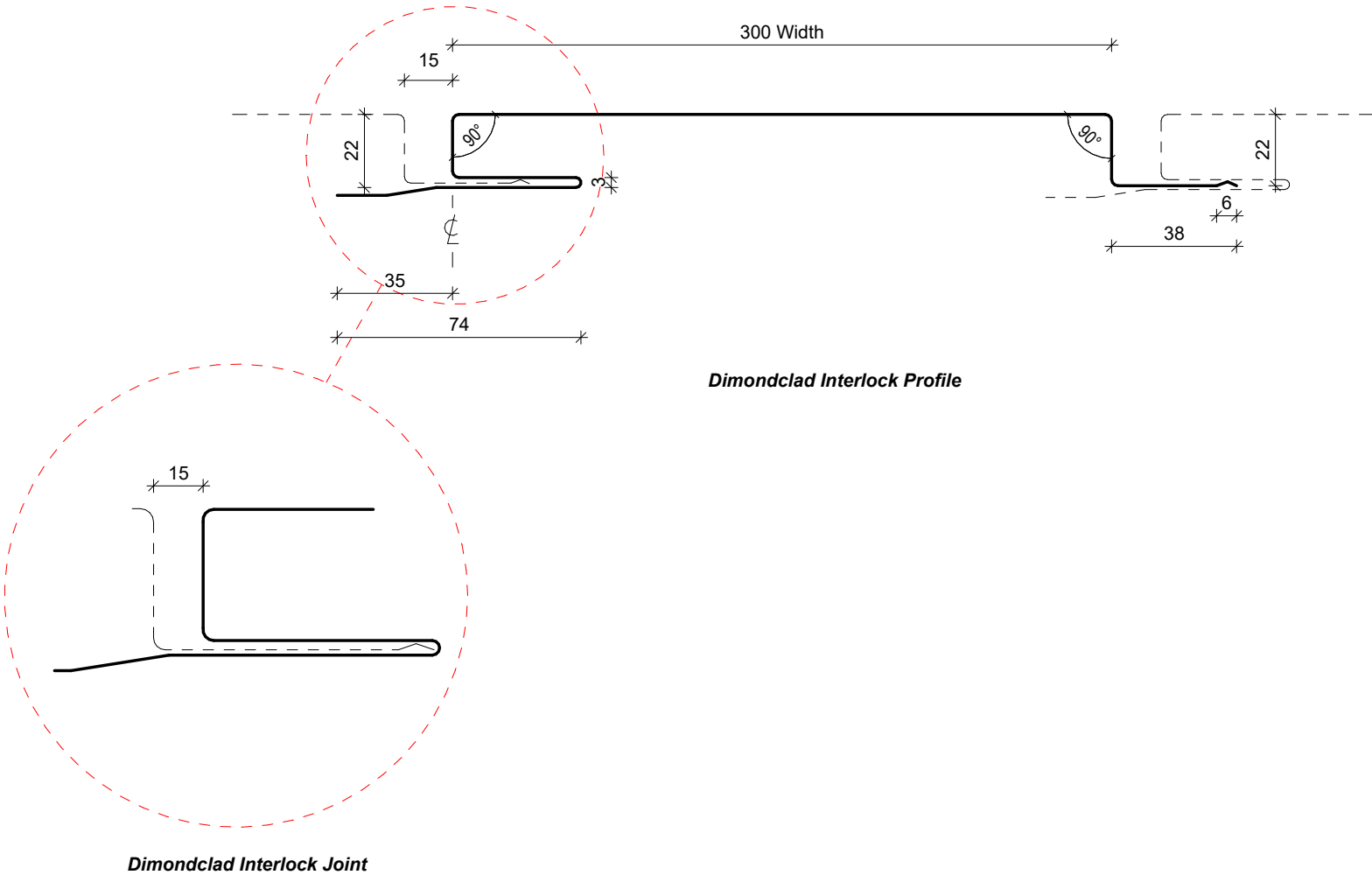
RESIDENTIAL VERTICAL WALL CLADDING

DETAILS:

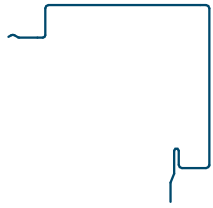
REV: DATE:

IRVC00	Cover Sheet	1	Jun 2025
IRVC01	Profile Summary	1	Jun 2025
IRVC02	Typical Flashings Details	1	Jun 2025
IRVC03	Barge Flashing Detail	1	Jun 2025
IRVC04	External Corner Detail - Option 01	1	Jun 2025
IRVC05	External Corner Detail - Option 02	1	Jun 2025
IRVC06	Internal Corner Detail - Option 01	1	Jun 2025
IRVC07	Internal Corner Detail - Option 02	1	Jun 2025
IRVC08	Base Detail	1	Jun 2025
IRVC09	Soffit Detail	1	Jun 2025
IRVC10	Window/ Door Head Detail	1	Jun 2025
IRVC11	Window/ Door Jamb Detail	1	Jun 2025
IRVC12	Window Sill Detail	1	Jun 2025
IRVC13	Meterbox Head Detail	1	Jun 2025
IRVC14	Meterbox Jamb Detail	1	Jun 2025
IRVC15	Meterbox Sill Detail	1	Jun 2025
IRVC16	Pipe Penetration Detail	1	Jun 2025
IRVC17	Transverse Junction Detail	1	Jun 2025
IRVC18	3D Window Flashing Detail	1	Jun 2025

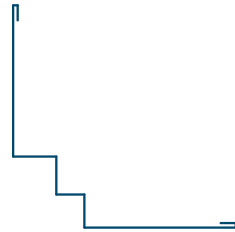
PROFILE OVERVIEW	
USE	Cladding
WIDTH	300



Profile Summary



**External Corner Flashing
Option 01**



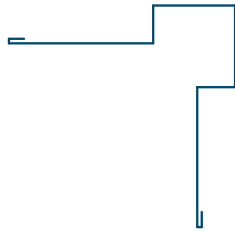
**Internal Corner Flashing
Option 01**



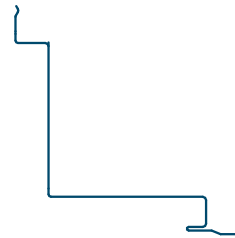
Window Head Flashing



Transverse Flashing



**External Corner Flashing
Option 02**



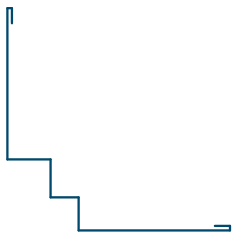
**Internal Corner Flashing
Option 02**



Window Jamb Flashing



Soffit Flashing



**Internal Corner Flashing
Option 01**

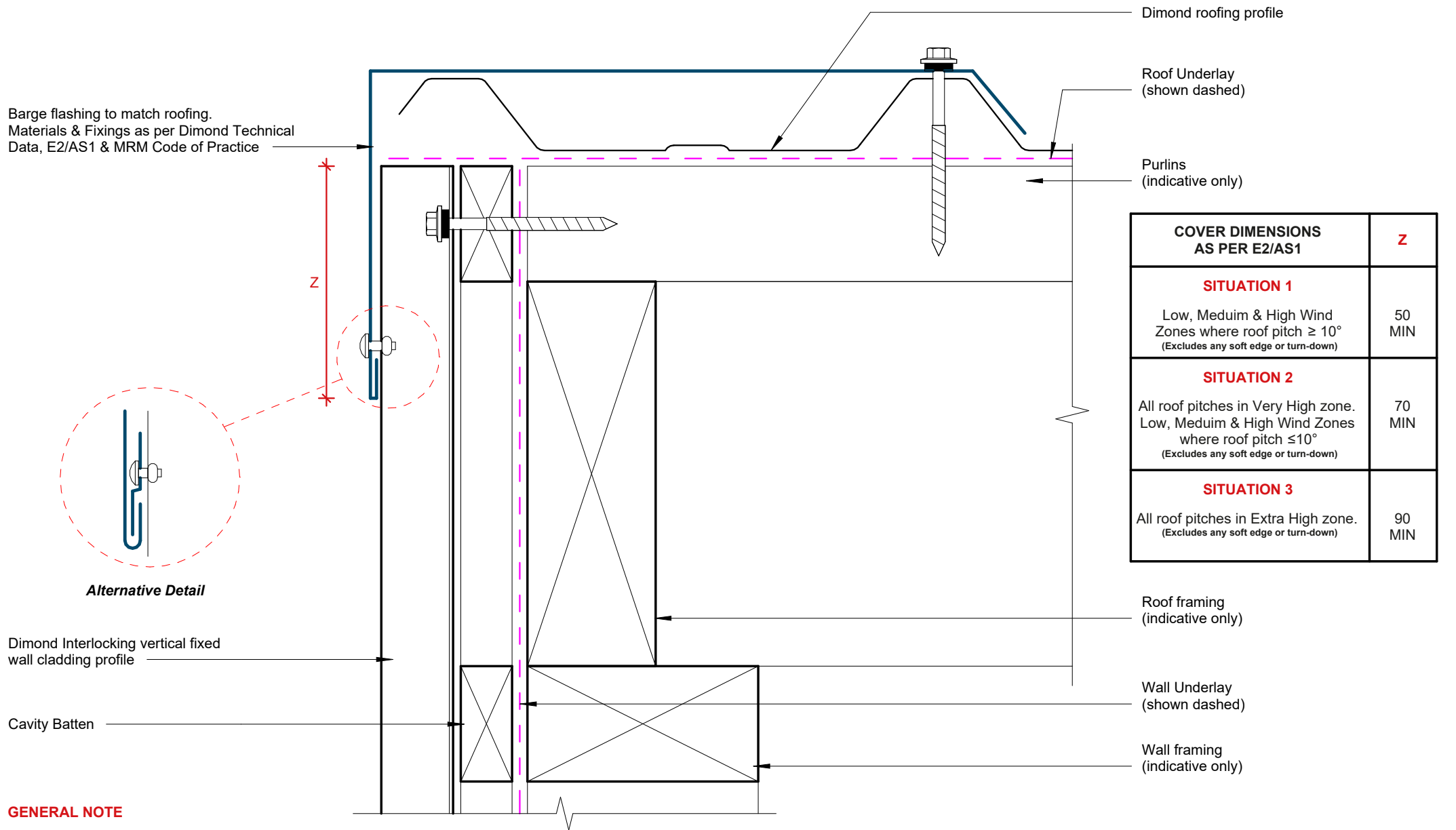


Base Flashing



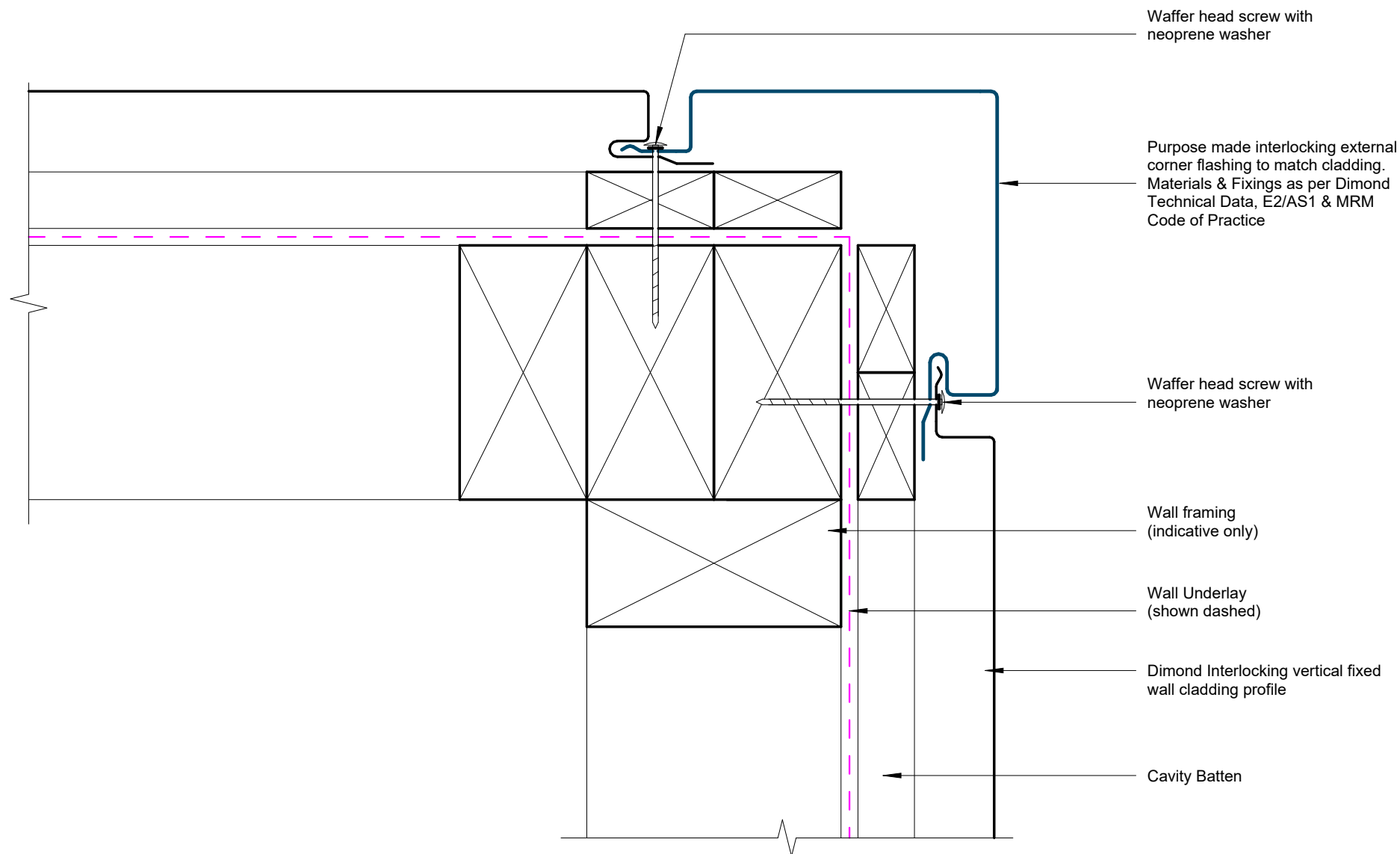
Window Sill Flashing

Typical Flashings Details



Barge Flashing Detail

Rev: 1 Dimondclad Interlock Residential Cladding

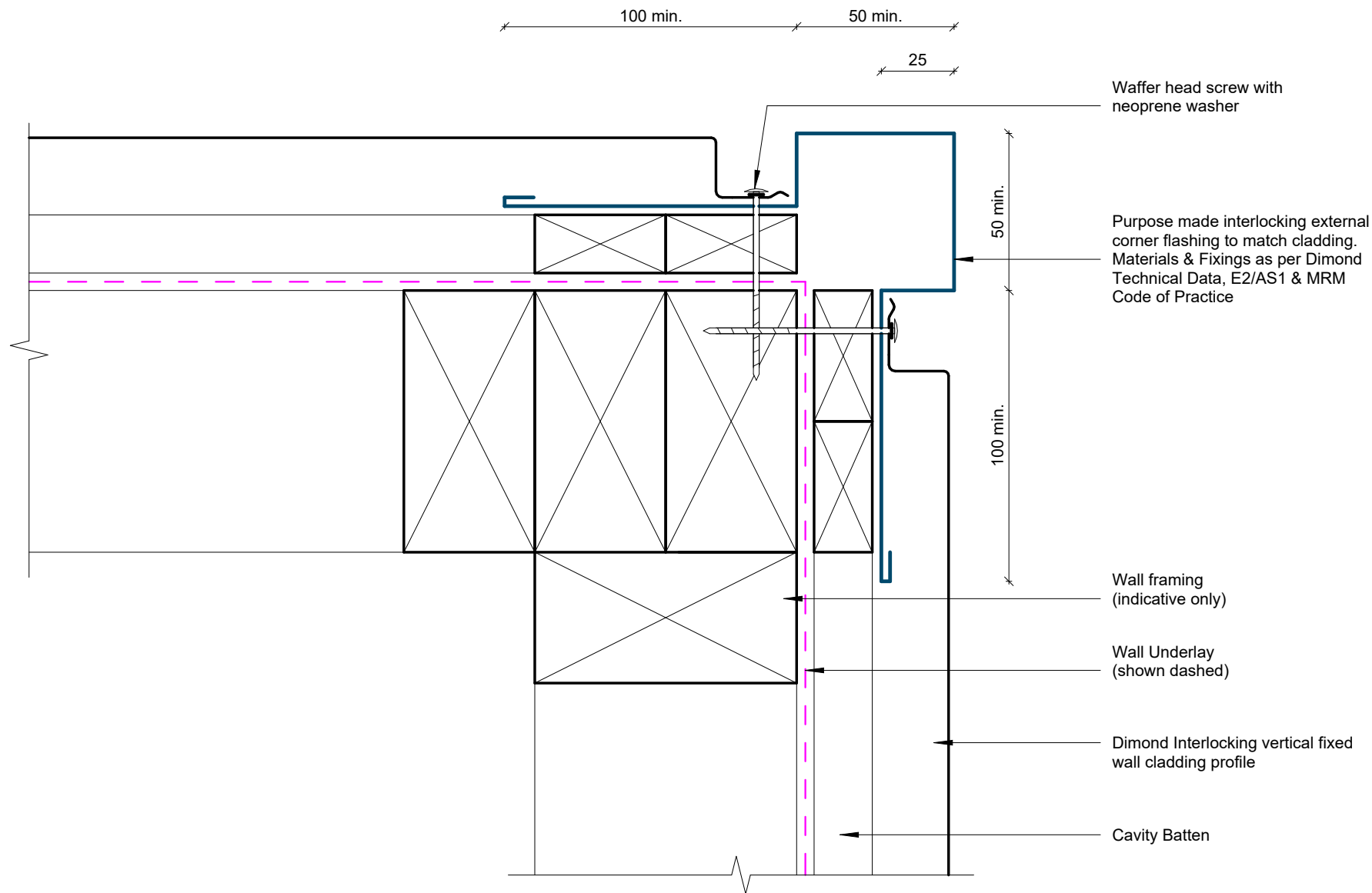


GENERAL NOTE

Cavity battens or timber framing that contain copper must be separated from steel cladding by a strip of wall or roof underlay or DPC.

External Corner Detail - Option 01

Rev: 1 Dimondclad Interlock Residential Cladding

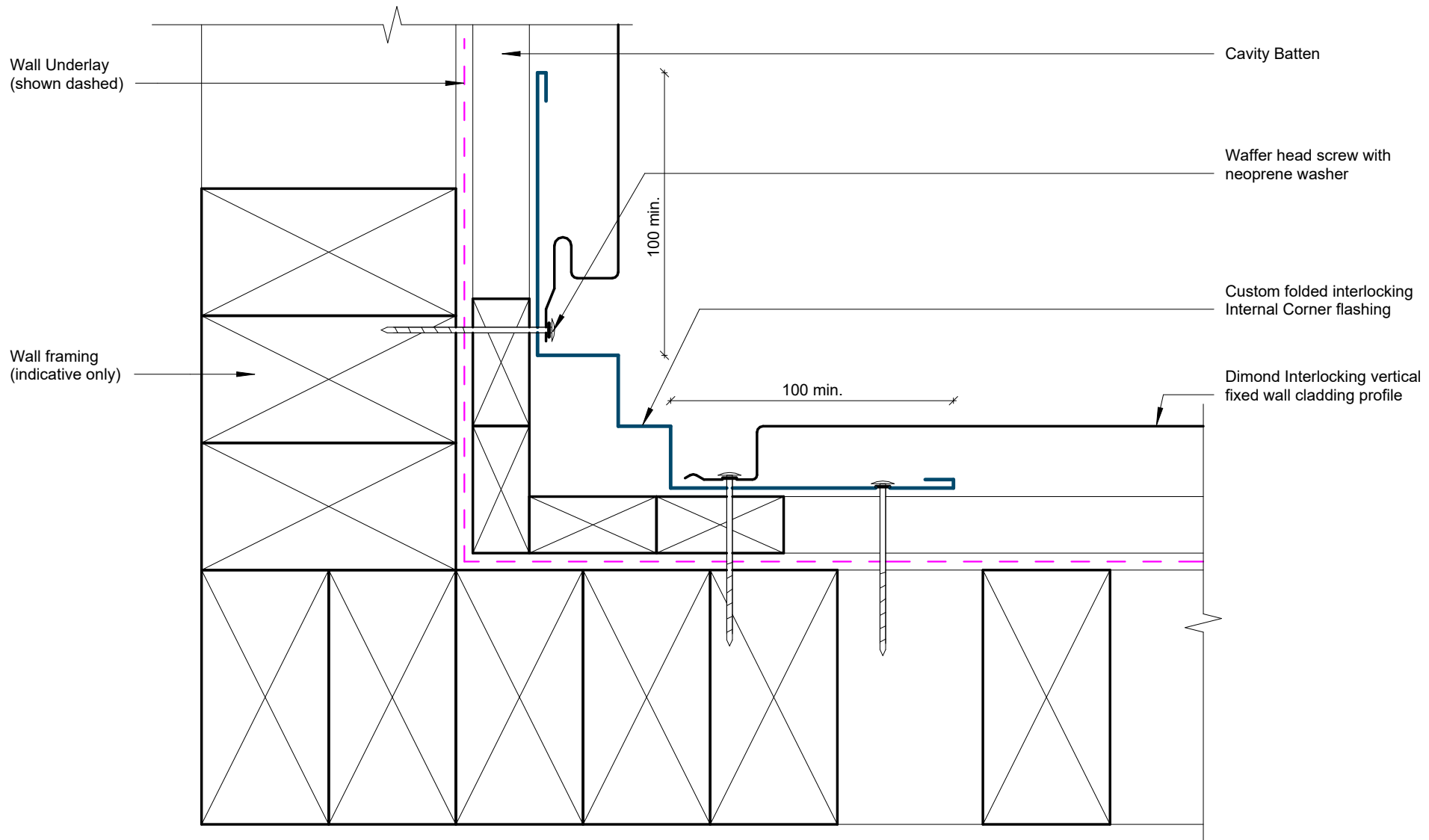


GENERAL NOTE

Cavity battens or timber framing that contain copper must be seperated from steel cladding by a strip of wall or roof underlay or DPC.

External Corner Detail - Option 02

Rev: 1 Dimondclad Interlock Residential Cladding

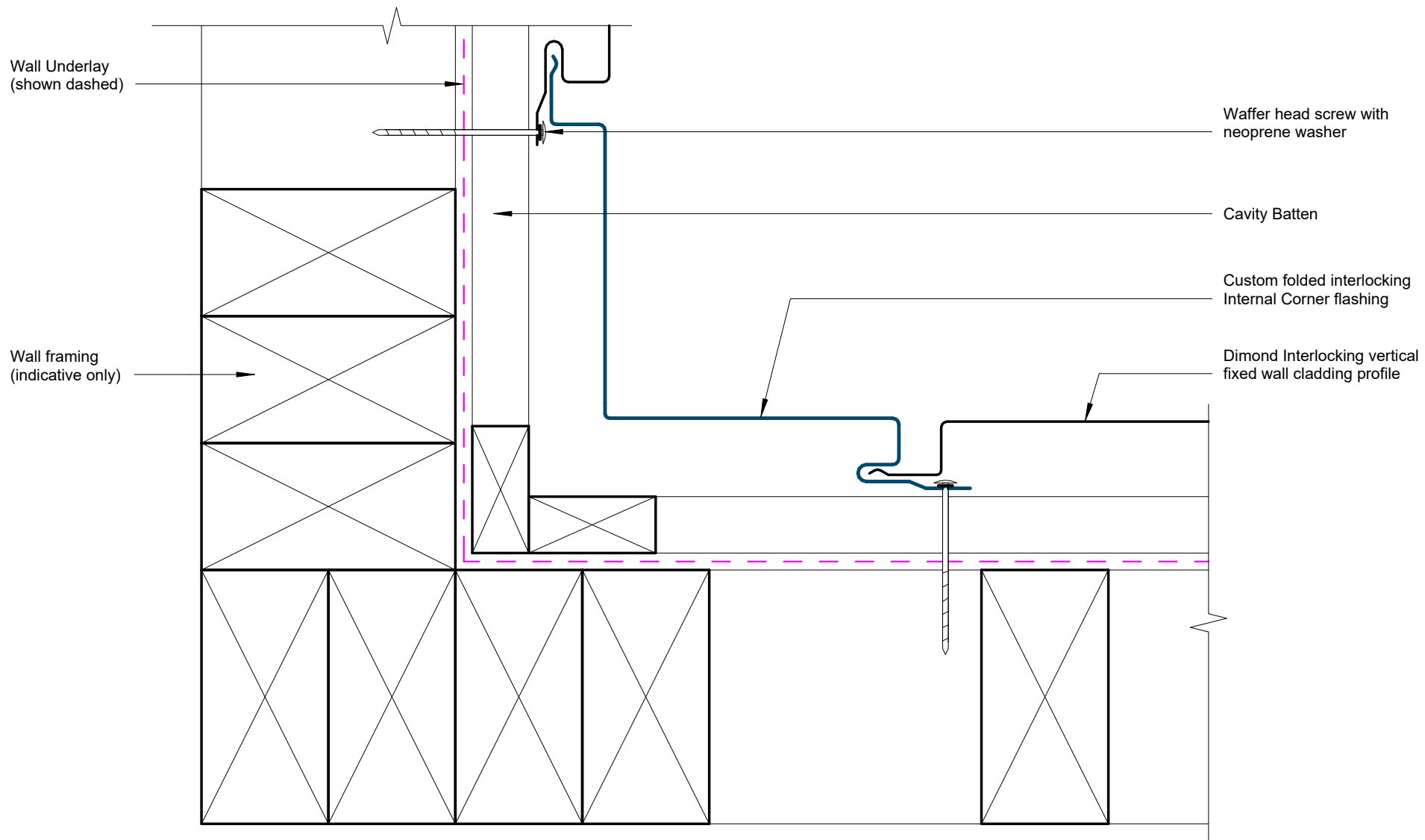


GENERAL NOTE

Cavity battens or timber framing that contain copper must be separated from steel cladding by a strip of wall or roof underlay or DPC.

Internal Corner Detail - Option 01

Rev: 1 Dimondclad Interlock Residential Cladding

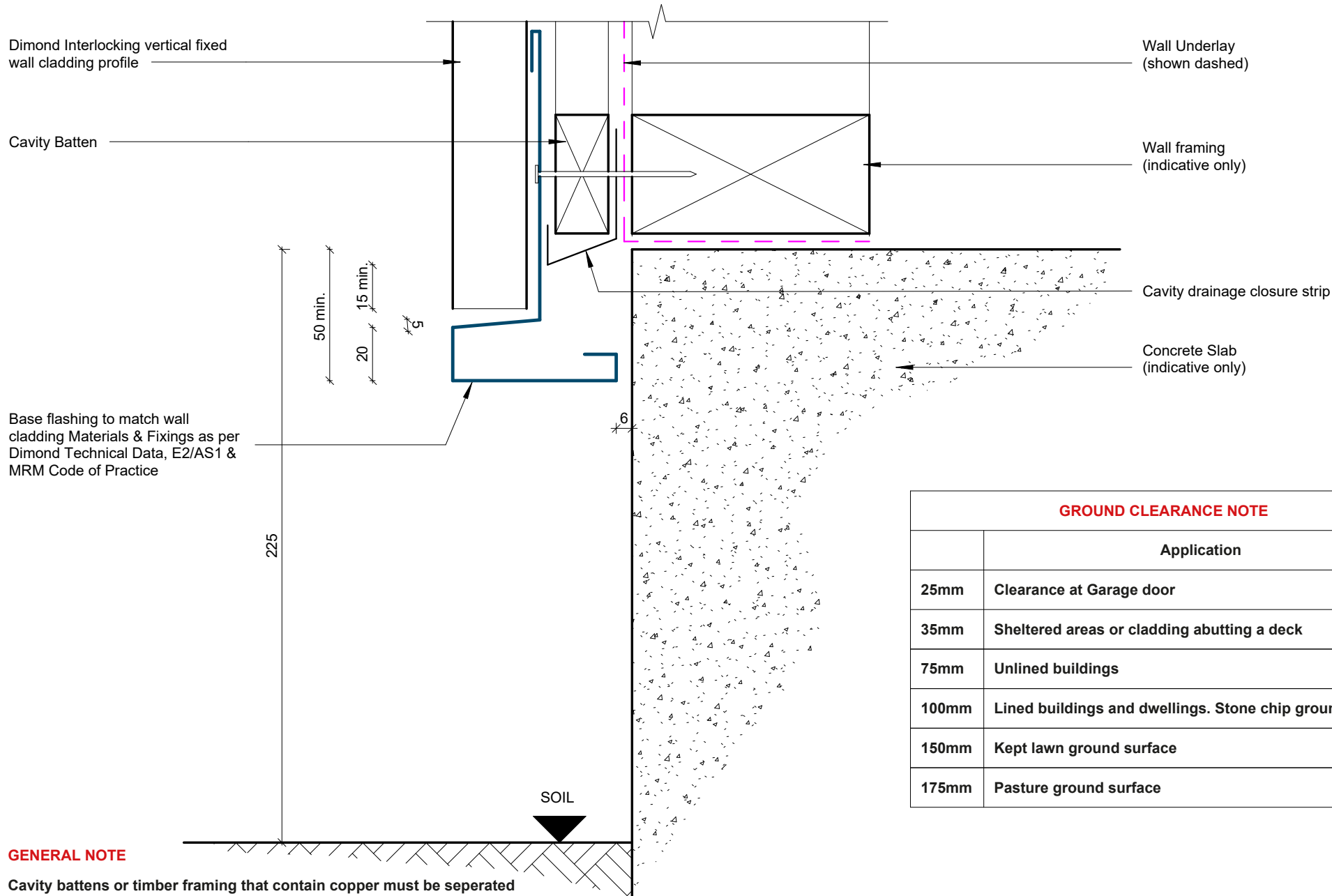


GENERAL NOTE

Cavity battens or timber framing that contain copper must be seperated from steel cladding by a strip of wall or roof underlay or DPC.

Internal Corner Detail - Option 02

Rev: 1 Dimondclad Interlock Residential Cladding



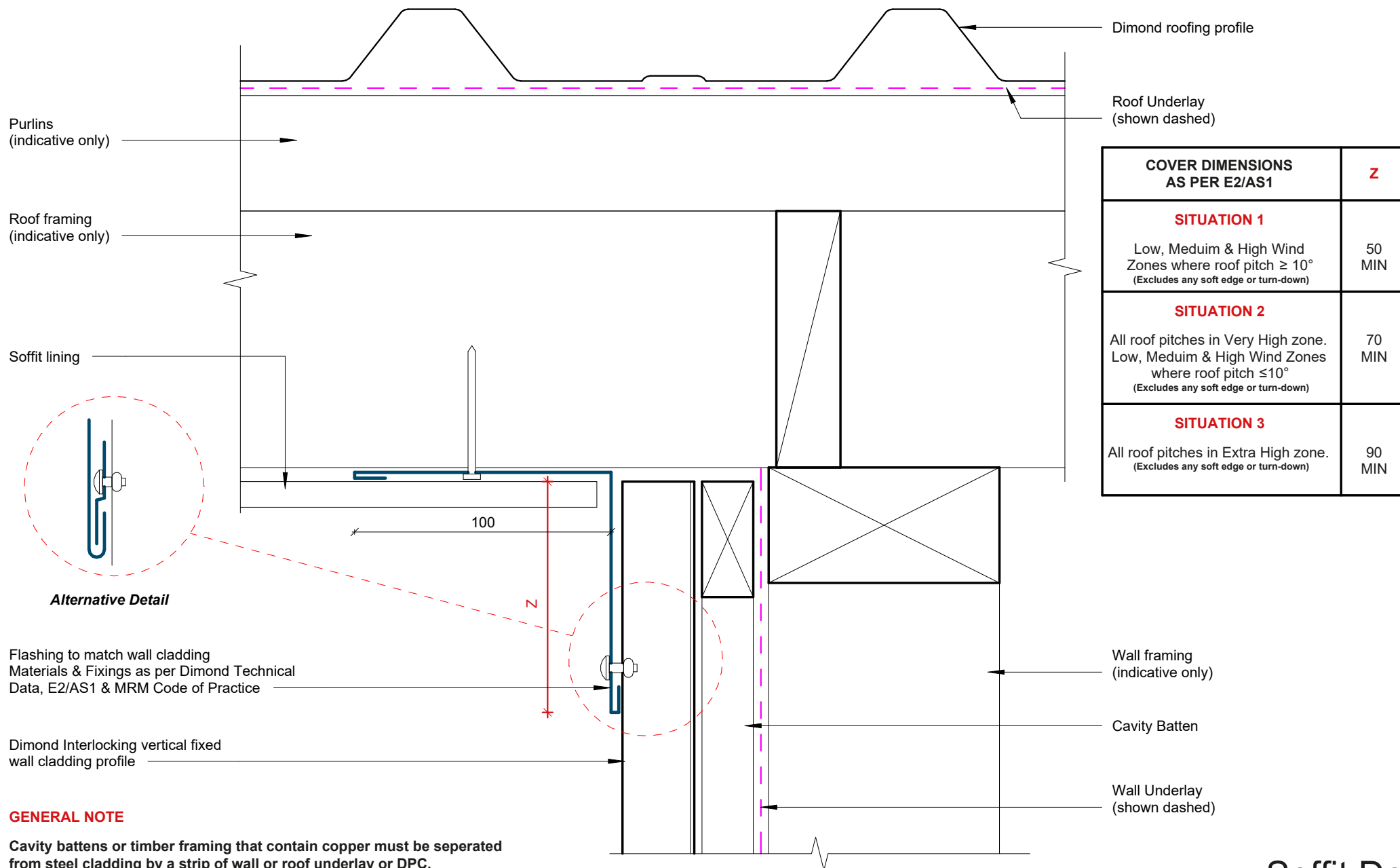
GENERAL NOTE

Cavity battens or timber framing that contain copper must be seperated from steel cladding by a strip of wall or roof underlay or DPC.

GROUND CLEARANCE NOTE

	Application
25mm	Clearance at Garage door
35mm	Sheltered areas or cladding abutting a deck
75mm	Unlined buildings
100mm	Lined buildings and dwellings. Stone chip ground surface
150mm	Kept lawn ground surface
175mm	Pasture ground surface

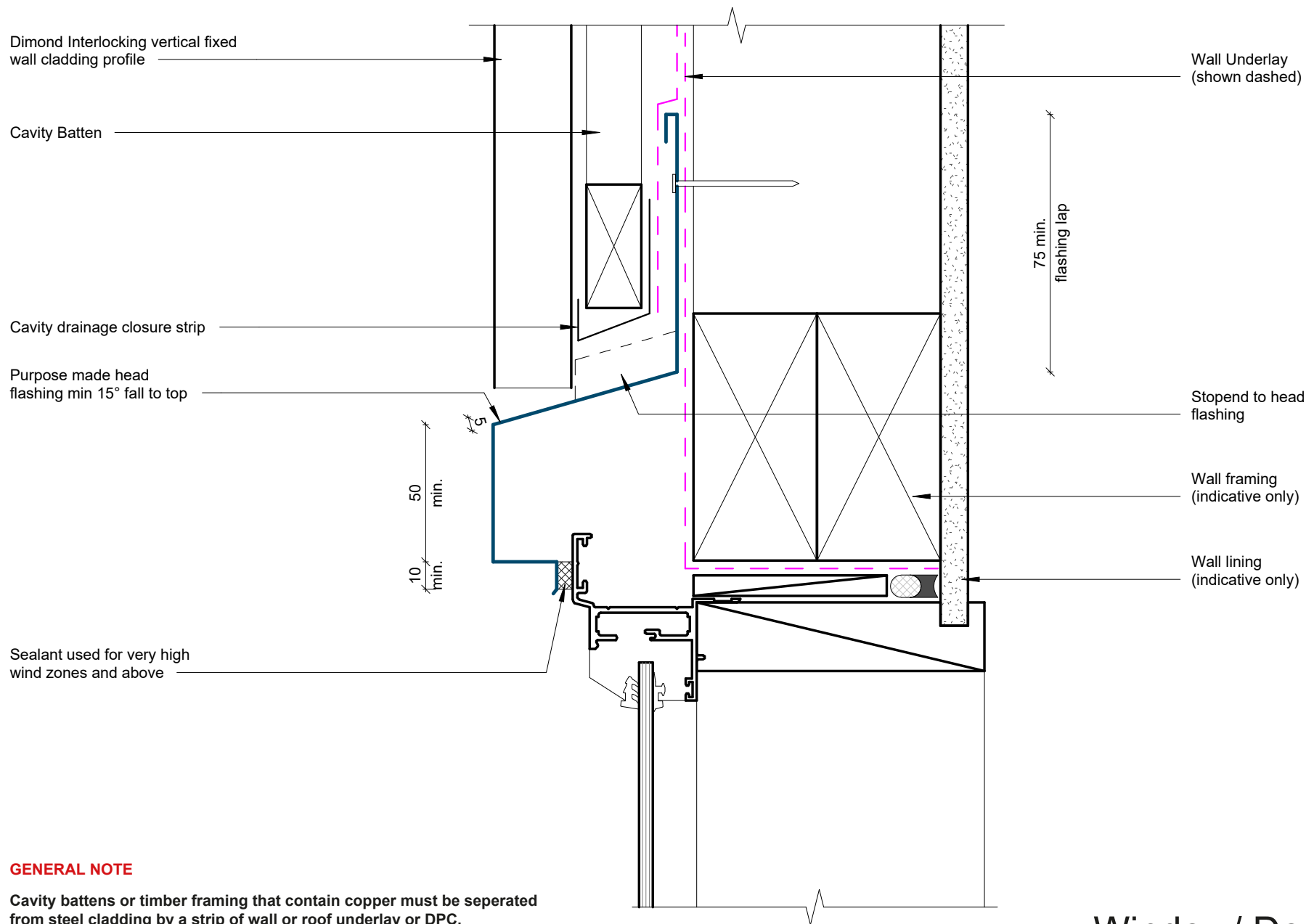
Base Detail



GENERAL NOTE

Cavity battens or timber framing that contain copper must be separated from steel cladding by a strip of wall or roof underlay or DPC.

Soffit Detail



GENERAL NOTE

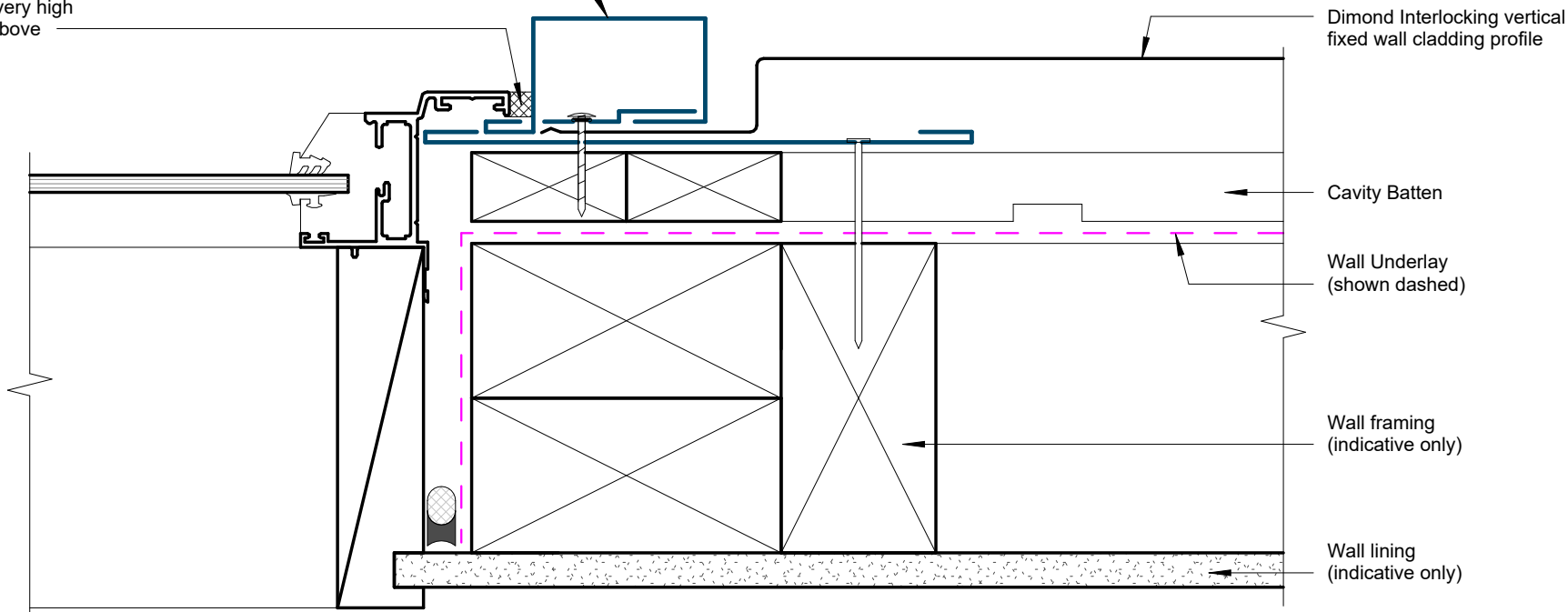
Cavity battens or timber framing that contain copper must be separated from steel cladding by a strip of wall or roof underlay or DPC.

Window/ Door Head Detail

Rev: 1 Dimondclad Interlock Residential Cladding

Flashing to match wall cladding
Materials & Fixings as per Dimond Technical
Data, E2/AS1 & MRM Code of Practice

Sealant used for very high
wind zones and above



Dimond Interlocking vertical
fixed wall cladding profile

Cavity Batten

Wall Underlay
(shown dashed)

Wall framing
(indicative only)

Wall lining
(indicative only)

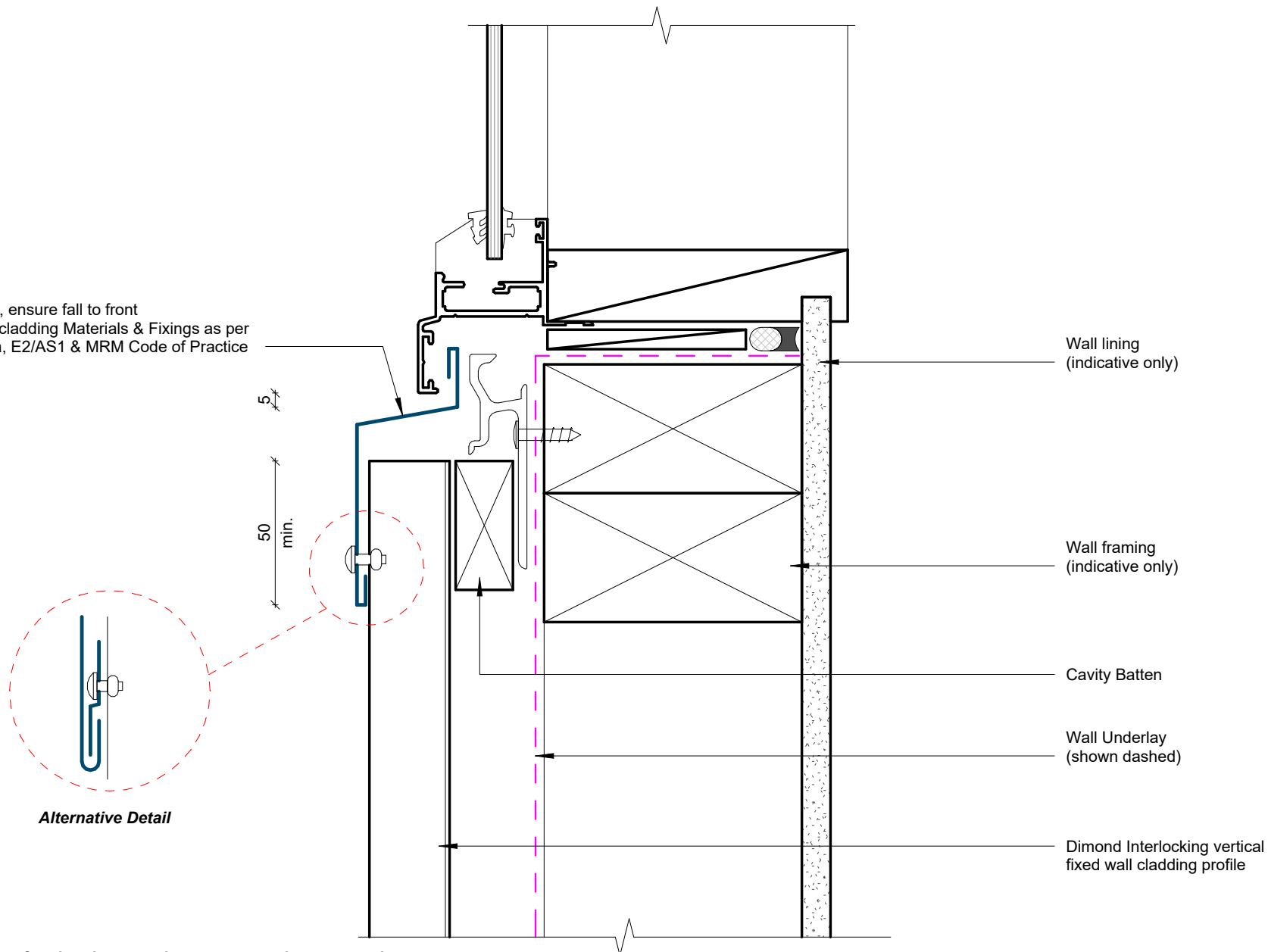
GENERAL NOTE

Cavity battens or timber framing that contain copper must be separated
from steel cladding by a strip of wall or roof underlay or DPC.

Window/ Door Jamb Detail

Rev: 1 Dimondclad Interlock Residential Cladding

Purpose made flashing, ensure fall to front
Flashing to match wall cladding Materials & Fixings as per
Dimond Technical Data, E2/AS1 & MRM Code of Practice

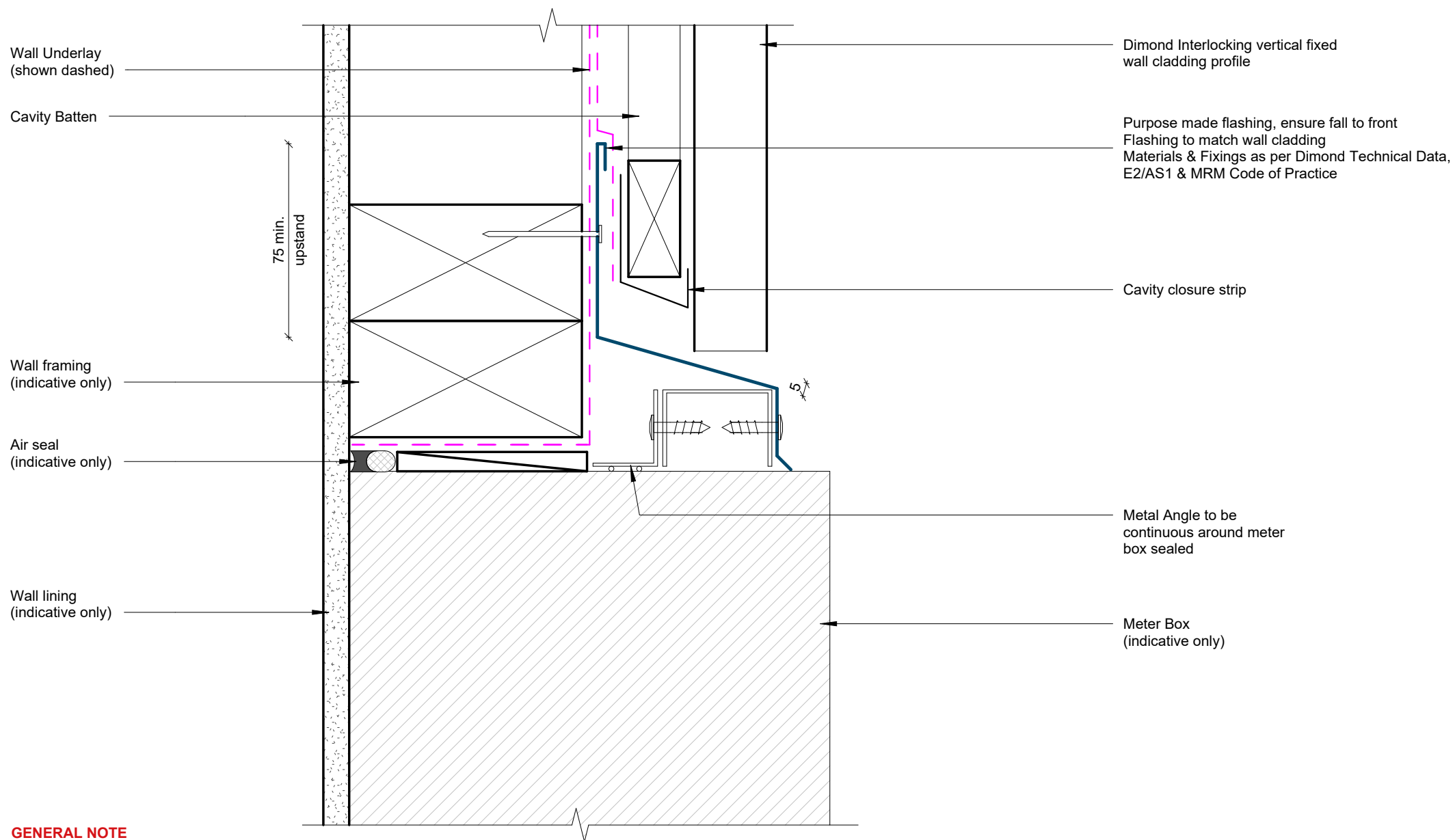


GENERAL NOTE

Cavity battens or timber framing that contain copper must be separated from steel cladding by a strip of wall or roof underlay or DPC.

Window Sill Detail

Rev: 1 Dimondclad Interlock Residential Cladding

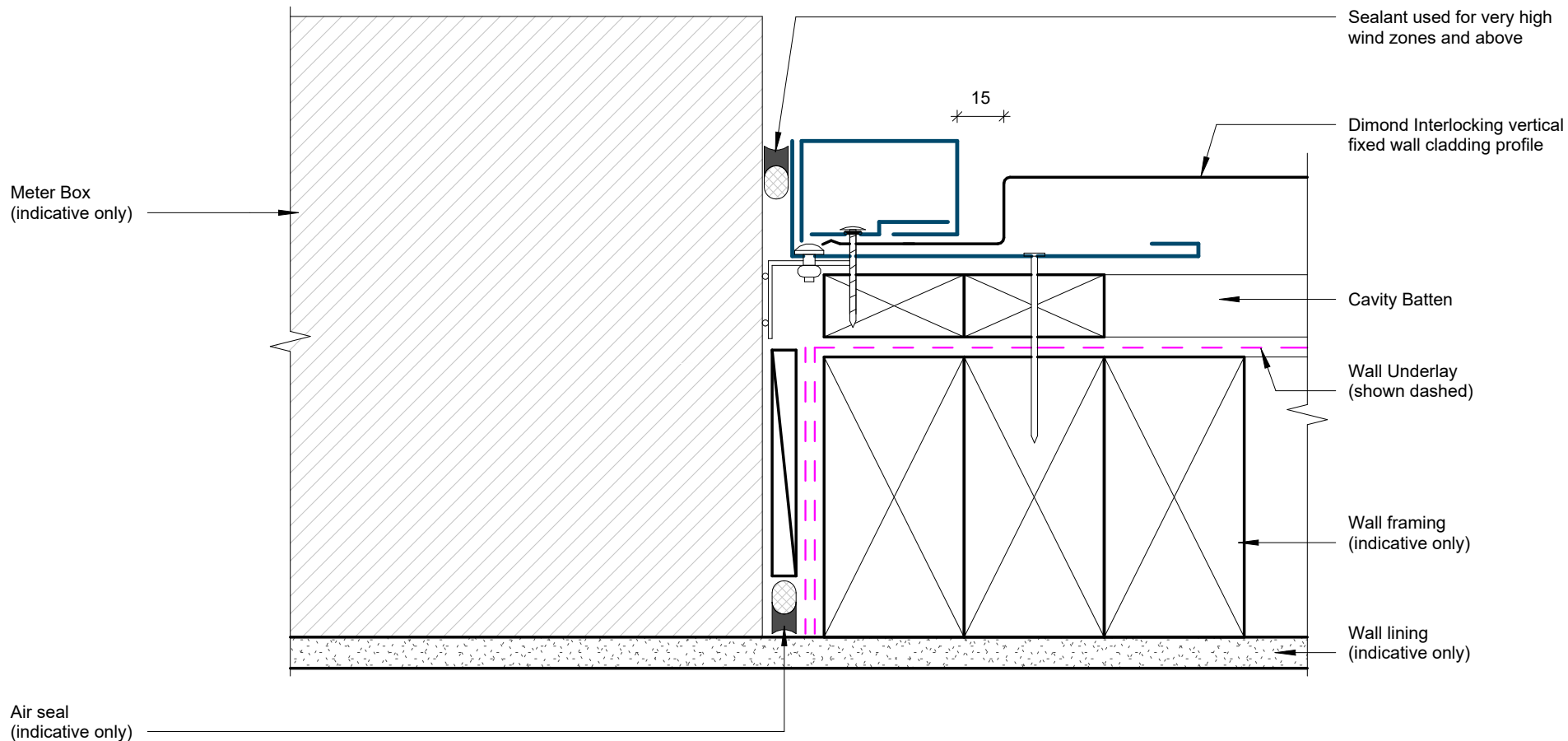


GENERAL NOTE

Cavity battens or timber framing that contain copper must be separated from steel cladding by a strip of wall or roof underlay or DPC.

Meterbox Head Detail

Rev: 1 Dimondclad Interlock Residential Cladding



GENERAL NOTE

Cavity battens or timber framing that contain copper must be seperated from steel cladding by a strip of wall or roof underlay or DPC.

Meterbox Jamb Detail

Rev: 1 Dimondclad Interlock Residential Cladding

Meter Box
(indicative only)

Wall lining
(indicative only)

Air seal
(indicative only)

Wall framing
(indicative only)

Cavity Batten

Wall Underlay
(shown dashed)

Metal Angle to be
continuous around meter
box sealed

Purpose made flashing,
ensure fall to front
Flashing to match wall cladding
Materials & Fixings as per
Dimond Technical Data, E2/AS1
& MRM Code of Practice

50
min.

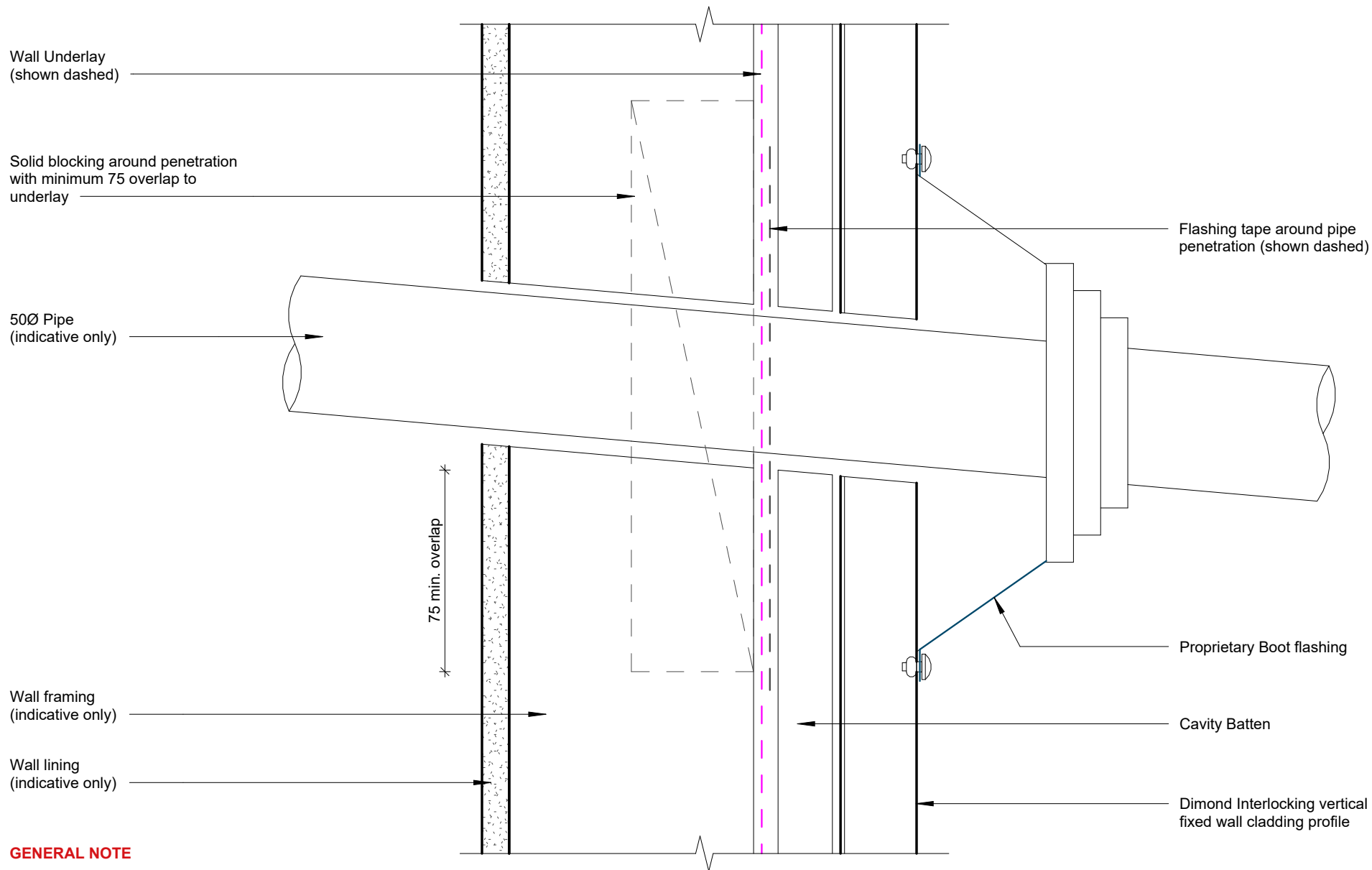
Alternative Detail

Dimond Interlocking vertical
fixed wall cladding profile

GENERAL NOTE

Cavity battens or timber framing that contain copper must be seperated from steel cladding by a strip of wall or roof underlay or DPC.

Meterbox Sill Detail

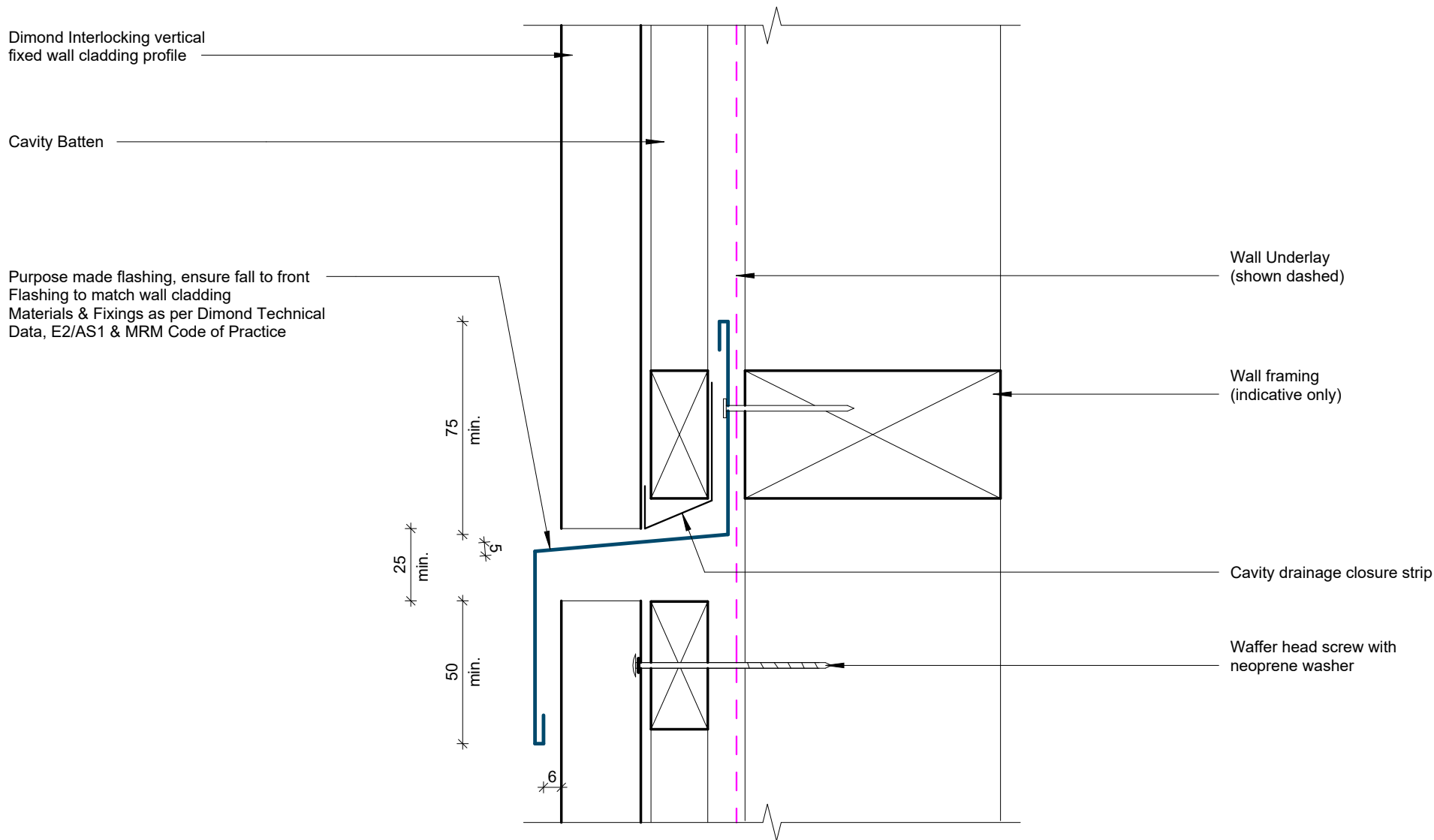


GENERAL NOTE

Cavity battens or timber framing that contain copper must be separated from steel cladding by a strip of wall or roof underlay or DPC.

Pipe Penetration Detail

Rev: 1 Dimondclad Interlock Residential Cladding



GENERAL NOTE

Cavity battens or timber framing that contain copper must be seperated from steel cladding by a strip of wall or roof underlay or DPC.

Transverse Junction Detail

Rev: 1 Dimondclad Interlock Residential Cladding

Dimondclad Interlock cladding

Aluminium joinery frame
(indicative only)

Pre finished head flashing min
15° fall to top

Pre finished jamb flashing

Pre finished secondary
flashing

Pre finished sill flashing, ensure
fall to front

GENERAL NOTE

Cavity battens or timber framing that contain copper must be separated from steel cladding by a strip of wall or roof underlay or DPC.

Flashing to match wall cladding

Materials & Fixings as per Dimond Technical Data, E2/AS1 & MRM Code of Practice

3D Window Flashing Detail

Rev: 1 Dimondclad Interlock Residential Cladding