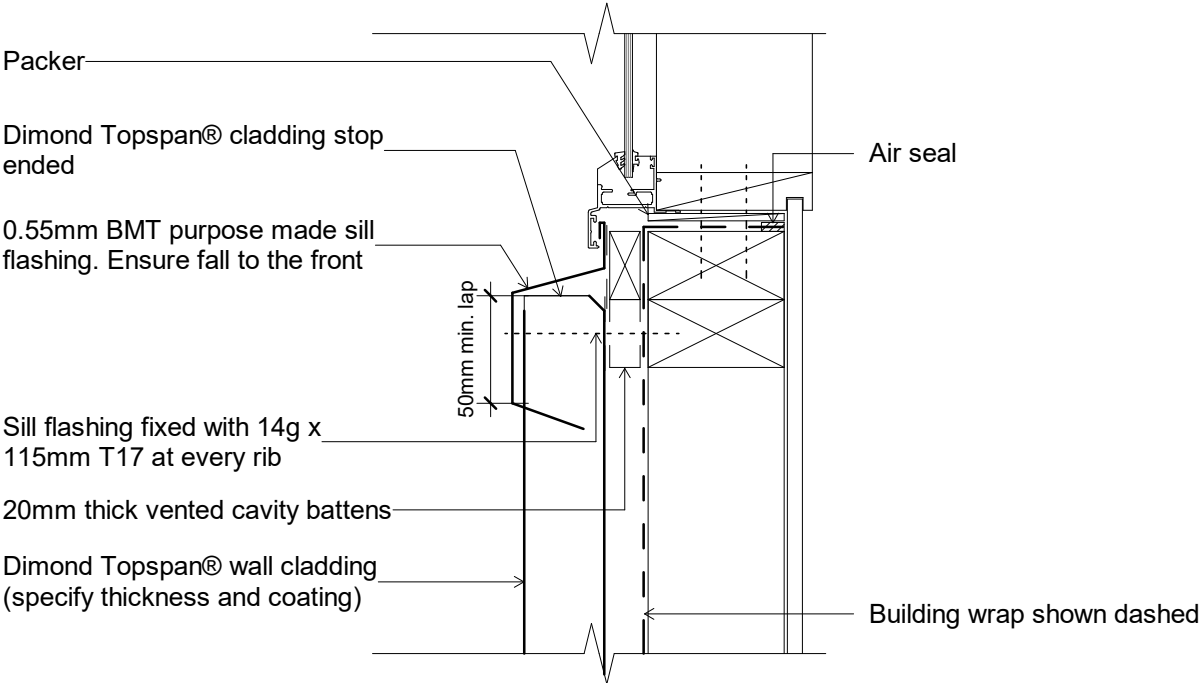


Notes:
These details are suitable for use as a guide only and are not intended to be used as a substitute for a professional design or engineering drawing. Dimond will not be liable for any use of this document or the information and specifications contained in this document, other than for the Permitted Purpose. For thermal movement greater than this a clipping system should be considered.



Notes:
-Where CCA or ACQ treated cavity battens are installed a barrier between the batten and the cladding is required.

Original Size A4



Topspan Wall

Vertical Cladding with Cavity Window Detail - Sill

dim_tps_2061 Vertical Cladding with Cavity Window Detail - Sill		
Issue:	02	Reference dim_tps_2061
Scale:	1 : 5	
Date:	10 June 2019	