

Dimond wall cladding (specify thickness and coating)

Wall underlay shown dashed (if required)

Dimond roofing (specify profile, thickness and coating) fixed to Dimond roof rail with 12g hex head tek screw (Length to suit profile)

0.55mm Flashing (specify coating) notched over profile and fixed with 12g x 20mm Type 17

Notching to have 3mm clearance around profile to allow for ventilation

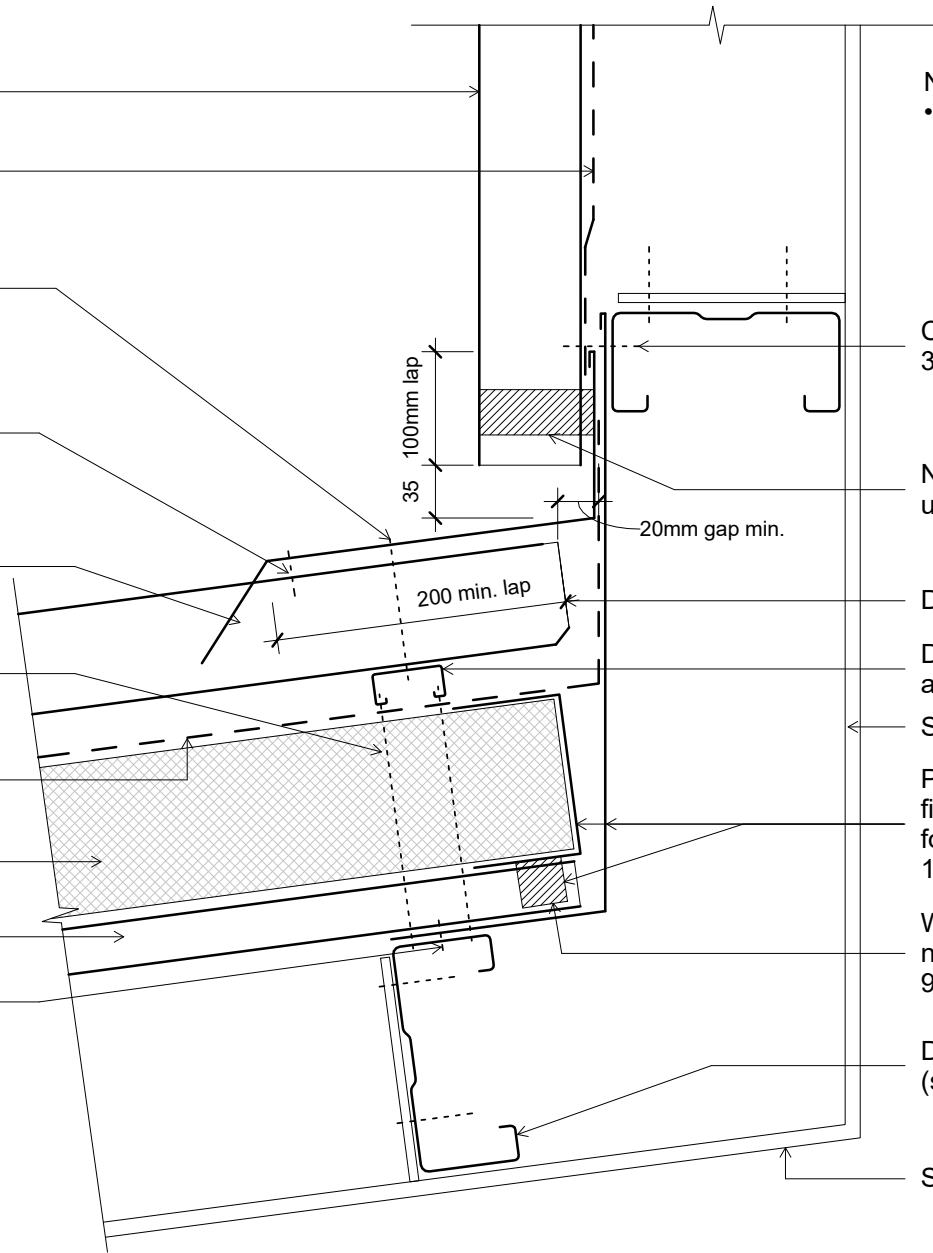
Hex head 14g - 10x Length (Depending on Enertherm thickness specified) @ 150 centres

Solitex Mento 1000 connect underlay laid vertically over PIR

Enertherm ALU Rigid Insulation. Depth as specified

NPM 900 metal tray

12g x 20mm tek screw pan fixed every pan



Note:

- Foam closure strip only required if bird or vermin proofing is required, or if in a high wind area, there is a risk of windblown moisture entering the building.

Climaseal coated self drilling 12g x 35mm tek screw pan fixed

Narrow tipped foam closure strip under cladding

Dimond roofing stop ended

Dimond Galvanised Roof Rail laid and fixed over every purlin

Supporting steel structure

PIR edge capped with flashing with fire stop to fire Engineers design for group numbers 2 or 3 for group 1s or 2s contact Dimond Roofing.

Wide tipped profiled foam under & narrow tipped foam on top of NPM 900

Dimond HI-Span steel purlin (specify size)

Supporting steel structure

Original Size A4



# Tricore Wall

Wall/Roof Junction

Issue: 03	Reference
Scale: 1 : 5	
Date: 31 November 2019	
dim_tri_1070	