

Climaseal coated self drilling M6 x 65 Roofzip pan fixed

Continuous cavity drainage closure strip

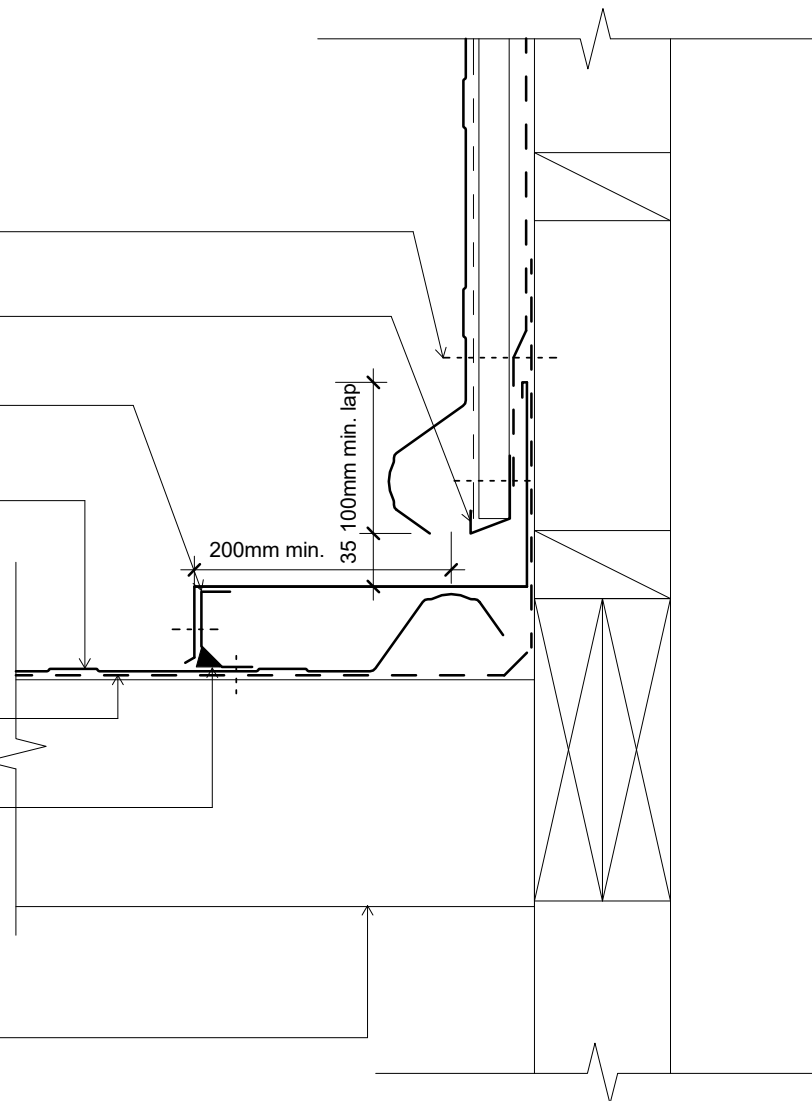
0.55mm flashing. Seal with silicone sealant and fix with 4mm dia rivets every 400mm to flashing and pan

Dimond Solar-Rib® (specify thickness and coating)

Roofing underlay and netting shown dashed

Silicone sealant or Double-sided tape to pan

Purlin



Notes:

- These details are suitably fixed to allow for a theoretical thermal movement of up to 10mm. For thermal movement greater than this a clipping system should be considered.
- Leave foam out if ventilation is required.
- Where CCA or ACQ treated cavity battens are installed a barrier between the batten and the cladding is required.

Original Size A4

dim_sor_2170 Horizontal Cavity Cladding - Roof Junction (90 deg)	
Issue: 01	Reference dim_sor_2170
Scale: 1 : 5	
Date: 20 December 2018	