

Metadata

-  
 Product: Master Set  
 Product Code: mas  
 Cavity: cav  
 Construction: res  
 Context: Junction  
 Detail: Wall  
 Frabric: Wall  
 Orientation: Horizontal

Building wrap shown dashed

20mm thick cavity battens

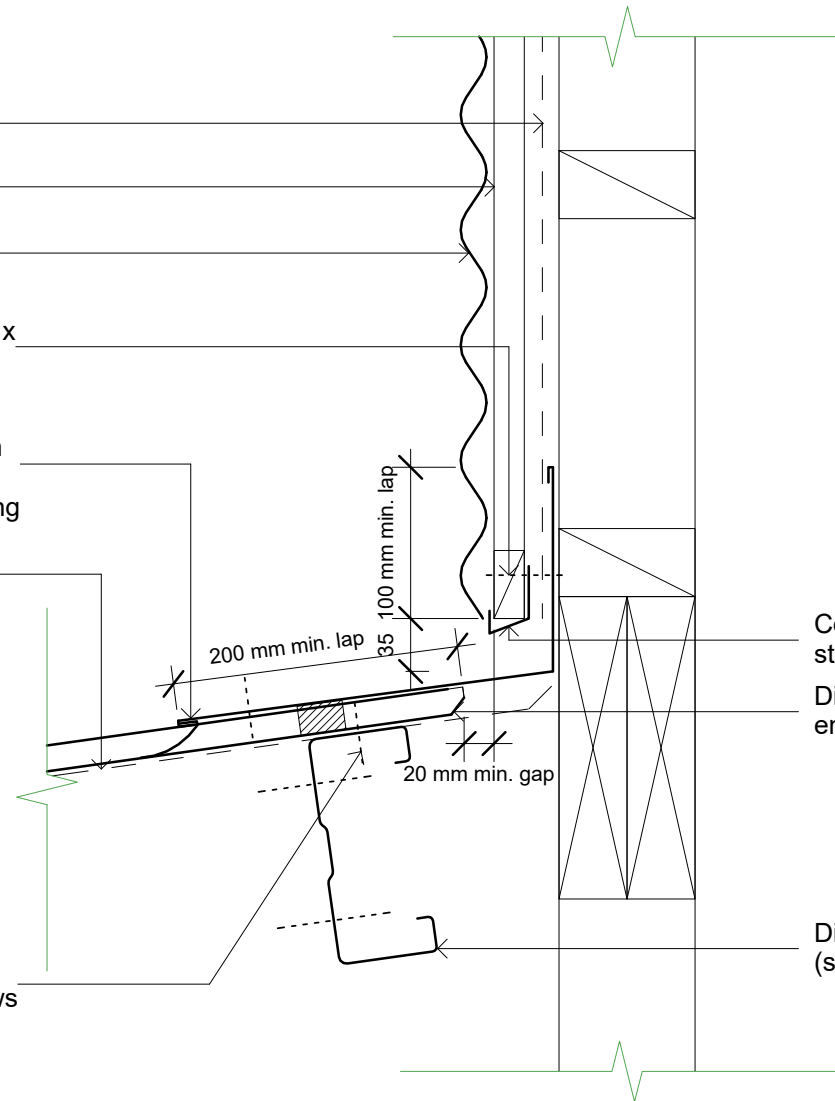
Dimond corrugate wall cladding  
 (specify thickness and coating)

Climaseal coated self drilling 12g x  
 25mm t17 screw pan fixed

Aluminium 'soft edge' flashing or  
 flashguard fixed with 12g x 25mm  
 type 17 or 4.8mmØ aluminium  
 rivets at every second rib of roofing

Roofing underlay and netting  
 shown dashed

Pan fixed with climaseal coated  
 self drilling 12g x 20mm tek screws



Continuous cavity drainage closure  
 strip

Dimond corrugate roofing stop  
 ended

Dimond hi-span steel purlin  
 (specify size)

Notes:

- These details are suitably fixed to allow for a theoretical thermal movement of up to 10mm. For thermal movement greater than this a clipping system should be considered.

Original Size A4



Master Set  
 Wall

Horizontal Cavity Cladding - Wall/Roof Junction

File:		
Rev: Draft 01	Source:	
Scale: 1 : 5	Reference:	
Date: 180608	dim_mas_2180	