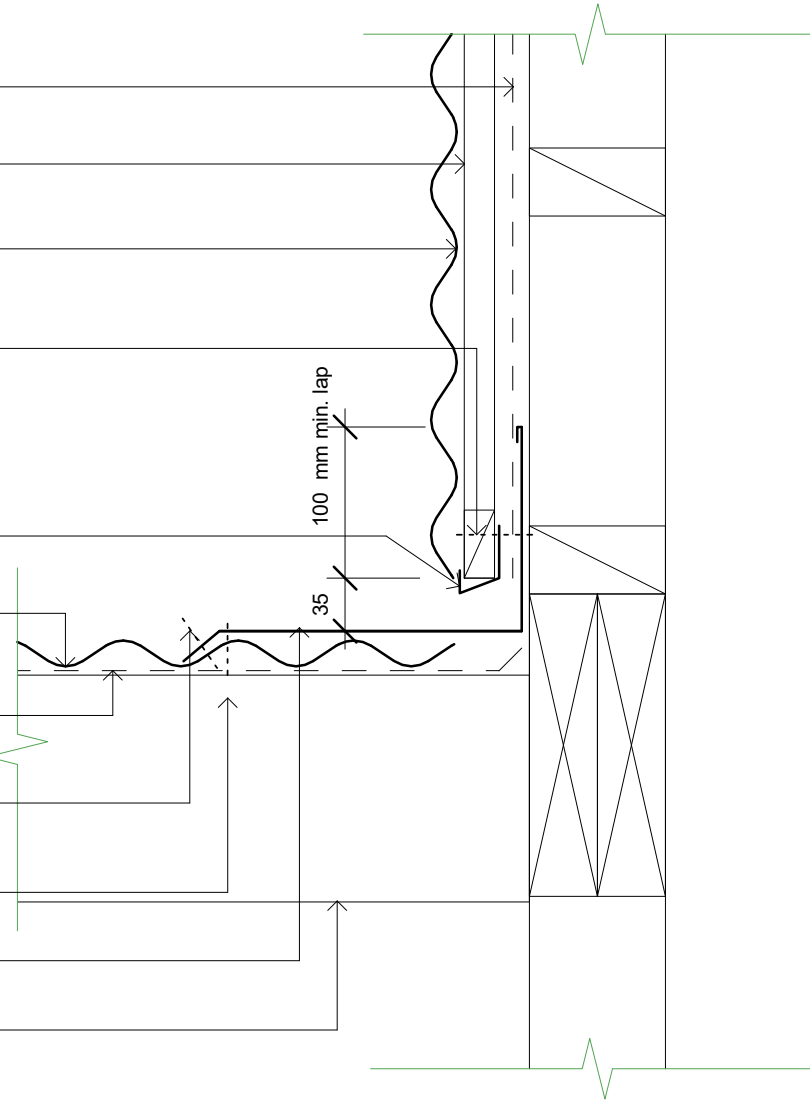


Metadata

-
 Product: Master Set
 Product Code: mas
 Cavity: cav
 Construction: res
 Context: Junction
 Detail: Wall
 Fabric: Wall
 Orientation: Horizontal

- Building wrap shown dashed
- 20mm thick cavity battens
- Dimond corrugate wall cladding
(specify thickness and coating)
- Climaseal coated self drilling 12g x
25mm t17 screw pan fixed
- Continuous cavity drainage closure
strip
- Dimond corrugate roofing (specify
thickness and coating)
- Roofing underlay and netting
shown dashed
- Over flashing riveted to roof with
4.8ø aluminium rivets at 1000mm
centers
- Climaseal coated self drilling 12g
x 35mm tek screw rib fixed
- Purpose made apron flashing
- Dimond hi-span steel purlin



Notes:
 - These details are suitably fixed to allow for a theoretical thermal movement of up to 10mm. For thermal movement greater than this a clipping system should be considered.
 - Leave foam out if ventilation is required.

Original Size A4



Master Set
 Wall

Horizontal Cavity Cladding - Roof Junction (90 deg)

File:		
Rev: Draft 01	Source:	
Scale: 1 : 5	Reference	
Date: 180608	dim_mas_2170	