

Metadata

-
 Product: Master Set
 Product Code: mas
 Cavity: cav
 Construction: res
 Context: Cladding
 Detail: Wall
 Fabric: Wall
 Orientation: Horizontal

12g x 25mm type 17 or 4.8ø aluminium rivets at 1000mm c/c max.
 Dimond corrugate wall cladding (specify thickness and coating)

0.55mm BMT external corner flashing side lap fix to cladding with 4.8ø rivets @ 1000mm max. c/c

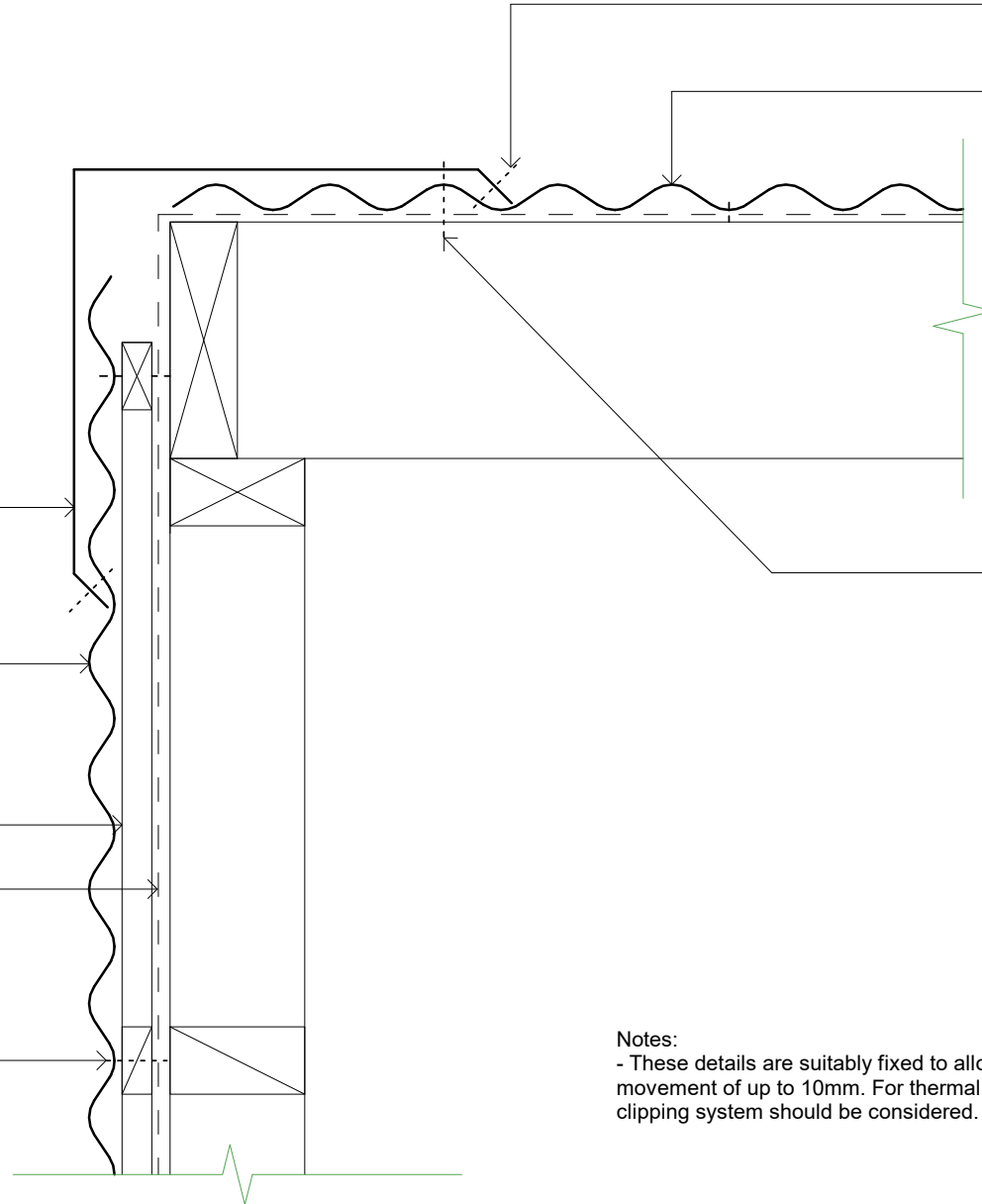
Dimond corrugate wall cladding (specify thickness and coating)

20mm thick cavity battens

Roofing underlay and netting shown dashed

Climaseal coated self drilling 12g x 20mm tek screw pan fixed

Climaseal coated self drilling 12g x 35mm tek screw rib fixed



Notes:
 - These details are suitably fixed to allow for a theoretical thermal movement of up to 10mm. For thermal movement greater than this a clipping system should be considered.

Original Size A4



Master Set
 Wall

Horizontal Cavity Cladding - Barge Flashing

File:		
Rev: Draft 01	Source:	
Scale: 1 : 5	Reference	
Date: 180608	dim_mas_2090	