

Metadata

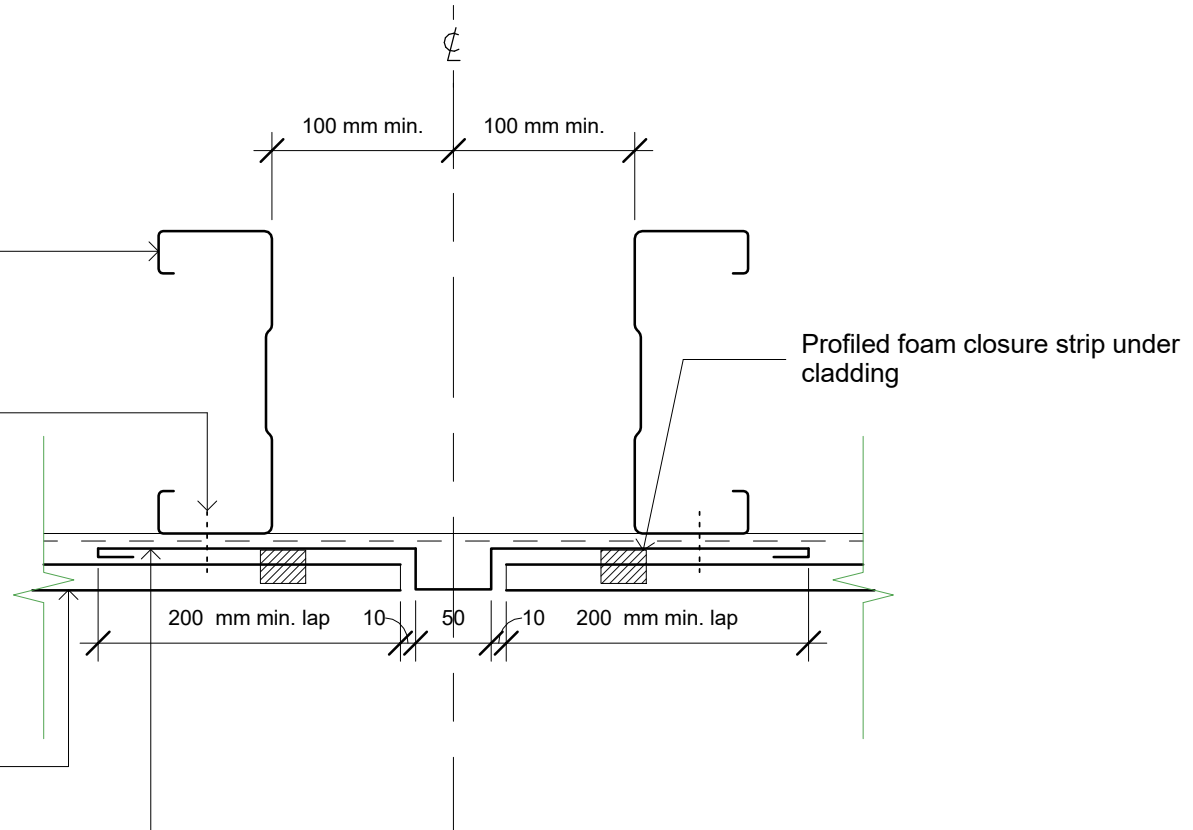
-
 Product: Master Set
 Product Code: mas
 Cavity: -
 Construction: com
 Context: Cladding
 Detail: Wall
 Fabric: Wall
 Orientation: Horizontal

Dimond hi-span cold rolled steel purlin (specify size)

Pan fixed with climaseal coated self drilling 12g x 20mm tek screws

Dimond corrugate wall cladding (specify thickness and coating)

0.55mm BMT purpose made flashing (specify coating)2



Notes:
 - These details are suitably fixed to allow for a theoretical thermal movement of up to 10mm. For thermal movement greater than this a clipping system should be considered.
 - Leave foam out if ventilation is required.

Original Size A4



Master Set
 Wall

Horizontal Sheet Cladding Vertical Butt joint

File:		
Rev: Draft 01	Source:	
Scale: 1 : 5	Reference	
Date: 180608	dim_mas_2080	