

20mm thick cavity battens

Dimondek® 300 cladding (specify thickness and coating)

Dimondek 300 clip fixed with 10g x 45mm wafer head timbertite screw

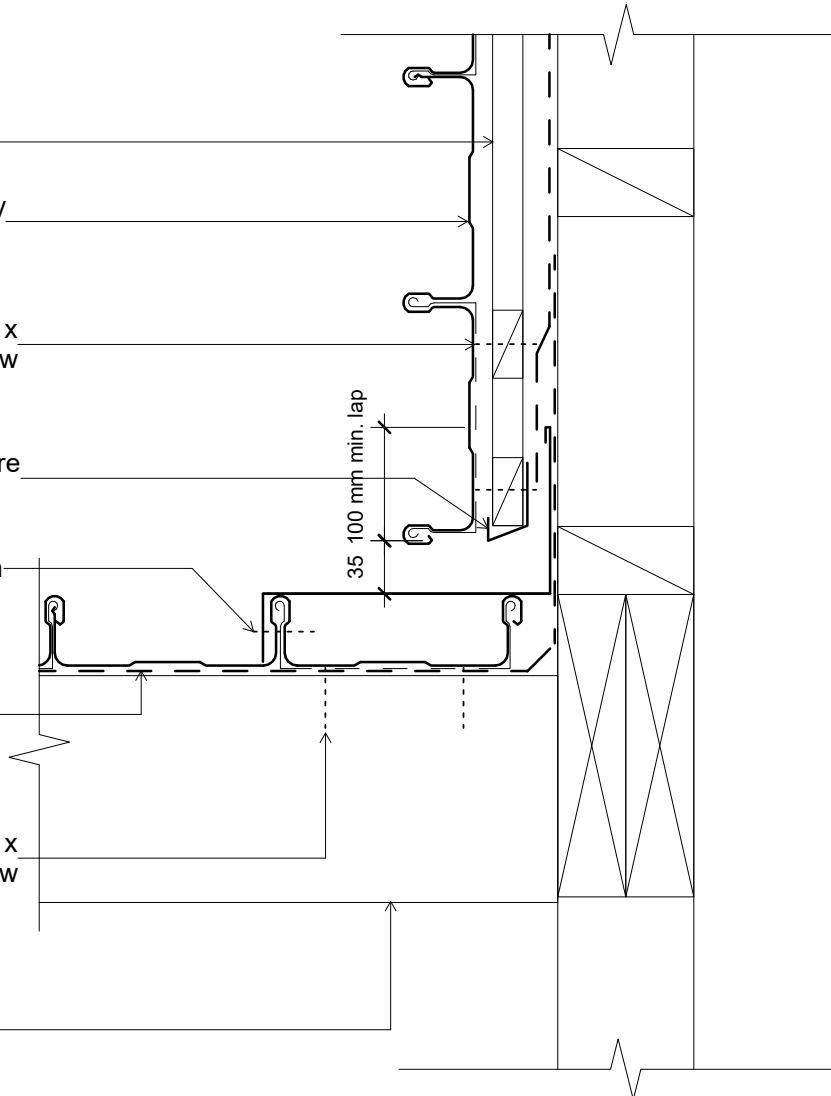
Continuous cavity drainage closure strip

Apron flashing fixed to roof with 4.8Ø aluminium rivets at 1000mm centers

Roofing underlay and netting shown dashed

Dimondek 300 clip fixed with 10g x 45mm wafer head timbertite screw

Purlin



Notes:

- These details are suitably fixed to allow for a theoretical thermal movement of up to 10mm. For thermal movement greater than this a clipping system should be considered.
- Leave foam out if ventilation is required.

Original Size A4



# Dimondek 300 Wall

Horizontal Cavity Cladding - Roof Junction (90 deg)

|                        |                                  |
|------------------------|----------------------------------|
| File:                  |                                  |
| Issue: 01              | Reference<br><b>dim_dd3_2170</b> |
| Scale: 1 : 5           |                                  |
| Date: 28 November 2018 |                                  |