

H3.1 timber capping support ex  
50mm on dpc

Climaseal screw fixed @ 600 c/c  
max. M6 x 25mm roofzip

Fix capping to concrete with  
6.5mm x 20mm metal pin anchors  
@ 1000mm centers

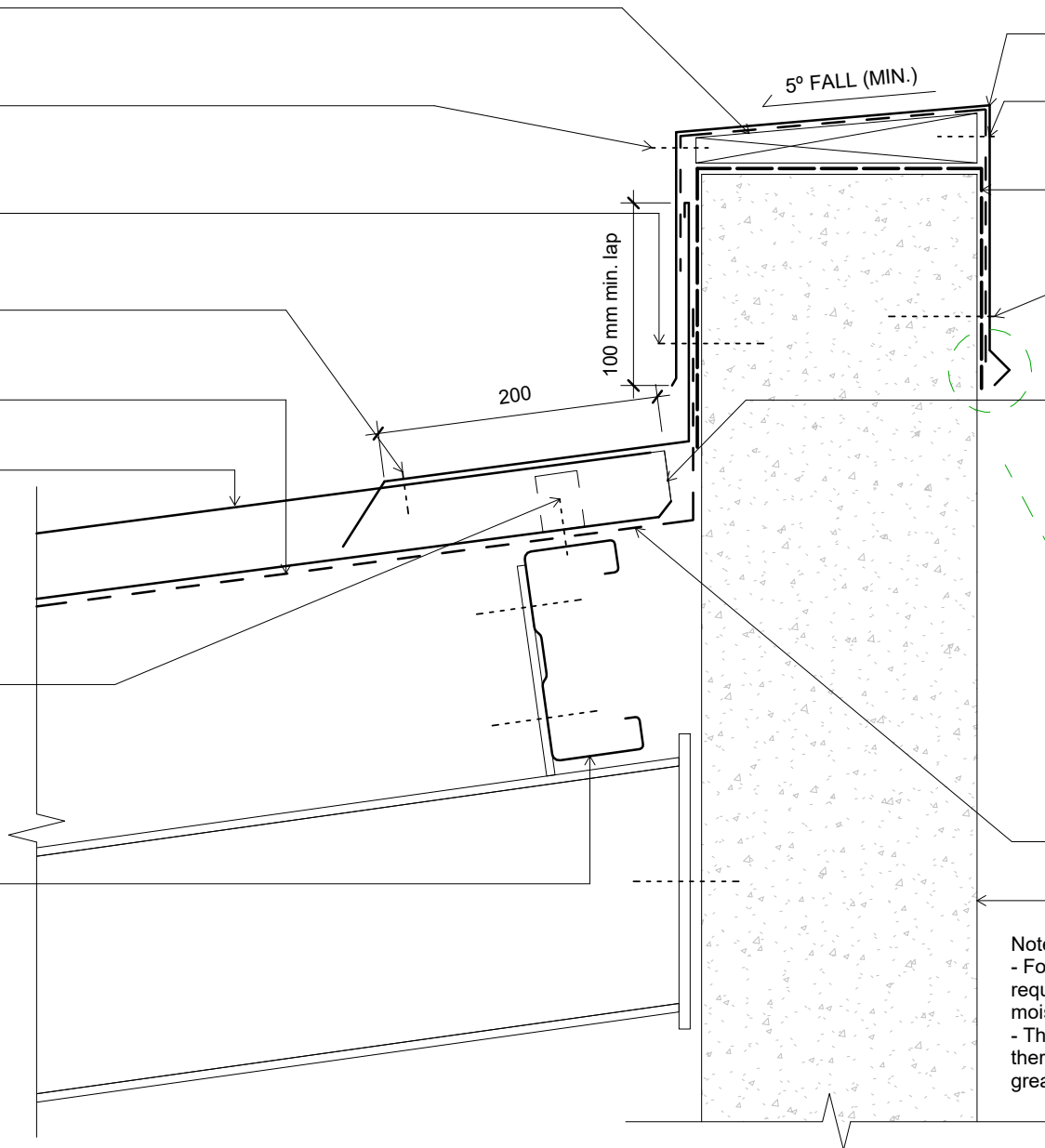
Notched flashing fixed to ribs with  
4.8Ø aluminium rivets fixed every  
2nd rib

Roofing underlay and netting  
shown dashed

Dimondek® 300 roof (specify  
thickness and coating)

Dimondek 300 clip fixed with 10g x  
16mm wafer head tek screw

Dimond hi-span steel purlin  
(specify size)



0.55mm parapet flashing (specify  
coating)

Climaseal screw fixed @ 600 c/c  
max. M6 x 25mm roofzip

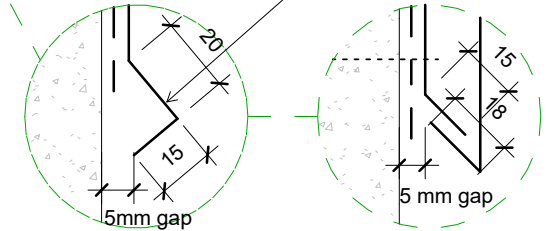
Separation barrier with self  
adhesive tape or similar around  
concrete wall

Fix capping to concrete with  
6.5mm x 20mm metal pin anchors  
@ 1000mm centers

Dimondek 300 stop ended

Cut edge must avoid contact with  
concrete. Avoid overpainting  
flashing to concrete joint.

Alternative solution



Roofing underlay and netting  
shown dashed

Concrete wall

Notes:

- Foam closure strip only required if bird or vermin proofing is required, or if in a high wind area, there is a risk of windblown moisture entering the building.
- These details are suitably fixed to allow for a theoretical thermal movement of up to 10mm. For thermal movement greater than this a clipping system should be considered.

Original Size A4

File:	
Issue:	01
Scale:	As indicated
Date:	28 November 2018
Reference:	dim_dd3_1010