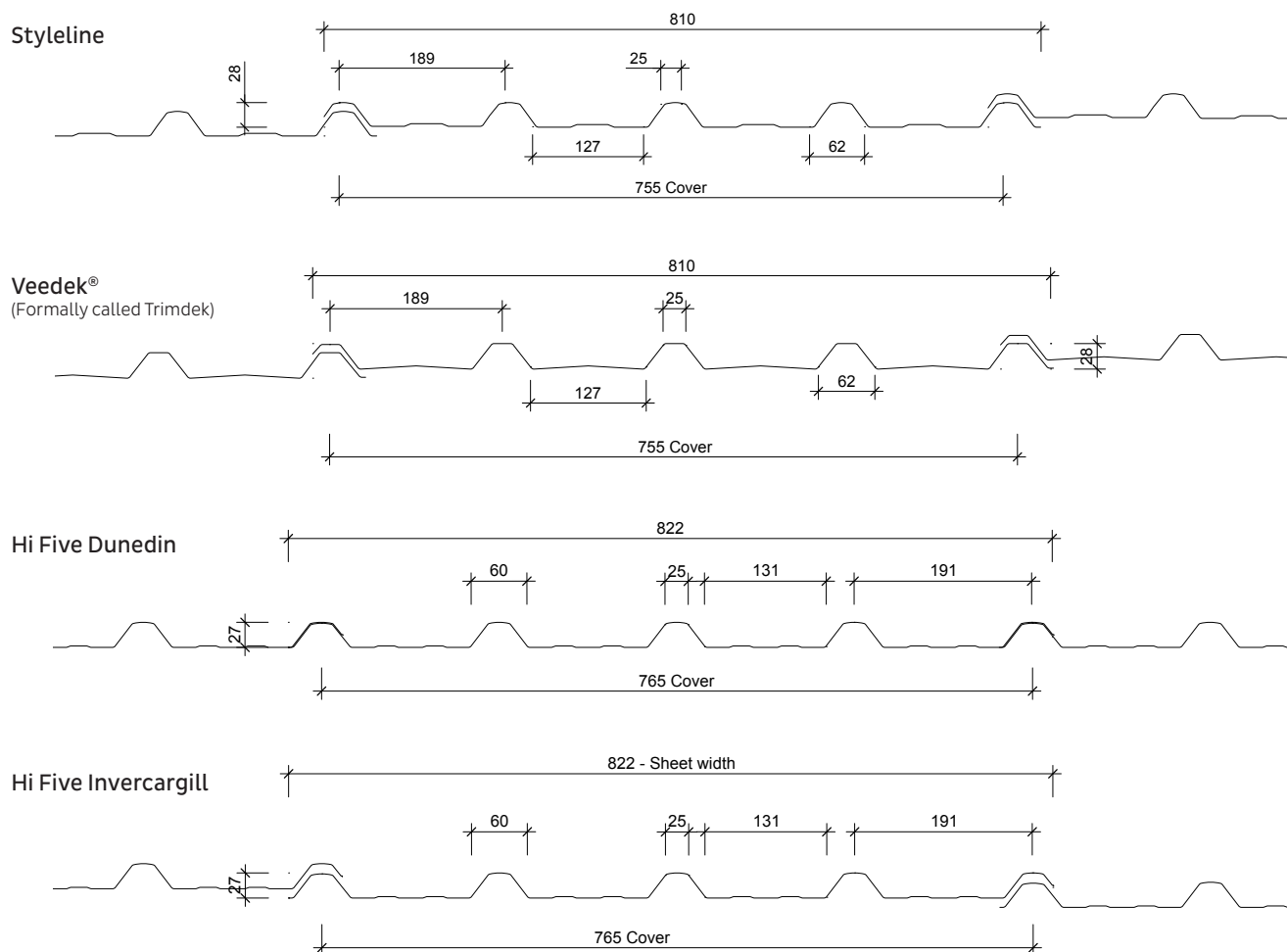


DIMOND STYLELINE, HI FIVE AND VEEDEK® PROFILE PERFORMANCE



Cover (mm)	755
Sheet width (mm)	810
Minimum Pitch	3° (approx. 1:20)

All dimensions given are nominal

Sheet Tolerances

Sheet width: ±5mm

Sheet width for aluminium +0, -15. If sheet cover widths are critical, advise Dimond at time of order.

Sheet length: +10mm, -0mm. For horizontal wall cladding where notified at time of order of intended use, tighter tolerances can be achieved +3mm, -0mm.

Material Options Profile	Steel		Aluminium		Duraclad®
Thickness (BMT) mm	0.4	0.55	0.7	0.9	1.7 (total thickness)
Nominal weight/lineal metre (kg/m)	3.17	4.27	1.78	2.28	2.2
Drape curved roof - min. radius (m)	80	40	80	40	12
Purlin spacings for drape curved roof (m) (1)	1.2	1.4	1.2	1.4	1.1
Machine crimp curved - roof min. radius (mm)	450**	400	n/a	400	n/a
Unsupported overhang (2)	200	250	100	200	100

*Please note: only Styleline is suitable for drape curving or crimp curving

**Hi Five only

(1) Recommended maximum purlin spacing at minimum radius

(2) Based on 1.1kN point load support, but not intended for roof access.

n/a – not available

Roll-forming facilities for Styleline at:	Auckland, Hamilton, Christchurch, Wellington, Whangrei
Roll-forming facilities for Hi Five at:	Invercargill, Dunedin
Curving for Hi Five at:	Invercargill
Roll-forming facilities for Veedek® at:	Auckland, Hamilton, Wellington, Christchurch,
Manufacturing location for Duraclad®:	Auckland
Sheet lengths:	Styleline, Hi Five and Veedek® are custom run to order.

Where long sheets are used consideration must be given to:

- Special transportation licences for sheet lengths over 25m
- Site access for special lifting equipment
- Fixing techniques to accommodate thermal expansion.

STYLELINE, HI FIVE AND VEEDEK® LIMIT STATE LOAD / SPAN CAPACITY CHART

(span in mm, distributed serviceability loads in kPa)

Serviceability Category

		Unrestricted-Access Roof		Restricted-Access Roof			Non-Access Roof or Wall		
G550 Steel 0.40mm	End Span			600	800	1000	1100	1300	1600
	Internal Span			900	1200	1600	1700	2000	2400
	Serviceability			3.5	2.7	1.8	1.6	1.2	0.9
G550 Steel 0.55mm	End Span	800	1000	1100	1300	1500	1500	1700	2000
	Internal Span	1200	1500	1600	1900	2200	2300	2600	3000
	Serviceability	4.0	3.3	3.0	2.5	2.0	1.8	1.5	1.1
5052 H36 Aluminium 0.70mm	End Span				600	800	900	1100	1300
	Internal Span				900	1200	1300	1600	1900
	Serviceability				2.4	1.9	1.8	1.2	0.8
5052 H36 Aluminium 0.90mm	End Span		800	900	1000	1100	1200	1500	1700
	Internal Span		1200	1300	1500	1700	1800	2200	2600
	Serviceability		2.8	2.7	2.2	1.7	1.6	1.4	1.1
Duraclad® 1.7mm (Note 4)	End Span					700	800	1000	1200
	Internal Span					1100	1200	1500	1800
	Serviceability Ultimate	N/R	N/R			4.5	4.4	2.6	1.6

Notes

- In any category, spans above the maximum shown should not be used. Category 1 and 2 maximum spans are based on static point load testing as a guide, and further limited by practical experience of roof performance under dynamic foot traffic loads. Category 3 maximum spans are limited as a guide to achieving satisfactory appearance for wall cladding.
- Loads given are based on 4 screw fasteners/sheet/purlin.
- Loads given are limited to a maximum of 4.5 kPa. If design requirements exceed this limit, contact Dimond for specific advice.
- Duraclad®
 - Serviceability Limit State loads are not applicable to the Duraclad® material, as it does not experience permanent deformation.
 - System must include Safety Mesh if intended for use as a Restricted-Access roof. Refer Section 2.2.1.8.
- N/R = not recommended.
- End span capacities given in this table are based on the end span being $2/3$ of the internal span.
- Design Criteria for Limit State Capacities**
 - Serviceability Limit State**
No deflection or permanent distortion that would cause unacceptable appearance, side lap leakage or water ponding, due to foot traffic point loads, inward or outward wind loads or snow loads.
 - Ultimate Limit State**
No pull through of fixings or fastener withdrawal resulting in sheet detachment due to wind up-lift (outward) loads.
- System Design**
The span capacity of Styleline, Hi Five and Veedek® are determined from the Styleline, Hi Five and Veedek® Limit State Load/Span Capacity Chart using the section of the chart appropriate to the grade and type of material, and to the category of serviceability selected from the three categories below. Serviceability loads have been derived by test to the NZMRM testing procedures. To obtain an ultimate limit state load we recommend factoring the serviceability load up by 1.4 in-line with NZMRM guidelines.
The capacities given do not apply for cyclone wind conditions.
Serviceability Requirements
While these categories are given for design guidance to meet the serviceability limit state criteria, foot traffic point load damage may still occur if there is careless placement of these point loads.

Service Category	Description
1. Unrestricted-access roof	Expect regular foot traffic to access the roof for maintenance work and able to walk anywhere on the roof. No congregation of foot traffic expected.
2. Restricted-access roof	Expect occasional foot traffic educated to walk only on the purlin lines, in the profile pans, or carefully across two profile ribs. Walkways installed where regular traffic is expected, and "Restricted Access" signs placed at access points.
3. Non-access roof or wall	Walls or roofs where no foot traffic access is possible or permitted. If necessary, "No Roof Access" signs used.
- Wind Pressure Guide**
As a guide for non-specific design the following S.L.S. design loads in accordance with the MRM Roofing Code of Practice can be used for buildings less than 10m high, otherwise AS/NZS 1170.2 should be used
Low wind zone = 0.68kPa, Medium wind zone = 0.93kPa, High wind zone = 1.32kPa, Very high wind zone = 1.72kPa and Extra high wind zone = 2.09kPa.

Fastener Design

Styleline, Hi Five and Veedek® should be screw fixed to either timber or steel purlins. The use of the appropriate length of 12g screw will ensure failure by screw pull out will not occur under loads within the scope of the Limit State Load / Roofing Span Capacity Chart.

Purlin Type	Screw Fastener			
	Roofing Rib		Wall Cladding Pan	
	Screw Length* (mm)	Designation	Screw Length* (mm)	Designation
Timber with steel based sheet	65	T17 - 12 - 10 x 65 Roofzip M6 x 65 HG-Z4	Non cavity 35	Roofzip M6 x 50 HG-Z4
			Cavity 50	
Timber with aluminium based sheet	73	14g x 73mm Alutite with 12mmØ clearance hole and an aluminium profiled washer and 36Ø EPDM seal	Non cavity 35	12g x 35mm or 14g x 55mm Alutite with 12mmØ clearance hole and an aluminium round washer and seal
			Cavity 55	
Steel	45	Tek - 12 - 14 x 45	20	Tek - 12 - 14 x 20

*If sarking or insulation is used over the purlins or for wall cladding fixing onto a cavity batten, into the stud, the screw length will need to be increased.

For screw size range and fastener / washer assembly refer Section 2.2.3.1.

The Limit State Load / Span Capacity Chart is based on 4 screw fasteners/sheet/purlin without the use of load spreading washers (except for Duraclad® material, which must be fitted with profiled metal washers and 36mm EPDM seals).

Profiled metal washers are recommended for use:

1. On end spans, or large internal spans where the Ultimate Limit State distributed load is limiting. Contact Dimond for specific advice in these design cases.
2. When required to enable the fixing system to accommodate the thermal movement of long sheets – see Section 2.1.3.4 Thermal Movement.
3. Wherever the designer wishes to ensure the risk of fastener over-tightening will not cause dishing of the crest of the profile rib.

Use in serviceability categories (1) or (2) can allow the reduction of fasteners to an average of 2 screw fasteners/sheet/purlin. If this is done, the distributed load capacities given in the chart should be reduced using a multiplying factor of 0.5.

Long spans may require the specification and use of side lap stitching screws – see Section 2.3.2C Installation Information: Layout and Fastening.

Design Example

Restricted access roof, 0.55mm G550 steel Styleline has a maximum end span of 1500mm and a maximum internal span of 2200mm. The following distributed load capacities apply.

	4 fasteners/sheet	2 fasteners/sheet
End Span	1500mm	1500mm
Internal Span	2200mm	2200mm
Serviceability	2.0 kPa	1.0 kPa

DIMOND STYLELINE, HI FIVE AND VEEDEK® FASTENER LAYOUT OPTIONS

